



# Annual Report

2010/11

**Contents**

	Page
Chair's Report .....	2
Honorary Comptroller's Report.....	6
Appendix: Membership.....	23

## Chair's Report

In my inaugural statement to the CPCG in October 2010, I delivered a paper entitled 'Principle for Policing Lambeth. The Vision remains – to make Lambeth the safest Borough in London followed by making London the safest city in England.

In addressing the challenge of how this Vision can be achieved, I suggested the following:

- Build a unique model of policing which is fair, intelligent and sufficiently robust to ensure that those with a propensity to commit crime are dealt with correctly under the rule of law;
- The role of the police has to be one in which there is a dedicated duty of care for the safety of the prisoner, during which time, uncompromising and relevant evidence are collated to be placed before the courts;
- The role of the Courts is to determine innocence or guilt;

It is never the duty of any arresting officer to take any action which inflicts harm or cause death;

Although we have had meaningful discussions with the police and the Council about building stronger and more trusting relationships with the community, the riots in London have become serious indicators of the strands that still need to be addressed to enhance the relationship between the police and the youth of Lambeth. The Mark Duggan factor was the frustration spark which ignited the flames of rebellion. There has been a media offensive which detracted from the Mark Duggan factor and focused totally on the criminal acts. Everyone is expected to accept that the law is sacrosanct. Yet the failure of the law is the bias which blurs justice. There are cases in which arsonists who hold high office are penalised with community service, whilst the 'feral' are given prison sentences for the same acts of violence. The law must not only claim to be just; it must deliver a parity of unquestionable justice to all.

I have been engaged in Police relations since 1962 through the West Indian Standing Conference (WISC) in which it became the practice for each Commissioner to set out the policing Strategy for London. When John Stevens became Commissioner, WISC put forward the idea of instituting medical suites, especially in police stations where there was high propensity of deaths in custody. We were invited to visit the first suite at Charing Cross Police Station and recommended to John Stevens, a rolling out of the service across the Metropolis. Since the idea of medical suites has not resolved the trauma of deaths in custody, then we must examine the decision making processes which drive this plague.

The killing of Jean Charles de Menezes is a case in point. Everyone has a right to God's given life. In many instances it appears to be snapped out without any thought. It is as though people are expendable. Since 1960 over 1,400 persons have died in custody without anyone being held accountable. It is argued that we live in a county in which the death penalty has been abolished, yet police officers are given the authority to kill. That authority in my view is obscene.

When the decision to kill is taken, it places police officers above the rule of law and the authority of the courts. The question which plagues us as in the case of Jean Charles de Menezes, "Why did the police not take the opportunity to arrest in preference to shooting him several times through the head?" In such a scenario, there are options for abuse, and abuse did take place. An innocent Jean Charles de Menezes was shot and killed. How does the law given power to kill affects the psyche of those who engage in such a barbarian act? I am of the belief that it should not happen in a first world democracy.

In addressing the triggers for the riots, the Government and the Council need to address the following factors:

- Deprivation;
- Jobs;
- Loss of homes;

**Annual Report 2010/11**

- Education must be defined as an investment and not as a cost, and taught by teachers who care passionately about the education of our children;
- They need the feel good factor which endears the feeling of belonging;
- Equal and fair treatment from those who administer resources;
- We have to recognise the loss of faith by the families of victims and the wider community in the IPCC which has replaced the Police Complaints Authority;
- We need an effective, efficient and intelligent police service not a police force which is involved in causing harm and the death of prisoners;
- We need to seek the reform and strengthening of the IPCC's investigative processes, perhaps by introducing a judicial element for those circumstances where police officers are unprepared to make statements..

People want to know that they are safe from those police officers who cause harm; and who they regard as predators. The police have a duty to forensically clean it own ranks. Under no circumstances, should they be accused of closing ranks to protect those who defile the law. It should not happen in a democracy.

For those who are involved in gangs, I call on you to stop the practice of young people killing others. You too, have a duty of care for the safety of humanity. There is no excuse for killing another; and when you do, you must face the consequences imposed by the law. We have work to do. Let us rise to the challenges.

In the coming year, I shall need your help to put in place a framework for saving more lives in custody. We need a police service, an IPCC, and a legal system in which all participants are exemplars of excellence. That is a serious challenge.

Thank you for your support over the past year in which I did the following:

- Chaired all the CPCG meetings,
- Shared the attendance of LCP2 meetings with Jim Toohill,

- Attended a series of one to one meetings with Commander Nick Ephgrave,
- Attended meetings organised by Cllr Steve Reed, Lambeth Council Leader,
- Attended 10 meetings organised by DAC Stephen Kavanagh commencing 6 August 2011 at New Scotland Yard on the riots.

Clarence C Thompson MBE.

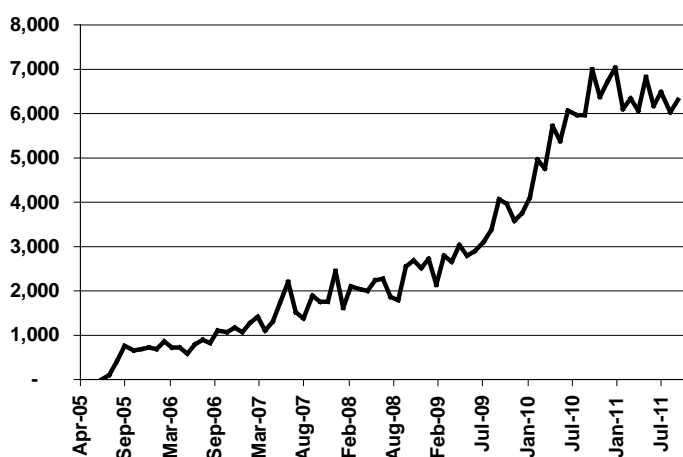
## Honorary Comptroller's Report

CPCG has sustained its service to all those who live, work or study in Lambeth, providing them with access to key decision makers in the statutory agencies charged with making Lambeth a safer and fairer borough. CPCG has an open membership, to individuals and to community organisations, but its service goes wider. This emphasis on breadth of access is reflected in all our activities in the year – our monthly public meetings, our website and our outreach activities. During the course of the year we have introduced some innovations into our ways of working, but there is still a way to go.

### Website

The numbers of 'unique visitors' to our website, having grown steadily from its launch in 2005, appears to have stabilised at between six and seven thousand unique visitors per month. Over 30 per cent of the visitors view downloadable documents (police reports, minutes etc). We were able to make additional use of the website in October 2010, in recruitment. The majority of applicants had learned of the vacancy through the internet and had downloaded the application pack from the website.

### UNIQUE VISITS TO CPCG WEBSITE EACH MONTH



A 'Unique Visit' is one where the visitor loads more than one page

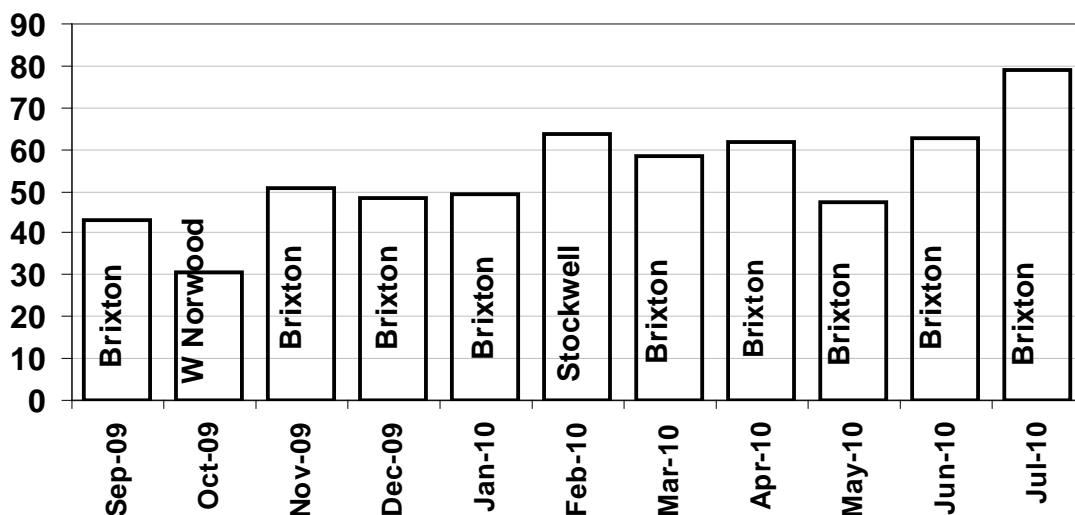


### Monthly Public Meetings

For over twenty five years, our local police have been attending open-access, CPCG public meetings every month. In doing so they, and CPCG, have pre-dated, by twenty years or more, the current notions 'Engagement' and 'Facing the People'. Successive borough commanders and senior officers have attested the value they place on this form of local accountability. In recent years the forum has been extended to encompass the wider Safer Lambeth Partnership as well as specialist units within the MPS, whose activity in the borough can have considerable impact on public confidence.

Lambeth is now one of very few borough CPEGs (Community Police Engagement Groups) in London which holds meetings every month (except August) and where members of the public can attend and speak. Average attendance over the year was down on 2009/10, but closer comparison of the two years on a monthly basis suggests that reduced attendance during the particularly harsh 2009/10 winter was the principle cause.

**ATTENDANCE AT CPCG MONTHLY PUBLIC MEETINGS**





It is a common criticism of forums like CPCG that they are attended by coterie of the 'usual suspects'. Changes in the way we record attendance allows us to address this question and analysis of attendance suggests that this is not so in the case of CPCG.

Over the period of the CPCG 2010/11 'season' (September 2010 to July 2011), over 180 people attended one or more CPCG monthly meetings; between them amassing around 550 attendances ('bottoms on seats').

The table below shows who these people were and indicates how often they attended.

Almost two thirds of those 180 people attending were not members, but rather members of the public (first column in table). Members of the public attending CPCG monthly meetings do so less often than members – by a factor of around three (third column). Nonetheless, they account for over a third of the 550 attendances (second column) – in other words, at an average monthly CPCG public meeting, more than a third of those present are members of the public. Moreover, they are a changing cast – with an average attendance of just 2 meetings in the year, perhaps attending when there is a theme to the meeting in which they have a particular interest or when they have a pressing issue which they want to bring to the forum.

<b>Attendance at CPCG Monthly Public Meetings Sept 2010 – July 2011 Amongst Those Who Attended One or More Meetings</b>	<b>Attendees</b>	<b>Attendances (‘bottoms on seats’)</b>	<b>Average Number of Meetings Attended, out of 11</b>
Individual Members	16%	27%	5
Representatives of Affiliated Community and Voluntary Groups	14%	28%	6
Elected Representatives, Police and Officials of the Safer Lambeth Partnership membership	7%	8%	5
Members of the Public	63%	36%	2

But there are also indications in the analysis which need addressing. In particular,

- If members of the public do attend CPCG monthly meetings, how might they be encouraged to attend more than just two such events, on average?
- Those members of CPCG who attend our monthly public meetings, do so more frequently but, on average, attend approximately just half the meetings in the year. How might they be encouraged to participate more?

These are questions which the current Board has sought to address in two ways:

- To vary the format of events – not everyone is comfortable with the traditional format. Examples in the year are the use of break-out groups in respect of Operation Hannah, the deliberative Saturday afternoon event around the Strategic Assessment or the use of a leaderless discussion format (the Samoan Circle) at the Country Show (see below). There are other models for engagement and we shall seek to develop them.
- By developing a set of Standards for our members (and Board) so that, whatever format of engagement is used, our events are always civil, well ordered and welcoming. These Standards will be discussed by our members at our AGM.

There have been concerns that the sometimes adversarial style of the traditional format of meetings, occasionally attracting the epithet ‘testosterone fuelled’, might be off-putting for women. We already knew that our membership has a roughly 50:50 gender split but the table below shows the split for attendees, including members of the public – the analysis is based on those who signed in with a gender-recognisable first name, the overwhelming majority. There is a slight bias to men, but it is not great amounting to say two people in an attendance of 60. (We need to be mindful though that the picture may look different were we able to similarly partition the level of participation whilst at events.)

Gender and Attendance	Attendees (attended 1 or more meetings)	Attendances (‘bottoms on seats’)	Average Number of Meetings Attended
Women	45%	46%	3.1
Men	55%	54%	2.9

Diversity of attendees is more problematic. We know from experience that Diversity Monitoring Forms are not well received at meetings, and indeed can be off-putting to a member of the public attending for the first time. There is a general acknowledgement that the attendance at CPCG events is very broad but nonetheless, we need to properly assess the diversity of our reach. In the current year we shall separately poll individuals who have attended our events, and those on our mailing list who have not, asking them how they would wish to represent themselves in terms of the standard diversity strands, including age range.

The public meetings usually have a theme, in addition the customary monthly police report. These are shown in the table below.

MONTH	THEME	PRESENTERS
Sept 10	Appropriate Adults	MPS Lambeth
Oct 10	TASER	MPS CO19
Nov 10	Operation Hannah	MPS Lambeth
Dec 10	Mental Illness and Custody	Cognito Consultants, Lambeth Council, Adult Social Services
Jan 11	Operation Hannah	MPS Lambeth
Feb 11	Trident	MPS Trident

MONTH	THEME	PRESENTERS
Mar 11	Joint Enterprise	MPS, Lambeth Crown Prosecution Service
Apr 11	Extended Police Report	MPS Lambeth
May 11	Violent Crime in Lambeth	MPS Lambeth, Lambeth Council Community Safety, Chuka Umunna MP
Jun 11	Violent Crime in Lambeth	MPS Lambeth, MPS Trident
Jul 11	Gangs Youth Services	Prof John Pitts (Bedford Univ), Lambeth Council Children and Young People's Services

It is not the purpose of this report to rehash the minutes of those meetings: they are readily available on-line or on request from the Group's office. But a review of those minutes points up the value of these monthly events in a number of respects.

In last year's Annual Report we identified three characteristics of our monthly public meetings which we judged to be important, and these have continued to be in evidence:

**Open Access** – They should be public events, and not just for members, with the opportunity to address community concerns raised not just those presented. As shown above, members of the public represent over a third of the attendance an average meeting and they are a changing cast. Examples of the this issues they bring about in the minutes eg thefts from roofs in West Norwood, or cover for Safer Neighbourhood

**Responsiveness** – The origins of Community-Police Police Consultative Groups lay in the Scarman Inquiry into the events in Brixton in 1981 and the identification of the need for a means to avoid polarisation between the local community and the police and to address flashpoints quickly when they arise. This was well illustrated at our meeting in April 2011 which was largely given over to the [then] very recent shooting in

**Annual Report 2010/11**

Stockwell which had included the serious injury of girl of five. Similarly, following the concerns raised at our July 2010 meeting about a TASERing incident in West Norwood, our October 2010 meeting was given over to a detailed presentation of statistics on TASER use, from CO19.

**Closing the Loop** - Research shows that people have confidence in 'Engagement' only if they subsequently have their query answered or see their suggestions implemented (or given explanation of why not). This may be in respect of very specific issues or incidents, and our local MPS and Lambeth Council's Community Safety Division deserve credit for taking each incident away, following up and reporting back. But it is also true of more substantial changes to services. Such a case is Operation Hannah – a reshaping of Neighbourhood Policing (and Response Teams) in the borough which was launched in February 2011. This was preceded by our November 2010 meeting, where specific concerns, comments and queries were developed by break-out groups. At our January 2011 meeting, the borough commander, Chief Supt Nick Ephgrave, gave detailed and considered response. A presentation on the evaluation of Operation Hannah is slated for our November 2011 meeting. There have been concerns expressed about the increased workload on Safer Neighbourhood Sergeants, the looser ring-fencing of teams to Wards. In other parts of London, Sergeants are being lost as Wards as merged and there is interest to find out how this pressure on numbers will play into Hannah

**An Engagement Hub** - At the outset, CPCG addressed the relationship between the police and community. Over the years the need to take a wider approach to engagement around community safety has become all too apparent. Meanwhile other vehicles for engagement with the agencies responsible for our safety have come on the scene.

During the year, we have continued to develop our broader approach. Representatives of specialist units within the MPS continue to attend our events or working groups (eg CO19, Trident, TSG), Lambeth Council officers (from Community Safety but also from other functions, such as Children and Young People's Services) consistently attend our events as do Councillors and we have had the active participation of other agencies (eg

the local Crown Prosecution Service) together with our local MPs (Chuka Umunna and Kate Hoey) and our MPA Link Member (Val Shawcross).

At the same time, we have continued to develop our links with other voluntary groups, especially those involved with Community Safety.

An additional event in March 2011 illustrated well the strengthened relationship with the Safer Lambeth Partnership. This took place on a Saturday afternoon in Lambeth Town Hall, with an attendance from both CPCG and Safer Neighbourhood Panels, as well as the local police, Lambeth Council's Community Safety Division and our MPA Link Member. The subject was the Partnership's annual Strategic Assessment and the format was more deliberative than traditional meetings. Attendees had received the Assessment document, a detailed analysis of crime and anti-social behaviour patterns in the borough, ahead of the event and were able, in workshop sessions through afternoon, to address the prioritisation within the Assessment and potential strategies for addressing them.

### **Major Pre-occupations During the Year**

The detail of monthly events, the presentations given and their debate or issues brought to meetings and their subsequent follow up, can be found in the minutes. But it is worth highlighting some major themes and issues that emerged, some of which ran through the year.

**Serious Violence** – Lambeth has made considerable progress over the past decade in overall crime reduction, especially in the early part of the decade. In the last financial year Lambeth was eighth in the league table of London's 32 boroughs for total crime but third for murder and top of the league for the more serious end of violent crime.<sup>1</sup> This has been reflected in community concerns and at CPCG. This is in contrast to the beginning of the decade when the prime concerns were 'street crime' (Robbery, Theft and Pick-pocketing) and drug dealing in open markets, although it should be noted that Robbery is an important driver of violent crime.

---

<sup>1</sup> source: MPS Crime Statistics, [www.met.police.uk](http://www.met.police.uk) – expressed on a population weighted basis

**Annual Report 2010/11**

Violent Crime amongst Young People has been a particular concern, including sexual violence against young women, and the issue of gang related violence. CPCG has contributed to developments led by the Safer Lambeth Partnership in setting up a cohesive community response to this endemic problem.

**The Impact of Funding Cuts in the Public and Voluntary Sector** - There has been considerable apprehension of the impact ongoing funding cuts. This has focussed first and foremost on services to young people, both targeted and universal, but also on policing strength and resilience both in terms of so-called 'front-line' policing and back-office functions. The resilience of Operation Hannah to any such cuts and the need to ensure that the reshaping is given a fair trial were also issues raised by CPCG.

**Custody Issues** - This has been a recurrent theme, in respect of the care of people with mental illness in police custody, the provision of Appropriate Adults and changes to the administration of the Independent Custody Visitors. The final report of the Mental Health Working Group, which resulted in a £1.8m, three year project to provide multi-disciplinary support and assessment for detainees with mental health problems was welcomed by the Group. This represented the culmination of work initiated by CPCG in 2005 and is another example of 'closing the loop'.

**Disproportionality in Enforcement** - Stop and Search continues to be an issue in Lambeth as across London, with a focus of concern on effectiveness and proportionality between ethnic groups. In addition, the presentation at our October 2010 meeting of data relating to the disproportionality of TASER use has led us to make representations to the MPA, an issue we are still pursuing.

**Joint Enterprise** - A presentation at our March 2011 public meeting, from the Crown Prosecution Service and the MPS, explained the operation of Joint Enterprise, a long-standing legal provision whereby individuals may be charged with a crime, if they are in some way involved, even if the final action is not proven to have been directly by them. The presentation also demonstrated the message which is being delivered to young people about Joint Enterprise. The meeting's response was one of consternation at the potential for innocent people to get convicted, the potential adverse effect on the willingness of witnesses to come forward and the inadequacy of recording methods to



assess the effectiveness and fairness. of Joint Enterprise. CPCG has made representations to our local MPs and the issue is being followed up.

**The August Disturbances** - Strictly these fell outside of the period covered in this report, but of course have been a pre-occupation over the summer. The immediate response to these events involved CPCG working with other voluntary organisations, the Council and the Police. More recently, the levels of sentencing have raised questions.

CPCG members, and members of the public at our events, were quick to praise our local police (and officers from other police services drafted in to London) for their efforts in providing reassurance after the events and also Lambeth Council in its work in bringing the community together.

### **New Methods of Engagement**

Having returned to strength in our staffing (see Resources below), CPCG was able to return to the Lambeth Country Show in July 2011. This is an excellent opportunity to engage with people who do not attend traditional meetings – over 120,000 people visit the show over the weekend. As well as information stalls (and we were pleased to be joined by Southwark CPCG) and interactive polling on crime priorities, two short – but well attended - debates were held on the Sunday, with participation from MPS Lambeth, Lambeth Council and NHS Lambeth.

On the Saturday, a novel format was used for a 'leaderless conversation' or Samoan Circle, a format which encourages considered discussion between a small, but revolving, number of participants. Observers can elect to join the discussion at any time, but on a 'one-in, one-out' basis, so that listening is as important an activity as speaking. Over 100 people participated in the conversation, many of them young, which focussed on aspects of crime and community safety of relevance to young people.

CPCG has long been active in London Community Police Partnership (LCP2), an umbrella group for CPCGs across London. In the course of the year, LCP2 had its

**Annual Report 2010/11**

funding from the MPA cut and consequently cancelled a London-wide workshop for CPCGs on Youth engagement. Lambeth CPCG picked up the baton and hosted the workshop which was held in May, with presentations and break-outs covering

- Running Youth Conferences (Richmond CPCG)
- Alcohol and Young People (Bexley CPCG)
- Action Research: Mapping Young People’s Community Safety Concerns (Walthamstow CPCG)
- MPS Youth Engagement Strategy (MPS)

As well as supporting community engagement beyond our boundaries, the event provided a cost-efficient way for CPCG Lambeth to learn from best practice elsewhere.

**Resources**

Lambeth CPCG has a growing membership base and a growing mailing list, the latter the life-blood of any community organisation. Here are some facts and figures.

<b>Membership</b>	<b>Number</b>	White:BME	Female: Male	Faith
Individual	42	23:19	21:21	-
Community and Voluntary Organisations	42	4 specifically for BME groups	1 organisation women only	5 faith based
Safer Neighbourhood Panels	2	-	-	-
Statutory Organisations	7	-	-	
Mailing List	816			

- Includes Latin American people

In a borough with a 25% annual ‘churn’ (population moving in and out of the borough), maintaining a clean mailing list is an important activity. During the year, we had a major clean-up of the database (of dead email addresses or returned mail, for example). The underlying dynamic of the database is shown in the table below:

<b>Opening Mailing List</b>	<b>Lost through Clean-up and Churn</b>	<b>New Recruits to Mailing List</b>	<b>Closing Mailing List</b>
840	157	133	816

The mailing list is probably the key driver of the relatively large numbers of members of the public who attend our events. It is also an important way of keeping members of other community groups informed – for example, the mailing list includes over 70 members of Safer Neighbourhood Panels as well as members of our local Independent Advisory Group (IAG).

This membership base, and contact within the community, not only provides a broad range of perspectives of community safety and policing in Lambeth, but also is the basis of the voluntary effort invested in CPCG each year. In a normal year, we estimate (using the MPA’s methodology) the value of voluntary input to around £15,000. In the financial year 2010/11, during which we carried a vacant post for six months, this rose to over £35,000. Much of that effort comes from our Board, details of which are given in the Appendix.

In January 2011, we were able to appoint to the vacant post. This is the first time CPCG has recruited directly and of course the exercise was itself time and resource consuming. In a new departure, we have split the post (60:40) between two Engagement Managers who each work across the piece but take specific responsibilities within that. In this way we hope to better focus and develop our engagement activities. It is a new experience for CPCG in ways of working which we will continually monitor and adjust as necessary.

## Finance

CPCGs formal company accounts are given separately for approval at the AGM. On subsequent pages are the accounts presented in the more familiar format.

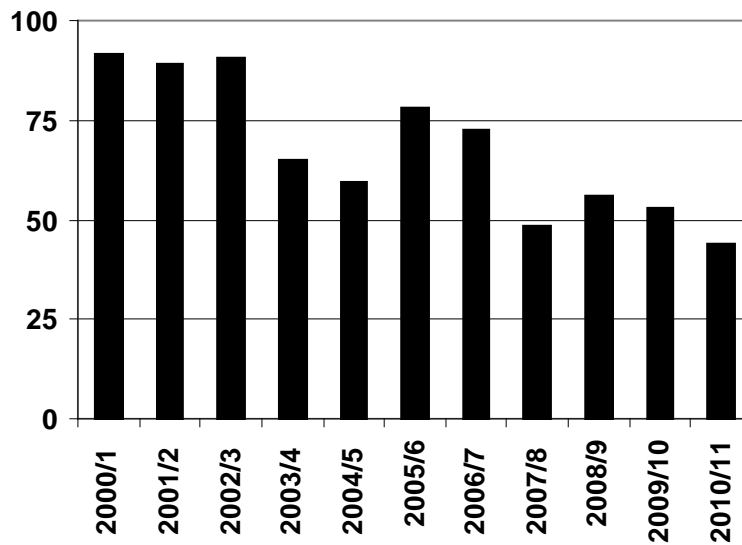
The key headline is the reduction in employment related costs, due to the staff vacancy.

This allowed us to:

- Escape our underlying imbalance between core income and core costs, and consequent draw down of reserves (at least during 2010/11)
- Cover the costs of recruitment
- Replace IT equipment and software
- Replace public address equipment
- Engage professional help for with our IT network, backups etc and with graphic design.
- Bolster our reserves to above policy level (£12k) to give us realisable assets of just over £20k at the financial year end.

This is a strong position with which to have entered 2011/12 – and probably stronger than any other CPCG in London. But it will be short lived. In common with other CPCGs, Lambeth suffered a 12.5 per cent cut in funding, from £50k to £43.75k. Taken over the past decade this represents a real terms (allowing for inflation) reduction in funding of over 50 per cent.

**MPA FUNDING (£'000) AT 2011 PRICES**



Adjusted by Retail Price Index

Whilst the boosted reserves position with which we entered 2011/12 will cushion CPCG in that year, the future is more hazardous. There is an expectation that there will be further cuts to the MPA's funding of community engagement generally (or rather that of its successor, the Mayor's Office for Policing and Crime), amounting to 50 per cent over the three years of the spending review period (to 2014).

There may be some respite for Lambeth; the relevant committee of the outgoing MPA had recommended that going forward, allocation of engagement funding between boroughs should be weighted to reflect Relative Deprivation Indices. On our estimation, as the sixth most deprived borough in London, this could go some way to restore our position. But implementation of this recommendation is by no means certain – it would result in substantial re-allocation from outer to inner London boroughs. For that reason,

**Annual Report 2010/11**

the new Board will have to pursue energetically both options for cutting costs and sourcing additional funds.

On a personal note, this is my seventh and last report as Honorary Comptroller. CPCG has travelled a distance since 2004 when the MPA was on the verge of ceasing to fund us and we had few friends in the borough to hasten to our defence. We now have strong relationships, within and without the borough, offer a wider range of opportunities for local people to 'have their shout' and are in an enviable financial position, though facing a perilous future. We have inherited a unique gift from our predecessors, many of whom are no longer with us, and have a responsibility to sustain and renew it. That will be quite a challenge.

It is a pleasure to thank all the people in CPCG from whom I've been able to learn much, particularly the three successive Chairs I've served with – Lee Jasper, Anna Tapsell and Clarence Thompson – and also the staff who have all been so adaptable and supportive latterly Ben and now DM and Ros. I'm also indebted to the changing cast of officials and elected representatives within the public agencies down the years. The interface between public bodies (highly structured, relatively well resourced and organised, driven by targets and government imperatives) and community groups (loosely structured, relying on volunteers, with slow decision making) is a messy one. It requires good will and patience, on both sides, to serve the common good and I have generally found both in abundance.

Jim Toohill

Honorary Comptroller

**CPCGLambeth**

**Annual Accounts 2010/11**

<b>Expenditure</b>		<b>2010/11</b>	<b>2009/0</b>
<i>Notes</i>		<b>£</b>	<b>£</b>
	<i>Employment Costs</i>		
	Salary Costs	<b>15,093</b>	35,564
	Recruitment Costs	<b>3,408</b>	
	<i>Non-Employment Costs</i>		
	Travel	6	
	Telephone, Fax and Broadband	1,084	1,236
	Room Hire	420	1,364
	Rent	9,476	9,376
	Refreshments	1,485	2,016
	Professional Services	2,461	1,275
	Postage & Printing	3,391	816
	Office Supplies	1,558	786
	Office Equipment	343	118
	Depreciation on tangible fixed assets	1,941	1,228
	Engagement Project - Whose Shout?		8,797
	Sundry	71	
	<i>Total Non-Employment Costs</i>	<b>22,236</b>	27,012
		<b>40,737</b>	<b>62,575</b>
<b>Income</b>		<b>2010/11</b>	<b>2009/0</b>
<i>Notes</i>		<b>£</b>	<b>£</b>
	MPA - Grant	50,000	50,000
	MPS - Contribution to Refreshments	500	750
	<i>Other</i>		80
		<b>50,500</b>	<b>50,830</b>
<b>Net (Deficit) Movement in Funds</b>		<b>9,763</b>	<b>(11,745)</b>



## Balance Sheet Movements

	£
Cash in hand and at Bank 31/3/2010	10,233
Debtors at 31/3/2010	673
Creditors at 31/3/2010	
Tangible Fixed Assets at 31/3/2010	1,344
<b>Total Assets at 31/3/2010</b>	<b>12,250</b>
Movement on Total Assets 2010/11	9,763
<b>Total Assets at 31/3/2011</b>	<b>22,013</b>

## Balance Sheet at 31 March 2011

	£
<i>Current Assets</i>	
Cash in Hand and at Bank	22,101
<i>Debtors</i>	
MPS: Contribution to Refreshments	500
Dell Corporation Refund	48
<i>Current Liabilities</i>	
Creditors	
Dell Corporation	912
LBL (CRB Checks)	100
1 Reimbursements: Jim Toohill	1,168
<b>Net Funds at 31/3/2011</b>	<b>20,469</b>
<i>Fixed Assets</i>	
Tangible Assets	1,545
<b>Total Assets at 31/3/2011</b>	<b>22,013</b>
1 Details of Reimbursments: Jim Toohill:	
Domain Hosting *	£133.08
Companies House Return *	£15.00
Royal Mail Smart Stamp *	£436.99
Acme Whistles *	£32.43
Office Equipment *	£440.93
Refreshments	£109.93

## Appendix: Membership and Board

Membership during CPCG year 2010/11 (July to July) with those who have joined since, up to the time of publication, shown \*

### Community and Voluntary Organisations

**Angell Town Tenants Management Organisation** Cathy Valentine  
**Bathesda Ministries UK** Ervell Bailey, Dionne Lamont  
**Brixton Domino Club** Lloyd Leon MBE  
**Brixton Market Traders Federation** Stuart Horwood, John Gordon  
**Brixton Society** Doye Akinlade, Ian Warner  
**Churches Together in Brixton** Rev Stephen Sichel  
**Churches Together in Clapham** Elizabeth Gibson, Anna Long  
**Clapham Community Partnership** Ros Munday  
**Clapham and Stockwell Faith Forum** Catriona Robertson  
**Clapham Sector Working Party** John Wainwright  
**Clapham Town Neighbourhood Watch** Peggy Tyler, Wally Channon RIP  
**Cressingham Gardens Tenants and Residents Association** Sandra Moodie  
**Flipside** Jean Carpenter  
**Forum of Portuguese and Spanish Speaking Communities – Lambeth** Myriam Hay  
**Friends of Brockwell Park** Robert Holden  
**Herne Hill Forum** Nick Abengowe  
**Herne Hill Society** John Frankland  
**HM Prison Brixton Independent Monitoring Group** Phyllis Jackson  
**Kennington Sector Working Party** Michael Somers  
**Lambeth Older People's Forum** Martin Walsh  
**Lambeth Summer Projects Trust** Nick Mason  
**Lambeth Towers and Lambeth Road TRA** Arulini K. Velmurugu  
**Lambeth Women's Aid** Mary Ann Mhina, Jane Warwick  
**Milkwood Residents Association** Maude Estwick, Hazel Watson  
**NACRO** Tony Chrouch  
**Popular Youth Association** Rowena Estwick  
**St Matthew's Estate** Sheila Draper  
**Queen Mother Moore School** Clarence Thompson MBE  
**South London Synagogue** Dr Brian Mantell  
**Stockwell Park Residents Association** David Tomlinson  
**Streatham Common Southside Neighbourhood Watch** Anna Hunter  
**Streatham Southern Sector Working Party** George Tuson  
**Tulse Hill TRA** Kathy White, Rhoda Anderson  
**Victim Support Lambeth** Nadia Inwood

**Annual Report 2010/11**

**West Indian Ex-Servicemen's Association UK** Neil Flanigan, Jim Fairweather, Keith Shaw

**West Indian Standing Conference** Hedley Johnson

**Your Story** Vacant

**Safer Neighbourhood Panels**

**Streatham Wells Safer Neighbourhood Panel** Felix Ogbogoh

**Herne Hill Safer Neighbourhood Panel** John Frankland

**Statutory Organisations**

**British Transport Police** Insp. Ian Mixter

**Crown Prosecution Service** Martin Ryan

**HM Prison Brixton** Amy Rees

**London Borough of Lambeth Council (post-May 2009)** Cllr. Kingsley Abrams; Cllr. Mark Bennett; Cllr. Diane Braithwaite; Cllr. Lorna Campbell; Cllr. Betty-Evans-Jacas; Cllr. Rachel Heywood; Cllr. Stephen Morgan; Cllr. Graham Pycock; Cllr. Imogen Walker

**London Borough of Lambeth Council (post-May 2010)** Cllr Mark Bennet, Cllr Lorna Campbell, Cllr Rachel Heywood, Cllr Jack Hopkins, Cllr Julia Memery, Cllr Kita Ogden, Cllr Mike Smith, Cllr Imogen Walker

**London Borough of Lambeth Council (post-March 2011)** Cllr Lorna Campbell, Cllr Rachel Heywood, Cllr Jack Hopkins, Cllr Kita Ogden, Cllr Mike Smith, Cllr Imogen Walker, Cllr Shirley Cosgrave, Cllr Jennifer Braithwaite

**London Borough of Lambeth - Community Safety**

George Marshman, Ann Corbett

**London Probation Service** Adam Kerr

**MPA Link Member** Caroline Pidgeon

**MPS Lambeth** Supt Nick Ephgrave Supt John Corrigan

**Panel of Independent Custody Visitors for Lambeth** Jane Warwick

**Individual Members**

Paul Andell	Zoe Fonteyn	Patricia Moberly
Hope Barrett	Gloria Gomez	Richard Moore
Ivelaw Bowman	Tia Henry-Lindo	Clare Moore
Rod Brown	Nick Horley*	James Osho
Shane Collins	John Howard	Brian Parker
Habiba Compaore	Lena James	David Pinder
Julia Cordero	Lee Jasper	David Prichard-Jones
Richard G. Dutton	Gill Kenealy	Juneary Raymond
Marlene Ellis*	Veronica Ledwith	Clovis Reid MBE
Betty Evans-Jacas	Bancroft McCarthy	Cheryl Sealey
Rosemarie Falaiye	Hannah Mir	Fernando Senior

**Annual Report 2010/11**

Benjamin Simbo  
Jean Slater  
Anna Tapsell

Jim Toohill  
Mike Tuppen  
Steve Wahab Bolarinwa

Wesley Walters-Stephenson  
Hilary-Claire Wears  
Julia Wolton

**Board 2009/0**

**Individual Membership:**

Paul Andell (Vice-Chair); Canon Ivelaw Bowman; Lee Jasper, Clovis Reid MBE, Anna Tapsell Jim Toohill (Honorary Comptroller)

**Community and Voluntary Organisations:**

Clarence Thompson (Queen Mother Moore School - Chair) Sandra Moodie (Cressingham Gardens TRA – Vice Chair); Ros Munday (Clapham Community Partnership); Jane Warwick (Lambeth Women’s Aid) Wesley Walters-Stephenson (Your Story: Vice Chair);

**Safer Neighbourhood Panels:** Felix Ogbogoh (Streatham Wells Safer Neighbourhood Panel)

**Administration:** Ben McKendrick

Board Member	AGM Last Elected	AGM Term Ends	Expenses Claimed 2010/11
Paul Andell	2009	2011	NIL
Canon Ivelaw Bowman	2010	2012	NIL
Lee Jasper	2010	2012	
Sandra Moodie	2010	2012	NIL
Ros Munday	2010	2012	NIL
Felix Ogbogoh	Coopted	2011	NIL
Clovis Reid	2010	2012	NIL
Anna Tapsell	2009	2011	NIL
Clarence Thompson	2010	2012	NIL
Jim Toohill	2009	2011	NIL
Wesley Walters-Stephenson	2009	2011	NIL
Jane Warwick	2009	2011	NIL

Board Member	Declared Interests
Clarence Thompson	Queen Mother Moore School
Paul Andell	Employment - Crime Reseach / Youth Community & Social Work Training Political Affiliations - Labour Member – Friends of Vauxhall Gardens
Ivelaw Bowman	Church of England Priest
Lee Jasper	Director - Brixton Splash Ltd
Sandra Moodie	Chair - Cressingham Gardens T.R.A.
Ros Munday	Director – LVAC Char - Clapham Town Safety Neighbourhood Panel Member – Lambeth Tenants Council Executive
Felix Ogbogoh	Streatham Wells Safer Neighbourhood Panel Lambeth BlackFamilies Forum Streatham Action Group
Clovis Reid	Employee NACRO
Anna Tapsell	<p>I am an Associate Mental Health Act Manager for the South London and Maudsley Foundation Mental Health Trust. That is an appointed role delegated by the Non Executive Directors of the Trust Board to provide to an independent hearing, which has the power of discharge, for those who wish to appeal against their detention under Sections of the Mental Health Act 1983 as amended in 2007. The position is not salaried but a token sessional payment is awarded.</p> <p>I am a long standing member of Lambeth Women's Aid Management Committee and Lambeth Domestic Violence Forum and MARAC. All these positions are voluntary and unpaid.</p> <p>I am the Chairperson of the Kennington Association which is a voluntary and unpaid role. The KA has a Planning Forum and a Business Network as well as a number of other subgroups concerned with the interests of local residents and it also raises money through its activities to benefit community needs. It is non party political and non- sectarian.</p> <p>I have no party political affiliations.</p>

Board Member	Declared Interests
	I am a non religious Jew.
Jim Toohill	<p>Employment - Self-employed management consultant, no activity Lambeth based.</p> <p>Non-Executive Director - NHS Lambeth (Lambeth Primary Care Trust) to March 2011 (NHS Lambeth is a member of the Safer Lambeth Partnership)</p> <p>Director - London Communities Police Partnership Ltd.(Umbrella body for London borough CPEGs) to July 2011;</p> <p>Edward Lear Foundation Ltd (Disability Arts Consultancy)</p> <p>Memberships - Brixton Town Centre Safer Neighbourhood Panel</p>
Wesley Walters-Stephenson	Membership - Kiwaris / Your Story
Jane Warwick	<p>Rapley Report Steering Committee; Treasurer Lambeth Women's Aid; Chair Lambeth Independent Custody Visitor's Panel; Independent Custody Visitor; CPCG Stop and Search Panel.</p>

**Annual Report 2010/11**

**Contact Details**

Unit 58  
Eurolink Business Centre,  
49 Effra Road  
London SW2 1BZ,

T: 020 7733 0878

F: 020 7274 7623

E: [admin@lambethcpcg.org.uk](mailto:admin@lambethcpcg.org.uk)

W: [www.lambethcpcg.org.uk](http://www.lambethcpcg.org.uk)

Company Limited by Guarantee, Registration No:5623445