



Artists courtesy of [www.paintshopstudio.com](http://www.paintshopstudio.com)

## Annual Report 2011/12

## Contents

|   | Page |
|---|------|
| Chair's Report.....                     | 2    |
| Stop and Search Sub-Group Report.....   | 8    |
| Mental Health Sub-Group Report.....     | 14   |
| Safer Neighbourhood Panels' Report..... | 15   |
| Honorary Comptroller's Report.....      | 17   |
| Finance.....                            | 22   |
| including Annual Accounts               |      |
| Appendix: Membership.....               | 25   |

## Chair's Report

During my time with the CPCG Lambeth I have seen many a cause championed and dire situations rescued with our intervention. I was also privileged to witness the creation of **The Lambeth Black Families Forum (LBFF)** this year chaired by our very own Sandra Moodie and Vince McBean from **The West Indian and ex Service Personnel (WASP)** and supported by Lambeth Police and the Council.

### **An Inspirational moment In April 2011 saw:**

Ivelaw Bowman, Cheryl Sealy and Wesley Stephenson honoured by Operation Trident Occupational Command Unit with Commendations for work above and beyond the call. This was a moment where we all publicly acknowledged CPCG for Lambeth and the work we do as we believe:

***'the group is the group and we stand for something together'***

I have seen the tears and despair of families coping with the loss of loved ones gunned down or tragically stabbed in their prime due to gang or area code issues or death following police contact.

More alarmingly, is the on-going question of our youth service and the youth clubs available to them as their environment seems to be vanishing right before their eyes. Unless the framework is there for the young people then the structure will eventually fall which we cannot allow as we are failing them. We ultimately would have a hand in creating accidental victims of the criminal justice system.

My role was to attempt to steady our ship and help the group arrive through a turbulent period through to our AGM.

The CPCG Lambeth has long provided many with a platform to challenge or an arena to seek accountability and seek clarity on criminal justice issues.

It has also provided a mechanism where like-minded people can support victims and agencies alike with solutions and support and, I would like to believe, create friendships.

However, at present CPCG for Lambeth has imploded and needs our combined efforts to steady its present course and redirect the energy back into the issues of the day.

The Mayor has made his intentions clear with a new model replacing CPEGs / CPCGs. This will involve amalgamation of the current Community Police Engagement Group structure with the Met's Independent Advisory Group community engagement structure to avoid duplication, with members of these boards sitting on them for a maximum of three years and reserved places for Councillors and young people on each board. These measures will ensure both a regular refresh of opinions, strong linkage with the boroughs and a wide diversity of views.

This ultimately means change - however our role in the process is not clearly defined by Kit Malthouse's replacement Stephen Greenhalgh. The central Stop and Search group continues to work towards clarity and understanding of what this means for Borough-based community consultation.

## **The Challenge partnership and their work**

I have also been privileged to have worked with an extraordinary group of young people through the Challenge.

The young people designed and implemented campaigns based around issues relevant and important to them.

These were:

**Stop and Search** in Lambeth

**Organ donation** amongst African Caribbean populations or misconceptions around HIV in Lambeth

**Bridging the gap** between young people or "youngers" and the older members ("olders") of the community

**Bi-polar disorder**

The teams spent one day bringing their campaigns to the streets of Lambeth on 22nd September. They ran their campaigns, highlighting these issues in the local community.

I was kindly asked to attend in June 2012 as community representative of an organisation which had done much for the Borough of Lambeth the Community Police Consultative group. The day was spent discussing the issues with young people about

## Annual Report 2011/12

how they felt their campaigns were received and ways in which they can carry their message forward.

This is was a great opportunity to find out the issues that are important to a wide demographic of young people from Lambeth and discuss with them ways in which they can develop their ideas to ensure they have the most effective impact.

I would like to acknowledge the work of The Challenge and its team of workers and outstanding mentors and the 16-18 year old young people whom they have been working with to continue to be brave and fearless in putting their point across and educate their minds. It is for us, older members of the community, to embrace the young people of Lambeth who want to embrace responsibility but need our help.

## The Lambeth CPCG Sean Rigg Public meeting

I believe this meeting re-established what we are exceptional at as the whole audience was focused on accountability and transparency of the service providers.

This meeting provided an opportunity for the community to question the public authorities on the circumstances leading to Sean Rigg's death and also to learn what measures have been put in place to safeguard people in similar circumstances to Sean Rigg's, in the future.

I believe this meeting allowed members of the CPCG for Lambeth to probe issue relating to Section 136 of the Mental Health Act 1983:

*“Where there are occasions when the police may act if they think that someone is in need of immediate care or control. They have the power to remove someone to a 'place of safety' for their own protection, or the protection of others. Whereby they will be assessed by a doctor and interviewed by an approved mental health professional.”*

A place of safety could be a hospital or a police station. A police station should only be used in exceptional circumstances, such as a serious threat of violence or danger to people providing care or support. A person may be transferred from one place of safety to another before assessment.

Formal apologies from the statutory bodies had been conveyed to the family however the SLaM failure to actually deliver its' promised apology to the family was very shocking.

The question of effective communication and whether probationer police officers should be sent into volatile situations without the service perpetration skills necessary to deal with sensitive and vulnerable people were discussed.

We were fortunate to have as panel members:

The Rigg family:

**Samantha and Marcia Rigg**

Met Area Commander:

**Neil Vass**

Borough Commander:

**Matt Bell**

South London & Maudsley Director:

**Jill Locket**

The Independent Police Complaints Authority Director:

**Dame Anne Owers**

Lambeth Borough Community Safety:

**Ann Corbett** and  
**George Marsham**

CPCG's Mental Health Sub Group:

**Anna Tapsell**

Vice Chair CPCG:

**Lee Jasper**

Meeting was Chaired by:

**Wesley W-Stephenson**

I hope this meeting provided the group with a springboard to be utilised for the incumbent board and forth coming year as expertise is more needed now than ever before.

## **The changes and way forward**

## Annual Report 2011/12

I still believe the production of our Whose Shout Project still provides a blue print for dealing with some of the gaps within the Borough namely the mapping of our services private, public and voluntary. We also have a new Borough Commander **Matt Bell** who was awarded an MBE this year. He listened to the views of the wider community and the CPCG and also enabled and empowered individuals and groups to support issues facing his previous Borough.

## Deaths in Custody Panel

This panel was created as a result of the tragic death of Sean Rigg, following police contact in April 2012.

This ground breaking Panel was formed to look at creating innovative ways of implementing a framework of what happens when a critical incident occurs in the Borough of Lambeth. This panel has been supported by officers directly under the guidance of the Borough Commander together with the Community Engagement **Officer Errol Patterson** which has been priceless. I believe this gives us a unique approach to scrutinise processes and procedures the Metropolitan Police have in place so that lessons are learned and embedded. Also, any new Borough Commander or new recruits who serve the Borough of Lambeth have procedures and processes and we, as a community organisation, do not suffer from “Hamster Syndrome” - where we are constantly dealing with repeated issues making us question what is actually being learned. We believe this will help protect and serve the community leaving a legacy and not another project or report gathering dust on some governmental or Metropolitan police station shelf. This is evident from the issues following the death of Mark Duggan after “police contact” and the subsequent events which placed us all on the world stage for the wrong reasons and subsequent devastations which ensued.

This panel is Co-Chaired by:

**Matt Bell MBE:** Borough Commander Lambeth

**Wesley W-Stephenson:** Chair - CPCG for Lambeth

## In Closing lest I Forget / Acknowledgments:

I would like to thank the Board and the entire Membership for allowing me the opportunity to get us to this AGM. I have experienced your compassion and diligences during some really gut churning issues and harsh moments.



I have also seen others suffer personal tragedy who have never waned in their support of the CPCG.

I would also like to say thank you to **Mike Franklin** who has not only been an inspiration and a mentor but an excellent friend to the CPCG and to me.

Thanks also to **Jennifer Douglas, Arlene Mundle** and **Rose Butler**, the musketeers **Patrick & Brian Burgess, Peter, Jeremy** and **John** (who supported me when my life was threatened with a lethal weapon court case you not only believed in me but helped to restore my confidence and eradicate the nightmares I went through).

Thank you all for instilling reminding in me the ability to think, feel, embrace, empower and deliver in this arena and that the Thanks also for reminding me what CPCG stands for - something more than mere letters and words but an extraordinary group of people who have existed for the betterment of the residents of Lambeth, the Metropolis and beyond.

Finally to all the of Membership, previous Board Members, all the professionals who have worked with us and the Members who are sadly no longer with us whom I have worked with.

I acknowledge, salute and most of all thank you.

**Wesley Walters-Stephenson**

Chair - Community Police Consultative Group Lambeth



## Stop and Search Monitoring Group

I have been fortunate to have chaired the Stop and Search monitoring group monthly meetings and briefings from February 2012 as well as represent Lambeth at three central monitoring meetings and briefings with the Mayor's Office for Policing and Crime (MOPAC). I have successfully maintained consistent meeting as well as producing the minutes of monthly meetings

As Chair of the Stop and Search Monitoring Group I would firstly like to say thank you and good luck to our outgoing Superintendent Nick Sedgemore for his efforts and work with our Stop and Search Monitoring group.

I would also like to give a heartfelt thank you to our incumbent Superintendent David McLaren who has continued to support the work of this group through our monthly meetings.

I would further like to publicly acknowledge the unwavering support and work from Gill Kenealy, Lloyd Leon MBE and Fernando Senior without them the journey would have been harder.

It has been recognised that the involvement and empowerment of communities is essential with regard the success of policing in London more importantly Lambeth and therefore a key measure would be community monitoring.

### A brief guide

A decision was taken in 2004 to link both S&S and S&A as they are both monitored locally in Boroughs.

In September 2005, the Metropolitan Police Authority (MPA) Stop and Search Review Board (SSRB) a strategic committee and member led reformatted its membership to include community representatives. This was especially important for the Board as it was felt that the MPA would benefit greatly from community views on the review of the recommendations

The primary aim of Local Monitoring Groups (Independent Community Monitoring Groups (ICMGs) is to provide local communities with a voice into their local police about their experience of street intervention especially around stop and search. Independent Community Monitoring has been introduced to improve the confidence of the public in the way the police employ stop and search operations in their communities. To influence this important area of policing it is necessary to have an effective system of monitoring on what the police are doing and why. For this reason, the MPA recommended that ICMGs are put in place in all 32 boroughs.

The role of ICMGs are to act as independent overseers of local police functions at borough level;

to examine any apparent unfairness of the S&S practice; to challenge any unfairness identified; and support officers at borough level around stop and search activities such as engaging in borough initiatives.

## **Our work**

We have continued to meet from February 2012 underpinning our work **The Macpherson report of 1999**, which identified the use of stop and search by the police as a great source of tension. Of particular concern was the disproportionate use of the powers on members of ethnic minorities – especially young African-Caribbean men – under Section 1 of the Police and Criminal Evidence Act 1984 and Section 60 of the Criminal Justice and Public Order Act 1994.

We have held the borough not only to account but to look at best practice from other boroughs in the hope of making stops more effective.

We discussed central factors of those gangs who engage in serious crime and how they should be targeted more proactively.

We have met with the TSG:- where we discussed their presence in the borough as a proactive measure against criminality & examined extrapolation figures by the TSG in cumulative form, a request has been made for stand-alone figures to ascertain the aspect of judicial disposal or local resolution, together with S60 stops.

We further discussed the need to have the role of the CPCG involved with mediation / local resolution. This is to be clarified with the present Borough Commander Matt Bell, as this is a piece of work previously discussed under DCI Nick Sedgemore and the previous Borough Commander Sharon Rowe.

## **New officers on Borough**

### **The issue of mentoring & coaching**

New officers would go to Gypsy Hill with other community organisations to talk about community issues (such as disproportionality) & engagement.

Deviation from stop and search structure leads to a negative stop and search experience and erodes implementation of mechanism.

We have further discussed joined up work and the possibility of carrying Observation's to help enhance proficiency and accountability.

### **Stop It**

## Annual Report 2011/12

We continue to probe whether there has been an increase in positive outcomes as a result of the MPS intelligence led approach to S&S (regarding Stop It) and whether there has been an increase or decrease in disproportionality – and the reasons given by local officers we await an account for October / November 2012-13 period.

## New technology

THE STOP & SEARCH MOBILE PHONE APP: is now *available for free download on Blackberry App World! (Released on the 30/3/12)*

Stop and Search is a topic that is under constant scrutiny and public review. The “Stop and Search UK app” hopes to bring transparency and fairness to the stop and search procedure. The app was created by three young males **Aaron Sonson, Satwant Singh, Kenth and Gregory Paczkowski** from inner London who have all experienced being stopped and searched several times.

### Short Overview of the App

The app allows the user to view what their rights are in a stop and search situation and give feedback on their encounters with the Police quickly and easily using a medium that for the average person is easily accessible at all times - a mobile phone.

The app is divided into 3 key Features

#### 1) Know Your Rights

Shows why you may have been stopped and searched, what the correct procedure is and what your rights are in a stop and search situation.

Designed in an interactive comic book format to make it easy to read and attractive on the eye.

What's the point of Know Your Rights?:

- The aim of the Know Your Rights section is to add clarity to the stop and search procedure. It also aims to alleviate the feelings of confusion and frustration innocent people can feel if they are stopped and searched and do not know their rights.
- Typically know your rights information presented on conventional websites is difficult to process and leaves people feeling disengaged. The Stop and Search apps Know Your Rights section displays this information in an easy to understand and digestible format.

#### 2) Upload & Rate Your Experience

Upload how you were treated by the officer you were stopped and searched by using a set criterion of questions such as: How much respect do you feel you were shown? And how cooperative do you feel you were? Your age, sex and ethnicity.

#### 3: Upload your experience along with the badge/shoulder number of the officer you were stopped and searched by and the number of the stop and search slip.

Add any additional comments relevant to the stop and search.

You can manually input where the stop and search happened or automatically (using GPS) tag that the stop occurred at your current location.  
Checklist (\*optional and part of Uploading experience)

The point of the upload section will be used to show how people feel about stop and searches in different areas, also giving a detailed picture of what people experienced.

It also means that police officers can be held more accountable or rewarded if their badge numbers are recorded with positive or negative data.

It is no longer a legal requirement to record stop and accounts in many parts of the UK. We feel that there should still be an easy way for people to record this information so it can be analysed and reported about.

Although there are a lot of people who have had bad experiences with the police, a lot of them find it counter intuitive to then complain directly to the police. This app gives people a new way to safely upload their experience (anonymously) to a 100% independent group who can then help to build a picture of how the silent majority feel.

We believe this data should be free for the public to view, so we've added in a feature where people can see other stops that have occurred in a 10 mile radius of their location.

We believe displaying where other people have been stopped and searched in the community will further increase accountability. For example if there are a high number of stops on a particular street this can be brought to the attention of the local Police force with a view to seeing if these stop & searches were justified.

We've limited the experiences shown, to the local area (using GPS). Therefore, people do not have to worry about high internet usage. We will be releasing the data from the app for free via our site [www.stopandsearch.org](http://www.stopandsearch.org) (no personal data is collected or will be shown)

**Key aspects to note**

The app is 100% independent, made by young people affected by stop and searches and are trying to address the situation in a positive way. No personal data is obtained from the user. Each upload is anonymous.

## Data Extrapolation

**Annual Report 2011/12**

From 17th May :- \*The Metropolitan Police implemented a system to extract mobile phone data from suspects held in custody, Lambeth is one of the 13 trialling boroughs

The data includes call history, texts and contacts, the answers we await is does this constitute a breach as data is retained regardless of whether any charges are brought.\*

## **Pan-London anti-gangs strategy The London Crime Reduction Board (LCRB) is consulting on the LCRB**

We are presently engaged with formulating a response for initial draft strategy, which has been developed by MOPAC officers after initial consultation with colleagues from all agencies represented on the LCRB Delivery Management Group.

It aims to align a number of shared priorities across key agencies and London boroughs, identifying some immediate action points to reduce the impact of gangs in London over the next five years which will be reviewed (and potentially refreshed) on an annual basis.

MOPAC are now seeking further feedback from our stakeholders across the wider criminal justice system, including community groups and members of the public. Please feel free to disseminate this email further to any person(s) who may also have an interest / opinion on the development of this strategy.

### **Terms of Reference of the Stop and Search Sub Group**

- Oversee the effective implementation of Recommendation 61/Stop and Account and Stop and Search,
- Provide overview and scrutiny of the implementation of the scheme
- Monitor the impact undertaken through the receipt and interpretation of local data, reports and presentations and underlying issues relating to S&S
- Provide advice and information, to the wider community and support other boroughs with networking and sharing of good/best practice
- Request information such data reports, etc and the attendance of MPS, other partners and organisation/community representatives to support the monitoring process
- Bring issues to the attention of the MPA Stop and search Monitoring Network forum, local council and other key stakeholders.
- Facilitate discussions between the MPA/MPS, community groups and organisations concerning S&S activities
- Provide feedback to inform improvements of MPS Stop & Search practice to the MPA and MPS.

- Bring issues to the attention of the MPA S&S CMN Forum, local council and other key stakeholders.

#### Format of Independent Community Monitoring Group

To effectively have an impact on community confidence, community monitoring groups will need to be fully independent and challenging of the police. However, the experiences of both Hackney and Tower Hamlets boroughs, suggests that it takes time, commitment and resources to achieve effective monitoring, therefore the anticipation is that Community Monitoring Groups may fall into one of three categories: (these categories are not compulsive for all groups but are used as guidelines to assist and improve the monitoring process).

#### \* BRONZE

□ A group with community representatives fully supported and led by borough police officers in terms of a chairperson, administrative support and the provision of meeting premises. It is likely that many, if not, most groups will commence at this level. At Bronze and all other levels the MPA can play a valuable role in assisting, advising and supporting CMGs with concerns around Stop and Search monitoring and related policy issues.

#### \* SILVER

□ A group with increased community involvement (can start at this level); community representatives are appointed as chair and administrator for the meetings but rely heavily on the MPS's support to gain recognition and understanding of responsibilities. At this level the MPS continues to support the group.

#### • GOLD

□ A group could actually start at this level by forming an independent group that functions independently of the police in terms recourse (total management of the meeting but not compulsory in terms of venue). The group however, should be fully active in their community such as developing borough initiatives and awareness around stop and search as a whole. At this level the MPS is invited to attend to provide information requested for e.g. up to date clear and concise S&S data and any other related policing matters (such as complaints report, etc.) to be presented to the group as well as responding to other local policing issues that impacts on S&S activities in the borough.

#### **Wesley Walters-Stephenson**

Chair - Community Police Consultative Group Lambeth

## **Lambeth CPCG Mental Health Sub Group Report 2011/12**

This sub group was set up in 2004 following complaints about police behaviour towards detainees who were mentally disordered or learning impaired. The group at that time consisted mainly of carers and parents who found themselves seemingly helpless to engage either the police or the local NHS and social services in any helpful response towards a better understanding of the needs of their young people.

As a CPCG group we have tried to focus our energies on short term wins that have the effect of raising general awareness of the wider and longer term issues that need to be addressed.

Our first report highlighted the use of Section 136 of the Mental Health Act 1983, which allows the police to detain someone thought to be mentally disturbed in a public place. Whilst the intention of the Act is to ensure people can be taken to 'a place of safety' for a mental health assessment, we found that the police cells were too frequently used to detain ill people, some of who were there under Section 136, some of whom were not, having instead been arrested, usually for a minor offence.

We also found that police vehicles were too often used to transport ill people, either because an ambulance wasn't called, or because an ambulance wouldn't attend if there was any risk of violence. That view, which still prevails today, is completely contrary to the guidance issued by ACPO to police officers (presumably discussed with the ambulance services at some time), that police officers should accompany the ambulance crew if necessary for safety reasons, or medically trained staff should accompany the police in the police van or car that has to be used; but only when no ambulance was available.

Our report on these issues and others was sent to the MPA, but to little avail. However, it did lead to developments within Lambeth, led by George Marshman, Director of Adult Social Services, who convened a Working Party on the Police and Mentally Ill Detainees that has now developed into the Lambeth based Criminal Justice Executive Committee on the Police and Mentally Disordered Detainees. That work has resulted in community psychiatric nurses working within Lambeth's police stations to make a professional assessment of those who may need treatment or special care whilst being detained.

Our group has now grown to include those who are service users and those who work within the mental health services, both statutory and voluntary. Our objectives this year have continued to focus on the misuse of police vehicles for transporting people who need medical care and also on the growing need for adequate and special accommodation within the borough for the growing number of patients who are being discharged from hospital and prison without sufficient community support.

We welcome new members to the group. Because Lambeth CPCG is still getting itself straight after our move to Mowll Street in July, the group did not meet during the summer. We will, however be back on the job this autumn.

Huge thanks to the Independent Custody Visitors and Jane Warwick their Chair who never take the summer off, or any other time.

**Anna Tapsell**

Chair - Lambeth CPCG Mental Health Group



## Safer Neighbourhood Panels

The Safer Neighbourhood initiative aims to bring Policing closer to the community at a Ward level. Each safer Neighbourhood has a dedicated team of Police Officers and Police Community Support Officers with a Sergeant as the Commanding Officer (Known as SNT) as well as a community panel of local residents and businesses, who help to set priorities for the team. This group is what is known as the Safer Neighbourhood Panel (SNP). To date, Lambeth have about 27 effective wards.

Lambeth Community Policing Consultative Group in recognition of the vital roles SNP in the community policing deemed it fit to reserve a seat in the Board for a representative of the Safer Neighbourhood Panel. I have represented the SNP on the Board in my capacity as the Chair of Streatham Wells SNP since 2010. Some of our achievements at the ward level were the establishment of Youth Panel at Bishop Grant Thomas College in Streatham and engagement of the Youths in the Summer Projects. My tenure as a Board member of the CPCG was a continuation of the goodwill built by my predecessor. It saw the conception and launching of Operation Hannah.

Operation Hannah is a reshaping of the Neighbourhood policing and Response Teams for effective, on the ground crime prevention and policing in the Borough based on six clusters. Initially, we expressed concerns about the increased workload on the Safer Neighbourhood Sergeants as the wards were merged due to the loss of Sergeants and there are interest to find out how this pressure on numbers will play into Hannah. The report so far from the six clusters, indicate that the Sergeants are managing to cope despite the attendant pressures. It is left to see how the Coalition cuts will impact on the number of frontline Officers in the Borough and in London as a whole.

With the launching of the Operation Hannah (which is a pilot scheme) in Lambeth in February 2011, the commitments of the Panels in the community policing within the Borough continues to be on the upbeat. The authorities at the Metropolitan Police are watching closely its' success with the intention of introducing it into other London Boroughs. At this point, it is pertinent to mention the Architect of Operation Hannah, Commander Nick Ephgrave who throughout his tenure as the Borough Commander maintained an extremely cordial relationship not only with the Rank and File under his command but with the entire community. He had a particular soft spot for the Youth and was often seen "doing the Beat" on his own. It is of great interest to note that his successor, Commander Matt Bell, is also gradually carving a niche for himself with community policing at the core of his policy and priority both in words and in deeds.

On a personal note, I most sincerely wish to express on behalf of the entire Lambeth Safer Neighbourhood Panels our profound gratitude to Chief Inspector Patrick Beynon (RTD) for his untiring efforts in ensuring that Safer Neighbourhood Panels in the Borough functions effectively. He was extremely supportive, beyond the call of duty and communicated regularly on ground level with all and sundry. He was always seen in various events organised in the Borough. Chief Inspector Pat Beynon gave the Metropolitan Police a human Face and will surely be missed. Special mention should be made of his assistance and fatherly advice during the

**Annual Report 2011/12**

formation of the Lambeth Black Families Forum after the death of Zac Olumegbon. We wish him and his family a happy retirement.

Since my Board membership, the relationship between the SNP and the CPCG has been nurtured through our active participation and contributions at meetings to a matured growth which needs to be strengthened by the incoming SNP Board member. On my part I will simply say "It has been a worthy experience and I enjoyed every single moment in the service of my community. It is an immense privilege to know and work with such dedicated people on the Board and the entire family of the CPCG which I still belong."

**Felix Ogbogoh**

## Honorary Comptroller's Report

The preoccupation of the Board this year and my duties in particular revolved around one issue: whether or not our CPCG could remain viable in 2012/13. The cuts in funding started by the MPA were likely to be sustained as the Mayor's Office took over responsibility for allocating the diminishing amount of funding for engagement groups throughout London. Like other CPEGs we had come through the first year of a three year process of cutting all CPEGs funding by 50%. Next year, the third year of this cutting process, even if we were to continue to again be awarded the maximum amount awarded to only those CPEGs who were considered first class, we would be barely viable.

Our situation in November, when I took over the Hon. Comptroller role, was that we had employed in January 2011 two part-time members of staff, one to implement "Whose Shout" the recommendations from which having been agreed by our Members the previous year, and the other staff member to take full responsibility for implementing Board decisions and administering the office; there were areas of responsibility that had to be shared to ensure continuity throughout the week. Each contract was for one year only, so my preoccupation was to find enough funding from our budget to retain both staff members in order to fulfil our agreed work programme. In the event I am glad to say we managed to extend both staff contracts until the end of June 2012, when we ran out of options

That extra time allowed us to fulfil one part of the work programme agreed by the MPS: to produce three productions of the New Talk project, first seen at the 2011 Country Show, created and produced by our Outreach Engagement Manager, Ros Griffiths. Enthusiastically received, Ros set about preparing for the next one, to be held at the Lilian Baylis Technical College in Vauxhall greatly aided by SE1 United, a voluntary group we had worked with before, who received some funding from the MPS Proceeds of Crime Fund to administer the event and partially meet the cost, some of which SE1 contributed themselves.

Although the Community Safety Unit and the local police expressed enthusiasm for New Talk the concept of how we linked that to the recommendations in Whose Shout was problematic. It was one thing to find a marvellous way of engaging young people in discussion but quite another to continue to keep them engaged and ensure that their voices continued to be heard by those with the power to initiate change. On advice from the Council and Lambeth Police the third New Talk was held at the Jubilee School on Tulse Hill, an area that had suffered greatly from gang criminality and there were also some wonderful individuals living and working in the community to improve everyone's safety and environment on and around the Tulse Hill Estate Estate.

Once again the project, held in May, had lots of appeal and approval all round. But sadly nothing remains of the event for Lambeth CPCG to build on. When Ros's contract ended in June all the information she had, including that on her CPCG computer, went with her.

Our application for funding and our 2011/12 work plan went to the Mayor's Office in March 2012. Luckily we were once again awarded the maximum grant available and our work plan was accepted. Even so, it was clear to see that we could not continue to provide the level of engagement we had managed before, nor could we continue to keep a full-time staff member, or equivalent, as before.

## **Annual Report 2011/12**

In proposing a cuts package for the Board I was especially sad that we could no longer hold monthly public meetings whilst keeping enough in reserve to be able to respond to important events, such as the Inquest findings into the death of Sean Rigg. Neither could we continue to afford our office premises at the Eurolink Centre in Effra Road.

Finding accommodation at affordable rent yet large enough for Board or Management Committee meetings is a major problem for the voluntary sector everywhere, as are venues for public meetings in Lambeth. We have been fortunate that our Councillors have ensured that we can meet within the Town Hall on six occasions during the year and long may this continue. However, finding a cheaper office big enough for Board and Sub Group meetings has not been easy. We finally moved in the middle of July this year into the Co-op Centre in Mowll Street, off the Brixton Road and but we are still not totally unpacked, despite the hard work of DM John our Executive Officer.

Our certified accounts are contained within this Annual Report. Companies House does not require very small organisations such as ours to have their accounts independently audited. They do, however, require that they are duly certified by a qualified accountant (Section 476 and 477 of the Companies Act 2006). The Board is grateful to Andrew Thurburn & Co, Chartered Accountants, who have fulfilled this role since the MPS devolved their financial control of our budget in 2000.

At the same time of course, the MPS also ceased to directly employ CPEG staff; we had two at the time. That was the reason why all the CPEGS had to either have their funding filtered through their local authority or set themselves up as a Company Limited by Guarantee in order to comply with employment legislation and funder's requirements. The latter choice ensured a level of independence from the local authority, which was then crucial to our purpose, as it remains today.

That decision was unanimously ratified by our membership in 2004.

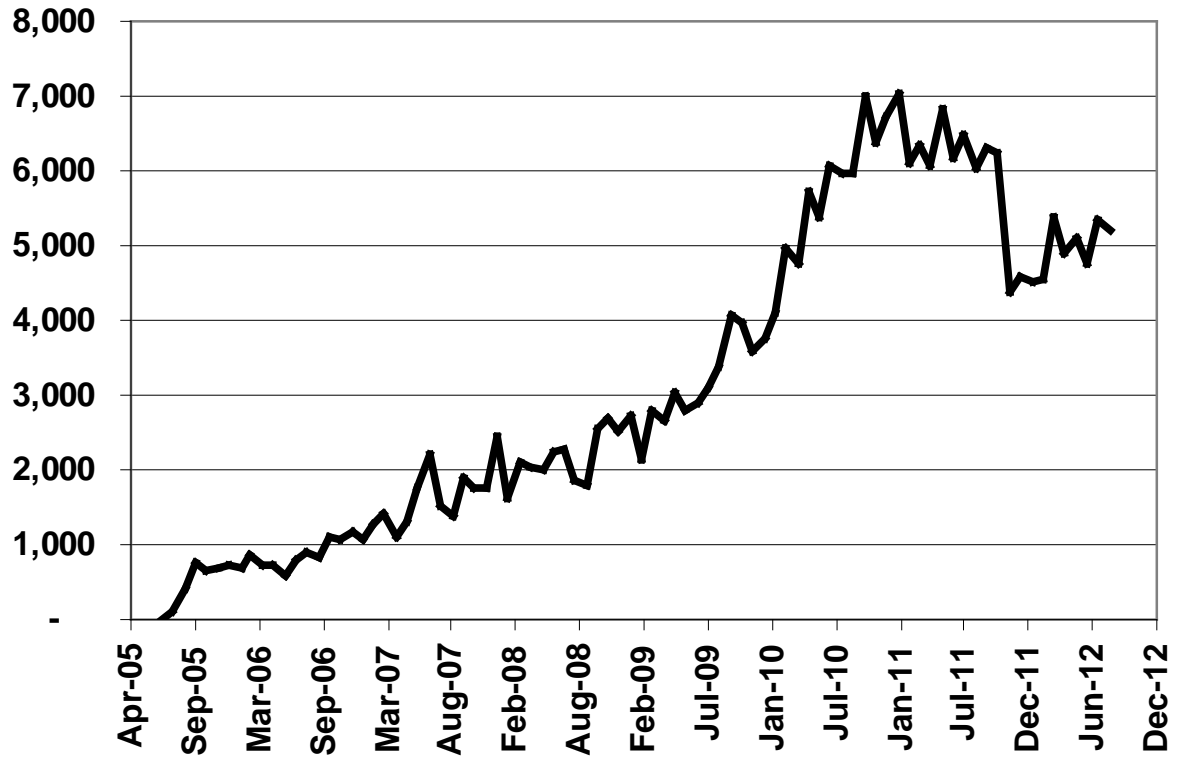
The reason I mention this in an Annual Report 2011/12, is that these matters have become a part of the on-going campaign of vilification led by a small group of members that has undermined the work of our CPCG in the past five months, sapping our energy, commitment and passion for justice. No voluntary group can survive, let alone thrive, in such an environment.

I am grateful to Jim Toohill for his on-going advice and support and of course, to DM John our Executive Officer who has been subjected to a great many ordeals this year and has never complained.

**Anna Tapsell**

Honorary Comptroller 2011/12

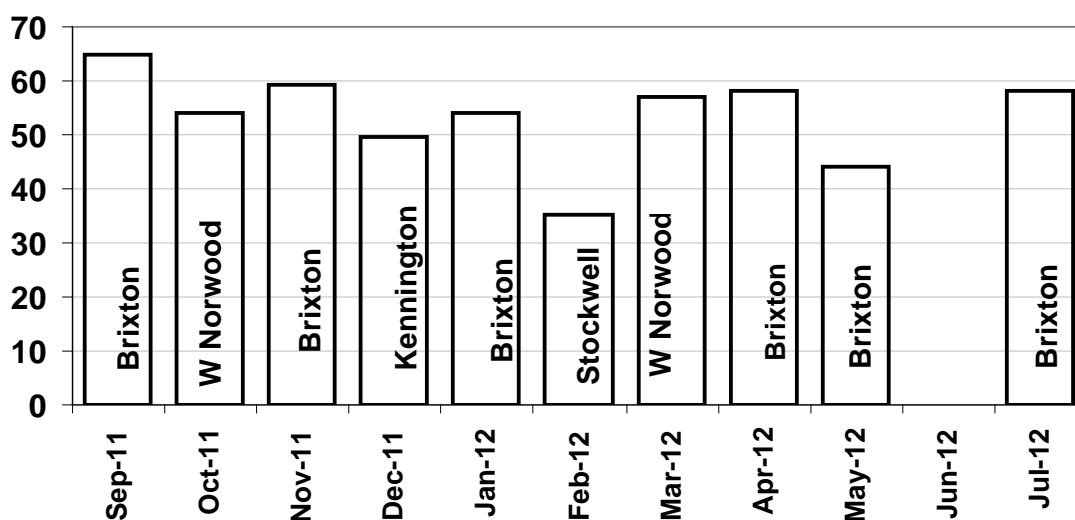
**Website**



**UNIQUE VISITS TO CPCG WEBSITE EACH MONTH**

A 'Unique Visit' is one where the visitor loads more than one page. Statistics include all domains

**Monthly Public Meetings**



**ATTENDANCE AT CPCG MONTHLY PUBLIC MEETINGS**

There was no meeting in June 2012

| MONTH   | THEME                    | PRESENTERS  |
|---------|--------------------------|---|
| Sept 11 | Police Round-up          | MPS Lambeth   |
| Oct 11  | MPA Report               | Val Shawcross   |
| Nov 11  | Operation Hannah         | MPS Lambeth   |
| Dec 11  | Prison / Probation       | Governor Edmond Tullett<br>Brixton Prison<br>Adam Kerr<br>London Probation Services |
| Jan 12  | MPA to MOPC              | Anna Tapsell  |
| Feb 12  | Stop and Search (S&S)    | Commander Tony Eastaugh   |
| Mar 12  | 2012 Olympics            | Commander Bob Broadhurst  |
| Apr 12  | New Trident Gang Command | DCI Lee Watling   |
| May 12  | Disabilities and Crime   | MPS & LBL   |
| Jul 12  | Hate Crimes<br><br>LGBT  | Simon Froud & Colleagues<br>LBL<br>Mark Oakley                                      |

| Membership                            | Number | White:BME                     | Female: Male | Faith         |
|---------------------------------------|--------|-------------------------------|--------------|---------------|
| Individual                            | 55     | 28:27                         | 29:26        | -             |
| Community and Voluntary Organisations | 42     | 4 specifically for BME groups |              | 5 faith based |
| Safer Neighbourhood Panels            | 2      | -                             | -            | -             |
| Statutory Organisations               | 7      | -                             | -            |               |
| Mailing List                          | 853    |                               |              |               |

- Includes Latin American people

In a borough with a 25% annual 'churn' (population moving in and out of the borough), maintaining a clean mailing list is an important activity. During the year, we had a major clean-up of the database (of dead email addresses or returned mail, for example). The underlying dynamic of the database is shown in the table below:

| Opening Mailing List | Lost through Churn | New Recruits to Mailing List | Closing Mailing List |
|----------------------|--------------------|------------------------------|----------------------|
| 816                  | 20                 | 157                          | 853                  |



Finance

**CPCGLambeth**

**Annual Accounts 2011/12**

| <b>Expenditure</b> |  | <b>2011/12</b> | <b>2010/11</b> |
|--------------------|--|----------------|----------------|
| <i>Notes</i>       |  | <b>£</b>       | <b>£</b>       |
|                    | <i>Employment Costs</i>                |                |                |
|                    | Salary Costs                           | <b>35,441</b>  | 15,093         |
|                    | Recruitment Costs                      |                | 3,408          |
|                    | <i>Non-Employment Costs</i>            |                |                |
|                    | Travel                                 | 24             | 6              |
|                    | Telephone, Fax and Broadband           | 1,199          | 1,084          |
|                    | Room Hire                              | 935            | 420            |
|                    | Accommodation Costs                    | 9,339          | 9,476          |
|                    | Refreshments                           | 577            | 1,485          |
|                    | Professional Services                  | 1,574          | 2,461          |
|                    | Postage & Printing                     | 779            | 3,391          |
|                    | Office Supplies                        | 486            | 1,558          |
|                    | Office Equipment                       | 88             | 343            |
|                    | Depreciation on tangible fixed assets  | 831            | 1,941          |
|                    | Country Show                           | 1,370          |                |
|                    | Sundry                                 |                | 71             |
|                    | Conference/Training                    | 125            |                |
|                    | <i>Total Non-Employment Costs</i>      | <b>17,327</b>  | 22,236         |
|                    |  | <b>52,768</b>  | <b>40,737</b>  |
| <br>               |  |                |                |
|                    | <b>Income</b>                          | <b>2011/12</b> | <b>2010/11</b> |
| <i>Notes</i>       |  | <b>£</b>       | <b>£</b>       |
|                    | MPA - Grant                            | 43,750         | 50,000         |
|                    | MPS - Contribution to Refreshments     |                | 500            |
|                    | <i>Other</i>                           | 374            |                |
|                    |  | <b>44,124</b>  | <b>50,500</b>  |
|                    | <b>Net (Deficit) Movement in Funds</b> | <b>(8,644)</b> | <b>9,763</b>   |

## Balance Sheet Movements

|                                    |               |
|------------------------------------|---------------|
|                                    | £             |
| Cash in hand and at Bank 31/3/2011 | 22,100        |
| Debtors at 31/3/2011               | 548           |
| Creditors at 31/3/2011             | 2,180         |
| Tangible Fixed Assets at 31/3/2011 | 1,545         |
| <b>Total Assets at 31/3/2011</b>   | <b>22,012</b> |
| <br>                               |               |
| Movement on Total Assets 2011/12   | (8,644)       |
| <b>Total Assets at 31/3/2012</b>   | <b>13,368</b> |

## Balance Sheet at 31 March 2012

|                                  |               |
|----------------------------------|---------------|
|                                  | £             |
| <i>Current Assets</i>            |               |
| Cash in Hand and at Bank         | 12,504        |
| <i>Debtors</i>                   |               |
| <br>                             |               |
| Southwark PCCG (Country Show)    | 150           |
| <i>Current Liabilities</i>       |               |
| <br>                             |               |
| <b>Net Funds at 31/3/2012</b>    | <b>12,654</b> |
| <br>                             |               |
| <i>Fixed Assets</i>              |               |
| Tangible Assets                  | 714           |
| <b>Total Assets at 31/3/2012</b> | <b>13,368</b> |

# ANNUAL ACCOUNTS

## Appendix: Membership and Board

Membership during CPCG year 20011/12 (July to July) with those who have joined since, up to the time of publication, shown \*

### Community and Voluntary Organisations

**Angell Town Tenants Management Organisation** Cathy Valentine  
**Bathesda Ministries UK** Ervell Bailey, Dionne Lamont  
**Brixton Domino Club** Lloyd Leon MBE  
**Brixton Market Traders Federation** Stuart Horwood, John Gordon  
**Brixton Society** Doye Akinlade, Ian Warner  
**Churches Together in Brixton** Rev Stephen Sichel  
**Churches Together in Clapham** Elizabeth Gibson, Anna Long  
**Clapham Community Partnership** Ros Munday  
**Clapham and Stockwell Faith Forum** Catriona Robertson  
**Clapham Sector Working Party** John Wainwright  
**Clapham Town Neighbourhood Watch** Peggy Tyler, Wally Channon RIP  
**Cressingham Gardens Tenants and Residents Association** Sandra Moodie  
**Flipside** Jean Carpenter  
**Forum of Portuguese and Spanish Speaking Communities – Lambeth** Myriam Hay  
**Friends of Brockwell Park** Robert Holden  
**Herne Hill Forum** Nick Abengowe  
**Herne Hill Society** John Frankland  
**HM Prison Brixton Independent Monitoring Group** Phyllis Jackson  
**Kennington Sector Working Party** Michael Somers  
**Lambeth Older People's Forum** Martin Walsh  
**Lambeth Summer Projects Trust** Nick Mason  
**Lambeth Towers and Lambeth Road TRA** Arulini K. Velmurugu  
**Lambeth Women's Aid** Mary Ann Mhina, Jane Warwick  
**Milkwood Residents Association** Maude Estwick, Hazel Watson  
**NACRO** Tony Chrouch  
**Popular Youth Association** Rowena Estwick  
**St Matthew's Estate** Sheila Draper  
**Queen Mother Moore School** Clarence Thompson MBE  
**South London Synagogue** Dr Brian Mantell  
**Stockwell Park Residents Association** David Tomlinson  
**Streatham Common Southside Neighbourhood Watch** Anna Hunter  
**Streatham Southern Sector Working Party** George Tuson  
**Tulse Hill TRA** Kathy White, Rhoda Anderson  
**Victim Support Lambeth** Nadia Inwood

## Annual Report 2011/12

**West Indian Ex-Servicemen's Association UK** Vince McBean, Neil Flanigan, Jim Fairweather,  
Keith Shaw

**West Indian Standing Conference** Hedley Johnson

**Your Story** Vacant

## Safer Neighbourhood Panels

**Streatham Wells Safer Neighbourhood Panel** Felix Ogbogoh

**Herne Hill Safer Neighbourhood Panel** John Frankland

## Statutory Organisations

**British Transport Police** Insp. Ian Mixter

**Crown Prosecution Service** Martin Ryan

**HM Prison Brixton** Amy Rees

**London Borough of Lambeth Council (post-May 2009)** Cllr. Kingsley Abrams; Cllr. Mark Bennett;  
Cllr. Diane Braithwaite; Cllr. Lorna Campbell; Cllr. Betty-Evans-Jacas; Cllr. Rachel Heywood; Cllr.  
Stephen Morgan; Cllr. Graham Pycock; Cllr. Imogen Walker

**London Borough of Lambeth Council (post-May 2010)** Cllr Mark Bennet, Cllr Lorna Campbell, Cllr  
Rachel Heywood, Cllr Jack Hopkins, Cllr Julia Memery, Cllr Kita Ogden, Cllr Mike Smith, Cllr Imogen  
Walker

**London Borough of Lambeth Council (post-March 2011)** Cllr Lorna Campbell, Cllr Rachel  
Heywood, Cllr Jack Hopkins, Cllr Kita Ogden, Cllr Mike Smith, Cllr Imogen Walker, Cllr Shirley  
Cosgrave, Cllr Jennifer Braithwaite

**London Borough of Lambeth Council (post-March 2012)** Cllr Lorna Campbell, Cllr Rachel  
Heywood, Cllr Jack Hopkins, Cllr Mike Smith, Cllr Imogen Walker, Cllr Shirley Cosgrave, Cllr Jennifer  
Braithwaite, Cllr Judith Best

**London Borough of Lambeth - Community Safety**

George Marshman, Ann Corbett

**London Probation Service** Adam Kerr

**MPA Link Member** Caroline Pidgeon

**MPS Lambeth** Ch Supt Matt Bell

**Panel of Independent Custody Visitors for Lambeth** Jane Warwick MBE

## Individual Members

|                    |                   |                 |
|--------------------|-------------------|-----------------|
| Paul Andell        | Shane Collins     | Zoe Fonteyn     |
| Kevin Aboyade-Cole | Habiba Compaore   | Gloria Gomez    |
| Hope Barrett       | Julia Cordero     | Tia Henry-Lindo |
| Pauline Bower      | Richard G. Dutton | Nick Horley*    |
| Ivelaw Bowman      | Marlene Ellis     | John Howard     |
| Rod Brown          | Betty Evans-Jacas | Lena James      |
| Alrick Cambridge   | Rosemarie Falaiye | Lee Jasper      |

## Annual Report 2011/12

|                   |                      |                           |
|-------------------|----------------------|---------------------------|
| Gill Kenealy      | James Osho           | Anthony Thomas            |
| Adam Kerr         | Brian Parker         | Devon Thomas*             |
| Adrian King       | David Pinder         | Sonia Timlett             |
| Penelope Klees    | David Prichard-Jones | Jim Toohill               |
| Veronica Ledwith  | Juneary Raymond      | Mike Tuppen               |
| Elaine Lilley     | Clovis Reid MBE      | Steve Wahab Bolarinwa     |
| Bancroft McCarthy | Cheryl Sealey        | Wesley Walters-Stephenson |
| Hannah Mir        | Fernando Senior      | Hilary-Claire Wears       |
| Patricia Moberly  | Benjamin Simbo       | Julia Wolton              |
| Richard Moore     | Jean Slater          |                           |
| Clare Moore       | Anna Tapsell         |                           |

### Board 2011/12

#### Individual Membership:

Paul Andell (Vice-Chair); Hannah Mir (2<sup>nd</sup> Vice-Chair), Lee Jasper (2<sup>nd</sup> Vice-Chair), Clovis Reid MBE, Anna Tapsell (Honorary Comptroller) Wesley Walters-Stephenson- 2<sup>nd</sup> Chair

#### Community and Voluntary Organisations:

Clarence Thompson (Queen Mother Moore School - Chair); Sandra Moodie (Cressingham Gardens TRA – Vice Chair); Myriam Aquilar Hay (Forum for Portuguese and Spanish Speaking Communities – Lambeth); Lloyd Leon MBE (Brixton Domino Club); Jane Warwick (Lambeth Women’s Aid)

**Safer Neighbourhood Panels:** Felix Ogbogoh (Streatham Wells Safer Neighbourhood Panel)

**Executive Officer:** DM John

| Board Member              | AGM Last Elected | AGM Term Ends | Expenses Claimed 2011/12 |
|---------------------------|------------------|---------------|--------------------------|
| Myriam Aquilar Hay        | 2011             | 2012          | NIL                      |
| Paul Andell               | 2011             | 2012          | NIL                      |
| Lloyd Leon MBE            | 2011             | 2012          | NIL                      |
| Hannah Mir                | 2011             | 2012          | NIL                      |
| Lee Jasper                | 2010             | 2012          | NIL                      |
| Sandra Moodie             | 2010             | 2012          | NIL                      |
| Felix Ogbogoh             | Coopted-2011     | 2012          | NIL                      |
| Clovis Reid               | 2010             | 2012          | NIL                      |
| Anna Tapsell              | 2009             | 2012          | NIL                      |
| Clarence Thompson         | 2010             | 2012          | NIL                      |
| Wesley Walters-Stephenson | 2011             | 2012          | £20.50                   |
| Jane Warwick MBE          | 2009             | 2012          | NIL                      |

| Board Member      | Declared Interests  |
|-------------------|---|
| Clarence Thompson | Queen Mother Moore School   |
| Paul Andell       | Employment - Crime Reseach / Youth Community & Social Work Training<br>Political Affiliations - Labour<br>Member – Friends of Vauxhall Gardens  |
| Lee Jasper        | Director - Brixton Splash Ltd   |
| Sandra Moodie     | Chair - Cressingham Gardens T.R.A.  |
| Ros Munday        | Director – LVAC<br>Char - Clapham Town Safety Neighbourhood Panel<br>Member – Lambeth Tenants Council Executive   |
| Felix Ogbogoh     | Streatham Wells Safer Neighbourhood Panel<br>Lambeth Black Families Forum<br>Streatham Action Group   |
| Clovis Reid       | Employee NACRO  |
| Anna Tapsell      | <p>I am an Associate Mental Health Act Manager for the South London and Maudsley Foundation Mental Health Trust. That is an appointed role delegated by the Non Executive Directors of the Trust Board to provide to an independent hearing, which has the power of discharge, for those who wish to appeal against their detention under Sections of the Mental Health Act 1983 as amended in 2007. The position is not salaried but a token sessional payment is awarded.</p> <p>I am a long standing member of Lambeth Women's Aid Management Committee and Lambeth Domestic Violence Forum and MARAC. All these positions are voluntary and unpaid.</p> <p>I am the Chairperson of the Kennington Association which is a voluntary and unpaid role. The KA has a Planning Forum and a Business Network as well as a number of other subgroups concerned with the interests of local residents and it also raises money through its activities to benefit community needs. It is non party political and non- sectarian.</p> <p>I have no party political affiliations.</p> <p>I am a non religious Jew.</p> |



| <b>Board Member</b>       | <b>Declared Interests</b>  |
|---------------------------|--|
| Wesley Walters-Stephenson | Membership - Kiwaris / Your Story  |
| Jane Warwick              | Rapley Report Steering Committee; Treasurer Lambeth Women's Aid; Chair Lambeth Independent Custody Visitor's Panel; Independent Custody Visitor; CPCG Stop and Search Panel. |

**Annual Report 2011/12**

**Contact Details**

Unit 5  
The Co-op Centre  
11 Mowll Street  
LONDON  
SW9 6BG

T: 020 3638 3494

E: [admin@lambethcpcg.org.uk](mailto:admin@lambethcpcg.org.uk)

W: [www.lambethcpcg.org.uk](http://www.lambethcpcg.org.uk)

Company Limited by Guarantee, Registration No:5623445