

## **IPCC Investigation into the shooting of Jean Charles de Menezes**

Shortly after the start of their inquiry into the shooting of Jean Charles de Menezes, in response to community representations, the Independent Police Complaints Commission invited four organisations to each provide a representative to form a 'Community Reference Group'. The four organisations are the Latin Front, the Muslim Safety Forum, the Refugee Council and CPCG for Lambeth

The Reference Group's purpose is to provide an independent community perspective to the issues under investigation, advising the Commission on community concerns in order to enhance the quality of the investigation. CPCG is hosting a page on its website to facilitate input from the general public in addition to that garnered by the four organisations through their networks.

## **AGM Voting**

Voting at the AGM was as follows

	To Register as a limited Company	To Accept the Accounts	To adjourn the AGM to October
For: Present	25	24	25
For: Postal	5		5
For: Proxy	1		1
Against	0	0	0
Abstentions	0	0	0

## **Annual Report**

Members who were not at the AGM (and affiliate organisations who weren't present) and therefore unable to pick up a copy, have been mailed one. Feedback to date has been positive. The Report will be presented to the resumed AGM on 18 October for acceptance. It should not be published until then.

Distribution will include print and CD, the latter will also carry all Minutes, Briefings, Presentations and Reports from the year (these materials are now also available at [www.lambethcpcg.org.uk](http://www.lambethcpcg.org.uk)).

## **Elections Timetable**

26 September	Despatch of nomination papers and formal notice of resumed AGM
5 October	Closing date for nominations

7 October	AGM papers despatched, including ballot papers. Votes may be postal, proxy nominations or in person at the AGM.
17 October	Deadline for Postal Votes/Proxy nominations
18 October	Resumed AGM

### **Lambeth Labour Party Crime Policy Seminar**

Over the summer, Cllr. Peter O'Connell (London Borough of Lambeth Labour Group) contacted the Lambeth CPCG with an invitation to some of our members to attend the Labour Group's "Crime: A Policy Development Seminar." in September.

We are of course fastidious in maintaining political impartiality but also keen to foster engagement in civil society and healthy debate.

We therefore decided that it would be acceptable to relay these invitations (which were to individuals drawn, by the Labour Group, from the membership list in the Appendix to our Annual Report), subject to:

- No personal details would be passed out from CPCG;
- We would likewise relay invitations for any *bona fide* group, political or otherwise, within the borough to events of relevance to CPCG's aims;
- Any CPCG member attending the seminar would be doing so in a personal capacity and their personal views should not be represented as those of CPCG;

We shall be happy to extend the same facility to any of the political groupings within the borough. The Chairperson has written to all three borough party leaders explaining that position.

### **Sub-Groups**

The Mental Health Sub-Group's submission to the MPA-NHS Joint review has been distributed and received positive feedback. The MPA have asked to publish the submission on their website (the submission is also available on the Group's website). The Stop and Search Sub-Group is working on a report summarising work to date. Interim papers and presentations are also available on the CPCG website.

### **Home Office Consultation**

It is not widely appreciated that the powers available to PCSO's (of detention, searches and so on) are not uniform across the country and that in London they are approved at Borough level. The Home Office have issued a consultation on proposals to standardise these powers. Details are at :

<http://www.homeoffice.gov.uk/inside/consults/current/index.html>

and the closing date is 26 October.

## **Diamond Bulletins**

CPCG distributed this MPS produced bulletin (which covers issues following on the summer's incidents) to its email list through July and August. The bulletin is now distributed directly from MPS, to individuals who register with [www.police.uk](http://www.police.uk). There have been problems with the distribution, but the bulletin can be accessed directly at [www.police.uk](http://www.police.uk).

## **Race Hate Crime Co-ordinator**

Lambeth Crime Prevention Trust have made this appointment. Yvonne Okiyo will take up the post on 3 October.

## **Commendation**

Jane Warwick (Individual Member) has received a Borough Commander's Commendation in recognition of her work, over many years, for CPCG, for the Panel of Independent Custody Visitors and for the Appropriate Adults scheme. Congratulations on a well deserved award.

## **'The Beat'**

"The Beat", a Safer Neighbourhood and Community Police office, is now open at 411 Coldharbour Lane.

## **Brixton Town Centre**

Concerns over levels of crime and anti-social behaviour are frequently brought to CPCG meetings and communicated to the Group in other ways. The Safer Lambeth Partnership has called a public meeting at the Assembly Hall, Wednesday 28th September at 6:30 pm to discuss work underway and proposals to tackle this problem.

## **Responses Anti-Social Behaviour**

As commented in the Annual Report, effectiveness and proportionality are issues that the Group will need to address in the year ahead. A useful, readable background is available in 'Anti-Social Behaviour Strategies; Finding a Balance' from the Rowntree Trust (available at

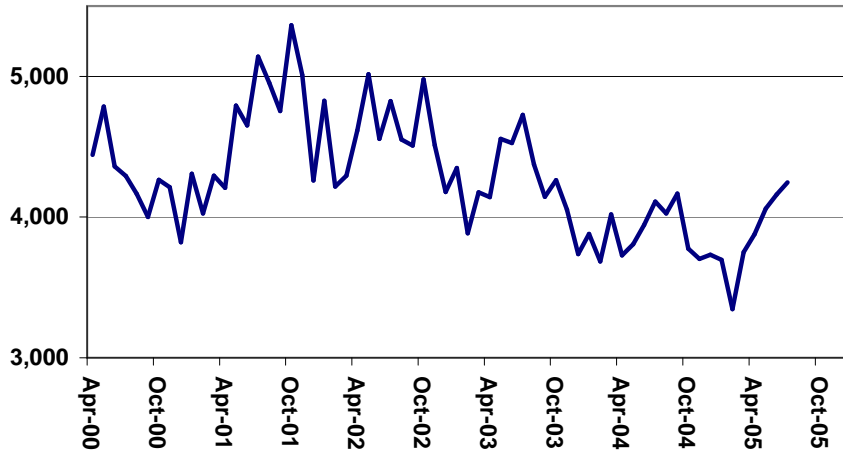
<http://www.irf.org.uk/bookshop/eBooks/1861347774.pdf>

Or from the Group Office)

## **Next Meeting:**

**6.00 p.m. TUESDAY, 4 OCTOBER 2005 at Lambeth Accord**

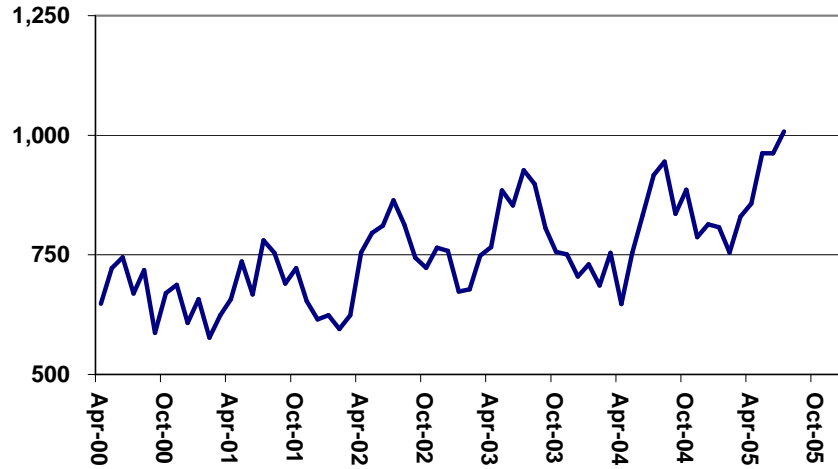
**Lambeth - Total Notifiable Offences**



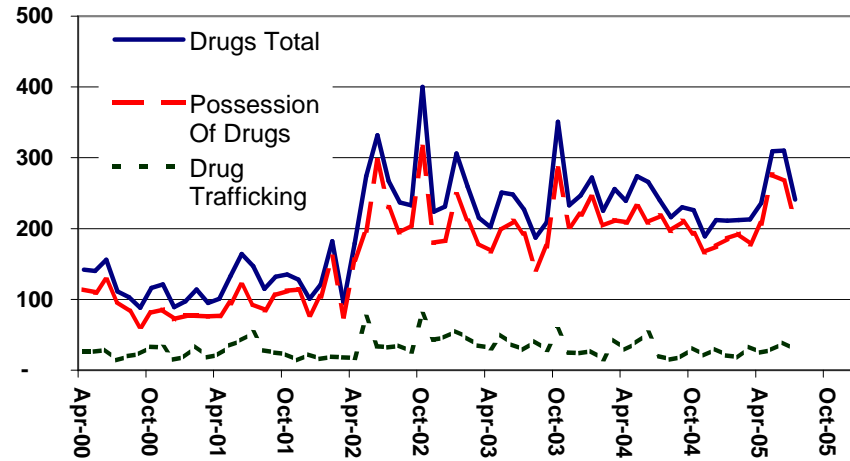
**Lambeth - Street Crime (Personal Robbery plus Snatches)**



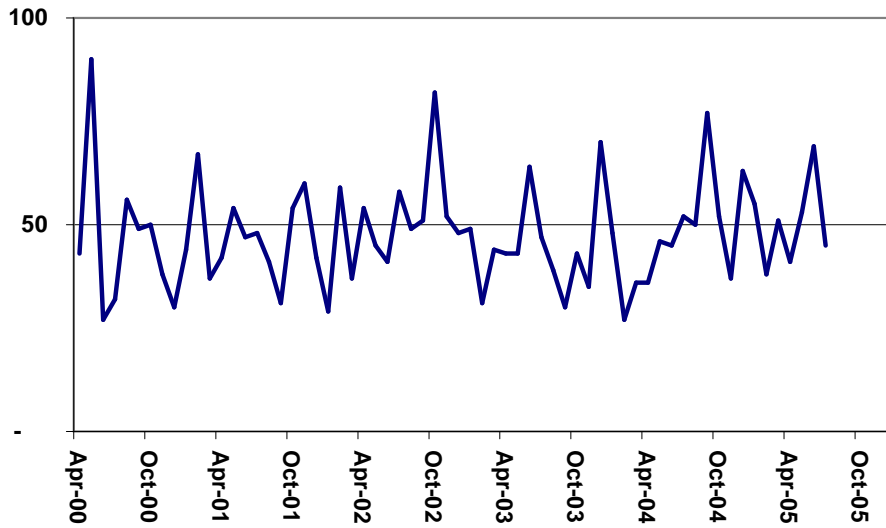
**Lambeth - Violence Against the Person**



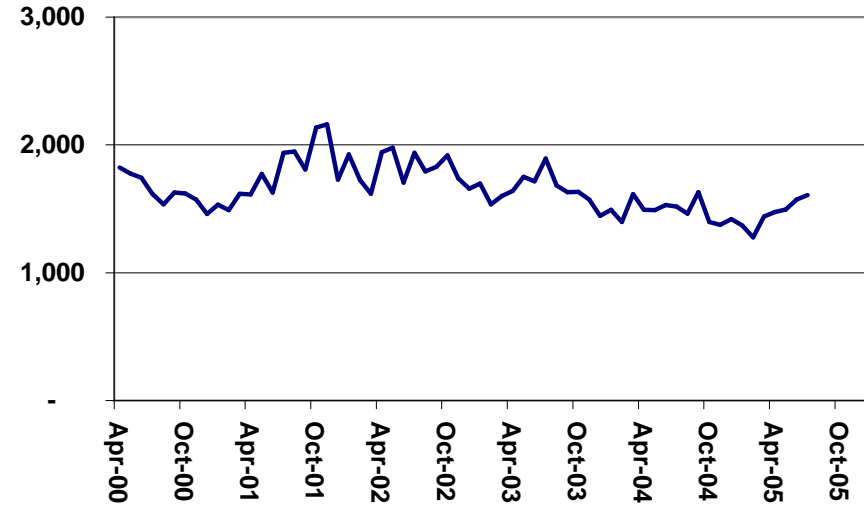
**Lambeth - Drug Crime**



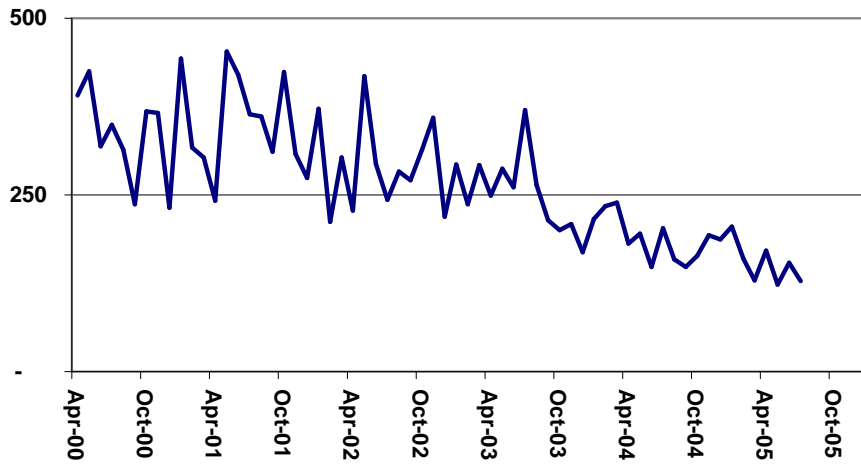
**Lambeth - Sex Offences**



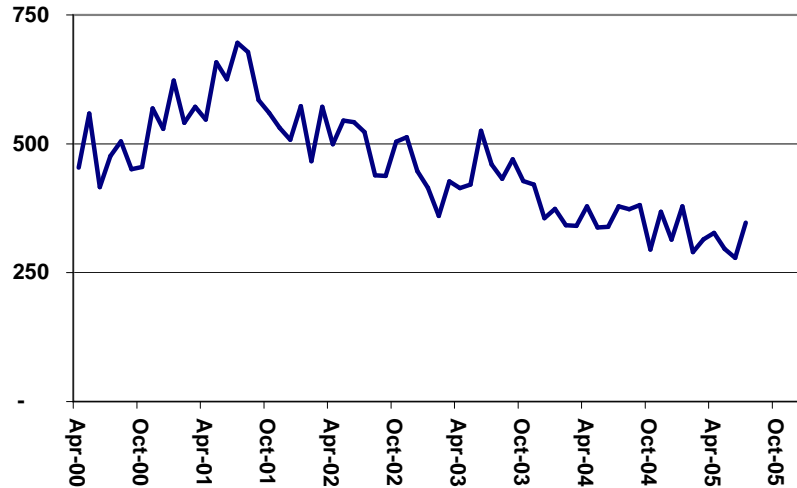
**Lambeth - Theft and Handling**



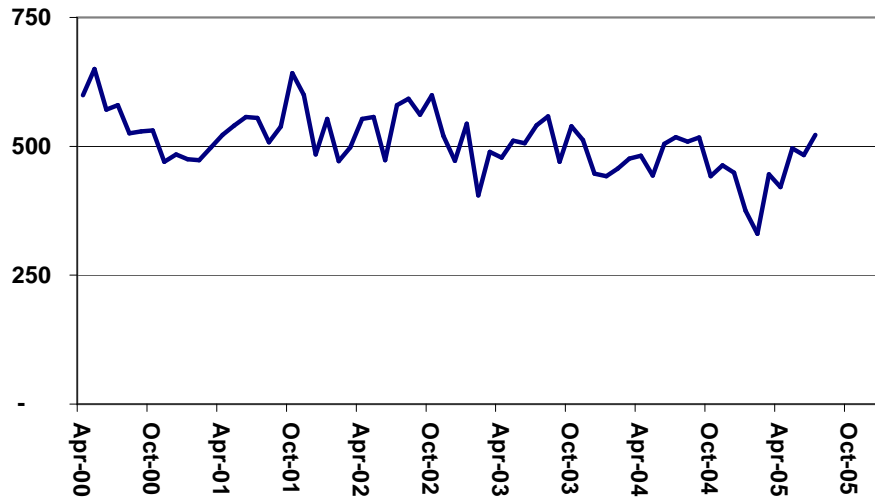
**Lambeth - Fraud or Forgery**



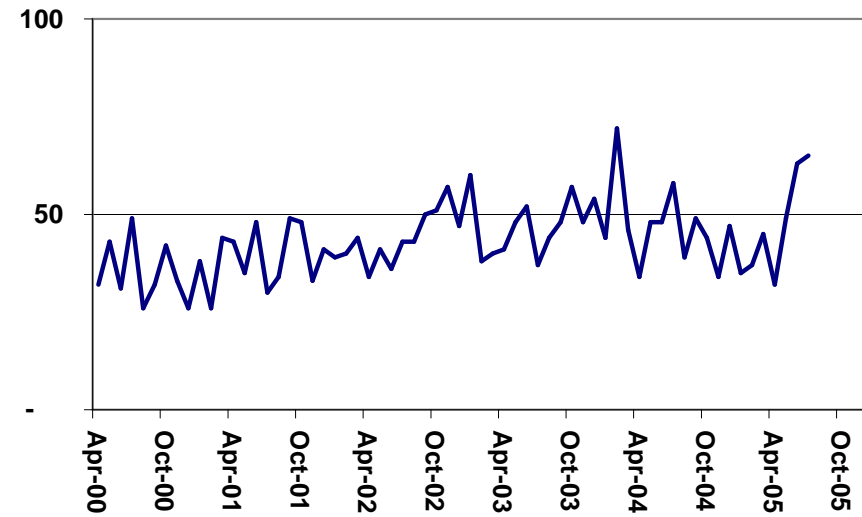
**Lambeth - Burglary**



Lambeth - Criminal Damage



Lambeth - Other Notifiable Offences



Source: MPS Crime Statistics Archive -[www.met.police.uk/crimestatistics/index.htm](http://www.met.police.uk/crimestatistics/index.htm); presentation CPCG