

Meetings and Events attended

The following meetings and events have been attended by Group Officers and/or members.

- Lambeth Labour Group Policy Seminar at Lambeth Town Hall on 21 September.
- Victor Brook's memorial service on 24 September.
- Latin Front meeting at the Oval 28 September.
- Two day 'Guns and Gangs' seminar organized by the Borough police
- Community Reference Group for the IPCC Investigation into the shooting of Jean Charles de Menezes
- Launch of Black History month at City Hall.

Forthcoming Events

- Herne hill Forum public meeting 7.00 p.m., Wednesday, 5 October at St John's Hall, Heron Road by Milkwood Open Space. Details - www.hernehillforum.blogspot.com
- Brixton Area Forum public meeting, 7:00pm, Assembly Hall, Lambeth Town Hall.
- Lambeth C-PCG – AGM, 6.00 p.m. on Tuesday, 18 October, at the Assembly Hall, Lambeth Town Hall.

Working Groups

The Mental Health Sub-group report has received coverage in the local press and a number of requests for copies and downloads from the website. The Sub-Group is now considering its next steps. If you have particular concerns, please contact Anna Tapsell through the Group Office.

The Stop and Search Sub-Group are compiling their report for production in mid-autumn.

Policing Cannabis: Survey

A research team at Kings College London are conducting an on-line survey of public knowledge and attitudes around policing cannabis. The survey can be completed at:

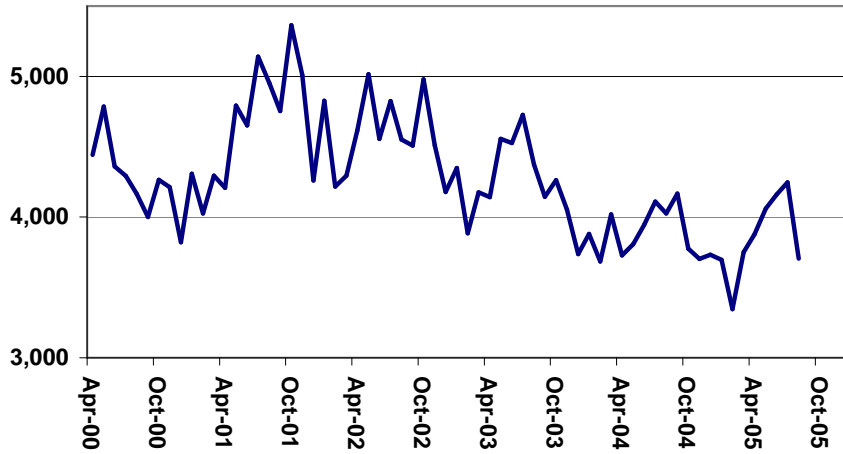
<http://www.policingcannabis.co.uk/>

Funding

Below is a brief summary of our financial position as at 1 September. The phasing of spending to date follows the pattern of previous years. Figures exclude salary costs.

Cash in Hand and at Bank, 31 March 2005	£4,082
Expenditure 1 April 2005 to 31 August 2005	£4,696
Income (MPA Grant)	£31,522
Net Funds at 16 November 2004	£30,908
<i>Anticipate Spending to Year End</i>	
Routine (meetings, office costs etc)	£10,700
Communications, promotion, capacity building	£8,000
Provision for New Initiatives	£6,000
Total Anticipated Spending to the Year End	£24,700
Forecast Year End Reserves	£6,208

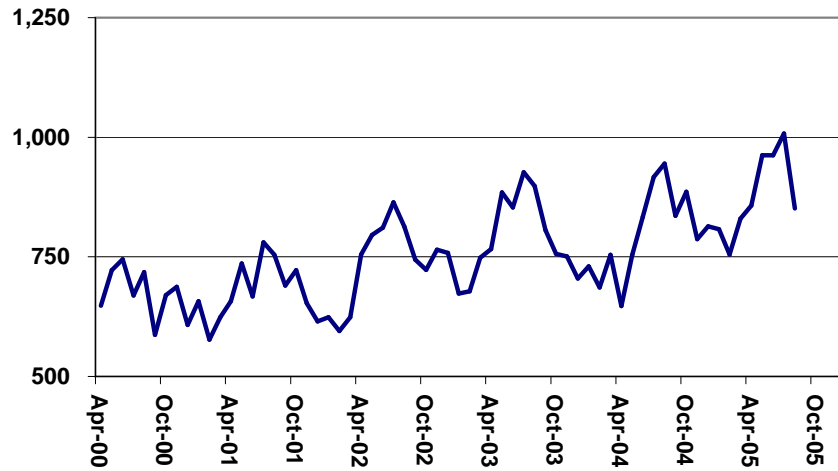
Lambeth - Total Notifiable Offences



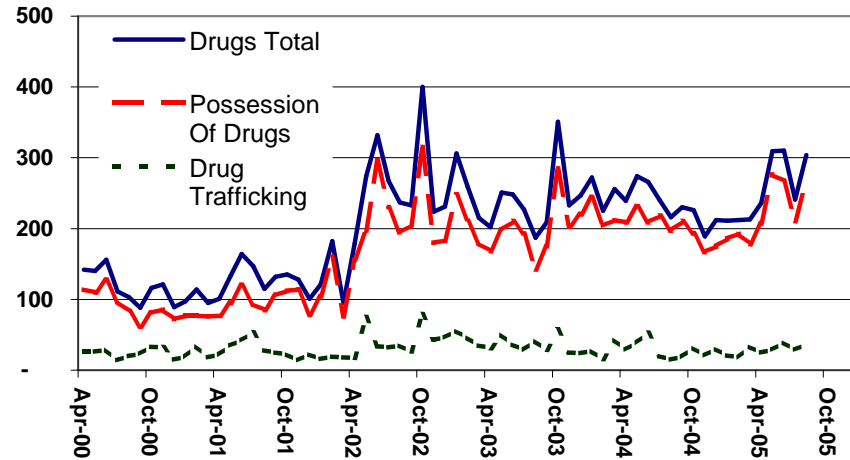
Lambeth - Street Crime (Personal Robbery plus Snatches)



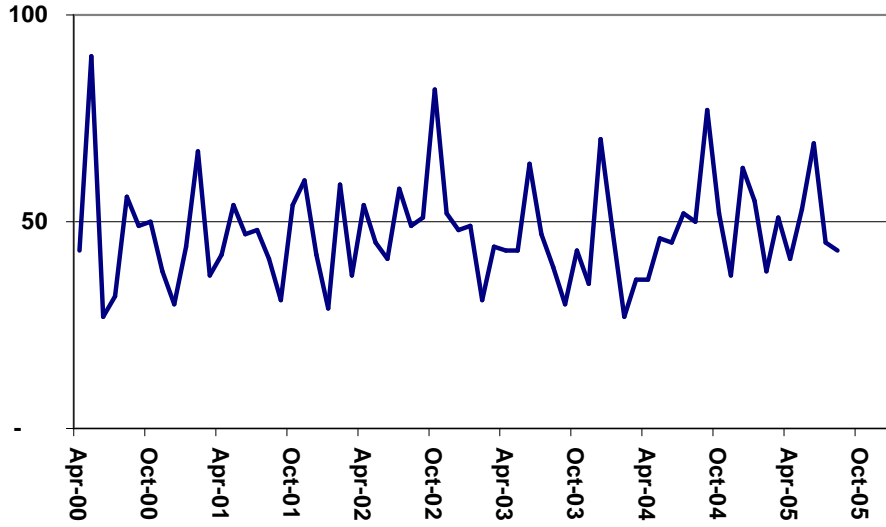
Lambeth - Violence Against the Person



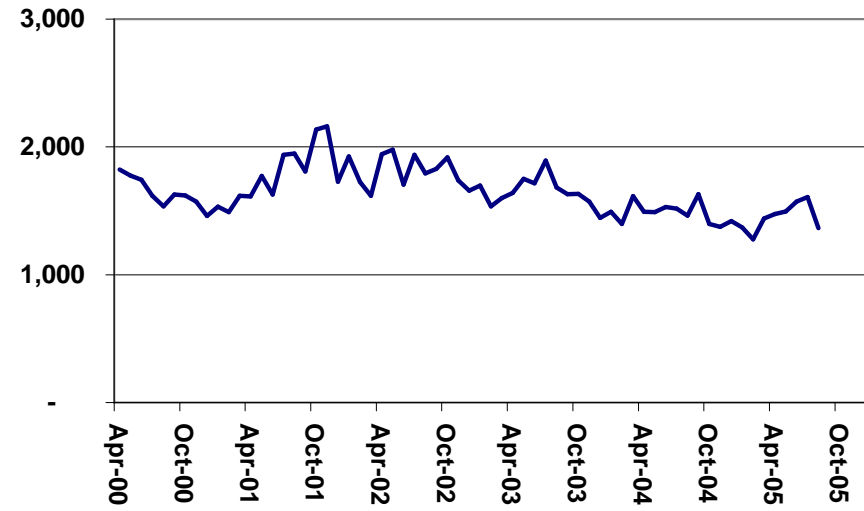
Lambeth - Drug Crime



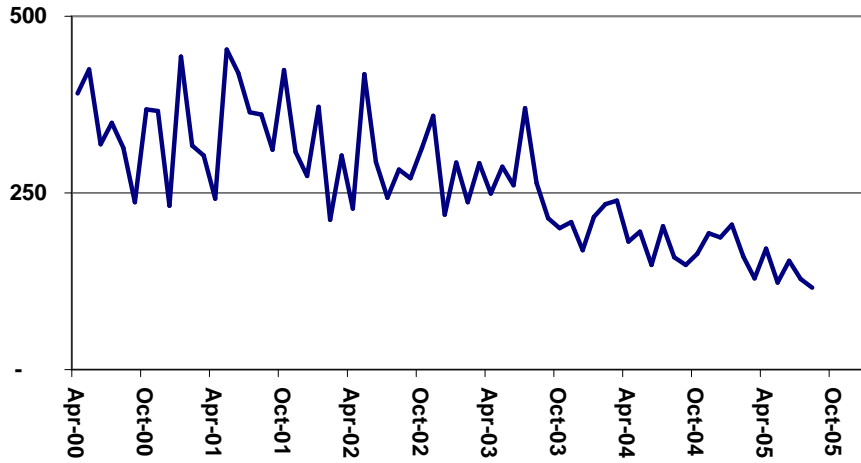
Lambeth - Sex Offences



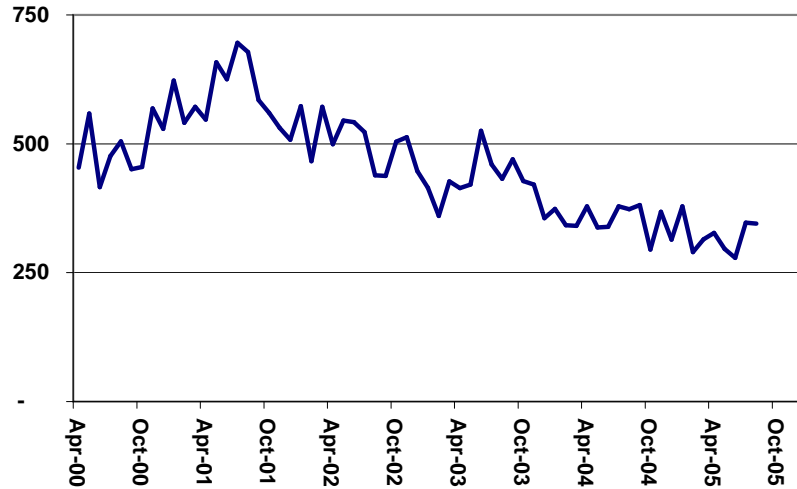
Lambeth - Theft and Handling



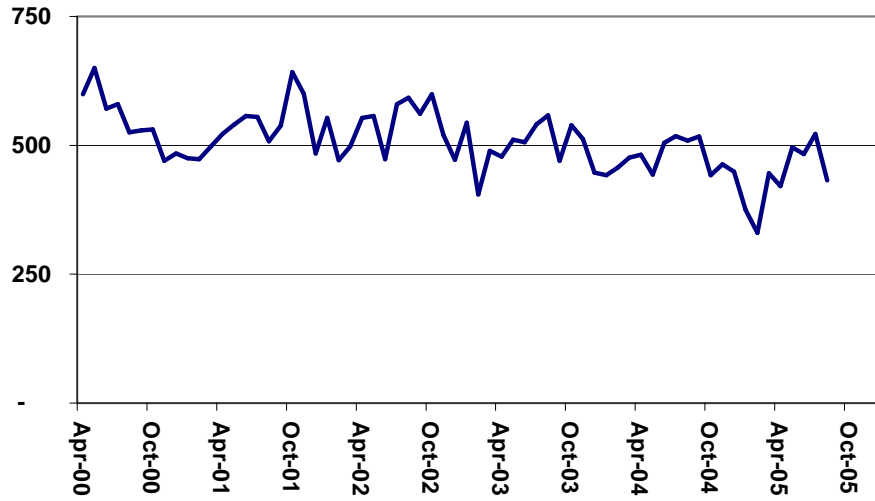
Lambeth - Fraud or Forgery



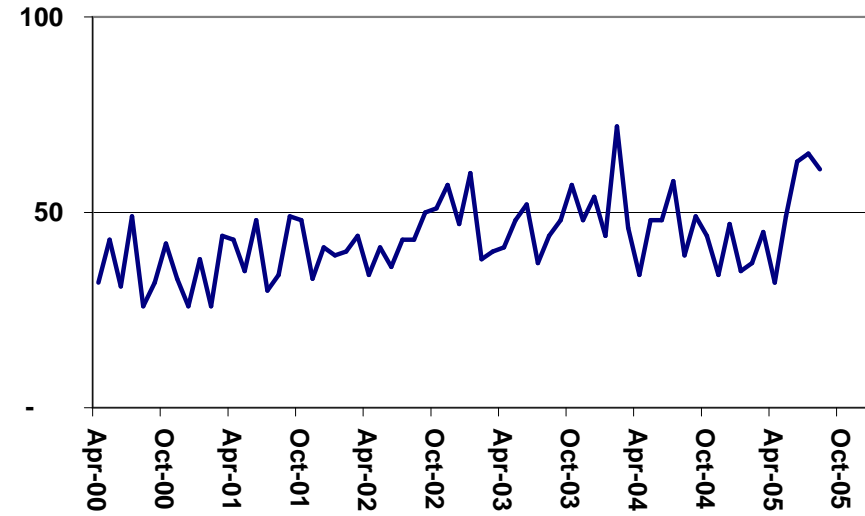
Lambeth - Burglary



Lambeth - Criminal Damage



Lambeth - Other Notifiable Offences



Source: MPS Crime Statistics Archive - www.met.police.uk/crimestatistics/index.htm; presentation CPCG