

Annual Report

2009/0

Contents

| | Page |
|---|------|
| Chair's Report | 2 |
| Honorary Comptroller's Report..... | 6 |
| View from a Safer Neighbourhood | 24 |
| Chair of Independent Custody Visitors Report..... | 25 |
| Appendix: Membership..... | 30 |

Chair's Report

2009/2010 seems a very long time ago. So much has happened since July the end of CPCG's operating year, it is difficult to believe that 2009/10 was an effective and important year in the development of Lambeth CPCG. When I became chairperson in 2006 we were in continuing difficulty with our funding agency, the MPA. Our meetings were renowned not for their effectiveness but for the unpleasantness and insularity of our public debates and for an all-pervading misogyny that coloured our deliberations.

If that seems unduly harsh I can tell you that it took the best part of a year to persuade the MPA lift recurrent restrictions on our funding.

By the beginning of 2009 we were generally regarded as an example to others in effectiveness and value for money:

Best Practice

A comparison with Lambeth Borough and its CPEG highlighted that Lambeth has a far more strategically focussed meeting with a greater input from a more diverse group of people and organisations. Also, Pan-London MPS teams are regular attendees – the Territorial Support Group (TSG) and Firearms OCU (CO19) attend their meetings and give regular updates to the public on their operations held in their borough.

Source: MPS Westminster

By 2009 we were awarded the maximum MPA funding for CEGs, having not only improved the shape and content of our monthly public meetings but also successfully pitched our Indian tent at Lambeth Country Show, actively participated in the borough's Expos and Peace Week and produced a regular newsletter and website. More importantly, the local debate we had started with our report on the interaction between the mentally ill and the police was brought to prominence once more following the tragic death in custody of Sean Rigg. Thanks to George Marshman, Assistant Director of Adult Services Head of Community Safety, money was found in 2009 to prioritise this issue and recommendations will shortly be presented to our CPCG whose implementation will result in a major change to the way in which people who may be

mentally disordered are cared for whilst in police custody. There is no doubt that this Lambeth pilot will have impact across greater London and beyond.

Lambeth CPCG along with Lambeth's Independent Custody Visitors remains focused on the rights of vulnerable people who are the subject of police action or are in police custody or prison. In Lambeth the dis-proportionality of young black men to others who are detained in youth offending institutions or prison continues to rise, as does the number of black men who are Sectioned to be detained under the Mental Health Act.

The death of Sean Rigg in August 2008 remains unaccounted for and the criticism of the Independent Police Complaints Commission whose full report must await the Inquest, was forcibly expressed to it's chairman, Nick Hardwick, at a special CPCG meeting in May of 2009. The relatives of those who have died whilst in contact with the police gathered again in August this year. These included the relatives of Blair Peach, Brian Douglas and Ricky Bishop as well as those of Jean Charles de Menezes and Ian Tomlinson. This moving event was organised by Merci and Samantha Rigg and held at the Karibu Centre. Sean Riggs family must wait until 2012 for an Inquest. We learn now that the Coalition Government has decided to ditch the appointment of a Chief Coroner whose main task was to sort out and improve the poor Inquest system with its huge delays.

Also, in 2009, we commissioned Catriona Robertson to research and report into how well or otherwise local people are engaged with the community safety process. Her report 'Whose Shout', published early in 2010 has been widely welcomed and its recommendations will be considered at a conference we will be organising later this year. The recommendations are challenging for our CPCG as they are for the Partnership but we have long recognised that we need to be far more innovative, imaginative and inclusive in achieving our objectives.

One way in which we have tried to be more innovative has been to develop a plan to introduce mediation into the way in which we can support those who feel aggrieved

Annual Report 2009/0

towards the police. Together with our colleagues in Lambeth Mediation Service we presented our local police and the IPCC with a costed plan to pilot this service. Whilst the IPCC and the Police Federation showed support for this idea, as did the past and present Borough Commander, we have not entirely satisfied the MPS's legal advisers. Although by the beginning of 2010 we were close to agreement, the means to finance the pilot is now problematic. Nevertheless, we remain committed to offer mediation where appropriate on a professional if voluntary basis.

Throughout 2009/10 we continued to play our part in the Safer Lambeth Partnership and on the pan-London forums of Stop and Search and London Communities Police Partnership (an umbrella body for London wide CPCGs), where Jim Toohill is now a Board member. Our Board Members have been active at all levels of community life here in Lambeth as well as attending events and meetings that arise on a weekly basis about issues of crime and disorder, whether acting as independent police observers or advising at Gold Groups following serious incidents or holding private meetings for tenants and residents in 'hot spot' areas of the borough. Many of our Members are active in their local Safer Neighbourhood Panels and it is clear that our working relationship with the SNPs has grown and improved throughout the year.

In thanking the Board and Jim Toohill our Honorary Comptroller in particular, I could not end without a big thank you to Ben McKendrick who left us at the beginning of 2010 to fulfil his long-held ambition to travel the world. We miss him and wish him well.

Thank you to our Borough Commander Nick Ephgrave, who in my view is proving himself to be the most caring and also the most accessible of borough commanders and to his senior team of officers, uniformed and CID. Also, to the civilian staff of our local police service who have done sterling work here and who now face the bulk of the cuts throughout the MPS as do our colleagues within our local Council, many of whom have already received notice of redundancy. How the services to our most vulnerable people, the very young and the elderly, are affected will need to be a priority on our CPCG agenda in this coming year.

The optimism of 2009/10 seems a long way off indeed, but after more than twenty five years of existence, Lambeth CPCG will, I am sure, remain at the hub of our community life, however hard that gets.

On a personal level, I have found being Chairperson of Lambeth CPCG often frustrating, sometimes infuriating but always stimulating and I do believe it to be an honour. I am now looking forward to returning to my place as a voice from the back of the hall!

Anna Tapsell

In Memoriam

It is sad to record the deaths during the year of three stalwart members of CPCG – Greta Brookes, Wally Channon and Abdul Sultan Virani. All three were individuals who not only contributed hugely to the borough in their youth and vigour but maintained a close interest even into their frailty. They were all three sources of hard-earned wisdom and good friends to us all. We miss them.

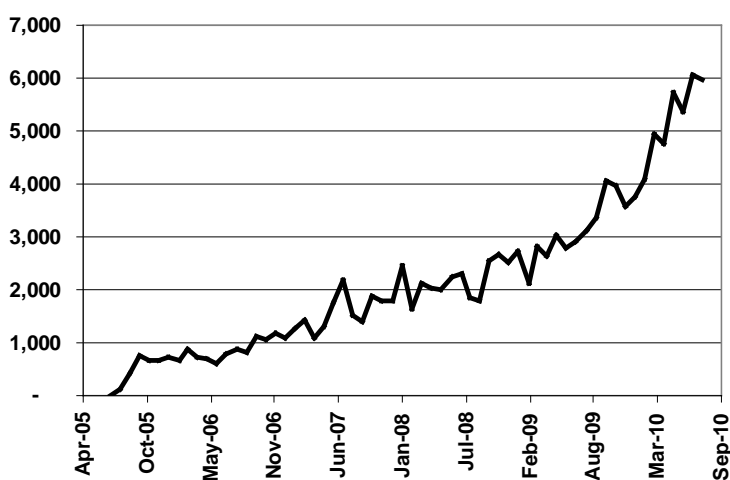
Honorary Comptroller's Report

CPCG has sustained its service to all those who live, work or study in Lambeth, providing them with access to key decision makers in the statutory agencies charged with making Lambeth a safer and fairer borough. CPCG has an open membership, to individuals and to community organisations, but its service goes wider. This emphasis on breadth of access is reflected in all our activities in the year – our monthly public meetings, our website and our outreach activities. Our commitment to broaden that access, including to newer and sometimes more marginalised communities within the borough, was evidenced in the year by our commissioning the *Whose Shout?* research project, funded by the Safer Lambeth Partnership (our local Crime and Disorder Reduction Partnership).

Website

The numbers of 'unique visitors' to our website continues to grow and this tool provides us with a platform from which to reach many people in the borough who have not the time or inclination to attend events.

UNIQUE VISITS TO CPCG WEBSITE EACH MONTH



A 'Unique Visit' is one where the visitor loads more than one page

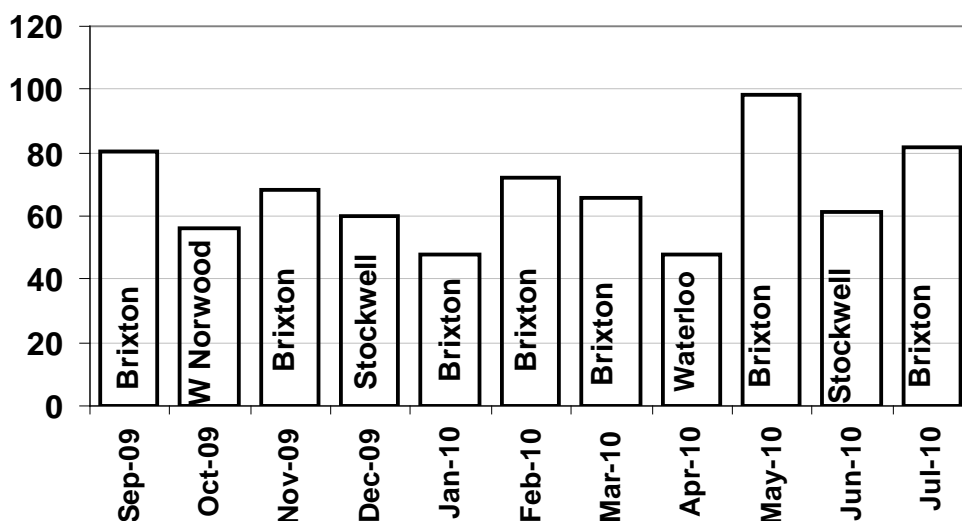
The Whose Shout? report, in particular, has given us clear indications of how we can develop this means of communication and information giving whilst demonstrating that for some groups (eg veiled Muslim women) the Internet is a preferred method for having their 'Shout'. Over 30 per cent of the website visits are to download documents (Police Reports, Minutes, Presentations and so on).

Monthly Public Meetings

For over twenty five years, our local police have been attending open-access, CPCG public meetings every month. In doing so they, and CPCG, have pre-dated, by twenty years or more, the current notions 'Engagement' and 'Facing the People'. Successive borough commanders and senior officers have attested the value they place on this form of local accountability. In recent years the forum has been extended to encompass the wider Safer Lambeth Partnership as well as specialist units within the MPS, whose activity in the borough can have considerable impact on public confidence.

Lambeth is now one of very few borough CPEGs (Community Police Engagement Groups) in London which holds meetings every month (except August) and where members of the public can attend and speak. Attendance continues to hold up and members of general public are well represented and are always given their say.

ATTENDANCE AT CPCG MONTHLY PUBLIC MEETINGS



| ATTENDANCE AT CPCG MONTHLY PUBLIC MEETINGS, 2009/0 | |
|---|-----|
| Individual Members | 22% |
| Representatives of Affiliated Community and Voluntary Groups | 25% |
| Elected Representatives, Police and Officials of the Safer Lambeth Partnership membership | 23% |
| Members of the Public | 30% |

The public meetings usually have a theme, in addition the customary monthly police report. These are shown in the table below (* indicates those specifically addressing Safer Lambeth Partnership Strategic Priorities).

| MONTH | THEME | PRESENTERS |
|--------------|---------------------------------------|---|
| Sept 09 | Young and Safer, SLP Youth Strategy * | Children and Young People, London Borough of Lambeth. |
| Oct 09 | | |
| Nov 09 | Sexual Violence against Women * | MPS: Lambeth Sapphire, Lambeth Women's Aid, Reach and Mosaic Projects, TRUST Project, Asha, LBL |
| Dec 09 | Operation Trident | MPS: Trident, Trident IAG |
| Jan 10 | Custody Visitors | Lambeth ICVs |
| Feb 10 | Business Crime | MPS: Lambeth |

| MONTH | THEME | PRESENTERS |
|--------|-------------------------------|---|
| Mar 10 | London Criminal Justice Board | LCJB |
| Apr 10 | Custody Suites | MPS: Lambeth |
| May 10 | Drug and Alcohol Strategy* | NHS Lambeth and Service Users |
| Jun 10 | Public Opinion Surveys | MPS: Lambeth and London Borough of Lambeth |
| Jul 10 | Engagement and Schools * | MPS: CO19, MPS: Lambeth, Lambeth Summer Projects Trust. |

It is not the purpose of this report to rehash the minutes of those meetings: they are readily available on-line or on request from the Group's office. But a review of those minutes points up the value of these monthly events in a number of respects.

Open Access – The open access character of the meetings means that the community concerns raised, and acted on, are not restricted to those presented. The 'Wordle' diagram below shows those topics raised over the period more than 10 times; the size of each topic is proportionate to the number of occasions.

Mimi Asher, which caters for a large number of young people, some of whom have found their way back from criminal activity through the group. It has been acknowledged to have a positive impact on the levels on criminality on the estate. The church group attended CPCG's September 2009 public meeting, in substantial numbers, because in late August a Blunt 2 Operation had apprehended young people leaving a Bible study session and Stopped and Searched them *en masse*. Pastor Mimi had been given to believe that the operation was specifically targetted at the church group.

As well raising issues about the co-ordination between off-borough units, whose activities can easily damage local confidence in the police, the young people attending attested to both the positive work which the church group was undertaking but also the woefully inadequate resources it had for doing so.

A trawl through the subsequent Minutes, demonstrates the growing coalition within the Safer Lambeth Partnership (the Police, Lambeth Council and CPCG), local Councillors, the local Safer Neighbourhood Team to address the issue and the hard work undertaken to secure a premises close to estate (sadly, the post-code identity of local gangs means that young people are reluctant to venture from their own areas). At the September 2010 CPCG meeting, the Assistant Director for Community Safety was able to tell us that a start-up grant had been arranged for the group (to help with charity registration) and a lease on a suitable premises secured.

This case study points to three important aspects of our monthly public meetings:

There is no other public forum where the church group could have gained access to senior decision makers and gained the support of the wider community in doing so;

The progress of efforts to resolve a problem which had real impact on the lives of the young people involved, and also of the wider community, was open and transparent.

They were not alone.

Annual Report 2009/0

A group of young people, some of whom had taken wrong turnings in the past, learned that the 'system' can work for them and that they can get support from the statutory agencies (whose job it is to serve them) and also from their local community.

Responsiveness – The origins of Community-Police Police Consultative Groups lay in the Scarman Inquiry into the events in Brixton in 1981 and the identification of the need for a means to avoid polarisation between the local community and the police and to address flashpoints quickly when they arise.



Things have moved on a lot in the intervening years, thanks to the commitment of local police and the local community. But every year, circumstances arise when local people need access, in quick time, when their concerns can be addressed. Two such occurred in 2009/0.

In late October 2009, an ill-judged press release from CO19 (the MPS firearms unit), followed by an interview given by a CO19 officer on local television news, gave local people to believe that armed foot patrols of estates in Lambeth would become routine. There was considerable concern expressed to CPCGs office, from local people but also

from some working within the criminal justice system. The November public meeting of CPCG was extended and arrangements made for a senior officer to explain what was really planned, something somewhat removed from 'routine' patrols. This assurance was repeated to Lambeth's MPA Link member, by the Sir Paul Stephenson (MPS Commissioner) at a subsequent meeting of the Metropolitan Police Authority.

In June 2010, the monthly public meeting heard of the events in West Norwood in the preceding week where a young man attending the wake of a murdered teenager was allegedly repeatedly TASERed, whilst under restraint, by CO19 officers. There were also concerns over subsequent medical attention. This incident followed on other concerning uses of TASER in the borough.

Chief Superintendent Andy Tarrant of CO19 (who now attend our meetings routinely – see Engagement Hub below) gave a general explanation of the use of TASER (the particular case was by that point *sub judice*) but more importantly undertook to follow through with a report back to a CPCG public meeting of the eventual outcome of the case, something CPCG shall hold him to. At the July 2010 meeting the Chair of a local Safer Neighbourhood panel asked, on the back of this case, for details of the ethnic breakdown of subjects of TASER. This was reported back to our October 2010 meeting and raised concerns which CPCG is pursuing with the MPA.

An Engagement Hub - At the outset, CPCG addressed the relationship between the police and community. Over the years the need to take a wider approach to engagement around community safety has become all too apparent. Meanwhile other vehicles for engagement with the agencies responsible for our safety have come on the scene. The plethora of routes into engagement, and the frustration that can cause, has been documented by the Whose Shout? Report.

In response, CPCG has developed to become a hub for local engagement around community safety in a number of ways.

The Safer Lambeth Partnership

Senior officers from the Borough of Lambeth's Community Safety Division now regularly attend our monthly public meetings and, with the borough MPS commander, report on

Annual Report 2009/0

progress, take actions and report back. Other players in the Partnership also engage with the local community through CPCG. The May 2009 public meeting was given over largely to a presentation and discussion of the Partnerships Drugs and Alcohol Strategy, led by NHS Lambeth, the local Primary Care Trust.

Meanwhile our Chair is a co-optee of the Partnership's Executive Board and CPCG provides a public forum for the Partnership to consult on its strategic priorities at each year's refresh.

MPS Specialist Units

The activities of MPS specialist units, such as CO19 or TSG, can be high profile and, if conducted without an awareness of and sensitivity to local circumstances, can be damaging to public confidence in the police. Equally, these units do not have the same access to public forums as our local police and lack the opportunity to explain their ways of operating, and the reasons for them, and to build up confidence.

Both CO19 and TSG are now regular attendees at our public meetings, with a slot to report on their activity in the borough over the month but also to respond particular events, such as the TASERing incident above. They are also able to explain some of their pro-active work such as the impressive account of CO19's Youth Engagement initiatives, discouraging young people from guns and gangs, given at our July 2010 public meeting.

Other specialist units have access to CPCG on an as needed basis, for example the presentation from Trident to our December 2009 meeting.

Safer Neighbourhood Panels

Some London boroughs CPEGs have a very formalised, structural relationship with ward based Safer Neighbourhood Panels. In Lambeth, the relationship has grown more organically. The first borough wide meeting of Safer Neighbourhood Chairs was organised by CPCG in 2007 and thereafter CPCG has been in regular contact with Panel members through our mailing list.

Increasingly we have an attendance of Safer Neighbourhood Panel members and Chairs (a number of whom are also CPCG members) at our monthly public meetings. The issues they bring are often ones which are unlikely to be resolvable by their local Safer Neighbourhood Team, for example

- The period of tenure of officers on Safer Neighbourhood Teams;
- Ensuring that pan-borough police officers (response teams, CID and so on) are aware of Safer Neighbourhood Priorities when they find themselves working in a particular ward;
- Working with schools at ward level;
- The cover of Community Safety Co-ordinators (from the Council);
- The accessibility of Safer Neighbourhood Team bases;
- Deployments of Safer Neighbourhood Team officers elsewhere in the borough;
- Succession issues in a local Panel.

Independent Custody Visitors

CPCG has a long history of association with the Lambeth Panel of Independent Custody Visitors. The ongoing concern about the need to ensure that this group is properly supported to do its job, and more generally about the circumstances of detainees in custody, is attested by the commitment of two of our monthly public meetings to custody issues (following the HMIC report into custody in Lambeth in 2009) and the situation of the Custody visitors. CPCG has made representations to the MPA concerning the 'one size fits all' model that has been applied to borough ICV Panels across London and expressed concerns that this will limit the effectiveness of our Panel in Lambeth.

CPCG's relationship with the ICVs enriches our, and the public's, knowledge of the issues and of the risks, both to detainees and to the police, that inadequate provision (especially for people with mental illness) can cause.

Working Groups

Our working groups provide the means for local people to work with the police, and other members of the Safer Lambeth Partnership, to address (in greater depth than can be achieved at a public meeting) ongoing problems and hopefully generate solutions.

Mental Health Working Group – This Group was originally formed to make a submission to the MPA-NHS Joint Review of Policing and Mental Health in 2005. Following the death of Sean Rigg, the publication of the Bradley Report¹ and of the IPCC's report² the group formed the nucleus of a wider group comprising the MPS, the Borough of Lambeth Community Safety, NHS Lambeth and the South London and Maudsley NHS Foundation Mental Health Trust.

Consultants engaged by this group have recently produced their report on the back of whose recommendations a £1m bid for funding (to the Guys and St Thomas' Charitable Trust) for an innovative project is in preparation. The report will be presented to a CPCG public meeting later in the year.

Stop and Search – Lambeth's Stop and Search Monitoring Group was the first in London and provided the model for what is now a network of such groups across the capital. During 2009/0 the group made less impressive progress than it has in the past, due to changes in personnel and to changes in personal commitments, but has now re-established itself. With the help of local police officers, issues of data integrity have come to light which we are pursuing both locally but also as an issue of governance with the MPA.

Outreach

The loss of our Administrator during the year made it impractical to support our marquee at the Lambeth Country Show, which we had attended for five years in succession.

¹ The Bradley Report - DoH (2005)

² Police Custody as a 'Place of Safety' – IPCC Research and Statistic Series, Paper 11

We have however been able to attend other smaller events, an example of which was the Stockwell Expo in the autumn of 2009. These events provide an excellent opportunity for CPCG to meet with people who don't normally attend meetings and to hear their concerns. As a direct consequence of our attendance at Stockwell, and what we learned of the circumstances on Stockwell Gardens Estate, we were able to organise and facilitate a closed meeting for the residents on the estate (who are sometimes fearful of speaking in public about crime) with the police, the Borough of Lambeth and the social housing landlord, and to help them to draw up an Action Plan to begin to address their concerns.

A very different form of 'outreach' has been our regular attendances at MPS Lambeth's 'Recruitment Fairs' where new recruits to the borough are able to meet representatives from local organisations, in a process somewhat akin to 'speed dating', to learn something of the borough they will soon be policing.

Resources

Lambeth CPCG has a growing membership base and a growing mailing list, the latter the life-blood of any community organisation. Here are some facts and figures.

| Membership | Number | White:BME* | Female: Male | Faith |
|---------------------------------------|--------|-------------------------------|---------------------------|---------------|
| Individual | 36 | 19:17 | 18:18 | - |
| Community and Voluntary Organisations | 36 | 4 specifically for BME groups | 1 organisation women only | 5 faith based |
| Statutory Organisations | 7 | - | - | |
| Mailing List | 840 | | | |

* Includes Latin American people

This membership base, and contact within the community, not only provides a broad range of perspectives of community safety and policing in Lambeth, but also is the basis of the voluntary effort invested in CPCG each year. Using the methodology of the MPA's recent Value for Money Review we estimate this to be of a value of over £15,000 pa (rather more with the current vacancy of our administrator).

Much of that effort comes from our Board, details of which are given below.

| Board Member | AGM Last Elected | AGM Term Ends | Expenses Claimed 2009/0 |
|---------------------------|------------------|---------------|-------------------------|
| Doye Akinlade | 2008 | 2010 | NIL |
| Paul Andell | 2009 | 2011 | NIL |
| Canon Ivelaw Bowman | 2008 | 2010 | NIL |
| Shane Collins | 2008 | 2010 | NIL |
| Gill Kennealy | 2008 | 2010 | NIL |
| Sandra Moodie | 2008 | 2010 | NIL |
| Ros Munday | 2008 | 2010 | NIL |
| Anna Tapsell | 2009 | 2011 | NIL |
| Jim Toohill | 2009 | 2011 | NIL |
| Wesley Walters-Stephenson | 2009 | 2011 | NIL |
| Jane Warwick | 2009 | 2011 | NIL |

With this resource, and our funding from the MPA (see below) we have been recognised as providing best practice at low cost. An internal report (published under the MPS's Freedom of Information Scheme) described Lambeth CPCG as best practice

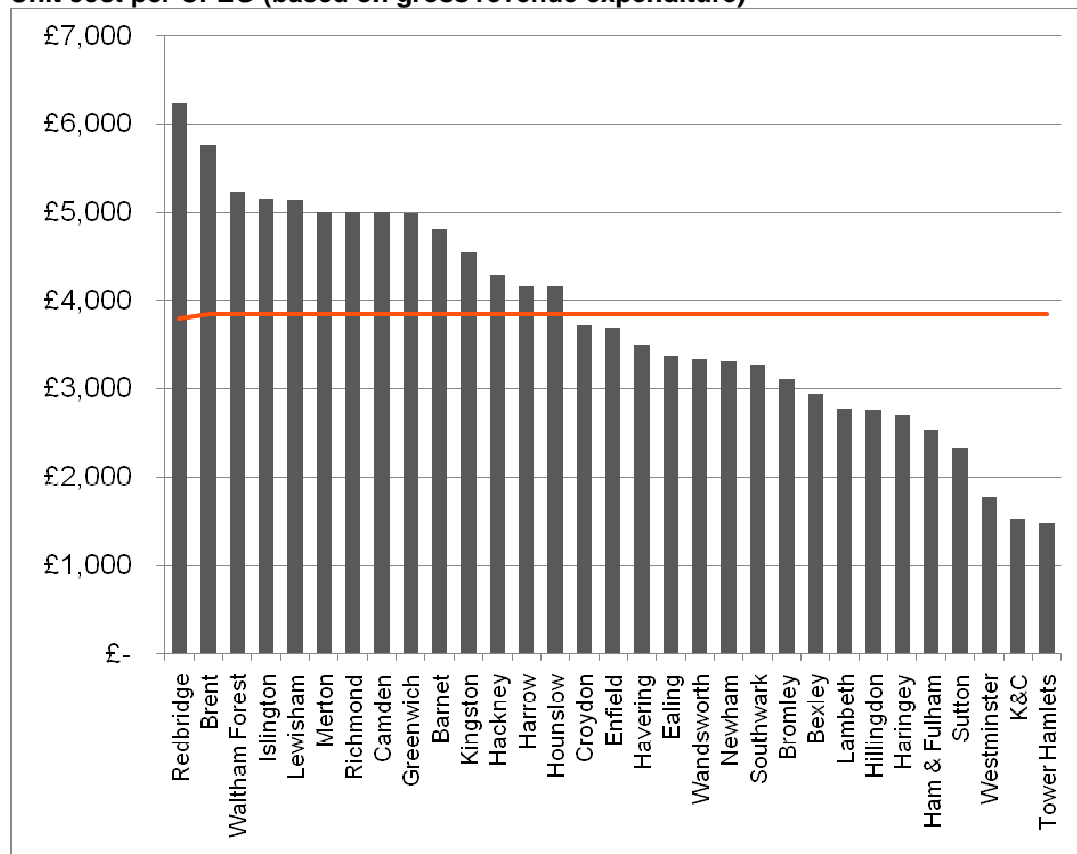
Best Practice

“A comparison with Lambeth Borough and its CPEG highlighted that Lambeth has a far more strategically focussed meeting with a greater input from a more diverse group of people and organisations. Also, Pan-London MPS teams are regular attendees – the Territorial Support Group (TSG) and Firearms OCU (CO19) attend their meetings and give regular updates to the public on their operations held in their borough.”

Source: MPS Westminster

The MPAs Value for Money Review of CPEGs showed Lambeth to be in the least expensive 25 per cent of CPEGs across London, measured in terms of cost relative to output.

Unit cost per CPEG (based on gross revenue expenditure)



Source: MPA

Finance

CPCGs formal company accounts are given separately for approval at the AGM. On subsequent pages are the accounts presented in the more familiar format.

The story from the Accounts is the now familiar one. In 2009/0, after allowing for the exceptional one-off cost of the Whose Shout? Research (funded from a grant in the previous year from the Safer Lambeth Partnership), we again see that we ran an underlying deficit of around £3k, bringing our cash reserves to just under £11k, or £1k short of our reserves policy.

This has been an ongoing weakness, with our ‘business as usual’ costs (although pared to the core) exceeding our funding by around £4k.

The departure of our Administrator has, in itself, allowed us to restructure the post and bring our core costs into line with our funding, going forward.

However, our AGM is being held just the day before the announcement of the results of the Government's Comprehensive Spending Review and there are expectations of severe cuts. At the same time, there is talk within the MPA of a 'restructuring' of Engagement; the Value for Money Review is in part a preparation for that. Our new found financial stability is therefore likely to be short lived.

In the medium term, there are much greater uncertainties regarding the future of borough based Engagement, based on expectations of a Policing Bill in November/December this year following the Government's White Paper in June. The White Paper was not especially informative in respect of London, other than to state that the MPA would disappear in 2012 and that 'discussions were underway'. There is an expectation that the preferred model is a commercial style Board, of Executive and appointed non-Executive Directors to provide governance for the MPS, whilst the scrutiny function would go to the Greater London Assembly. There is no clear view of where Engagement would lie.

Earlier in the year we lost Ben McKendrick, our Administrator of 18 years, to the call of the open road. Ben was always an unflappable and uncomplaining worker, a readily accessible memory bank of the Group's activities and a good natured soul of discretion. We all miss him.

At this year's AGM, we shall be losing our Chair of the last four years, Anna Tapsell, as our Constitution requires. Doubtless there will be appropriate tributes to Anna at the AGM but having worked closely with Anna over that period, I would like to record my personal appreciation of her hard work, resilience, wisdom and unquenchable sense of humour.

Jim Toohill

Honorary Comptroller.

Annual Accounts 2009/0

| Expenditure | | 2009/0 | 2008/9 |
|--------------------|---------------------------------------|---------------|---------------|
| <i>Notes</i> | | £ | £ |
| | Salary Costs | 35,564 | 36,928 |
| | Travel | | 4 |
| | Telephone, Fax and Broadband | 1,236 | 1,298 |
| 1 | Room Hire | 1,469 | 1,317 |
| | Rent | 9,376 | 9,662 |
| | Refreshments | 2,016 | 1,878 |
| | Professional Services | 1,275 | 1,097 |
| | Postage & Printing | 816 | 793 |
| | Office Supplies | 786 | 679 |
| | Cleaning | - | 194 |
| | Office Equipment | 118 | 52 |
| 2 | Depreciation on tangible fixed assets | 1,228 | 1,112 |
| | Engagement Project - Whose Shout? | 8,797 | |
| | <i>Total Non-Salary Costs</i> | 27,117 | 18,085 |
| | | 62,680 | 55,012 |

| Income | | 2009/0 | 2008/9 |
|---------------|--|-----------------|---------------|
| <i>Notes</i> | | £ | £ |
| | MPA - Grant | 50,000 | 50,000 |
| | Safer Lambeth Partnership | | 10,000 |
| | LPICV (Copying, Room Hire etc) | | 510 |
| 3 | MPS - Contribution to Refreshments | 750 | 660 |
| 4 | Other | 80 | |
| | <i>Written Off Creditor (NACRO)</i> | | 2,000 |
| | | 50,830 | 63,170 |
| | Net (Deficit) Movement in Funds | (11,850) | 8,158 |

Balance Sheet Movements

| | |
|------------------------------------|---------|
| | £ |
| Cash in hand and at Bank 31/3/2009 | 25,193 |
| Debtors at 31/3/2009 | |
| Creditors at 31/3/2009 | (3,316) |
| Tangible Fixed Assets at 31/3/2009 | 2,223 |

| | |
|----------------------------------|---------------|
| Total Assets at 31/3/2009 | 24,100 |
|----------------------------------|---------------|

| | |
|---------------------------------|----------|
| Movement on Total Assets 2009/0 | (11,850) |
|---------------------------------|----------|

| | |
|----------------------------------|---------------|
| Total Assets at 31/3/2010 | 12,250 |
|----------------------------------|---------------|

Balance Sheet at 31 March 2010

| | |
|--------------------------------------|--------|
| | £ |
| <i>Current Assets</i> | |
| Cash in Hand and at Bank | 10,233 |
| <i>Debtors</i> | |
| MPS: Contribution to Refreshments | 400 |
| VAT Reduction on Rent | 182 |
| Pre-payment 1 Month's Business Rates | 91 |

| | |
|----------------------------|--|
| <i>Current Liabilities</i> | |
| Creditors | |

| | |
|-------------------------------|---------------|
| Net Funds at 31/3/2010 | 10,906 |
|-------------------------------|---------------|

| | |
|---------------------|-------|
| <i>Fixed Assets</i> | |
| Tangible Assets | 1,344 |

| | |
|----------------------------------|---------------|
| Total Assets at 31/3/2010 | 12,250 |
|----------------------------------|---------------|

Notes

- 1 Room Hire includes Marquee at the 2009 Country Show and pitch at 2009 Brixton
- 2 Tangible fixed assets are a photocopier and a printer
- 3 MPS contribute £550 pa to the cost of providing refreshments at meetings. The apparent rise in contribution is due to catching up on earlier payments
- 4 Other income is from hiring out CPCG office for an afternoon

View from a Safer Neighbourhood

My safer Neighbourhood panel, Clapham Town Ward was the first Safer Neighbourhood panel to be set up five years ago. In that time we have had three sergeants and have seen huge improvements in Community safety in our ward.

We have problem setting groups that work with different agencies as required including statutory bodies, the police and the local community. These groups then report back to the panel. This is a way of working that has proved very successful for us and we have achieved results by concentrating on targets set through concerns raised at the panel.

On a personal level, I represent Safer Neighbourhood panels on the Safer Lambeth Partnership along with Ben Everitt who is also a chair of a panel in Streatham, we take it in turns to attend meetings. It is important that panels are represented at this level as we are an essential part of Community Safety in Lambeth, we have grown to 21 panels Borough wide representing every ward. In our panels we have a great deal of experience, commitment and local knowledge to offer.

Relations with the police are excellent with the Borough Commander and Chief Inspector Pat Beynon (who oversees the Safer Neighbourhood initiative) being very supportive and communicating with the panels regularly. We have had two meetings of all panel chairs and sergeants which have proved very useful. Local ward panel chairs are also meeting in smaller groups to exchange ideas etc...

The commitment by the panels to this initiative in Lambeth continues to be unequalled in the London area and hopefully with the implementation of project Hannah which will see the rapid response teams working in a more localised way we can look forward to a larger police presence in the Borough. One of the complaints on the ground has always been the size of teams which has been small so we are glad that this has been addressed in a positive way.

The panels also have the opportunity to be members of the CPCG and a place on our Board is available.

Safer Neighbourhood's have proved to be a great success in Lambeth and we can only build on it and make it stronger.

Ros Munday

Chair, Clapham Town Ward SN and CPCG Board Member

Chair of Independent Custody Visitors Report

The past year was both interesting and challenging for the Lambeth Independent Custody Visitors Panel.

We always aim to visit each of the custody suites in Lambeth once a week and I thank my Panel members for their commitment to custody visiting and commend them for their voluntary work, making visits at varied hours, often after a hard days work and during weekends.

The Panel is still below maximum capacity with a membership of 15 and we will continue to try to recruit new members as we are still short of our ideal number of 24 volunteers. As we continue to develop and grow in the following year, we will be placed in a better position to deliver to our community the vital reassurance that independent checks on the welfare of those in police custody are being carried out.

Although most of our reports have not raised any significant issues the panel has expressed their frustration that some police officers were not aware of the role ICVs play in the custody suite. Occasionally immediate, unannounced entry to the custody areas was a particular problem at the front desk of the three Lambeth stations, Brixton, Streatham and Kennington.

During the past year, every five weeks or so, at Gipsy Hill Police Station, I have continued to address newly appointed police recruits on the role of independent custody

Annual Report 2009/0

visiting and include the history of how the scheme came into being following the Brixton disorders and the Scarman Report in 1982. I had planned to train the more experienced members of the Lambeth Panel who were interested in taking part in this scheme.

Unfortunately, the financial cuts that the Government are due to implement will result in a halt in the recruitment of police officers. Therefore the last session of my introductory scheme will be in November 2010. This will be a sad loss as the recruits and senior Lambeth Police Officers found the information sessions of great value. I often came across some of the newly appointed police officers when I was making custody visits and they told me that the information sessions were of great assistance in understanding the complexity of the role of the many people that they met in the custody areas.

I am very disappointed that despite the many reports made during our visits to the three Lambeth stations, it became apparent that washes / showers were not always offered to the detainees who were not aware that they must ask for a shower or wash if not offered. This is especially relevant if the detainee is held overnight and often even longer in the case of immigration detainees. The police have placed notices in the cell areas saying that wash/showers should be requested if wanted, but at the time of detention detainees are not usually aware of written notices when being put into a cell. The Panel understands the extreme pressure that Custody Officers are often placed under and that an officer is not always available to take a detainee to the shower. This is especially relevant when there is not a female officer present for female detainees. Unlike Brixton and Kennington stations, Streatham does not have shower facilities but a sink in the corridor, which is in view of the CCTV. The Borough Commander Nick Ephgrave is trying his utmost to get a shower installed at Streatham and at present a site has been located, but, the finances are difficult to find. I sincerely thank him for taking on this difficult problem.

In 2010 the Panel will continue to monitor the provision of washes in all of the Lambeth custody suites.

Detainees suffering with mental health issues are especially vulnerable when in detention. On many occasions I and other Panel members have witnessed detainees in various stages of distress whilst awaiting a doctor's assessment, a social worker or transfer to a hospital. At times it has been necessary to have a police officer (and on some occasions two officers) on "constant watch" in the open cell doorway for a considerable time. Anna Tapsall (Chair of the Lambeth Community-Police Consultative Group) and I have been on the Council and Police Mental Health Steering Group with Mark Rapley, consultant. I eagerly await the publication of the Rapley Report which hopefully addresses such concerns.

I am still concerned that detainees are being held in the three Lambeth custody suites on behalf of the Immigration Service. These detainees can be held legally for up to 5 days (in extreme circumstances for 7 days) in cells designed to hold someone for hours, with no opportunity to exercise, to smoke, or to associate with others and in the case of Streatham Station, no opportunity to shower. The police stations have no storage place for such detainees to put their possessions and if they are apprehended in the street they have no opportunity to retrieve their belongings.

The Panel continues to supply Bibles, Koran's, prayer mats, books and magazines for the use of detainees, which are most welcome and help them to pass many stressful hours. If anyone has a Bible or Koran, magazines and/or paper back books (not too lengthy novels) I would be pleased to collect them.

The panel's police liaison officer, Inspector Paul Huitson who had been working with the Panel for over five years left us in September 2009 as he had been appointed as

Annual Report 2009/0

the Police Federation Representative. The Panel presented him with a book entitled Lambeth Past and Present. He was thanked profusely for his professionalism and help in investigating the panel's concerns and answering questions at panel meetings over the years. Inspector Morag Palmer replaced Paul as our liaison officer in October and we have forged a friendly and compatible working relationship. We thank her for willingness and professionalism in investigating matters brought to her attention.

At a meeting in September 2009 between the Metropolitan Police Authority (MPA) and Panel Chairs Met. Wide, the MPA announced that due to staffing cuts they would not be supporting monthly held Panel meetings supported by an MPA co-ordinator. The decision had been made that in future meetings would only be quarterly. This decision caused much concern at the time and has caused many problems. Not the least that if a Panel member cannot attend a meeting it could be at least six months before he/she could attend a meeting and seriously affects the cohesion of the Panel. The meetings are a vital opportunity for the Panel members to discuss their visits, problems and /or concerns they encounter and is an opportunity for them to interact with each other.

More significantly, however, there is a lack of contact by the MPA to the Panel Chairs (resulting in some Panel Chairs resigning in protest). The quarterly Chair's meetings held by the MPA are nothing more than an opportunity for the MPA to have a structured agenda but with no opportunity for the Chairs to interact with each other or make their concerns known at the way the MPA are managing the scheme. In effect we have been sidelined into nothing more than market researchers, filling in forms from which the MPA extract statistics. Major concerns that cannot be answered or dealt with by the Lambeth Police remain unanswered and no feedback is ever received. Adding to my dismay and chagrin, the MPA recently decided, without informing me, that I could only have copies of my Panel's visit reports every six weeks. Early receipt of these reports is essential for me to ensure that questions are raised about detainees rights whenever I deem necessary, especially concerns regarding vulnerable detainees, such as

juveniles, or those with mental health issues etc. (very important for the inexperienced custody visitors)

Despite the MPA's moratorium, I continue to hold monthly Panel meetings, regarded by them as informal and non constitutional. Inspector Morag Palmer has arranged that I can have weekly copies of all custody visitor reports made. We discuss all issues raised and she provides the police responses for discussion at the monthly Panel meeting. My Panel are very grateful for the Police assistance and co-operation.

I take this opportunity to make a tribute in memory of Mrs Greta Brooks who died on the 26th December 2009 at the age of 92, after spending two happy days of Christmas celebrations with her family and all of her grandchildren. Greta was a founder member of the Lay Visiting Scheme (later to be called Independent Custody Visiting) following the Scarman Report on the Brixton disorders in 1981.

We owe Greta and the other members of the community a huge debt of gratitude for all their work and commitment in those days by helping to make Lambeth and other boroughs a safer place for detainees, all members of society and for improving police and community relationships.

Finally this report reflects the commendable contributions made by the volunteers of the Lambeth Panel. My sincere thanks to my colleagues on the Panel for their dedicated service and commitment throughout the past year. Custody visiting could not be maintained without their selfless support. I also extend my thanks to the Lambeth Police for their co-operation.

Jane Warwick

Chair Lambeth Independent Custody Visitors.

Appendix: Membership

Membership during CPCG year 2009/10 (July to July) with those who have joined since, up to the time of publication, shown *

Community and Voluntary Organisations

Angell Town Tenants Management Organisation Cathy Valentine
Bathesda Ministries UK Ervell Bailey, Dionne Lamont
Brixton Domino Club Lloyd Leon
Brixton Market Traders Federation Stuart Horwood, John Gordon
Brixton Society Doye Akinlade, Ian Warner
Churches Together in Brixton Rev Stephen Sichel
Churches Together in Clapham Elizabeth Gibson, Anna Long
Clapham Community Partnership Ros Munday
Clapham and Stockwell Faith Forum Catriona Robertson
Clapham Sector Working Party John Wainwright
Clapham Town Neighbourhood Watch Peggy Tyler, Wally Channon RIP
Cressingham Gardens Tenants and Residents Association Sandra Moodie
Flipside Jean Carpenter
Forum of Portuguese and Spanish Speaking Communities – Lambeth Myriam Hay*
Friends of Brockwell Park Robert Holden
Herne Hill Forum Nick Abengowe
Herne Hill Society John Frankland
HM Prison Brixton Independent Monitoring Group Phyllis Jackson
Kennington Sector Working Party Michael Somers
Lambeth Older People's Forum Martin Walsh
Lambeth Summer Projects Trust Nick Mason
Lambeth Towers and Lambeth Road TRA Arulini K. Velmurugu
Lambeth Women's Aid Mary Ann Mhina, Jane Warwick
Milkwood Residents Association Maude Estwick, Hazel Watson
NACRO Tony Chrouch
Popular Youth Association Rowena Estwick
St Matthew's Estate Sheila Draper
Queen Mother Moore School Clarence Thompson MBE*
South London Synagogue Dr Brian Mantell
Stockwell Park Residents Association David Tomlinson
Streatham Common Southside Neighbourhood Watch Anna Hunter
Streatham Southern Sector Working Party George Tuson
Tulse Hill TRA Kathy White, Rhoda Anderson
Victim Support Lambeth Nadia Inwood
West Indian Ex-Servicemen's Association UK Neil Flanigan, Jim Fairweather, Keith Shaw

West Indian Standing Conference Hedley Johnson
Your Story Wesley Walters-Stephenson

Statutory Organisations

British Transport Police Insp. Ian Mixer

Crown Prosecution Service Martin Ryan

HM Prison Brixton Amy Rees

London Borough of Lambeth Council (pre-May 2009) Cllr. Kingsley Abrams; Cllr. Donatus Anyanwu; Cllr. Diane Braithwaite; Cllr. Lorna Campbell; Cllr. Rachel Heywood; Cllr. Stephen Morgan; Cllr. Neeraj Patil; Cllr. Graham Pycock; Cllr. Imogen Walker

London Borough of Lambeth Council (post-May 2009) Cllr. Kingsley Abrams; Cllr. Mark Bennett; Cllr. Diane Braithwaite; Cllr. Lorna Campbell; Cllr. Betty-Evans-Jacas; Cllr. Rachel Heywood; Cllr. Stephen Morgan; Cllr. Graham Pycock; Cllr. Imogen Walker

London Borough of Lambeth Council (post-May 2010) Cllr Mark Bennet, Cllr Lorna Campbell, Cllr Rachel Heywood, Cllr Jack Hopkins, Cllr Julia Memery, Cllr Kita Ogden, Cllr Mike Smith, Cllr Imogen Walker

London Borough of Lambeth - Community Safety

George Marshman, Ann Corbett

London Probation Service Adam Kerr

MPA Link Member Caroline Pidgeon

MPS Lambeth Ch. Supt Sharon Rowe, Ch. Supt Nick Ephgrave (as of July 2009), Supt Paul Wilson

Panel of Independent Custody Visitors for Lambeth Doye Akinlade, Jane Warwick

Individual Members

| | | |
|--------------------------------|----------------------|------------------|
| Paul Andell | Hope Barrett | Steve Bolarina |
| Rev. Canon Ivelaw Bowman | Rod Brown | Shane Collins |
| Habiba Compaore | David Corderoy | Richard Dutton |
| Betty Evans Lucas | Rosemarie Falaiye | Zoe Fonteyn |
| Gloria Gomez | Peter Harris | John Howard |
| Lena James | Lee Jasper | Bushy Kelly |
| Gill Kenealy | Veronica Ledwith | Tia Henry-Lindo |
| Most Rev. Dr Bancroft McCarthy | Hannah Mir | Patricia Moberly |
| Clare Moore | Richard Moore | James Osho |
| David Pinder | David Prichard-Jones | Juneary Raymond |
| Clovis Reid MBE* | Cheryl Sealey | Fernando Senior |
| Benjamin Simbo | Jean Slater | Jim Toohill |
| Anna Tapsell | Mike Tuppen | Hilary Wears |
| Julia Wolton | | |

Annual Report 2009/0

Board 2009/0

Individual Membership:

Anna Tapsell (Chair); Paul Andell (Vice-Chair); Canon Ivelaw Bowman; Shane Collins; Gill Kenealy;
Jim Toohill (Honorary Comptroller)

Community and Voluntary Organisations:

Wesley Walters-Stephenson (Your Story: Vice Chair); Doye Akinlade (Brixton Society); Sandra
Moodie (Cressingham Gardens TRA); Ros Munday (Clapham Community Partnership); Jane
Warwick (Lambeth Women's Aid)

Safer Neighbourhood Panels: Vacancy

Administration: Ben McKendrick

Contact Details

Unit 58
Eurolink Business Centre,
49 Effra Road
London SW2 1BZ,

T: 020 7733 0878

F: 020 7274 7623

E: admin@lambethcpcg.org.uk

W: www.lambethcpcg.org.uk

Company Limited by Guarantee, Registration No:5623445