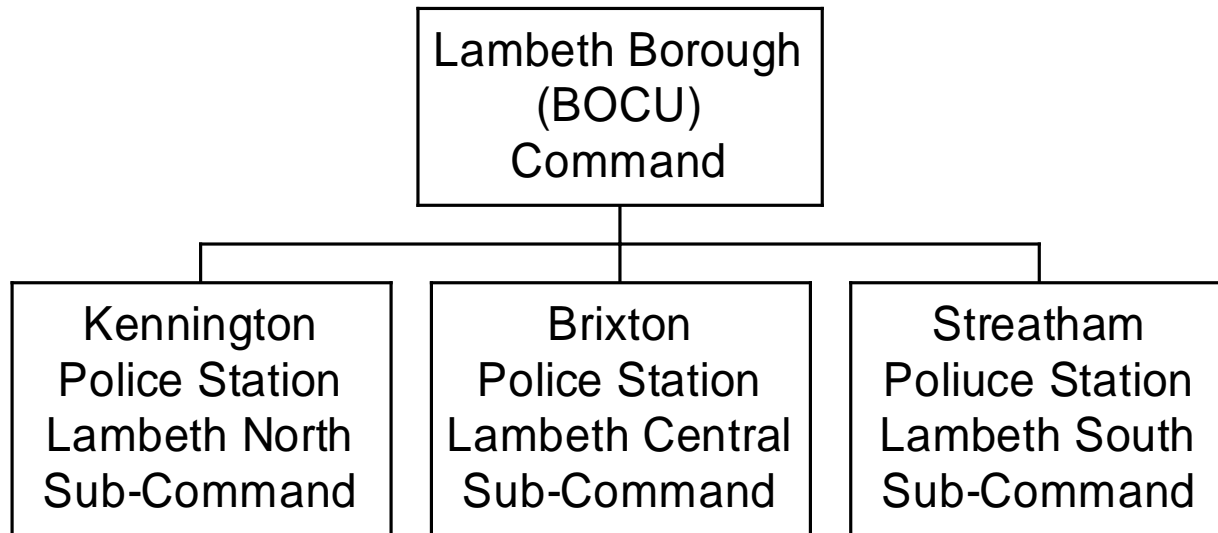


The National Intelligence Model

**DI Steve Ainscough
Lambeth MPS**

Introduction




**Intelligence
and the
National Intelligence Model
Policing**


National Intelligence Model

- Manage Information and Intelligence
- Meetings Structures
- Analysis and Performance Management

Sub-Command Scenario 1 - Intelligence Arrives

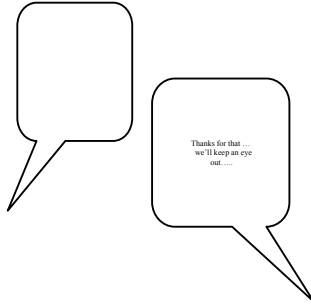


**“I’m a bit bothered
about dealers using
a bin outside my shop
for stashing drugs and
knives”**



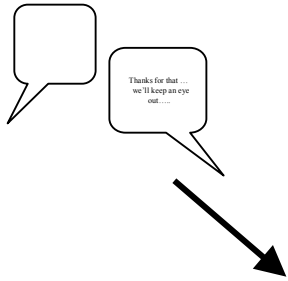
**“Thanks for that ...
we’ll keep an eye
out.....”**

Sub-Command – Evaluating Intelligence

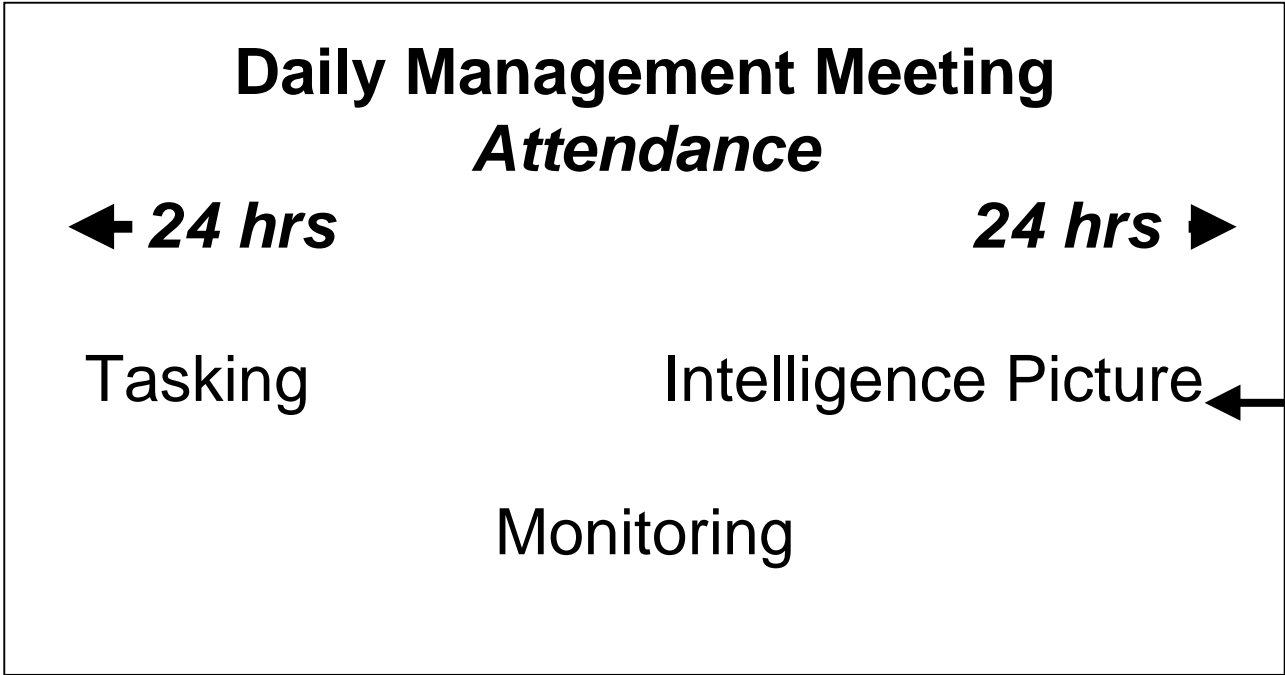


Evaluation
The Information
- accurate?
The Source
-reliable?

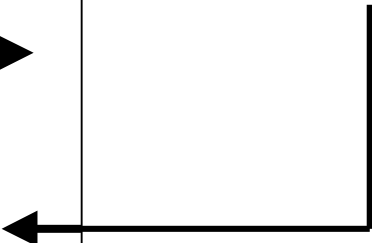
Sub-Command Daily Meetings



Evaluation



Intelligence
Analysis



Sub-Command Weekly Meetings



Evaluation



Daily Management Meeting

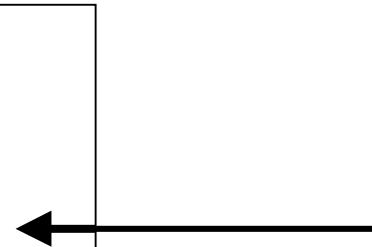


**Weekly Tasking and
Coordinating Meeting**

Crime Performance
Priority Persistent Offenders

Ongoing and Proposed
Police Activities/Operations

Intelligence
Analysis



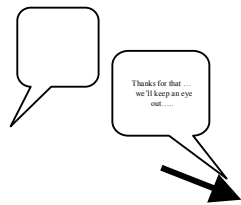
Scenario – Stage 2

Through analysis the Intelligence Unit has gathered together a series of intelligence reports regarding drug dealing and linked criminality in a small geographical area – a crime hotspot.

Scenario – Stage 3

Continuing analysis by the Intelligence Unit and management monitoring identifies a level of drug dealing and linked criminality that is beyond the resources capability of BOCU.

Pan-Borough Fortnightly Meetings



Evaluation



Daily Management Meeting



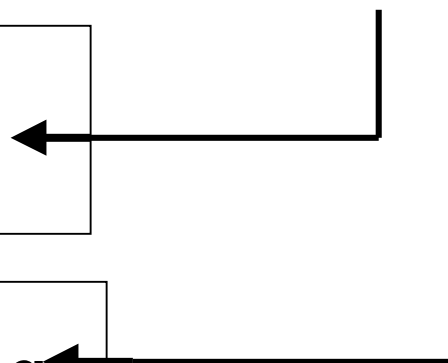
**Weekly Tasking and
Coordinating Meeting**



Fortnightly Pan-Borough Meeting

Resources/Deployments beyond the borough?

**Intelligence
Analysis**



Conclusion

NIM

- **standardised decision making processes**
- **intelligence led process**
- **briefing and debriefing**
- **performance monitoring**