

Lambeth Borough

LAMBETH COMMUNITY POLICE CONSULTATIVE GROUP

Martin Bridger
Borough Commander

7th March 2006

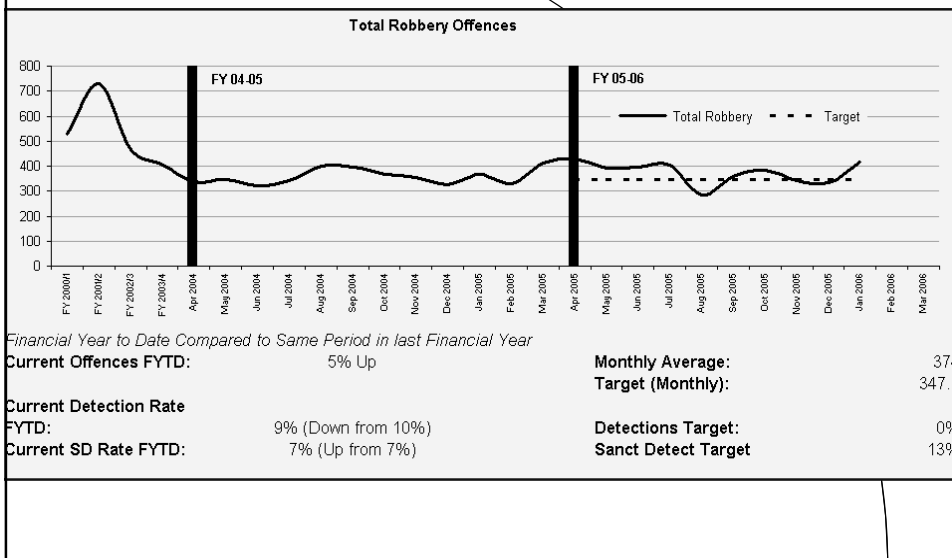
Crime Figures (Jan)

	End Jan	End Jan	%	Victims
	2004	2005	Change	
Street Crime	3481	3583	+2.9%	+ 102
Burglary	2643	2419	-8.5%	-224
Autocrime	4296	4287	-0.2%	-9
TNO's	38688	37659	-2.7%	-1029
DV	2713	2332	-14%	-381
Race	379	341	-10.0%	-38
Homophobic	115	109	+5.2%	-6
Gun Crime	202	256	+26.7%	+54

Detection Rates (Jan)

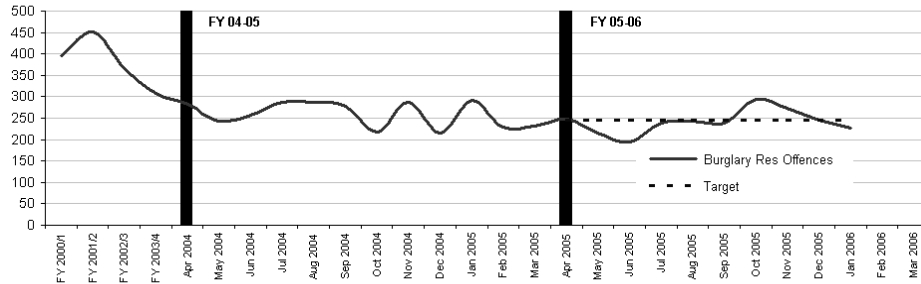
	Sanction		Total	
	Target	Actual	Target	Actual
Street Crime	13%	6.9%		
Burglary	14%	18.7%		
Autocrime	6%	3.7%		
TNO's	17%	19.1%		
DV	27%	27%	60%	68.2%
Race	22%	38.4%	35%	38.4%
Homophobic	20%	18.3%	35%	30.3%
Gun Crime	25%	11.3%		

Example of New Police Report



Example of New Police Report

Burglary Res Offences



Financial Year to Date Compared to Same Period in last Financial Year

Current Offences FYTD: -8% Down

Current Detection Rate FYTD: 20% (Up from 14%)

Current SD Rate FYTD: 19% (Up from 12%)

Monthly Average: 242

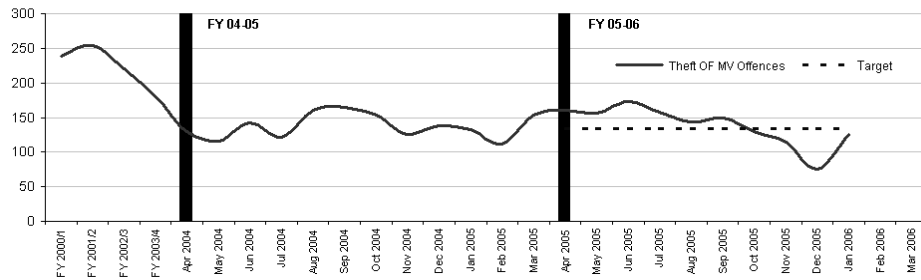
Target (Monthly): 245.8

Detections Target: 0%

Sanct Detect Target: 14%

Example of New Police Report

Theft OF MV Offences



Financial Year to Date Compared to Same Period in last Financial Year

Current Offences FYTD: 0% Down

Current Detection Rate FYTD: 9% (Up from 7%)

Current SD Rate FYTD: 7% (Up from 6%)

Monthly Average: 139

Target (Monthly): 133.5

Detections Target: 0%

Sanct Detect Target: 7%

Operation No Deal Update (12/12/05 – 20/02/06)

Total Stops	897
Stop and Accounts	325
Stop and Searches	572
Total Arrests	221
Arrests from Stop and Search	119
Arrest Rate	21%



Operation No Deal Update (12/12/05 – 20/02/06)

- **Varied Arrests**
- **50% were drugs offences;**
- **20% for dishonesty (theft type offences);**
- **12% violence and public order offences;**
- **18% other.**

Operation No Deal Update (12/12/05 – 20/02/06)

- Lambeth addresses were provided by 35% of those persons searched
- The majority of those searched being in the age range of 26 years and 40 years (57%).
- 11% of those searched were under 21 years of age.

Murders 2005

<u>Date</u>	<u>Victim</u>	<u>Status</u>
30 th January	Joan TYRELL	Husband convicted manslaughter, sentenced to hospital order.
21 st February	Justin BERNIER	Arrests made. Enquiries continue.
25 th February	Raquel ALVES	One person charged remanded in custody. Trial set 13 th March 2006.
7 th July	Julian DEGRAFT-HAYFORD	Two persons charged with murder. Trial set 6 th March 2006
1 st August	Charles Owusu ANOKYE	4 persons charged and remanded for trial 24 th April 2006.
13 th November	Aleksandra DRONJAK	1 person charged remanded in custody. Pre case management hearing 10 th March 2006.
14 th December	Anthony MAY	2 persons charged and remanded in custody trial 28 th April 2006

Murders 2006

<u>Date</u>	<u>Victim</u>	<u>Status</u>
9 th January	Matthew Roy SMITH	Colmer Road, Streatham – 7 Arrested in relation to the murder , 1 in custody for a related robbery, 1 in custody for an unrelated firearms offence, 1 charged with murder
30 th January	Thomas Fahey	Victim shot during an attempted armed robbery 24-06-05. He died as a result of his injuries 30-1-06. Two persons have been arrested and charged with murder and a robbery. Both have been remanded in custody for trial. Date to be fixed
27 th January	Michael Gallagher	The victim was stabbed by his neighbour who suffers from mental health problems. Suspect had been arrested and charged with murder and has been remanded in custody, for trial. Date to be fixed.

Any Questions?



Community Police Consultative Group for Lambeth

Monthly Police Report

March 2006

**The CPCG report will be produced on a Monthly basis by the Lambeth Police
Performance & Review Unit**

Not Protectively Marked

Protective Marking	Not Protectively Marked
FOIA Exemption	None
Publication Scheme	No
Title and Version	Lambeth Community and Police Consultative Group Monthly Report
Purpose	To Inform Relevant Staff and Community of Performance
Relevant To	All Staff on Lambeth BOCU and community members
Author and warrant / pay number	Trevor Peplow PC 394 LX
OCU / Branch / Unit	Lambeth Police Performance and Review Unit @ Frank O'Neill House
Summary	Report is produced on a monthly basis
Date Created	24 February 2006
Review Date	Monthly as Required

INDEX

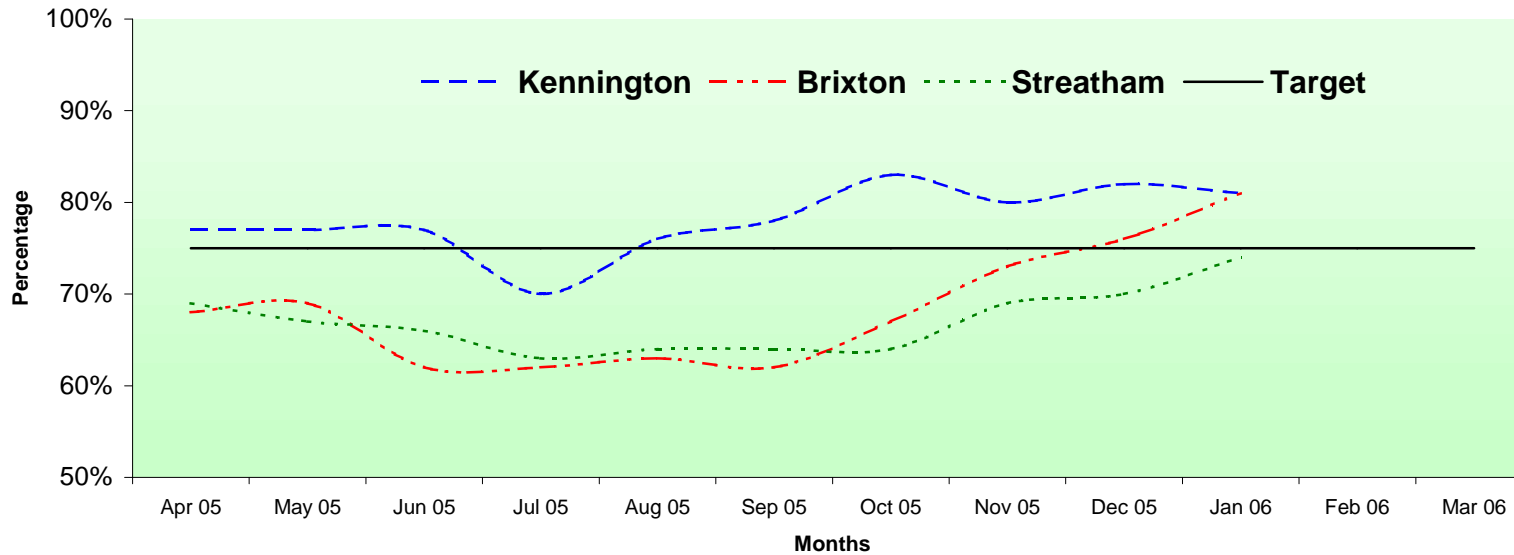
LAMBETH BOROUGH

Page 1	CAD Achievements
Pages 2-7	Classified and Confirmed Offences, Sanctioned and Total Detections for Robbery Burglary Theft FROM and Theft OF Motor Vehicle Offences Gun Enabled Offences Domestic Violence, Homophobic and Racial Offences Violent Crime Total Notifiable Offences
Page 8	Organogram
Page 9	Aid Requirements for Borough
Page 10	Crime Performance FYTD from PIB METSTATS
Page 11	Glossary
Stops Data to be part of report on a Quarterly basis (April 2006)	

CAD Achievement Trends

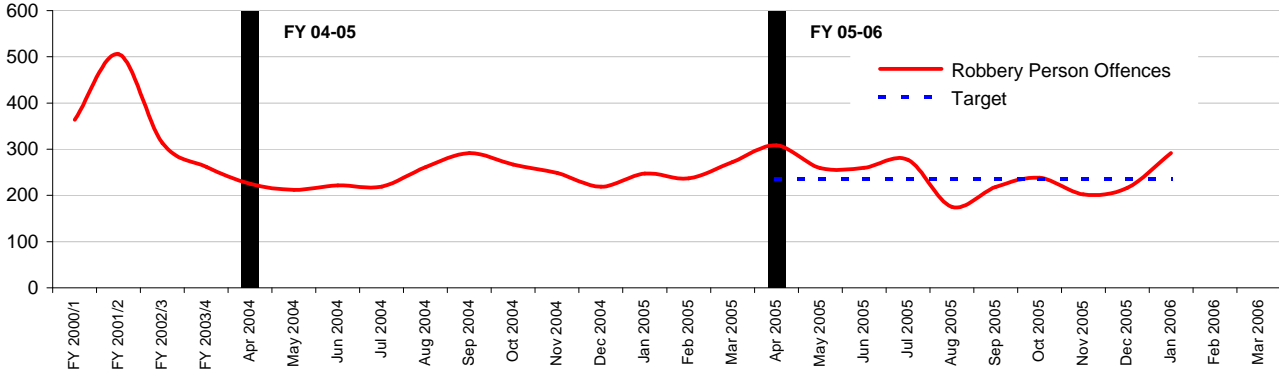
Call Type	Sector / Month	Apr 2005	May 2005	Jun 2005	Jul 2005	Aug 2005	Sep 2005	Oct 2005	Nov 2005	Dec 2005	Jan 2006	Feb 2006	Mar 2006
I CALLS	Kennington	77%	77%	77%	70%	76%	78%	83%	80%	82%	81%		
	Kennington Average YTD	78%	78%	78%	78%	78%	78%	78%	78%	78%	78%		
	Brixton	68%	69%	62%	62%	63%	62%	67%	73%	76%	81%		
	Brixton Average YTD	68%	68%	68%	68%	68%	68%	68%	68%	68%	68%		
	Streatham	69%	67%	66%	63%	64%	64%	64%	69%	70%	74%		
	Streatham Average YTD	67%	67%	67%	67%	67%	67%	67%	67%	67%	67%		
	Borough Average p/m	71%	71%	68%	65%	68%	68%	71%	74%	76%	79%	0%	0%
Borough Average YTD	71%	71%	71%	71%	71%	71%	71%	71%	71%	71%			

CAD Achievements for Lambeth SubCommands



Community Police Consultative Group for Lambeth-Monthly Report

Robbery Person Offences



Financial Year to Date Compared to Same Period in last Financial Year

Current Offences FYTD:

1% Up

Monthly Average:

245

Target Offences (Monthly):

236.2

Current Detection Rate

11% (Up from 11%)

FYTD:

Sanct Detections Target

13%

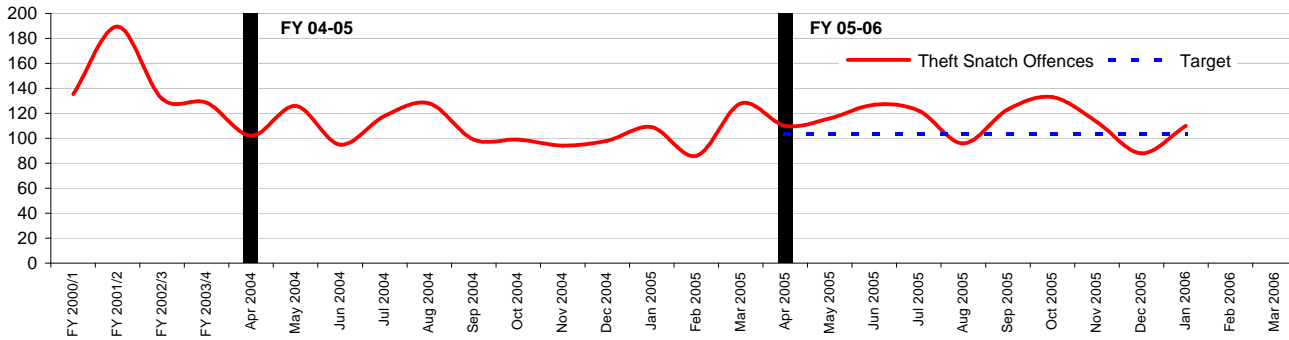
Current SD Rate FYTD:

9% (Up from 8%)

Detections Target:

0%

Theft Snatch Offences



Financial Year to Date Compared to Same Period in last Financial Year

Current Offences FYTD:

7% Up

Monthly Average:

114

Target Offences (Monthly):

103.6

Current Detection Rate

3% (Down from 4%)

FYTD:

Sanct Detections Target

13%

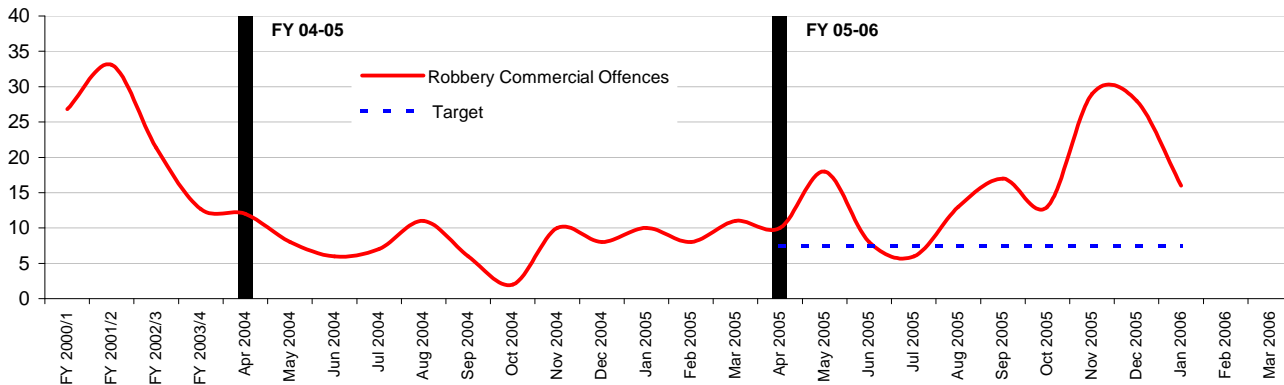
Current SD Rate FYTD:

2% (Down from 3%)

Detections Target:

0%

Robbery Commercial Offences



Financial Year to Date Compared to Same Period in last Financial Year

Current Offences FYTD:

98% Up

Monthly Average:

16

Target Offences (Monthly):

7.5

Current Detection Rate

19% (Down from 39%)

FYTD:

Sanct Detections Target

13%

Current SD Rate FYTD:

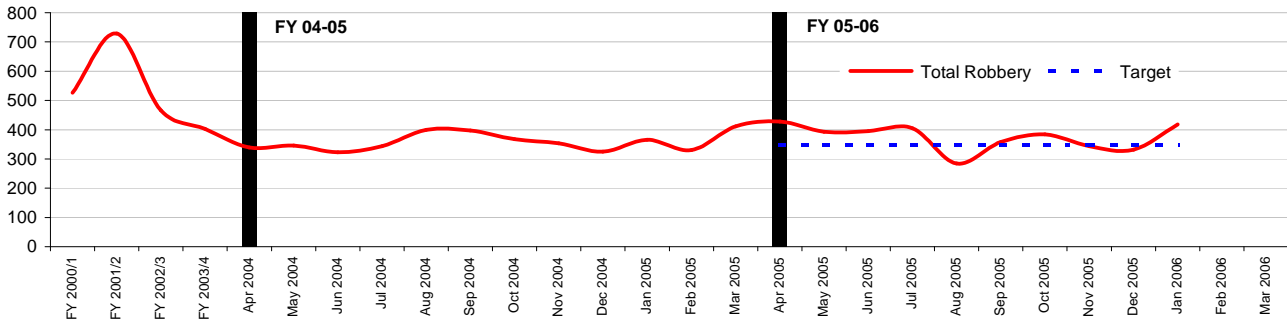
18% (Down from 35%)

Detections Target:

0%

Community Police Consultative Group for Lambeth-Monthly Report

Total Robbery Offences



Financial Year to Date Compared to Same Period in last Financial Year

Current Offences FYTD:

5% Up

Monthly Average:

374

Target (Monthly):

347.8

Current Detection Rate

FYTD:

9% (Down from 10%)

Detections Target:

0%

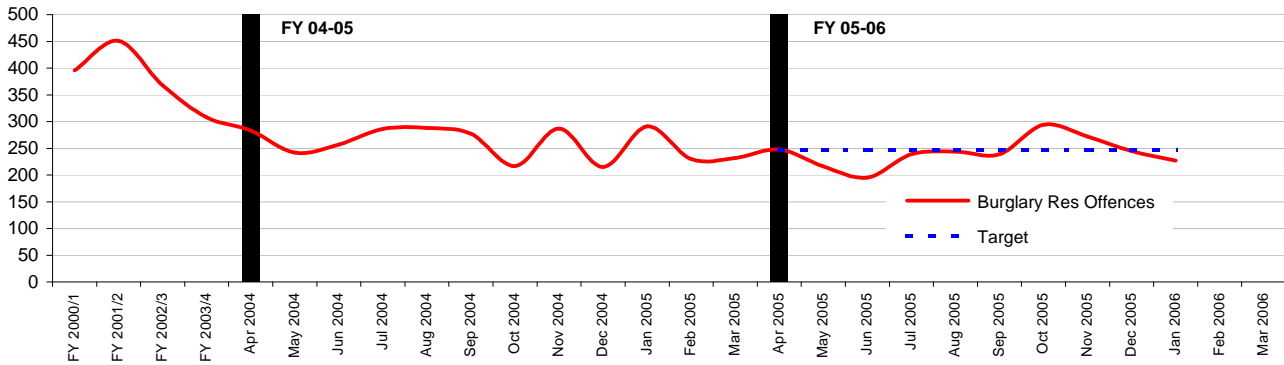
Current SD Rate FYTD:

7% (Up from 7%)

Sanct Detect Target:

13%

Burglary Res Offences



Financial Year to Date Compared to Same Period in last Financial Year

Current Offences FYTD:

-8% Down

Monthly Average:

242

Target (Monthly):

245.8

Current Detection Rate

FYTD:

20% (Up from 14%)

Detections Target:

0%

Current SD Rate FYTD:

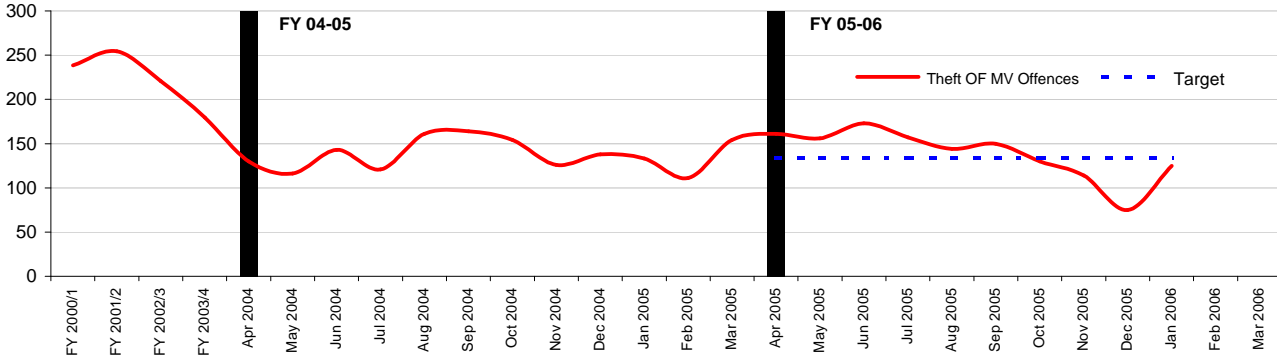
19% (Up from 12%)

Sanct Detect Target:

14%

Community Police Consultative Group for Lambeth-Monthly Report

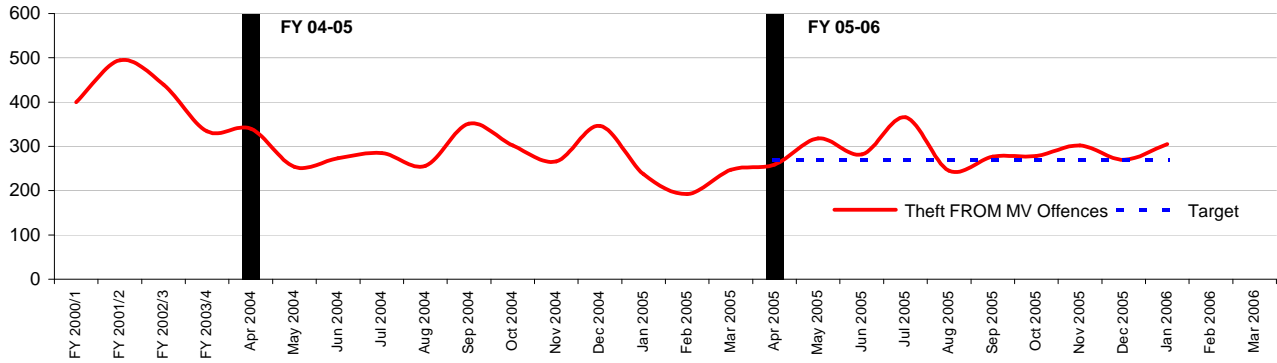
Theft OF MV Offences



Financial Year to Date Compared to Same Period in last Financial Year

Current Offences FYTD:	0% Down	Monthly Average:	139
Current Detection Rate FYTD:	9% (Up from 7%)	Target (Monthly):	133.5
Current SD Rate FYTD:	7% (Up from 6%)	Detections Target:	0%
		Sanct Detect Target:	7%

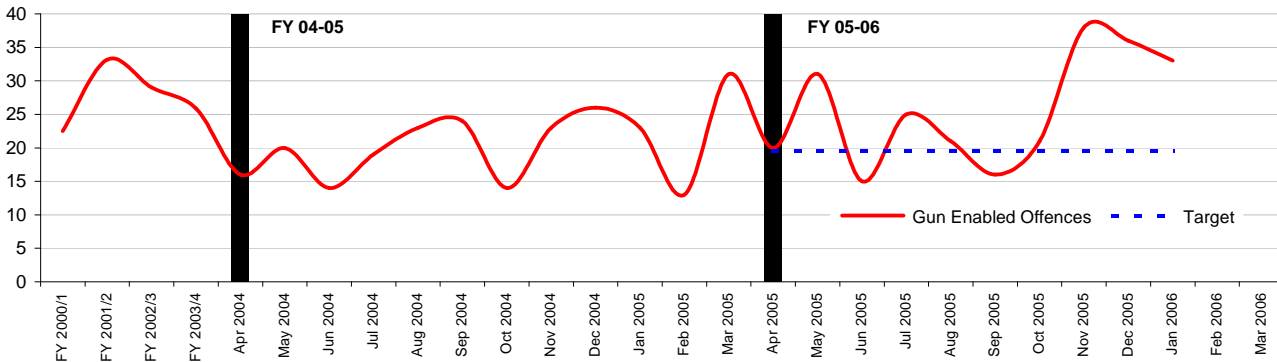
Theft FROM MV Offences



Financial Year to Date Compared to Same Period in last Financial Year

Current Offences FYTD:	0% Down	Monthly Average:	290
Current Detection Rate FYTD:	3% (Up from 1%)	Target (Monthly):	267.9
Current SD Rate FYTD:	2% (Up from 1%)	Detections Target:	0%
		Sanct Detect Target:	5%

Gun Enabled Offences

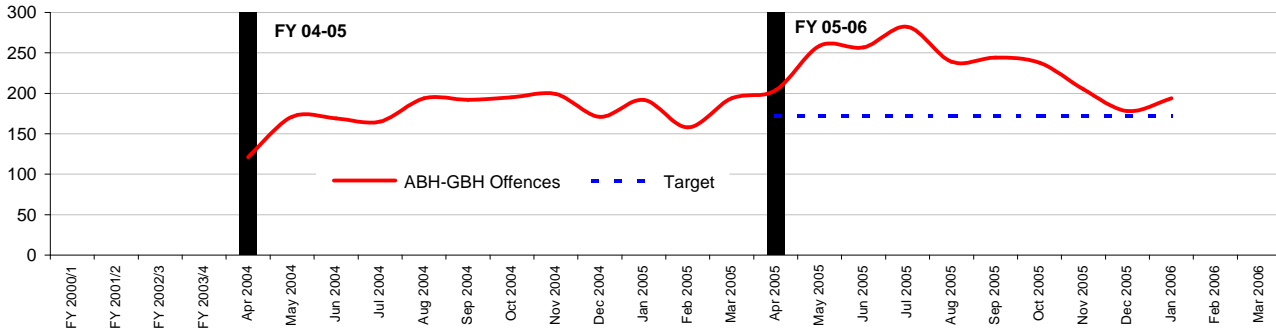


Financial Year to Date Compared to Same Period in last Financial Year

Current Offences FYTD:	27% Up	Monthly Average:	26
Current Detection Rate FYTD:	12% (Down from 29%)	Target (Monthly):	19.5
Current SD Rate FYTD:	11% (Down from 26%)	Detections Target:	0%
		Sanct Detect Target:	25%

Community Police Consultative Group for Lambeth-Monthly Report

ABH-GBH Offences



Financial Year to Date Compared to Same Period in last Financial Year

Current Offences FYTD:

30% Up

Monthly Average:

230

Target (Monthly):

171.4

Current Detection Rate

FYTD:

0% (Down from 0%)

Detections Target:

0%

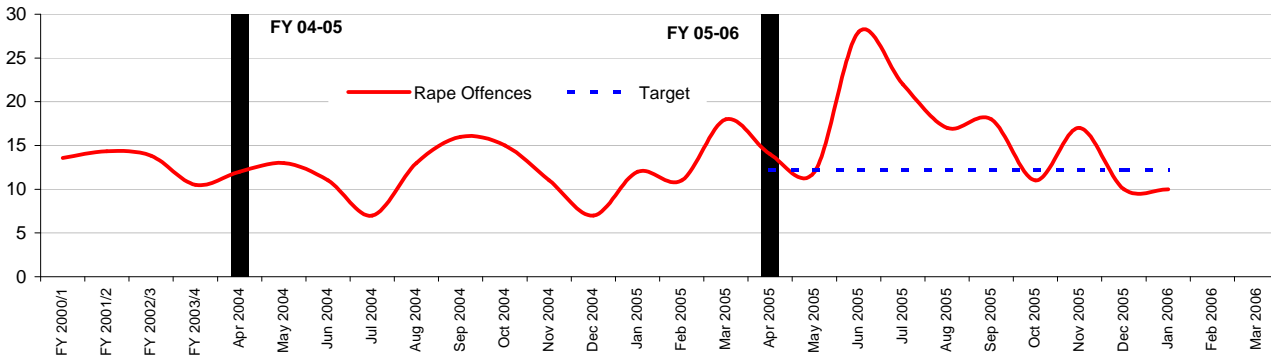
Current SD Rate FYTD:

14% (Up from 12%)

Sanct Detect Target:

15%

Rape Offences



Financial Year to Date Compared to Same Period in last Financial Year

Current Offences FYTD:

36% Up

Monthly Average:

16

Target (Monthly):

12.2

Current Detection Rate

FYTD:

36% (Down from 39%)

Detections Target:

35%

Current SD Rate FYTD:

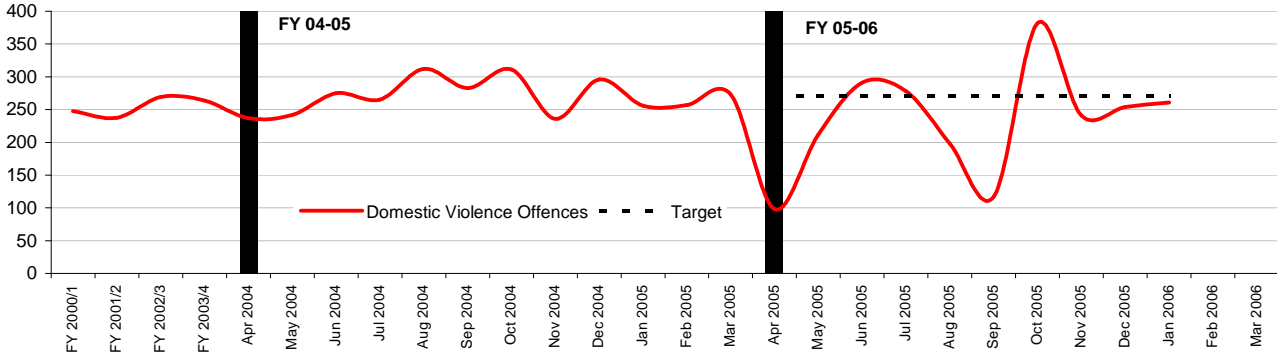
31% (Up from 19%)

Sanct Detect Target:

25%

Community Police Consultative Group for Lambeth-Monthly Report

Domestic Violence Offences



Financial Year to Date Compared to Same Period in last Financial Year

Current Offences FYTD: -14% Down

Monthly Average: 233
Target (Monthly): 270.3

Current Detection Rate

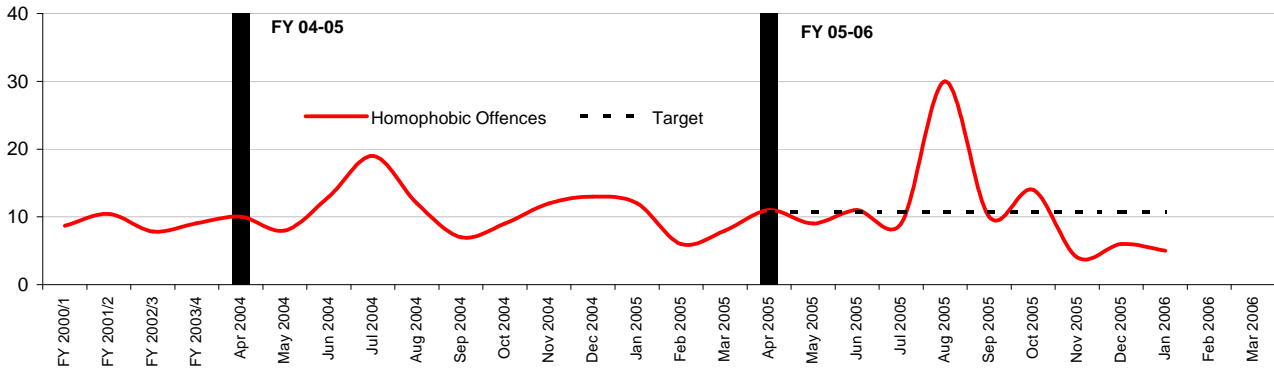
FYTD: 68% (Up from 49%)

Detections Target: 60%

Current SD Rate FYTD: 27% (Up from 16%)

Sanct Detect Target: 27%

Homophobic Offences



Financial Year to Date Compared to Same Period in last Financial Year

Current Offences FYTD: -5% Down

Monthly Average: 11
Target (Monthly): 10.8

Current Detection Rate

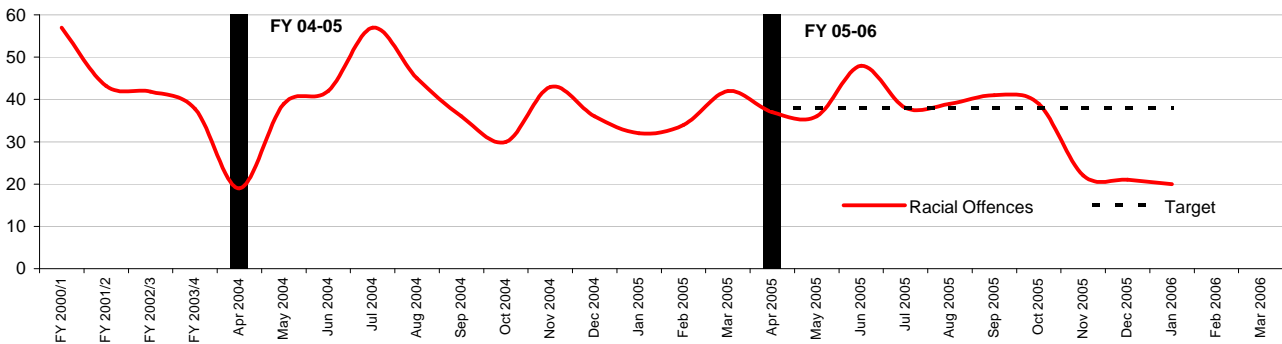
FYTD: 30% (Up from 22%)

Detections Target: 35%

Current SD Rate FYTD: 18% (Up from 16%)

Sanct Detect Target: 20%

Racial Offences



Financial Year to Date Compared to Same Period in last Financial Year

Current Offences FYTD: -10% Down

Monthly Average: 34
Target (Monthly): 37.9

Current Detection Rate

FYTD: 38% (Up from 32%)

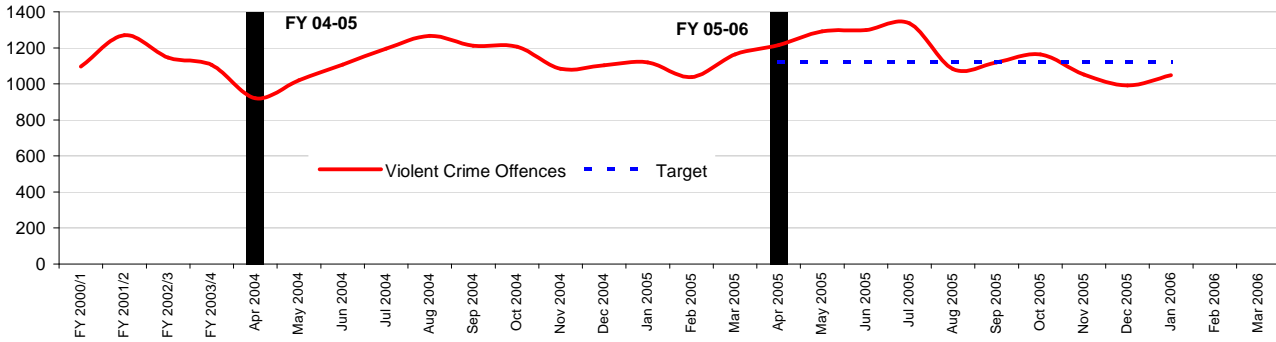
Detections Target: 35%

Current SD Rate FYTD: 28% (Up from 25%)

Sanct Detect Target: 22%

Community Police Consultative Group for Lambeth-Monthly Report

Violent Offences



Financial Year to Date Compared to Same Period in last Financial Year

Current Offences FYTD:

3% Up

Monthly Average:

1160

Target (Monthly):

1119.7

Current Detection Rate

FYTD: 38% (Up from 33%)

Detections Target:

0%

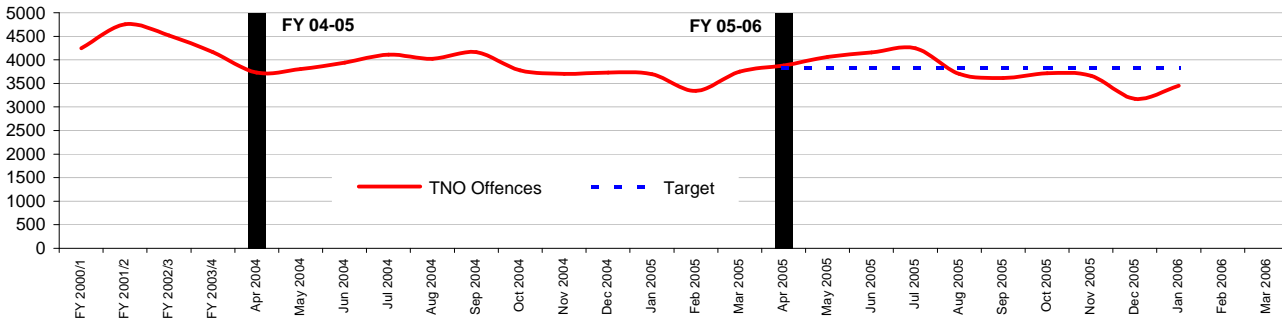
Current SD Rate FYTD:

22% (Up from 20%)

Sanct Detect Target:

0%

TNO Offences



Financial Year to Date Compared to Same Period in last Financial Year

Current Offences FYTD:

-3% Down

Monthly Average:

3766

Target (Monthly):

3815.3

Current Detection Rate

FYTD: 26% (Up from 22%)

Detections Target:

0%

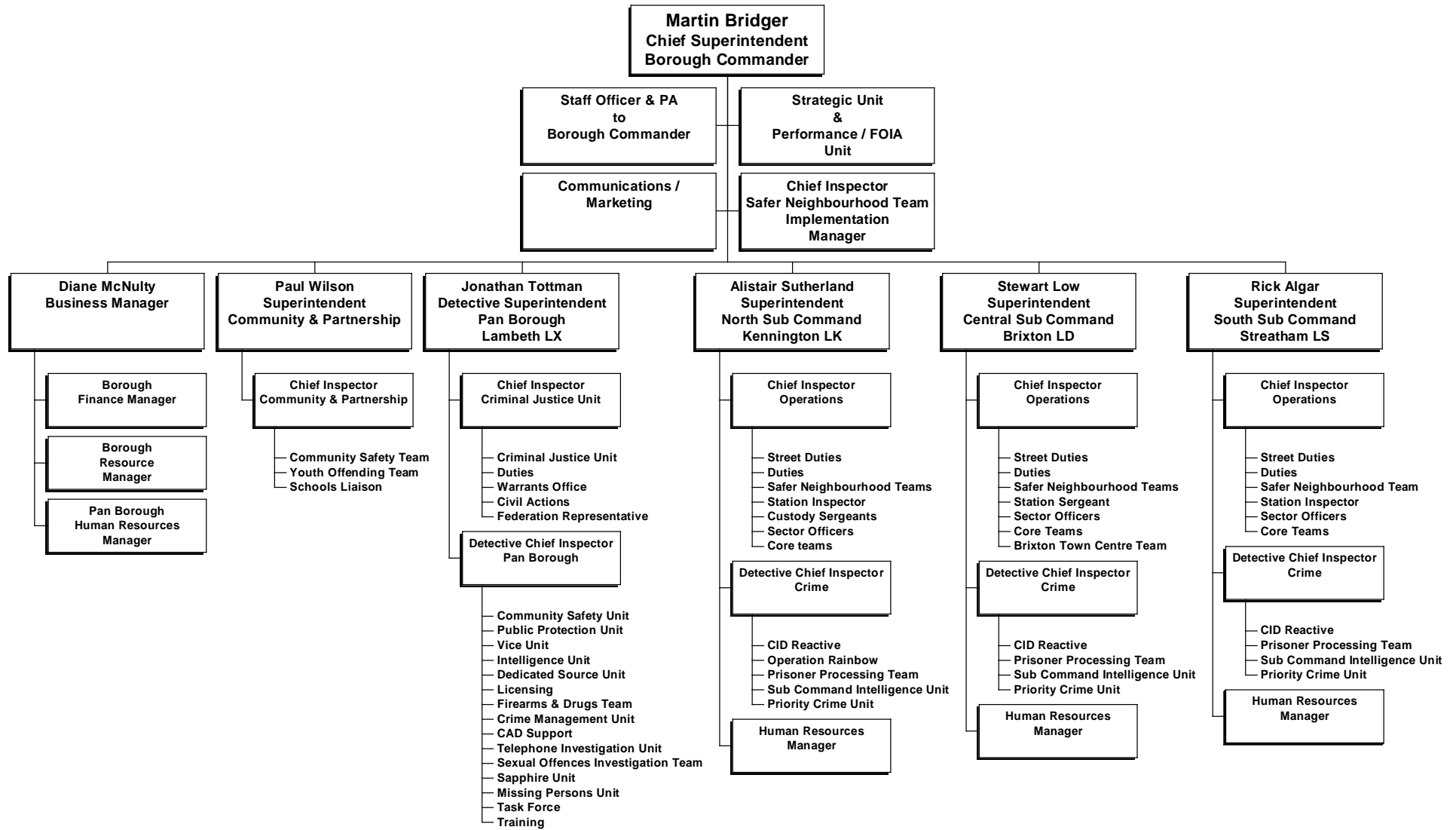
Current SD Rate FYTD:

19% (Up from 17%)

Sanct Detect Target:

17%

Lambeth Borough Police Structure



Abstractions per Month

2005 - 2006

Date	Brixton			Kennington			Streatham			Totals		
	Insp	PS	PC	Insp	PS	PC	Insp	PS	PC	Insp	PS	PC
April	4	20	154	3	21	158	2	14	114	9	55	426
May	3	29	146	4	22	147	6	16	117	13	67	410
June	2	18	128	2	22	135	3	16	100	7	56	363
July	14	70	492	14	83	506	13	53	387	41	206	1385
August	19	65	508	16	62	468	18	47	399	53	174	1375
September	7	56	267	5	47	300	8	34	218	20	137	785
October	6	20	125	2	17	158	1	6	46	9	43	329
November	10	36	210	8	28	240	9	20	122	27	84	572
December	6	30	170	9	23	190	9	19	126	24	72	486
January	4	18	102	2	14	114	5	10	79	11	42	295

Lambeth Crime Table FY 2005-2006

January 2006		Offences		Sanctioned		Detections		Non-Sanctioned		Detections		Detections & Detection Rate		Persons Accused			
		MPS Total	Lambeth	MPS Total	%	MPS Total	%	MPS Total	%	MPS Total	%	MPS Total	%	MPS Total	Lambeth		
Violence Against the Person		15534	693	4491	28.91%	208	30.01%	2745	17.67%	176	25.40%	7236	46.58%	384	55.41%	3015	126
	Murder	16	1	12	75.00%	1	100.00%	0	0.00%	0	0.00%	12	75.00%	1	100.00%	16	4
	GBH	458	23	124	27.07%	3	13.04%	19	4.15%	0	0.00%	143	31.22%	3	13.04%	89	1
	ABH	6122	293	1439	23.51%	81	27.65%	1212	19.80%	109	37.20%	2651	43.30%	190	64.85%	1031	51
	Common Assault	3712	180	506	13.63%	22	12.22%	937	25.24%	42	23.33%	1443	38.87%	64	35.56%	275	9
	Offensive Weapon	699	48	579	82.83%	37	77.08%	24	3.43%	3	6.25%	603	86.27%	40	83.33%	420	24
	Harassment	3648	106	1467	40.21%	47	44.34%	403	11.05%	15	14.15%	1870	51.26%	62	58.49%	982	24
	Other Violence	879	42	364	41.41%	17	40.48%	150	17.06%	7	16.67%	514	58.48%	24	57.14%	202	13
Sexual Offences		857	47	260	30.34%	10	21.28%	53	6.18%	4	8.51%	313	36.52%	14	29.79%	203	7
	Rape	180	10	63	35.00%	7	70.00%	9	5.00%	2	20.00%	72	40.00%	9	90.00%	56	5
	Other Sexual	677	37	197	29.10%	3	8.11%	44	6.50%	2	5.41%	241	35.60%	5	13.51%	147	2
Robbery		3902	308	588	15.07%	18	5.84%	30	0.77%	2	0.65%	618	15.84%	20	6.49%	472	16
	Personal Property	3646	292	547	15.00%	17	5.82%	27	0.74%	1	0.34%	574	15.74%	18	6.16%	431	15
	Business Property	256	16	41	16.02%	1	6.25%	3	1.17%	1	6.25%	44	17.19%	2	12.50%	41	1
Burglary		9433	326	1522	16.13%	21	6.44%	49	0.52%	1	0.31%	1571	16.65%	22	6.75%	463	19
	Burglary in a Dwelling	5983	227	1102	18.42%	11	4.85%	31	0.52%	0	0.00%	1133	18.94%	11	4.85%	239	9
	Burglary in Other Buildings	3450	99	420	12.17%	10	10.10%	18	0.52%	1	1.01%	438	12.70%	11	11.11%	224	10
Theft and Handling		33603	1298	3667	10.91%	92	7.09%	485	1.44%	17	1.31%	4152	12.36%	109	8.40%	2381	52
Motor Vehicle Crime		12407	430	1031	8.31%	14	3.26%	33	0.27%	1	0.23%	1064	8.58%	15	3.49%	363	6
	Theft/Taking of M/V	3487	125	322	9.23%	7	5.60%	23	0.66%	0	0.00%	345	9.89%	7	5.60%	213	4
	Theft from a Vehicle	8920	305	709	7.95%	7	2.30%	10	0.11%	1	0.33%	719	8.06%	8	2.62%	150	2
	M/V Interference & Tampering	385	4	39	10.13%	1	25.00%	1	0.26%	0	0.00%	40	10.39%	1	25.00%	21	0
Theft from Person		3815	209	117	3.07%	9	4.31%	7	0.18%	1	0.48%	124	3.25%	10	4.78%	66	3
	Snatches	1292	110	76	5.88%	3	2.73%	3	0.23%	1	0.91%	79	6.11%	4	3.64%	38	2
	Picking Pockets etc	2523	99	41	1.63%	6	6.06%	4	0.16%	0	0.00%	45	1.78%	6	6.06%	28	1
	Theft from Shops	3354	87	1780	53.07%	30	34.48%	333	9.93%	10	11.49%	2113	63.00%	40	45.98%	1418	17
	Theft/Taking of Pedal Cycles	1167	58	36	3.08%	0	0.00%	10	0.86%	0	0.00%	46	3.94%	0	0.00%	27	0
	Other Theft	12276	494	481	3.92%	26	5.26%	96	0.78%	4	0.81%	577	4.70%	30	6.07%	350	20
	Handling Stolen Goods	199	16	183	91.96%	12	75.00%	5	2.51%	1	6.25%	188	94.47%	13	81.25%	136	6
Fraud or Forgery		4001	85	755	18.87%	23	27.06%	49	1.22%	3	3.53%	804	20.09%	26	30.59%	379	11
	Counted per Victim	3759	78	599	15.94%	14	17.95%	42	1.12%	2	2.56%	641	17.05%	16	20.51%	283	6
	M/V Interference & Tampering	242	7	156	64.46%	9	128.57%	7	2.89%	1	14.29%	163	67.36%	10	142.86%	96	5
Criminal Damage		10288	381	1015	9.87%	49	12.86%	473	4.60%	36	9.45%	1488	14.46%	85	22.31%	778	32
	Criminal Damage to a Dwelling	2532	119	294	11.61%	16	13.45%	200	7.90%	20	16.81%	494	19.51%	36	30.25%	225	6
	Criminal Damage to Other Bldg	1380	41	193	13.99%	6	14.63%	62	4.49%	3	7.32%	255	18.48%	9	21.95%	149	3
	Criminal Damage to M/V	5003	178	292	5.84%	13	7.30%	103	2.06%	10	5.62%	395	7.90%	23	12.92%	210	14
	Other Criminal Damage	1373	43	236	17.19%	14	32.56%	108	7.87%	3	6.98%	344	25.05%	17	39.53%	194	9
Drugs		4169	265	3886	93.21%	216	81.51%	79	1.89%	4	1.51%	3965	95.11%	220	83.02%	1682	91
	Drug Trafficking	431	28	404	93.74%	21	75.00%	6	1.39%	0	0.00%	410	95.13%	21	75.00%	335	14
	Possession of Drugs	3720	233	3463	93.09%	193	82.83%	70	1.88%	4	1.72%	3533	94.97%	197	84.55%	1329	75
	Other Drug Offences	18	4	19	105.56%	2	50.00%	3	16.67%	0	0.00%	22	122.22%	2	50.00%	18	2
Other Notifiable Offences		807	46	486	60.22%	28	60.87%	40	4.96%	2	4.35%	526	65.18%	30	65.22%	375	17
	Going Equipped	71	4	68	95.77%	4	100.00%	1	1.41%	0	0.00%	69	97.18%	4	100.00%	43	1
	Other Notifiable	736	42	418	56.79%	24	57.14%	39	5.30%	2	4.76%	457	62.09%	26	61.90%	332	16
TOTAL NOTIFIABLE OFFENCES		82594	3449	16670	20.18%	665	19.28%	4003	4.85%	245	7.10%	20673	25.03%	910	26.38%	9748	371

Sanction Detections = charge, caution, summon, TICs & FPNs, cannabis warning
 Non Sanctioned Detections = authority detections
 Detections = Sanction Detections & Non Sanction Detections

*Motor Vehicle Crime = theft/taking of M/V + theft from a vehicle
 **Theft Person = snatches + picking pockets

Glossary

‘Sanctioned’ and ‘Non Sanctioned’ Detection Definitions

A ‘Sanctioned’ Detection is where an allegation has resulted in either a charge, a summons, a caution, a formal warning, a youth reprimand or an offence being taken into consideration i.e. in addition to the charge for which the person is before a court, other offences can be admitted by the defendant and the court asked to take these offences into consideration in passing sentence.

A ‘Non-Sanctioned’ Detection is where a crime has been committed and recorded and:

A suspect has been identified and interviewed by a police officer or, if an interview is not necessary to determine guilt, had at least been informed that the offence has been detected.

There must be sufficient evidence to charge the suspect with the crime.

If the victim subsequently refuses to give evidence, then a reason for this decision has been documented.

In the case where there is an identifiable victim, the victim must have been informed that the crime has been detected or in the case of a child, the parent or guardian has been informed.

Total Robbery

Combination of Robbery and Theft-Snatch

Robbery

Theft where force or threat of force is made to a person at the time or immediately before in order to steal

Theft - Snatch

Theft where force is applied to the object carried by a person ie snatching an handbag or phone from a person

Motor Vehicle Crime

Combination of theft from vehicles or taking of vehicles with the owners consent or theft of a motor vehicle

Gun Enabled Crime

A crime which is a specific listed offence ie assaults, thefts or sexual offences whilst in possession of a firearm or imitation firearm and the firearm has been seen or used

ABH

Assault where cuts bruises and other types of minor injuries are sustained

GBH

Serious assault resulting in permanent injury broken bones

TNO Total Notifiable Offences

All notifiable offences which are recorded by police and a crime report is generated

I-Call

Police graded response to a call received in the Police Control Room. Immediate response within 12mins. For incidents where a suspect is still on scene/nearby or immediate danger is perceived

CAD

Computer aided disptach which is the compter system used within Metropolitan Police Control rooms to record incidents