

CPCG May 2007

Lambeth Borough Commander

Martin Bridger QPM



1st May 2007

Lambeth End of Year Crimes Figures

- 38868 Total Crimes for last year
- 3100 Fewer Victims
- Over the last two years there have been 6916 Fewer Victims

Lambeth End of Year Crimes Figures

- British Crime Survey target –2.4%
- 8.9% reduction 2247 Fewer victims

- Residential Burglary target 0%
- 2.1% reduction 60 Fewer Victims

- Personal Robbery target 0%
- 3.1% reduction 85 Fewer Victims

- Theft Person target 0%
- 23.3% reduction 597 Fewer Victims

Lambeth End of Year Crimes Figures

- Vehicle Crime target –7%
- 9.3% reduction 429 Fewer Victims

- Assaults target –3%
- 9.9% reduction 644 Fewer Victims

- Gun enabled Crime target –4%
- 7.7% reduction

Lambeth -Sanction Detection Rates

- Total Crime target 20% achieved 22.8%
- Res Burglary target 17% not achieved 8.3%
- Robbery target 14% not achieved 11.2%
- Gun enabled Crime target 25% achieved 33.5%

Lambeth -Sanction Detection Rates

- DV Crime target 30% achieved 33.7%
- Racist Crime target 30% achieved 48.9%
- Homophobic Crime target 25% achieved 40.5%
- Rape target 30% not achieved 18.9%

Lambeth Targets For 2007/8

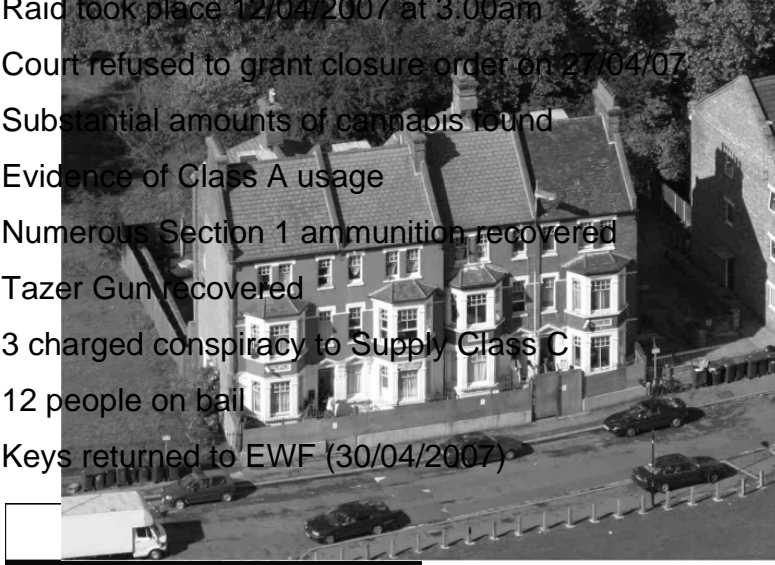
<u>Offence Targets</u>	<u>Reduction</u>
Res Burglary	-0.1%
Personal Robbery	-1.0%
Theft person	0.0%
Theft of MV	-4.1%
Theft from MV	-3.3%
MV int tamp	-13.2%
BCS Wounding	-2.1%
BCS Common Assault	-2.7%
BCS Crim Dam	-2.9%
Theft Cycle	0.0%
Assaults	-2.3%
MV Crime	-3.6%
Gun Crime	-5%
BCS Total	-2.0%

Lambeth Targets For 2007/8

<u>Sanction Detection Targets</u>	
Personal Robbery	14%
Res Burglary	20%
GBH	32%
Sexual offences	27%
Rape	30%
Domestic	40%
Racial	36%
Homophobic	33%
DV Arrest Rate	50%
TNOs	24%

St Agnes Place – Rastafarian Temple

- Raid took place 12/04/2007 at 3.00am
- Court refused to grant closure order on 27/04/07
- Substantial amounts of cannabis found
- Evidence of Class A usage
- Numerous Section 1 ammunition recovered
- Tazer Gun recovered
- 3 charged conspiracy to Supply Class C
- 12 people on bail
- Keys returned to EWF (30/04/2007)




Fire Night Club

- 28/04/2007 raided
- 9 arrests made
- 5 charged with supply class A (57 charges)
- 3 on bail 1 NFA
- Large quantities of cash and drugs recovered
- 100's of Ecstasy tablets recovered and cocaine found in hides stashed within the club
- Management to shut club for 3 weeks as a cooling down period new licensing conditions voluntarily signed up to
- Police to visit upon reopening


Kennington Crime Reduction Signs

WARD	18 Jan 2007 - 25 Feb 2007					26 Feb 2007 - 27 March 2007			
	ROBBERY	PICKPOCKET	SNATCH			ROBBERY	PICKPOCKET	SNATCH	
LK30	10	8	5	23	REDUCTION AFTER SIGNS DISPLAYED	19	6	9	4
LK31	6	5	5	16		15	6	7	2
LK32	25	11	12	48		29	10	12	7
LK33	10	1	1	12		17	10	3	4
LK34	6	2	2	10		18	12	3	3
LK35	8	6	6	20		12	6	5	1
LK36	3	11	6	20		29	4	18	7
	68	44	37	149		139	54	57	28
	149				6.7%	139			


METROPOLITAN POLICE
Working together for a safer London

Brixton Crime Reduction Signs

WARD	18 Jan 2007 - 25 Feb 2007					26 Feb 2007 - 27 March 2007			
	ROBBERY	PICKPOCKET	SNATCH			ROBBERY	PICKPOCKET	SNATCH	
LD37	8	24	14	46	REDUCTION AFTER SIGNS DISPLAYED	54	18	27	9
LD38	17	14	16	47		40	21	12	7
LD39	15	2	3	20		18	14	2	2
LD40	15	6	6	27		16	11	3	2
LD41	10	1	2	13		16	8	4	4
LD42	9	0	5	14		10	7	0	3
LD43	1	0	1	2		4	4	0	0
LD51	9	3	4	16		15	3	7	5
	84	50	51	185	173	86	55	32	
	185				6.5%	173			


METROPOLITAN POLICE
Working together for a safer London

Streatham Crime Reduction Signs

WARD	18 Jan 2007 - 25 Feb 2007				26 Feb 2007 - 27 March 2007				
	ROBBERY	PICKPOCKET	SNATCH		ROBBERY	PICKPOCKET	SNATCH		
LS44	15	2	1	18	REDUCTION AFTER SIGNS DISPLAYED	14	6	3	5
LS45	20	5	6	31		16	9	3	4
LS46	11	0	4	15		18	14	3	1
LS47	6	1	1	8		2	2	0	0
LS48	9	0	3	12		6	4	0	2
LS49	5	2	0	7		7	3	1	3
LS50	5	0	1	6		10	9	0	1
	71	10	16	97		73	47	10	16
	97			24.7%	73				



Operation Blunt


- MPS Anti knife campaign:
- 7th May until 27th May



Murder Investigations Update 2006

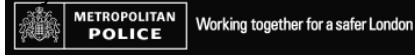
- **Khizar Hayat & Hamidullah Hamidi** On 27/04/2006 a male threw a petrol bomb into the venue. Trial date set for 14th July 2007 at CCC.
- **Simon Monteiro** Victim died on 11/05/2006 single stab wound to chest in Stockwell Road. Enqs Continue to identify a suspect.
- **Alex Mulumba Kamondo** On 08/06/2006 Stabbed O/S Black Prince PH 2 charged with murder. Abu Sarpong found guilty of murder Sentenced to life to serve minimum 14 yrs
- **Mark Murphy** On 22/08/2006 at 24, Bournevale Road, London, SW16 Victim stabbed. 1 Suspect charged. Trial date set for ~~6th June 2007 at CCC~~

Murder Investigations Update 2006

- **Carmelita Tulloch** On 05/09/2006 she received a fatal stab wound to the chest. Wickham Street, Lambeth, SE11 1 Ezekiel Maxwell Pleaded guilty to Manslaughter due to diminished responsibility.
- **Anton Smith** shot 4 times 20/10/2006 rear of 207 Clapham Park Rd 2 Suspects charged with murder Current Trial date set 18th June 2007
- **Jason Dawes** 11/12/2006 hit by car found dead with a number of stab wounds Cold Harbour Lane. Suspect charged remanded in  a & Directions set for 01/05/2007

Murder Investigations Update 2007

- **Catherine Marlow** 13/01/2007 66 South Lambeth Road, SW8
- Matthew Fagan, charged and appeared at Camberwell Green Magistrates Court on 29/1/07 and was remanded in custody to the Central Criminal Court on 7th May,2007.
- **Michael Edwards** 21/01/2007 Hart House,St Martins Estate, Kennington stabbed Suspect charged PCH at CCC 02/05/2007
- **James Smarrt – Ford** 03/02/2007 Shot at Streatham Ice Rink. One arrest made suspect on bail enqs continue.
- Many witnesses have still not come forward from the Ice rink.



Murder Investigations Update 2007

- **William Cox** 14/02/2007 shot at his house in Fenwick Place. No arrests to date Enquiries Continue
- **Stephen O'Neill** aged 54 years 03/04/2007 32 Orsett Street,SE11, By suspects assaulting causing fatal injuries b2 suspects on bail until 06/06/2007
- **Unidentified Male** aged 25 – 35, male IC3 27/04/2007 Flat 6 Clarence House Rushcroft Road SW2 murder by shooting. Still ongoing with the scene still being examined. No suspects at this stage. No motive at this stage.



Questions ?





Community Police Consultative Group for Lambeth

Monthly Police Report

CPCGLambeth

May 2007

(Up to and Including March Data)

Financial Year 2006-2007

**The CPCG report will be produced on a Monthly basis by the Lambeth Police
Performance & Review Unit**

Not Protectively Marked



INDEX

LAMBETH BOROUGH

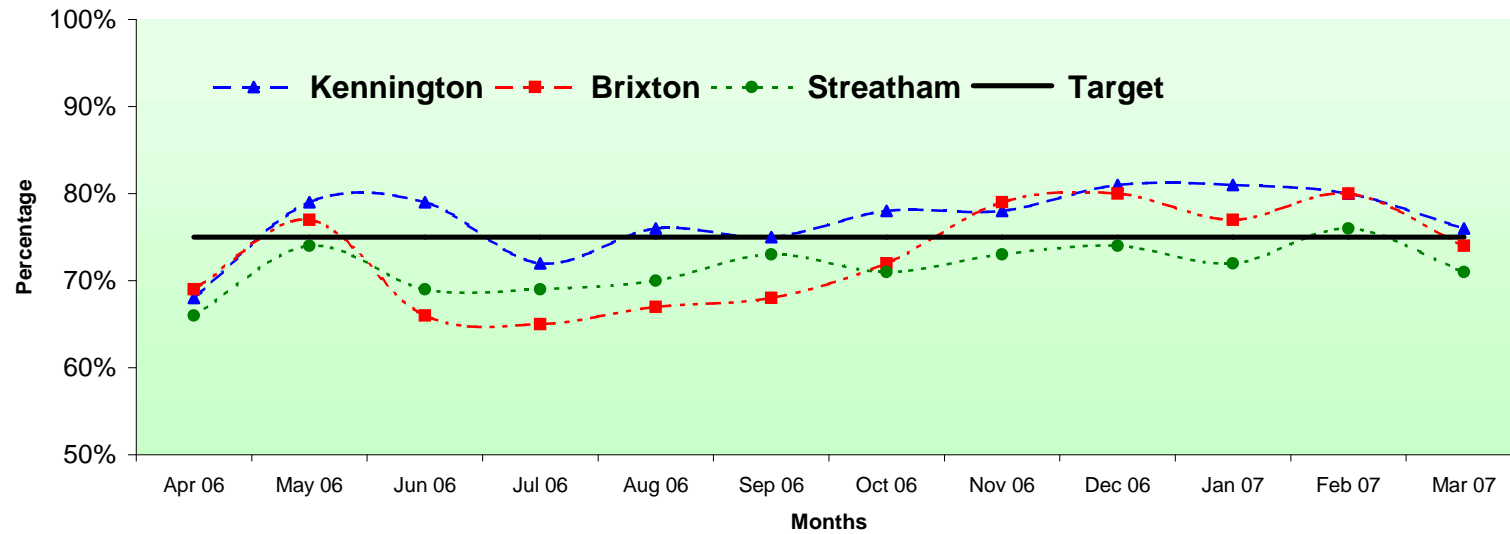
Page 1	CAD Achievements
Pages 2-6	Classified and Confirmed Offences, Detections for: Robbery Burglary Motor Vehicle Offences Gun Enabled Offences Domestic Violence Offences Homophobic and Racial Offences Violent Crime Total Notifiable Offences Drug Offences Criminal Damages Common Assault Theft of Pedal Cycle offence
Page 7	Aid Requirements / Performance FYTD
Page 8	Crime Monthly Performance
Page 9	Organogram
Page 10	Glossary

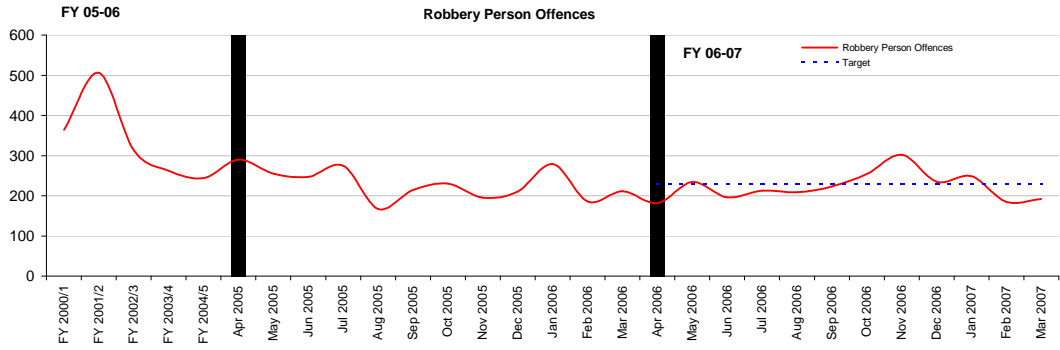
Stops Data to be part of report on a Quarterly basis

Protective Marking	Not Protectively Marked
FOIA Exemption	None
Publication Scheme	No
Title and Version	Lambeth Community and Police Consultative Group Monthly Report
Purpose	To Inform Relevant Staff and Community of Performance
Relevant To	All Staff on Lambeth BOCU and community members
Author and warrant / pay number	Trevor Peplow PC 394 LX
OCU / Branch / Unit	Lambeth Police Performance and Review Unit @ Frank O'Neill House
Summary	Report is produced on a monthly basis
Date Created	23 February 2007
Review Date	Monthly as Required

Call Type	Sector / Month	Apr 2006	May 2006	Jun 2006	Jul 2006	Aug 2006	Sep 2006	Oct 2006	Nov 2006	Dec 2006	Jan 2007	Feb 2007	Mar 2007
		I CALLS	Kennington	68%	79%	79%	72%	76%	75%	78%	78%	81%	81%
Kennington Average YTD	68%		74%	75%	75%	75%	75%	75%	76%	76%	77%	77%	77%
Brixton	69%		77%	66%	65%	67%	68%	72%	79%	80%	77%	80%	74%
Brixton Average YTD	69%		73%	71%	69%	69%	69%	69%	70%	71%	72%	73%	73%
Streatham	66%		74%	69%	69%	70%	73%	71%	73%	74%	72%	76%	71%
Streatham Average YTD	66%		70%	70%	70%	70%	70%	70%	71%	71%	71%	72%	72%
Borough Average p/m	68%		77%	71%	69%	71%	72%	74%	77%	78%	77%	79%	74%
Borough Average YTD	68%	72%	72%	71%	71%	71%	72%	72%	73%	73%	74%	74%	

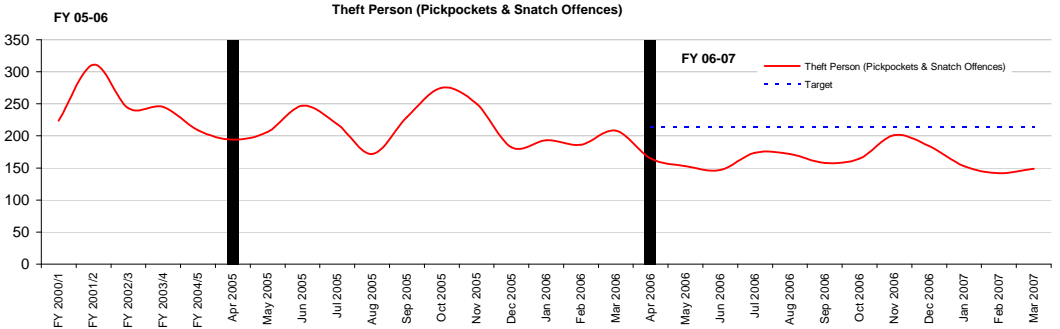
CAD Achievements for Lambeth SubCommands





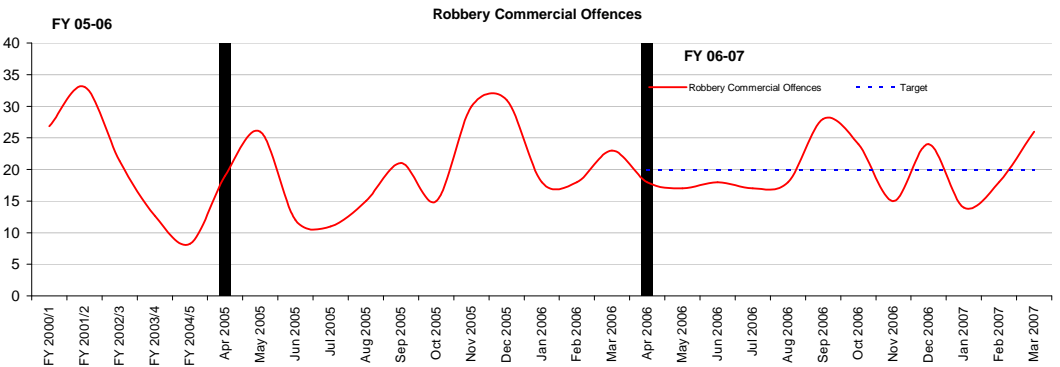
Financial Year to Date Compared to Same Period in last Financial Year

Current Offences FYTD:	-3% Down	Monthly Average:	223
Current Detection Rate FYTD:	11% (Down from 12%)	Target Offences (Monthly):	230
Current SD Rate FYTD:	11% (Up from 10%)	Sanct Detections Target:	14%
		Detections Target:	0%



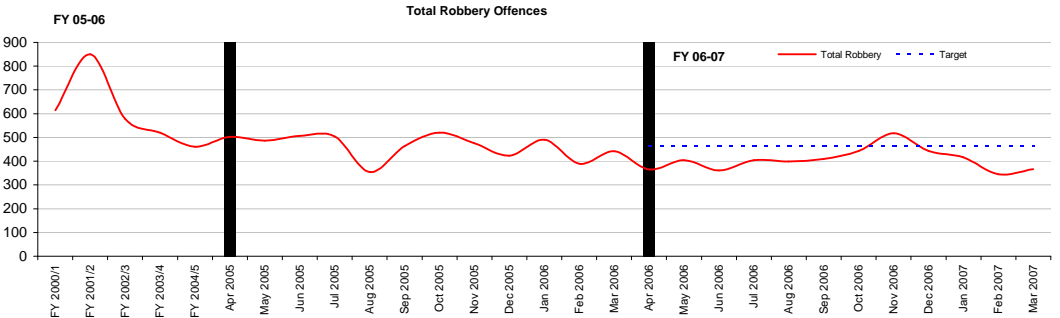
Financial Year to Date Compared to Same Period in last Financial Year

Current Offences FYTD:	-23% Down	Monthly Average:	164
Current Detection Rate FYTD:	2% (Down from 3%)	Target Offences (Monthly):	213
Current SD Rate FYTD:	2% (Up from 2%)	Sanct Detections Target:	0.0
		Detections Target:	0%



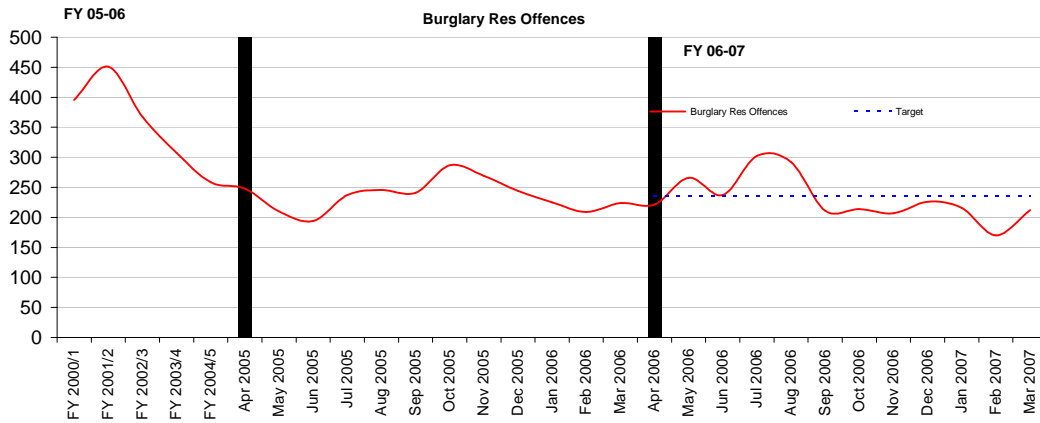
Financial Year to Date Compared to Same Period in last Financial Year

Current Offences FYTD:	-1% Down	Monthly Average:	20
Current Detection Rate FYTD:	27% (Up from 17%)	Target Offences (Monthly):	20
Current SD Rate FYTD:	27% (Up from 17%)	Sanct Detections Target:	0.0
		Detections Target:	0%



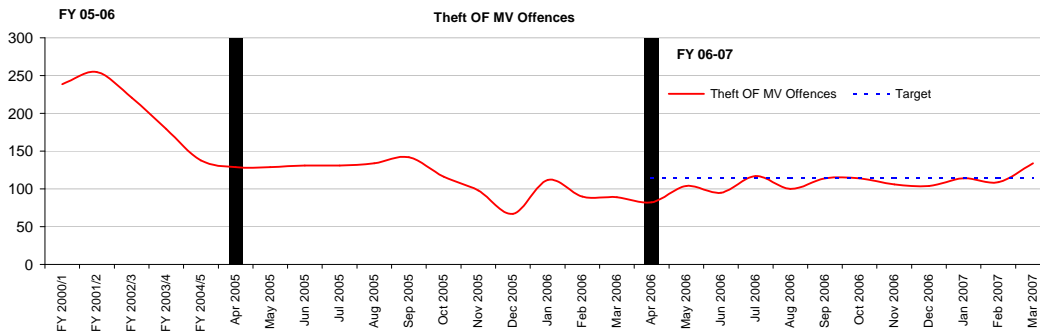
Financial Year to Date Compared to Same Period in last Financial Year

Current Offences FYTD:	-12% Down	Monthly Average:	406
Current Detection Rate FYTD:	8% (Up from 8%)	Target (Monthly):	463
Current SD Rate FYTD:	8% (Up from 6%)	Detections Target:	0.0
		Sanct Detect Target:	14%



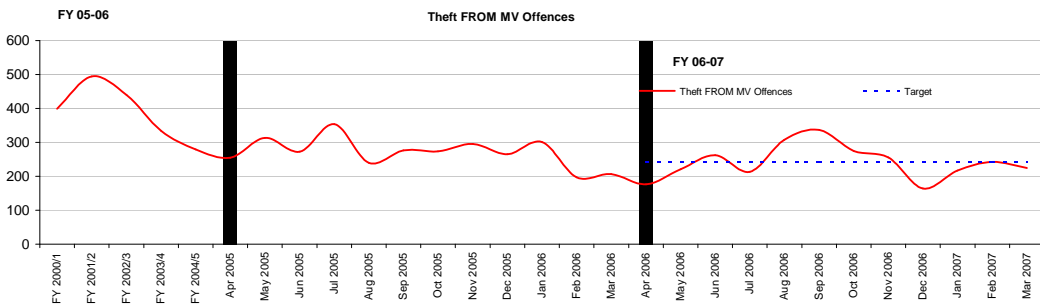
Financial Year to Date Compared to Same Period in last Financial Year
 Current Offences FYTD: -2% Down
 Current Detection Rate F 8% (Down from 18%)
 Current SD Rate FYTD: 8% (Down from 17%)

Monthly Average: 231
 Target (Monthly): 236
 Detections Target: 0.0
 Sanct Detect Target: 17%



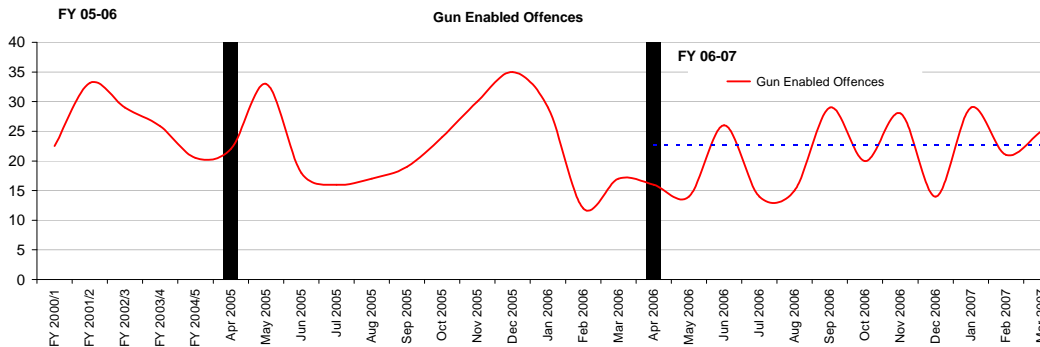
Financial Year to Date Compared to Same Period in last Financial Year
 Current Offences FYTD: -5% Down
 Current Detection Rate F 6% (Down from 9%)
 Current SD Rate FYTD: 6% (Down from 7%)

Monthly Average: 108
 Target (Monthly): 114
 Detections Target: 0.0
 Sanct Detect Target: 0%



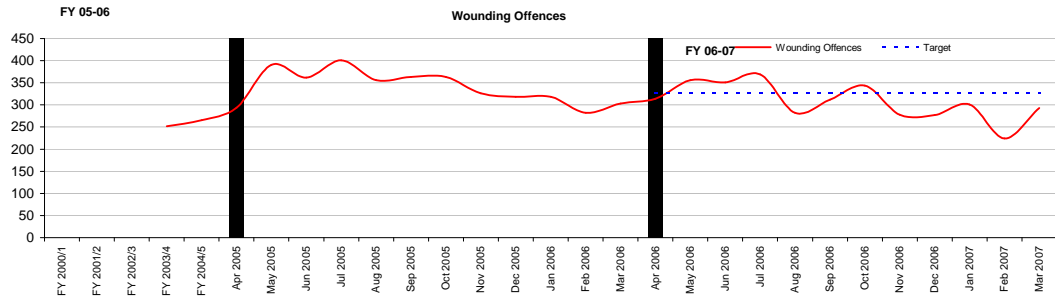
Financial Year to Date Compared to Same Period in last Financial Year
 Current Offences FYTD: -11% Down
 Current Detection Rate 6% (Up from 3%)
 Current SD Rate FYTD: 6% (Up from 3%)

Monthly Average: 241
 Target (Monthly): 244
 Detections Target: 0.0
 Sanct Detect Target: 0%

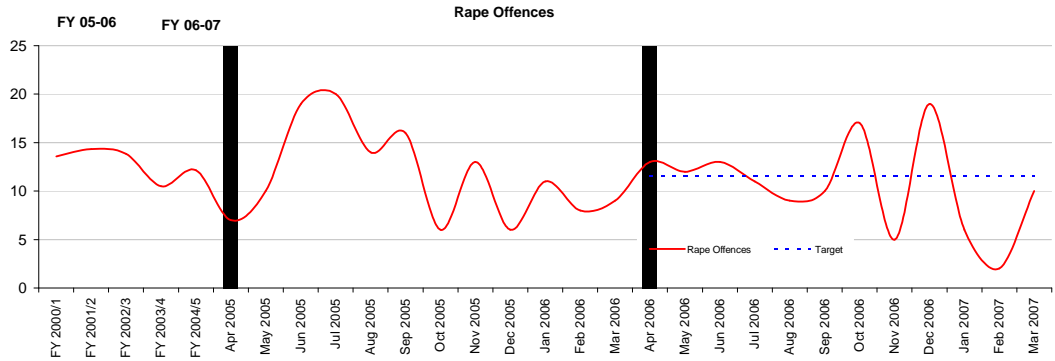


Financial Year to Date Compared to Same Period in last Financial Year
 Current Offences FYTD: -8% Down
 Current Detection Rate F 33% (Up from 16%)
 Current SD Rate FYTD: 33% (Up from 15%)

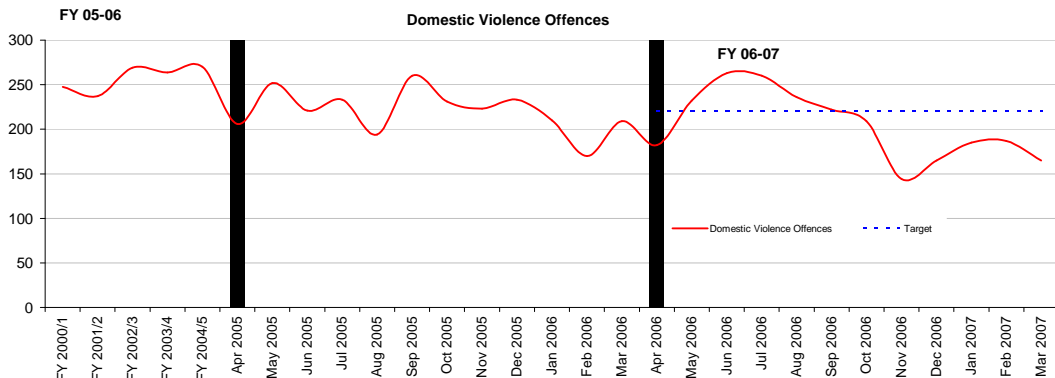
Monthly Average: 21
 Target (Monthly): 23
 Detections Target: 0.0
 Sanct Detect Target: 25%



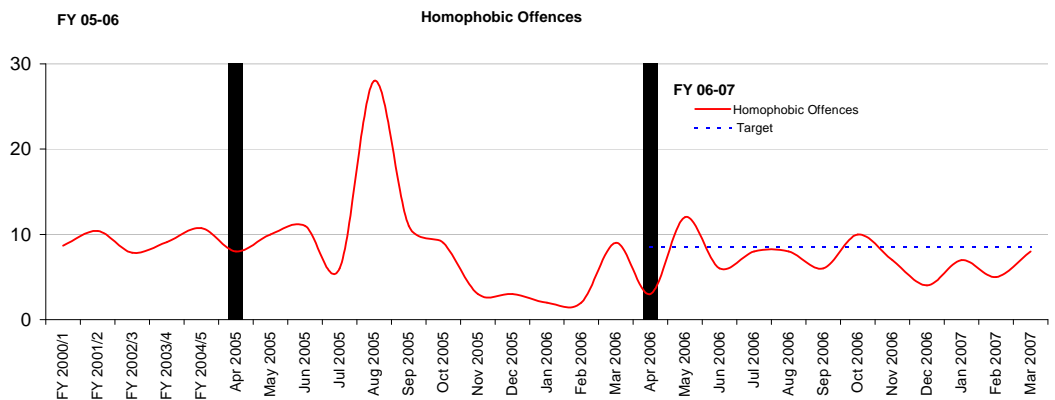
Financial Year to Date Compared to Same Period in last Financial Year
Current Offences FYTD: -9% Down **Monthly Average:** 308
Current Detection Rate F 23% (Down from 48%) **Target (Monthly):** 326
Current SD Rate FYTD: 22% (Up from 20%) **Detections Target:** 0.0
Sanct Detect Target: 0%



Financial Year to Date Compared to Same Period in last Financial Year
Current Offences FYTD: -9% Down **Monthly Average:** 11
Current Detection Rate F 21% (Down from 46%) **Target (Monthly):** 12
Current SD Rate FYTD: 19% (Down from 37%) **Detections Target:** 0.0
Sanct Detect Target: 30%

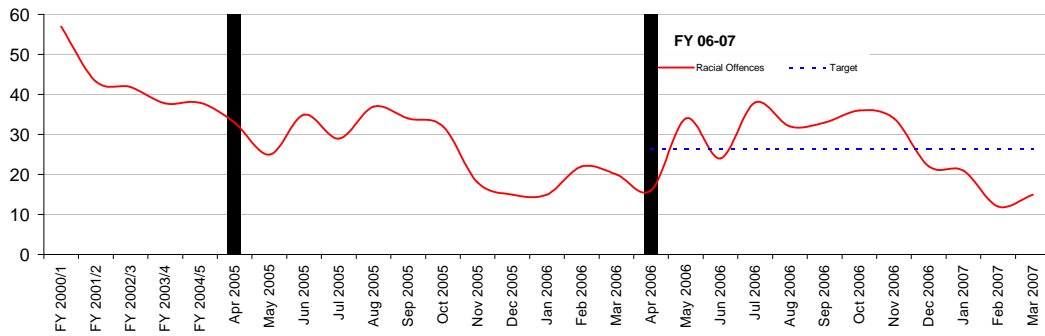


Financial Year to Date Compared to Same Period in last Financial Year
Current Offences FYTD: -7% Down **Monthly Average:** 204
Current Detection Rate 35% (Down from 72%) **Target (Monthly):** 220
Current SD Rate FYTD: 34% (Up from 30%) **Detections Target:** 0%
Sanct Detect Target: 30%



Financial Year to Date Compared to Same Period in last Financial Year
Current Offences FYTD: -18% Down **Monthly Average:** 7
Current Detection Rate 40% (Down from 43%) **Target (Monthly):** 9
Current SD Rate FYTD: 40% (Up from 28%) **Detections Target:** 0%
Sanct Detect Target: 25%

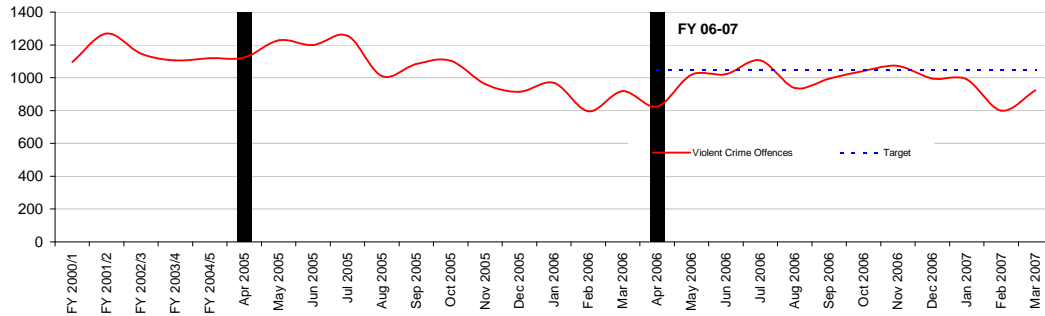
FY 05-06 Racial Offences



Financial Year to Date Compared to Same Period in last Financial Year
 Current Offences FYTD: 1% Up

Current Detection Rate	49% (Down from 50%)	Monthly Average:	26
Current SD Rate FYTD:	49% (Up from 37%)	Target (Monthly):	26
		Detections Target:	0%
		Sanct Detect Target:	30%

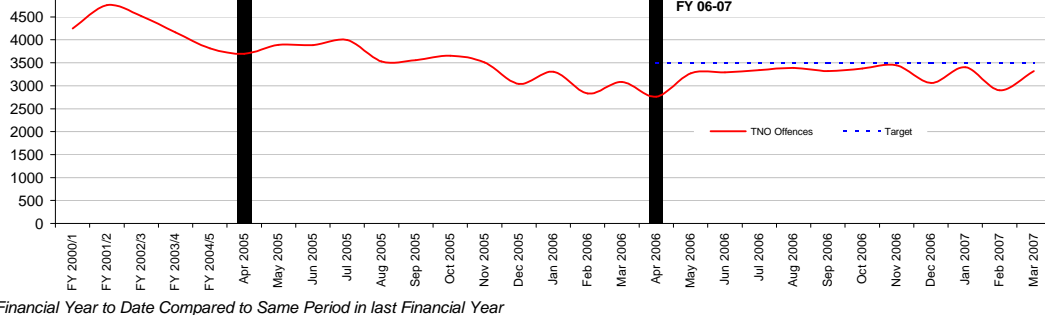
FY 05-06 Violent Offences



Financial Year to Date Compared to Same Period in last Financial Year
 Current Offences FYTD: -7% Down

Current Detection Rate	26% (Down from 41%)	Monthly Average:	977
Current SD Rate FYTD:	26% (Up from 24%)	Target (Monthly):	1047
		Detections Target:	0%
		Sanct Detect Target:	0%

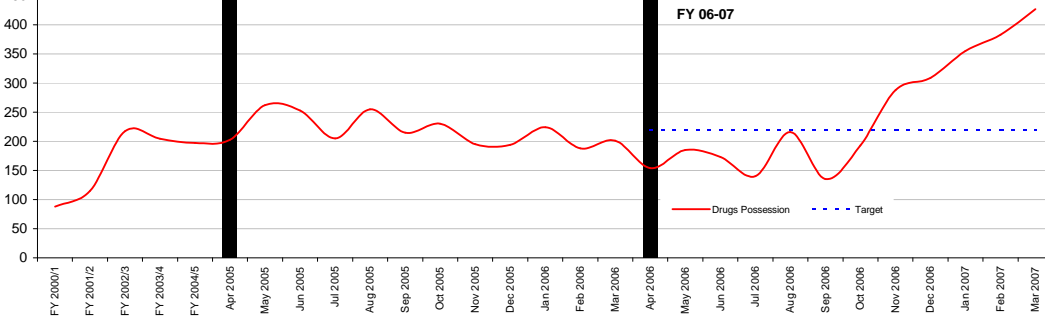
FY 05-06 TNO Offences



Financial Year to Date Compared to Same Period in last Financial Year
 Current Offences FYTD: -7% Down

Current Detection Rate	23% (Down from 27%)	Monthly Average:	3239
Current SD Rate FYTD:	23% (Up from 20%)	Target (Monthly):	3497
		Detections Target:	0%
		Sanct Detect Target:	20%

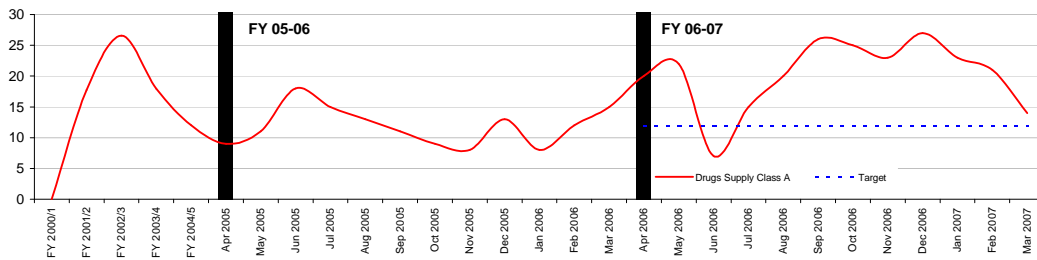
FY 05-06 Drugs Possession Offences



Financial Year to Date Compared to Same Period in last Financial Year
 Possession

Current Offences FYTD:	13% Up	Monthly Average:	247
Current Detection Rate	93% (Down from 97%)	Target (Monthly):	219
Current SD Rate FYTD:	93% (Down from 95%)	Detections Target:	0%
		Sanct Detect Target:	0%

Drugs Supply Class A Offences



Financial Year to Date Compared to Same Period in last Financial Year

Supply

Current Offences FYTD 71% Up

Current Detection Rate NA

Current SD Rate FYTD: 13% (Up from 11%)

Monthly Average:

Target (Monthly):

Detections Target:

Sanct Detect Target:

20

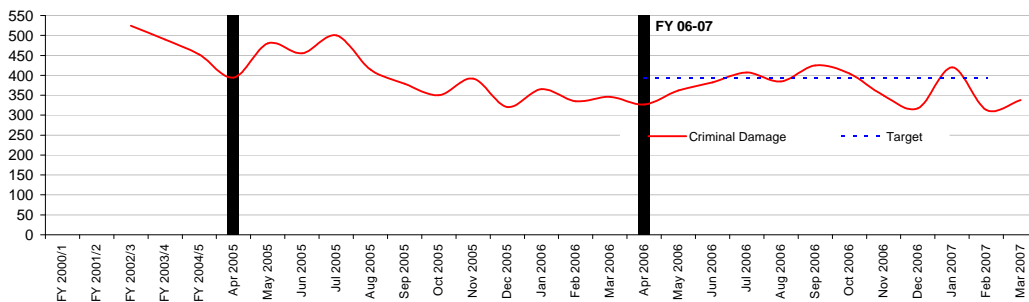
12

0%

0%

Criminal Damage Offences

FY 05-06



Financial Year to Date Compared to Same Period in last Financial Year

Current Offences FYTD:-6% Down

Current Detection Rate | 13% (Down from 109%)

Current SD Rate FYTD: 21% (Up from 18%)

Monthly Average:

Target Offences (Monthly):

Sanct Detections Target

Detections Target:

369

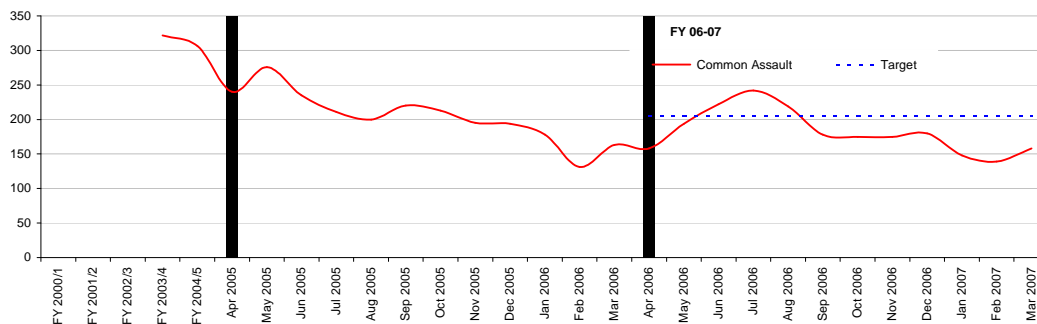
394

0%

0%

Common Assault Offences

FY 05-06



Financial Year to Date Compared to Same Period in last Financial Year

Current Offences FYTD:-11% Down

Current Detection Rate | 21% (Down from 104%)

Current SD Rate FYTD: 27% (Up from 2%)

Monthly Average:

Target Offences (Monthly):

Sanct Detections Target

Detections Target:

182

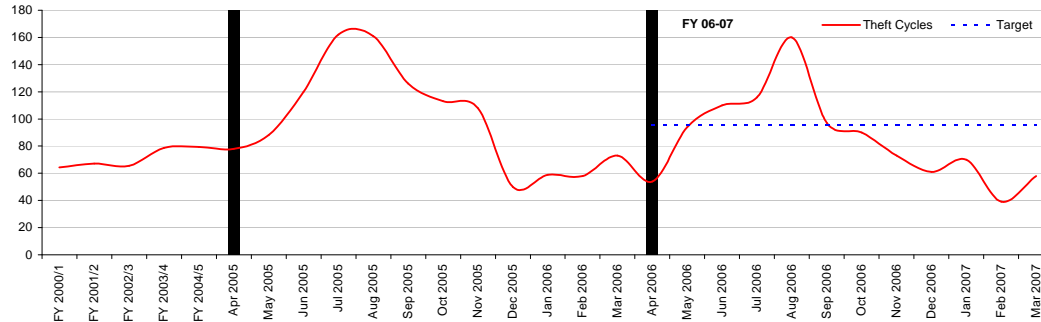
205

0%

0%

Theft Cycle Offences

FY 05-06



Financial Year to Date Compared to Same Period in last Financial Year

Current Offences FYTD:-15% Down

Current Detection Rate | 2% (Down from 109%)

Current SD Rate FYTD: 27% (Up from 17%)

Monthly Average:

Target Offences (Monthly):

Sanct Detections Target

Detections Target:

85

96

0%

0%

2006 - 2007
Abstractions per Month

Date	Brixton			Kennington			Streatham			Totals		
	Insp	PS	PC	Insp	PS	PC	Insp	PS	PC	Insp	PS	PC
April	0	16	111	4	13	114	1	9	76	5	38	301
May	8	16	121	4	20	160	4	12	112	16	48	393
June	8	23	180	3	14	167	7	21	154	18	58	501
July	2	21	128	3	11	139	3	18	110	5	32	267
August	6	41	245	6	31	212	11	25	193	23	97	650
September	1	5	71	0	19	78	2	8	67	3	32	216
October	0	9	65	2	4	66	1	10	80	3	23	211
November	6	26	158	7	20	170	7	17	132	20	63	460
December	5	26	178	10	32	239	5	28	191	20	86	608
January	1	20	94	3	23	143	2	19	110	6	62	347
February	4	34	164	2	29	121	1	18	90	7	81	375
March	7	26	156	9	20	124	1	13	82	17	59	362

Borough Workforce Targets – Police officers

Brixton 278

Kennington 288

Streatham 206

Pan Borough 150

Financial Year To Date Crime Performance

	FY 2007 to March (ytd)	FY 2006 to March (ytd)	Difference	% Change
Number of Offences	Lambeth	Lambeth		
Total Crimes	38,868	41,968	-3,100	-7.4%
Homicide	15	7	8	114.3%
Violence Against the Person (Total)	8,344	8,991	-647	-7.2%
Rape	127	139	-12	-8.6%
Other Sexual	341	438	-97	-22.1%
Robbery (Total)	2,911	2,998	-87	-2.9%
Robbery (Person)	2,674	2,759	-85	-3.1%
Robbery (Business)	237	239	-2	-0.8%
Burglary (Total)	3,685	3,884	-199	-5.1%
Burglary Residential	2,774	2,834	-60	-2.1%
Burglary Non-Residential	911	1,050	-139	-13.2%
Gun Enabled Crime	251	272	-21	-7.7%
Motor Vehicle Crime	4,189	4,618	-429	-9.3%
Domestic Crime	2,450	2,642	-192	-7.3%
Racist Crime	317	315	2	0.6%
Homophobic Crime	84	102	-18	-17.6%

March 2007		Offences		Sanctioned Detections				Non-Sanctioned Detections				Detections & Detection Rate				Persons Accused	
		MPS Total	Lambeth	MPS Total	Lambeth	MPS Total	Lambeth	MPS Total	Lambeth	MPS Total	Lambeth	MPS Total	Lambeth	MPS Total	Lambeth		
Violence Against the Person		14952	658	4858	32.49%	216	32.83%	40	0.27%	0	0.00%	4898	32.76%	216	32.83%	2787	114
	Murder	8	0	7	87.50%	0	0.00%	2	25.00%	0	0.00%	9	112.50%	0	0.00%	17	0
	GBH	396	31	134	33.84%	13	41.94%	1	0.25%	0	0.00%	135	34.09%	13	41.94%	110	9
	ABH	5762	248	1482	25.72%	43	17.34%	19	0.33%	0	0.00%	1501	26.05%	43	17.34%	880	22
	Common Assault	3627	140	696	19.19%	14	10.00%	12	0.33%	0	0.00%	708	19.52%	14	10.00%	372	6
	Offensive Weapon	595	40	558	93.78%	43	107.50%	0	0.00%	0	0.00%	558	93.78%	43	107.50%	356	26
	Harassment	3703	147	1593	43.02%	78	53.06%	0	0.00%	0	0.00%	1593	43.02%	78	53.06%	877	41
	Other Violence	861	52	388	45.06%	25	48.08%	6	0.70%	0	0.00%	394	45.76%	25	48.08%	175	10
Sexual Offences		765	49	258	33.73%	28	57.14%	6	0.78%	2	4.08%	264	34.51%	30	61.22%	203	22
	Rape	190	10	82	43.16%	1	10.00%	4	2.11%	2	20.00%	86	45.26%	3	30.00%	72	1
	Other Sexual	575	39	176	30.61%	27	69.23%	2	0.35%	0	0.00%	178	30.96%	27	69.23%	131	21
Robbery		3705	218	688	18.57%	50	22.94%	1	0.03%	0	0.00%	689	18.60%	50	22.94%	431	44
	Personal Property	3394	192	648	19.09%	48	25.00%	1	0.03%	0	0.00%	649	19.12%	48	25.00%	392	42
	Business Property	311	26	40	12.86%	2	7.69%	0	0.00%	0	0.00%	40	12.86%	2	7.69%	39	2
Burglary		8079	280	861	10.66%	28	10.00%	2	0.02%	0	0.00%	863	10.68%	28	10.00%	453	21
	Burglary in a Dwelling	4983	212	510	10.23%	10	4.72%	0	0.00%	0	0.00%	510	10.23%	10	4.72%	207	6
	Burglary in Other Buildings	3096	68	351	11.34%	18	26.47%	2	0.06%	0	0.00%	353	11.40%	18	26.47%	246	15
Theft and Handling		30768	1156	3407	11.07%	184	15.92%	8	0.03%	0	0.00%	3415	11.10%	184	15.92%	2253	63
Motor Vehicle Crime		10462	359	657	6.28%	113	31.48%	0	0.00%	0	0.00%	657	6.28%	113	31.48%	321	11
	Theft/Taking of M/V	3007	134	237	7.88%	6	4.48%	0	0.00%	0	0.00%	237	7.88%	6	4.48%	178	5
	Theft from a Vehicle	7455	225	420	5.63%	107	47.56%	0	0.00%	0	0.00%	420	5.63%	107	47.56%	143	6
	M/V Interference & Tampering	271	12	29	10.70%	0	0.00%	0	0.00%	0	0.00%	29	10.70%	0	0.00%	17	0
Theft from Person		3571	149	120	3.36%	2	1.34%	0	0.00%	0	0.00%	120	3.36%	2	1.34%	86	2
	Snatches	957	61	50	5.22%	2	3.28%	0	0.00%	0	0.00%	50	5.22%	2	3.28%	32	2
	Picking Pockets etc	2614	88	70	2.68%	0	0.00%	0	0.00%	0	0.00%	70	2.68%	0	0.00%	54	0
	Theft from Shops	3243	60	1795	55.35%	33	55.00%	7	0.22%	0	0.00%	1802	55.57%	33	55.00%	1296	24
	Theft/Taking of Pedal Cycles	1353	58	28	2.07%	2	3.45%	0	0.00%	0	0.00%	28	2.07%	2	3.45%	18	2
	Other Theft	11620	501	537	4.62%	13	2.59%	1	0.01%	0	0.00%	538	4.63%	13	2.59%	358	12
	Handling Stolen Goods	248	17	241	97.18%	21	123.53%	0	0.00%	0	0.00%	241	97.18%	21	123.53%	157	12
Fraud or Forgery		2698	79	749	27.76%	42	53.16%	1	0.04%	0	0.00%	750	27.80%	42	53.16%	382	17
	Counted per Victim	1496	33	401	26.80%	20	60.61%	0	0.00%	0	0.00%	401	26.80%	20	60.61%	154	8
	M/V Interference & Tampering	1202	46	348	28.95%	22	47.83%	1	0.08%	0	0.00%	349	29.03%	22	47.83%	228	9
Criminal Damage		9444	343	1339	14.18%	50	14.58%	8	0.08%	0	0.00%	1347	14.26%	50	14.58%	800	27
	Criminal Damage to a Dwelling	2329	101	298	12.80%	10	9.90%	1	0.04%	0	0.00%	299	12.84%	10	9.90%	192	7
	Criminal Damage to Other Bldg	1096	44	304	27.74%	15	34.09%	2	0.18%	0	0.00%	306	27.92%	15	34.09%	167	8
	Criminal Damage to M/V	4515	144	395	8.75%	15	10.42%	2	0.04%	0	0.00%	397	8.79%	15	10.42%	254	6
	Other Criminal Damage	1504	54	342	22.74%	10	18.52%	3	0.20%	0	0.00%	345	22.94%	10	18.52%	187	6
Drugs		5349	467	5375	100.49%	467	100.0%	23	0.43%	0	0.00%	5398	100.92%	467	100.0%	1872	187
	Drug Trafficking	394	39	370	93.91%	33	84.62%	0	0.00%	0	0.00%	370	93.91%	33	84.62%	263	26
	Possession of Drugs	4919	427	4969	101.02%	431	100.94%	23	0.47%	0	0.00%	4992	101.48%	431	100.94%	1589	160
	Other Drug Offences	36	1	36	100.00%	3	300.00%	0	0.00%	0	0.00%	36	100.00%	3	300.00%	20	1
Other Notifiable Offences		983	66	679	69.07%	48	72.73%	3	0.31%	0	0.00%	682	69.38%	48	72.73%	462	23
	Going Equipped	75	6	67	89.33%	3	50.00%	1	1.33%	0	0.00%	68	90.67%	3	50.00%	51	4
	Other Notifiable	908	60	612	67.40%	45	75.00%	2	0.22%	0	0.00%	614	67.62%	45	75.00%	411	19
TOTAL NOTIFIABLE OFFENCES		76743	3316	18214	23.73%	1113	33.56%	92	0.12%	2	0.06%	18306	23.85%	1115	33.62%	9643	518

Sanction Detections = charge, caution, summon, TICs & FPNs, cannabis warning

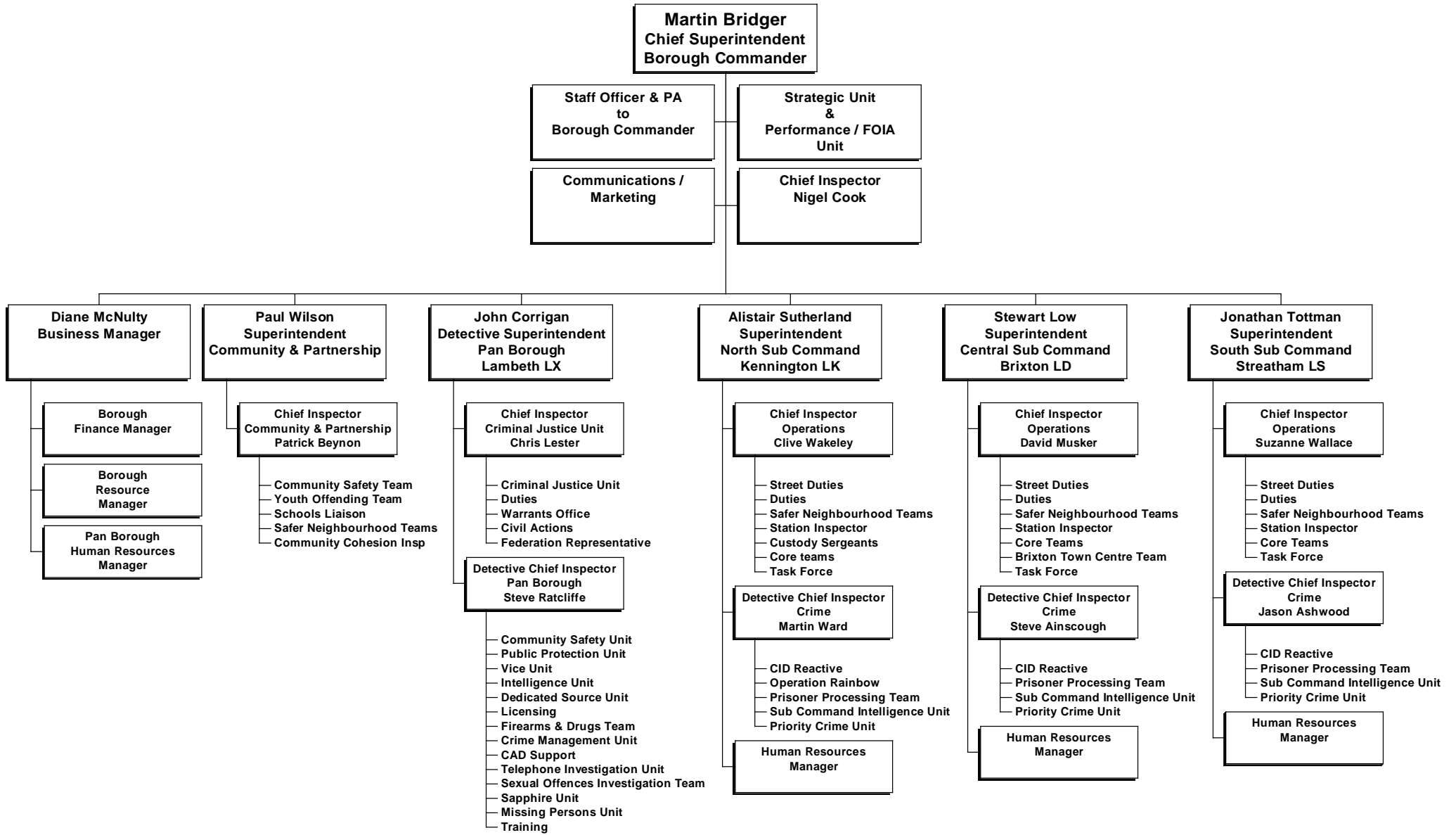
Non Sanctioned Detections = authority detections

Detections = Sanction Detections & Non Sanction Detections

*Motor Vehicle Crime = theft/taking of M/V + theft from a vehicle

**Theft Person = snatches + picking pockets

Lambeth Borough Police Structure



Glossary

‘Sanctioned’ and ‘Non Sanctioned’ Detection Definitions

A ‘Sanctioned’ Detection is where an allegation has resulted in either a charge, a summons, a caution, a formal warning, a youth reprimand or an offence being taken into consideration i.e. in addition to the charge for which the person is before a court, other offences can be admitted by the defendant and the court asked to take these offences into consideration in passing sentence.

A ‘Non-Sanctioned’ Detection is where a crime has been committed and recorded and: A suspect has been identified and interviewed by a police officer or, if an interview is not necessary to determine guilt, had at least been informed that the offence has been detected.

There must be sufficient evidence to charge the suspect with the crime.

If the victim subsequently refuses to give evidence, then a reason for this decision has been documented.

In the case where there is an identifiable victim, the victim must have been informed that the crime has been detected or in the case of a child, the parent or guardian has been informed.

Total Robbery

Combination of Robbery and Theft-Snatch

Robbery

Theft where force or threat of force is made to a person at the time or immediately before in order to steal

Theft - Snatch

Theft where force is applied to the object carried by a person ie snatching an handbag or phone from a person

Motor Vehicle Crime

Combination of theft from vehicles or taking of vehicles with the owners consent or theft of a motor vehicle

Gun Enabled Crime

A crime which is a specific listed offence ie assaults, thefts or sexual offences whilst in possession of a firearm or imitation firearm and the firearm has been seen or used

ABH

Assault where cuts bruises and other types of minor injuries are sustained

GBH

Serious assault resulting in permanent injury broken bones

TNO Total Notifiable Offences

All notifiable offences which are recorded by police and a crime report is generated

I-Call

Police graded response to a call received in the Police Control Room. Immediate response within 12mins. For incidents where a suspect is still on scene/nearby or immediate danger is perceived

CAD

Computer aided dispatch which is the computer system used within Metropolitan Police Control rooms to record incidents