

CPCG June 2007

Lambeth Police Report

Superintendent Stewart Low

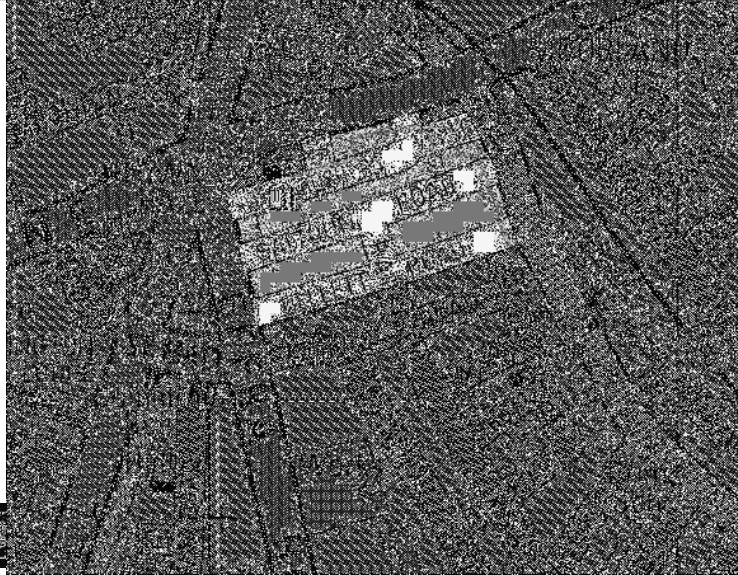


5th June 2007

FYTD Lambeth Crime Figures

Lambeth	FY 2007 to Apr (ytd)	FY 2006 to Apr(ytd)	Difference	% Change
Total Crimes	3,361	2,766	595	21.5%
Homicide	2	2	0	0.0%
Violence Against the Person	691	584	107	18.3%
Rape	11	13	-2	-15.4%
Other Sexual	24	27	-3	-11.1%
Robbery (Total)	234	200	34	17.0%
Robbery (Person)	210	182	28	15.4%
Robbery (Business)	24	18	6	33.3%
Burglary (Total)	288	314	-26	-8.3%
Burglary Residential	209	221	-12	-5.4%
Burglary Non-Residential	79	93	-14	-15.1%
Gun Enabled Crime	47	16	31	193.8%
Motor Vehicle Crime	457	258	199	77.1%
Domestic Crime	183	182	1	0.5%
Racist Crime	20	16	4	25.0%
Homophobic Crime	6	3	3	100.0%

Brixton Dispersal Zone



Recent Incidents



Murder Investigations Update 2006

- **Khizar Hayat & Hamidullah Hamidi** On 27/04/2006 a male threw a petrol bomb into the venue. Trial date set for 14th July 2007 at CCC.
- **Simon Monteiro** Victim died on 11/05/2006 single stab wound to chest in Stockwell Road. Enqs Continue to identify a suspect.
- **Mark Murphy** On 22/08/2006 at 24, Bournevale Road, London, SW16 Victim stabbed. 1 Suspect charged. Trial date set for 6th June 2007 at CCC

Murder Investigations Update 2006

- **Anton Smith** shot 4 times 20/10/2006 rear of 207 Clapham Park Rd 2 Suspects charged with murder Current Trial date set 18th June 2007.
- **Jason Dawes** 11/12/2006 hit by car found dead with a number of stab wounds Cold Harbour Lane. Suspect charged remanded in custody awaits trial CCC November 2007.

Murder Investigations Update 2007

- **Catherine Marlow** 13/01/2007 66 South Lambeth Road, SW8
- Matthew Fagan, charged and appeared at Camberwell Green Magistrates Court on 29/1/07 and was remanded in custody to the Central Criminal Court on 7th May,2007.
- **Michael Edwards** 21/01/2007 Hart House,St Martins Estate, Kennington stabbed Suspect awaiting trial CCC Jan 2008
- **James Smarrt – Ford** 03/02/2007 Shot at Streatham Ice Rink. Two arrests made suspects on bail enqs continue.
- Many witnesses have still not come forward from the Ice rink.



Murder Investigations Update 2007

- **William Cox** 14/02/2007 shot at his house in Fenwick Place. No arrests to date Enquiries Continue.
- **Stephen O'Neill** aged 54 years 03/04/2007 32 Orsett Street,SE11, assaulted causing fatal injuries. 2 suspects arrested case subject to review.
- **Alfred Christopher Liverpool**, male IC3 27/04/2007 Flat 6 Clarence House Rushcroft Road SW2 murder by shooting. No suspects at this stage. No motive at this stage.



Murder Investigations Update 2007

- **Mohamed Nateez Abdulraheem AKA Rizmi Raheem**
- Sri Lankan Male aged 31 years 02/06/2007 found trussed up and murdered at 5 Sardeson House, SE27. Police still at scene searching for forensics. Enqs continue.



Questions ?





Community Police Consultative Group for Lambeth

Monthly Police Report

CPCGLambeth

June 2007

(Starting from April Data)

Financial Year 2007-2008

**The CPCG report will be produced on a Monthly basis by the Lambeth Police
Performance & Review Unit**

Not Protectively Marked



INDEX

LAMBETH BOROUGH

Page 1	CAD Achievements
Pages 2-6	Classified and Confirmed Offences, Detections for: Robbery Burglary Motor Vehicle Offences Gun Enabled Offences Domestic Violence Offences Homophobic and Racial Offences Violent Crime Total Notifiable Offences Drug Offences Criminal Damages Common Assault Theft of Pedal Cycle offence
Page 7	Aid Requirements / Performance FYTD
Page 8	Crime Monthly Performance
Page 9	Organogram
Page 10	Glossary

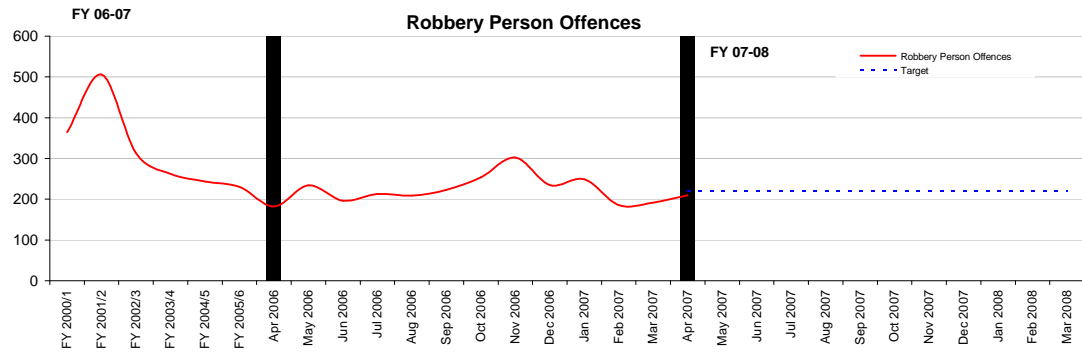
Stops Data to be part of report on a Quarterly basis

Protective Marking	Not Protectively Marked
FOIA Exemption	None
Publication Scheme	No
Title and Version	Lambeth Community and Police Consultative Group Monthly Report
Purpose	To Inform Relevant Staff and Community of Performance
Relevant To	All Staff on Lambeth BOCU and community members
Author and warrant / pay number	Trevor Peplow PC 394 LX
OCU / Branch / Unit	Lambeth Police Performance and Review Unit @ Frank O'Neill House
Summary	Report is produced on a monthly basis
Date Created	1st June 2007
Review Date	Monthly as Required

Call Type	Sector / Month	Months												
		Apr 2006	May 2006	Jun 2006	Jul 2006	Aug 2006	Sep 2006	Oct 2006	Nov 2006	Dec 2006	Jan 2007	Feb 2007	Mar 2007	
I CALLS	Kennington	77%												
	Kennington Average YTD	77%												
	Brixton	73%												
	Brixton Average YTD	73%												
	Streatham	71%												
	Streatham Average YTD	71%												
	Borough Average p/m	74%												
Borough Average YTD	74%													

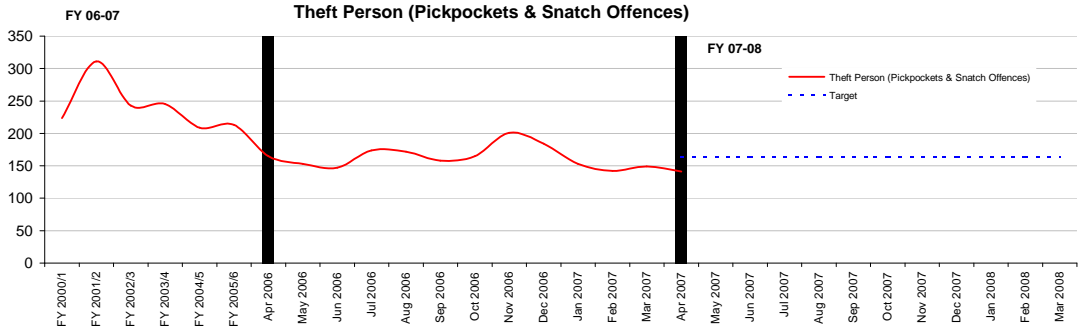
CAD Achievements for Lambeth SubCommands





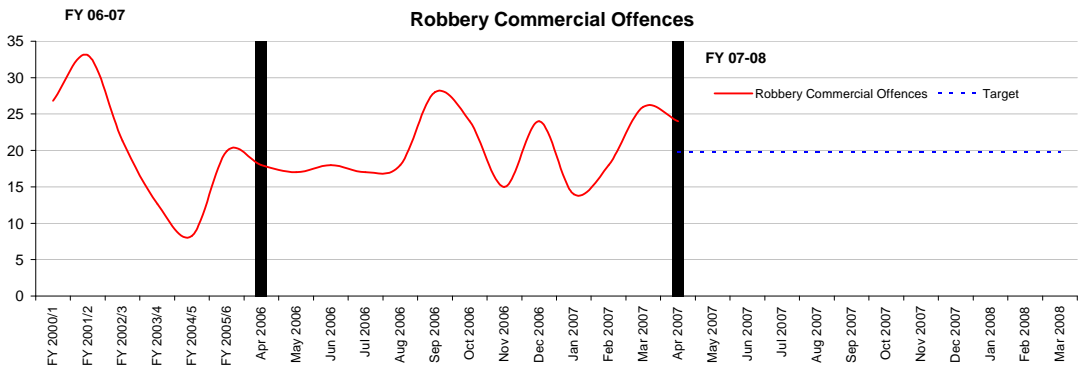
Financial Year to Date Compared to Same Period in last Financial Year

Current Offences FYTD:	15% Up	Monthly Average:	210
Current Detection Rate FYTD:	8% (Up from 6%)	Target Offences (Monthly):	220.6
Current SD Rate FYTD:	8% (Up from 6%)	Sanct Detections Target:	14%
		Detections Target:	0%



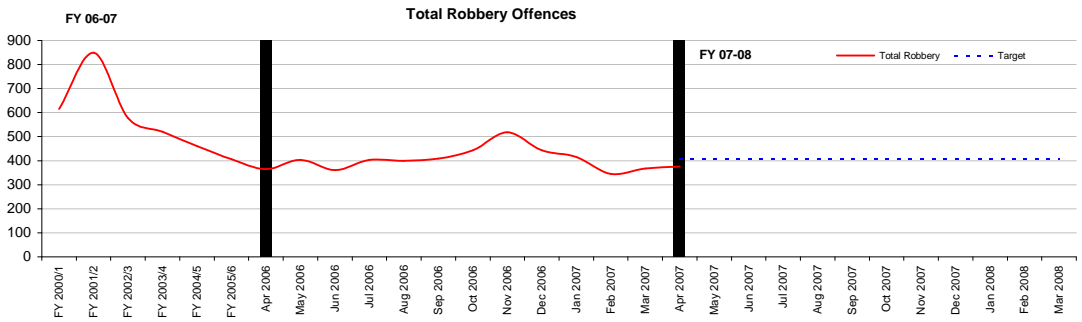
Financial Year to Date Compared to Same Period in last Financial Year

Current Offences FYTD:	-15% Down	Monthly Average:	141
Current Detection Rate FYT:	1% (Up from 1%)	Target Offences (Monthly):	164
Current SD Rate FYTD:	1% (Up from 1%)	Sanct Detections Target:	0.0
		Detections Target:	0%



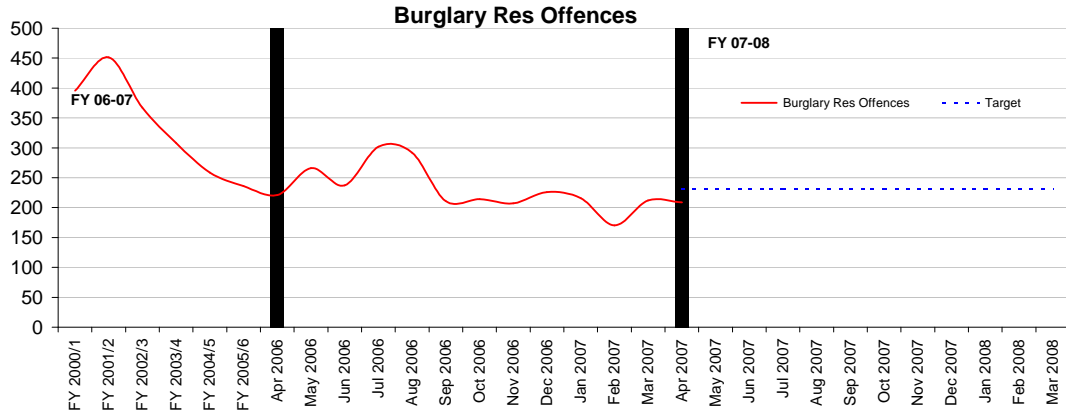
Financial Year to Date Compared to Same Period in last Financial Year

Current Offences FYTD:	33% Up	Monthly Average:	24
Current Detection Rate FYT:	8% (Up from 6%)	Target Offences (Monthly):	20
Current SD Rate FYTD:	8% (Up from 6%)	Sanct Detections Target:	0.0
		Detections Target:	0%



Financial Year to Date Compared to Same Period in last Financial Year

Current Offences FYTD:	3% Up	Monthly Average:	375
Current Detection Rate FYT:	5% (Up from 4%)	Target (Monthly):	406
Current SD Rate FYTD:	5% (Up from 4%)	Detections Target:	0.0
		Sanct Detect Target:	14%



Financial Year to Date Compared to Same Period in last Financial Year

Current Offences FYTD: -5% Down

Monthly Average:

209

Target (Monthly):

231

Current Detection Rate FYT 7% (Down from 7%)

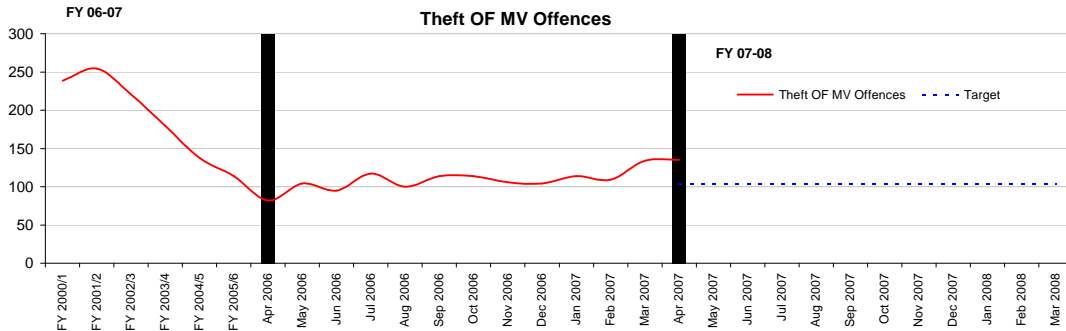
Detections Target:

0.0

Current SD Rate FYTD: 7% (Up from 6%)

Sanct Detect Target:

20%



Financial Year to Date Compared to Same Period in last Financial Year

Current Offences FYTD: 65% Up

Monthly Average:

135

Target (Monthly):

103

Current Detection Rate FYT 10% (Up from 6%)

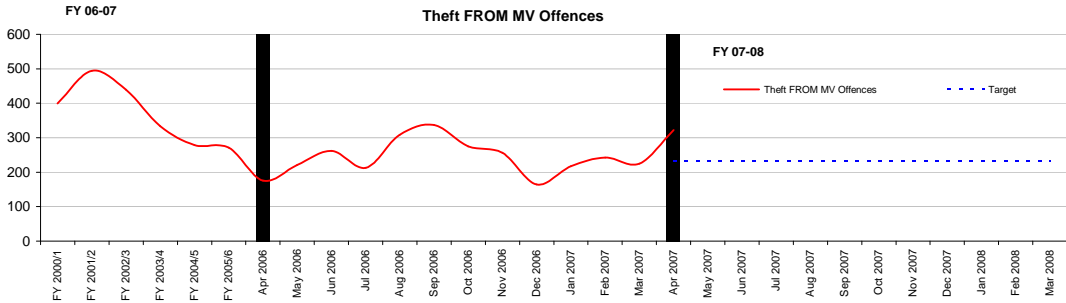
Detections Target:

0.0

Current SD Rate FYTD: 10% (Up from 6%)

Sanct Detect Target:

0%



Financial Year to Date Compared to Same Period in last Financial Year

Current Offences FYTD: 83% Up

Monthly Average:

322

Target (Monthly):

233

Current Detection Rate FY 11% (Up from 3%)

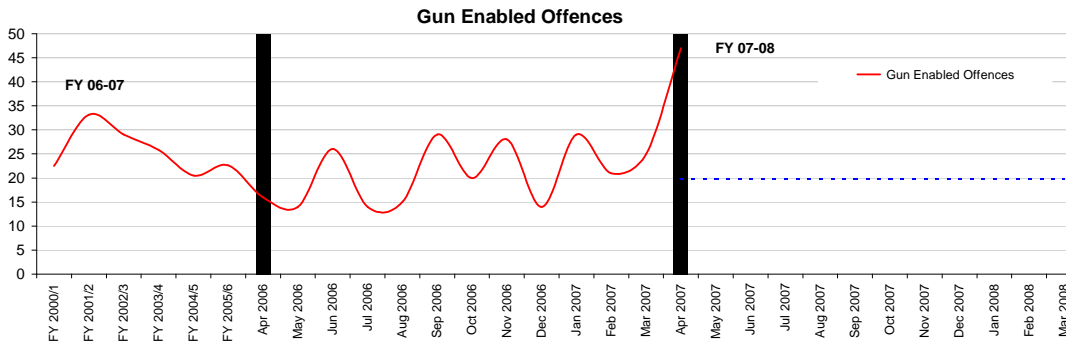
Detections Target:

0.0

Current SD Rate FYTD: 11% (Up from 3%)

Sanct Detect Target:

0%



Financial Year to Date Compared to Same Period in last Financial Year

Current Offences FYTD: 194% Up

Monthly Average:

47

Target (Monthly):

20

Current Detection Rate FYT 4% (Down from 13%)

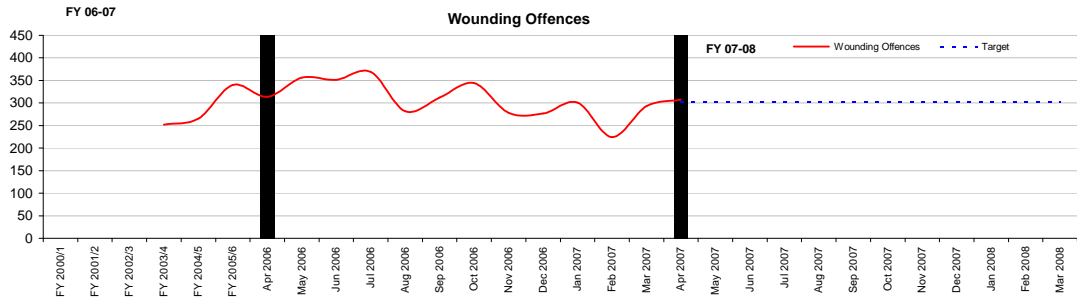
Detections Target:

0.0

Current SD Rate FYTD: 4% (Down from 13%)

Sanct Detect Target:

0%



Financial Year to Date Compared to Same Period in last Financial Year

Current Offences FYTD: -2% Down

Monthly Average:

307

Target (Monthly):

302

Current Detection Rate FYT 21% (Down from 30%)

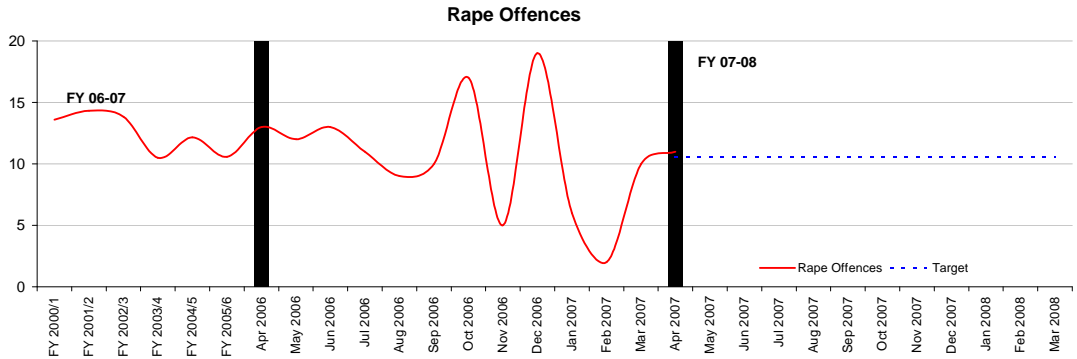
Detections Target:

0.0

Current SD Rate FYTD: 21% (Up from 19%)

Sanct Detect Target:

0%



Financial Year to Date Compared to Same Period in last Financial Year

Current Offences FYTD: -15% Down

Monthly Average:

11

Target (Monthly):

11

Current Detection Rate FYT 18% (Up from 15%)

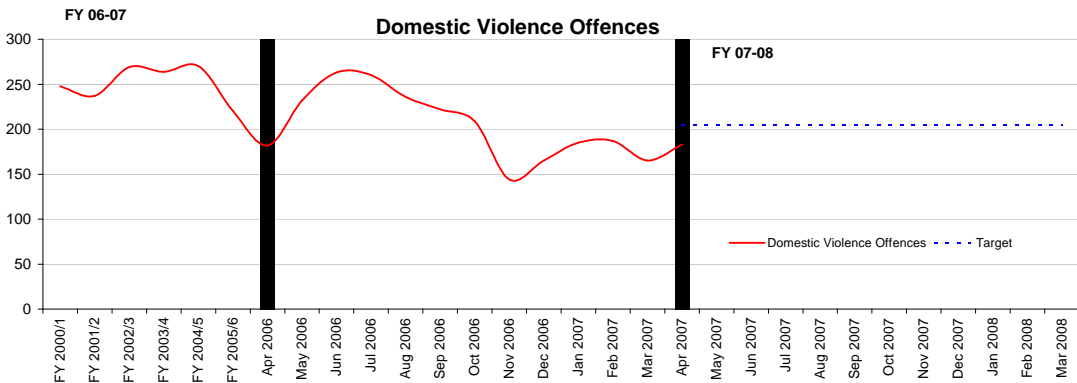
Detections Target:

0.0

Current SD Rate FYTD: 18% (Up from 15%)

Sanct Detect Target:

30%



Financial Year to Date Compared to Same Period in last Financial Year

Current Offences FYTD: 1% Up

Monthly Average:

183

Target (Monthly):

204

Current Detection Rate FY 29% (Down from 44%)

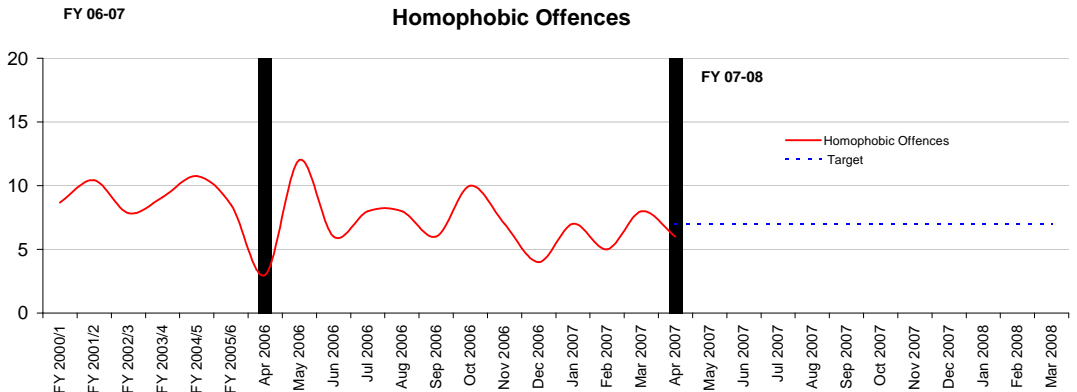
Detections Target:

0%

Current SD Rate FYTD: 29% (Down from 29%)

Sanct Detect Target:

40%



Financial Year to Date Compared to Same Period in last Financial Year

Current Offences FYTD: 100% Up

Monthly Average:

6

Target (Monthly):

7

Current Detection Rate FY 17% (Up from 0%)

Detections Target:

0%

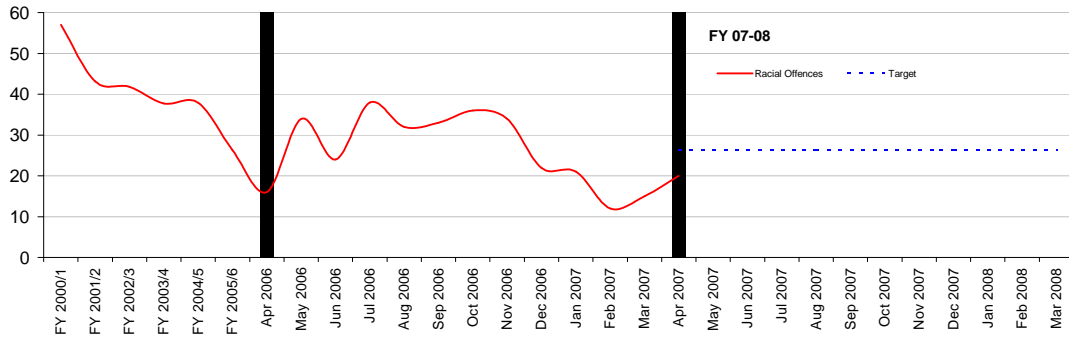
Current SD Rate FYTD: 17% (Up from 0%)

Sanct Detect Target:

33%

FY 06-07

Racial Offences



Financial Year to Date Compared to Same Period in last Financial Year

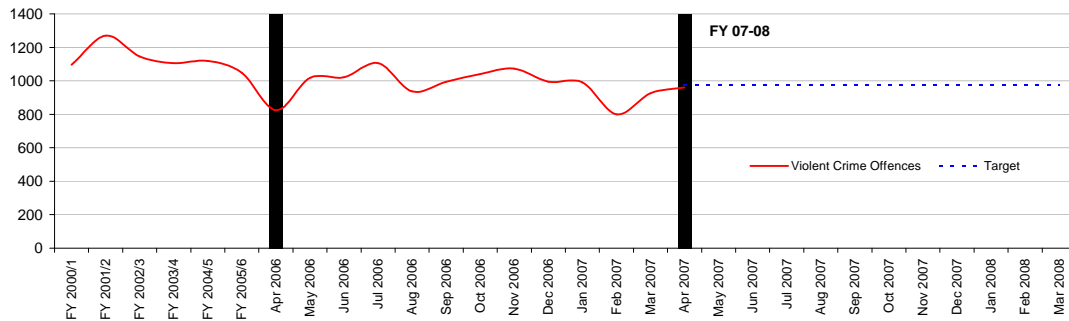
Current Offences FYTD: 25% Up

Current Detection Rate FY 55% (Up from 25%)
 Current SD Rate FYTD: 55% (Up from 19%)

Monthly Average: 20
 Target (Monthly): 26
 Detections Target: 0%
 Sanct Detect Target: 36%

FY 06-07

Violent Offences



Financial Year to Date Compared to Same Period in last Financial Year

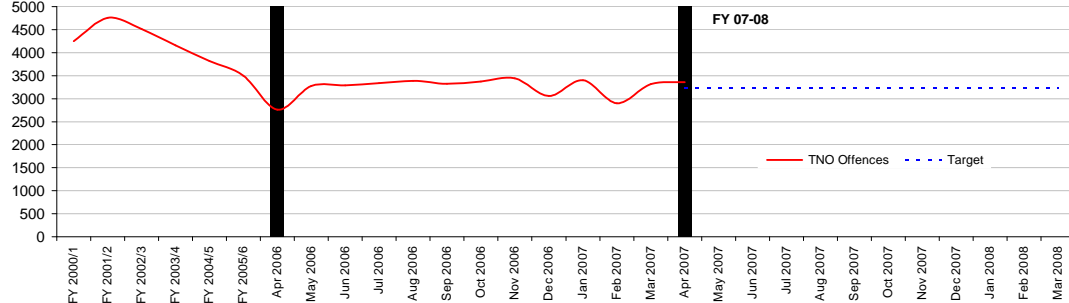
Current Offences FYTD: 17% Up

Current Detection Rate FY 23% (Up from 23%)
 Current SD Rate FYTD: 23% (Up from 18%)

Monthly Average: 960
 Target (Monthly): 977
 Detections Target: 0%
 Sanct Detect Target: 0%

FY 06-07

TNO Offences



Financial Year to Date Compared to Same Period in last Financial Year

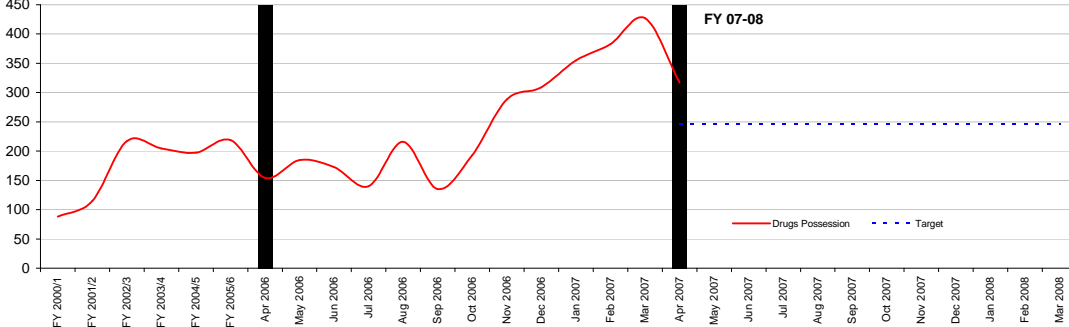
Current Offences FYTD: 22% Up

Current Detection Rate FY 23% (Up from 20%)
 Current SD Rate FYTD: 23% (Up from 17%)

Monthly Average: 3361
 Target (Monthly): 3239
 Detections Target: 0%
 Sanct Detect Target: 24%

FY 06-07

Drugs Possession Offences



Financial Year to Date Compared to Same Period in last Financial Year

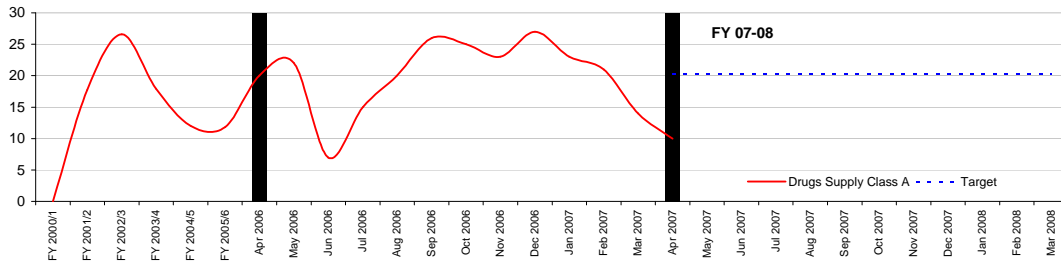
Current Offences FYTD: 106% Up

Current Detection Rate FY 90% (Up from 82%)
 Current SD Rate FYTD: 90% (Up from 81%)

Monthly Average: 317
 Target (Monthly): 247
 Detections Target: 0%
 Sanct Detect Target: 0%

FY 06-07

Drugs Supply Class A Offences



Financial Year to Date Compared to Same Period in last Financial Year

Supply

Current Offences FYTD: -50% Down

Current Detection Rate FY NA

Current SD Rate FYTD: 8% (Down from 10%)

Monthly Average:

Target (Monthly):

Detections Target:

Sanct Detect Target:

10

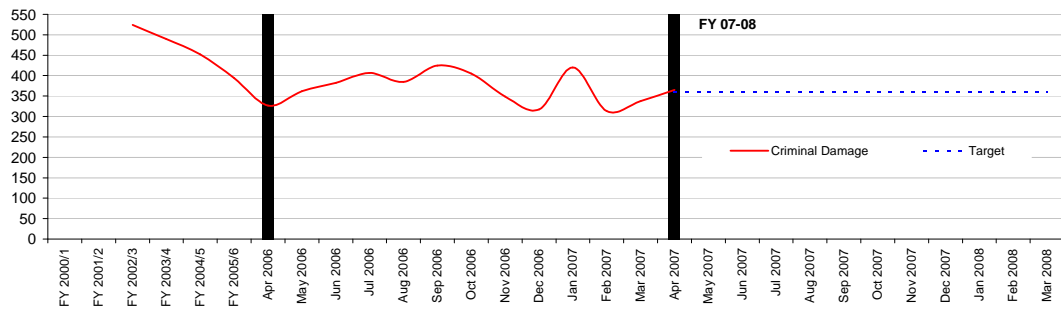
20

0%

0%

FY 06-07

Criminal Damage Offences



Financial Year to Date Compared to Same Period in last Financial Year

Current Offences FYTD: 12% Up

Current Detection Rate FY 8% (Down from 94%)

Current SD Rate FYTD: 22% (Up from 18%)

Monthly Average:

Target Offences (Monthly):

Sanct Detections Target

Detections Target:

365

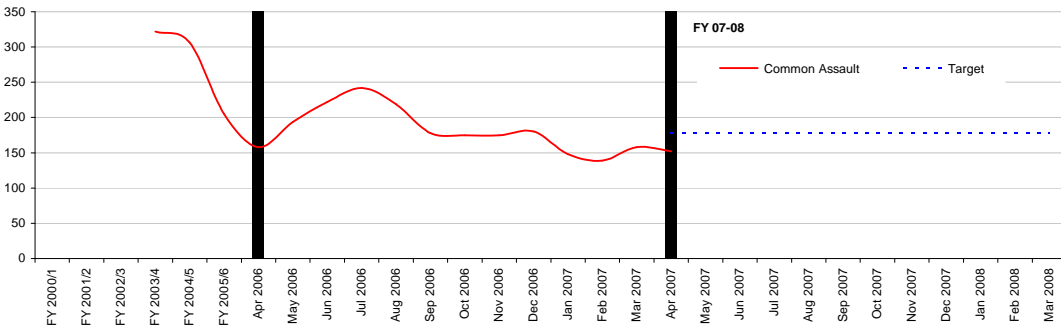
358

0%

0%

FY 06-07

Common Assault Offences



Financial Year to Date Compared to Same Period in last Financial Year

Current Offences FYTD: -4% Down

Current Detection Rate FY 22% (Down from 117%)

Current SD Rate FYTD: 0% (Down from 2%)

Monthly Average:

Target Offences (Monthly):

Sanct Detections Target

Detections Target:

152

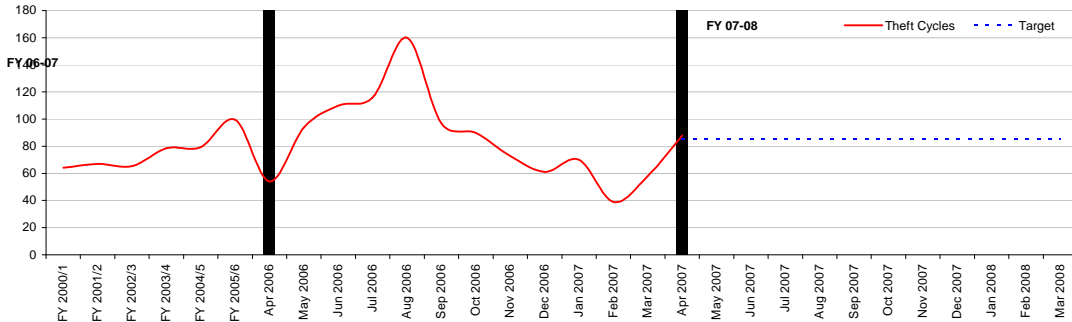
177

0%

0%

FY 06-07

Theft Cycle Offences



Financial Year to Date Compared to Same Period in last Financial Year

Current Offences FYTD: 63% Up

Current Detection Rate FY 0% (Down from 0%)

Current SD Rate FYTD: 8% (Up from 6%)

Monthly Average:

Target Offences (Monthly):

Sanct Detections Target

Detections Target:

88

85

0%

0%

Abstractions per Month
2007 - 2008

Date	Brixton			Kennington			Streatham			Totals		
	Insp	PS	PC	Insp	PS	PC	Insp	PS	PC	Insp	PS	PC
April	6	45	206	12	51	258	5	36	173	23	132	637

Borough Workforce Targets – Police officers
Brixton 278
Kennington 288
Streatham 206
Pan Borough 150

Financial Year To Date Crime Performance

	FY 2007 to Apr (ytd)	FY 2006 to Apr(ytd)	Difference	% Change
Number of Offences	Lambeth	Lambeth		
Total Crimes	3,361	2,766	595	21.5%
Homicide	2	2	0	0.0%
Violence Against the Person (Total)	691	584	107	18.3%
Rape	11	13	-2	-15.4%
Other Sexual	24	27	-3	-11.1%
Robbery (Total)	234	200	34	17.0%
Robbery (Person)	210	182	28	15.4%
Robbery (Business)	24	18	6	33.3%
Burglary (Total)	288	314	-26	-8.3%
Burglary Residential	209	221	-12	-5.4%
Burglary Non-Residential	79	93	-14	-15.1%
Gun Enabled Crime	47	16	31	193.8%
Motor Vehicle Crime	457	258	199	77.1%
Domestic Crime	183	182	1	0.5%
Racist Crime	20	16	4	25.0%
Homophobic Crime	6	3	3	100.0%

April 2007		Offences		Sanctioned Detections				Non-Sanctioned Detections				Detections & Detection Rate				Persons Accused	
		MPS Total	Lambeth	MPS Total	Lambeth	MPS Total	Lambeth	MPS Total	Lambeth	MPS Total	Lambeth	MPS Total	Lambeth	MPS Total	Lambeth		
Violence Against the Person		14454	691	4580	31.69%	196	28.36%	0	0.00%	0	0.00%	4580	31.69%	196	28.36%	2659	83
	Murder	12	2	8	66.67%	0	0.00%	0	0.00%	0	0.00%	8	66.67%	0	0.00%	18	0
	GBH	410	21	111	27.07%	6	28.57%	0	0.00%	0	0.00%	111	27.07%	6	28.57%	87	1
	ABH	5737	278	1514	26.39%	54	19.42%	0	0.00%	0	0.00%	1514	26.39%	54	19.42%	885	26
	Common Assault	3468	137	746	21.51%	24	17.52%	0	0.00%	0	0.00%	746	21.51%	24	17.52%	396	8
	Offensive Weapon	514	41	449	87.35%	26	63.41%	0	0.00%	0	0.00%	449	87.35%	26	63.41%	295	13
	Harassment	3478	150	1378	39.62%	61	40.67%	0	0.00%	0	0.00%	1378	39.62%	61	40.67%	801	23
	Other Violence	835	62	374	44.79%	25	40.32%	0	0.00%	0	0.00%	374	44.79%	25	40.32%	177	12
Sexual Offences		684	35	207	30.26%	7	20.00%	0	0.00%	0	0.00%	207	30.26%	7	20.00%	124	2
	Rape	154	11	51	33.12%	2	18.18%	0	0.00%	0	0.00%	51	33.12%	2	18.18%	40	1
	Other Sexual	530	24	156	29.43%	5	20.83%	0	0.00%	0	0.00%	156	29.43%	5	20.83%	84	1
Robbery		3273	234	691	21.11%	18	7.69%	0	0.00%	0	0.00%	691	21.11%	18	7.69%	422	13
	Personal Property	2983	210	579	19.41%	16	7.62%	0	0.00%	0	0.00%	579	19.41%	16	7.62%	375	11
	Business Property	290	24	112	38.62%	2	8.33%	0	0.00%	0	0.00%	112	38.62%	2	8.33%	47	2
Burglary		7627	288	905	11.87%	21	7.29%	1	0.01%	0	0.00%	906	11.88%	21	7.29%	398	18
	Burglary in a Dwelling	4515	209	613	13.58%	14	6.70%	1	0.02%	0	0.00%	614	13.60%	14	6.70%	210	11
	Burglary in Other Buildings	3112	79	292	9.38%	7	8.86%	0	0.00%	0	0.00%	292	9.38%	7	8.86%	188	7
Theft and Handling		28908	1253	2974	10.29%	108	8.62%	0	0.00%	0	0.00%	2974	10.29%	108	8.62%	1998	57
Motor Vehicle Crime		10155	457	596	5.87%	48	10.50%	0	0.00%	0	0.00%	596	5.87%	48	10.50%	277	13
	Theft/Taking of M/V	3049	135	221	7.25%	14	10.37%	0	0.00%	0	0.00%	221	7.25%	14	10.37%	171	10
	Theft from a Vehicle	7106	322	375	5.28%	34	10.56%	0	0.00%	0	0.00%	375	5.28%	34	10.56%	106	3
	M/V Interference & Tampering	245	9	33	13.47%	1	11.11%	0	0.00%	0	0.00%	33	13.47%	1	11.11%	14	0
Theft from Person		3171	141	106	3.34%	2	1.42%	0	0.00%	0	0.00%	106	3.34%	2	1.42%	76	1
	Snatches	806	47	36	4.47%	1	2.13%	0	0.00%	0	0.00%	36	4.47%	1	2.13%	25	1
	Picking Pockets etc	2365	94	70	2.96%	1	1.06%	0	0.00%	0	0.00%	70	2.96%	1	1.06%	51	0
	Theft from Shops	2893	71	1570	54.27%	37	52.11%	0	0.00%	0	0.00%	1570	54.27%	37	52.11%	1172	24
	Theft/Taking of Pedal Cycles	1586	88	23	1.45%	0	0.00%	0	0.00%	0	0.00%	23	1.45%	0	0.00%	20	0
	Other Theft	10634	472	427	4.02%	12	2.54%	0	0.00%	0	0.00%	427	4.02%	12	2.54%	303	9
	Handling Stolen Goods	224	15	219	97.77%	8	53.33%	0	0.00%	0	0.00%	219	97.77%	8	53.33%	136	10
Fraud or Forgery		2454	89	523	21.31%	26	29.21%	13	0.53%	0	0.00%	536	21.84%	26	29.21%	346	11
	Counted per Victim	1349	43	204	15.12%	16	37.21%	13	0.96%	0	0.00%	217	16.09%	16	37.21%	123	3
	M/V Interference & Tampering	1105	46	319	28.87%	10	21.74%	0	0.00%	0	0.00%	319	28.87%	10	21.74%	223	8
Criminal Damage		9520	366	1148	12.06%	32	8.74%	0	0.00%	0	0.00%	1148	12.06%	32	8.74%	686	20
	Criminal Damage to a Dwelling	2330	131	283	12.15%	6	4.58%	0	0.00%	0	0.00%	283	12.15%	6	4.58%	171	4
	Criminal Damage to Other Bldg	1089	33	214	19.65%	8	24.24%	0	0.00%	0	0.00%	214	19.65%	8	24.24%	136	6
	Criminal Damage to M/V	4594	161	344	7.49%	9	5.59%	0	0.00%	0	0.00%	344	7.49%	9	5.59%	207	4
	Other Criminal Damage	1507	41	307	20.37%	9	21.95%	0	0.00%	0	0.00%	307	20.37%	9	21.95%	172	6
Drugs		4992	348	4858	97.32%	317	91.1%	0	0.00%	0	0.00%	4858	97.32%	317	91.1%	1675	115
	Drug Trafficking	448	23	489	109.15%	25	108.70%	0	0.00%	0	0.00%	489	109.15%	25	108.70%	289	18
	Possession of Drugs	4514	317	4343	96.21%	286	90.22%	0	0.00%	0	0.00%	4343	96.21%	286	90.22%	1370	94
	Other Drug Offences	30	8	26	86.67%	6	75.00%	0	0.00%	0	0.00%	26	86.67%	6	75.00%	16	3
Other Notifiable Offences		821	57	520	63.34%	35	61.40%	0	0.00%	0	0.00%	520	63.34%	35	61.40%	407	21
	Going Equipped	51	3	59	115.69%	2	66.67%	0	0.00%	0	0.00%	59	115.69%	2	66.67%	50	0
	Other Notifiable	770	54	461	59.87%	33	61.11%	0	0.00%	0	0.00%	461	59.87%	33	61.11%	357	21
TOTAL NOTIFIABLE OFFENCES		72733	3361	16406	22.56%	760	22.61%	14	0.02%	0	0.00%	16420	22.58%	760	22.61%	8715	340

Sanction Detections = charge, caution, summon, TICs & FPNs, cannabis warning

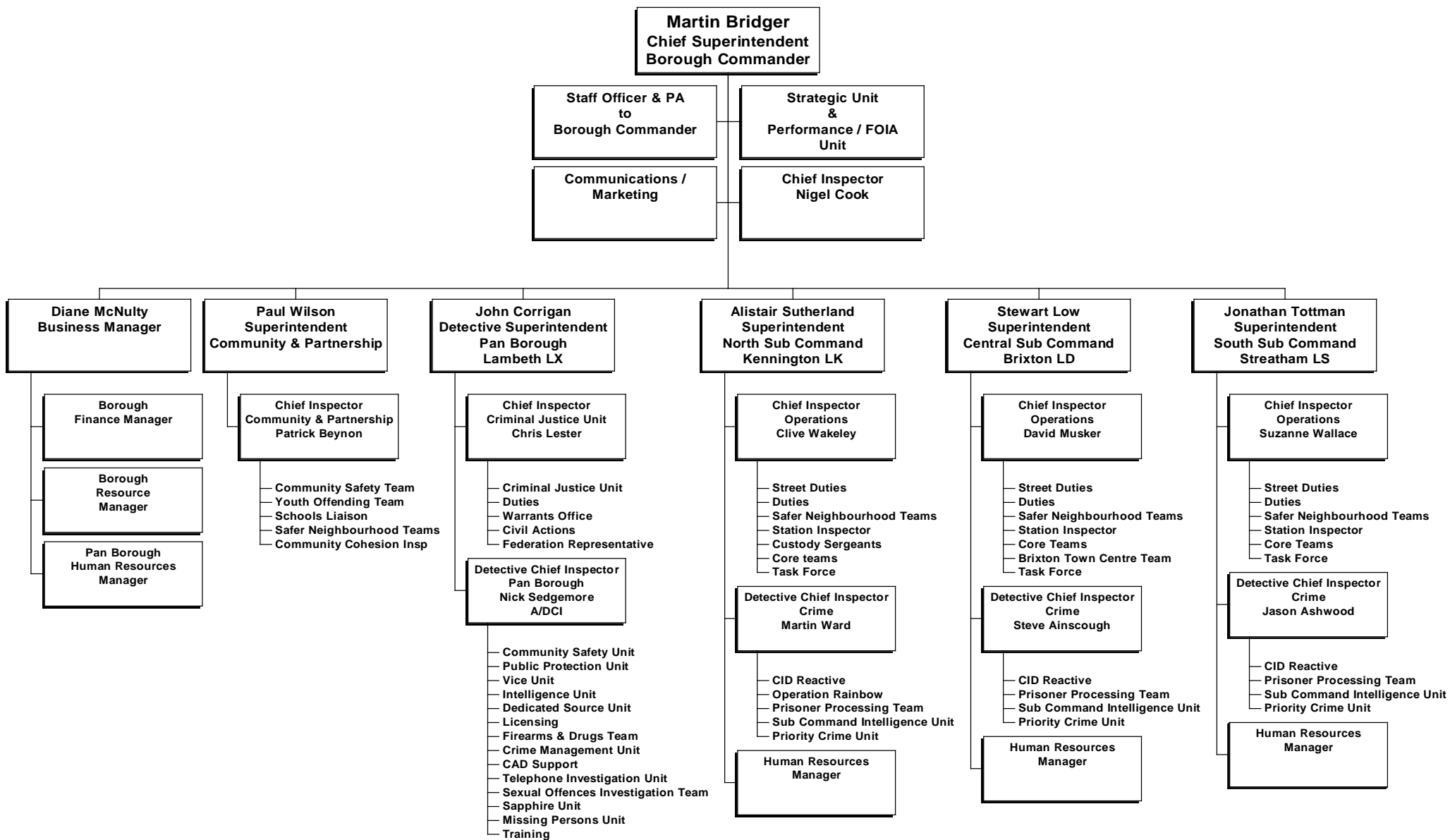
Non Sanctioned Detections = authority detections

Detections = Sanction Detections & Non Sanction Detections

*Motor Vehicle Crime = theft/taking of M/V + theft from a vehicle

**Theft Person = snatches + picking pockets

Lambeth Borough Police Structure



Glossary

‘Sanctioned’ and ‘Non Sanctioned’ Detection Definitions

A ‘Sanctioned’ Detection is where an allegation has resulted in either a charge, a summons, a caution, a formal warning, a youth reprimand or an offence being taken into consideration i.e. in addition to the charge for which the person is before a court, other offences can be admitted by the defendant and the court asked to take these offences into consideration in passing sentence.

A ‘Non-Sanctioned’ Detection is where a crime has been committed and recorded and: A suspect has been identified and interviewed by a police officer or, if an interview is not necessary to determine guilt, had at least been informed that the offence has been detected.

There must be sufficient evidence to charge the suspect with the crime.

If the victim subsequently refuses to give evidence, then a reason for this decision has been documented.

In the case where there is an identifiable victim, the victim must have been informed that the crime has been detected or in the case of a child, the parent or guardian has been informed.

Total Robbery

Combination of Robbery and Theft-Snatch

Robbery

Theft where force or threat of force is made to a person at the time or immediately before in order to steal

Theft - Snatch

Theft where force is applied to the object carried by a person ie snatching an handbag or phone from a person

Motor Vehicle Crime

Combination of theft from vehicles or taking of vehicles with the owners consent or theft of a motor vehicle

Gun Enabled Crime

A crime which is a specific listed offence ie assaults, thefts or sexual offences whilst in possession of a firearm or imitation firearm and the firearm has been seen or used

ABH

Assault where cuts bruises and other types of minor injuries are sustained

GBH

Serious assault resulting in permanent injury broken bones

TNO Total Notifiable Offences

All notifiable offences which are recorded by police and a crime report is generated

I-Call

Police graded response to a call received in the Police Control Room. Immediate response within 12mins. For incidents where a suspect is still on scene/nearby or immediate danger is perceived

CAD

Computer aided dispatch which is the computer system used within Metropolitan Police Control rooms to record incidents