

## **CPCG September 2007**

**Lambeth Police Report**

**Chief Superintendent Sharon Rowe**



4<sup>th</sup> September 2007

## **CPCG September 2007**

- Who is Sharon Rowe
- Role of Borough Commander
- Vision of Policing
- Current performance



## **Who is Sharon Rowe**

- Personal
- Career
- Role of Borough Commander



## **Vision of Policing**

### **A Safe Secure Lambeth**

- Confidence & Trust
- Feeling Safer
- Fewer Victims
- More Detections
- Value for Money
- Professional Team



## Confidence & Trust

Lead: Superintendent Partnership Paul Wilson

- Quality
- Working Together
- 24/7 Policing
- Satisfied service
- Community Engagement
- Contactable & Meet Needs
- Victim Focus

Victim Satisfaction overall service	80%	MPS Avg 76.2%
<u>Confidence in local policing</u>	56%	MPS Avg 56%

## Feeling Safer

Lead: Superintendent Streatham Jonathan Tottman

- Anti Social Behaviour
- Communication
- Neighbourhood Safety
- Safer schools

Public Attitude Survey		
Feeling safe day :	92%	MPS 96%
<u>Feeling safe after dark :</u>	63%	MPS 74%

## **Fewer Victims**

**Lead: Detective Superintendent P/Borough John Corrigan**

- Total Crime
- Volume Crime
- Serious Crime
- Gangs & Organised Crime
- Counter Terrorism

BCS Comparator Crime	-8.0%	Target -2.0%
Total Notifiable Offences	-2.4%	368 Fewer Victims

## **More Detections**

**Lead: Superintendent Brixton David Musker**

- Sanction Detections
- Effective Trials
- Warrants
- Bail

Sanction Detection Rate	25.5%	Target 24%
Sanction Detection Rate Rape	38.5%	Target 30%

## **Value for Money**

**Lead: Borough Business Manager Diane McNulty**

- Efficiency
- Effectiveness
- Balance books
- Economy generation

**On Target to Deliver Within Budget**

## **Professional Team**

**Lead: Borough Business Manager Diane McNulty**

- Valued Staff
- Skills
- Standards
- Complaints
- Sickness

**No Measures in Place Targets to Be Designed**

## Next Steps

- Murder
- Counter Terrorism
- Guns & Gangs
- Drugs Brixton Town Centre
- Fear of Crime
- Outside Resources
- Safer Neighbourhood Teams
- CDRP
- Community Involvement
- Debate



## Your views

I have 4 Questions for you

- What is your vision of policing?
- How can we work even better together?
- What do you feel is going well?
- What do we need to debate and try to resolve?



## Performance



## Volume Crime (PSA 1) YTD

				-8.0%		767
				-9.8%		97
				-18.6%		237
				-3.1%		55
				-10.6%		278
				-28.7%		149
				-19.5%		151

Sanction Detection Target 24% Performance 25.5%



## Current Areas Where We Need to Improve

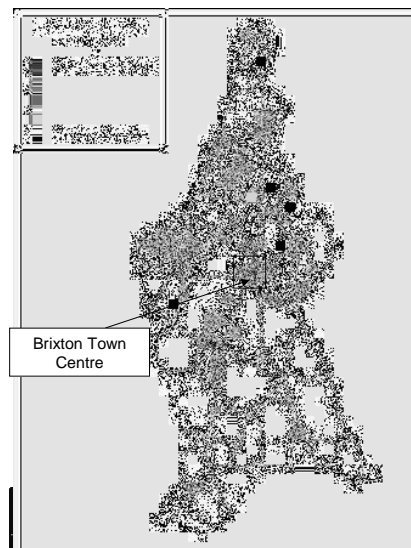
				13.2%		209
				54.2%		45

Some Individual Sanction Detection Targets



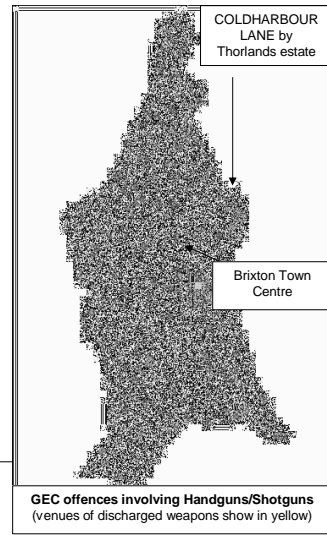
## Motor Vehicle Crime

(including Theft of Motor Vehicle and Theft from Motor Vehicle)



- Patrols in Town Centre to tackle all crime.
- Partnership activity to improve car park security especially around Academy nights.
- PCSO's posted to Tube stations
- Friday 7th September there is a vehicle crime reduction campaign in Halfords Car Park, Effra Road. This will include window etching and crime prevention advice.

## Gun Crime FYTD & Lambeth Operations



- Lambeth Drugs & Firearms Team
- Last two weeks executed 9 warrants.
- Recovered 2 firearms
- Recovered 1 prohibited weapon
- Recovered 4 imitation firearms
- Recovered quantity of drugs & money
- 2 Operation Neons in August
- resulting in: 60 firearm stops & 15 Arrests
- Inc. recovery of vehicle stolen in an aggravated burglary

## SCD Operations

- SCD1 & SCD8 Murder Investigations
- SCD8 4 Non Fatal Shootings
- SCD8 6 Operations
- SCD7 3 Operations
- SCD3 1 Operation
- Prevention Initiatives
- SCD1 involved 1 initiative
- SCD3 involved 3 initiatives
- SCD7 involved 3 initiatives
- SCD8 involved 2 initiatives

## Future planned initiatives

- SCD in Month of September will be conducting 26 operations involving Lambeth
- Lambeth
- 4 Operation Neon's planned for September
- 6 Firearm warrants planned at this stage
- Operation Blunt
- Operation Curb
- Operation Anchorage 2
- 36 Proactive Operations in September

## Murder Investigations Update 2007

- **Catherine MARLOW** 13/01/2007 66 South Lambeth Road, SW8
- Suspect remanded in custody to the Central Criminal Court trial set for 25/02/2008
- **Michael EDWARDS** 21/01/2007 Hart House, St Martins Estate, Kennington stabbed Suspect awaiting trial CCC Jan 2008
- **James SMARRT – FORD** 03/02/2007 Shot at Streatham Ice Rink. Fifteen arrests made 5 still on bail enqs continue.
- SCD8 to update



## **Murder Investigations Update 2007**

- **William COX** 14/02/2007 shot at his house in Fenwick Place. 1 arrested to date currently on bail until August. Enquiries Continue. SCD8 to update
- **Stephen O'NEILL** aged 54 years 03/04/2007 32 Orsett Street, SE11, assaulted causing fatal injuries.
  - 1 suspect arrested enqs continue
- **Alfred Christopher LIVERPOOL**, male IC3 27/04/2007 Flat 6 Clarence House Rushcroft Road SW2 murder by shooting. No suspects at this stage. Enqs continue SCD8 to update



## **Murder Investigations Update 2007**

- **Mohamed Nateez ABDULRAHEEM AKA Rizmi RAHEEM**
- Sri Lankan Male aged 31 years 02/06/2007 found trussed up and murdered at 5 Sardeson House, SE27.
- 3 Charged remanded in custody awaits trial CCC.
- **Yanire IZAJA** aged 2 died 03/06/2007 as a result of her injuries caused by her father . Parliament View
- Suspect on bail until Late September 2007 currently under section 3 Mental Health Act .



## Murder Investigations Update 2007

- **Carlos AYALA-CARMONA & Reuben FUENTE** 05/06/2007 18 Muller Road 2 victims both stabbed 27/07/2007 1 suspect charged with Murder awaits trial CCC
- **Orlando THOMPSON** 15/06/2007 Key House Bowling Green Street stabbed twice
- 1 suspect charged on remand awaits trial CCC 3 currently on bail
- **Ken HONG** 20/06/2007 Abercairn Road came out of his house to discover a suspect in his vehicle. Victim was eventually thrown from the vehicle by the suspect driven at speed.
- 1 Suspect Charged with Murder awaits trial CCC



## Murder Investigations Update 2007

- **Kola BABADIYA** SW8 Bar Wandsworth Road 15/07/2007
- Murder victim working as barman shot O/S Club
- Second Male victim Shot in back survived shooting
- Enquiries continue SCD8 to update
- **Jackie PRIESTLY** 26/07/2007 Flat 6, Falmouth House, 1, Seaton Close Murdered in her flat 2 Suspects Charged with Murder
- **Abukar MAHAMUD** Male IC3 aged 16 years 26/07/2007 Flat 8, Cassell House, Stockwell Gardens Estate 1 Suspect charged with the murder of Abukar Mahamud has been remanded i/c to CCC 1.11.07.



## Murder Investigations Update 2007

- **Leon NELSON** male IC3 23 Years 31/07/2007 FLAT 7,PULHAM HOUSE,DORSET ROAD old stabbed in the street
- **Nathan FOSTER** 03/08/2007 27,Marcus Garvey Way male IC3 age 18 years shot in the street.  
Suspect charged with murder awaits trial CCC
- **Evren ANIL** 05/08/2007 28,Central Hill Male IC2 23years stabbed in street after dispute with males  
Suspects arrested enqs continue
- Male IC3 44 yrs 03/09/2007
- 123 Paulet Road, SE5 victim stabbed in his home enqs continue to trace suspects

## Murder Investigations Update 2006

- **Khizar HAYAT & Hamidullah HAMIDI** On 27/04/2006 a male threw a petrol bomb into the venue. Trial set for late 2007
- **Simon MONTEIRO** Victim died on 11/05/2006 single stab wound to chest in Stockwell Road.
- Enqs Continue to identify a suspect.



## **Murder Investigations Update 2006**

- **Anton SMITH** shot 4 times 20/10/2006 rear of 207 Clapham Park Rd 2 Suspects charged with murder
- Current Trial date set for September.
  
- **Jason DAWES** 11/12/2006 found dead with a number of stab wounds Cold Harbour Lane. Suspect charged remanded in custody awaits trial CCC November 2007.





# Community Police Consultative Group for Lambeth

Monthly Police Report

**CPCGLambeth**

**September 2007**

(Starting from April Data)

**Financial Year 2007-2008**

**The CPCG report will be produced on a Monthly basis by the Lambeth Police  
Performance & Review Unit**

**Not Protectively Marked**



## INDEX

### LAMBETH BOROUGH

<b>Page 1</b>	<b>CAD Achievements</b>
<b>Pages 2-6</b>	<b>Classified and Confirmed Offences, Detections for: Robbery Burglary Motor Vehicle Offences Gun Enabled Offences Domestic Violence Offences Homophobic and Racial Offences Violent Crime Total Notifiable Offences Drug Offences Criminal Damages Common Assault Theft of Pedal Cycle offence</b>
<b>Page 7</b>	<b>Aid Requirements / Performance FYTD</b>
<b>Page 8</b>	<b>Crime Monthly Performance</b>
<b>Page 9</b>	<b>Organogram</b>
<b>Page 10</b>	<b>Glossary</b>

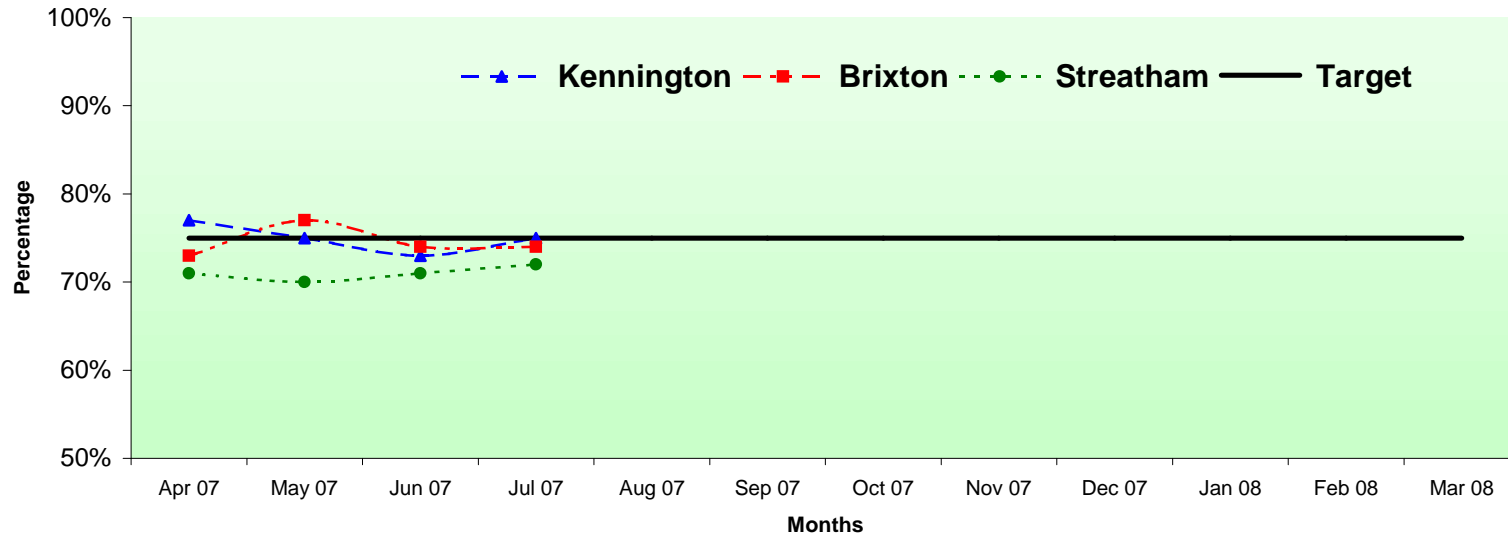
**Stops Data to be part of report on a Quarterly basis**

Protective Marking	Not Protectively Marked
FOIA Exemption	None
Publication Scheme	No
Title and Version	Lambeth Community and Police Consultative Group Monthly Report
Purpose	To Inform Relevant Staff and Community of Performance
Relevant To	All Staff on Lambeth BOCU and community members
Author and warrant / pay number	Trevor Peplow PC 394 LX
OCU / Branch / Unit	Lambeth Police Performance and Review Unit @ Frank O'Neill House
Summary	Report is produced on a monthly basis
Date Created	23 February 2007
Review Date	Monthly as Required

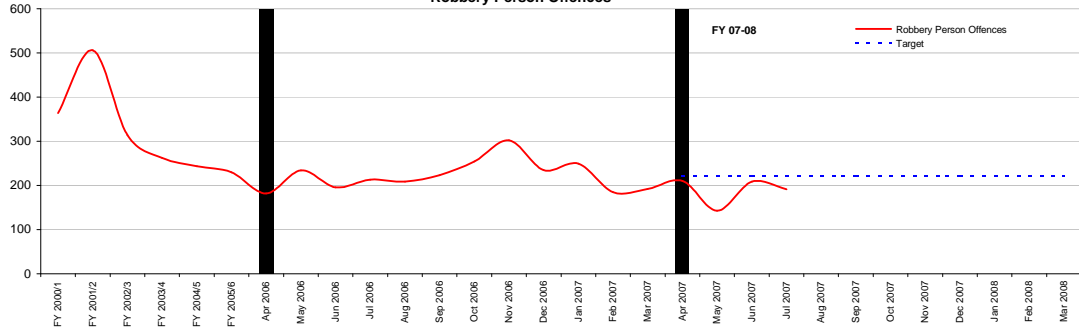
# CAD Achievement Trends

Call Type	Sector / Month	Month												
		Apr 2007	May 2007	Jun 2007	Jul 2007	Aug 2007	Sep 2007	Oct 2007	Nov 2007	Dec 2007	Jan 2008	Feb 2008	Mar 2008	
I CALLS	Kennington	77%	75%	73%	75%									
	<b>Kennington Average YTD</b>	<b>77%</b>	<b>76%</b>	<b>75%</b>	<b>75%</b>									
	Brixton	73%	77%	74%	74%									
	<b>Brixton Average YTD</b>	<b>73%</b>	<b>75%</b>	<b>75%</b>	<b>75%</b>									
	Streatham	71%	70%	71%	72%									
	<b>Streatham Average YTD</b>	<b>71%</b>	<b>71%</b>	<b>71%</b>	<b>71%</b>									
	<b>Borough Average p/m</b>	<b>74%</b>	<b>74%</b>	<b>73%</b>	<b>74%</b>									
<b>Borough Average YTD</b>	<b>74%</b>	<b>74%</b>	<b>73%</b>	<b>74%</b>										

CAD Achievements for Lambeth SubCommands

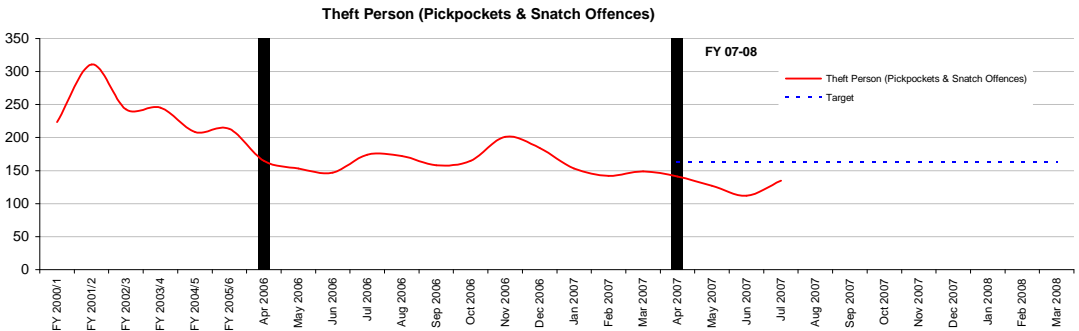


### Community Police Consultative Group for Lambeth-Monthly Report Robbery Person Offences



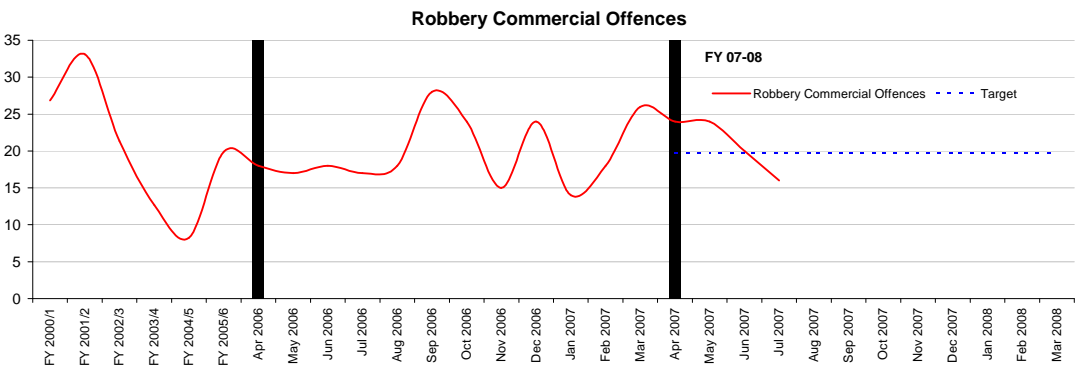
Financial Year to Date Compared to Same Period in last Financial Year

<b>Current Offences FYTD:</b>	-9% Down	<b>Monthly Average:</b>	188
<b>Current Detection Rate FYTD:</b>	13% (Up from 9%)	<b>Target Offences (Monthly):</b>	220.6
<b>Current SD Rate FYTD:</b>	13% (Up from 9%)	<b>Sanct Detections Target:</b>	14%
		<b>Detections Target:</b>	0%



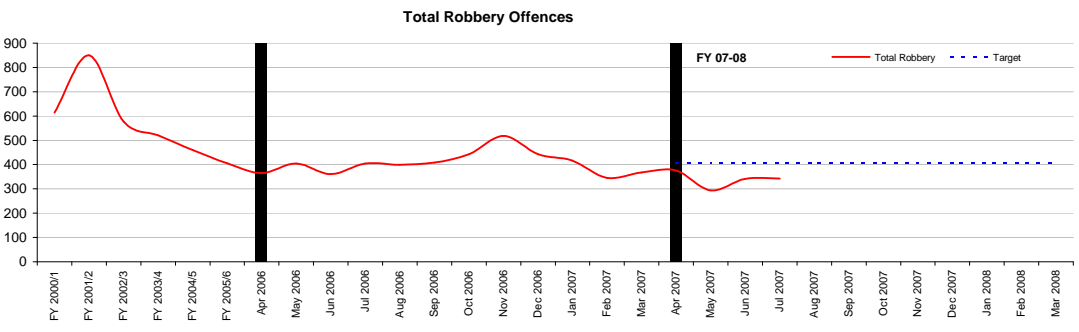
Financial Year to Date Compared to Same Period in last Financial Year

<b>Current Offences FYTD:</b>	-19% Down	<b>Monthly Average:</b>	129
<b>Current Detection Rate FYT:</b>	2% (Down from 2%)	<b>Target Offences (Monthly):</b>	164
<b>Current SD Rate FYTD:</b>	2% (Down from 2%)	<b>Sanct Detections Target:</b>	0.0
		<b>Detections Target:</b>	0%



Financial Year to Date Compared to Same Period in last Financial Year

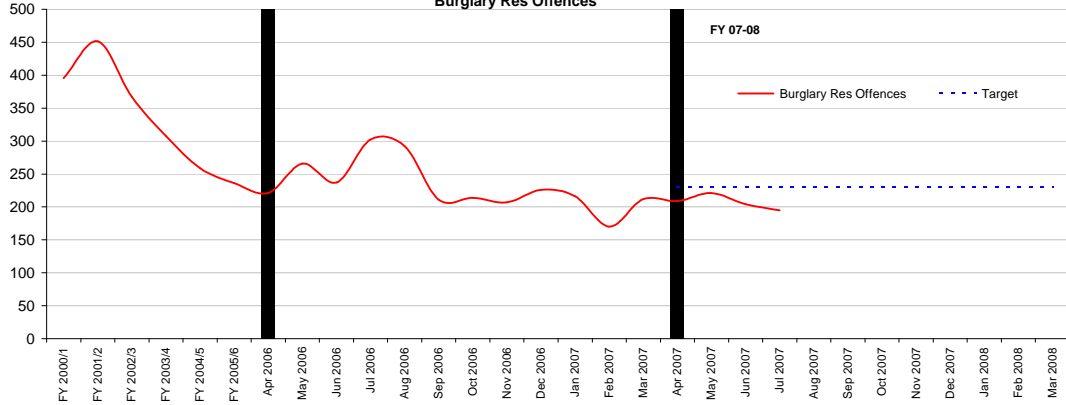
<b>Current Offences FYTD:</b>	20% Up	<b>Monthly Average:</b>	21
<b>Current Detection Rate FYT:</b>	20% (Up from 10%)	<b>Target Offences (Monthly):</b>	20
<b>Current SD Rate FYTD:</b>	20% (Up from 10%)	<b>Sanct Detections Target:</b>	0.0
		<b>Detections Target:</b>	0%



Financial Year to Date Compared to Same Period in last Financial Year

<b>Current Offences FYTD:</b>	-12% Down	<b>Monthly Average:</b>	338
<b>Current Detection Rate FYT:</b>	9% (Up from 7%)	<b>Target (Monthly):</b>	406
<b>Current SD Rate FYTD:</b>	9% (Up from 7%)	<b>Detections Target:</b>	0.0
		<b>Sanct Detect Target:</b>	14%

### Community Police Consultative Group for Lambeth-Monthly Report Burglary Res Offences



Financial Year to Date Compared to Same Period in last Financial Year

Current Offences FYTD: -19% Down

Monthly Average:

207

Target (Monthly):

231

Current Detection Rate FYT 12% (Up from 7%)

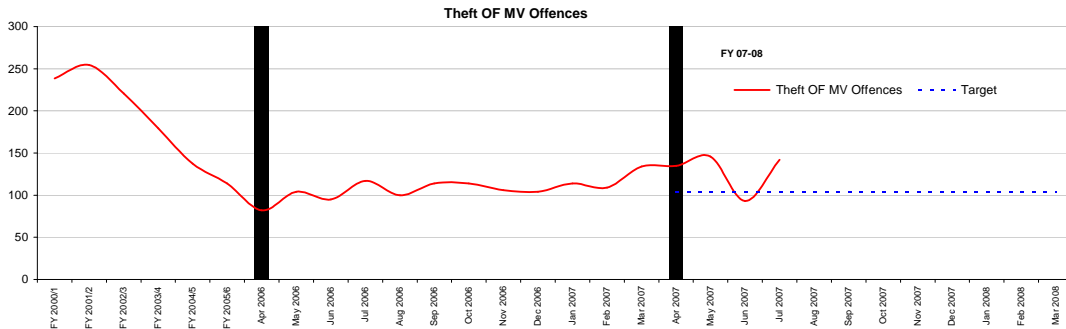
Detections Target:

0.0

Current SD Rate FYTD: 12% (Up from 7%)

Sanct Detect Target:

20%



Financial Year to Date Compared to Same Period in last Financial Year

Current Offences FYTD: 30% Up

Monthly Average:

129

Target (Monthly):

103

Current Detection Rate FYT 9% (Up from 6%)

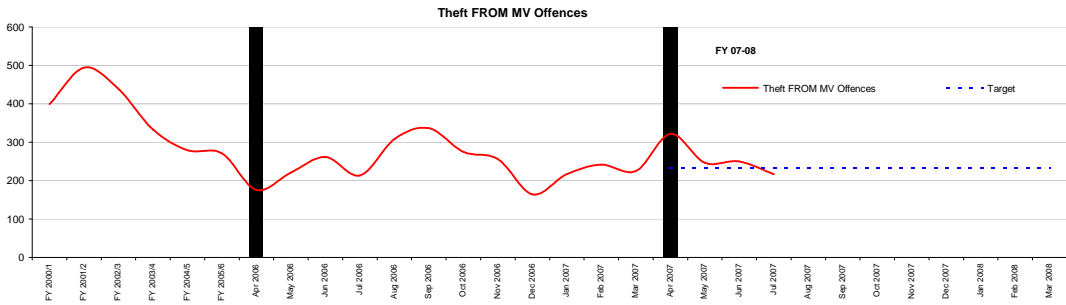
Detections Target:

0.0

Current SD Rate FYTD: 9% (Up from 6%)

Sanct Detect Target:

0%



Financial Year to Date Compared to Same Period in last Financial Year

Current Offences FYTD: 19% Up

Monthly Average:

259

Target (Monthly):

233

Current Detection Rate FY 5% (Up from 2%)

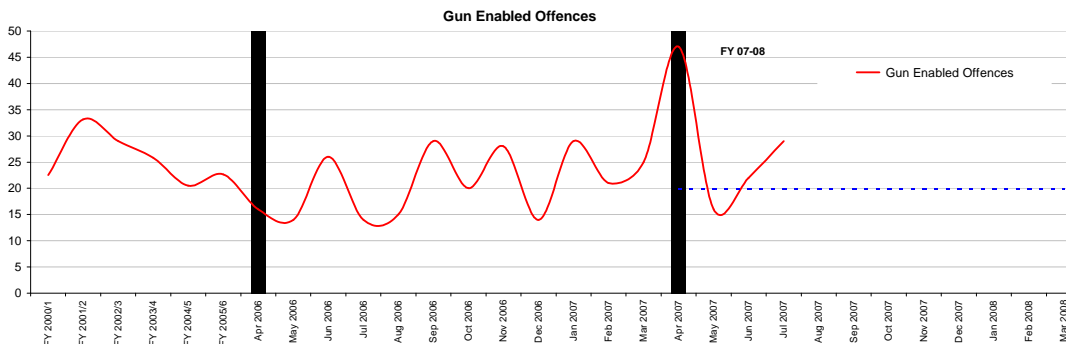
Detections Target:

0.0

Current SD Rate FYTD: 5% (Up from 2%)

Sanct Detect Target:

0%



Financial Year to Date Compared to Same Period in last Financial Year

Current Offences FYTD: 63% Up

Monthly Average:

29

Target (Monthly):

20

Current Detection Rate FYT 10% (Down from 17%)

Detections Target:

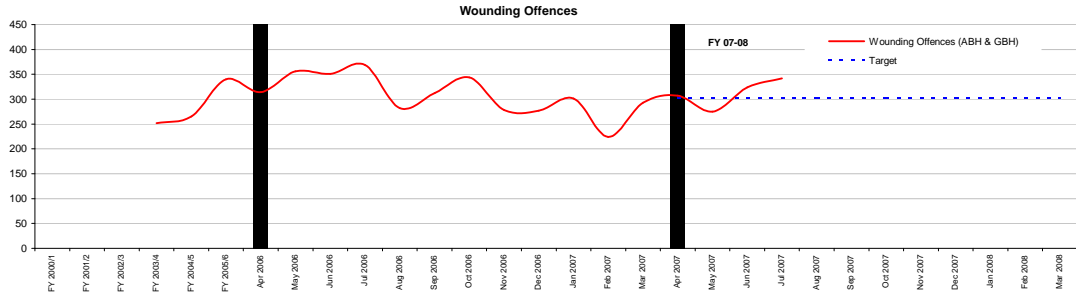
0.0

Current SD Rate FYTD: 10% (Down from 17%)

Sanct Detect Target:

0%

## Community Police Consultative Group for Lambeth-Monthly Report



Financial Year to Date Compared to Same Period in last Financial Year

Current Offences FYTD: -10% Down

Monthly Average:

312

Target (Monthly):

302

Current Detection Rate FYT 21% (Down from 22%)

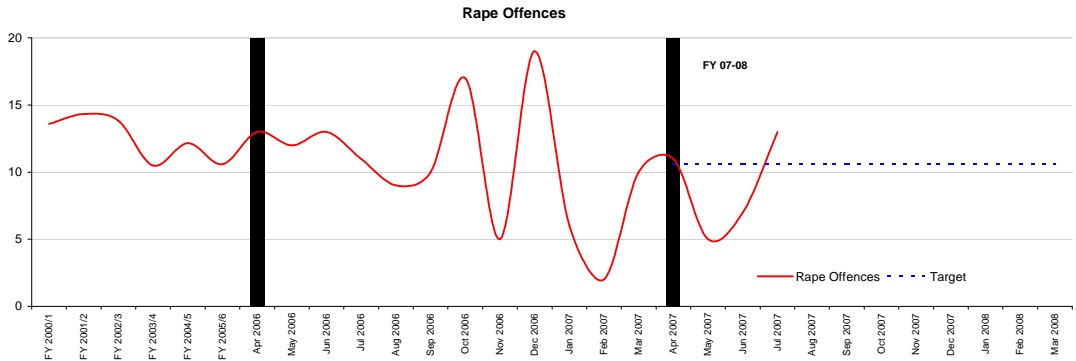
Detections Target:

0.0

Current SD Rate FYTD: 21% (Up from 20%)

Sanct Detect Target:

0%



Financial Year to Date Compared to Same Period in last Financial Year

Current Offences FYTD: -27% Down

Monthly Average:

9

Target (Monthly):

11

Current Detection Rate FYT 42% (Up from 18%)

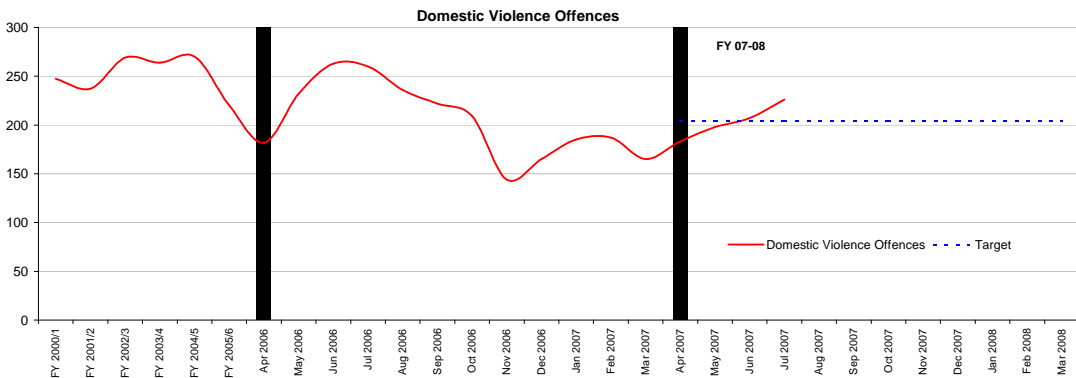
Detections Target:

0.0

Current SD Rate FYTD: 42% (Up from 18%)

Sanct Detect Target:

30%



Financial Year to Date Compared to Same Period in last Financial Year

Current Offences FYTD: -13% Down

Monthly Average:

204

Target (Monthly):

204

Current Detection Rate FY 31% (Down from 35%)

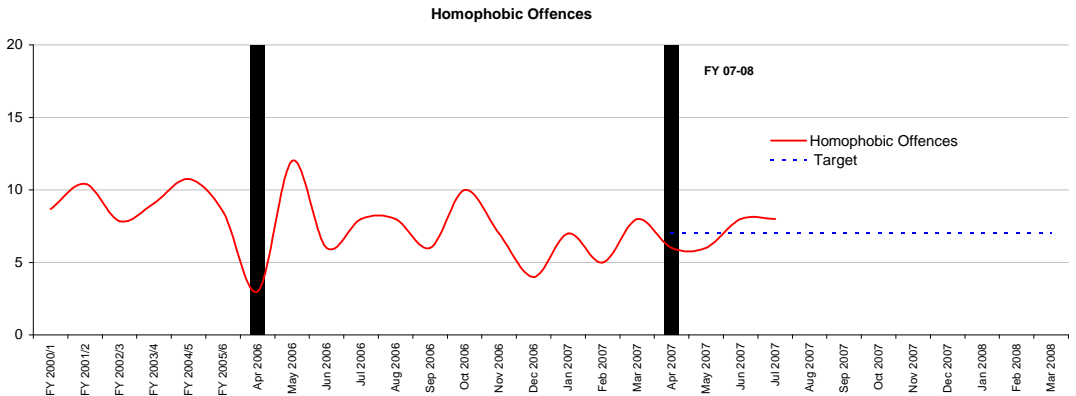
Detections Target:

0%

Current SD Rate FYTD: 31% (Down from 32%)

Sanct Detect Target:

40%



Financial Year to Date Compared to Same Period in last Financial Year

Current Offences FYTD: -3% Down

Monthly Average:

7

Target (Monthly):

7

Current Detection Rate FY 18% (Up from 17%)

Detections Target:

0%

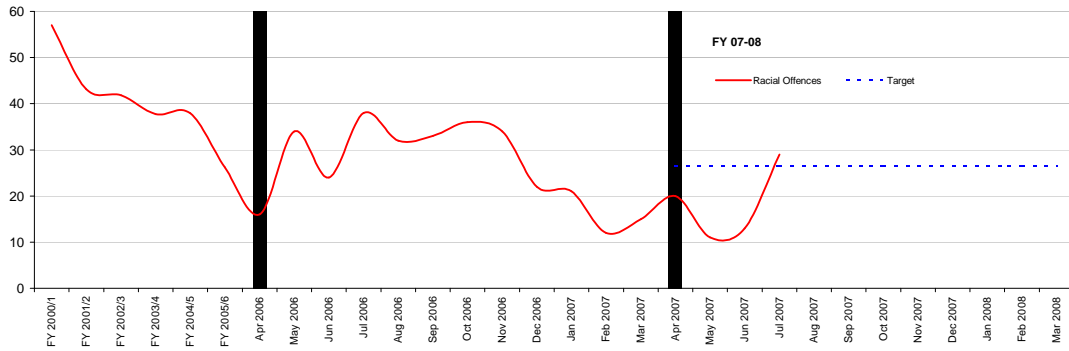
Current SD Rate FYTD: 18% (Up from 17%)

Sanct Detect Target:

33%

## Community Police Consultative Group for Lambeth-Monthly Report

### Racial Offences



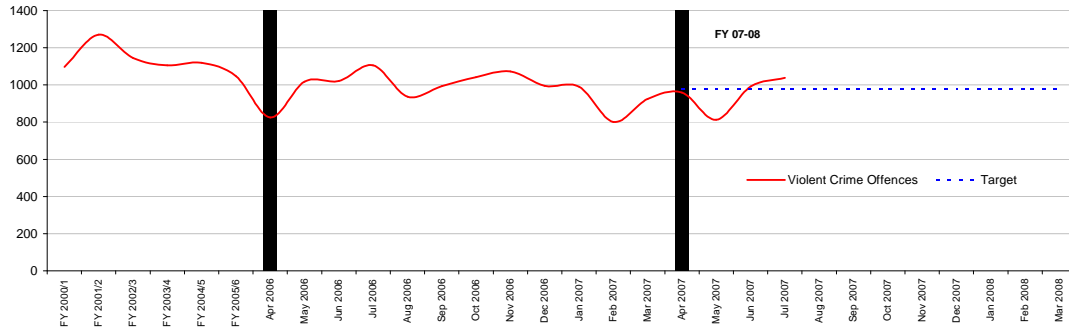
Financial Year to Date Compared to Same Period in last Financial Year

Current Offences FYTD: -35% Down

Monthly Average: 18  
Target (Monthly): 26  
Detections Target: 0%  
Sanct Detect Target: 36%

Current Detection Rate FY 41% (Up from 29%)  
Current SD Rate FYTD: 41% (Up from 29%)

### Violent Offences



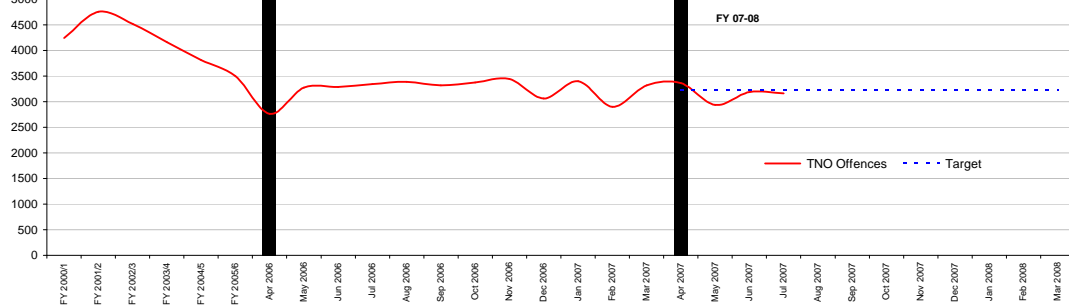
Financial Year to Date Compared to Same Period in last Financial Year

Current Offences FYTD: -4% Down

Monthly Average: 951  
Target (Monthly): 977  
Detections Target: 0%  
Sanct Detect Target: 0%

Current Detection Rate FY 27% (Up from 21%)  
Current SD Rate FYTD: 27% (Up from 20%)

### TNO Offences



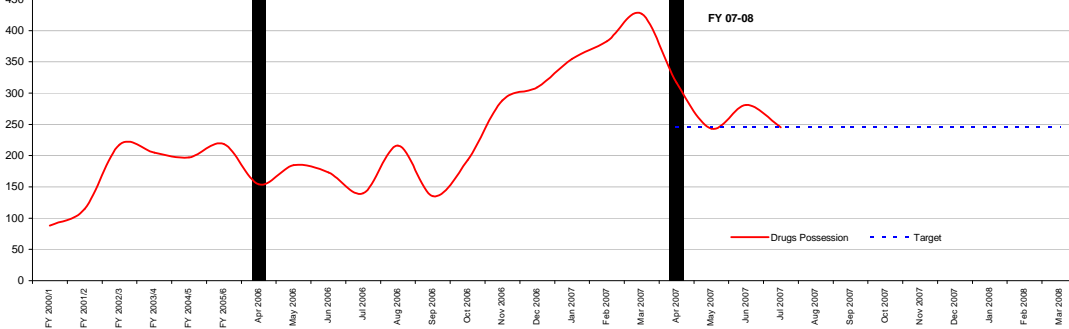
Financial Year to Date Compared to Same Period in last Financial Year

Current Offences FYTD: 0% Down

Monthly Average: 3163  
Target (Monthly): 3239  
Detections Target: 0%  
Sanct Detect Target: 24%

Current Detection Rate FY 26% (Up from 18%)  
Current SD Rate FYTD: 26% (Up from 17%)

### Drugs Possession Offences



Financial Year to Date Compared to Same Period in last Financial Year

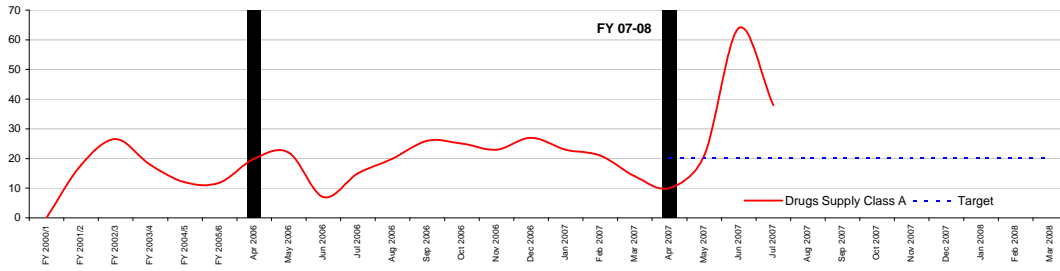
Current Offences FYTD: 67% Up

Monthly Average: 272  
Target (Monthly): 247  
Detections Target: 0%  
Sanct Detect Target: 0%

Current Detection Rate FY 99% (Up from 88%)  
Current SD Rate FYTD: 99% (Up from 87%)

## Community Police Consultative Group for Lambeth-Monthly Report

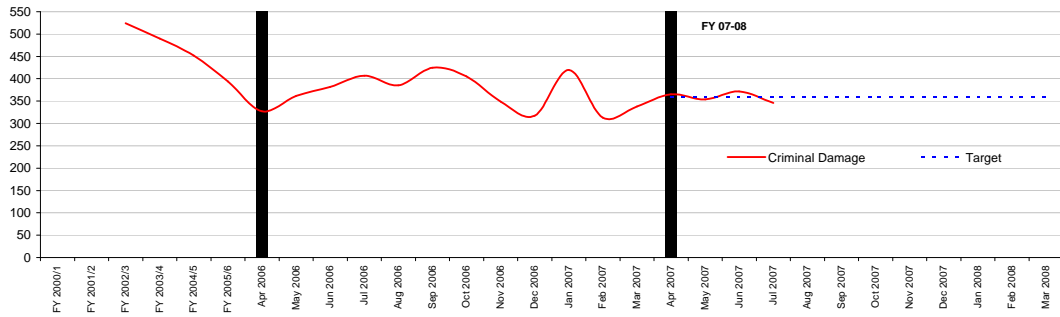
### Drugs Supply Class A Offences



Financial Year to Date Compared to Same Period in last Financial Year

<b>Supply</b>			
<b>Current Offences FYTD:</b>	108% Up	<b>Monthly Average:</b>	33
<b>Current Detection Rate FY NA</b>		<b>Target (Monthly):</b>	20
<b>Current SD Rate FYTD:</b>	13% (Up from 11%)	<b>Detections Target:</b>	0%
		<b>Sanct Detect Target:</b>	0%

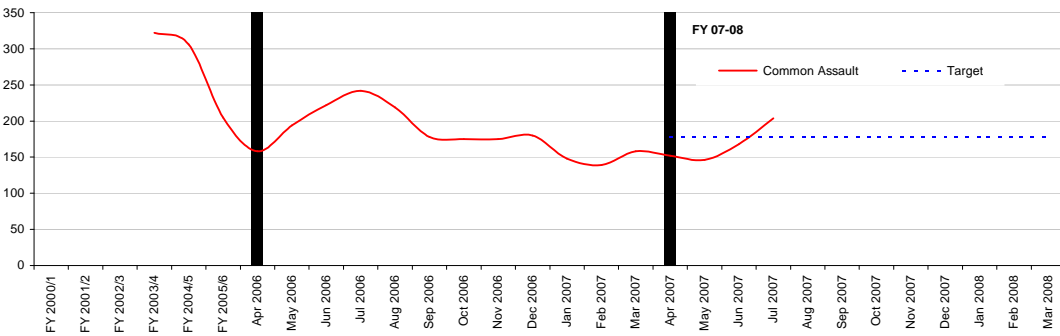
### Criminal Damage Offences



Financial Year to Date Compared to Same Period in last Financial Year

<b>Current Offences FYTD:</b>	-3% Down	<b>Monthly Average:</b>	359
<b>Current Detection Rate FY</b>	13% (Down from 109%)	<b>Target Offences (Monthly):</b>	358
<b>Current SD Rate FYTD:</b>	24% (Up from 18%)	<b>Sanct Detections Target</b>	0%
		<b>Detections Target:</b>	0%

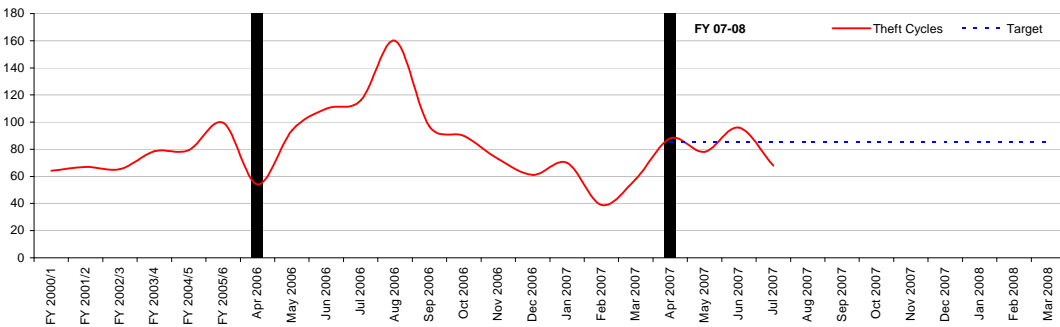
### Common Assault Offences



Financial Year to Date Compared to Same Period in last Financial Year

<b>Current Offences FYTD:</b>	-18% Down	<b>Monthly Average:</b>	168
<b>Current Detection Rate FY</b>	24% (Down from 110%)	<b>Target Offences (Monthly):</b>	177
<b>Current SD Rate FYTD:</b>	1% (Down from 1%)	<b>Sanct Detections Target</b>	0%
		<b>Detections Target:</b>	0%

### Theft Cycle Offences



Financial Year to Date Compared to Same Period in last Financial Year

<b>Current Offences FYTD:</b>	-12% Down	<b>Monthly Average:</b>	83
<b>Current Detection Rate FY</b>	1% (Down from 80%)	<b>Target Offences (Monthly):</b>	85
<b>Current SD Rate FYTD:</b>	20% (Up from 10%)	<b>Sanct Detections Target</b>	0%
		<b>Detections Target:</b>	0%

2006 - 2007  
Abstractions per Month

Date	Brixton			Kennington			Streatham			Totals		
	Insp	PS	PC	Insp	PS	PC	Insp	PS	PC	Insp	PS	PC
April	6	45	206	12	51	258	5	36	173	23	132	637
May	6	31	141	3	25	128	2	30	134	11	86	403
June	2	34	137	1	26	107	5	24	106	8	84	350
July	5	43	194	4	35	197	4	32	189	13	110	580

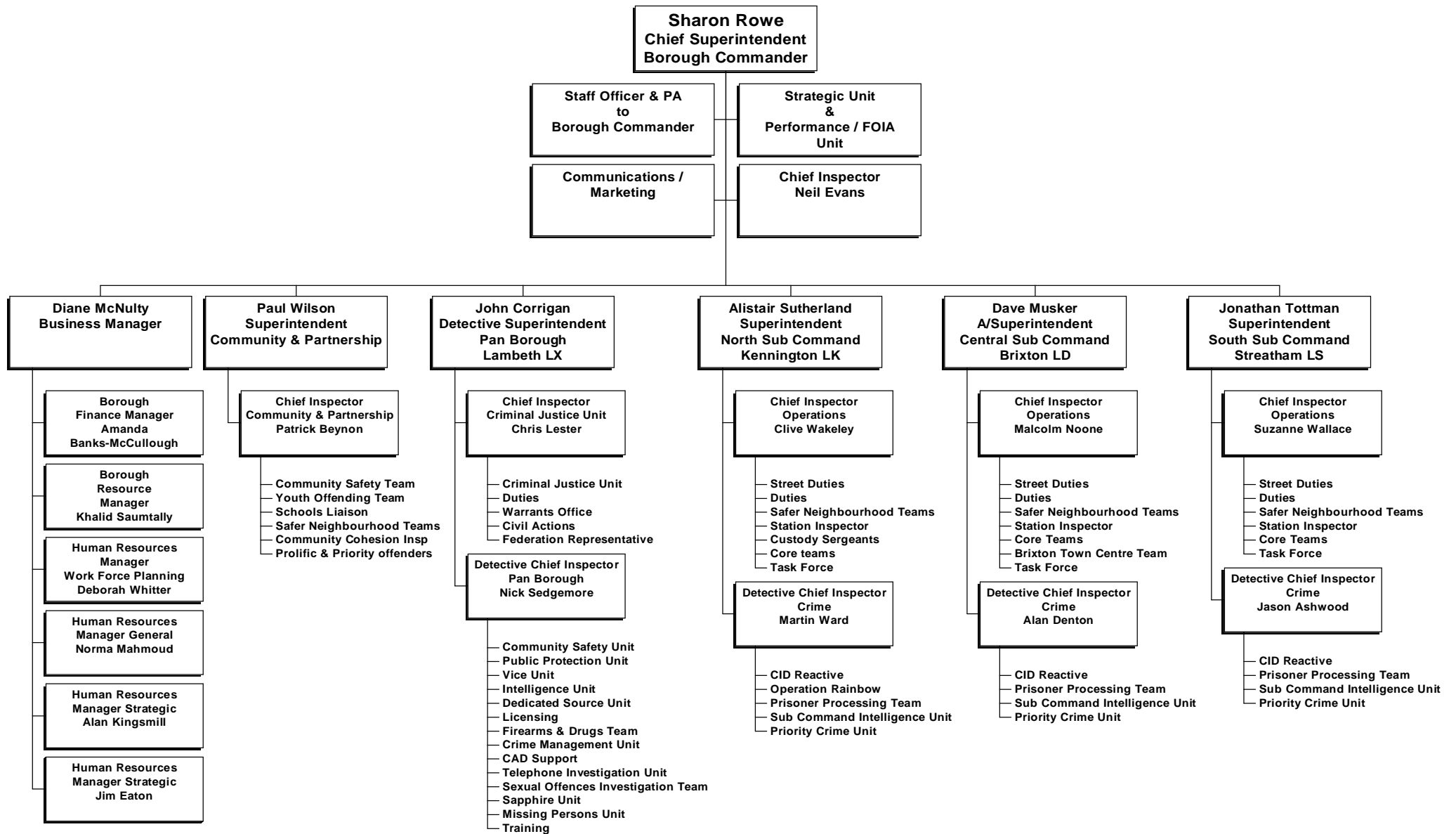
**Borough Workforce Targets – Police officers**

- Brixton 278**
- Kennington 288**
- Streatham 206**
- Pan Borough 150**

**Financial Year To Date Crime Performance**

	FY 2007 to July (ytd)	FY 2006 to July (ytd)	Difference	% Change
Total Crimes	12,652	12,662	-10	-0.1%
Homicide	11	6	5	83.3%
Violence Against the Person (Total)	2,831	2,895	-64	-2.2%
Rape	36	49	-13	-26.5%
Other Sexual	98	130	-32	-24.6%
Robbery (Total)	837	895	-58	-6.5%
Robbery (Person)	753	825	-72	-8.7%
Robbery (Business)	84	70	14	20.0%
Burglary (Total)	1,134	1,381	-247	-17.9%
Burglary Residential	829	1,026	-197	-19.2%
Burglary Non-Residential	305	355	-50	-14.1%
Gun Enabled Crime	114	70	44	62.9%
Motor Vehicle Crime	1,552	1,270	282	22.2%
Domestic Crime	814	937	-123	-13.1%
Racist Crime	73	112	-39	-34.8%
Homophobic Crime	28	29	-1	-3.4%

# Lambeth Borough Police Structure



## Lambeth Crime Table FY 2005-2006

<b>July 2007</b>		Offences		Sanctioned Detections				Non-Sanctioned Detections				Detections & Detection Rate				Persons Accused	
		MPS Total	Lambeth	MPS Total	Lambeth	MPS Total	Lambeth	MPS Total	Lambeth	MPS Total	Lambeth	MPS Total	Lambeth	MPS Total	Lambeth		
<b>Violence Against the Person</b>		<b>15803</b>	<b>792</b>	<b>5723</b>	<b>36.21%</b>	<b>271</b>	<b>34.22%</b>	<b>2</b>	<b>0.01%</b>	<b>0</b>	<b>0.00%</b>	<b>5725</b>	<b>36.23%</b>	<b>271</b>	<b>34.22%</b>	<b>3477</b>	<b>142</b>
	Murder	11	3	14	127.27%	3	100.00%	1	9.09%	0	0.00%	15	136.36%	3	100.00%	21	1
	GBH	382	20	138	36.13%	7	35.00%	0	0.00%	0	0.00%	138	36.13%	7	35.00%	97	4
	ABH	5987	301	1791	29.91%	64	21.26%	1	0.02%	0	0.00%	1792	29.93%	64	21.26%	1104	29
	Common Assault	3774	183	932	24.70%	29	15.85%	0	0.00%	0	0.00%	932	24.70%	29	15.85%	538	14
	Offensive Weapon	647	47	594	91.81%	45	95.74%	0	0.00%	0	0.00%	594	91.81%	45	95.74%	410	29
	Harassment	4093	171	1834	44.81%	92	53.80%	0	0.00%	0	0.00%	1834	44.81%	92	53.80%	1095	49
	Other Violence	909	67	420	46.20%	31	46.27%	0	0.00%	0	0.00%	420	46.20%	31	46.27%	212	16
<b>Sexual Offences</b>		<b>801</b>	<b>39</b>	<b>193</b>	<b>24.09%</b>	<b>9</b>	<b>23.08%</b>	<b>0</b>	<b>0.00%</b>	<b>0</b>	<b>0.00%</b>	<b>193</b>	<b>24.09%</b>	<b>9</b>	<b>23.08%</b>	<b>149</b>	<b>6</b>
	Rape	161	13	56	34.78%	6	46.15%	0	0.00%	0	0.00%	56	34.78%	6	46.15%	47	4
	Other Sexual	640	26	137	21.41%	3	11.54%	0	0.00%	0	0.00%	137	21.41%	3	11.54%	102	2
<b>Robbery</b>		<b>3112</b>	<b>207</b>	<b>567</b>	<b>18.22%</b>	<b>44</b>	<b>21.26%</b>	<b>5</b>	<b>0.16%</b>	<b>0</b>	<b>0.00%</b>	<b>572</b>	<b>18.38%</b>	<b>44</b>	<b>21.26%</b>	<b>401</b>	<b>13</b>
	Personal Property	2863	191	488	17.05%	38	19.90%	0	0.00%	0	0.00%	488	17.05%	38	19.90%	351	12
	Business Property	249	16	79	31.73%	6	37.50%	5	2.01%	0	0.00%	84	33.73%	6	37.50%	50	1
<b>Burglary</b>		<b>7470</b>	<b>282</b>	<b>1069</b>	<b>14.31%</b>	<b>59</b>	<b>20.92%</b>	<b>0</b>	<b>0.00%</b>	<b>0</b>	<b>0.00%</b>	<b>1069</b>	<b>14.31%</b>	<b>59</b>	<b>20.92%</b>	<b>422</b>	<b>9</b>
	Burglary in a Dwelling	4451	195	694	15.59%	36	18.46%	0	0.00%	0	0.00%	694	15.59%	36	18.46%	215	8
	Burglary in Other Buildings	3019	87	375	12.42%	23	26.44%	0	0.00%	0	0.00%	375	12.42%	23	26.44%	207	1
<b>Theft and Handling</b>		<b>29256</b>	<b>1082</b>	<b>3283</b>	<b>11.22%</b>	<b>121</b>	<b>11.18%</b>	<b>1</b>	<b>0.00%</b>	<b>0</b>	<b>0.00%</b>	<b>3284</b>	<b>11.23%</b>	<b>121</b>	<b>11.18%</b>	<b>2206</b>	<b>91</b>
<b>Motor Vehicle Crime</b>		<b>10205</b>	<b>359</b>	<b>544</b>	<b>5.33%</b>	<b>23</b>	<b>6.41%</b>	<b>0</b>	<b>0.00%</b>	<b>0</b>	<b>0.00%</b>	<b>544</b>	<b>5.33%</b>	<b>23</b>	<b>6.41%</b>	<b>297</b>	<b>17</b>
	Theft/Taking of M/V	2971	142	216	7.27%	12	8.45%	0	0.00%	0	0.00%	216	7.27%	12	8.45%	186	11
	Theft from a Vehicle	7234	217	328	4.53%	11	5.07%	0	0.00%	0	0.00%	328	4.53%	11	5.07%	111	6
	M/V Interference & Tampering	291	13	31	10.65%	2	15.38%	0	0.00%	0	0.00%	31	10.65%	2	15.38%	21	1
<b>Theft from Person</b>		<b>2911</b>	<b>135</b>	<b>93</b>	<b>3.19%</b>	<b>1</b>	<b>0.74%</b>	<b>0</b>	<b>0.00%</b>	<b>0</b>	<b>0.00%</b>	<b>93</b>	<b>3.19%</b>	<b>1</b>	<b>0.74%</b>	<b>86</b>	<b>3</b>
	Snatches	763	49	39	5.11%	1	2.04%	0	0.00%	0	0.00%	39	5.11%	1	2.04%	31	3
	Picking Pockets etc	2148	86	54	2.51%	0	0.00%	0	0.00%	0	0.00%	54	2.51%	0	0.00%	55	0
	Theft from Shops	2969	71	1780	59.95%	51	71.83%	1	0.03%	0	0.00%	1781	59.99%	51	71.83%	1216	36
	Theft/Taking of Pedal Cycles	1648	68	43	2.61%	2	2.94%	0	0.00%	0	0.00%	43	2.61%	2	2.94%	42	2
	Other Theft	10992	427	558	5.08%	26	6.09%	0	0.00%	0	0.00%	558	5.08%	26	6.09%	391	20
	Handling Stolen Goods	240	9	234	97.50%	16	177.78%	0	0.00%	0	0.00%	234	97.50%	16	177.78%	153	12
<b>Fraud or Forgery</b>		<b>2959</b>	<b>63</b>	<b>738</b>	<b>24.94%</b>	<b>15</b>	<b>23.81%</b>	<b>0</b>	<b>0.00%</b>	<b>0</b>	<b>0.00%</b>	<b>738</b>	<b>24.94%</b>	<b>15</b>	<b>23.81%</b>	<b>441</b>	<b>7</b>
	Counted per Victim	1409	15	204	14.48%	8	53.33%	0	0.00%	0	0.00%	204	14.48%	8	53.33%	116	3
	M/V Interference & Tampering	1550	48	534	34.45%	7	14.58%	0	0.00%	0	0.00%	534	34.45%	7	14.58%	325	4
<b>Criminal Damage</b>		<b>8993</b>	<b>350</b>	<b>1213</b>	<b>13.49%</b>	<b>64</b>	<b>18.29%</b>	<b>0</b>	<b>0.00%</b>	<b>0</b>	<b>0.00%</b>	<b>1213</b>	<b>13.49%</b>	<b>64</b>	<b>18.29%</b>	<b>728</b>	<b>34</b>
	Criminal Damage to a Dwelling	2284	108	327	14.32%	25	23.15%	0	0.00%	0	0.00%	327	14.32%	25	23.15%	201	11
	Criminal Damage to Other Bldg	975	30	173	17.74%	4	13.33%	0	0.00%	0	0.00%	173	17.74%	4	13.33%	117	1
	Criminal Damage to M/V	4328	158	393	9.08%	17	10.76%	0	0.00%	0	0.00%	393	9.08%	17	10.76%	225	13
	Other Criminal Damage	1406	54	320	22.76%	18	33.33%	0	0.00%	0	0.00%	320	22.76%	18	33.33%	185	9
<b>Drugs</b>		<b>5909</b>	<b>295</b>	<b>6030</b>	<b>102.05%</b>	<b>307</b>	<b>104.1%</b>	<b>0</b>	<b>0.00%</b>	<b>0</b>	<b>0.00%</b>	<b>6030</b>	<b>102.05%</b>	<b>307</b>	<b>104.1%</b>	<b>2007</b>	<b>125</b>
	Drug Trafficking	343	49	384	111.95%	53	108.16%	0	0.00%	0	0.00%	384	111.95%	53	108.16%	261	30
	Possession of Drugs	5542	245	5620	101.41%	254	103.67%	0	0.00%	0	0.00%	5620	101.41%	254	103.67%	1724	95
	Other Drug Offences	24	1	26	108.33%	0	0.00%	0	0.00%	0	0.00%	26	108.33%	0	0.00%	22	0
<b>Other Notifiable Offences</b>		<b>1012</b>	<b>51</b>	<b>681</b>	<b>67.29%</b>	<b>38</b>	<b>74.51%</b>	<b>0</b>	<b>0.00%</b>	<b>0</b>	<b>0.00%</b>	<b>681</b>	<b>67.29%</b>	<b>38</b>	<b>74.51%</b>	<b>473</b>	<b>21</b>
	Going Equipped	65	2	66	101.54%	1	50.00%	0	0.00%	0	0.00%	66	101.54%	1	50.00%	42	1
	Other Notifiable	947	49	615	64.94%	37	75.51%	0	0.00%	0	0.00%	615	64.94%	37	75.51%	431	20
<b>TOTAL NOTIFIABLE OFFENCES</b>		<b>75315</b>	<b>3161</b>	<b>19497</b>	<b>25.89%</b>	<b>928</b>	<b>29.36%</b>	<b>8</b>	<b>0.01%</b>	<b>0</b>	<b>0.00%</b>	<b>19505</b>	<b>25.90%</b>	<b>928</b>	<b>29.36%</b>	<b>10304</b>	<b>448</b>

Sanction Detections = charge, caution, summon, TICs & FPNs, cannabis warning  
 Non Sanctioned Detections = authority detections  
 Detections = Sanction Detections & Non Sanction Detections

\*Motor Vehicle Crime = theft/taking of M/V + theft from a vehicle  
 \*\*Theft Person = snatches + picking pockets

## **Glossary**

### **‘Sanctioned’ and ‘Non Sanctioned’ Detection Definitions**

A ‘Sanctioned’ Detection is where an allegation has resulted in either a charge, a summons, a caution, a formal warning, a youth reprimand or an offence being taken into consideration i.e. in addition to the charge for which the person is before a court, other offences can be admitted by the defendant and the court asked to take these offences into consideration in passing sentence.

A ‘Non-Sanctioned’ Detection is where a crime has been committed and recorded and: A suspect has been identified and interviewed by a police officer or, if an interview is not necessary to determine guilt, had at least been informed that the offence has been detected.

There must be sufficient evidence to charge the suspect with the crime.

If the victim subsequently refuses to give evidence, then a reason for this decision has been documented.

In the case where there is an identifiable victim, the victim must have been informed that the crime has been detected or in the case of a child, the parent or guardian has been informed.

### **Total Robbery**

Combination of Robbery and Theft-Snatch

### **Robbery**

Theft where force or threat of force is made to a person at the time or immediately before in order to steal

### **Theft - Snatch**

Theft where force is applied to the object carried by a person ie snatching an handbag or phone from a person

### **Motor Vehicle Crime**

Combination of theft from vehicles or taking of vehicles with the owners consent or theft of a motor vehicle

### **Gun Enabled Crime**

A crime which is a specific listed offence ie assaults, thefts or sexual offences whilst in possession of a firearm or imitation firearm and the firearm has been seen or used

### **ABH**

Assault where cuts bruises and other types of minor injuries are sustained

### **GBH**

Serious assault resulting in permanent injury broken bones

### **TNO Total Notifiable Offences**

All notifiable offences which are recorded by police and a crime report is generated

### **I-Call**

Police graded response to a call received in the Police Control Room. Immediate response within 12mins. For incidents where a suspect is still on scene/nearby or immediate danger is perceived

### **CAD**

Computer aided dispatch which is the computer system used within Metropolitan Police Control rooms to record incidents