

CPCG January 2008

Lambeth Police Report

Detective Superintendent John Corrigan



4th March 2008

Volume Crime (PSA 1) YTD

Offences	Target	Performance	Fewer Victims	Count
BCS	-2.0%	-9.7%	Fewer Victims	2045
Robbery	-1.0%	-17.4%	Fewer Victims	427
Criminal Damage	-2.9%	-11.4%	Fewer Victims	461
BCS assaults	-2.3%	-10.1%	Fewer Victims	543
Theft Cycle	0.0%	-25.8%	Fewer Victims	248
Theft Person	0.0%	-14.2%	Fewer Victims	254
Vehicle Crime	-3.6%	-6.5%	Fewer Victims	247
TNC		-7.4%	Fewer Victims	2592

Sanction Detection Target 24% Performance 25.3%

Volume Crime Hate & GEC YTD

Offences	Target	Performance	Fewer Victims	Count
Rape		-23.1%	Fewer Victims	27
Racist		-28.5%	Fewer Victims	86
Domestic		-11.7%	Fewer Victims	263
GEC	-5.0%	-7.6%	Fewer Victims	17

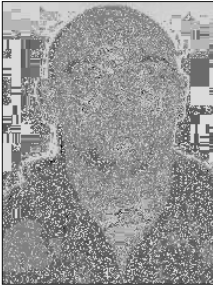
Sanction Detection Target 24% Performance 25.3%

Current Areas Where We Need to Improve

Burglary	Target	-0.1%	Performance	5.6%	More Victims	141
----------	--------	-------	-------------	------	--------------	-----

Sanction Detection Target 24% Performance 25.3%

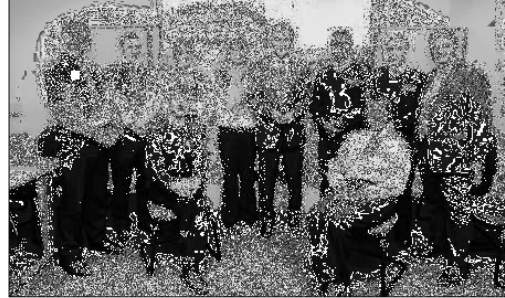
Terrance O'Keefe - Escapee



- Terrance O'Keefe was sentenced to life imprisonment in 1996 for robbery and serious sexual offences. He is detained under Section 47 Mental Health Act 1983 at Lambeth Hospital, SW9.
- On 15/02/2008 having complained of chest pains, he was taken to Kings College Hospital. During this treatment O'KEEFE walked out of the hospital building and he has not returned.



Prime Minister's & Home Secretary's visit



Victim Satisfaction Rates

• Satisfaction with ease of contact	Lambeth 91% MPS 89%
• Satisfaction with police actions	Lambeth 75% MPS 73%
• Satisfaction with police follow-up	Lambeth 56 % MPS 58%
• Satisfaction with police treatment	Lambeth 93% MPS 91%
• Satisfaction with overall service	Lambeth 78% MPS 77%



BCS projection for end of 2007/8

- PSA/1 finishes at the end of this Financial Year 2007/8
- The base line for BCS comparison in 2003/4 was 29690
- Target of 20% reduction over 4 years
- Current figures would project that Lambeth will achieve approx 29% reduction against the base line for BCS
- This would place Lambeth as third best achieving within the MPS



Trident Shootings Feb 2008

- Operation Fugol
- 25/02/2008 Kingsley House SW4

- Operation Funas
- 01/03/2008 Flaxman Sports Centre



Murder Updates

- 23 Murders in 2007
- 7 Still Outstanding Enquiries continue
- 8 Currently awaiting Trial
- 4 Trials are ongoing
- 1 Convicted
- 3 Sentenced
- 2 Murders in 2008
- 2 Currently awaiting Trial



Any Questions?



Lambeth OCU



Community Police Consultative Group for Lambeth

Monthly Police Report

CPCGLambeth

March 2008

(Starting from April Data)

Financial Year 2007-2008

**The CPCG report will be produced on a Monthly basis by the Lambeth Police
Performance & Review Unit**

Not Protectively Marked



INDEX

LAMBETH BOROUGH

Page 1	CAD Achievements
Pages 2-6	Classified and Confirmed Offences, Detections for: Robbery Burglary Motor Vehicle Offences Gun Enabled Offences Domestic Violence Offences Homophobic and Racial Offences Violent Crime Total Notifiable Offences Drug Offences Criminal Damages Common Assault Theft of Pedal Cycle offence
Page 7	Aid Requirements / Performance FYTD
Page 8	Crime Monthly Performance
Page 9	Organogram
Page 10	Glossary

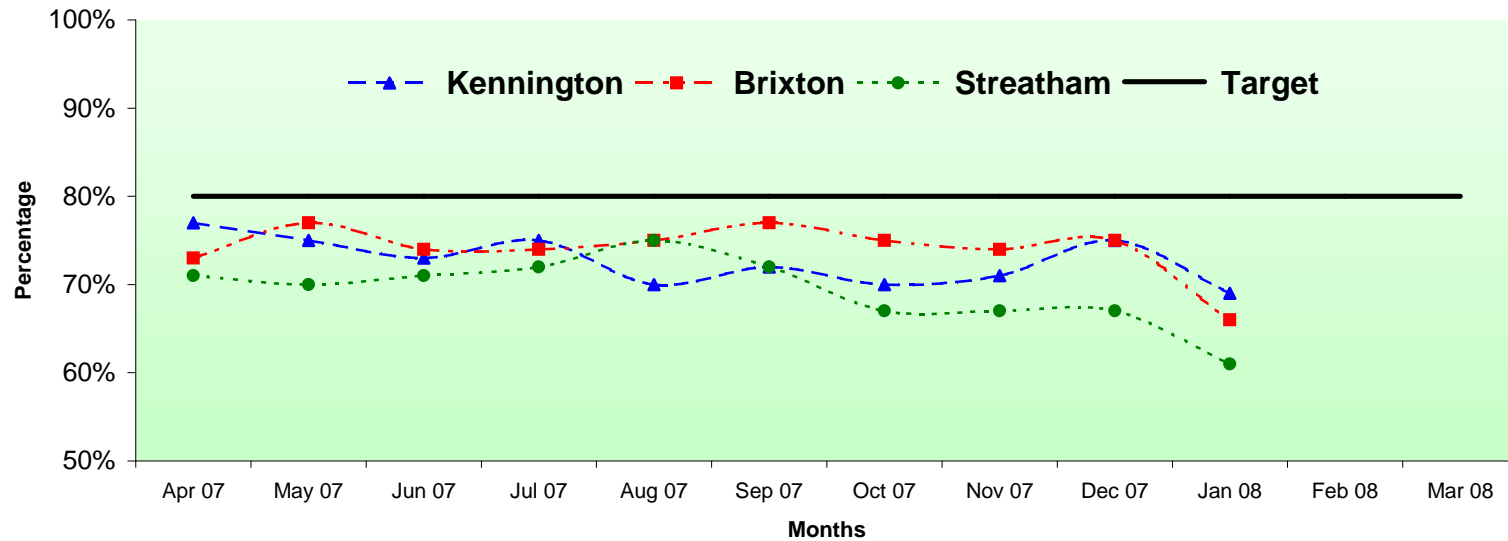
Stops Data to be part of report on a Quarterly basis

Protective Marking	Not Protectively Marked
FOIA Exemption	None
Publication Scheme	No
Title and Version	Lambeth Community and Police Consultative Group Monthly Report
Purpose	To Inform Relevant Staff and Community of Performance
Relevant To	All Staff on Lambeth BOCU and community members
Author and warrant / pay number	Trevor Peplow PC 394 LX
OCU / Branch / Unit	Lambeth Police Performance and Review Unit @ Frank O'Neill House
Summary	Report is produced on a monthly basis
Date Created	28 February 2008
Review Date	Monthly as Required

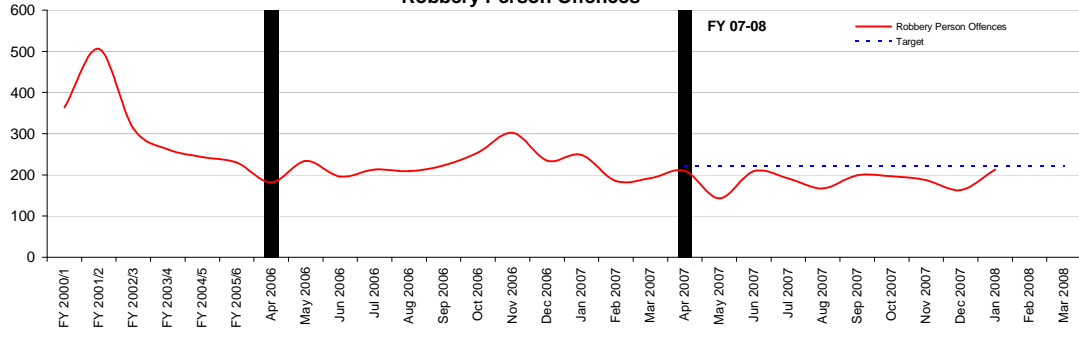
CAD Achievement Trends

Call Type	Sector / Month	Apr 2007	May 2007	Jun 2007	Jul 2007	Aug 2007	Sep 2007	Oct 2007	Nov 2007	Dec 2007	Jan 2008	Feb 2008	Mar 2008
I CALLS	Kennington	77%	75%	73%	75%	70%	72%	70%	71%	75%	69%		
	Kennington Average YTD	77%	76%	75%	75%	74%	74%	73%	73%	73%	73%		
	Brixton	73%	77%	74%	74%	75%	77%	75%	74%	75%	66%		
	Brixton Average YTD	73%	75%	75%	75%	75%	75%	75%	75%	75%	74%		
	Streatham	71%	70%	71%	72%	75%	72%	67%	67%	67%	61%		
	Streatham Average YTD	71%	71%	71%	71%	72%	72%	71%	71%	71%	69%		
	Borough Average p/m	74%	74%	73%	74%	73%	74%	71%	71%	71%	65%		
Borough Average YTD	74%	74%	73%	74%	73%	74%	73%	73%	73%	72%			

CAD Achievements for Lambeth SubCommands



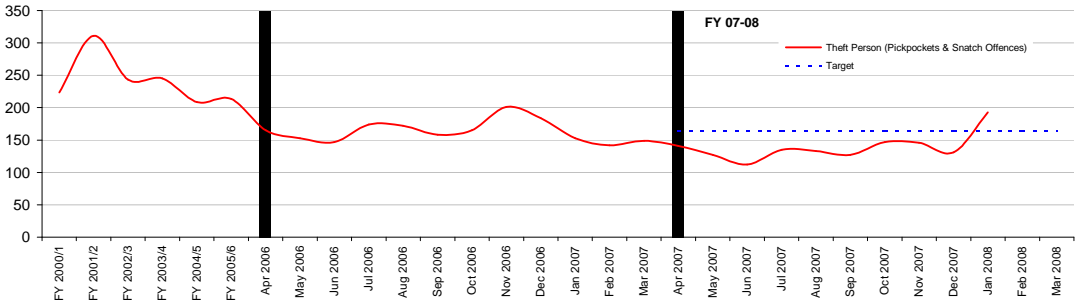
Community Police Consultative Group for Lambeth-Monthly Report Robbery Person Offences



Financial Year to Date Compared to Same Period in last Financial Year

Current Offences FYTD:	-18% Down	Monthly Average:	188
Current Detection Rate FYTD:	11% (Up from 10%)	Target Offences (Monthly):	220.6
Current SD Rate FYTD:	11% (Up from 10%)	Sanct Detections Target:	14%
		Detections Target:	0%

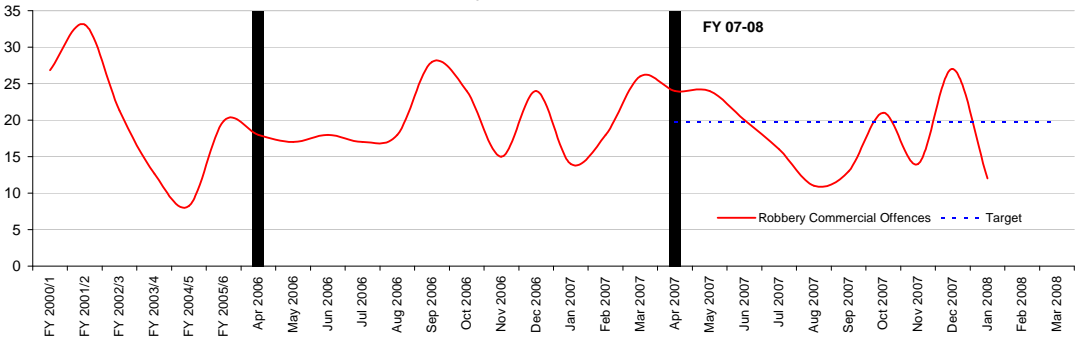
Theft Person (Pickpockets & Snatch Offences)



Financial Year to Date Compared to Same Period in last Financial Year

Current Offences FYTD:	-17% Down	Monthly Average:	139
Current Detection Rate FYT:	2% (Down from 2%)	Target Offences (Monthly):	164
Current SD Rate FYTD:	2% (Down from 2%)	Sanct Detections Target:	0.0
		Detections Target:	0%

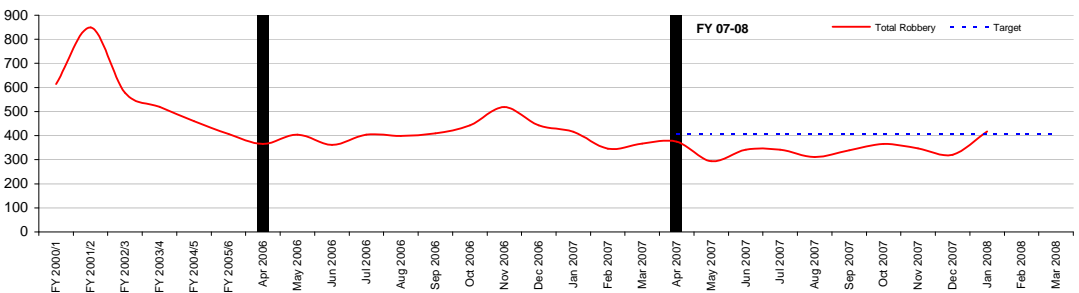
Robbery Commercial Offences



Financial Year to Date Compared to Same Period in last Financial Year

Current Offences FYTD:	-6% Down	Monthly Average:	18.2
Current Detection Rate FYT:	17% (Down from 28%)	Target Offences (Monthly):	20
Current SD Rate FYTD:	17% (Down from 28%)	Sanct Detections Target:	0.0
		Detections Target:	0%

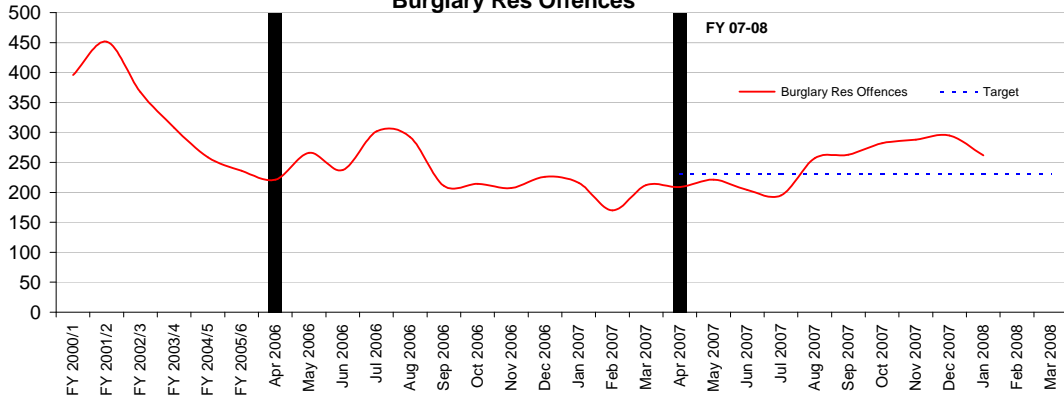
Total Robbery Offences



Financial Year to Date Compared to Same Period in last Financial Year

Current Offences FYTD:	-17% Down	Monthly Average:	345.3
Current Detection Rate FYT:	8% (Down from 8%)	Target (Monthly):	406
Current SD Rate FYTD:	8% (Down from 8%)	Detections Target:	0.0
		Sanct Detect Target:	14%

Community Police Consultative Group for Lambeth-Monthly Report Burglary Res Offences

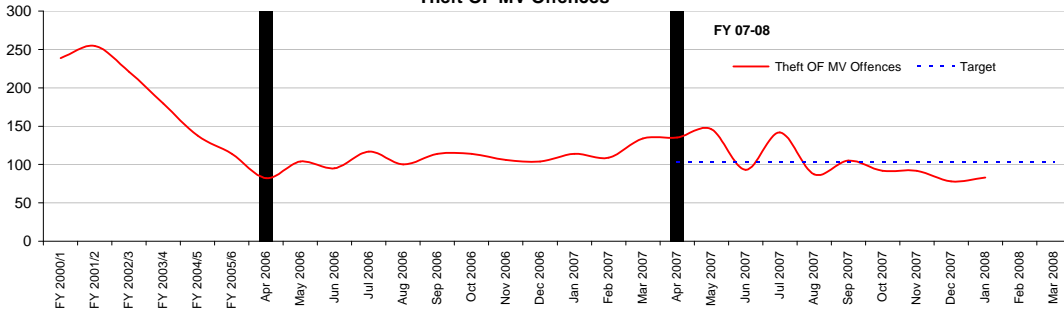


Financial Year to Date Compared to Same Period in last Financial Year
Current Offences FYTD: 4% Up

Current Detection Rate FYT 8% (Down from 9%)
Current SD Rate FYTD: 8% (Down from 9%)

Monthly Average: 248
Target (Monthly): 231
Detections Target: 0.0
Sanct Detect Target: 20%

Theft OF MV Offences

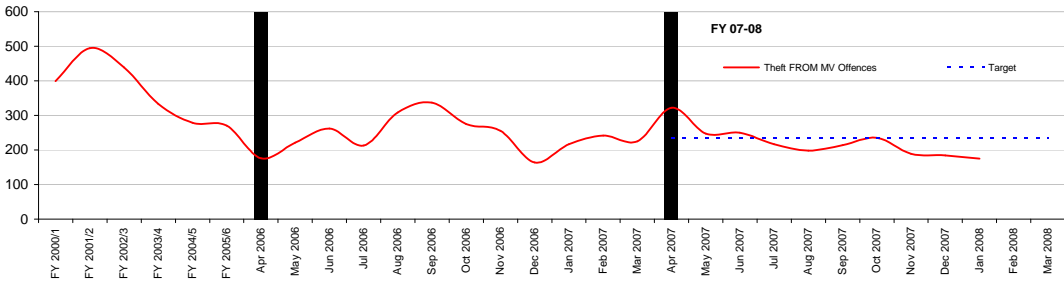


Financial Year to Date Compared to Same Period in last Financial Year
Current Offences FYTD: 0% Up

Current Detection Rate FYT 8% (Up from 6%)
Current SD Rate FYTD: 8% (Up from 6%)

Monthly Average: 105
Target (Monthly): 103
Detections Target: 0.0
Sanct Detect Target: 0%

Theft FROM MV Offences

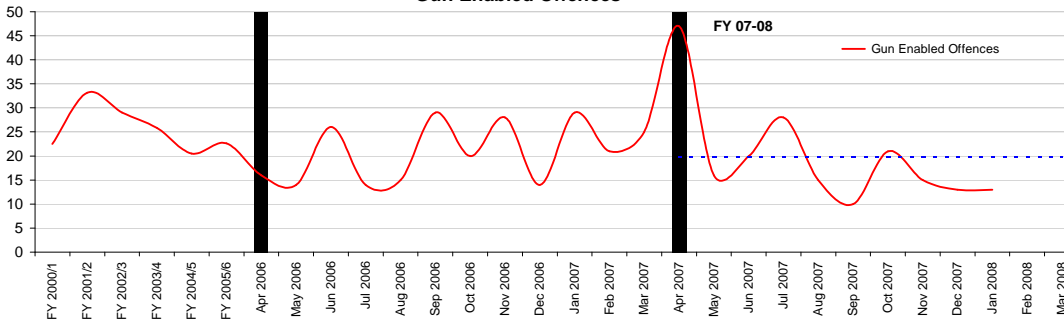


Financial Year to Date Compared to Same Period in last Financial Year
Current Offences FYTD: -8% Down

Current Detection Rate FY 4% (Up from 3%)
Current SD Rate FYTD: 4% (Up from 3%)

Monthly Average: 223
Target (Monthly): 233
Detections Target: 0.0
Sanct Detect Target: 0%

Gun Enabled Offences

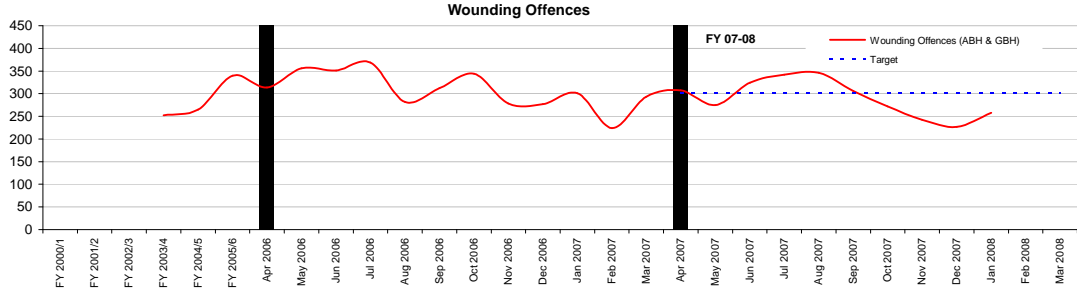


Financial Year to Date Compared to Same Period in last Financial Year
Current Offences FYTD: -3% Down

Current Detection Rate FYT 20% (Down from 33%)
Current SD Rate FYTD: 20% (Down from 33%)

Monthly Average: 20
Target (Monthly): 20
Detections Target: 0.0
Sanct Detect Target: 0%

Community Police Consultative Group for Lambeth-Monthly Report



Financial Year to Date Compared to Same Period in last Financial Year

Current Offences FYTD: -9% Down

Monthly Average:

290

Target (Monthly):

302

Current Detection Rate FYT 23% (Up from 23%)

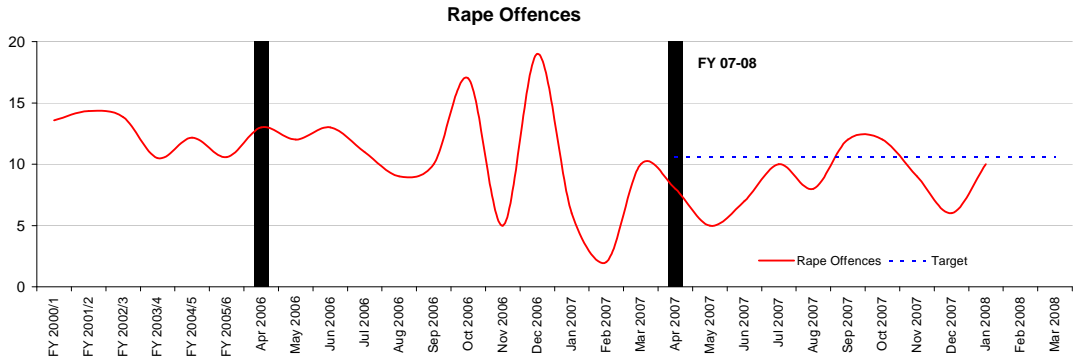
Detections Target:

0.0

Current SD Rate FYTD: 23% (Up from 22%)

Sanct Detect Target:

0%



Financial Year to Date Compared to Same Period in last Financial Year

Current Offences FYTD: -24% Down

Monthly Average:

9

Target (Monthly):

11

Current Detection Rate FYT 33% (Up from 21%)

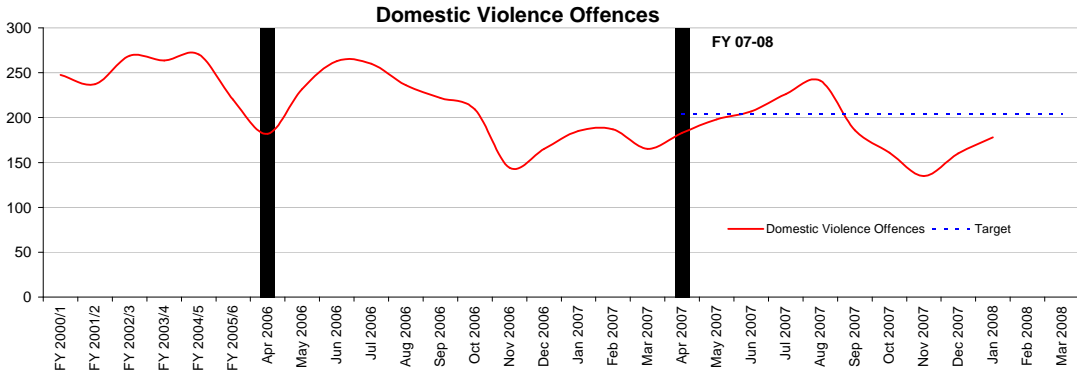
Detections Target:

0.0

Current SD Rate FYTD: 33% (Up from 20%)

Sanct Detect Target:

30%



Financial Year to Date Compared to Same Period in last Financial Year

Current Offences FYTD: -11% Down

Monthly Average:

188

Target (Monthly):

204

Current Detection Rate FY 37% (Up from 35%)

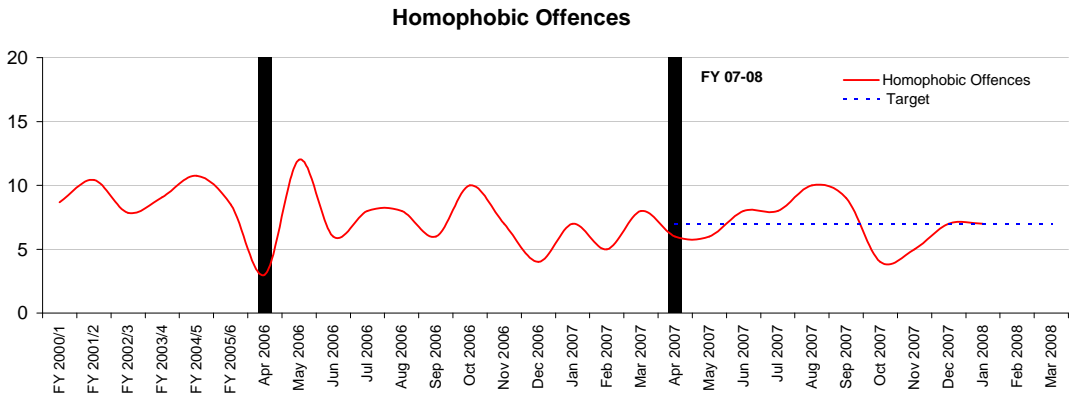
Detections Target:

0%

Current SD Rate FYTD: 37% (Up from 34%)

Sanct Detect Target:

40%



Financial Year to Date Compared to Same Period in last Financial Year

Current Offences FYTD: -1% Down

Monthly Average:

7

Target (Monthly):

7

Current Detection Rate FY 17% (Down from 24%)

Detections Target:

0%

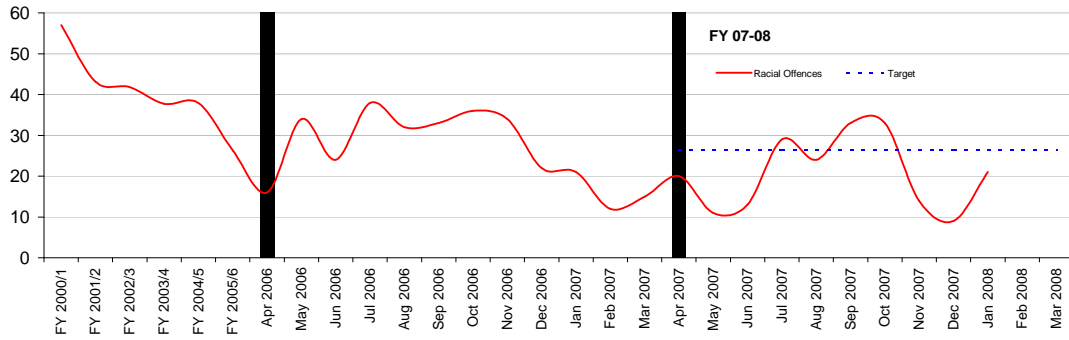
Current SD Rate FYTD: 17% (Down from 24%)

Sanct Detect Target:

33%

Community Police Consultative Group for Lambeth-Monthly Report

Racial Offences



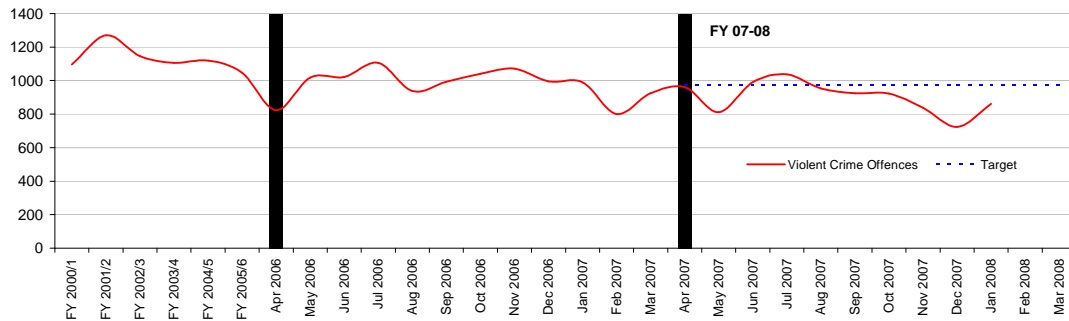
Financial Year to Date Compared to Same Period in last Financial Year

Current Offences FYTD: -29% Down

Monthly Average:	21
Target (Monthly):	26
Detections Target:	0%
Sanct Detect Target:	36%

Current Detection Rate FY 45% (Up from 39%)
Current SD Rate FYTD: 45% (Up from 39%)

Violent Offences



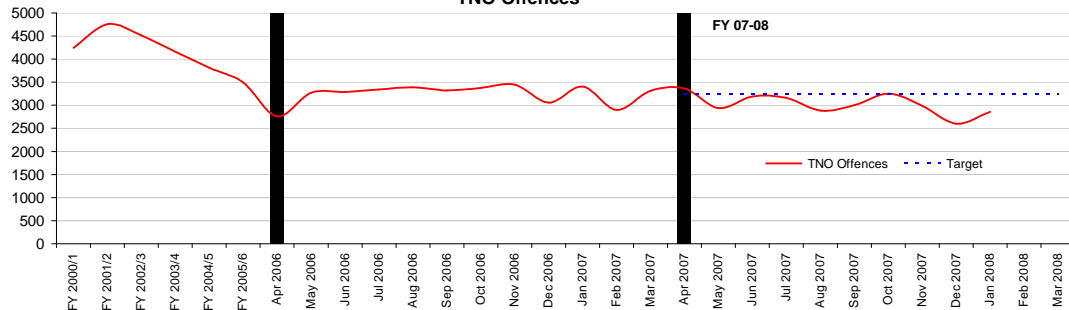
Financial Year to Date Compared to Same Period in last Financial Year

Current Offences FYTD: -10% Down

Monthly Average:	903
Target (Monthly):	977
Detections Target:	0%
Sanct Detect Target:	0%

Current Detection Rate FY 28% (Up from 25%)
Current SD Rate FYTD: 28% (Up from 25%)

TNO Offences



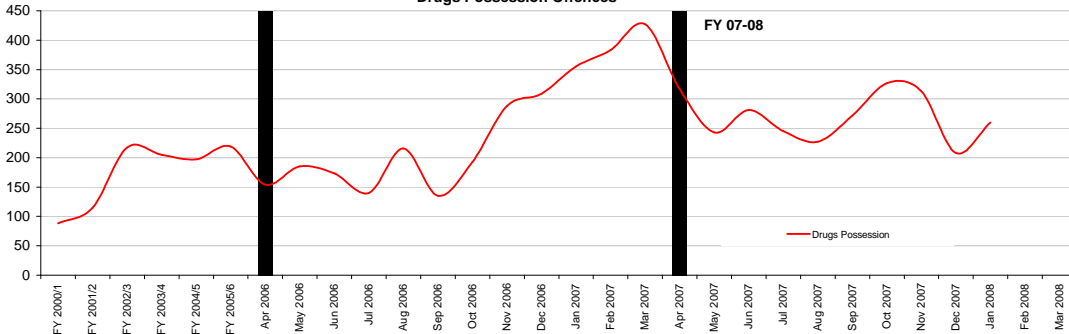
Financial Year to Date Compared to Same Period in last Financial Year

Current Offences FYTD: -7% Down

Monthly Average:	3023
Target (Monthly):	3239
Detections Target:	0%
Sanct Detect Target:	24%

Current Detection Rate FY 25% (Up from 21%)
Current SD Rate FYTD: 25% (Up from 21%)

Drugs Possession Offences



Financial Year to Date Compared to Same Period in last Financial Year

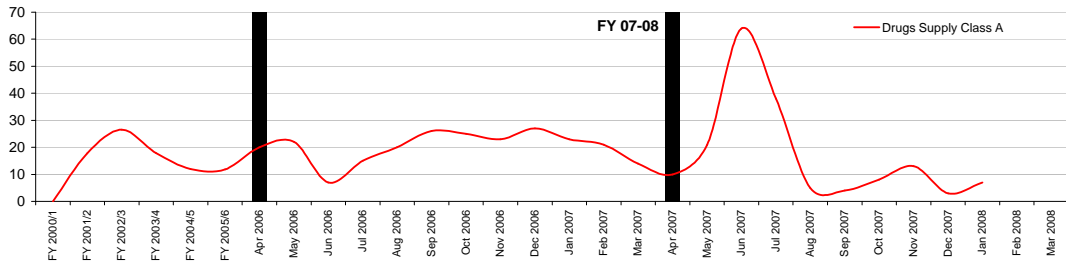
Current Offences FYTD: 25% Up

Monthly Average:	269
Target (Monthly):	247
Detections Target:	0%
Sanct Detect Target:	0%

Current Detection Rate FY 99% (Up from 88%)
Current SD Rate FYTD: 99% (Up from 88%)

Community Police Consultative Group for Lambeth-Monthly Report

Drugs Supply Class A Offences



Financial Year to Date Compared to Same Period in last Financial Year

Supply

Current Offences FYTD: -17% Down

Current Detection Rate FY NA

Current SD Rate FYTD: 12% (Down from 13%)

Monthly Average:

Target (Monthly):

Detections Target:

Sanct Detect Target:

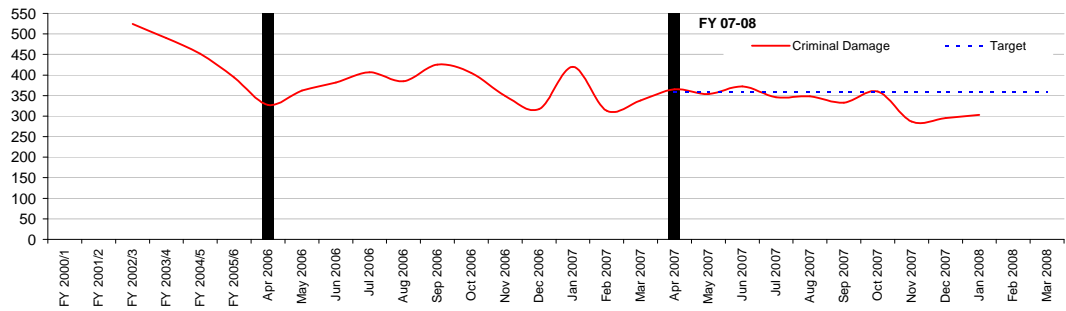
17

20

0%

0%

Criminal Damage Offences



Financial Year to Date Compared to Same Period in last Financial Year

Current Offences FYTD: -11% Down

Current Detection Rate FY 12% (Down from 86%)

Current SD Rate FYTD: 23% (Up from 21%)

Monthly Average:

Target Offences (Monthly):

Sanct Detections Target

Detections Target:

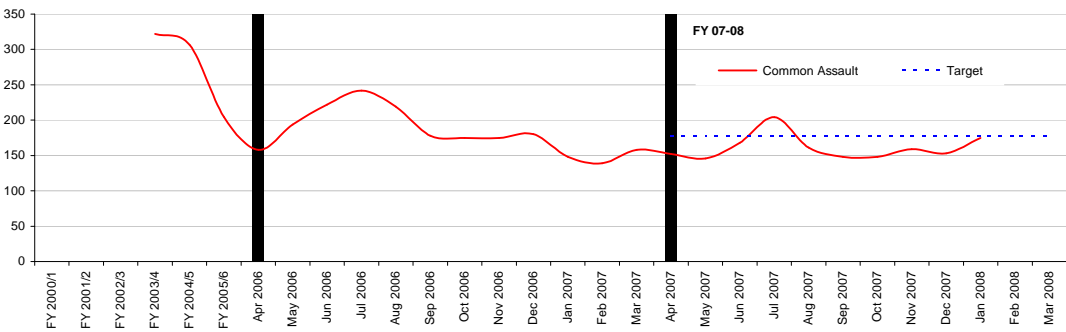
336

358

0%

0%

Common Assault Offences



Financial Year to Date Compared to Same Period in last Financial Year

Current Offences FYTD: -15% Down

Current Detection Rate FY 23% (Down from 95%)

Current SD Rate FYTD: 1% (Down from 2%)

Monthly Average:

Target Offences (Monthly):

Sanct Detections Target

Detections Target:

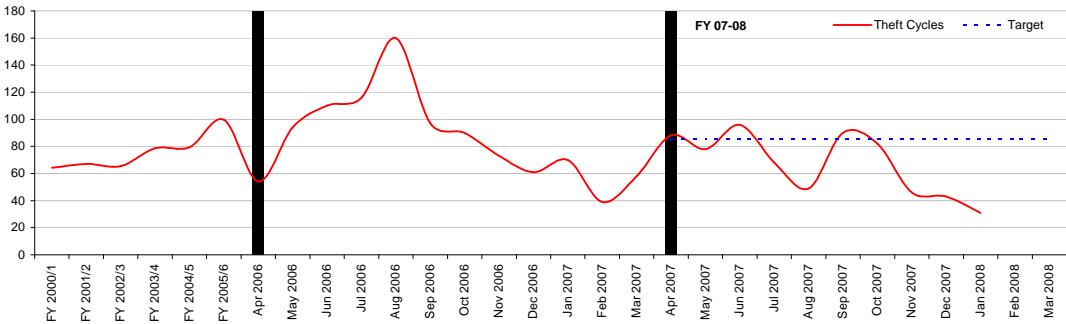
161

177

0%

0%

Theft Cycle Offences



Financial Year to Date Compared to Same Period in last Financial Year

Current Offences FYTD: -27% Down

Current Detection Rate FY 1% (Down from 39%)

Current SD Rate FYTD: 17% (Down from 28%)

Monthly Average:

Target Offences (Monthly):

Sanct Detections Target

Detections Target:

67

85

0%

0%

Abstractions per Month

2007 -2008

Date	Brixton			Kennington			Streatham			Totals		
	Insp	PS	PC	Insp	PS	PC	Insp	PS	PC	Insp	PS	PC
April	6	45	206	12	51	258	5	36	173	23	132	637
May	6	31	141	3	25	128	2	30	134	11	86	403
June	2	34	137	1	26	107	5	24	106	8	84	350
July	5	43	194	4	35	197	4	32	189	13	110	580
August	17	69	400	13	65	366	9	55	318	39	189	1084
September	4	39	174	8	32	171	0	19	107	12	90	452
October	3	31	112	4	31	142	2	21	88	9	83	342
November	6	38	162	5	31	166	3	18	100	14	87	428
December	6	39	150	7	37	148	2	23	108	15	99	406
January	6	31	127	5	27	121	1	22	92	12	80	340

Financial Year To Date Crime Performance

	FY to Jan 2008 (ytd)	FY to Jan 2007 (ytd)	Difference	% Change
Total Crimes	30,234	32,654	-2,420	-7.4%
Homicide	21	13	8	61.5%
Violence Against the Person (Total)	6,592	7,114	-522	-7.3%
Rape	102	115	-13	-11.3%
Other Sexual	270	279	-9	-3.2%
Robbery (Total)	2,061	2,490	-429	-17.2%
Robbery (Person)	1,879	2,297	-418	-18.2%
Robbery (Business)	182	193	-11	-5.7%
Burglary (Total)	3,200	3,158	42	1.3%
Burglary Residential	2,476	2,392	84	3.5%
Burglary Non-Residential	724	766	-42	-5.5%
Gun Enabled Crime	198	205	-7	-3.4%
Motor Vehicle Crime	3,284	3,479	-195	-5.6%
Domestic Crime	1,875	2,098	-223	-10.6%
Racist Crime	207	290	-83	-28.6%
Homophobic Crime	70	71	-1	-1.4%

Borough Workforce Targets – Police officers

- Brixton 278
- Kennington 288
- Streatham 206
- Pan Borough 150

Lambeth Monthly Crime Table

January 2008		Offences		Sanctioned Detections				Non-Sanction Detections				Detections & Detection Rate				Persons Accused	
			Lambeth	MPS Total		Lambeth			MPS Total		Lambeth			MPS Total		Lambeth	MPS Total
Violence Against the Person		13960	596	5330	38.18%	214	35.91%	100.00%	0.01%	0.00%	0.00%	5331	38.19%	214	35.91%	3054	121
	Murder	10	2	11	110.00%	3	150.00%	100.00%	10.00%	0.00%	0.00%	12	120.00%	3	150.00%	11	2
	GBH	391	24	151	38.62%	8	33.33%	0.00%	0.00%	0.00%	0.00%	151	38.62%	8	33.33%	105	6
	ABH	5292	228	1687	31.88%	66	28.95%	0.00%	0.00%	0.00%	0.00%	1687	31.88%	66	28.95%	997	33
	Common Assault	3375	150	921	27.29%	26	17.33%	0.00%	0.00%	0.00%	0.00%	921	27.29%	26	17.33%	511	16
	Offensive Weapon	514	31	492	95.72%	34	109.68%	0.00%	0.00%	0.00%	0.00%	492	95.72%	34	109.68%	337	21
	Harassment	3579	114	1648	46.05%	55	48.25%	0.00%	0.00%	0.00%	0.00%	1648	46.05%	55	48.25%	889	31
	Other Violence	799	47	420	52.57%	22	46.81%	0.00%	0.00%	0.00%	0.00%	420	52.57%	22	46.81%	204	12
Sexual Offences		750	40	214	28.53%	8	20.00%	0.00%	0.00%	0.00%	0.00%	214	28.53%	8	20.00%	151	6
	Rape	158	10	54	34.18%	2	20.00%	0.00%	0.00%	0.00%	0.00%	54	34.18%	2	20.00%	32	1
	Other Sexual	592	30	160	27.03%	6	20.00%	0.00%	0.00%	0.00%	0.00%	160	27.03%	6	20.00%	119	5
Robbery		3134	225	483	15.41%	25	11.11%	100.00%	0.03%	0.00%	0.00%	484	15.44%	25	11.11%	357	20
	Personal Property	2824	213	427	15.12%	24	11.27%	0.00%	0.00%	0.00%	0.00%	427	15.12%	24	11.27%	292	19
	Business Property	310	12	56	18.06%	1	8.33%	100.00%	0.32%	0.00%	0.00%	57	18.39%	1	8.33%	65	1
Burglary		8844	328	1028	11.62%	39	11.89%	0.00%	0.00%	0.00%	0.00%	1028	11.62%	39	11.89%	455	32
	Burglary in a Dwelling	5875	262	723	12.31%	27	10.31%	0.00%	0.00%	0.00%	0.00%	723	12.31%	27	10.31%	246	17
	Burglary in Other Buildings	2969	66	305	10.27%	12	18.18%	0.00%	0.00%	0.00%	0.00%	305	10.27%	12	18.18%	209	15
Theft and Handling		26999	955	3614	13.39%	82	8.59%	0.00%	0.00%	0.00%	0.00%	3614	13.39%	82	8.59%	1943	52
Motor Vehicle Crime		10555	258	1041	9.86%	7	2.71%	0.00%	0.00%	0.00%	0.00%	1041	9.86%	7	2.71%	244	4
	Theft/Taking of M/V	2857	83	268	9.38%	3	3.61%	0.00%	0.00%	0.00%	0.00%	268	9.38%	3	3.61%	139	2
	Theft from a Vehicle	7698	175	773	10.04%	4	2.29%	0.00%	0.00%	0.00%	0.00%	773	10.04%	4	2.29%	105	2
	M/V Interference & Tampering	270	7	23	8.52%	0	0.00%	0.00%	0.00%	0.00%	0.00%	23	8.52%	0	0.00%	12	0
Theft from Person		2635	193	91	3.45%	2	1.04%	0.00%	0.00%	0.00%	0.00%	91	3.45%	2	1.04%	71	2
	Snatches	664	56	27	4.07%	2	3.57%	0.00%	0.00%	0.00%	0.00%	27	4.07%	2	3.57%	15	2
	Picking Pockets etc	1971	137	64	3.25%	0	0.00%	0.00%	0.00%	0.00%	0.00%	64	3.25%	0	0.00%	56	0
	Theft from Shops	2815	71	1685	59.86%	38	53.52%	0.00%	0.00%	0.00%	0.00%	1685	59.86%	38	53.52%	1140	27
	Theft/Taking of Pedal Cycles	930	31	22	2.37%	1	3.23%	0.00%	0.00%	0.00%	0.00%	22	2.37%	1	3.23%	15	0
	Other Theft	9533	378	509	5.34%	18	4.76%	0.00%	0.00%	0.00%	0.00%	509	5.34%	18	4.76%	304	11
	Handling Stolen Goods	261	17	243	93.10%	16	94.12%	0.00%	0.00%	0.00%	0.00%	243	93.10%	16	94.12%	157	8
Fraud or Forgery		2922	78	670	22.93%	20	25.64%	0.00%	0.00%	0.00%	0.00%	670	22.93%	20	25.64%	344	11
	Counted per Victim	1419	26	177	12.47%	1	3.85%	0.00%	0.00%	0.00%	0.00%	177	12.47%	1	3.85%	88	2
	M/V Interference & Tampering	1503	52	493	32.80%	19	36.54%	0.00%	0.00%	0.00%	0.00%	493	32.80%	19	36.54%	256	9
Criminal Damage		8623	307	1160	13.45%	42	13.68%	0.00%	0.00%	0.00%	0.00%	1160	13.45%	42	13.68%	701	20
	Criminal Damage to a Dwelling	2213	120	342	15.45%	17	14.17%	0.00%	0.00%	0.00%	0.00%	342	15.45%	17	14.17%	206	9
	Criminal Damage to Other Bldg	838	33	166	19.81%	5	15.15%	0.00%	0.00%	0.00%	0.00%	166	19.81%	5	15.15%	101	1
	Criminal Damage to M/V	4233	110	360	8.50%	7	6.36%	0.00%	0.00%	0.00%	0.00%	360	8.50%	7	6.36%	214	3
	Other Criminal Damage	1339	44	292	21.81%	13	29.55%	0.00%	0.00%	0.00%	0.00%	292	21.81%	13	29.55%	180	7
Drugs		5595	273	5840	104.38%	264	96.7%	0.0%	0.0%	0.0%	0.0%	5840	104.38%	264	96.7%	1828	126
	Drug Trafficking	273	9	300	109.89%	22	244.44%	0.00%	0.00%	0.00%	0.00%	300	109.89%	22	244.44%	196	13
	Possession of Drugs	5287	260	5515	104.31%	236	90.77%	0.00%	0.00%	0.00%	0.00%	5515	104.31%	236	90.77%	1613	108
	Other Drug Offences	35	4	25	71.43%	6	150.00%	0.00%	0.00%	0.00%	0.00%	25	71.43%	6	150.00%	19	5
Other Notifiable Offences		884	55	595	67.31%	37	67.27%	0.00%	0.00%	0.00%	0.00%	595	67.31%	37	67.27%	434	22
	Going Equipped	52	3	51	98.08%	4	133.33%	0.00%	0.00%	0.00%	0.00%	51	98.08%	4	133.33%	33	2
	Other Notifiable	832	52	544	65.38%	33	63.46%	0.00%	0.00%	0.00%	0.00%	544	65.38%	33	63.46%	401	20
TOTAL NOTIFIABLE OFFENCES		71711	2857	18934	26.40%	731	25.59%	200.00%	0.00%	0.00%	0.00%	18936	26.41%	731	25.59%	9267	410

Sanction Detections = charge, caution, summon, TICs & FPNs, cannabis warning

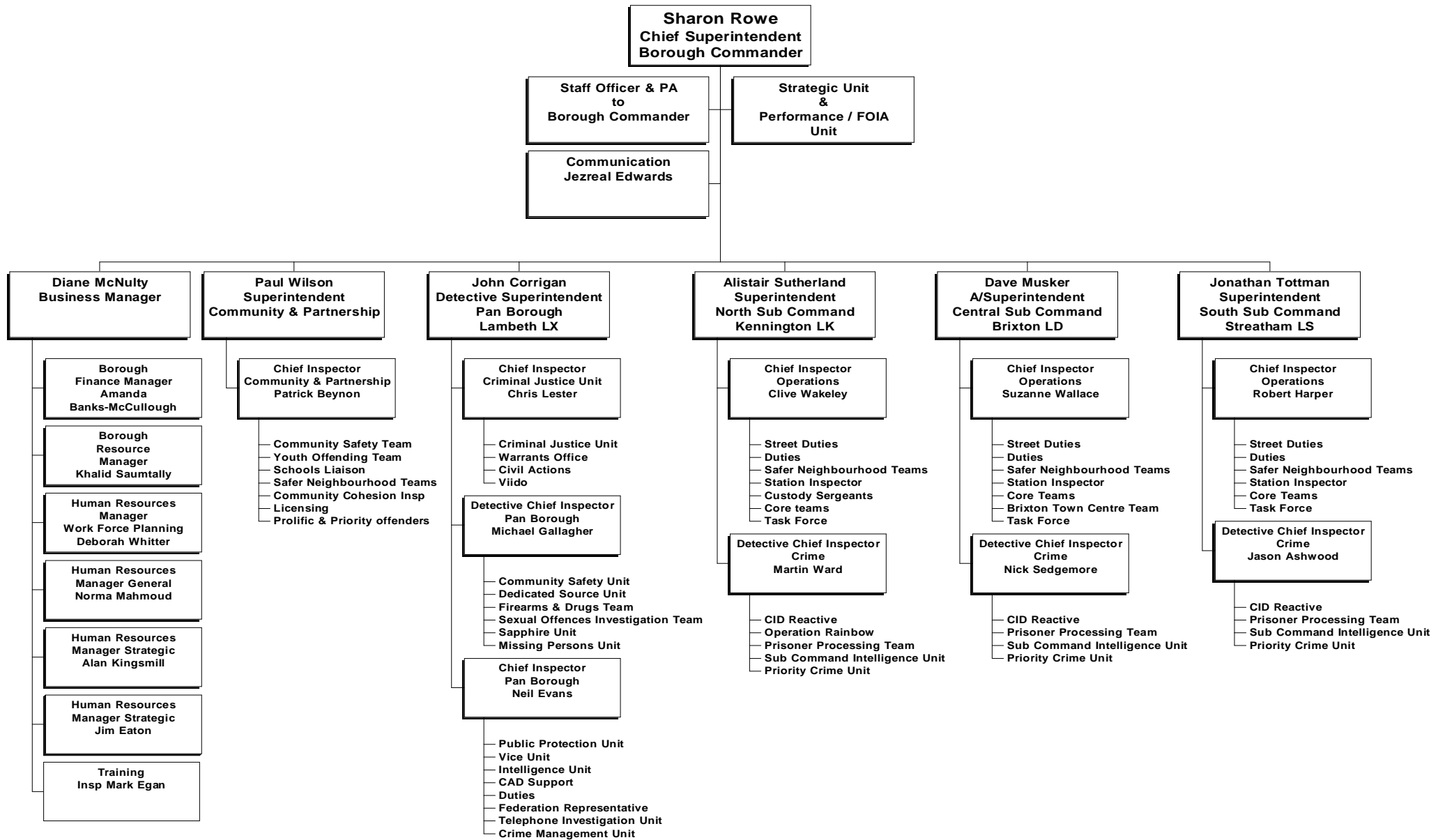
Non Sanctioned Detections = authority detections

Detections = Sanction Detections & Non Sanction Detections

*Motor Vehicle Crime = theft/taking of M/V + theft from a vehicle

**Theft Person = snatches + picking pockets

Lambeth Borough Police Structure



Glossary

'Sanctioned' and 'Non Sanctioned' Detection Definitions

A 'Sanctioned' Detection is where an allegation has resulted in either a charge, a summons, a caution, a formal warning, a youth reprimand or an offence being taken into consideration i.e. in addition to the charge for which the person is before a court, other offences can be admitted by the defendant and the court asked to take these offences into consideration in passing sentence.

A 'Non-Sanctioned' Detection is where a crime has been committed and recorded and: A suspect has been identified and interviewed by a police officer or, if an interview is not necessary to determine guilt, had at least been informed that the offence has been detected.

There must be sufficient evidence to charge the suspect with the crime.

If the victim subsequently refuses to give evidence, then a reason for this decision has been documented.

In the case where there is an identifiable victim, the victim must have been informed that the crime has been detected or in the case of a child, the parent or guardian has been informed.

Total Robbery

Combination of Robbery and Theft-Snatch

Robbery

Theft where force or threat of force is made to a person at the time or immediately before in order to steal

Theft - Snatch

Theft where force is applied to the object carried by a person ie snatching an handbag or phone from a person

Motor Vehicle Crime

Combination of theft from vehicles or taking of vehicles with the owners consent or theft of a motor vehicle

Gun Enabled Crime

A crime which is a specific listed offence ie assaults, thefts or sexual offences whilst in possession of a firearm or imitation firearm and the firearm has been seen or used

ABH

Assault where cuts bruises and other types of minor injuries are sustained

GBH

Serious assault resulting in permanent injury broken bones

TNO Total Notifiable Offences

All notifiable offences which are recorded by police and a crime report is generated

I-Call

Police graded response to a call received in the Police Control Room. Immediate response within 12mins. For incidents where a suspect is still on scene/nearby or immediate danger is perceived

CAD

Computer aided dispatch which is the computer system used within Metropolitan Police Control rooms to record incidents