

# Community Police Consultative Group for Lambeth



## Monthly Police Report

**CPCGLambeth**

**August 2009**

(Starting from April Data)

**Financial Year 2009-2010**

The CPCG report will be produced on a Monthly basis by the Lambeth Police Performance & Review Unit

**Not Protectively Marked**



## INDEX

### LAMBETH BOROUGH

<b>Page 1</b>	<b>CAD Achievements</b>
<b>Pages 2-24</b>	<b>Classified &amp; Confirmed Offences:</b> Robbery Offences Serious Youth Violence Theft Person Theft of MV Theft From MV Other Serious Sexual Rape Offences Possession Of Drugs Murder Most Serious Violence Assault with Injury Burglary Res Criminal Damage Offences Gun Crime Knife Crime Theft Of Pedal Cycles Domestic Offences Homophobic Offences Racist Offences TNO Tier 2 Offences Serious Wounding Drug Supply
<b>Pages 25-31</b>	<b>Charts of Above Offences</b>
<b>Page 32</b>	<b>Aid Requirements / Performance FYTD</b>
<b>Page 33-34</b>	<b>New &amp; Old Organogram</b>
<b>Page 35</b>	<b>Glossary</b>

**~~Steps Data to be part of report on a Quarterly basis~~**

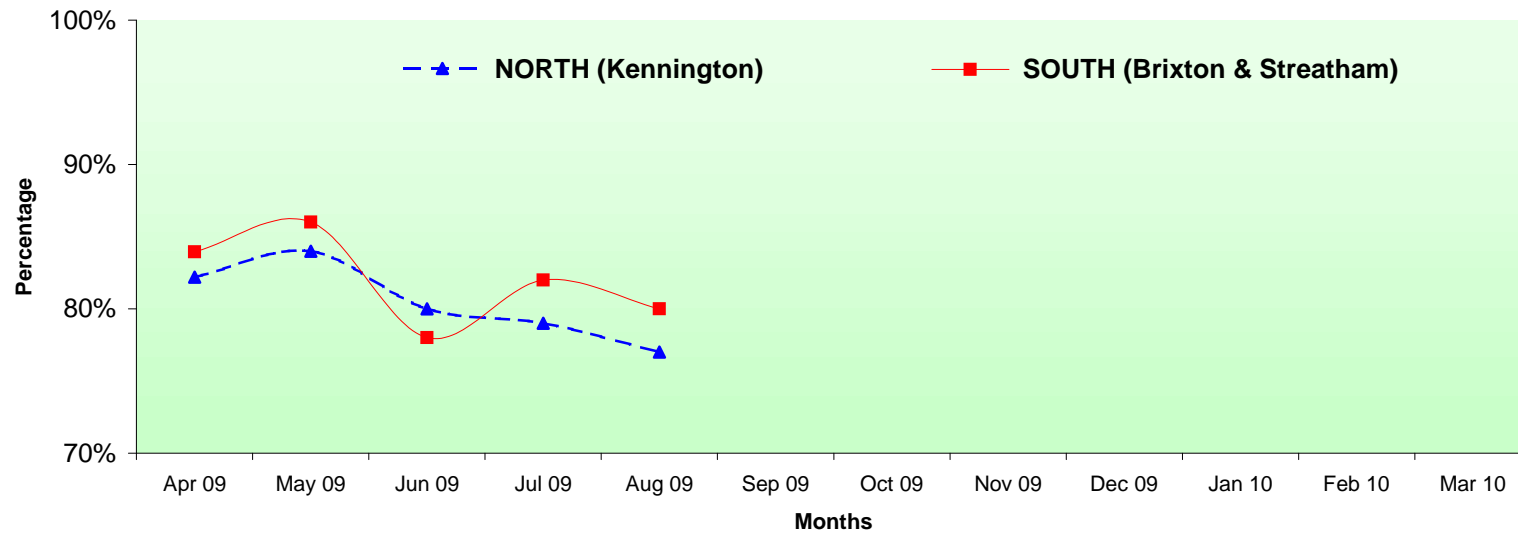
Protective Marking	Not Protectively Marked
FOIA Exemption	None
Publication Scheme	No
Title and Version	Lambeth Community and Police Consultative Group Monthly Report
Purpose	To Inform Relevant Staff and Community of Performance
Relevant To	All Staff on Lambeth BOCU and community members
Author and warrant / pay number	Trevor Peplow PC 394 LX
OCU / Branch / Unit	Lambeth Police Performance and Review Unit @ Frank O'Neill House
Summary	Report is produced on a monthly basis
Date Created	August 2009
Review Date	Monthly as Required

# CAD Achievement Trends

Call Type	Sector / Month	Apr 2009	May 2009	Jun 2009	Jul 2009	Aug 2009	Sep 2009	Oct 2009	Nov 2009	Dec 2009	Jan 2010	Feb 2010	Mar 2010
I CALLS	NORTH (Kennington)	82%	84%	80%	79%	77%							
	<b>North Average YTD</b>	<b>82%</b>	<b>83%</b>	<b>82%</b>	<b>81%</b>	<b>80%</b>							
	SOUTH (Brixton & Streatham)	84%	86%	78%	82%	80%							
	<b>South Average YTD</b>	<b>84%</b>	<b>85%</b>	<b>83%</b>	<b>82%</b>	<b>82%</b>							
	<b>Borough Average p/m</b>	<b>83%</b>	<b>85%</b>	<b>79%</b>	<b>81%</b>	<b>79%</b>							
	<b>Borough Average YTD</b>	<b>83%</b>	<b>84%</b>	<b>82%</b>	<b>82%</b>	<b>81%</b>							

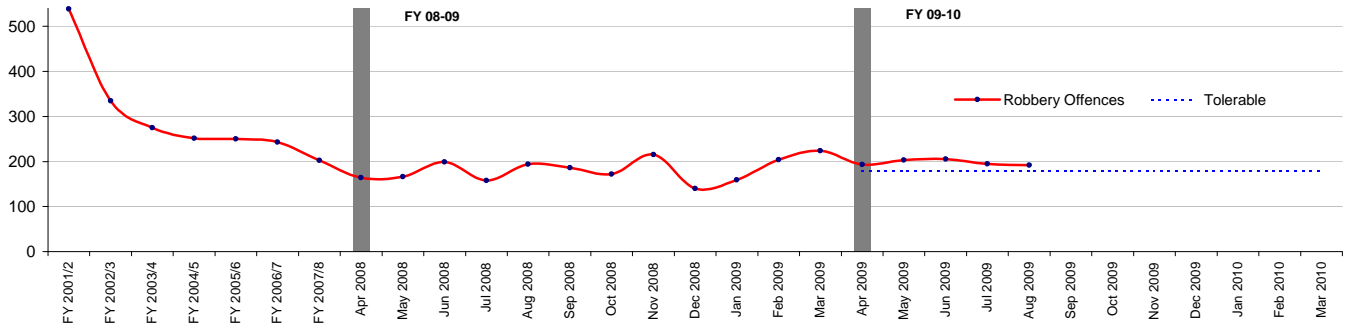
Average Response Time for Immediate Calls: 12 mins

## CAD Achievements for Lambeth Sub Commands



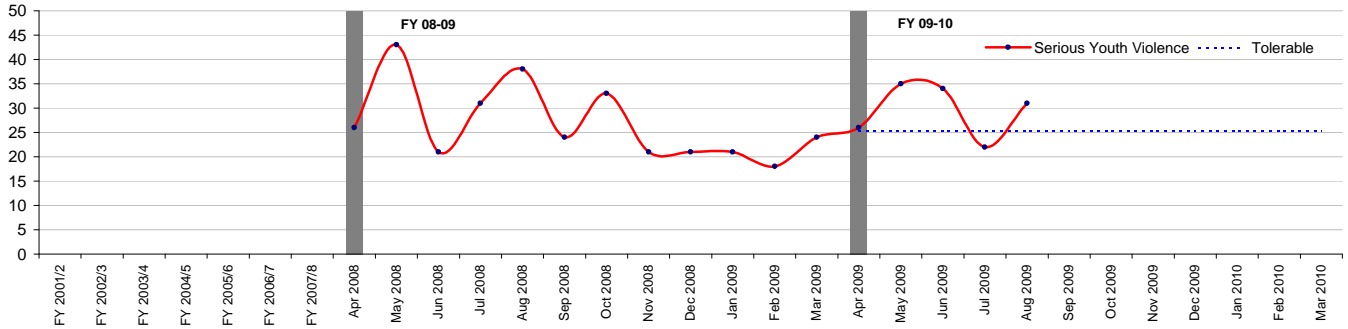
## Community Police Consultative Group for Lambeth-Monthly Report

### Robbery Offences



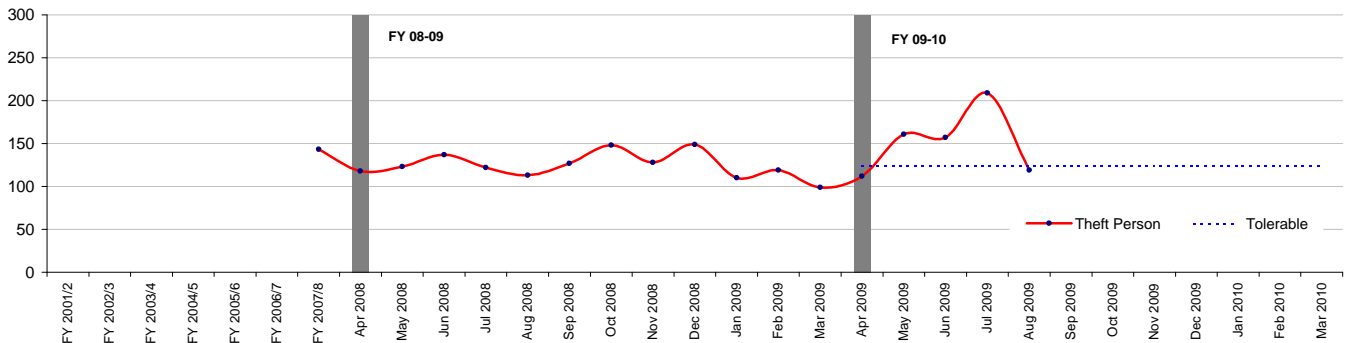
Robbery Offences	
Financial Year to Date Compared to Same Period in last Financial Year	
<b>Current Offences FYTD:</b>	12% Up
<b>Current SD Rate FYTD:</b>	9% (Down from 11%)
<b>Monthly Average:</b>	197.6
<b>Target Offences (Monthly):</b>	178.1
<b>SD Target</b>	19%

### Serious Youth Violence



Serious Youth Violence	
Financial Year to Date Compared to Same Period in last Financial Year	
<b>Current Offences FYTD:</b>	-7% Down
<b>Current SD Rate FYTD:</b>	0% (Down from 0%)
<b>Monthly Average:</b>	29.6
<b>Target Offences (Monthly):</b>	25.4
<b>SD Target</b>	0%

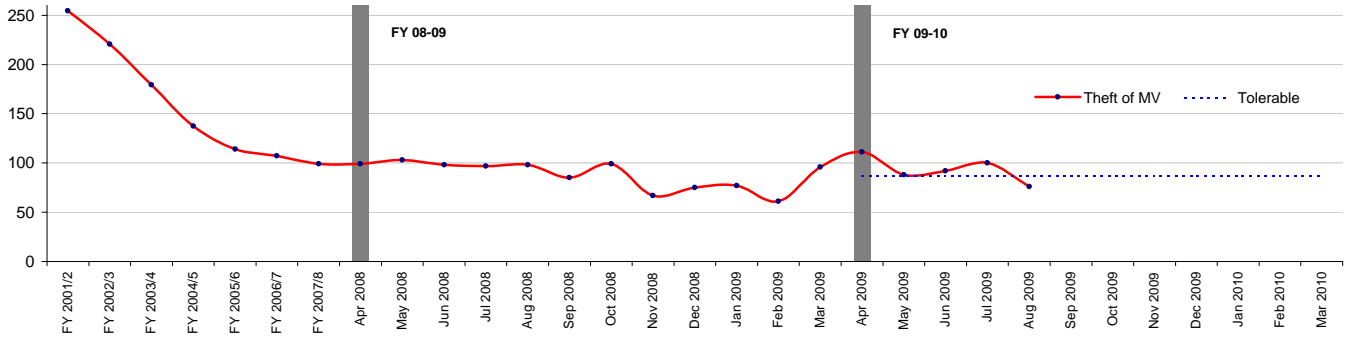
### Theft Person



Theft Person	
Financial Year to Date Compared to Same Period in last Financial Year	
<b>Current Offences FYTD:</b>	24% Up
<b>Current SD Rate FYTD:</b>	2% (Down from 3%)
<b>Monthly Average:</b>	151.6
<b>Target Offences (Monthly):</b>	124.4
<b>SD Target</b>	0%

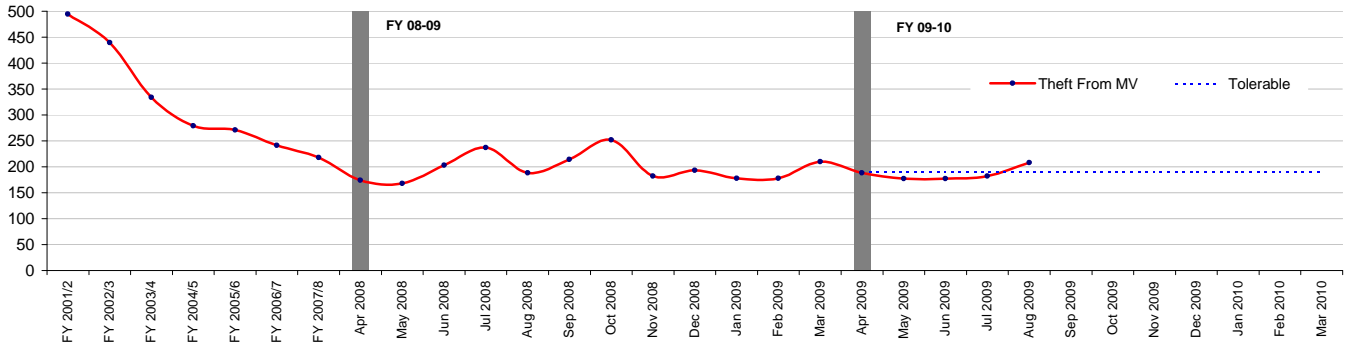
## Community Police Consultative Group for Lambeth-Monthly Report

### Theft of MV



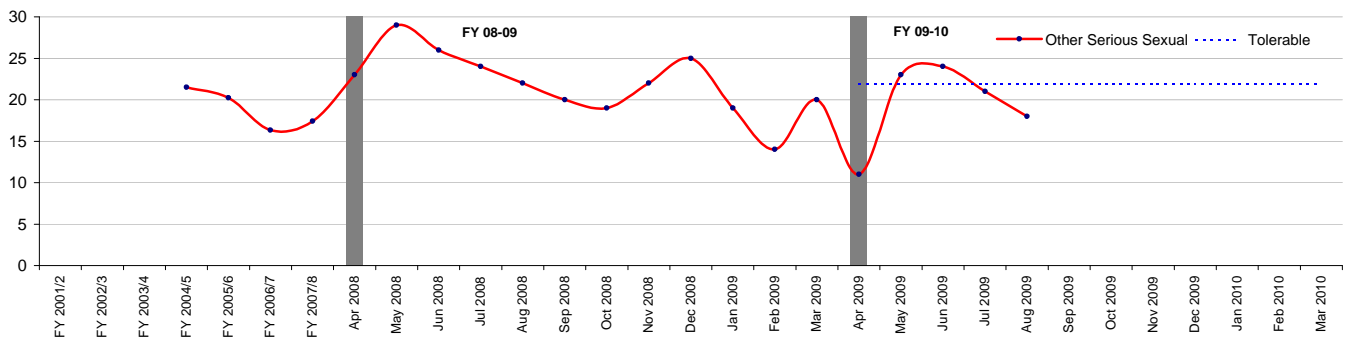
Theft of MV	
<i>Financial Year to Date Compared to Same Period in last Financial Year</i>	
<b>Current Offences FYTD:</b>	-6% Down
<b>Current SD Rate FYTD:</b>	7% (Up from 6%)
<b>Monthly Average:</b>	93.4
<b>Target Offences (Monthly):</b>	86.4
<b>SD Target</b>	7%

### Theft From MV



Theft From MV	
<i>Financial Year to Date Compared to Same Period in last Financial Year</i>	
<b>Current Offences FYTD:</b>	-4% Down
<b>Current SD Rate FYTD:</b>	4% (Up from 2%)
<b>Monthly Average:</b>	186.4
<b>Target Offences (Monthly):</b>	190.4
<b>SD Target</b>	7%

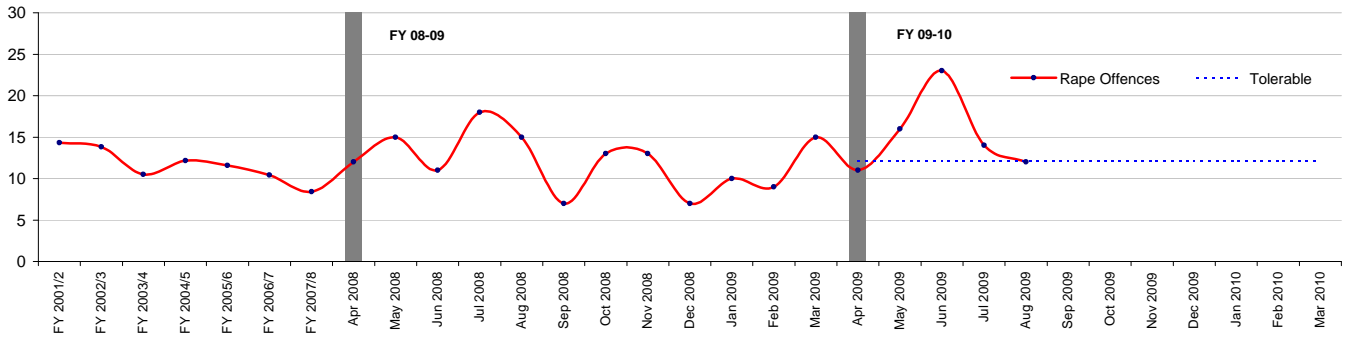
### Other Serious Sexual



Other Serious Sexual	
<i>Financial Year to Date Compared to Same Period in last Financial Year</i>	
<b>Current Offences FYTD:</b>	-22% Down
<b>Current SD Rate FYTD:</b>	10% (Down from 19%)
<b>Monthly Average:</b>	19.4
<b>Target Offences (Monthly):</b>	21.9
<b>SD Target</b>	0%

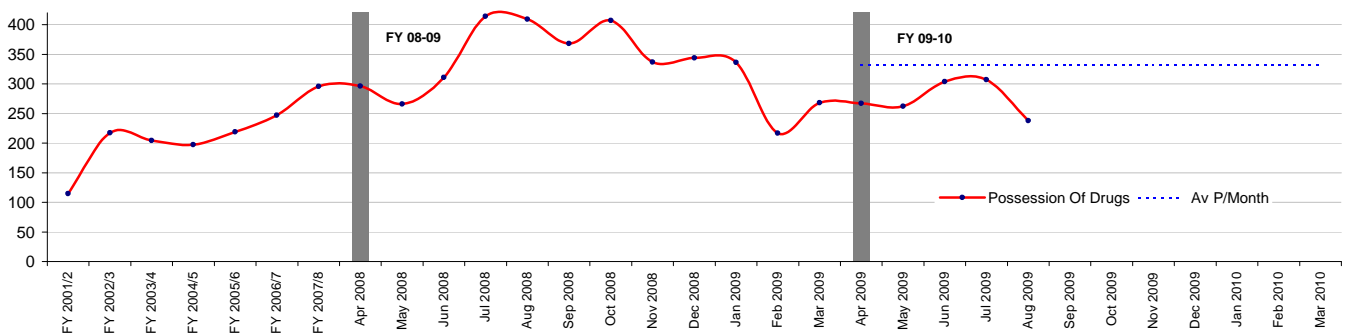
## Community Police Consultative Group for Lambeth-Monthly Report

### Rape Offences



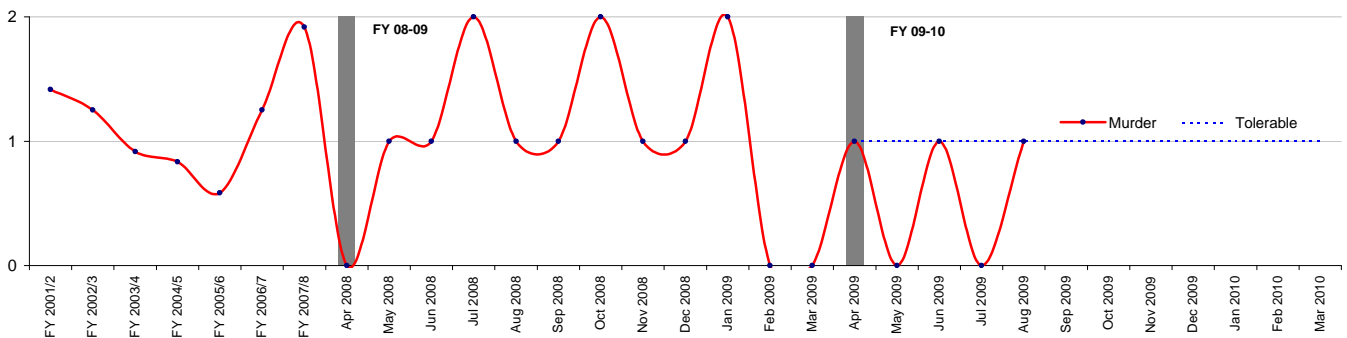
Rape Offences	
<i>Financial Year to Date Compared to Same Period in last Financial Year</i>	
<b>Current Offences FYTD:</b>	7% Up
<b>Current SD Rate FYTD:</b>	26% (Up from 25%)
<b>Monthly Average:</b>	15.2
<b>Target Offences (Monthly):</b>	12.1
<b>SD Target</b>	35%

### Possession Of Drugs



Possession Of Drugs	
<i>Financial Year to Date Compared to Same Period in last Financial Year</i>	
<b>Current Offences FYTD:</b>	-19% Down
<b>Current SD Rate FYTD:</b>	84% (Down from 89%)
<b>Monthly Average:</b>	275.6
<b>Target Offences (Monthly):</b>	331.1
<b>SD Target</b>	0%

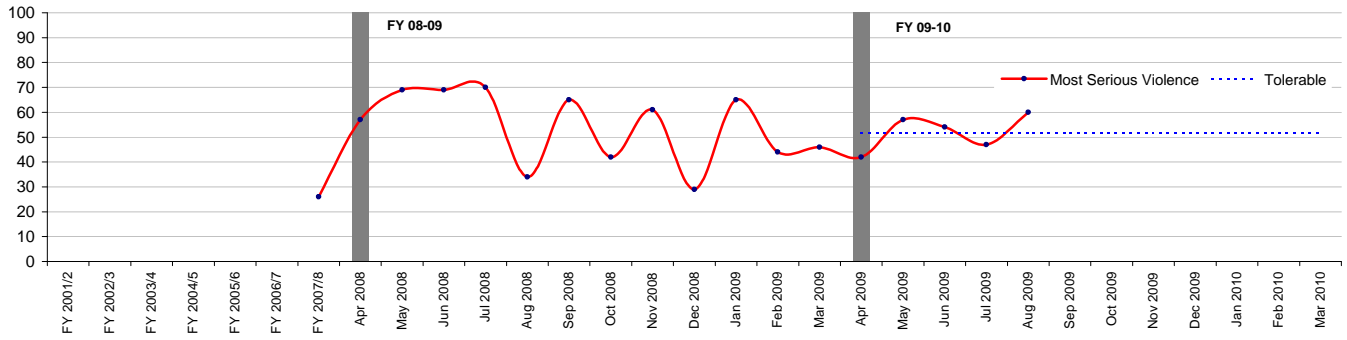
### Murder



Murder	
<i>Financial Year to Date Compared to Same Period in last Financial Year</i>	
<b>Current Offences FYTD:</b>	-40% Down
<b>Current SD Rate FYTD:</b>	100% (Up from 80%)
<b>Monthly Average:</b>	0.6
<b>Target Offences (Monthly):</b>	1.0
<b>SD Target</b>	0%

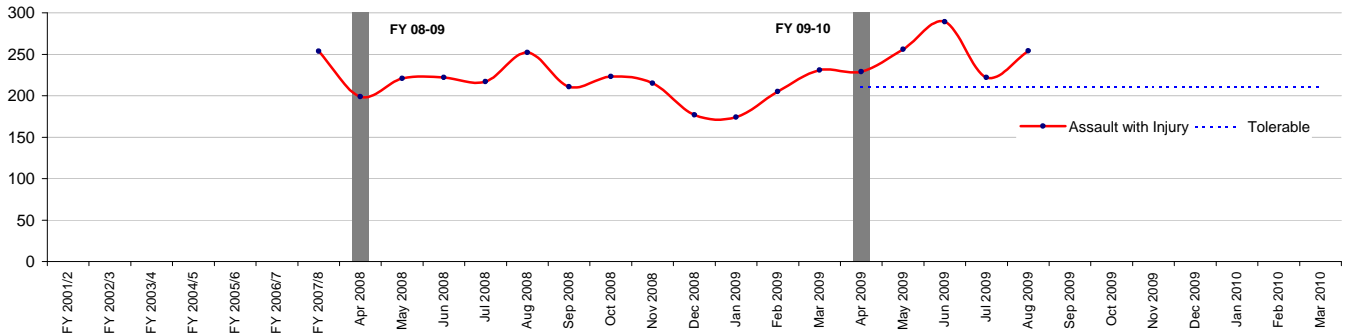
## Community Police Consultative Group for Lambeth-Monthly Report

### Most Serious Violence



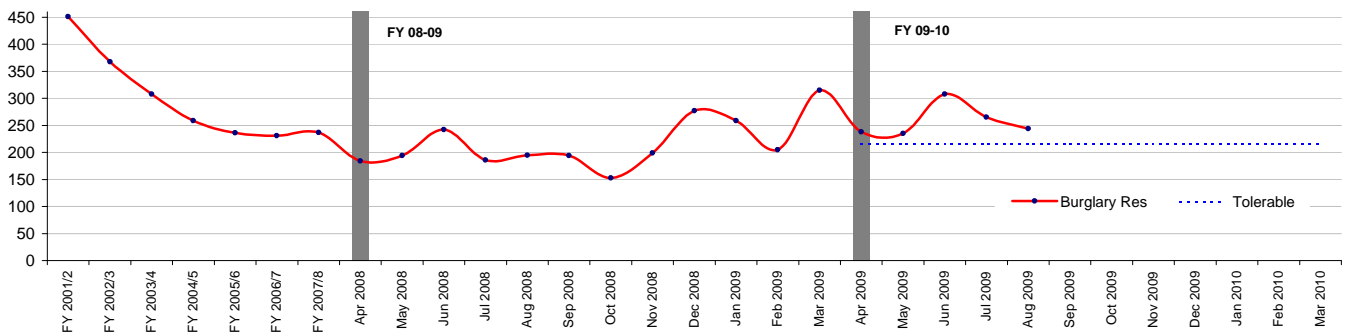
Most Serious Violence	
<i>Financial Year to Date Compared to Same Period in last Financial Year</i>	
<b>Current Offences FYTD:</b>	-13% Down
<b>Current SD Rate FYTD:</b>	30% (Up from 26%)
<b>Monthly Average:</b>	52
<b>Target Offences (Monthly):</b>	51.5
<b>SD Target</b>	32%

### Assault with Injury



Assault with Injury	
<i>Financial Year to Date Compared to Same Period in last Financial Year</i>	
<b>Current Offences FYTD:</b>	13% Up
<b>Current SD Rate FYTD:</b>	25% (Down from 32%)
<b>Monthly Average:</b>	250
<b>Target Offences (Monthly):</b>	210.1
<b>SD Target</b>	0%

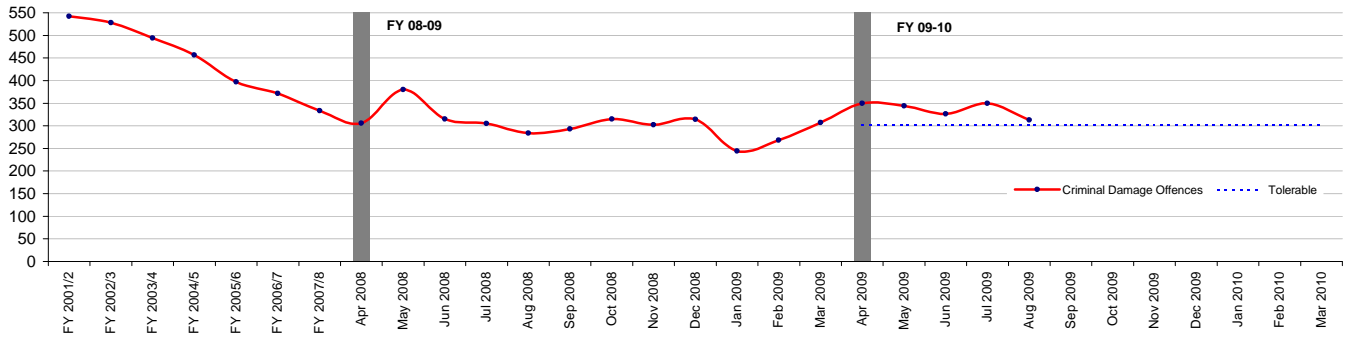
### Burglary Res



Burglary Res	
<i>Financial Year to Date Compared to Same Period in last Financial Year</i>	
<b>Current Offences FYTD:</b>	29% Up
<b>Current SD Rate FYTD:</b>	17% (Up from 8%)
<b>Monthly Average:</b>	258
<b>Target Offences (Monthly):</b>	214.7
<b>SD Target</b>	16%

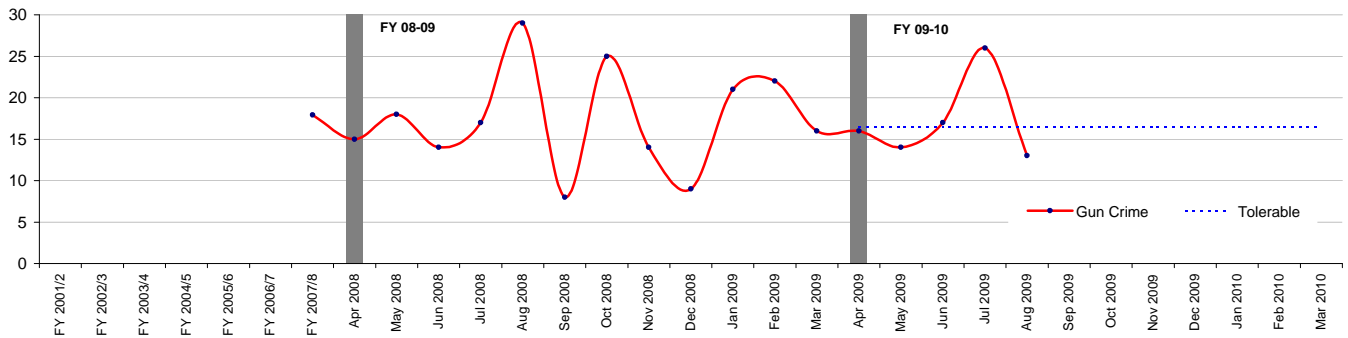
## Community Police Consultative Group for Lambeth-Monthly Report

### Criminal Damage Offences



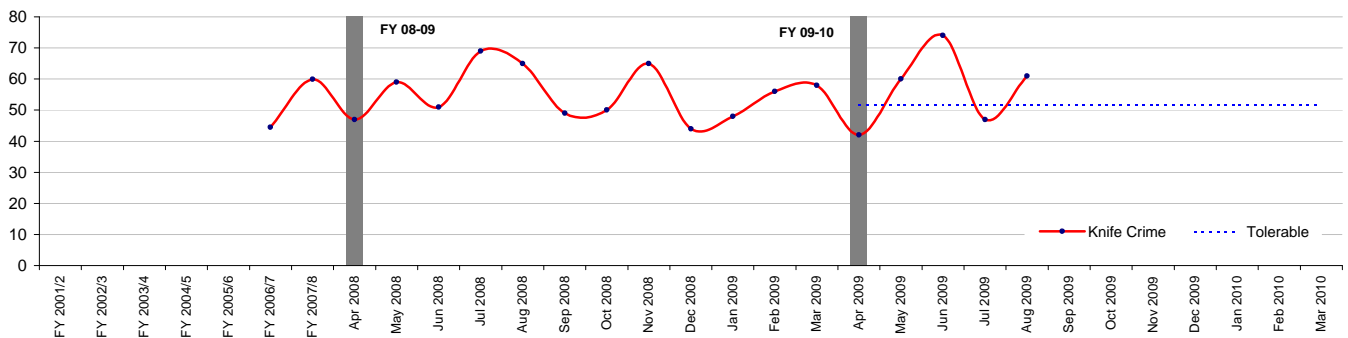
Criminal Damage Offences	
<i>Financial Year to Date Compared to Same Period in last Financial Year</i>	
<b>Current Offences FYTD:</b>	6% Up
<b>Current SD Rate FYTD:</b>	11% (Down from 13%)
<b>Monthly Average:</b>	336.6
<b>Target Offences (Monthly):</b>	302.8
<b>SD Target</b>	0%

### Gun Crime



Gun Crime	
<i>Financial Year to Date Compared to Same Period in last Financial Year</i>	
<b>Current Offences FYTD:</b>	-8% Down
<b>Current SD Rate FYTD:</b>	17% (Down from 23%)
<b>Monthly Average:</b>	17.2
<b>Target Offences (Monthly):</b>	16.5
<b>SD Target</b>	0%

### Knife Crime

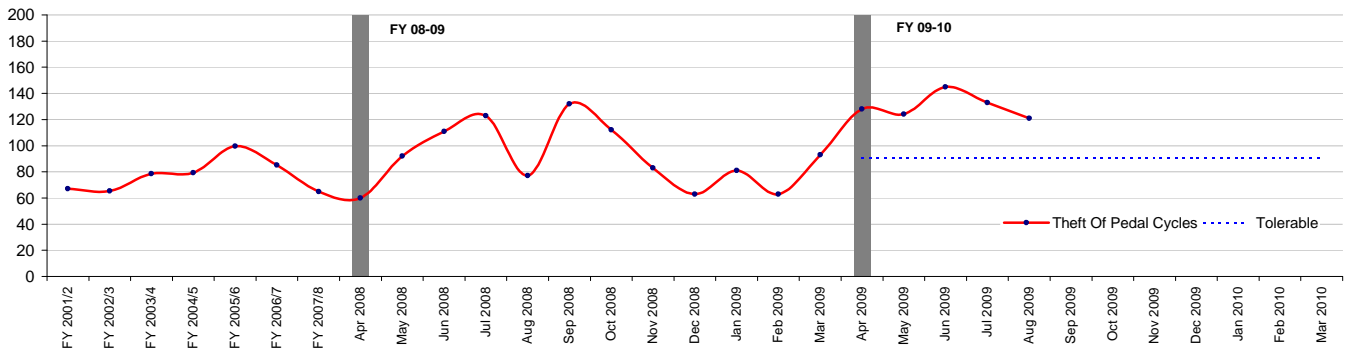


Knife Crime	
<i>Financial Year to Date Compared to Same Period in last Financial Year</i>	
<b>Current Offences FYTD:</b>	-2% Down
<b>Current SD Rate FYTD:</b>	18% (Down from 23%)
<b>Monthly Average:</b>	56.8
<b>Target Offences (Monthly):</b>	51.8
<b>SD Target</b>	0%



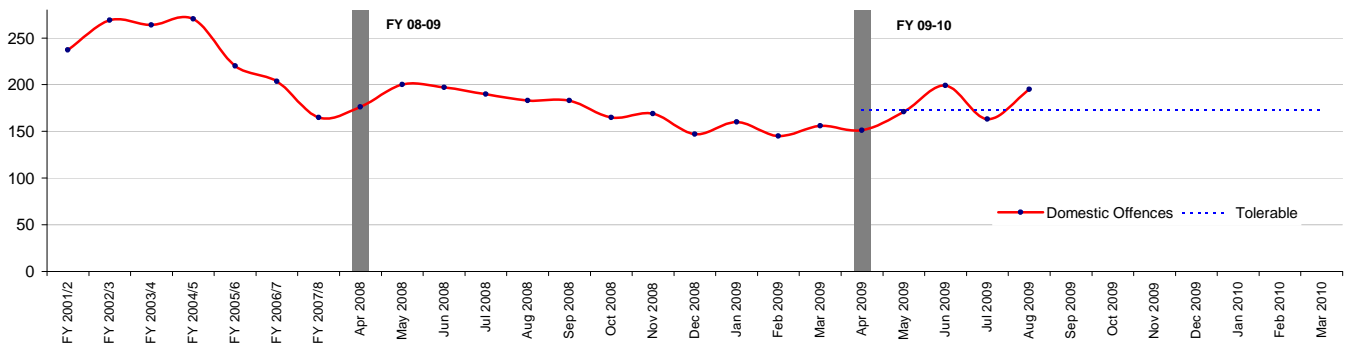
## Community Police Consultative Group for Lambeth-Monthly Report

### Theft Of Pedal Cycles



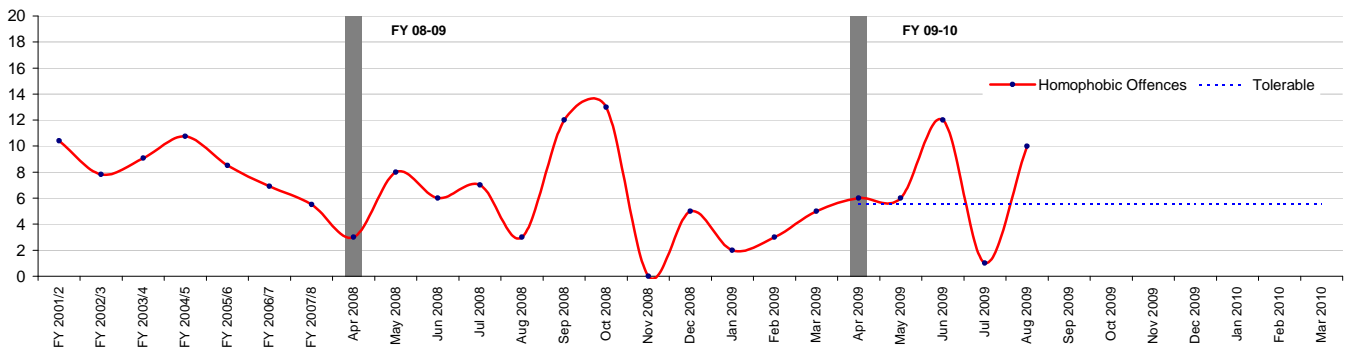
Theft Of Pedal Cycles	
<i>Financial Year to Date Compared to Same Period in last Financial Year</i>	
<b>Current Offences FYTD:</b>	41% Up
<b>Current SD Rate FYTD:</b>	2% (Up from 2%)
<b>Monthly Average:</b>	130.2
<b>Target Offences (Monthly):</b>	90.8
<b>SD Target</b>	0%

### Domestic Offences



Domestic Offences	
<i>Financial Year to Date Compared to Same Period in last Financial Year</i>	
<b>Current Offences FYTD:</b>	-7% Down
<b>Current SD Rate FYTD:</b>	42% (Down from 49%)
<b>Monthly Average:</b>	175.8
<b>Target Offences (Monthly):</b>	172.6
<b>SD Target</b>	45%

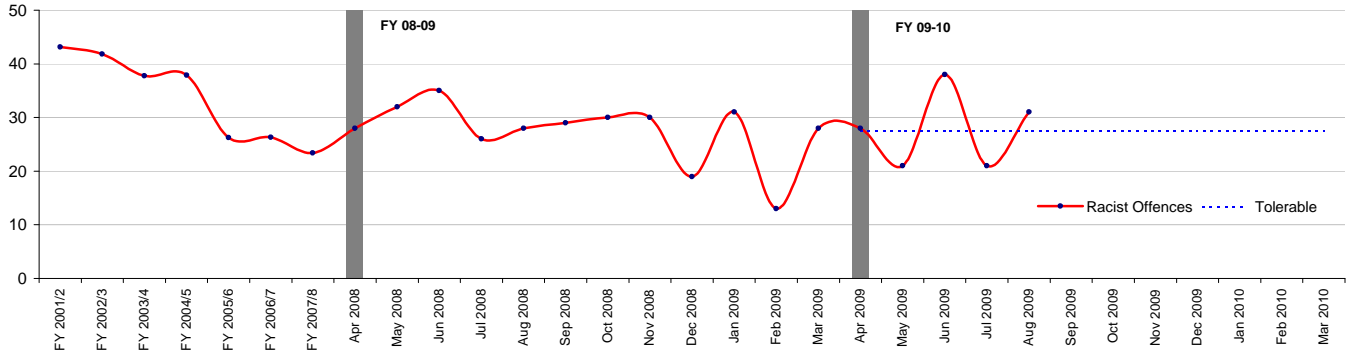
### Homophobic Offences



Homophobic Offences	
<i>Financial Year to Date Compared to Same Period in last Financial Year</i>	
<b>Current Offences FYTD:</b>	30% Up
<b>Current SD Rate FYTD:</b>	37% (Down from 44%)
<b>Monthly Average:</b>	7
<b>Target Offences (Monthly):</b>	5.6
<b>SD Target</b>	44%

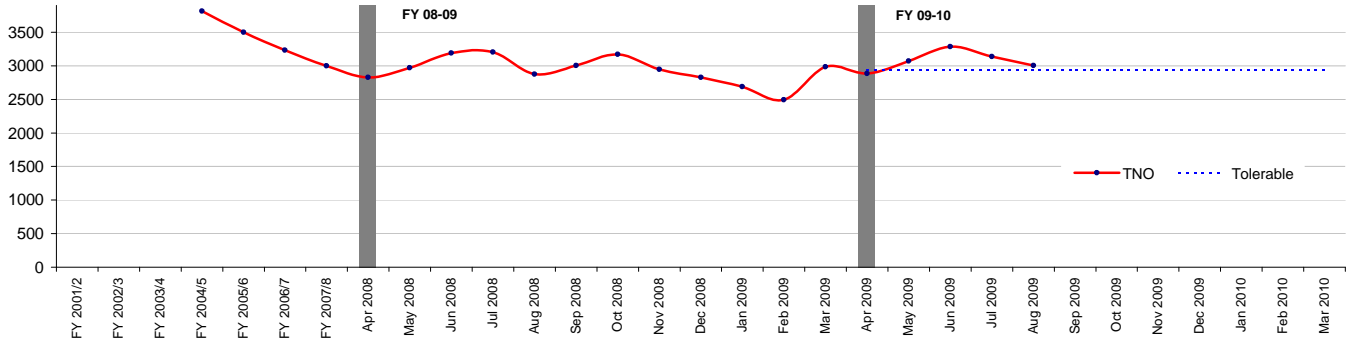
## Community Police Consultative Group for Lambeth-Monthly Report

### Racist Offences



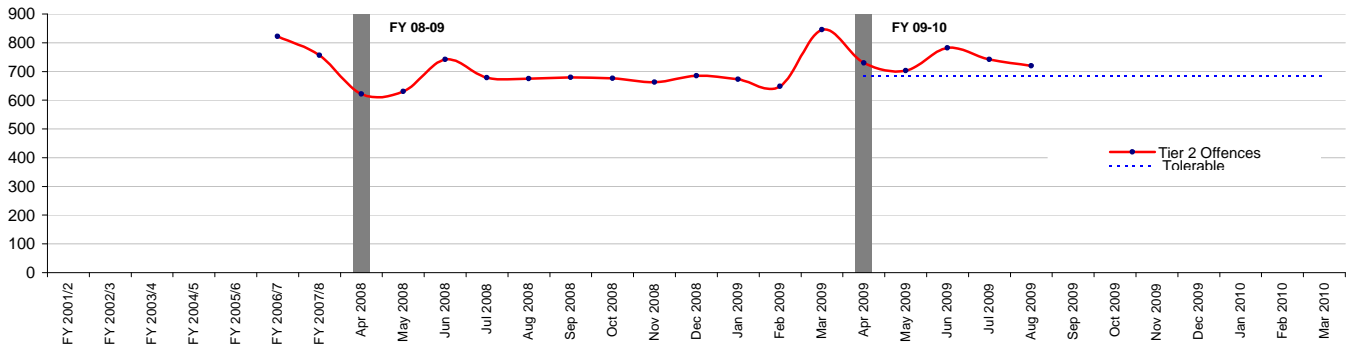
Racist Offences	
<i>Financial Year to Date Compared to Same Period in last Financial Year</i>	
<b>Current Offences FYTD:</b>	-7% Down
<b>Current SD Rate FYTD:</b>	46% (Down from 47%)
<b>Monthly Average:</b>	27.8
<b>Target Offences (Monthly):</b>	27.4
<b>SD Target</b>	50%

### TNO



TNO	
<i>Financial Year to Date Compared to Same Period in last Financial Year</i>	
<b>Current Offences FYTD:</b>	2% Up
<b>Current SD Rate FYTD:</b>	23% (Down from 27%)
<b>Monthly Average:</b>	3076.2
<b>Target Offences (Monthly):</b>	2932.2
<b>SD Target</b>	0%

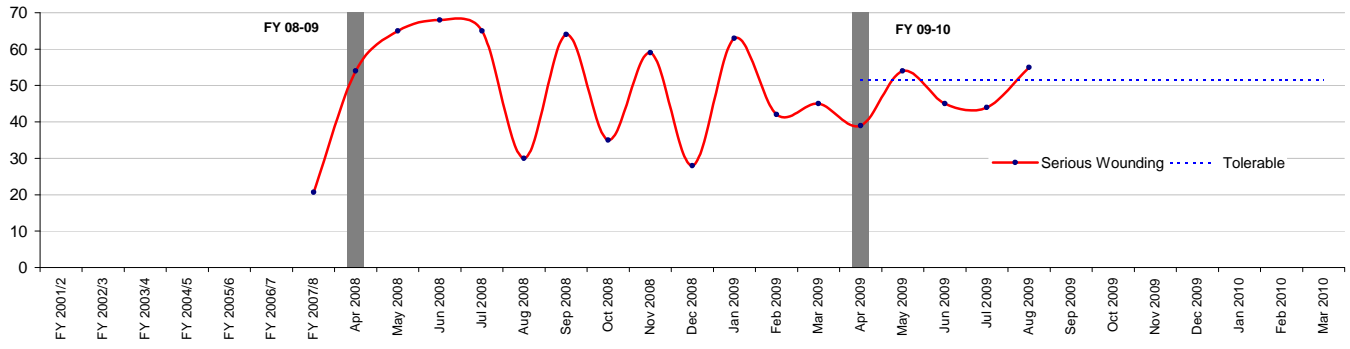
### Tier 2 Offences



Tier 2 Offences	
<i>Financial Year to Date Compared to Same Period in last Financial Year</i>	
<b>Current Offences FYTD:</b>	10% Up
<b>Current SD Rate FYTD:</b>	10% (Up from 7%)
<b>Monthly Average:</b>	735.4
<b>Target Offences (Monthly):</b>	684.7
<b>SD Target</b>	13%

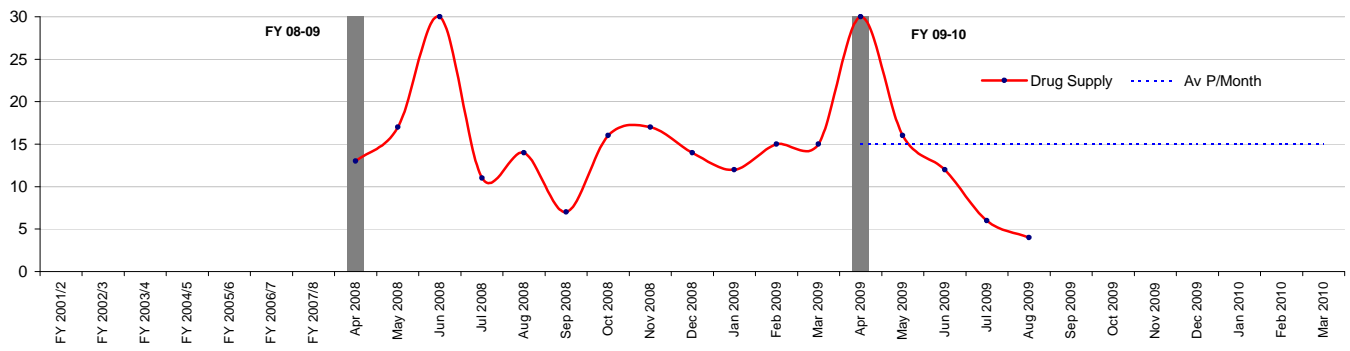
## Community Police Consultative Group for Lambeth-Monthly Report

### Serious Wounding



Serious Wounding	
Financial Year to Date Compared to Same Period in last Financial Year	
<b>Current Offences FYTD:</b>	-16% Down
<b>Current SD Rate FYTD:</b>	28% (Up from 23%)
<b>Monthly Average:</b>	47.4
<b>Target Offences (Monthly):</b>	51.5
<b>SD Target</b>	0%

### Drug Supply



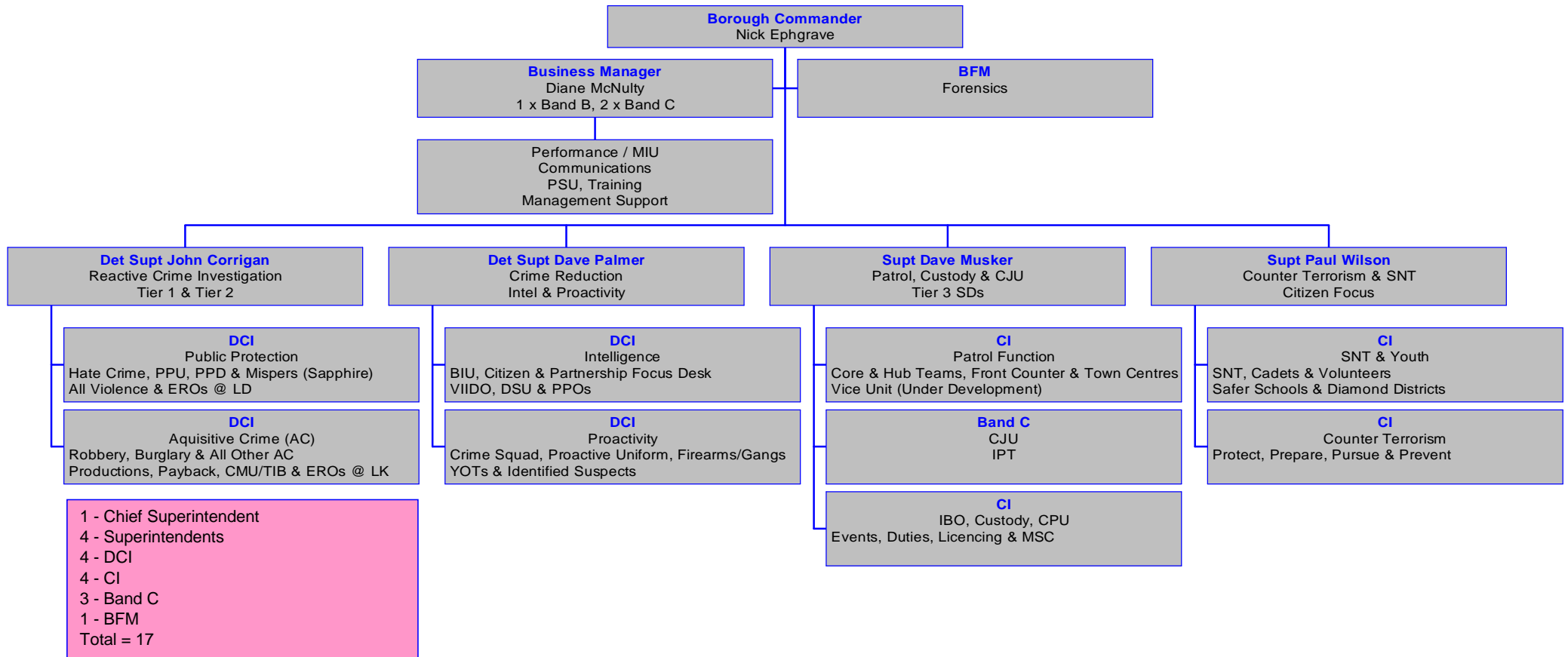
Serious Wounding	
Financial Year to Date Compared to Same Period in last Financial Year	
<b>Current Offences FYTD:</b>	-20% Down
<b>Current SD Rate FYTD:</b>	0% ( from 0%)
<b>Monthly Average:</b>	13.6
<b>Target Offences (Monthly):</b>	15.1
<b>SD Target</b>	0%

Abstractions per Month 2009-2010									
	SOUTH			NORTH			Totals		
Date	Insp	PS	PC	Insp	PS	PC	Insp	PS	PC
April	20	82	541	16	59	449	36	141	990
May	17	66	430	11	50	400	28	116	830
June	7	17	113	1	8	58	8	25	171
July	1	9	62	2	7	46	3	16	108
Aug	8	32	227	8	33	229	16	65	456

Staff day abstractions across the Borough

Financial Year To Date Crime Performance				
	FY 2009 to July (ytd)	FY 2008 to July (ytd)	Difference	% Change
Total Crimes	15,381	15,066	315	2.1%
Homicide	3	5	-2	-40.0%
Violence Against the Person (Total)	3,471	3,503	-32	-0.9%
Rape	76	71	5	7.0%
Other Sexual	130	157	-27	-17.2%
Robbery (Total)	988	881	107	12.1%
Robbery (Person)	911	820	91	11.1%
Robbery (Business)	77	61	16	26.2%
Burglary (Total)	1,677	1,379	298	21.6%
Burglary Residential	1,290	1001	289	28.9%
Burglary Non- Residential	387	378	9	2.4%
Gun Enabled Crime	86	93	-7	-7.5%
Motor Vehicle Crime	1,399	1,465	-66	-4.5%
Domestic Crime	879	946	-67	-7.1%
Racist Crime	139	149	-10	-6.7%
Homophobic Crime	35	27	8	29.6%

### Lambeth SMT Structure - Walrus 3



## **Glossary**

### **'Sanctioned' Detection Definition**

A 'Sanctioned' Detection is where an allegation has resulted in either a charge, a summons, a caution, a formal warning, a youth reprimand or an offence being taken into consideration i.e. in addition to the charge for which the person is before a court, other offences can be admitted by the defendant and the court asked to take these offences into consideration in passing sentence.

### **Total Robbery**

Combination of Robbery and Commercial Robbery

### **Robbery**

Theft where force or threat of force is made to a person at the time or immediately before in order to steal

### **TNO Total Notifiable Offences**

All notifiable offences which are recorded by police and a crime report is generated

### **I-Call**

Police graded response to answer a 999 call received in the Police Control Room with 10 seconds. Response Time as per Policing Pledge for urban areas is 12 minutes (within 20 mins for rural areas). Giving an estimated time of arrival (TOA) and getting there safely and quickly as possible.

### **CAD**

Computer aided dispatch which is the computer system used within Metropolitan Police Control rooms to record incidents