

Community Police Consultative Group for Lambeth



Monthly Police Report

CPCGLambeth

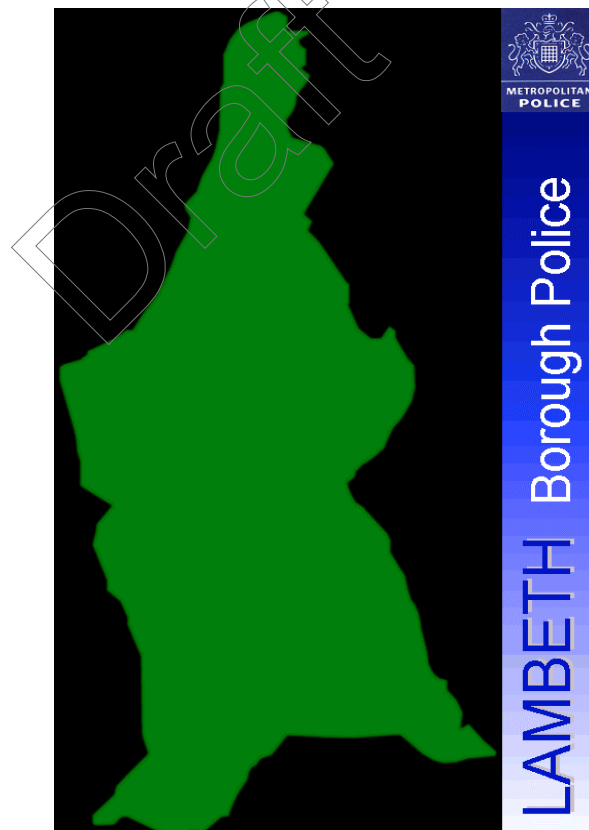
Data Set: July 2010

(Starting from April Data)

Financial Year 2010-2011

The CPCG report will be produced on a Monthly basis by the Lambeth Police
Inspection & Review Unit

Not Protectively Marked



INDEX

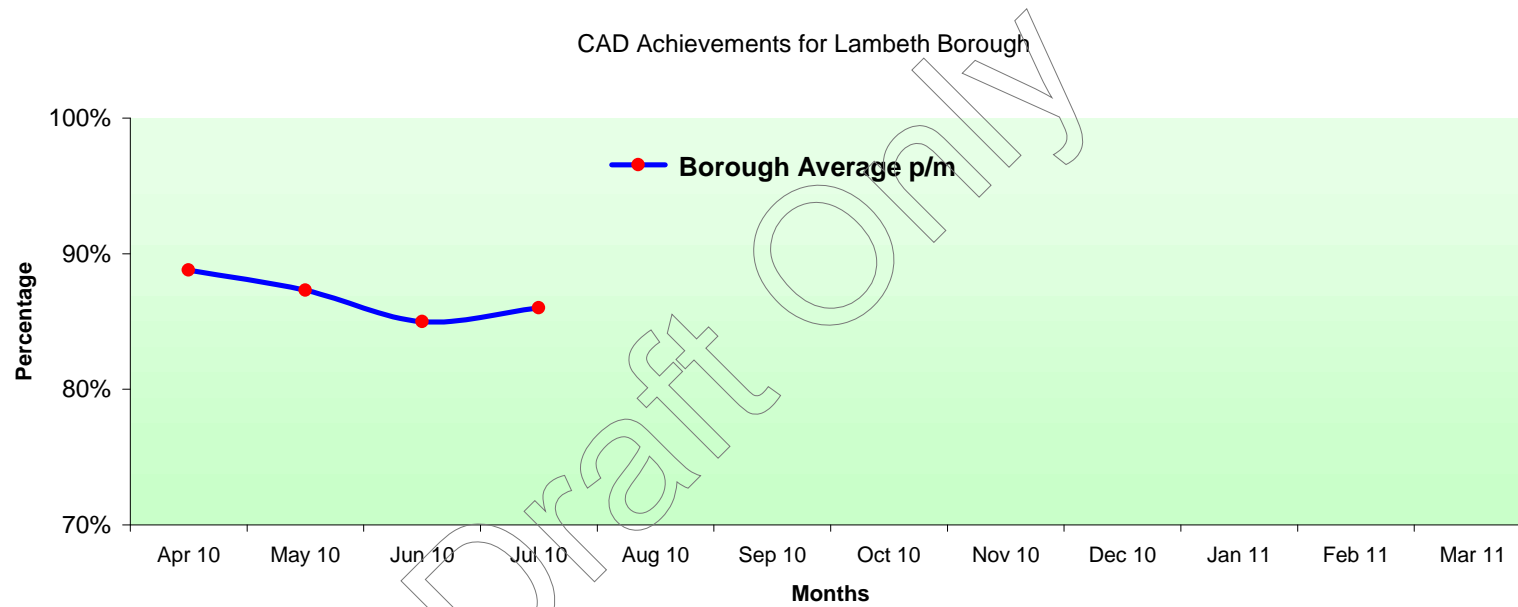
LAMBETH BOROUGH

Page 1	CAD Achievements
Pages 2-25	Classified & Confirmed Offences: Robbery Offences Serious Youth Violence Theft Person Theft of MV Theft From MV Other Serious Sexual Rape Offences Possession Of Drugs Murder Most Serious Violence Assault with Injury Burglary Res Criminal Damage Offences Gun Crime Knife Crime Theft Of Pedal Cycles Domestic Offences Homophobic Offences Racist Offences TNO Tier 2 Offences Serious Wounding Drug Supply Violence with Injury
Pages 26-33	Charts of Above Offences
Page 34	MPS Performance FYTD
Page 35	Organogram
Page 36	Glossary

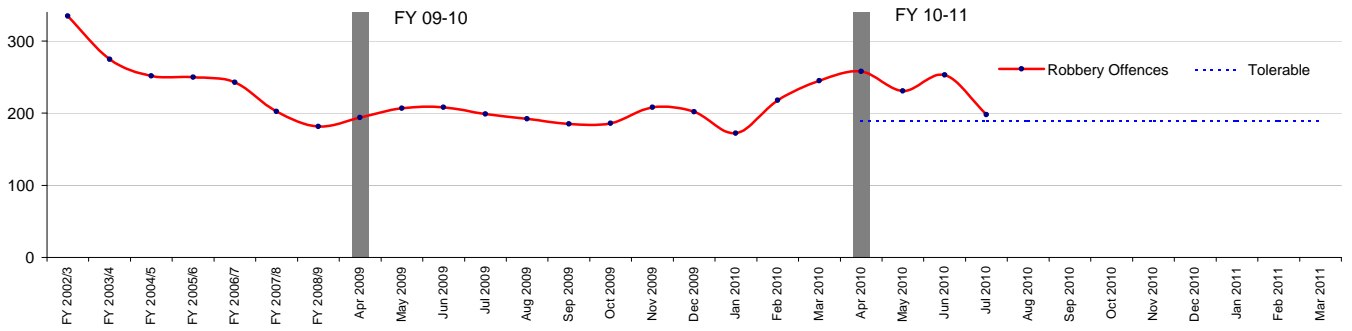
Protective Marking	Not Protectively Marked
FOIA Exemption	None
Publication Scheme	No
Title and Version	Lambeth Community and Police Consultative Group Monthly Report
Purpose	To Inform Relevant Staff and Community of Performance
Relevant To	All Staff on Lambeth BOCU and community members
Author and warrant / pay number	Trevor Peplow PC 394 LX
OCU / Branch / Unit	Lambeth Police Performance and Review Unit @ Frank O'Neill House
Summary	Report is produced on a monthly basis
Date Created	July 2010
Review Date	Monthly as Required

Call Type	Sector / Month	Apr 2010	May 2010	Jun 2010	Jul 2010	Aug 2010	Sep 2010	Oct 2010	Nov 2010	Dec 2010	Jan 2011	Feb 2011	Mar 2011
		Borough Average p/m	89%	87%	85%	86%							
	Borough Average YTD	89%	88%	87%	87%								

Average Response Time for Immediate Calls: 12 mins

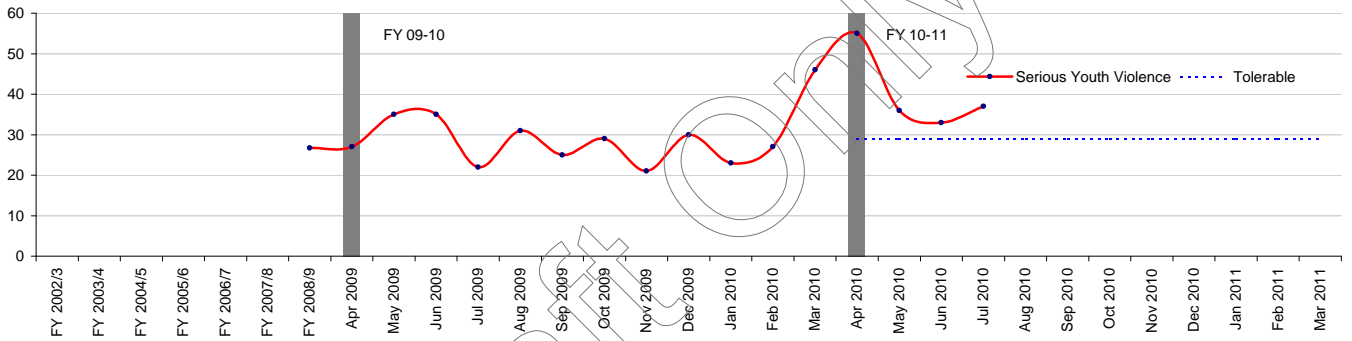


Robbery Offences



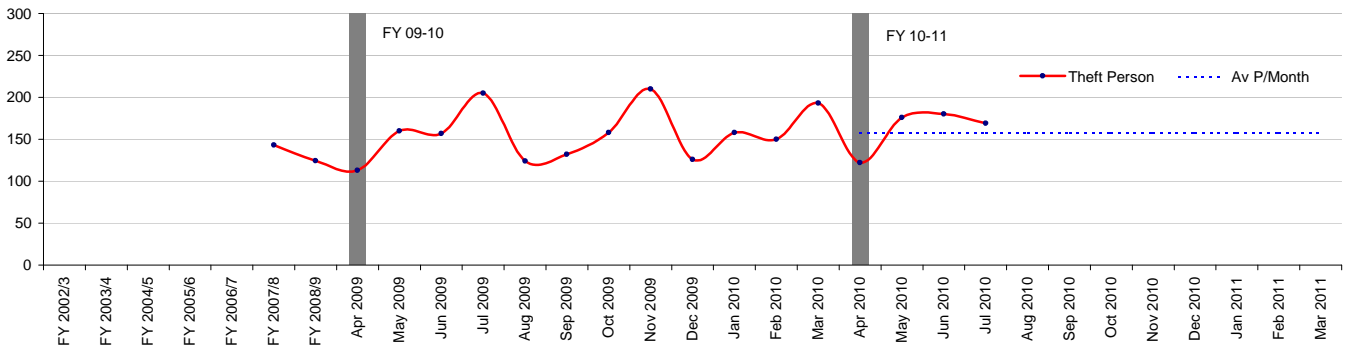
Robbery Offences	
Financial Year to Date Compared to Same Period in last Financial Year	
Current Offences FYTD:	16% Up
Current SD Rate FYTD:	12% (Up from 8%)
Monthly Average:	235
Target Offences (Monthly):	189.3
SD Target	19%

Serious Youth Violence



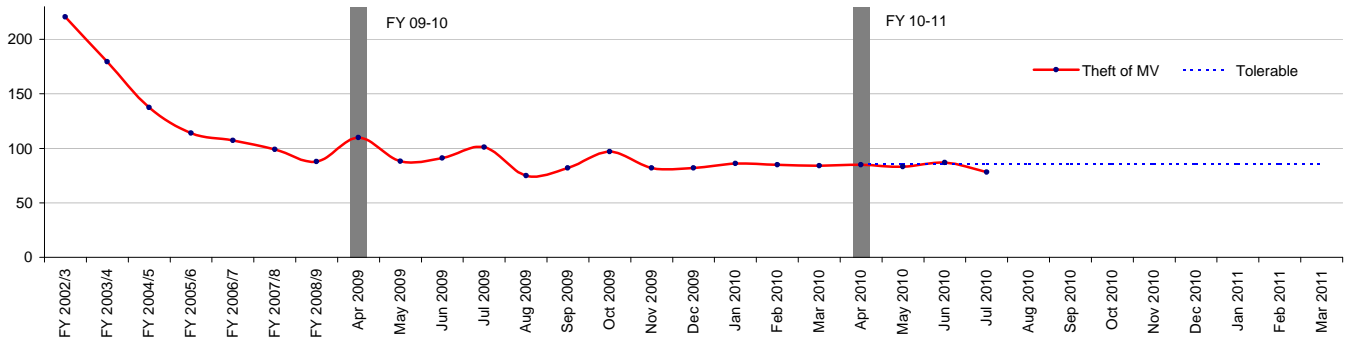
Serious Youth Violence	
Financial Year to Date Compared to Same Period in last Financial Year	
Current Offences FYTD:	35% Up
Current SD Rate FYTD:	0% (Down from 0%)
Monthly Average:	40.25
Target Offences (Monthly):	29.0
SD Target	0%

Theft Person



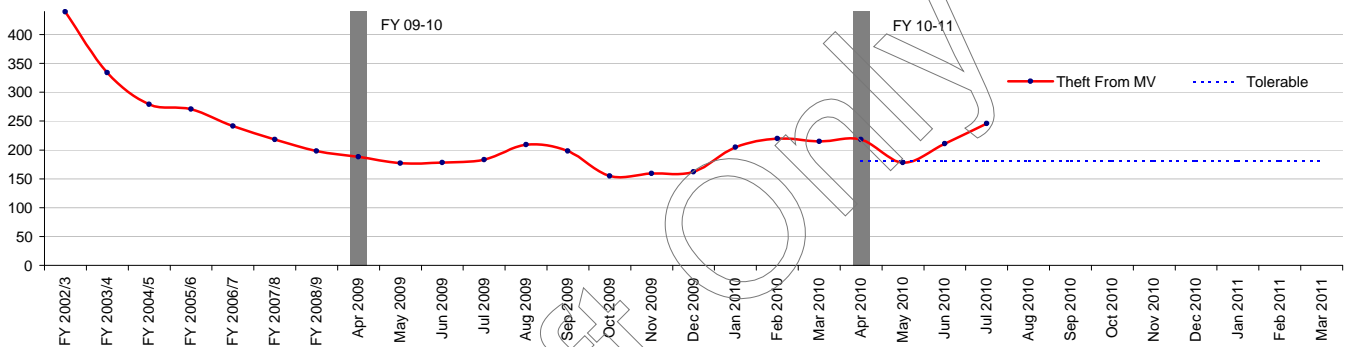
Theft Person	
Financial Year to Date Compared to Same Period in last Financial Year	
Current Offences FYTD:	2% Up
Current SD Rate FYTD:	1% (Down from 2%)
Monthly Average:	161.75
Target Offences (Monthly):	157.2
SD Target	0%

Theft of MV



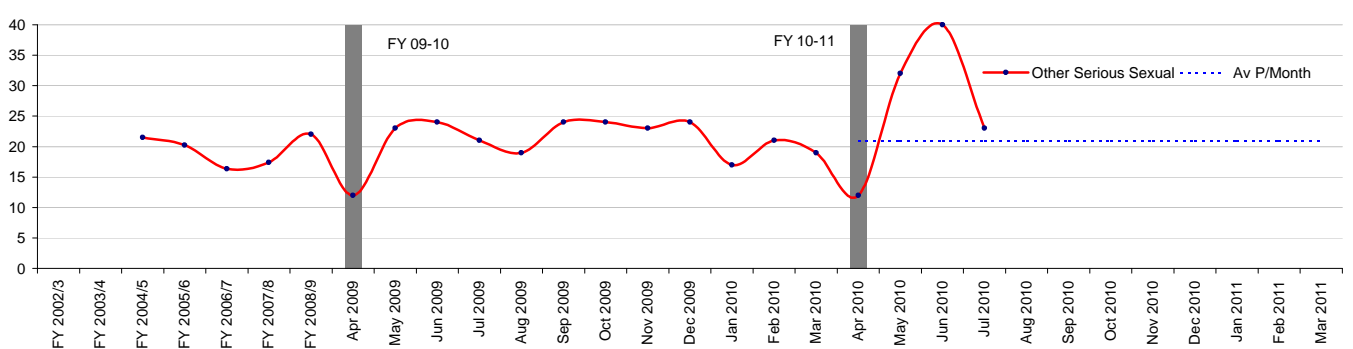
Theft of MV	
Financial Year to Date Compared to Same Period in last Financial Year	
Current Offences FYTD:	-15% Down
Current SD Rate FYTD:	5% (Down from 7%)
Monthly Average:	83.25
Target Offences (Monthly):	85.0
SD Target	8%

Theft From MV



Theft From MV	
Financial Year to Date Compared to Same Period in last Financial Year	
Current Offences FYTD:	17% Up
Current SD Rate FYTD:	2% (Down from 5%)
Monthly Average:	213.25
Target Offences (Monthly):	180.7
SD Target	8%

Other Serious Sexual

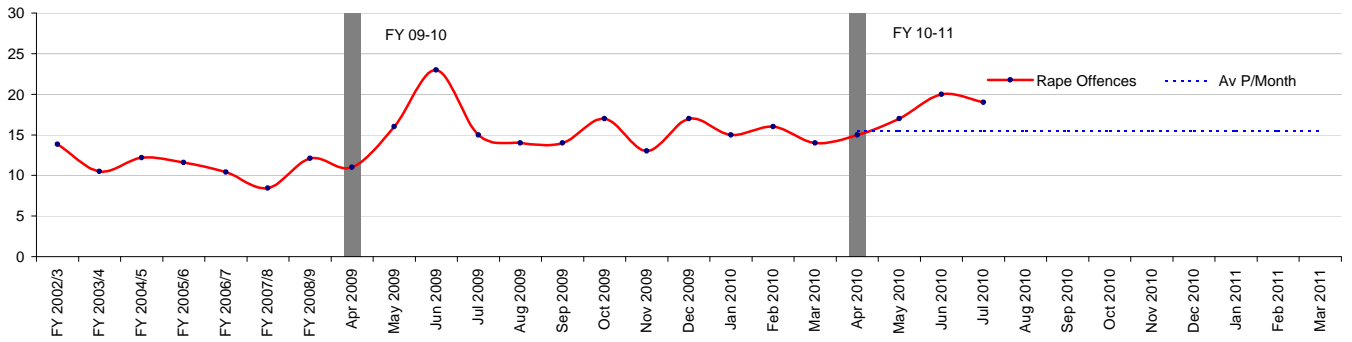


Other Serious Sexual	
Financial Year to Date Compared to Same Period in last Financial Year	
Current Offences FYTD:	34% Up
Current SD Rate FYTD:	26% (Up from 10%)
Monthly Average:	26.75
Target Offences (Monthly):	20.9
SD Target	0%

Rape Offences

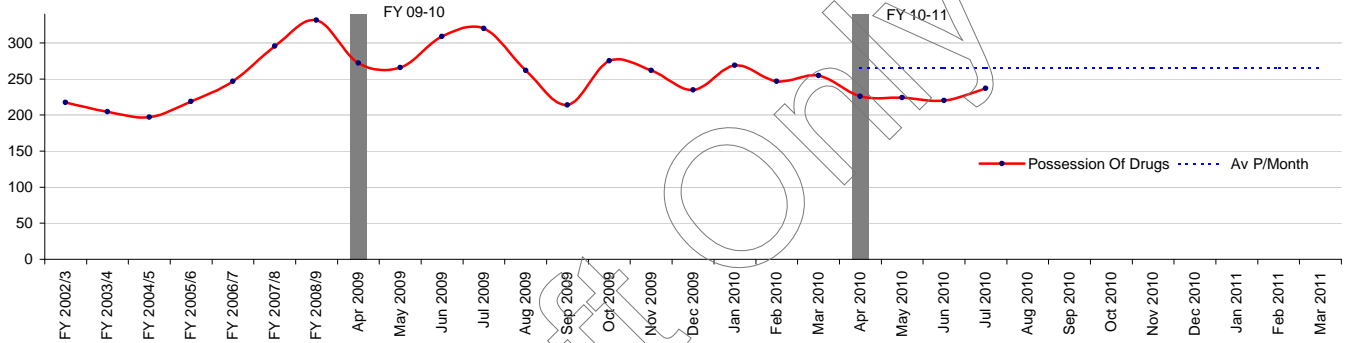


Rape Offences



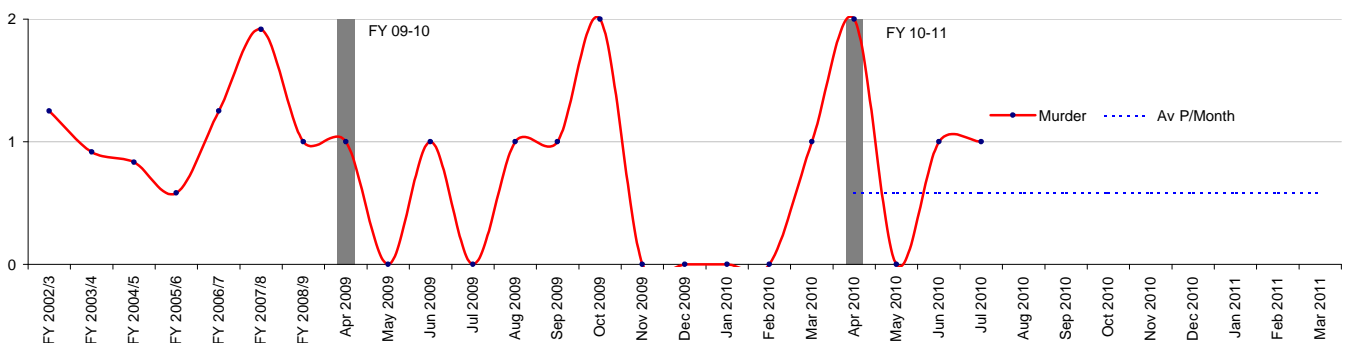
Rape Offences	
Financial Year to Date Compared to Same Period in last Financial Year	
Current Offences FYTD:	9% Up
Current SD Rate FYTD:	14% (Down from 28%)
Monthly Average:	17.75
Target Offences (Monthly):	15.4
SD Target	35%

Possession Of Drugs



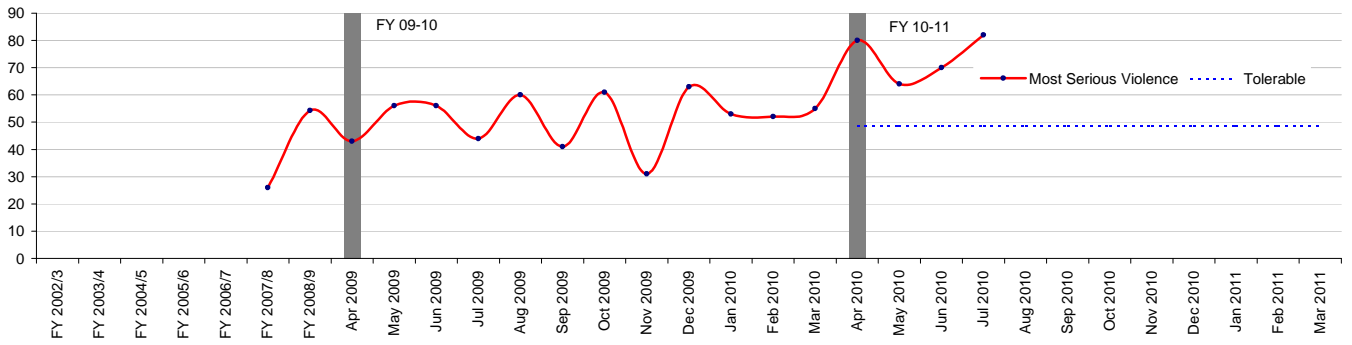
Possession Of Drugs	
Financial Year to Date Compared to Same Period in last Financial Year	
Current Offences FYTD:	-22% Down
Current SD Rate FYTD:	73% (Down from 74%)
Monthly Average:	226.75
Target Offences (Monthly):	265.5
SD Target	0%

Murder



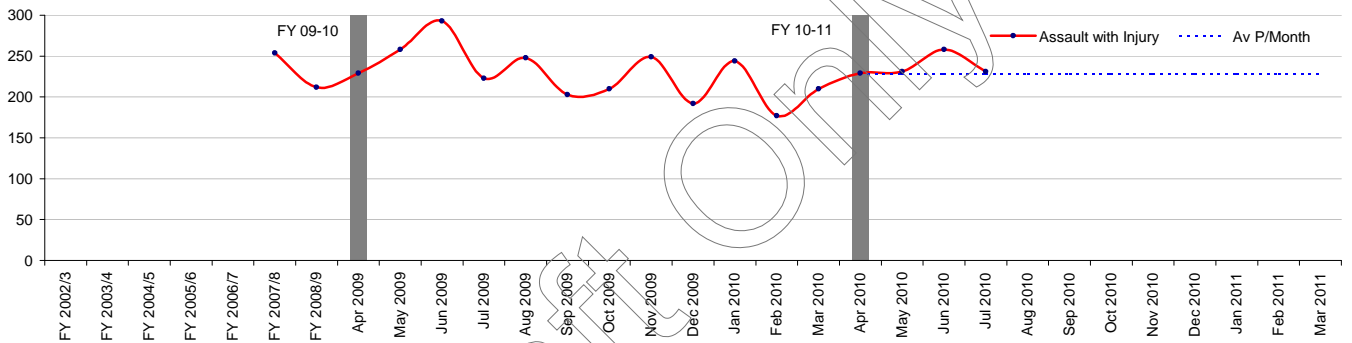
Murder	
Financial Year to Date Compared to Same Period in last Financial Year	
Current Offences FYTD:	100% Up
Current SD Rate FYTD:	150% (Down from 150%)
Monthly Average:	1
Target Offences (Monthly):	0.6
SD Target	0%

Most Serious Violence



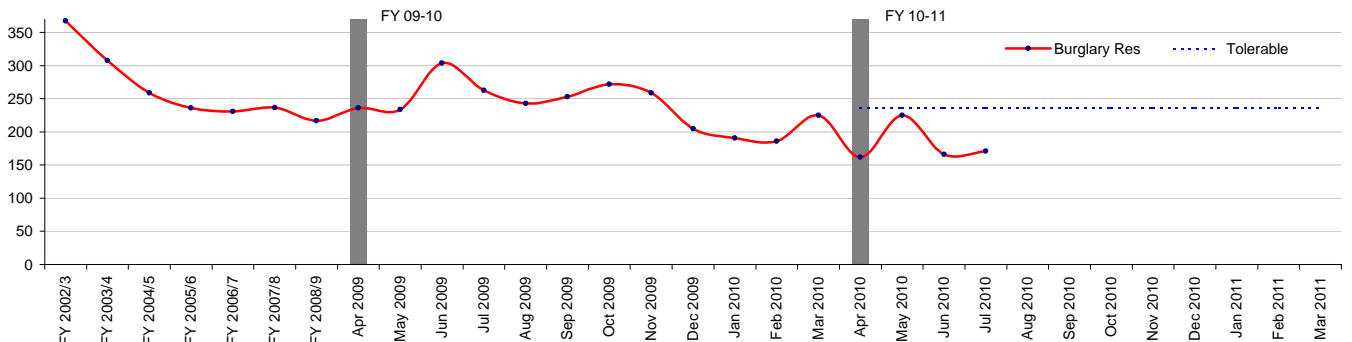
Most Serious Violence	
Financial Year to Date Compared to Same Period in last Financial Year	
Current Offences FYTD:	49% Up
Current SD Rate FYTD:	34% (Down from 34%)
Monthly Average:	74
Target Offences (Monthly):	48.7
SD Target	32%

Assault with Injury



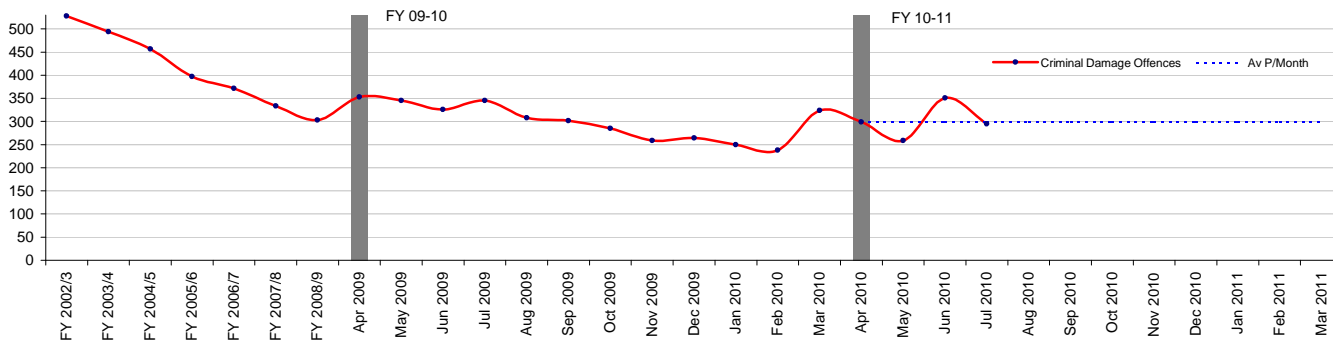
Assault with Injury	
Financial Year to Date Compared to Same Period in last Financial Year	
Current Offences FYTD:	-5% Down
Current SD Rate FYTD:	27% (Up from 26%)
Monthly Average:	237.25
Target Offences (Monthly):	228.0
SD Target	0%

Burglary Res



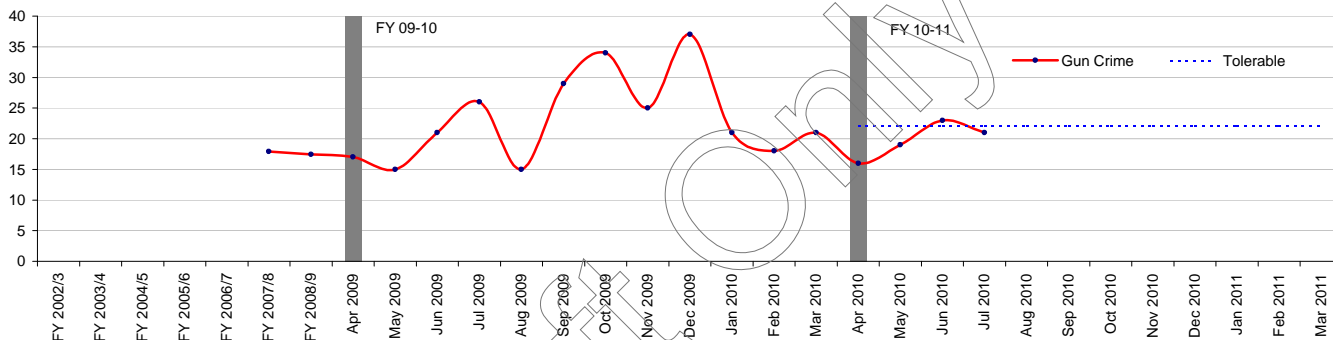
Burglary Res	
Financial Year to Date Compared to Same Period in last Financial Year	
Current Offences FYTD:	-30% Down
Current SD Rate FYTD:	12% (Down from 12%)
Monthly Average:	181
Target Offences (Monthly):	236.9
SD Target	16%

Criminal Damage Offences



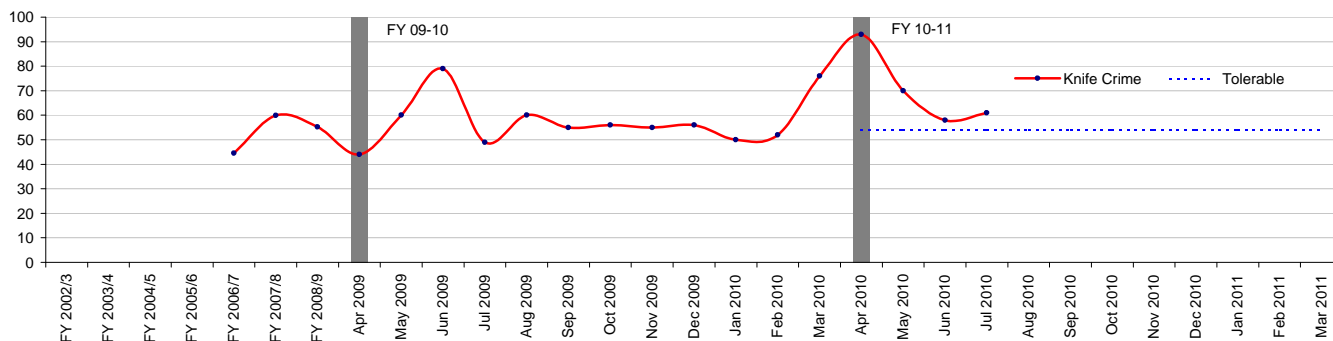
Criminal Damage Offences	
Financial Year to Date Compared to Same Period in last Financial Year	
Current Offences FYTD:	-12% Down
Current SD Rate FYTD:	11% (Up from 11%)
Monthly Average:	301
Target Offences (Monthly):	299.9
SD Target	0%

Gun Crime



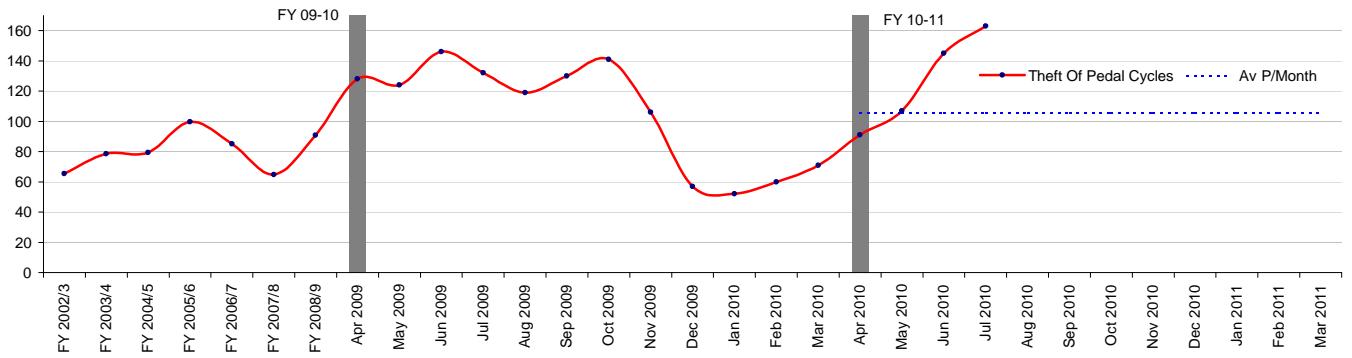
Gun Crime	
Financial Year to Date Compared to Same Period in last Financial Year	
Current Offences FYTD:	0% Down
Current SD Rate FYTD:	25% (Up from 20%)
Monthly Average:	19.75
Target Offences (Monthly):	22.1
SD Target	0%

Knife Crime



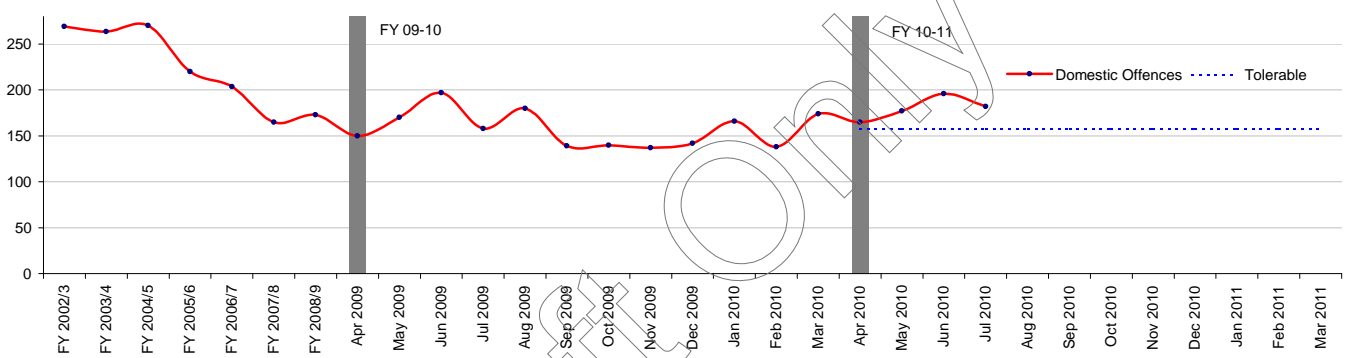
Knife Crime	
Financial Year to Date Compared to Same Period in last Financial Year	
Current Offences FYTD:	22% Up
Current SD Rate FYTD:	20% (Down from 20%)
Monthly Average:	70.5
Target Offences (Monthly):	54.2
SD Target	0%

Theft Of Pedal Cycles



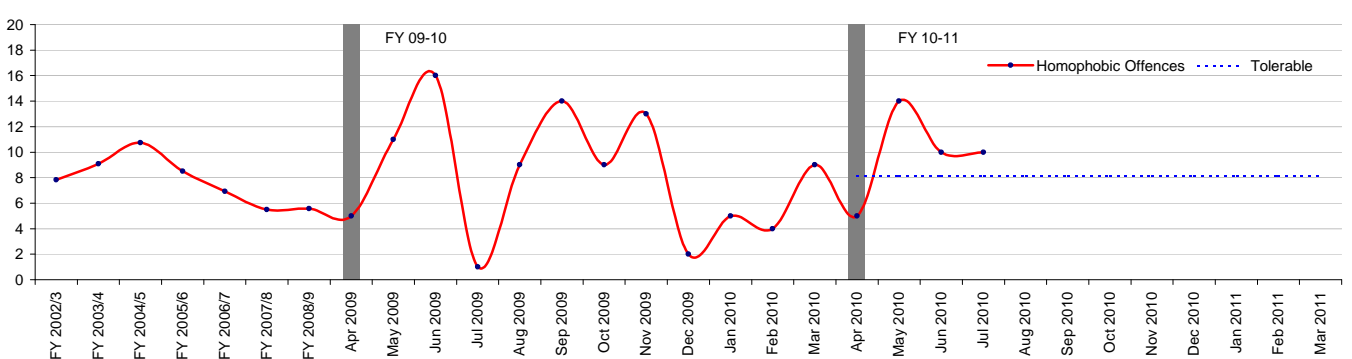
Theft Of Pedal Cycles	
Financial Year to Date Compared to Same Period in last Financial Year	
Current Offences FYTD:	-5% Down
Current SD Rate FYTD:	1% (Down from 2%)
Monthly Average:	126.5
Target Offences (Monthly):	105.5
SD Target	0%

Domestic Offences



Domestic Offences	
Financial Year to Date Compared to Same Period in last Financial Year	
Current Offences FYTD:	7% Up
Current SD Rate FYTD:	42% (Down from 46%)
Monthly Average:	180
Target Offences (Monthly):	157.6
SD Target	45%

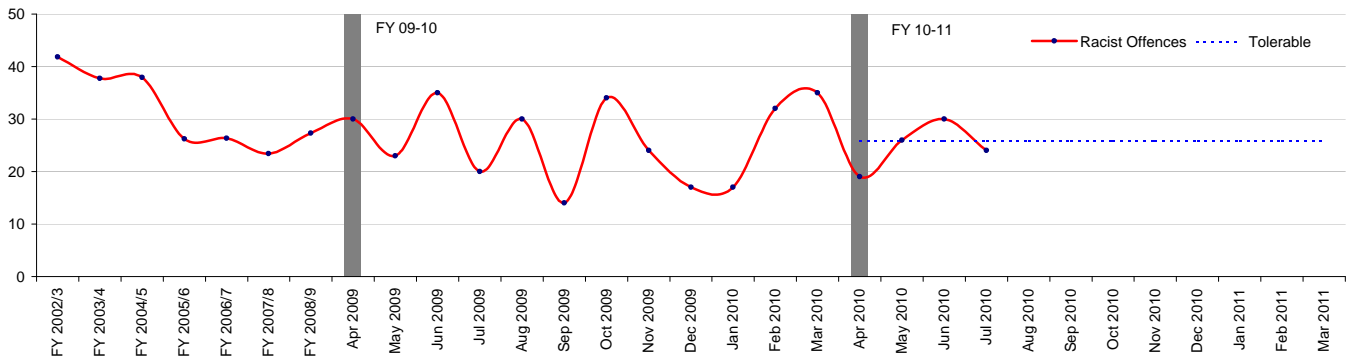
Homophobic Offences



Homophobic Offences	
Financial Year to Date Compared to Same Period in last Financial Year	
Current Offences FYTD:	18% Up
Current SD Rate FYTD:	26% (Down from 48%)
Monthly Average:	9.75
Target Offences (Monthly):	8.2
SD Target	44%

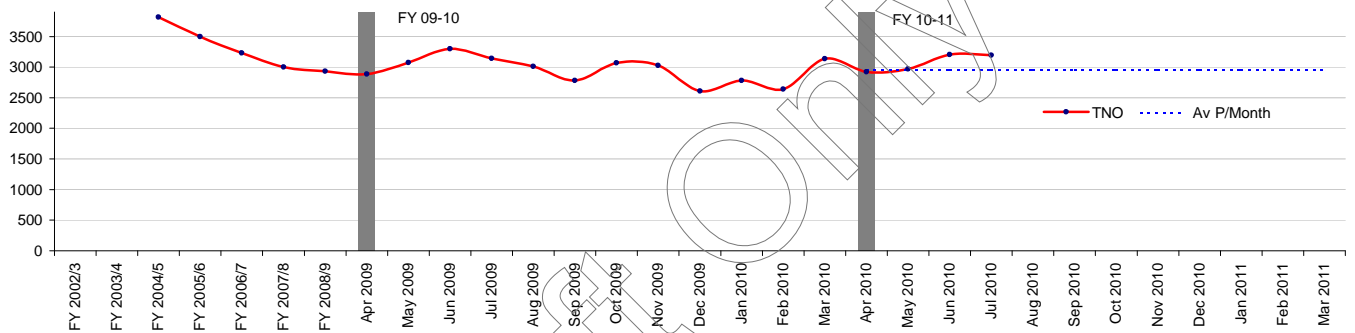
Racist Offences

Racist Offences



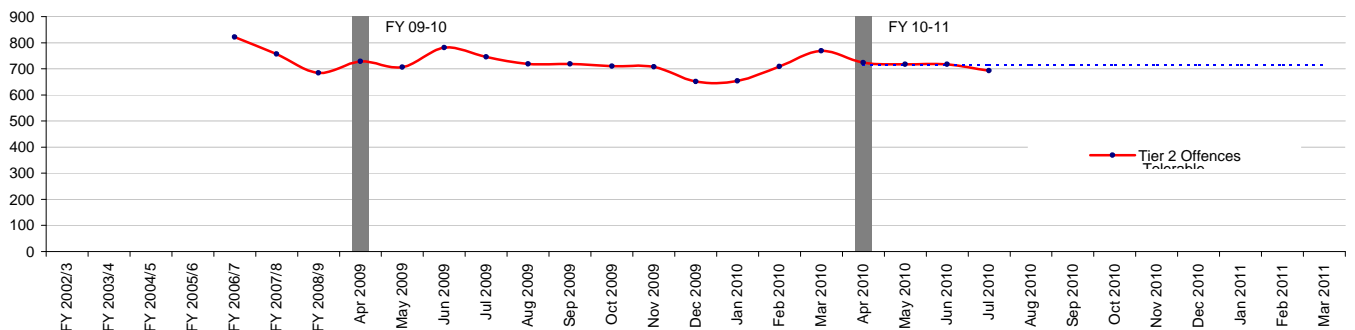
Racist Offences	
Financial Year to Date Compared to Same Period in last Financial Year	
Current Offences FYTD:	-8% Down
Current SD Rate FYTD:	36% (Down from 55%)
Monthly Average:	24.75
Target Offences (Monthly):	25.9
SD Target	50%

TNO



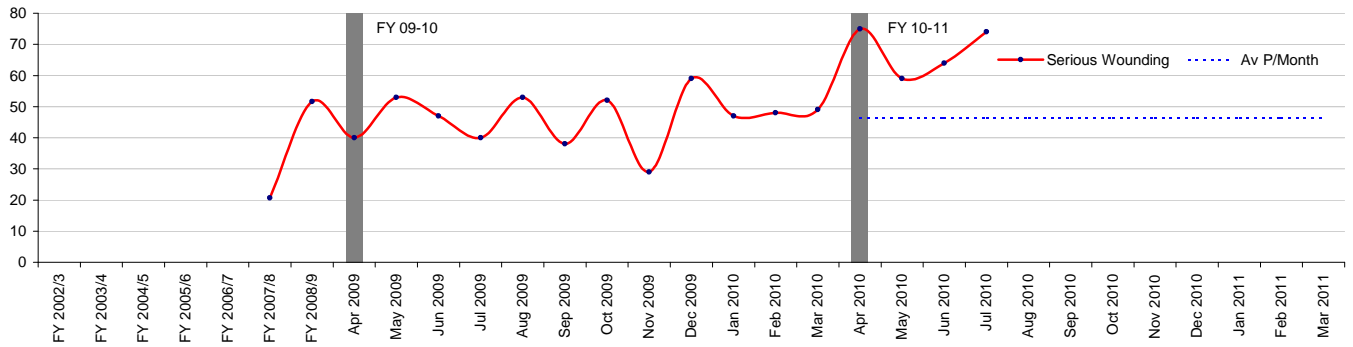
TNO	
Financial Year to Date Compared to Same Period in last Financial Year	
Current Offences FYTD:	-1% Down
Current SD Rate FYTD:	19% (Down from 22%)
Monthly Average:	3072.75
Target Offences (Monthly):	2954.8
SD Target	0%

Tier 2 Offences



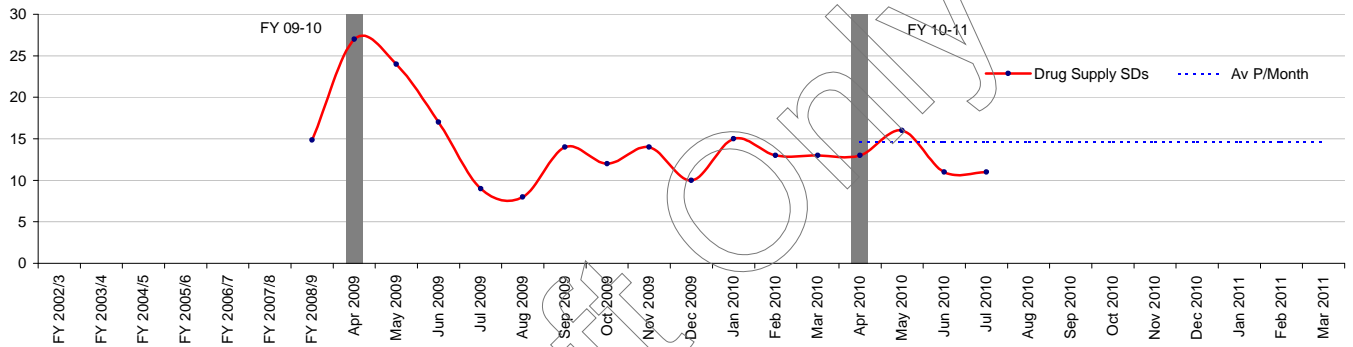
Tier 2 Offences	
Financial Year to Date Compared to Same Period in last Financial Year	
Current Offences FYTD:	-4% Down
Current SD Rate FYTD:	8% (Down from 9%)
Monthly Average:	712.5
Target Offences (Monthly):	716.6
SD Target	13%

Serious Wounding



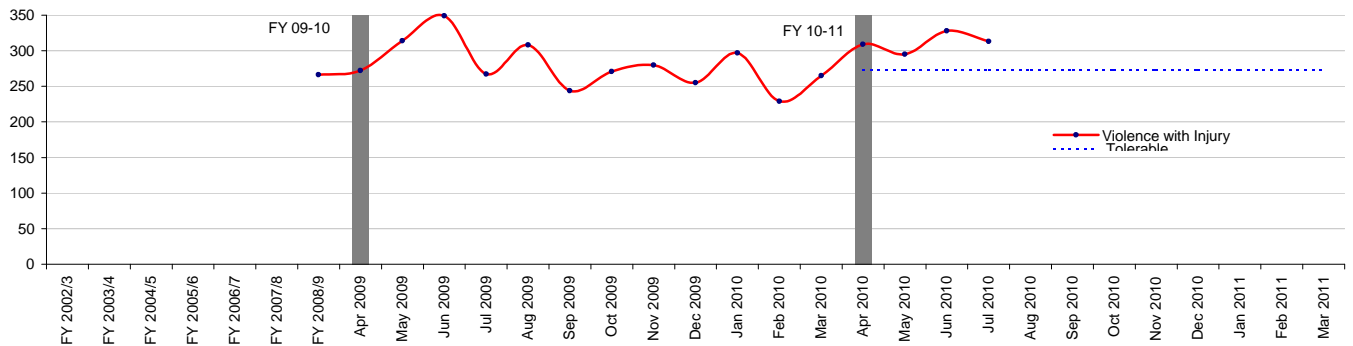
Serious Wounding	
Financial Year to Date Compared to Same Period in last Financial Year	
Current Offences FYTD:	51% Up
Current SD Rate FYTD:	33% (Up from 31%)
Monthly Average:	68
Target Offences (Monthly):	46.3
SD Target	0%

Drug Supply SDs



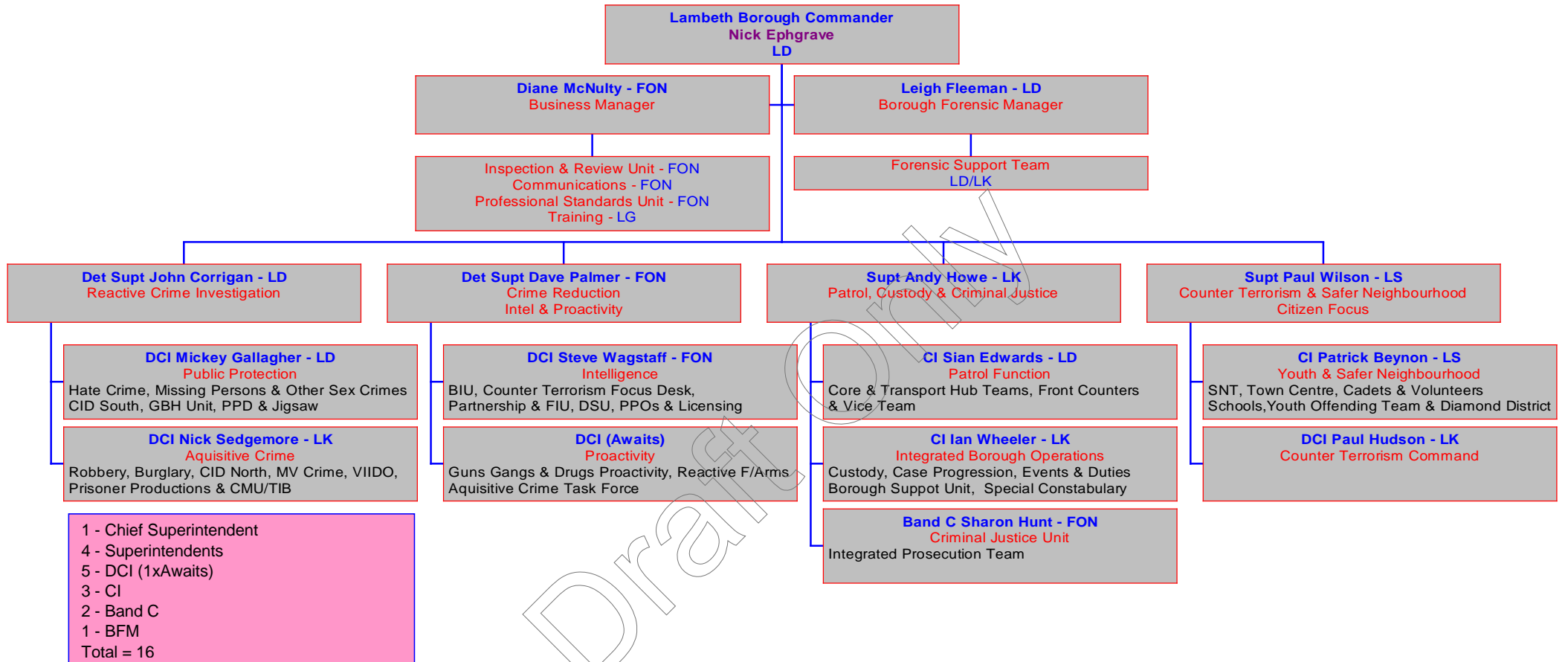
Drug Supply SDs	
Financial Year to Date Compared to Same Period in last Financial Year	
Current Offences FYTD:	-34% Down
Current SD Rate FYTD:	0% (from 0%)
Monthly Average:	12.75
Target Offences (Monthly):	14.7
SD Target	0%

Violence with Injury



Violence with Injury	
Financial Year to Date Compared to Same Period in last Financial Year	
Current Offences FYTD:	4% Up
Current SD Rate FYTD:	28% (Up from 27%)
Monthly Average:	311.25
Target Offences (Monthly):	273.7
SD Target	35%

Lambeth Borough Police Organisational Structure



Glossary

'Sanctioned' Detection Definition

A 'Sanctioned' Detection is where an allegation has resulted in either a charge, a summons, a caution, a formal warning, a youth reprimand or an offence being taken into consideration i.e. in addition to the charge for which the person is before a court, other offences can be admitted by the defendant and the court asked to take these offences into consideration in passing sentence.

Total Robbery

Combination of Robbery and Commercial Robbery

Robbery

Theft where force or threat of force is made to a person at the time or immediately before in order to steal

TNO Total Notifiable Offences

All notifiable offences which are recorded by police and a crime report is generated

I-Call

Police graded response to answer a 999 call received in the Police Control Room with 10 seconds. Response Time as per Policing Pledge for urban areas is 12 minutes (within 20 mins for rural areas). Giving an estimated time of arrival (TOA) and getting there safely and quickly as possible.

CAD

Computer aided dispatch which is the computer system used within Metropolitan Police Control rooms to record incidents