

Community Police Consultative Group for Lambeth



Monthly Police Report

CPCGLambeth

Data Set: August 2010

(Starting from April Data)

Financial Year 2010-2011

The CPCG report will be produced on a Monthly basis by the Lambeth Police
Inspection & Review Unit

Not Protectively Marked



INDEX

LAMBETH BOROUGH

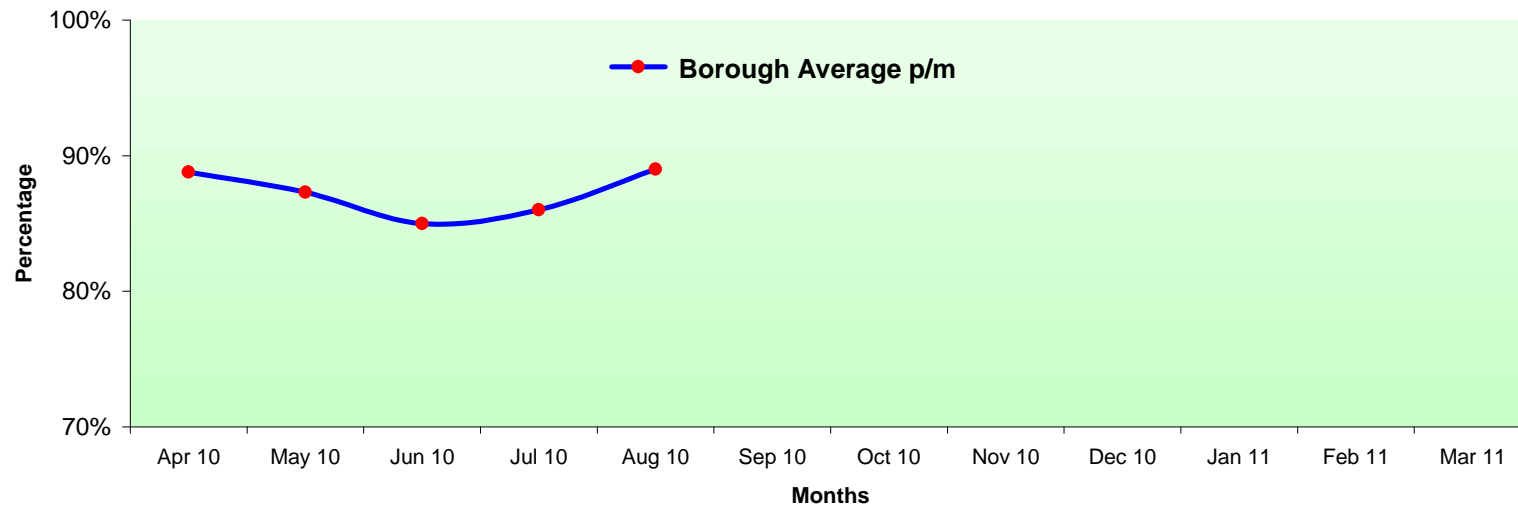
Page 1	CAD Achievements
Pages 2-25	Classified & Confirmed Offences: Robbery Offences Serious Youth Violence Theft Person Theft of MV Theft From MV Other Serious Sexual Rape Offences Possession Of Drugs Murder Most Serious Violence Assault with Injury Burglary Res Criminal Damage Offences Gun Crime Knife Crime Theft Of Pedal Cycles Domestic Offences Homophobic Offences Racist Offences TNO Tier 2 Offences Serious Wounding Drug Supply Violence with Injury
Pages 26-33	Charts of Above Offences
Page 34	MPS Performance FYTD
Page 35	Organogram
Page 36	Glossary

Protective Marking	Not Protectively Marked
FOIA Exemption	None
Publication Scheme	No
Title and Version	Lambeth Community and Police Consultative Group Monthly Report
Purpose	To Inform Relevant Staff and Community of Performance
Relevant To	All Staff on Lambeth BOCU and community members
Author and warrant / pay number	Trevor Peplow PC 394 LX
OCU / Branch / Unit	Lambeth Police Performance and Review Unit @ Frank O'Neill House
Summary	Report is produced on a monthly basis
Date Created	August 2010
Review Date	Monthly as Required

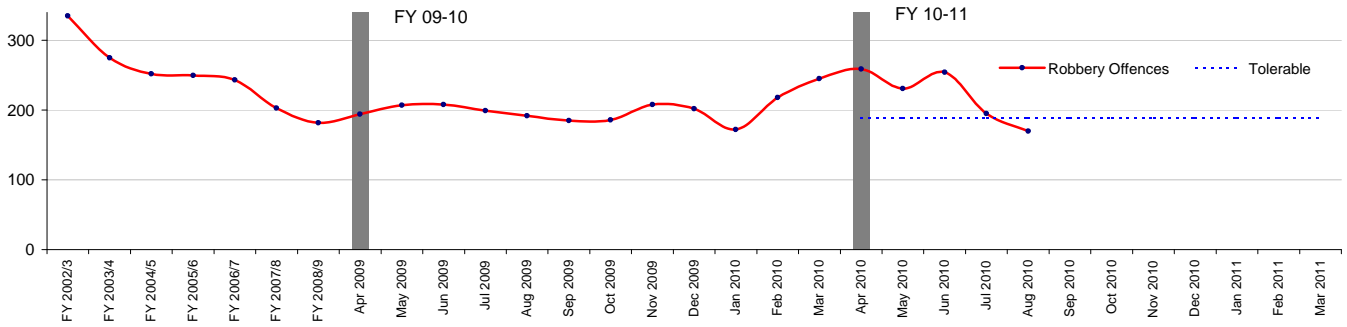
Call Type	Sector / Month	Apr 2010	May 2010	Jun 2010	Jul 2010	Aug 2010	Sep 2010	Oct 2010	Nov 2010	Dec 2010	Jan 2011	Feb 2011	Mar 2011
		Borough Average p/m	89%	87%	85%	86%	89%						
	Borough Average YTD	89%	88%	87%	87%	87%							

Average Response Time for Immediate Calls: 12 mins

CAD Achievements for Lambeth Borough

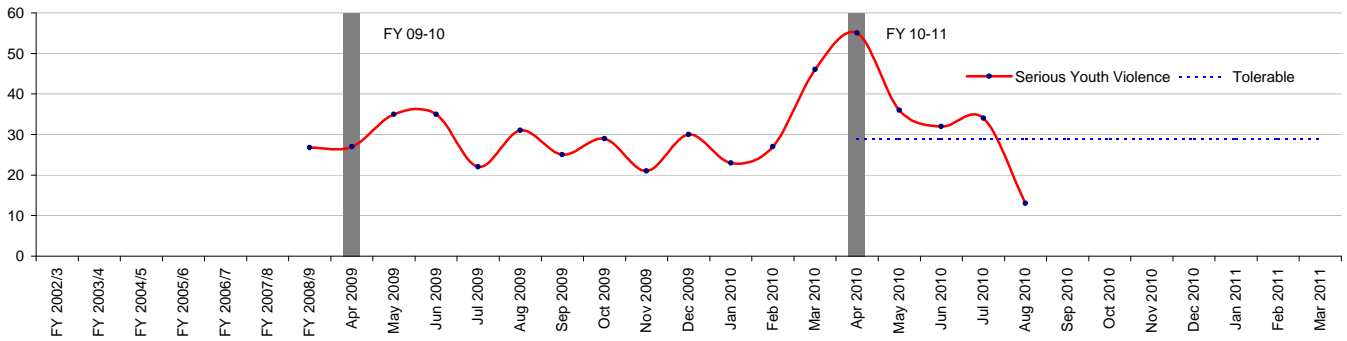


Robbery Offences



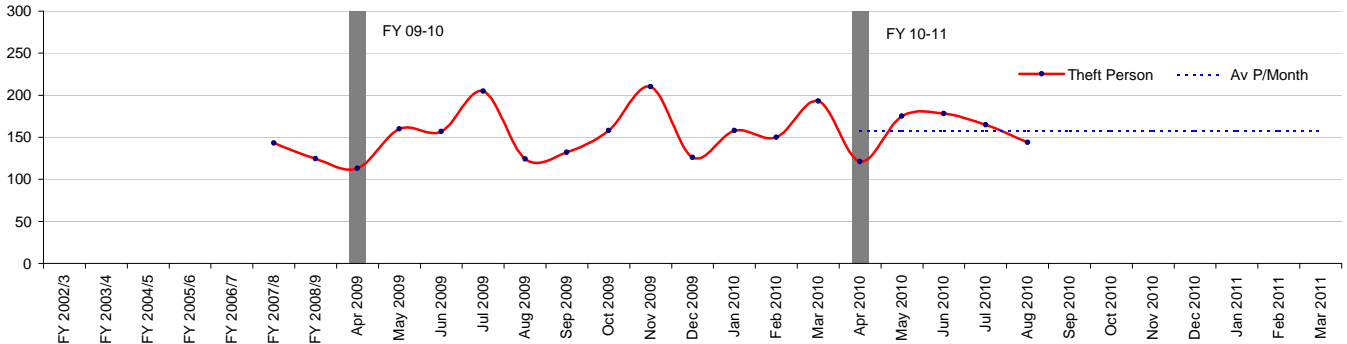
Robbery Offences	
Financial Year to Date Compared to Same Period in last Financial Year	
Current Offences FYTD:	11% Up
Current SD Rate FYTD:	14% (Up from 9%)
Monthly Average:	221.8
Target Offences (Monthly):	189.3
SD Target	19%

Serious Youth Violence



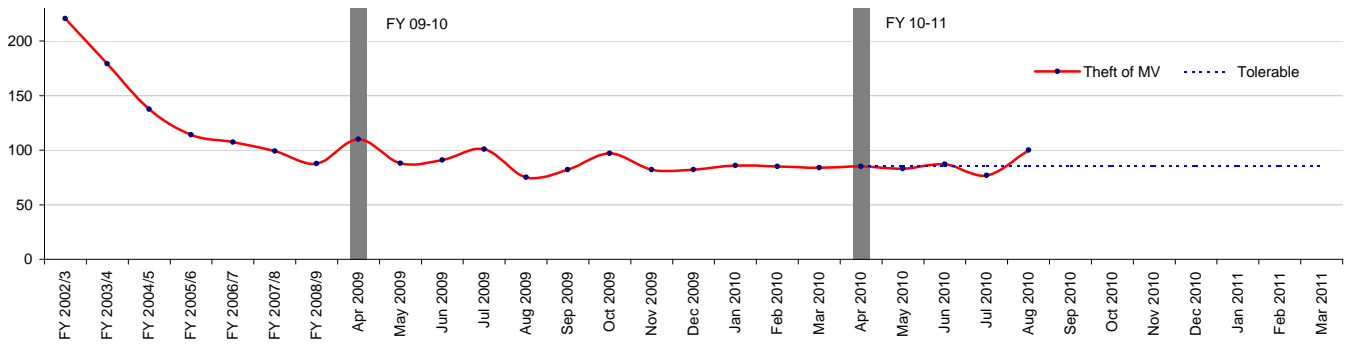
Serious Youth Violence	
Financial Year to Date Compared to Same Period in last Financial Year	
Current Offences FYTD:	13% Up
Current SD Rate FYTD:	0% (Down from 0%)
Monthly Average:	34
Target Offences (Monthly):	29.0
SD Target	0%

Theft Person



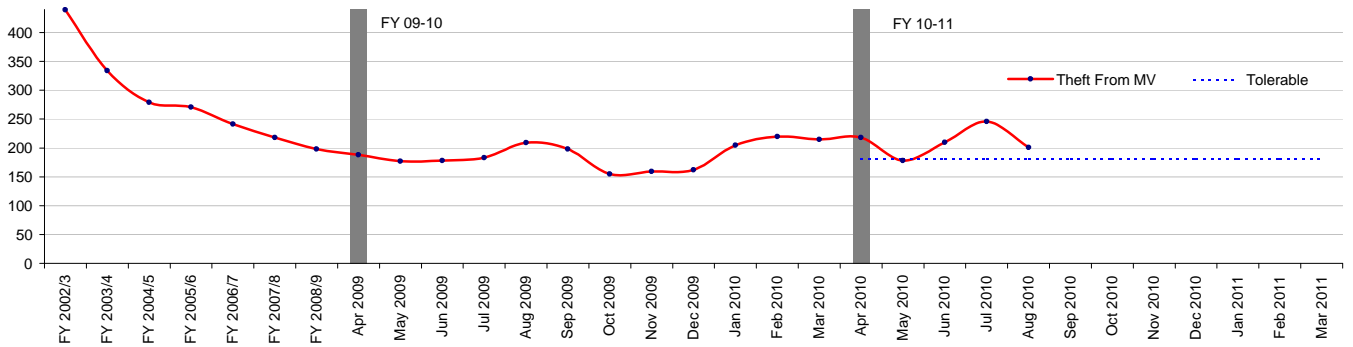
Theft Person	
Financial Year to Date Compared to Same Period in last Financial Year	
Current Offences FYTD:	3% Up
Current SD Rate FYTD:	1% (Down from 2%)
Monthly Average:	156.6
Target Offences (Monthly):	157.2
SD Target	0%

Theft of MV



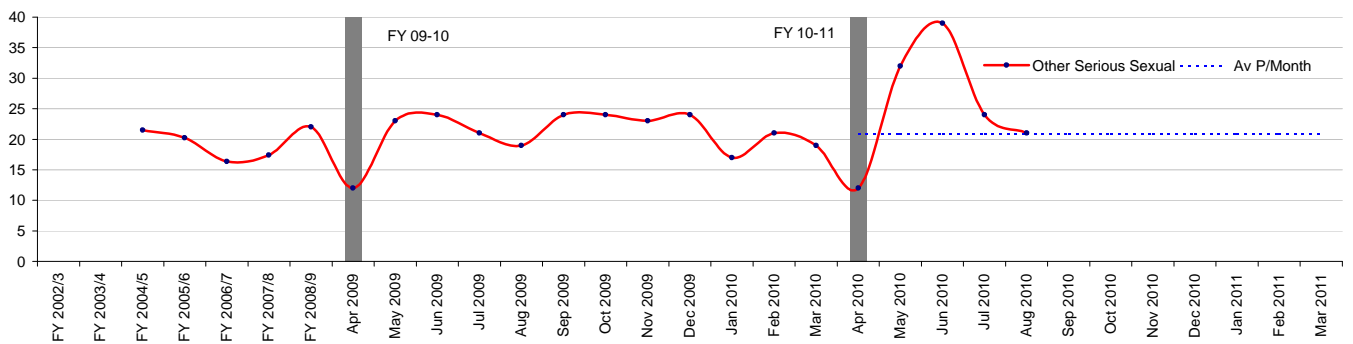
Theft of MV	
Financial Year to Date Compared to Same Period in last Financial Year	
Current Offences FYTD:	-7% Down
Current SD Rate FYTD:	5% (Down from 7%)
Monthly Average:	86.4
Target Offences (Monthly):	85.0
SD Target	8%

Theft From MV



Theft From MV	
Financial Year to Date Compared to Same Period in last Financial Year	
Current Offences FYTD:	13% Up
Current SD Rate FYTD:	3% (Down from 4%)
Monthly Average:	210.6
Target Offences (Monthly):	180.7
SD Target	8%

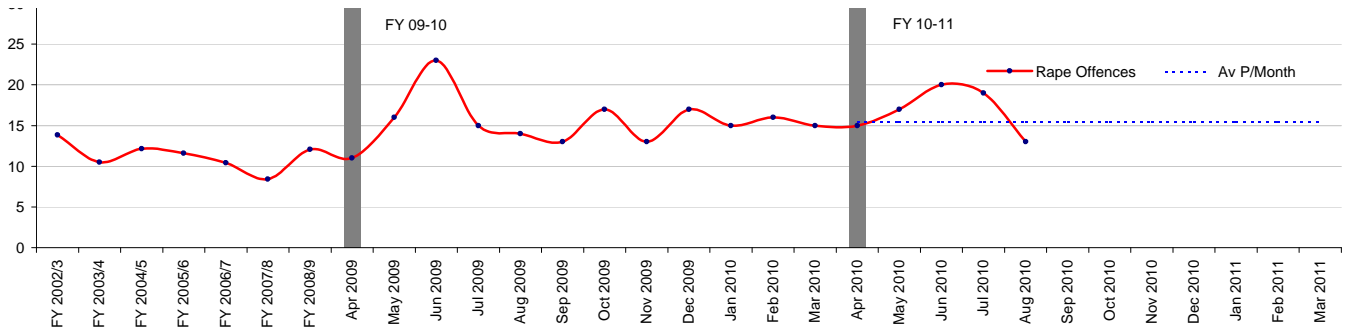
Other Serious Sexual



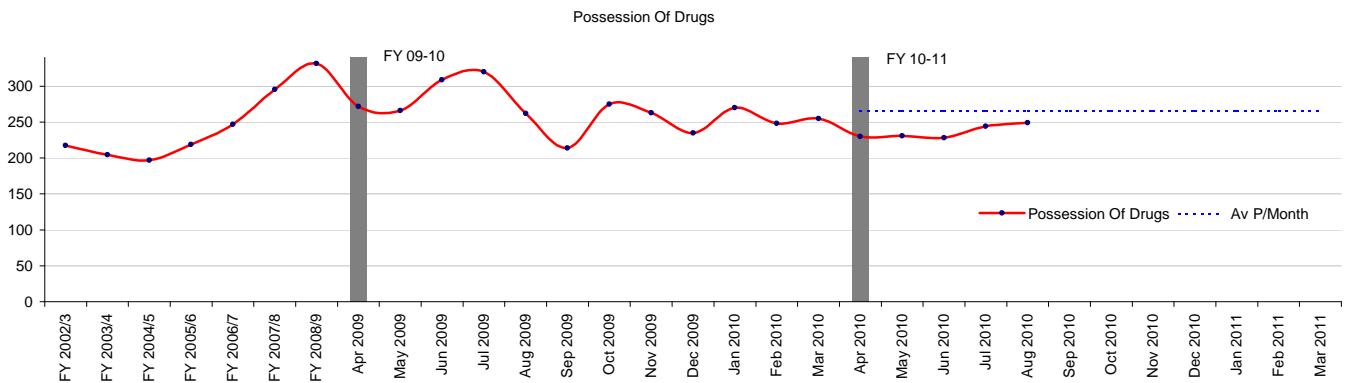
Other Serious Sexual	
Financial Year to Date Compared to Same Period in last Financial Year	
Current Offences FYTD:	29% Up
Current SD Rate FYTD:	28% (Up from 10%)
Monthly Average:	25.6
Target Offences (Monthly):	20.9
SD Target	0%

Rape Offences

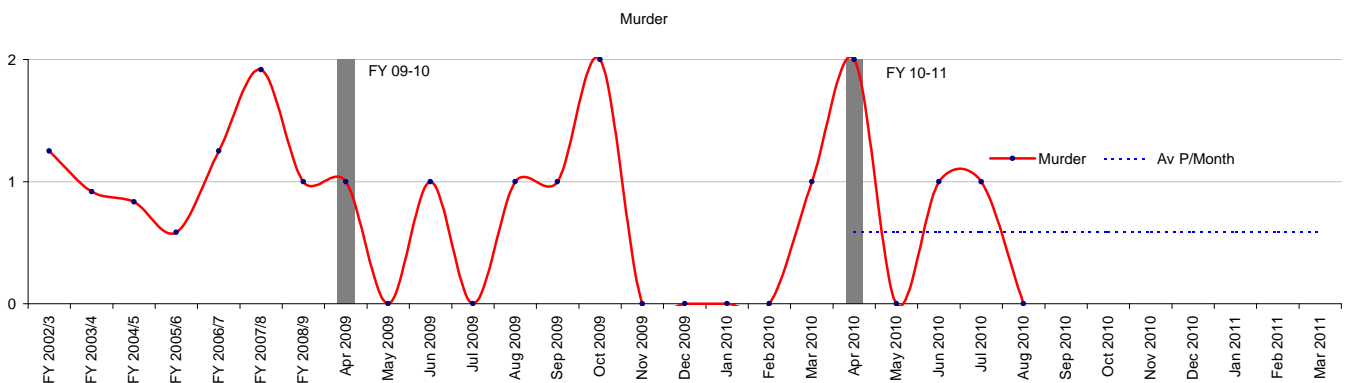




Rape Offences	
Financial Year to Date Compared to Same Period in last Financial Year	
Current Offences FYTD:	6% Up
Current SD Rate FYTD:	15% (Down from 24%)
Monthly Average:	16.8
Target Offences (Monthly):	15.4
SD Target	35%

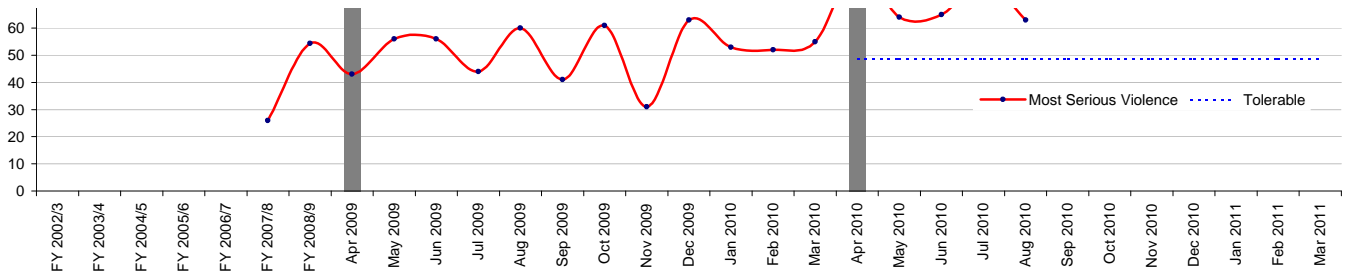


Possession Of Drugs	
Financial Year to Date Compared to Same Period in last Financial Year	
Current Offences FYTD:	-17% Down
Current SD Rate FYTD:	73% (Down from 81%)
Monthly Average:	236.4
Target Offences (Monthly):	265.8
SD Target	0%

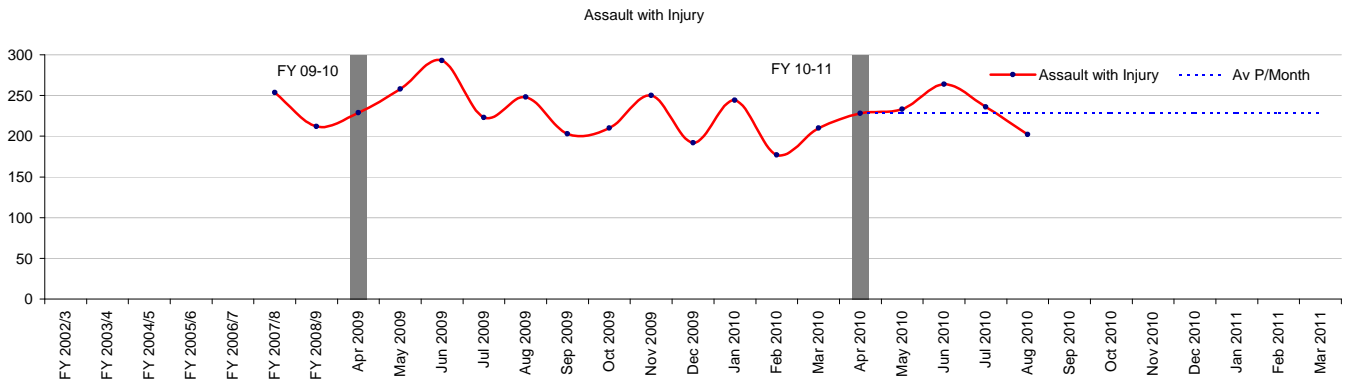


Murder	
Financial Year to Date Compared to Same Period in last Financial Year	
Current Offences FYTD:	33% Up
Current SD Rate FYTD:	175% (Up from 100%)
Monthly Average:	0.8
Target Offences (Monthly):	0.6
SD Target	0%

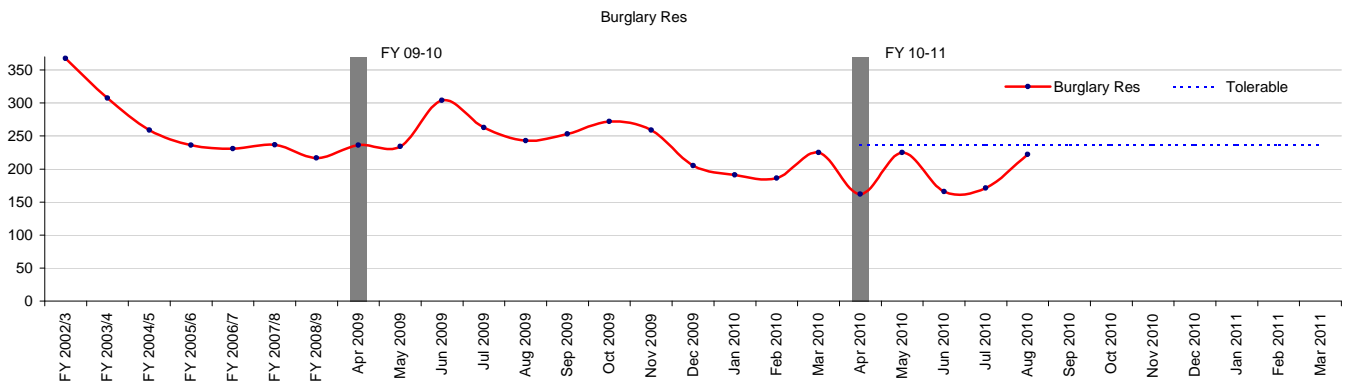




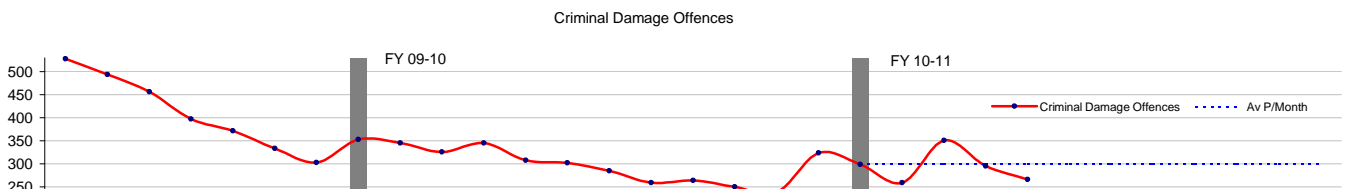
Most Serious Violence	
Financial Year to Date Compared to Same Period in last Financial Year	
Current Offences FYTD:	36% Up
Current SD Rate FYTD:	37% (Up from 31%)
Monthly Average:	70.6
Target Offences (Monthly):	48.7
SD Target	32%

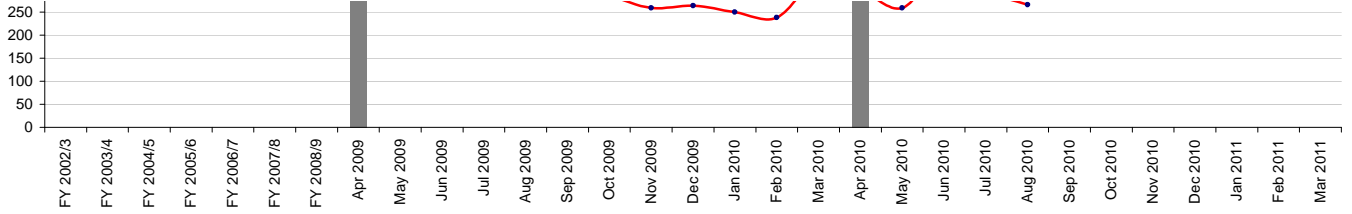


Assault with Injury	
Financial Year to Date Compared to Same Period in last Financial Year	
Current Offences FYTD:	-7% Down
Current SD Rate FYTD:	28% (Up from 25%)
Monthly Average:	232.6
Target Offences (Monthly):	228.1
SD Target	0%

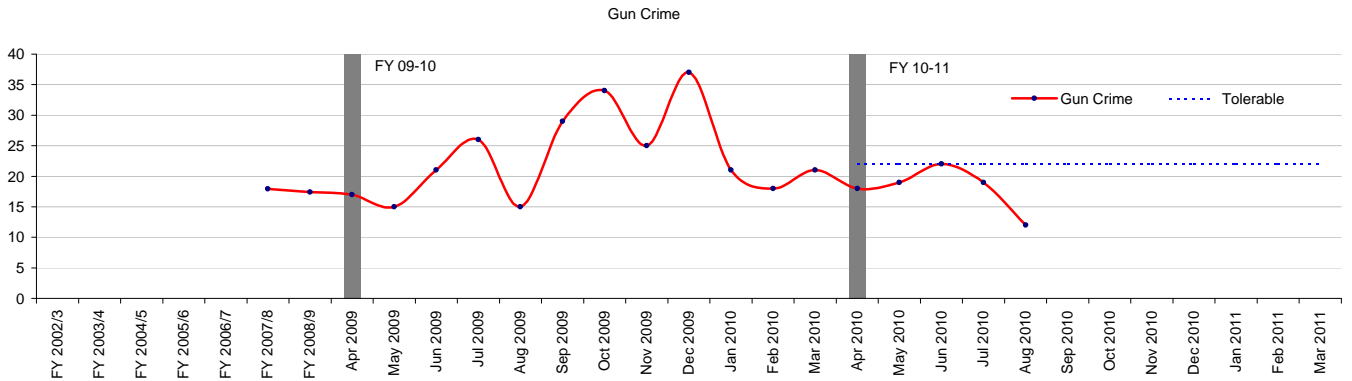


Burglary Res	
Financial Year to Date Compared to Same Period in last Financial Year	
Current Offences FYTD:	-26% Down
Current SD Rate FYTD:	11% (Down from 17%)
Monthly Average:	189.2
Target Offences (Monthly):	236.9
SD Target	16%

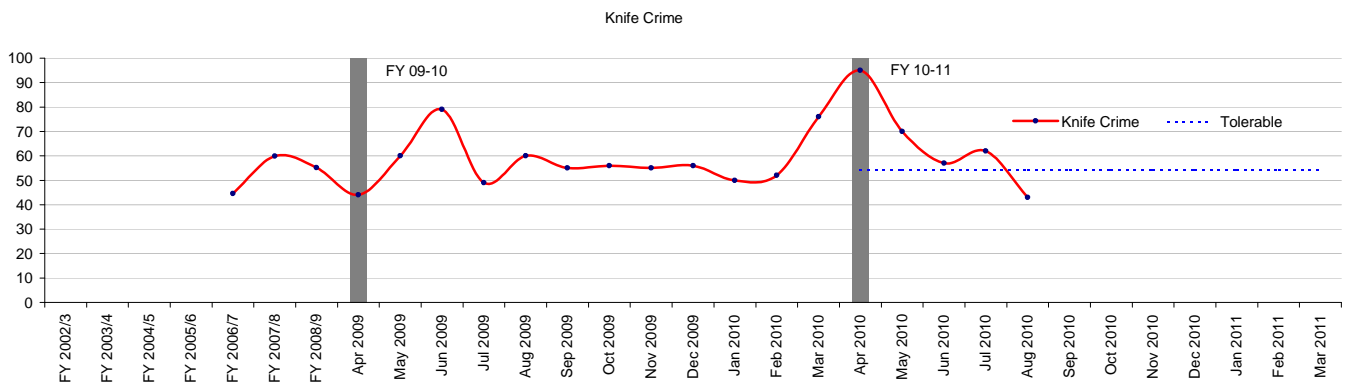




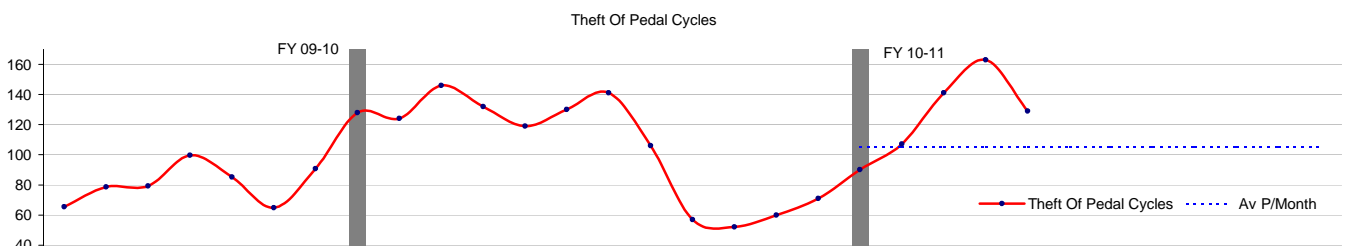
Criminal Damage Offences	
Financial Year to Date Compared to Same Period in last Financial Year	
Current Offences FYTD:	-12% Down
Current SD Rate FYTD:	12% (Up from 11%)
Monthly Average:	294
Target Offences (Monthly):	299.9
SD Target	0%

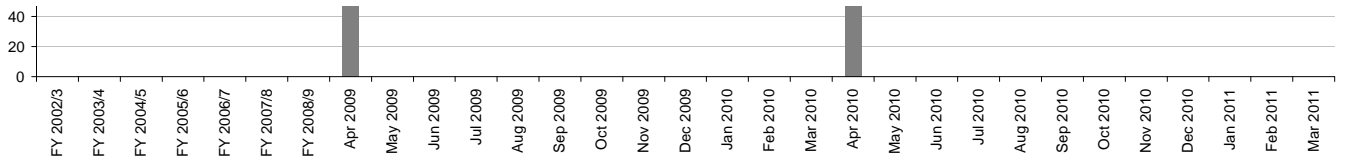


Gun Crime	
Financial Year to Date Compared to Same Period in last Financial Year	
Current Offences FYTD:	-4% Down
Current SD Rate FYTD:	30% (Up from 18%)
Monthly Average:	18
Target Offences (Monthly):	22.1
SD Target	0%

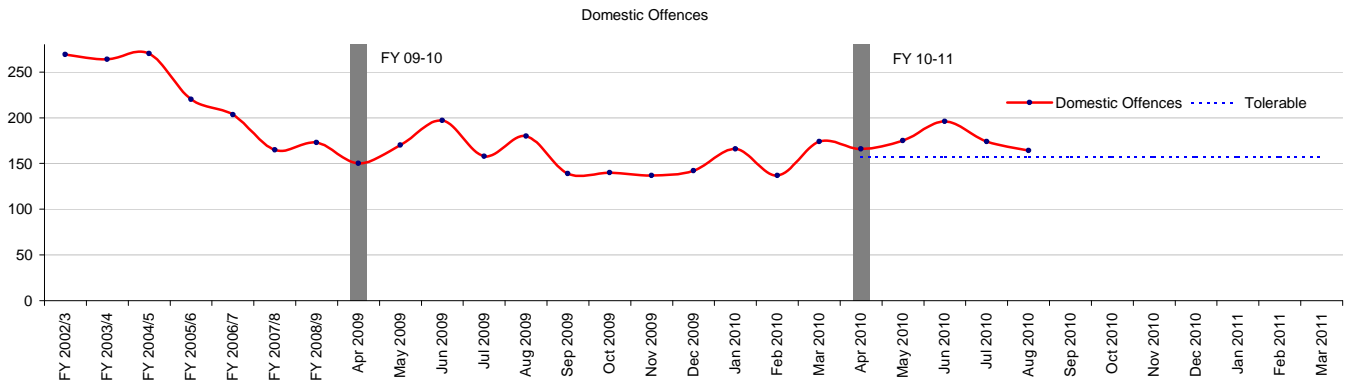


Knife Crime	
Financial Year to Date Compared to Same Period in last Financial Year	
Current Offences FYTD:	12% Up
Current SD Rate FYTD:	22% (Up from 18%)
Monthly Average:	65.4
Target Offences (Monthly):	54.2
SD Target	0%

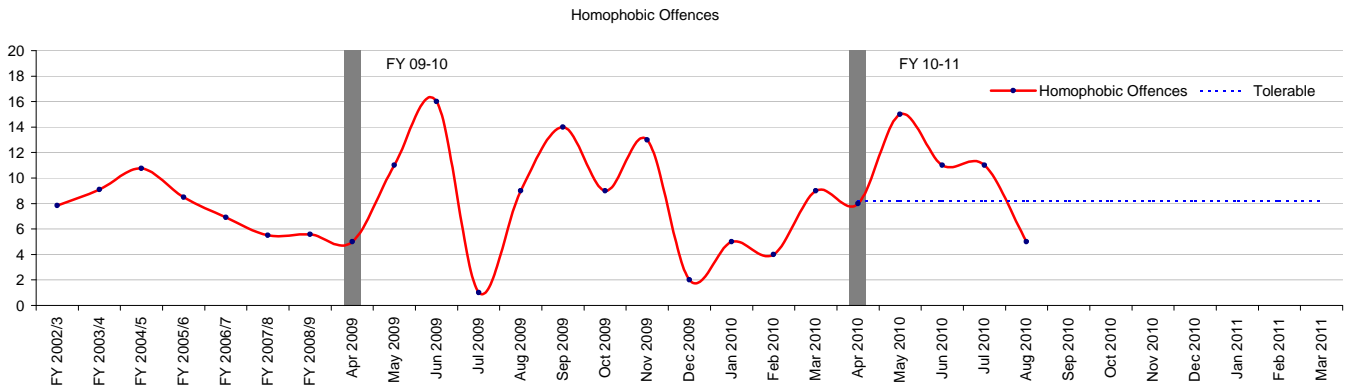




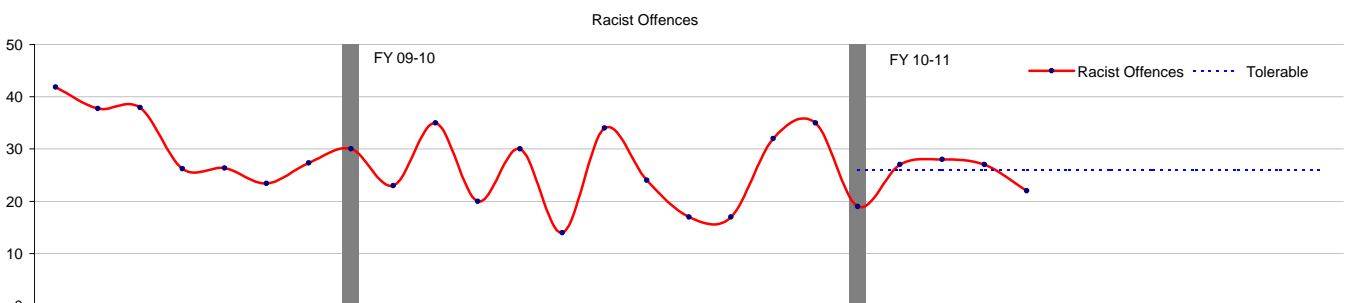
Theft Of Pedal Cycles	
Financial Year to Date Compared to Same Period in last Financial Year	
Current Offences FYTD:	-3% Down
Current SD Rate FYTD:	1% (Down from 2%)
Monthly Average:	126
Target Offences (Monthly):	105.5
SD Target	0%

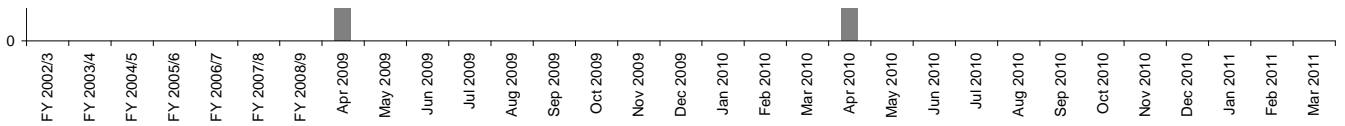


Domestic Offences	
Financial Year to Date Compared to Same Period in last Financial Year	
Current Offences FYTD:	2% Up
Current SD Rate FYTD:	44% (Up from 44%)
Monthly Average:	175
Target Offences (Monthly):	157.5
SD Target	45%

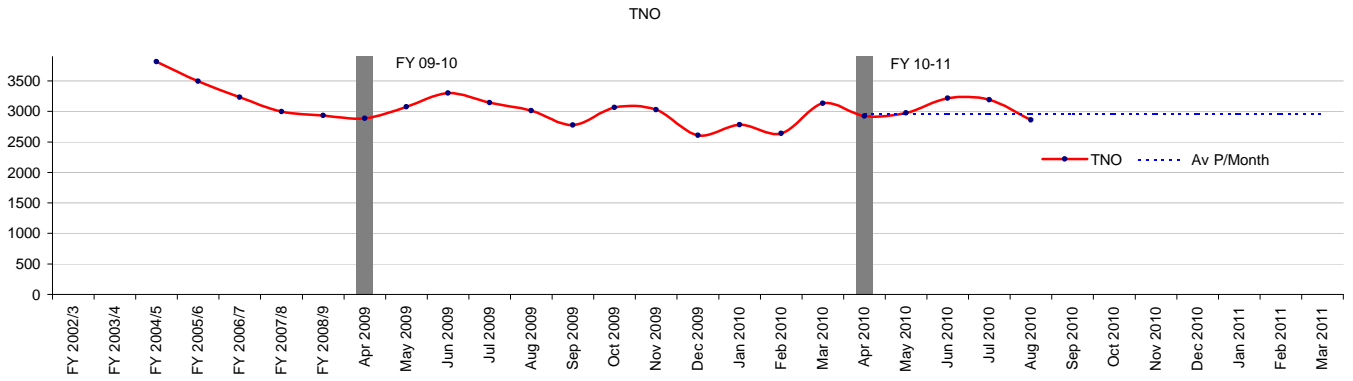


Homophobic Offences	
Financial Year to Date Compared to Same Period in last Financial Year	
Current Offences FYTD:	19% Up
Current SD Rate FYTD:	38% (Down from 43%)
Monthly Average:	10
Target Offences (Monthly):	8.2
SD Target	44%

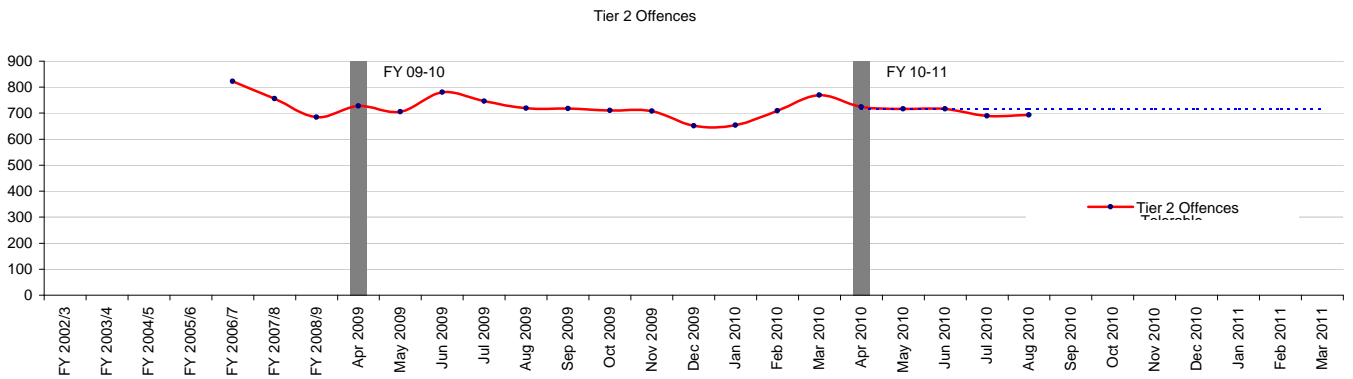




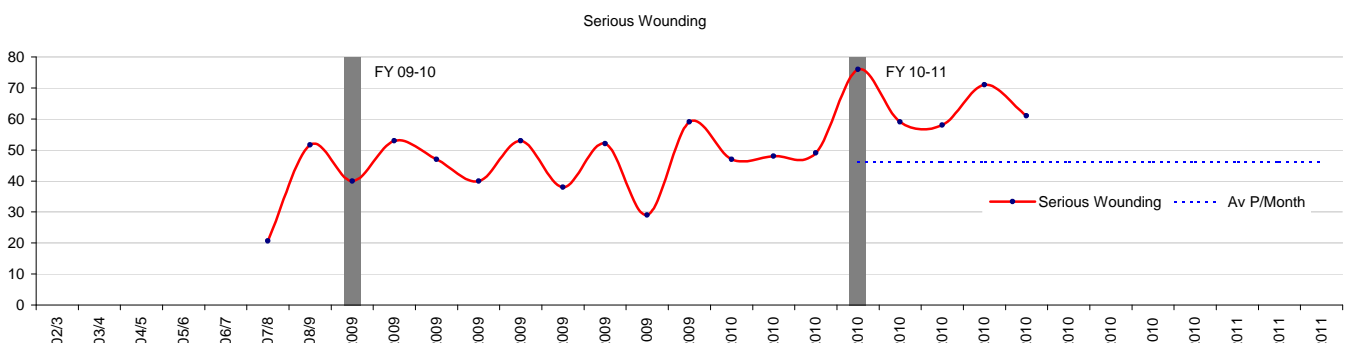
Racist Offences	
Financial Year to Date Compared to Same Period in last Financial Year	
Current Offences FYTD:	-11% Down
Current SD Rate FYTD:	41% (Down from 55%)
Monthly Average:	24.6
Target Offences (Monthly):	25.9
SD Target	50%



TNO	
Financial Year to Date Compared to Same Period in last Financial Year	
Current Offences FYTD:	-2% Down
Current SD Rate FYTD:	20% (Down from 23%)
Monthly Average:	3034.2
Target Offences (Monthly):	2955.0
SD Target	0%

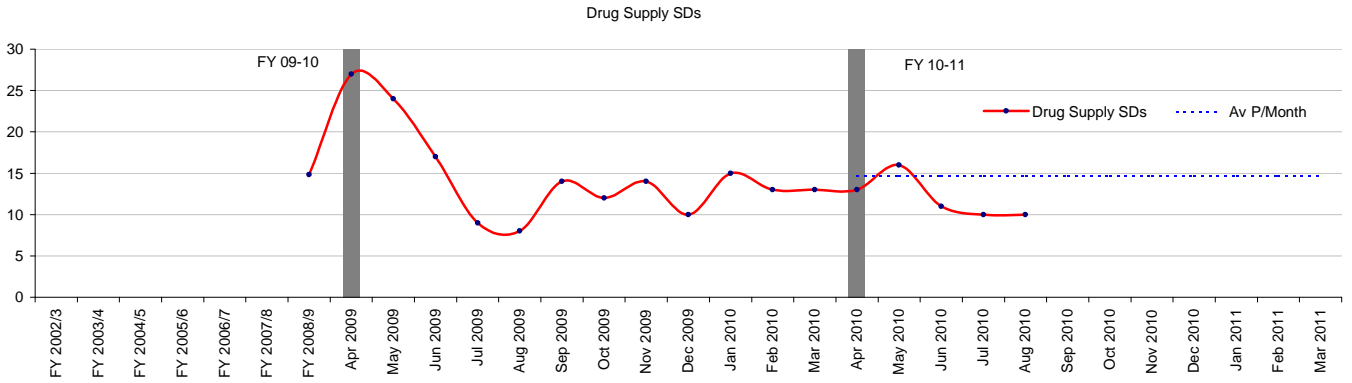


Tier 2 Offences	
Financial Year to Date Compared to Same Period in last Financial Year	
Current Offences FYTD:	-4% Down
Current SD Rate FYTD:	9% (Down from 10%)
Monthly Average:	708
Target Offences (Monthly):	716.6
SD Target	13%

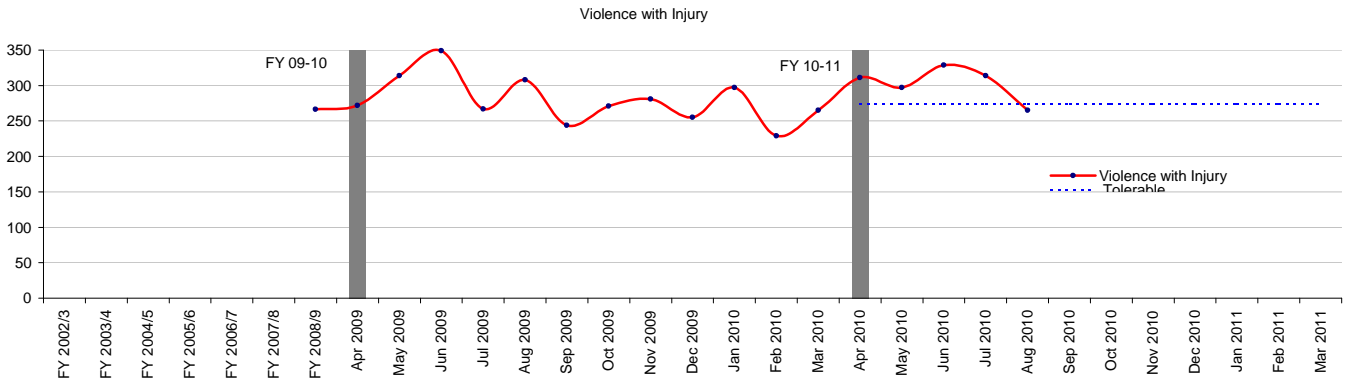


FY 2002/3
 FY 2003/4
 FY 2004/5
 FY 2005/6
 FY 2006/7
 FY 2007/8
 FY 2008/9
 Apr 2009
 May 2009
 Jun 2009
 Jul 2009
 Aug 2009
 Sep 2009
 Oct 2009
 Nov 2009
 Dec 2009
 Jan 2010
 Feb 2010
 Mar 2010
 Apr 2010
 May 2010
 Jun 2010
 Jul 2010
 Aug 2010
 Sep 2010
 Oct 2010
 Nov 2010
 Dec 2010
 Jan 2011
 Feb 2011
 Mar 2011

Serious Wounding	
Financial Year to Date Compared to Same Period in last Financial Year	
Current Offences FYTD:	39% Up
Current SD Rate FYTD:	35% (Up from 29%)
Monthly Average:	65
Target Offences (Monthly):	46.3
SD Target	0%

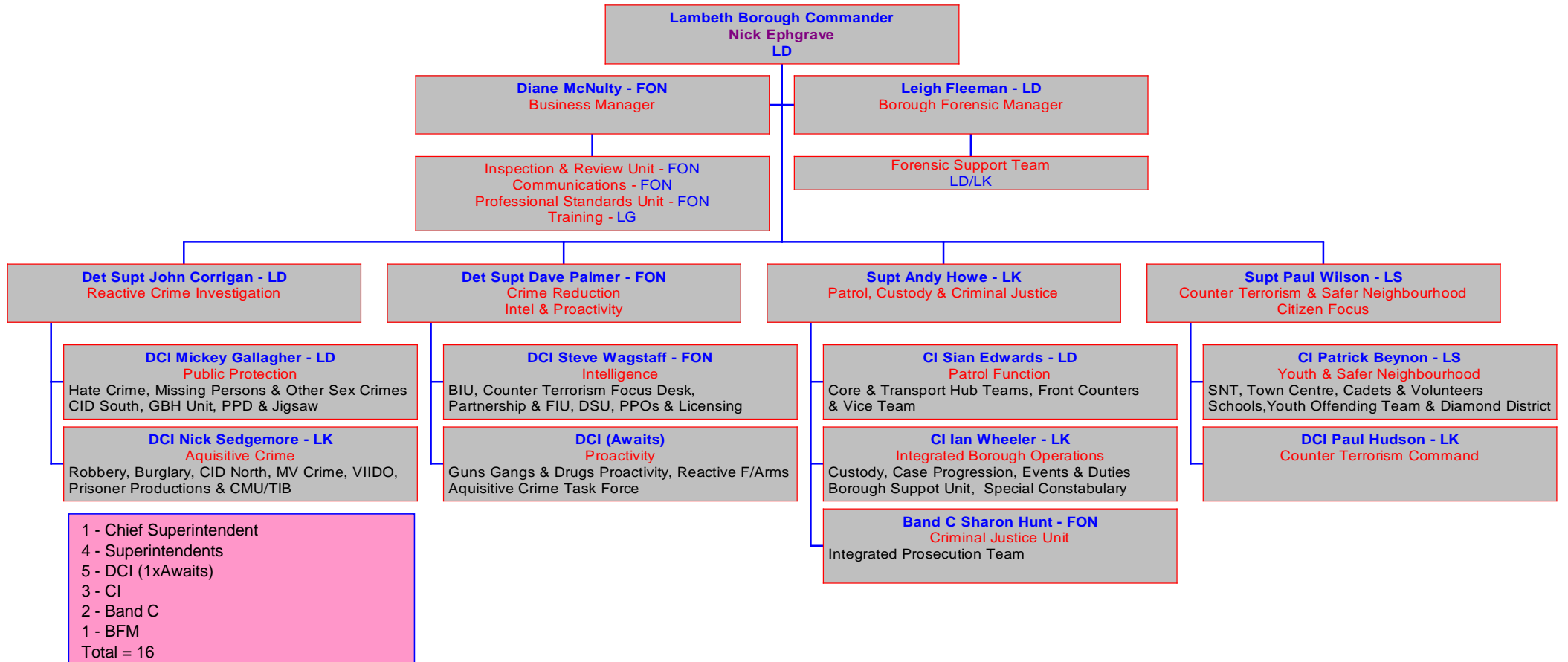


Drug Supply SDs	
Financial Year to Date Compared to Same Period in last Financial Year	
Current Offences FYTD:	-29% Down
Current SD Rate FYTD:	0% (from 0%)
Monthly Average:	12
Target Offences (Monthly):	14.7
SD Target	0%



Violence with Injury	
Financial Year to Date Compared to Same Period in last Financial Year	
Current Offences FYTD:	0% Up
Current SD Rate FYTD:	30% (Up from 26%)
Monthly Average:	303.2
Target Offences (Monthly):	273.7
SD Target	35%

Lambeth Borough Police Organisational Structure



- 1 - Chief Superintendent
- 4 - Superintendents
- 5 - DCI (1xAwaits)
- 3 - CI
- 2 - Band C
- 1 - BFM
- Total = 16

Glossary

'Sanctioned' Detection Definition

A 'Sanctioned' Detection is where an allegation has resulted in either a charge, a summons, a caution, a formal warning, a youth reprimand or an offence being taken into consideration i.e. in addition to the charge for which the person is before a court, other offences can be admitted by the defendant and the court asked to take these offences into consideration in passing sentence.

Total Robbery

Combination of Robbery and Commercial Robbery

Robbery

Theft where force or threat of force is made to a person at the time or immediately before in order to steal

TNO Total Notifiable Offences

All notifiable offences which are recorded by police and a crime report is generated

I-Call

Police graded response to answer a 999 call received in the Police Control Room with 10 seconds. Response Time as per Policing Pledge for urban areas is 12 minutes (within 20 mins for rural areas). Giving an estimated time of arrival (TOA) and getting there safely and quickly as possible.

CAD

Computer aided dispatch which is the computer system used within Metropolitan Police Control rooms to record incidents