

# Community Police Consultative Group for Lambeth



## Monthly Police Report

**CPCGLambeth**

**Data Set: September 2010**

(Starting from April Data)

**Financial Year 2010-2011**

The CPCG report will be produced on a Monthly basis by the Lambeth Police  
Inspection & Review Unit

**Not Protectively Marked**



**INDEX**

**LAMBETH BOROUGH**

<b>Page 1</b>	<b>CAD Achievements</b>
<b>Pages 2-27</b>	<b>Classified &amp; Confirmed Offences:</b> <b>Robbery Offences</b> <b>Serious Youth Violence</b> <b>Theft Person</b> <b>Theft of MV</b> <b>Theft From MV</b> <b>Other Serious Sexual</b> <b>Rape Offences</b> <b>Possession Of Drugs</b> <b>Murder</b> <b>Most Serious Violence</b> <b>Assault with Injury</b> <b>Burglary Res</b> <b>Criminal Damage Offences</b> <b>Gun Crime</b> <b>Knife Crime</b> <b>Theft Of Pedal Cycles</b> <b>Domestic Offences</b> <b>Homophobic Offences</b> <b>Racist Offences</b> <b>TNO</b> <b>Tier 2 Offences</b> <b>Serious Wounding</b> <b>Drug Supply</b> <b>Violence with Injury</b>
<b>Pages 28-36</b>	<b>Charts of Above Offences</b>
<b>Page 37</b>	<b>MPS Performance FYTD</b>
<b>Page 38</b>	<b>Organogram</b>
<b>Page 39</b>	<b>Glossary</b>

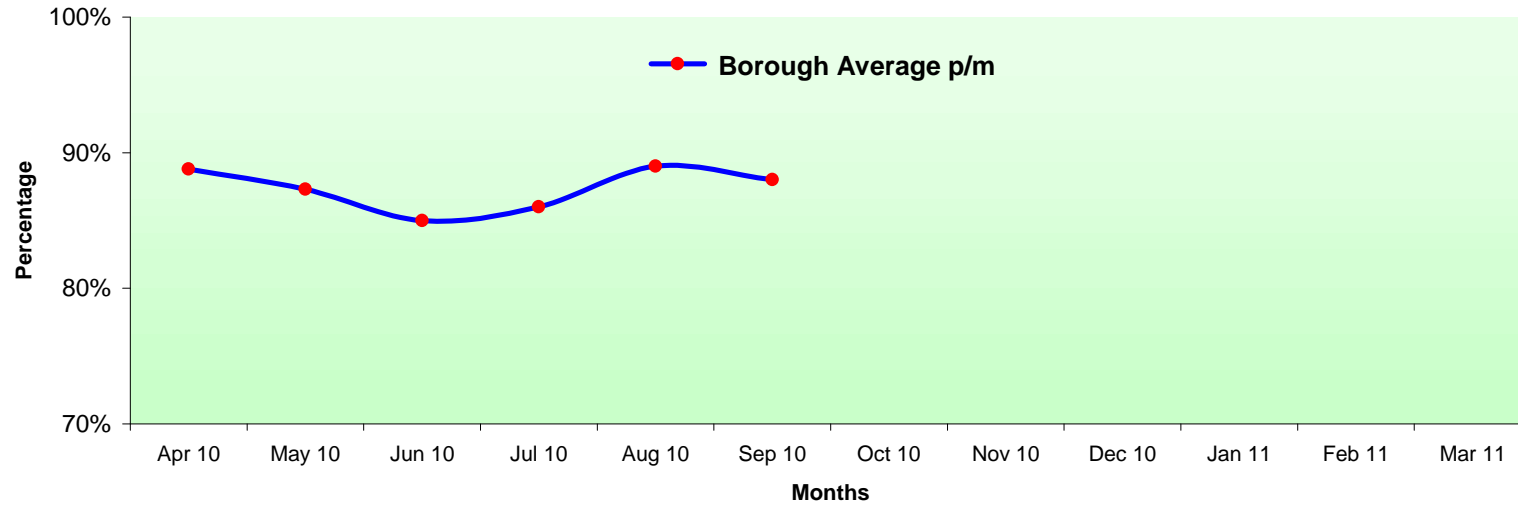
Protective Marking	Not Protectively Marked
FOIA Exemption	None
Publication Scheme	No
Title and Version	Lambeth Community and Police Consultative Group Monthly Report
Purpose	To Inform Relevant Staff and Community of Performance
Relevant To	All Staff on Lambeth BOCU and community members
Author and warrant / pay number	Trevor Peplow PC 394 LX
OCU / Branch / Unit	Lambeth Police Performance and Review Unit @ Frank O'Neill House
Summary	Report is produced on a monthly basis
Date Created	September 2010
Review Date	Monthly as Required

# CAD Achievement Trends

Call Type	Sector / Month	Apr 2010	May 2010	Jun 2010	Jul 2010	Aug 2010	Sep 2010	Oct 2010	Nov 2010	Dec 2010	Jan 2011	Feb 2011	Mar 2011
		Borough Average p/m	89%	87%	85%	86%	89%	88%					
Borough Average YTD		89%	88%	87%	87%	87%	87%						

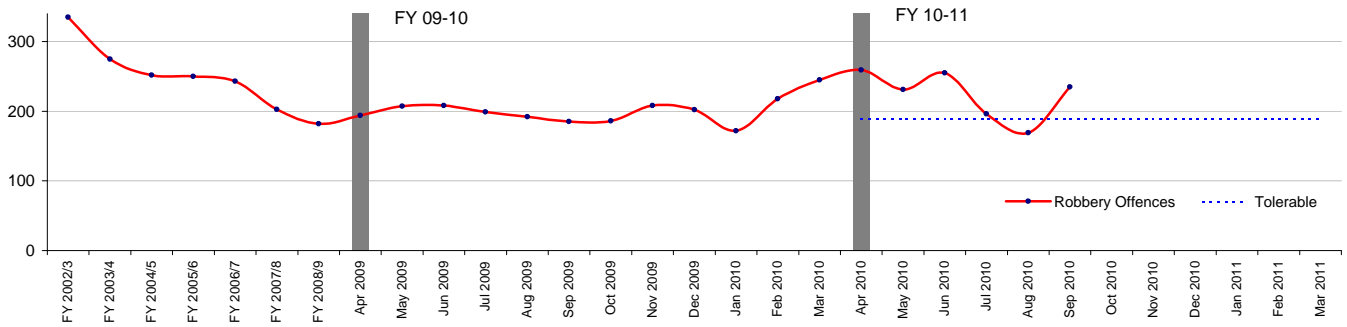
Average Response Time for Immediate Calls: 12 mins

CAD Achievements for Lambeth Borough



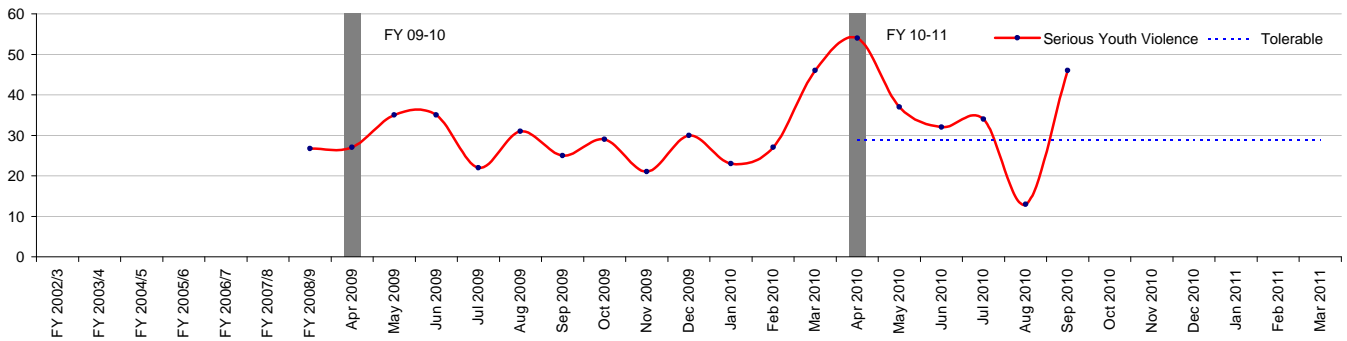
## Community Police Consultative Group for Lambeth-Monthly Report

### Robbery Offences



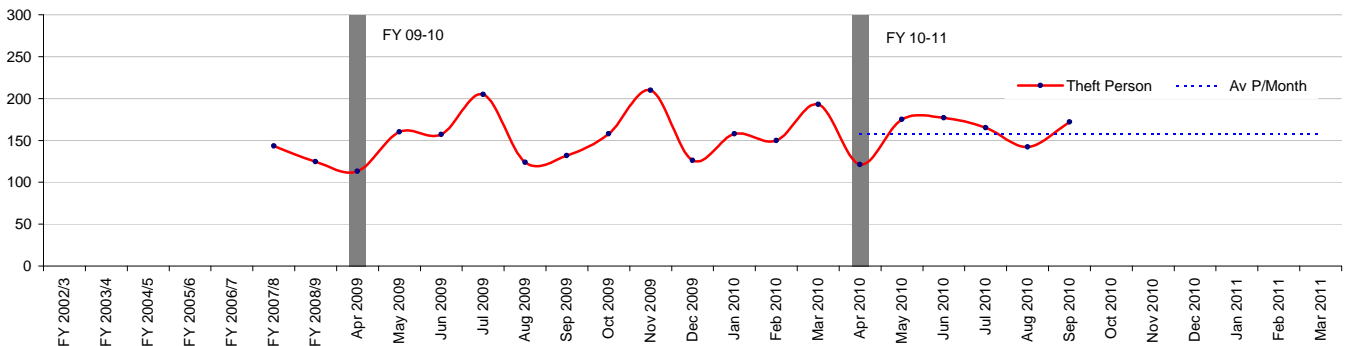
Robbery Offences	
<i>Financial Year to Date Compared to Same Period in last Financial Year</i>	
<b>Current Offences FYTD:</b>	14% Up
<b>Current SD Rate FYTD:</b>	13% (Up from 9%)
<b>Monthly Average:</b>	224.2
<b>Target Offences (Monthly):</b>	189.3
<b>SD Target</b>	19%

### Serious Youth Violence



Serious Youth Violence	
<i>Financial Year to Date Compared to Same Period in last Financial Year</i>	
<b>Current Offences FYTD:</b>	23% Up
<b>Current SD Rate FYTD:</b>	0% (Down from 0%)
<b>Monthly Average:</b>	36
<b>Target Offences (Monthly):</b>	29.0
<b>SD Target</b>	0%

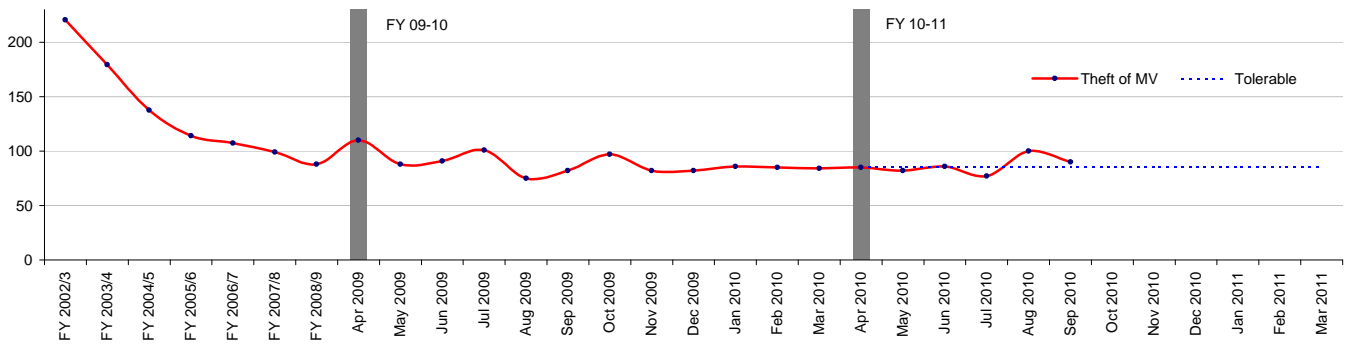
### Theft Person



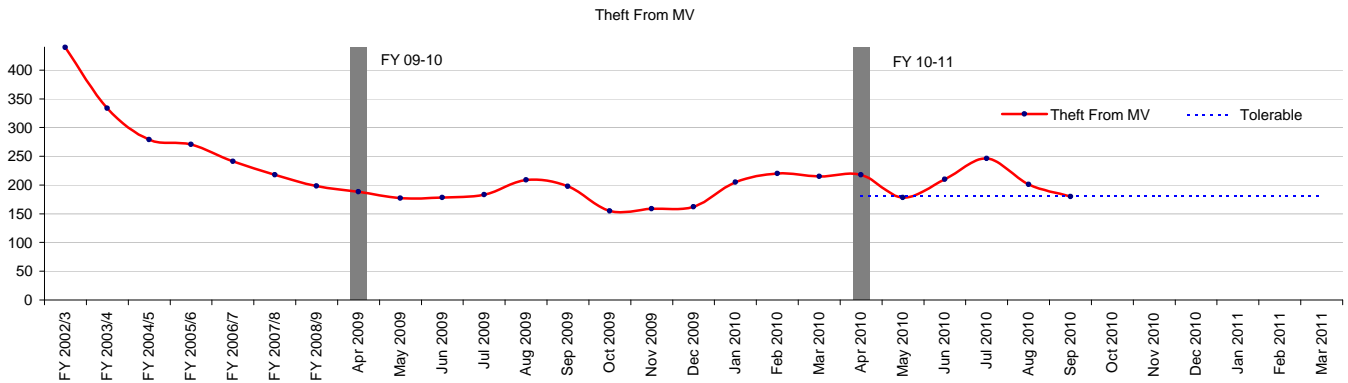
Theft Person	
<i>Financial Year to Date Compared to Same Period in last Financial Year</i>	
<b>Current Offences FYTD:</b>	7% Up
<b>Current SD Rate FYTD:</b>	1% (Down from 2%)
<b>Monthly Average:</b>	158.7
<b>Target Offences (Monthly):</b>	157.2
<b>SD Target</b>	0%

## Community Police Consultative Group for Lambeth-Monthly Report

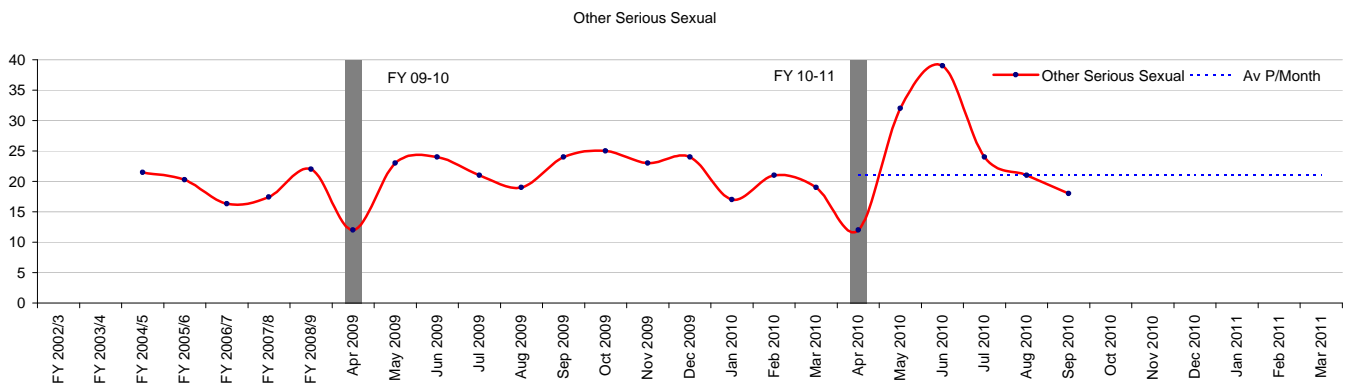
Theft of MV



Theft of MV	
Financial Year to Date Compared to Same Period in last Financial Year	
Current Offences FYTD:	-5% Down
Current SD Rate FYTD:	5% (Down from 8%)
Monthly Average:	86.7
Target Offences (Monthly):	85.0
SD Target	8%



Theft From MV	
Financial Year to Date Compared to Same Period in last Financial Year	
Current Offences FYTD:	9% Up
Current SD Rate FYTD:	3% (Down from 3%)
Monthly Average:	205.5
Target Offences (Monthly):	180.7
SD Target	8%

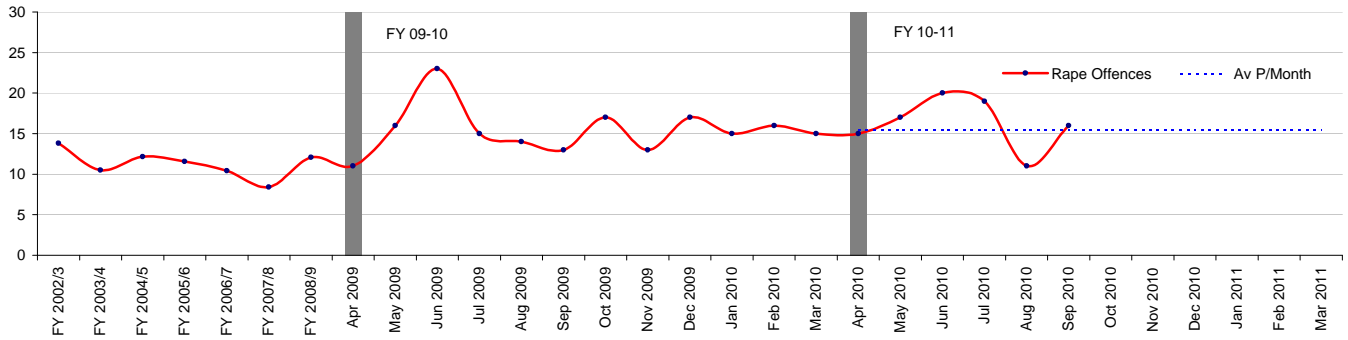


Other Serious Sexual	
Financial Year to Date Compared to Same Period in last Financial Year	
Current Offences FYTD:	19% Up
Current SD Rate FYTD:	25% (Up from 13%)
Monthly Average:	24.3
Target Offences (Monthly):	21.0
SD Target	0%

Rape Offences

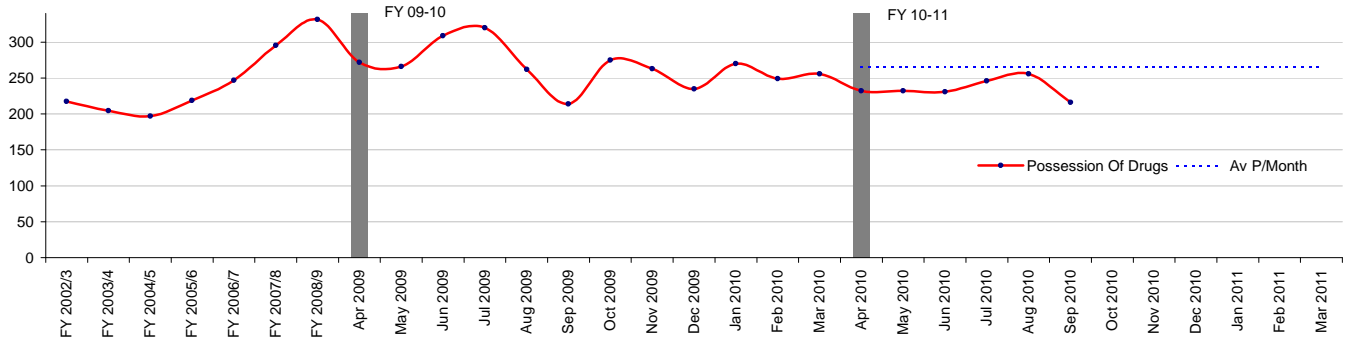
## Community Police Consultative Group for Lambeth-Monthly Report

Rape Offences



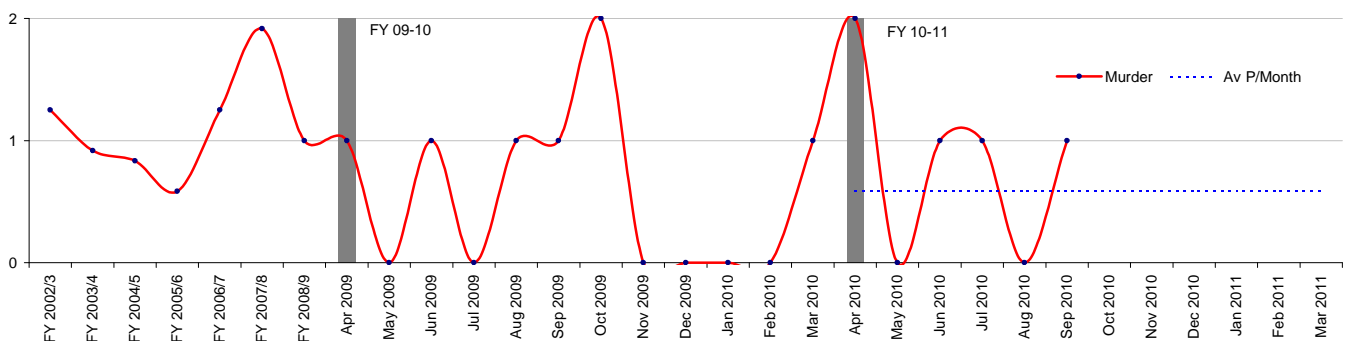
Rape Offences	
<i>Financial Year to Date Compared to Same Period in last Financial Year</i>	
<b>Current Offences FYTD:</b>	7% Up
<b>Current SD Rate FYTD:</b>	16% (Down from 25%)
<b>Monthly Average:</b>	16.3
<b>Target Offences (Monthly):</b>	15.4
<b>SD Target</b>	35%

Possession Of Drugs



Possession Of Drugs	
<i>Financial Year to Date Compared to Same Period in last Financial Year</i>	
<b>Current Offences FYTD:</b>	-14% Down
<b>Current SD Rate FYTD:</b>	78% (Down from 87%)
<b>Monthly Average:</b>	235.5
<b>Target Offences (Monthly):</b>	265.9
<b>SD Target</b>	0%

Murder

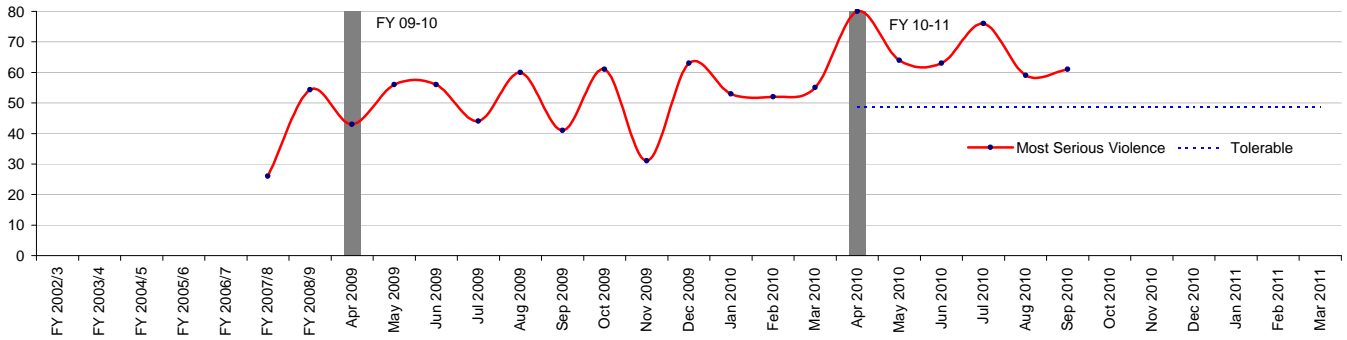


Murder	
<i>Financial Year to Date Compared to Same Period in last Financial Year</i>	
<b>Current Offences FYTD:</b>	25% Up
<b>Current SD Rate FYTD:</b>	140% (Up from 75%)
<b>Monthly Average:</b>	0.8
<b>Target Offences (Monthly):</b>	0.6
<b>SD Target</b>	0%

Most Serious Violence

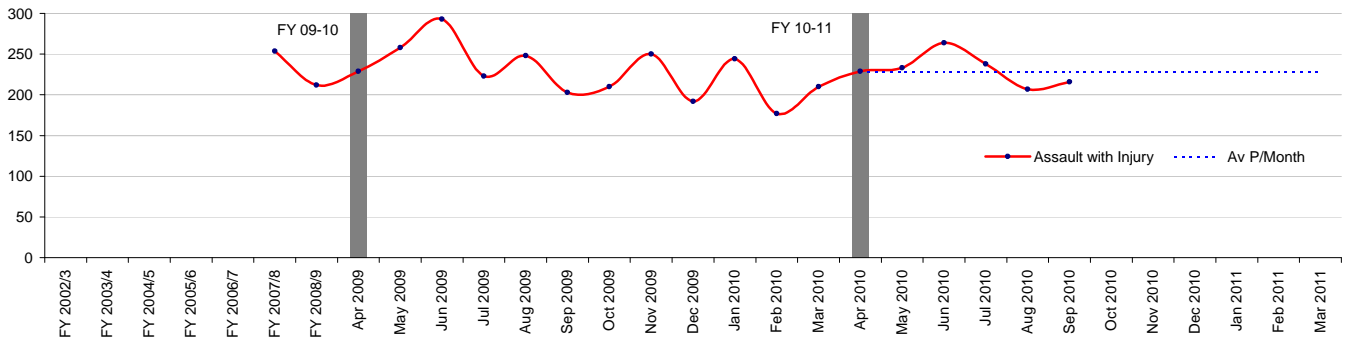
## Community Police Consultative Group for Lambeth-Monthly Report

Most Serious Violence



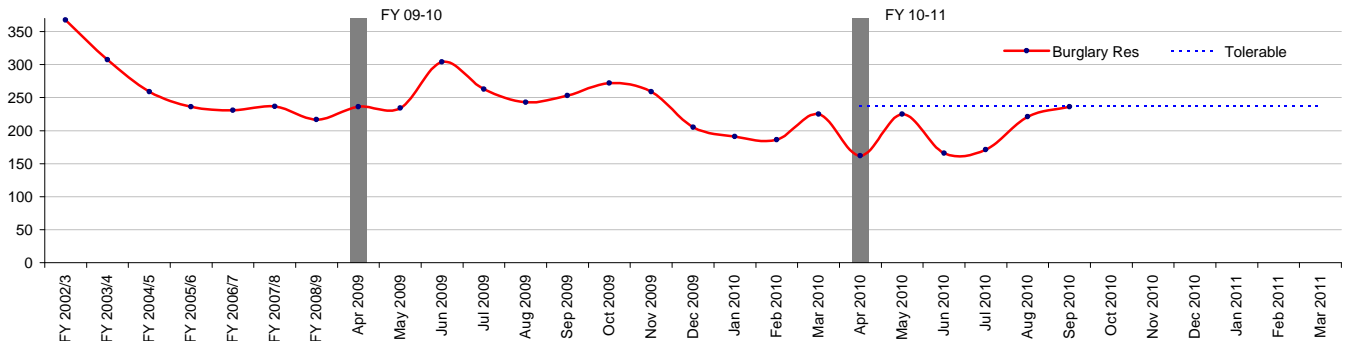
Most Serious Violence	
Financial Year to Date Compared to Same Period in last Financial Year	
<b>Current Offences FYTD:</b>	34% Up
<b>Current SD Rate FYTD:</b>	36% (Up from 34%)
<b>Monthly Average:</b>	67.2
<b>Target Offences (Monthly):</b>	48.7
<b>SD Target</b>	32%

Assault with Injury



Assault with Injury	
Financial Year to Date Compared to Same Period in last Financial Year	
<b>Current Offences FYTD:</b>	-5% Down
<b>Current SD Rate FYTD:</b>	29% (Up from 27%)
<b>Monthly Average:</b>	231.2
<b>Target Offences (Monthly):</b>	228.1
<b>SD Target</b>	0%

Burglary Res

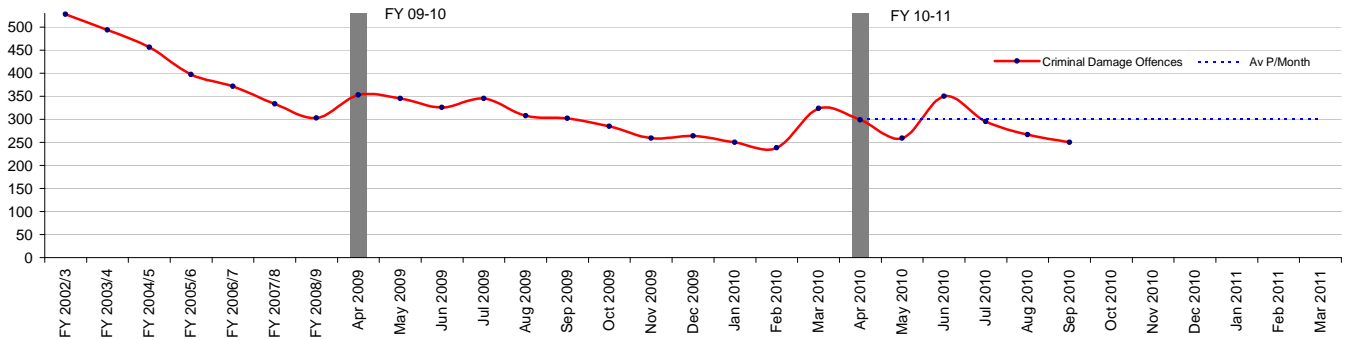


Burglary Res	
Financial Year to Date Compared to Same Period in last Financial Year	
<b>Current Offences FYTD:</b>	-23% Down
<b>Current SD Rate FYTD:</b>	10% (Down from 16%)
<b>Monthly Average:</b>	196.8
<b>Target Offences (Monthly):</b>	236.9
<b>SD Target</b>	16%

Criminal Damage Offences

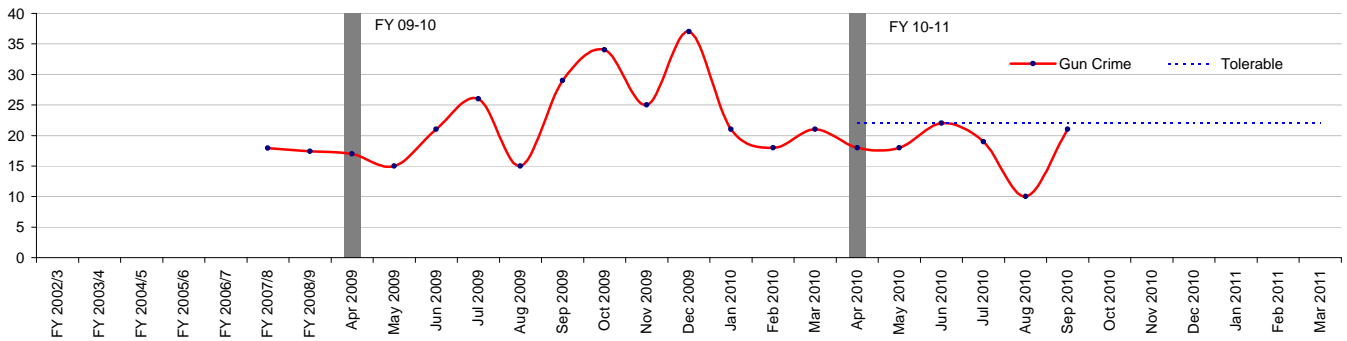
## Community Police Consultative Group for Lambeth-Monthly Report

Criminal Damage Offences



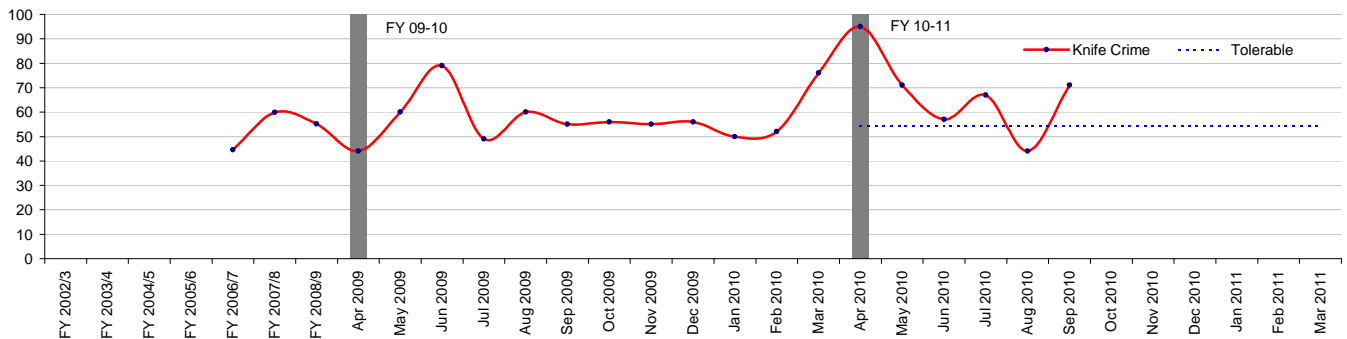
Criminal Damage Offences	
<i>Financial Year to Date Compared to Same Period in last Financial Year</i>	
<b>Current Offences FYTD:</b>	-13% Down
<b>Current SD Rate FYTD:</b>	12% (Up from 11%)
<b>Monthly Average:</b>	286.7
<b>Target Offences (Monthly):</b>	299.9
<b>SD Target</b>	0%

Gun Crime



Gun Crime	
<i>Financial Year to Date Compared to Same Period in last Financial Year</i>	
<b>Current Offences FYTD:</b>	-12% Down
<b>Current SD Rate FYTD:</b>	25% (Up from 17%)
<b>Monthly Average:</b>	18
<b>Target Offences (Monthly):</b>	22.1
<b>SD Target</b>	0%

Knife Crime



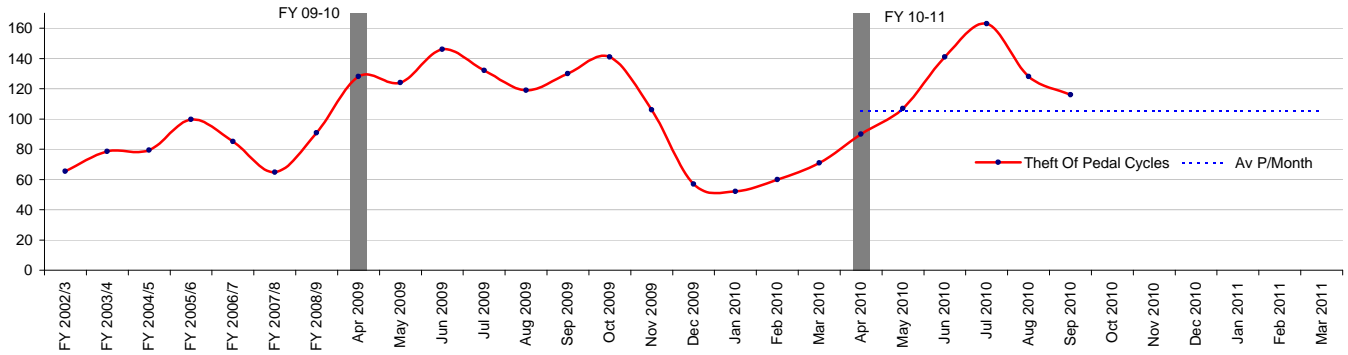
Knife Crime	
<i>Financial Year to Date Compared to Same Period in last Financial Year</i>	
<b>Current Offences FYTD:</b>	17% Up
<b>Current SD Rate FYTD:</b>	20% (Up from 19%)
<b>Monthly Average:</b>	67.5
<b>Target Offences (Monthly):</b>	54.2
<b>SD Target</b>	0%

Theft Of Pedal Cycles



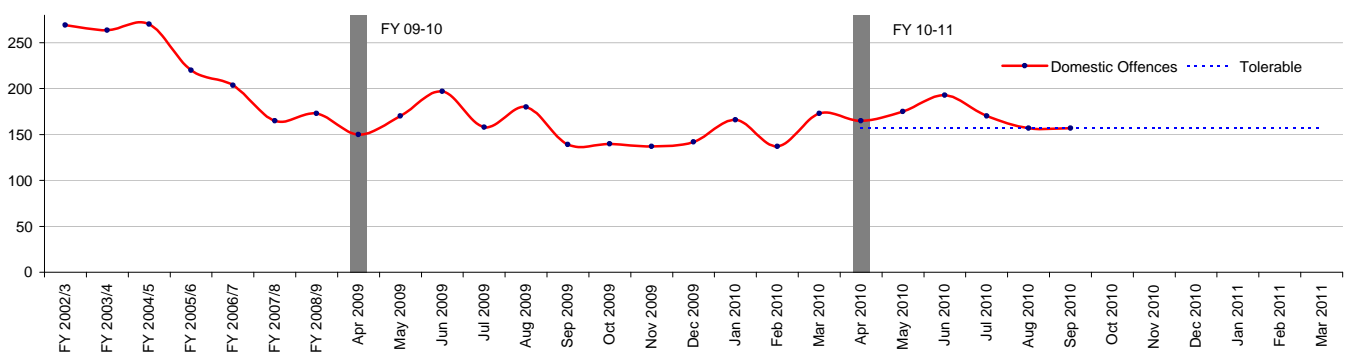
## Community Police Consultative Group for Lambeth-Monthly Report

Theft Of Pedal Cycles



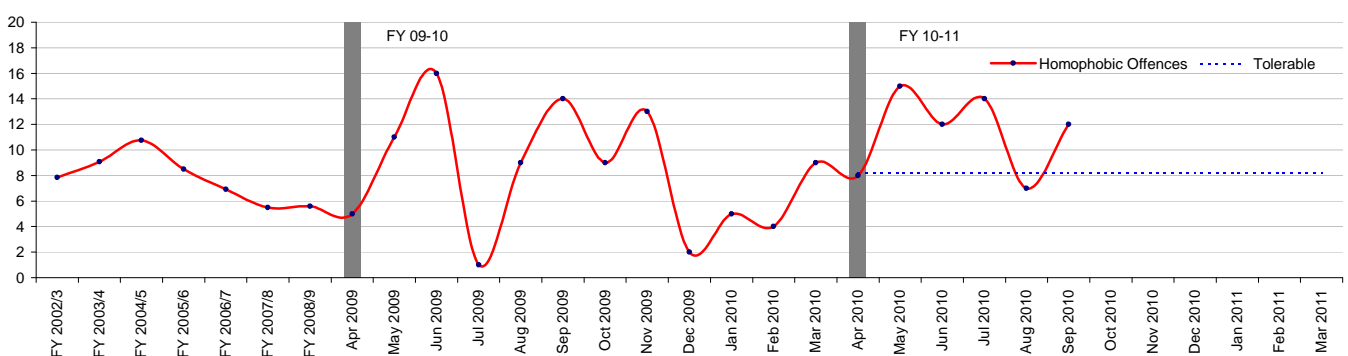
Theft Of Pedal Cycles	
<i>Financial Year to Date Compared to Same Period in last Financial Year</i>	
<b>Current Offences FYTD:</b>	-4% Down
<b>Current SD Rate FYTD:</b>	2% (Down from 2%)
<b>Monthly Average:</b>	124.2
<b>Target Offences (Monthly):</b>	105.5
<b>SD Target</b>	0%

Domestic Offences



Domestic Offences	
<i>Financial Year to Date Compared to Same Period in last Financial Year</i>	
<b>Current Offences FYTD:</b>	2% Up
<b>Current SD Rate FYTD:</b>	46% (Up from 45%)
<b>Monthly Average:</b>	169.5
<b>Target Offences (Monthly):</b>	157.4
<b>SD Target</b>	45%

Homophobic Offences

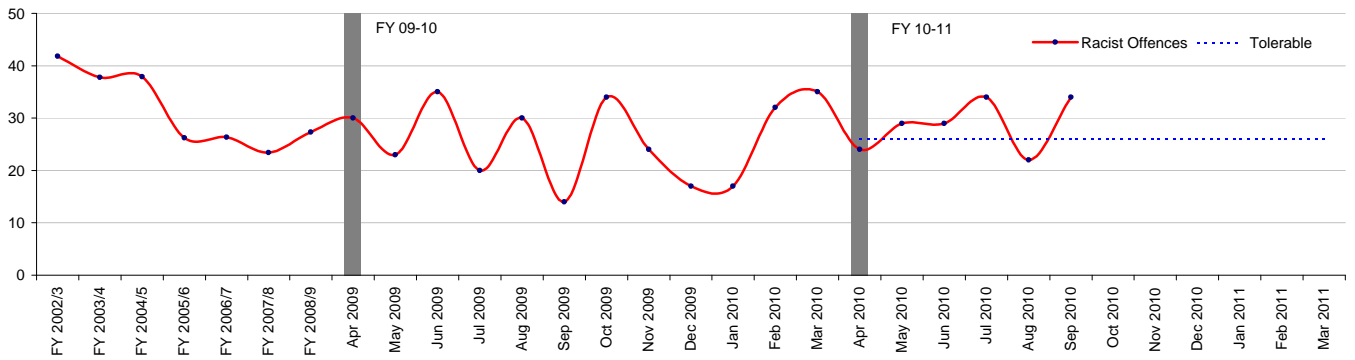


Homophobic Offences	
<i>Financial Year to Date Compared to Same Period in last Financial Year</i>	
<b>Current Offences FYTD:</b>	21% Up
<b>Current SD Rate FYTD:</b>	46% (Down from 50%)
<b>Monthly Average:</b>	11.3
<b>Target Offences (Monthly):</b>	8.2
<b>SD Target</b>	44%

Racist Offences

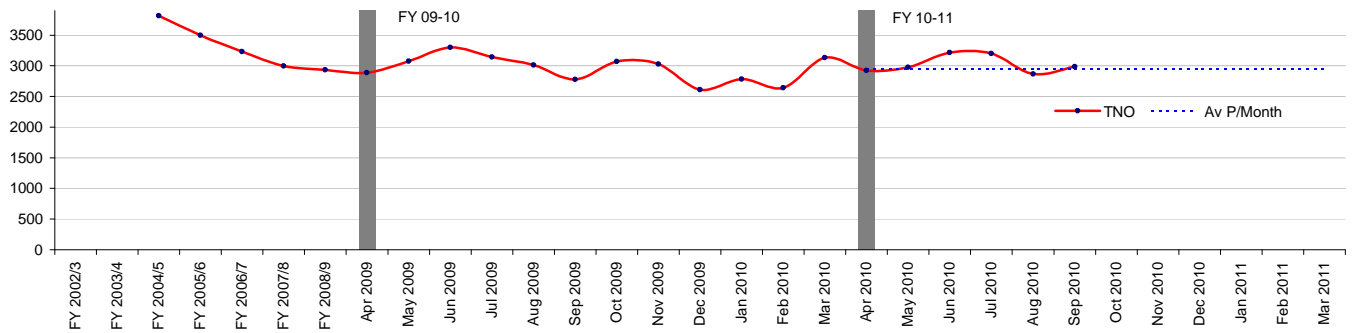
## Community Police Consultative Group for Lambeth-Monthly Report

Racist Offences



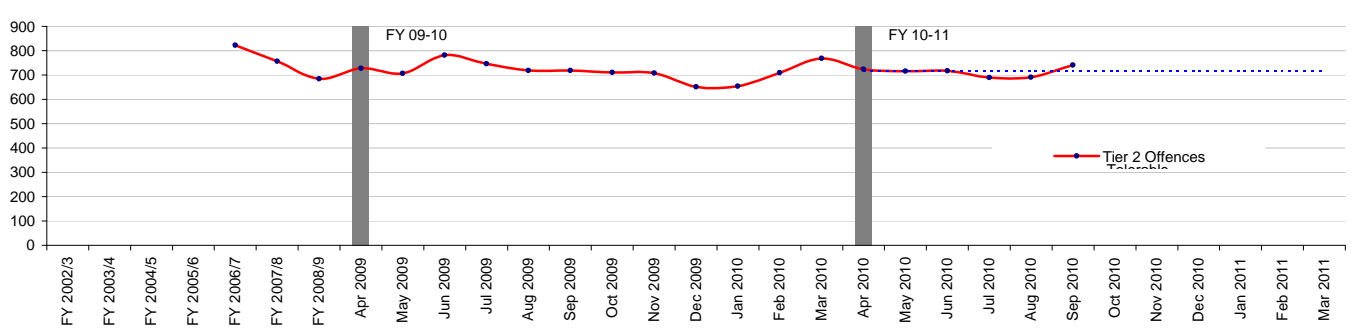
Racist Offences	
<i>Financial Year to Date Compared to Same Period in last Financial Year</i>	
<b>Current Offences FYTD:</b>	13% Up
<b>Current SD Rate FYTD:</b>	47% (Down from 64%)
<b>Monthly Average:</b>	28.7
<b>Target Offences (Monthly):</b>	25.9
<b>SD Target</b>	50%

TNO



TNO	
<i>Financial Year to Date Compared to Same Period in last Financial Year</i>	
<b>Current Offences FYTD:</b>	0% Down
<b>Current SD Rate FYTD:</b>	20% (Down from 24%)
<b>Monthly Average:</b>	3028
<b>Target Offences (Monthly):</b>	2955
<b>SD Target</b>	0%

Tier 2 Offences

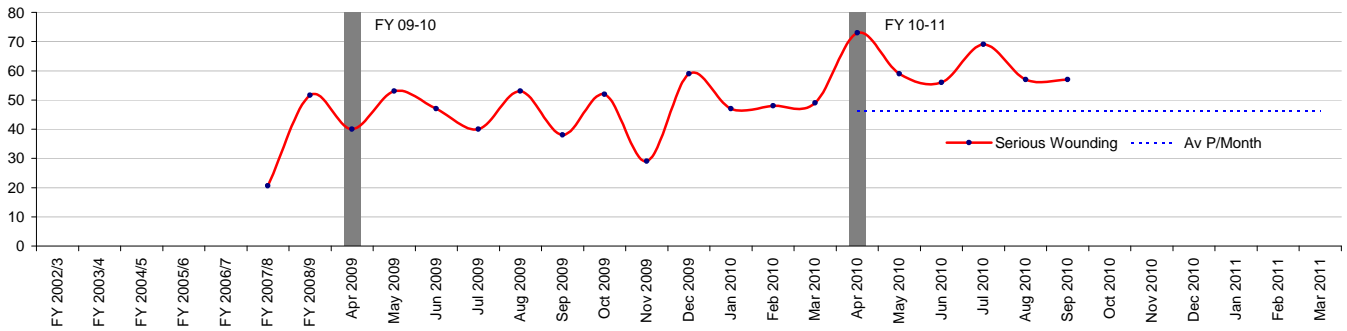


Tier 2 Offences	
<i>Financial Year to Date Compared to Same Period in last Financial Year</i>	
<b>Current Offences FYTD:</b>	-3% Down
<b>Current SD Rate FYTD:</b>	8% (Down from 10%)
<b>Monthly Average:</b>	713
<b>Target Offences (Monthly):</b>	717
<b>SD Target</b>	13%

Serious Wounding

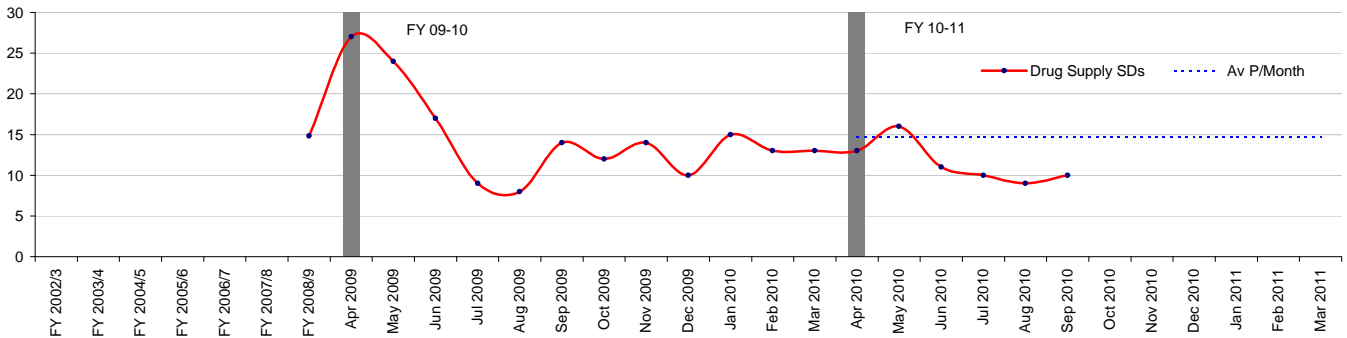
## Community Police Consultative Group for Lambeth-Monthly Report

Serious Wounding



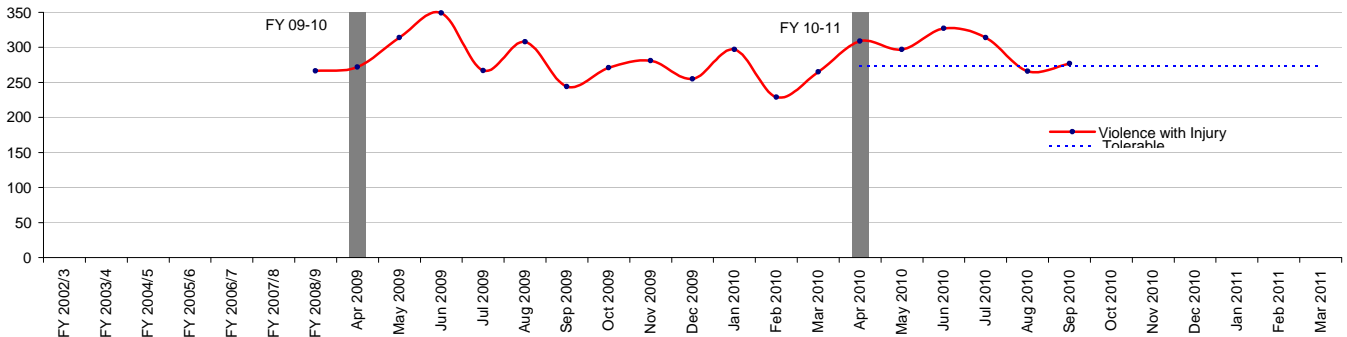
Serious Wounding	
Financial Year to Date Compared to Same Period in last Financial Year	
<b>Current Offences FYTD:</b>	37% Up
<b>Current SD Rate FYTD:</b>	35% (Up from 32%)
<b>Monthly Average:</b>	61.8
<b>Target Offences (Monthly):</b>	46.3
<b>SD Target</b>	0%

Drug Supply SDs



Drug Supply SDs	
Financial Year to Date Compared to Same Period in last Financial Year	
<b>Current Offences FYTD:</b>	-30% Down
<b>Current SD Rate FYTD:</b>	0% ( from 0%)
<b>Monthly Average:</b>	11.5
<b>Target Offences (Monthly):</b>	14.7
<b>SD Target</b>	0%

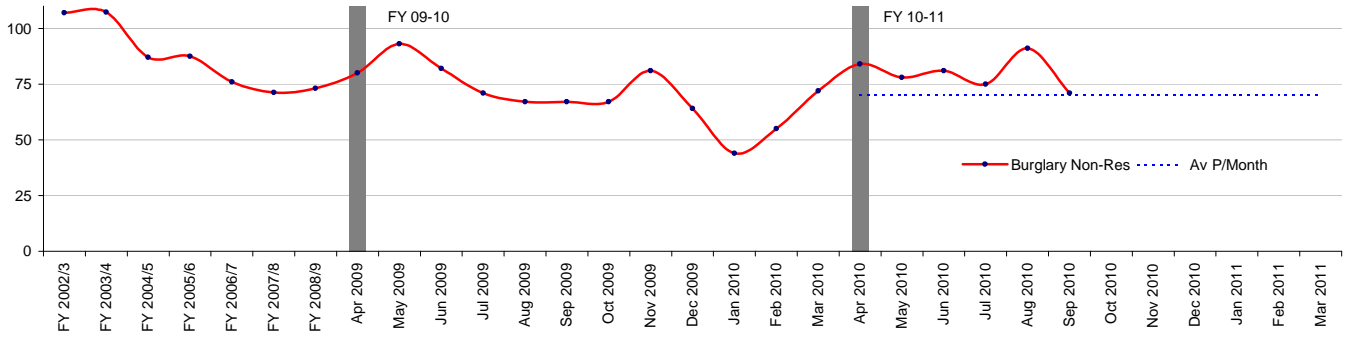
Violence with Injury



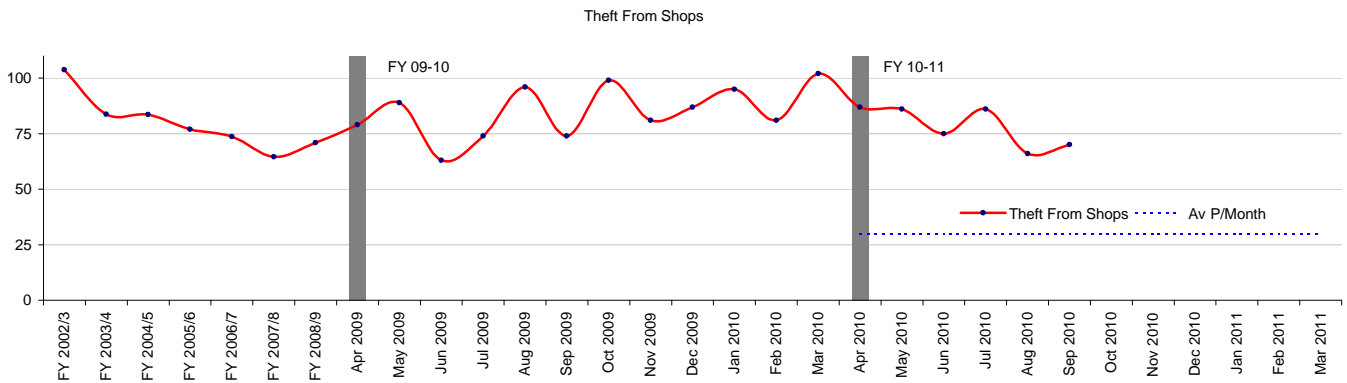
Violence with Injury	
Financial Year to Date Compared to Same Period in last Financial Year	
<b>Current Offences FYTD:</b>	2% Up
<b>Current SD Rate FYTD:</b>	30% (Up from 28%)
<b>Monthly Average:</b>	298
<b>Target Offences (Monthly):</b>	273.7
<b>SD Target</b>	35%

## Community Police Consultative Group for Lambeth-Monthly Report

Burglary Non-Res



<b>Burglary Non-Res</b>	
<i>Financial Year to Date Compared to Same Period in last Financial Year</i>	
<b>Current Offences FYTD:</b>	4% Up
<b>Current SD Rate FYTD:</b>	8% (Down from 14%)
<b>Monthly Average:</b>	80
<b>Target Offences (Monthly):</b>	70.3
<b>SD Target</b>	0%

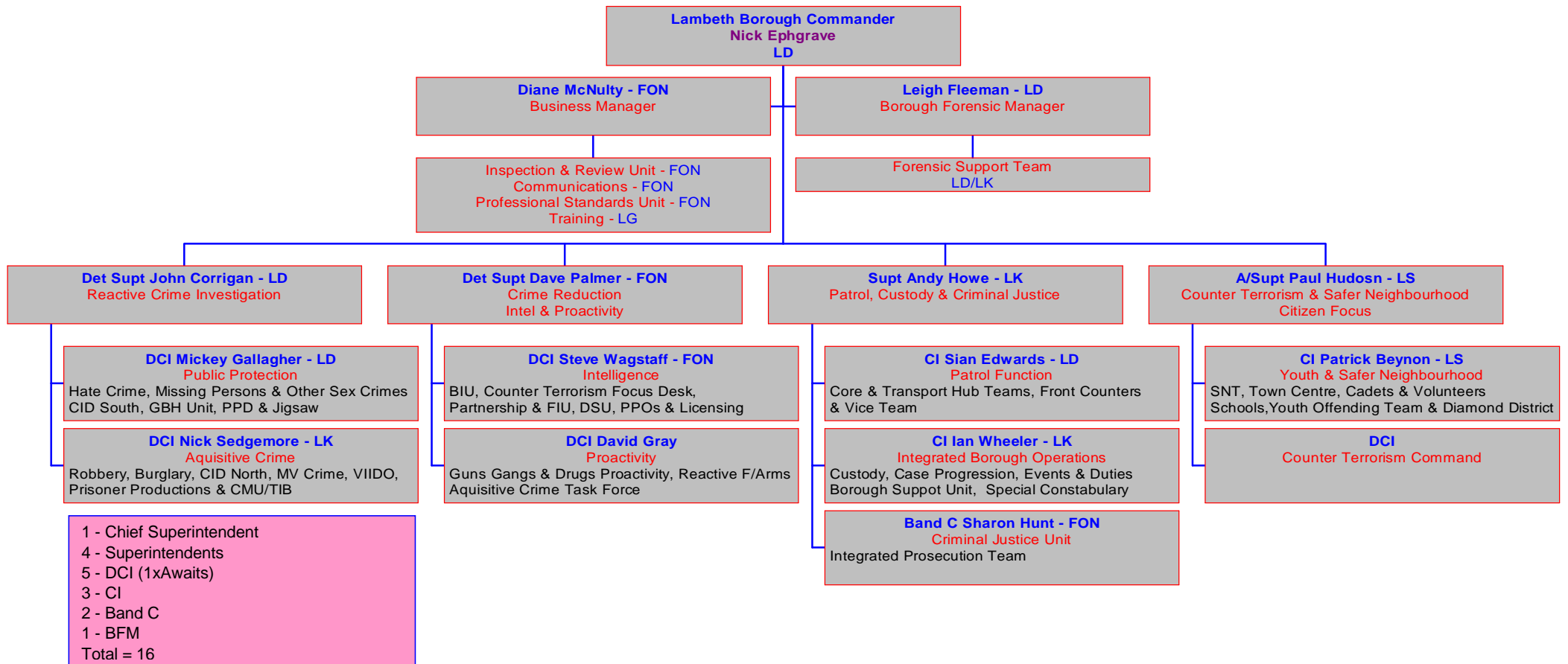


<b>Theft From Shops</b>	
<i>Financial Year to Date Compared to Same Period in last Financial Year</i>	
<b>Current Offences FYTD:</b>	-1% Down
<b>Current SD Rate FYTD:</b>	44% (Down from 47%)
<b>Monthly Average:</b>	78.3
<b>Target Offences (Monthly):</b>	85.0
<b>SD Target</b>	0%

<b>Financial Year To Date Crime Performance</b>				
---	--	--	--	--

<b>LINK</b>	FY 2010 to Aug (ytd)	FY 2009 to Aug (ytd)	Difference	% Change
Total Crimes	18,169	18,198	-29	<b>-0.2%</b>
Homicide	5	4	1	<b>25.0%</b>
Violence Against the Person (Total)	4,242	4,019	223	<b>5.5%</b>
Rape	98	92	6	<b>6.5%</b>
Other Sexual	200	169	31	<b>18.3%</b>
Robbery (Total)	1345	1185	160	<b>13.5%</b>
Robbery (Person)	1242	1080	162	<b>15.0%</b>
Robbery (Business)	103	105	-2	<b>-1.9%</b>
Burglary (Total)	1,661	1,993	-332	<b>-16.7%</b>
Burglary Residential	1,181	1533	-352	<b>-23.0%</b>
Burglary Non- Residential	480	460	20	<b>4.3%</b>
Gun Enabled Crime	108	123	-15	<b>-12.2%</b>
Motor Vehicle Crime	1,753	1,680	73	<b>4.3%</b>
Domestic Crime	1017	994	23	<b>2.3%</b>
Racist Crime	172	152	20	<b>13.2%</b>
Homophobic Crime	68	56	12	<b>21.4%</b>

### Lambeth Borough Police Organisational Structure



## **Glossary**

### **'Sanctioned' Detection Definition**

A 'Sanctioned' Detection is where an allegation has resulted in either a charge, a summons, a caution, a formal warning, a youth reprimand or an offence being taken into consideration i.e. in addition to the charge for which the person is before a court, other offences can be admitted by the defendant and the court asked to take these offences into consideration in passing sentence.

### **Total Robbery**

Combination of Robbery and Commercial Robbery

### **Robbery**

Theft where force or threat of force is made to a person at the time or immediately before in order to steal

### **TNO Total Notifiable Offences**

All notifiable offences which are recorded by police and a crime report is generated

### **I-Call**

Police graded response to answer a 999 call received in the Police Control Room with 10 seconds. Response Time as per Policing Pledge for urban areas is 12 minutes (within 20 mins for rural areas). Giving an estimated time of arrival (TOA) and getting there safely and quickly as possible.

### **CAD**

Computer aided dispatch which is the computer system used within Metropolitan Police Control rooms to record incidents