

# Community Police Consultative Group for Lambeth



## Monthly Police Report

**CPCG**Lambeth

**December 2010**

**Data Set: October 2010**

(Starting from April Data)

**Financial Year 2010-2011**

The CPCG report will be produced on a Monthly basis by the Lambeth Police  
Inspection & Review Unit

**Not Protectively Marked**



INDEX

LAMBETH BOROUGH

<b>Page 1</b>	<b>CAD Achievements</b>
<b>Pages 2-27</b>	<b>Classified &amp; Confirmed Offences:</b> Robbery Offences Serious Youth Violence Theft Person Theft of MV Theft From MV Other Serious Sexual Rape Offences Possession Of Drugs Murder Most Serious Violence Assault with Injury Burglary Res Criminal Damage Offences Gun Crime Knife Crime Theft Of Pedal Cycles Domestic Offences Homophobic Offences Racist Offences TNO Tier 2 Offences Serious Wounding Drug Supply Violence with Injury Burglary Non-Res Theft from Shops
<b>Pages 28-36</b>	<b>Charts of Above Offences</b>
<b>Page 37</b>	<b>MPS Performance FYTD</b>
<b>Page 38</b>	<b>Organogram</b>
<b>Page 39</b>	<b>Glossary</b>

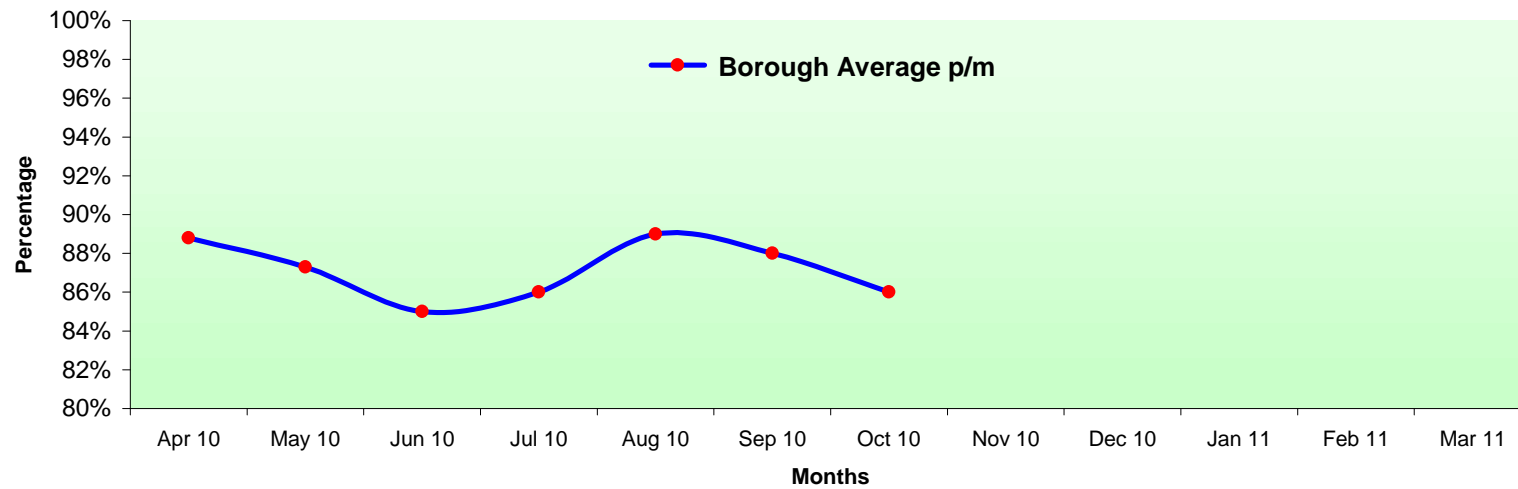
Protective Marking	Not Protectively Marked
FOIA Exemption	None
Publication Scheme	No
Title and Version	Lambeth Community and Police Consultative Group Monthly Report
Purpose	To Inform Relevant Staff and Community of Performance
Relevant To	All Staff on Lambeth BOCU and community members
Author and warrant / pay number	Trevor Peplow PC 394 LX
OCU / Branch / Unit	Lambeth Police Performance and Review Unit @ Frank O'Neill House
Summary	Report is produced on a monthly basis
Date Created	October 2010
Review Date	Monthly as Required

# CAD Achievement Trends

Call Type	Sector / Month	Apr 2010	May 2010	Jun 2010	Jul 2010	Aug 2010	Sep 2010	Oct 2010	Nov 2010	Dec 2010	Jan 2011	Feb 2011	Mar 2011
		Borough Average p/m	89%	87%	85%	86%	89%	88%	86%				
Borough Average YTD		89%	88%	87%	87%	87%	87%	87%					

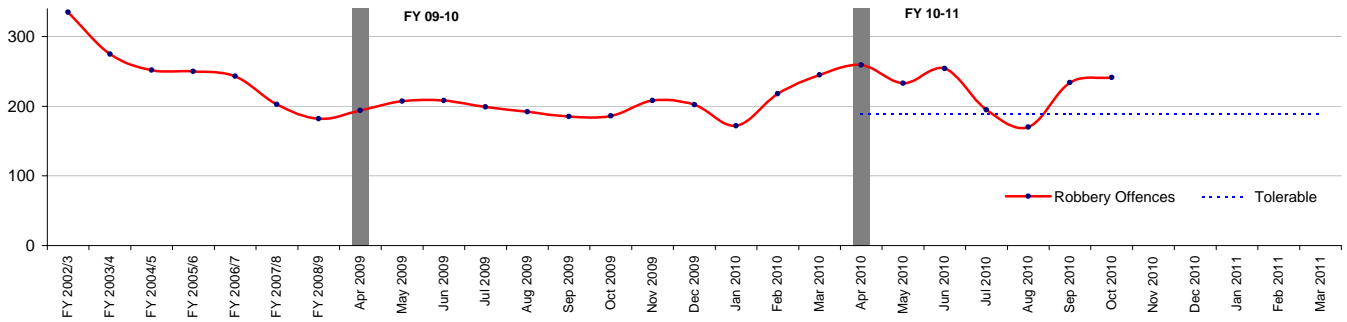
Average Response Time for Immediate Calls: 12 mins

## CAD Achievements for Lambeth Borough



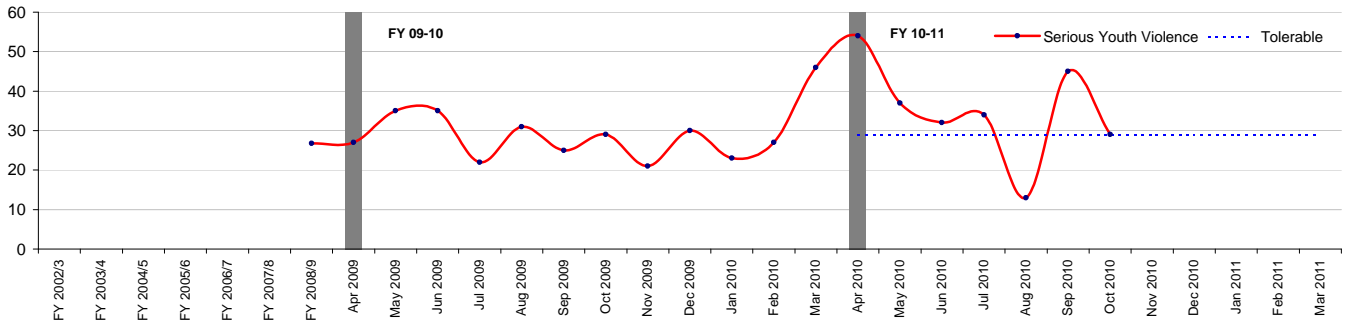
## Community Police Consultative Group for Lambeth-Monthly Report

### Robbery Offences



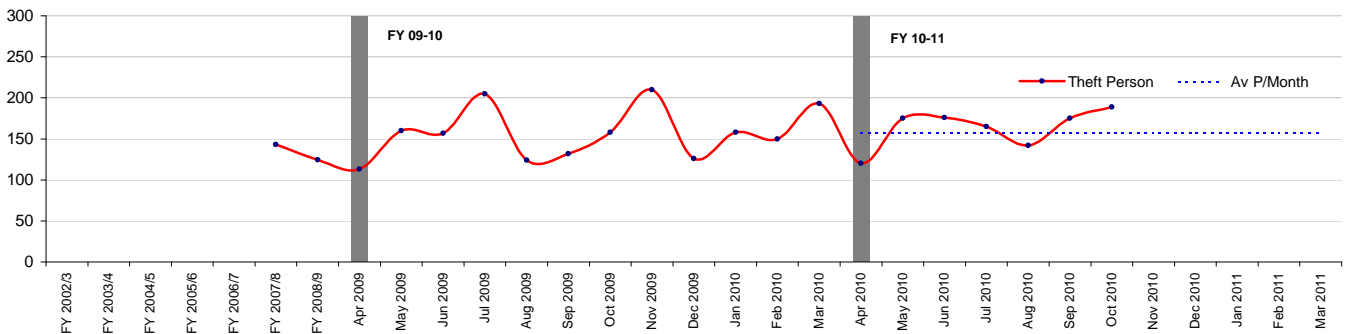
Robbery Offences	
<i>Financial Year to Date Compared to Same Period in last Financial Year</i>	
<b>Current Offences FYTD:</b>	16% Up
<b>Current SD Rate FYTD:</b>	13% (Up from 9%)
<b>Monthly Average:</b>	226.6
<b>Target Offences (Monthly):</b>	189.3
<b>SD Target</b>	19%

### Serious Youth Violence



Serious Youth Violence	
<i>Financial Year to Date Compared to Same Period in last Financial Year</i>	
<b>Current Offences FYTD:</b>	20% Up
<b>Current SD Rate FYTD:</b>	0% (Down from 0%)
<b>Monthly Average:</b>	34.85714
<b>Target Offences (Monthly):</b>	29.0
<b>SD Target</b>	0%

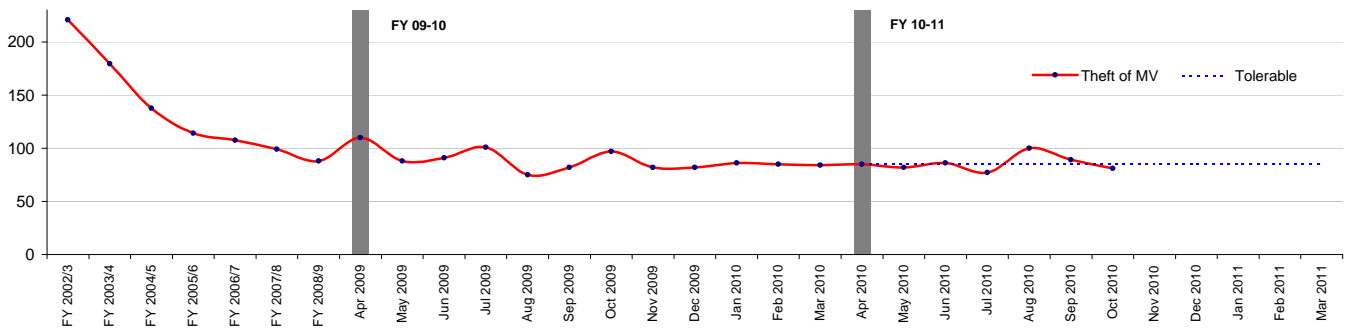
### Theft Person



Theft Person	
<i>Financial Year to Date Compared to Same Period in last Financial Year</i>	
<b>Current Offences FYTD:</b>	9% Up
<b>Current SD Rate FYTD:</b>	1% (Down from 3%)
<b>Monthly Average:</b>	163.1
<b>Target Offences (Monthly):</b>	157.2
<b>SD Target</b>	0%

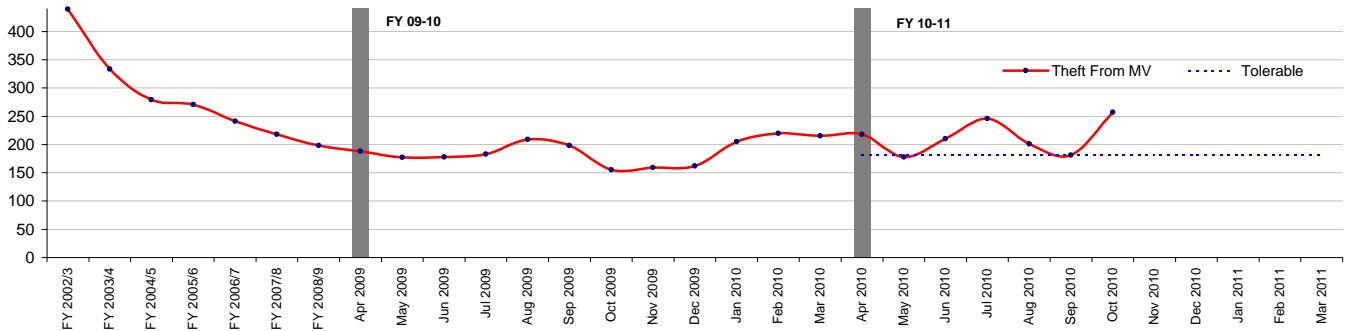
## Community Police Consultative Group for Lambeth-Monthly Report

### Theft of MV



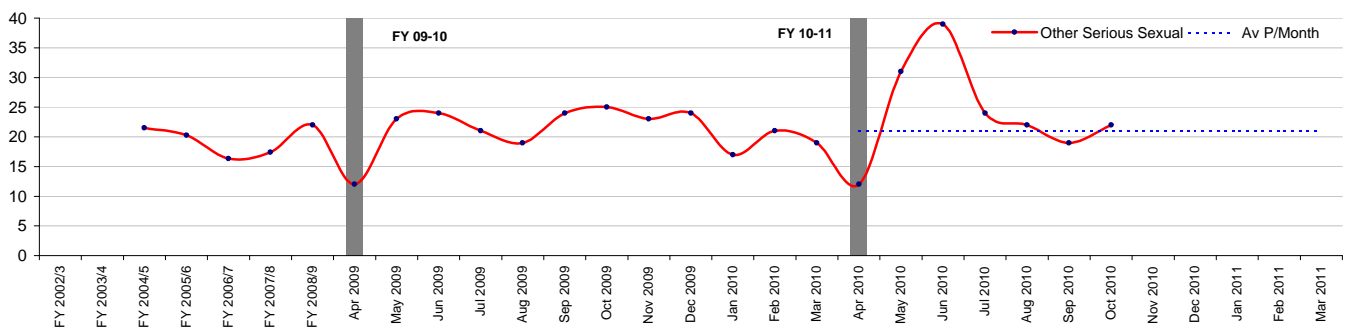
Theft of MV	
<i>Financial Year to Date Compared to Same Period in last Financial Year</i>	
<b>Current Offences FYTD:</b>	-7% Down
<b>Current SD Rate FYTD:</b>	5% (Down from 7%)
<b>Monthly Average:</b>	85.7
<b>Target Offences (Monthly):</b>	85.0
<b>SD Target</b>	8%

### Theft From MV



Theft From MV	
<i>Financial Year to Date Compared to Same Period in last Financial Year</i>	
<b>Current Offences FYTD:</b>	16% Up
<b>Current SD Rate FYTD:</b>	3% (Down from 3%)
<b>Monthly Average:</b>	213
<b>Target Offences (Monthly):</b>	180.7
<b>SD Target</b>	8%

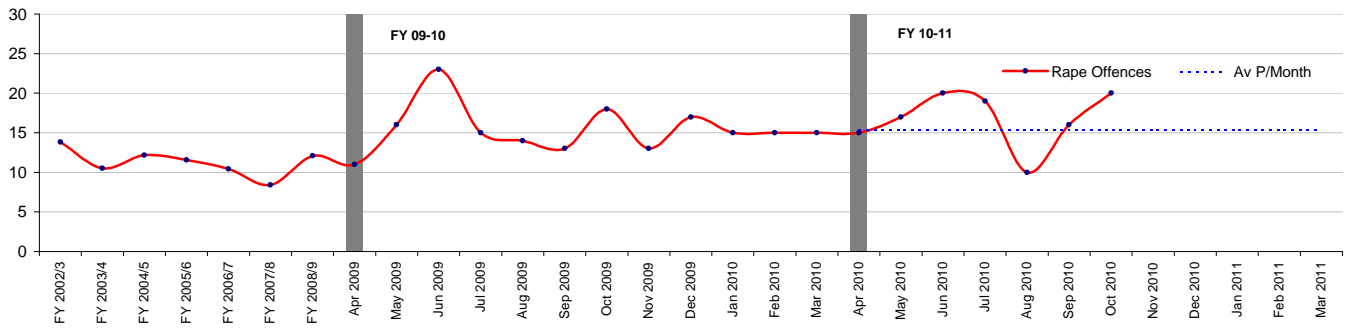
### Other Serious Sexual



Other Serious Sexual	
<i>Financial Year to Date Compared to Same Period in last Financial Year</i>	
<b>Current Offences FYTD:</b>	14% Up
<b>Current SD Rate FYTD:</b>	25% (Up from 15%)
<b>Monthly Average:</b>	24.1
<b>Target Offences (Monthly):</b>	21.0
<b>SD Target</b>	0%

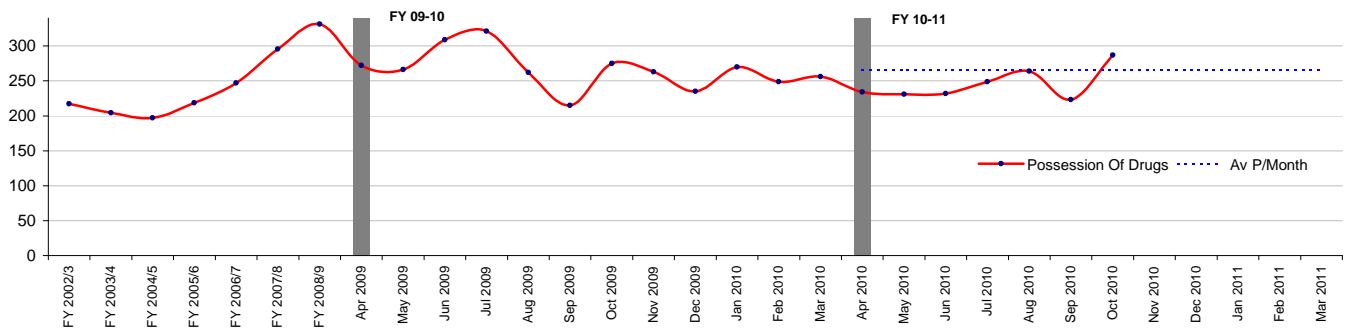
## Community Police Consultative Group for Lambeth-Monthly Report

### Rape Offences



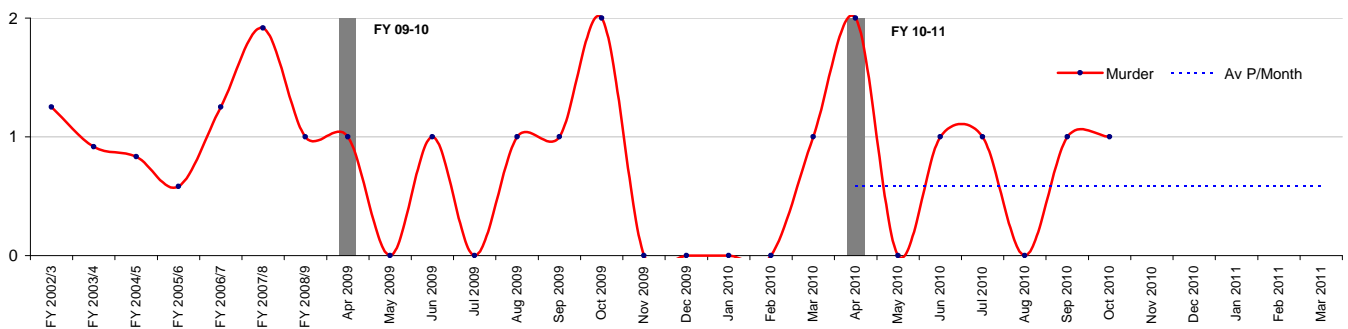
Rape Offences	
<i>Financial Year to Date Compared to Same Period in last Financial Year</i>	
<b>Current Offences FYTD:</b>	6% Up
<b>Current SD Rate FYTD:</b>	16% (Down from 25%)
<b>Monthly Average:</b>	16.7
<b>Target Offences (Monthly):</b>	15.4
<b>SD Target</b>	35%

### Possession Of Drugs



Possession Of Drugs	
<i>Financial Year to Date Compared to Same Period in last Financial Year</i>	
<b>Current Offences FYTD:</b>	-10% Down
<b>Current SD Rate FYTD:</b>	82% (Down from 85%)
<b>Monthly Average:</b>	245.7143
<b>Target Offences (Monthly):</b>	266.1
<b>SD Target</b>	0%

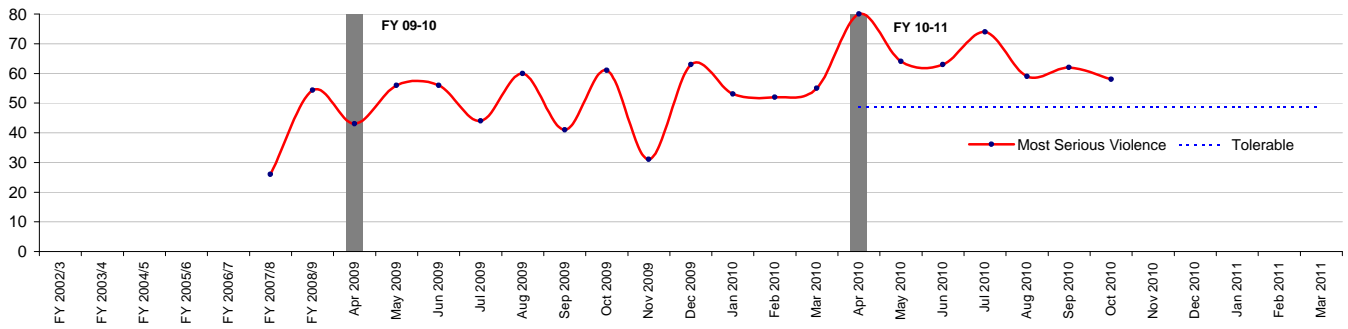
### Murder



Murder	
<i>Financial Year to Date Compared to Same Period in last Financial Year</i>	
<b>Current Offences FYTD:</b>	0% Down
<b>Current SD Rate FYTD:</b>	133% (Up from 50%)
<b>Monthly Average:</b>	0.9
<b>Target Offences (Monthly):</b>	0.6
<b>SD Target</b>	0%

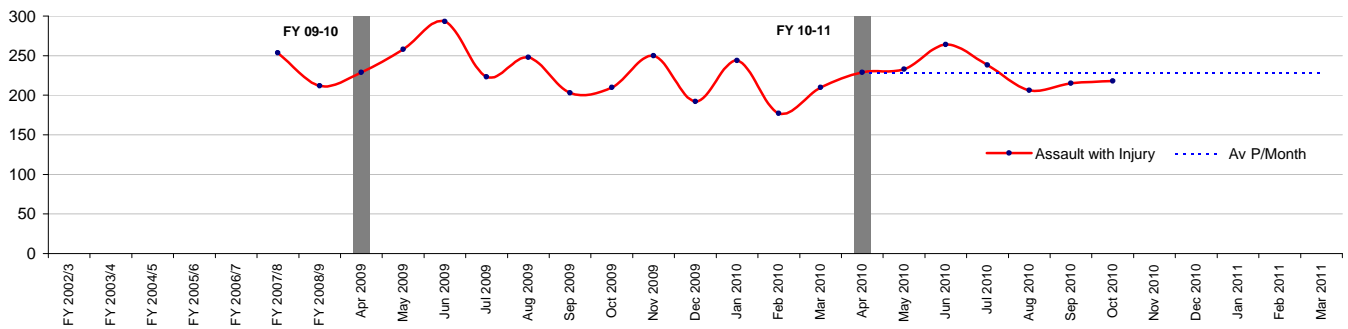
## Community Police Consultative Group for Lambeth-Monthly Report

### Most Serious Violence



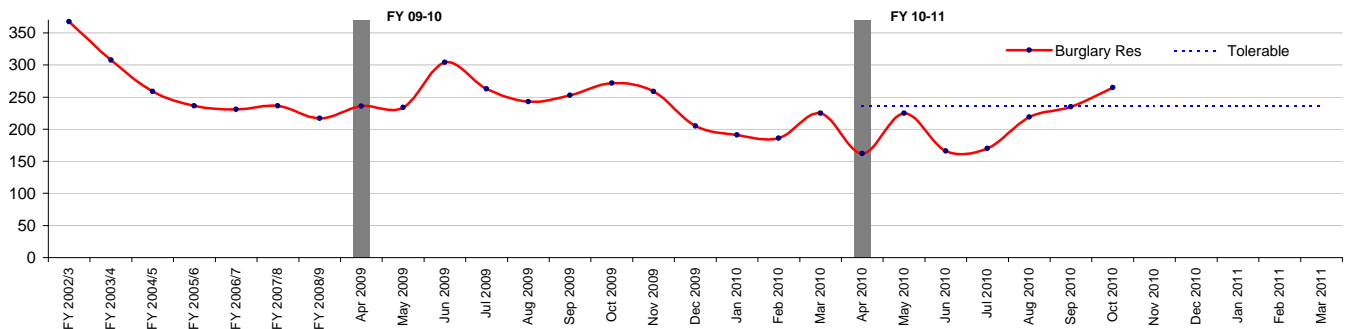
Most Serious Violence	
<i>Financial Year to Date Compared to Same Period in last Financial Year</i>	
<b>Current Offences FYTD:</b>	27% Up
<b>Current SD Rate FYTD:</b>	37% (Up from 34%)
<b>Monthly Average:</b>	65.7
<b>Target Offences (Monthly):</b>	48.7
<b>SD Target</b>	32%

### Assault with Injury



Assault with Injury	
<i>Financial Year to Date Compared to Same Period in last Financial Year</i>	
<b>Current Offences FYTD:</b>	-4% Down
<b>Current SD Rate FYTD:</b>	28% (Up from 26%)
<b>Monthly Average:</b>	229.0
<b>Target Offences (Monthly):</b>	228.1
<b>SD Target</b>	0%

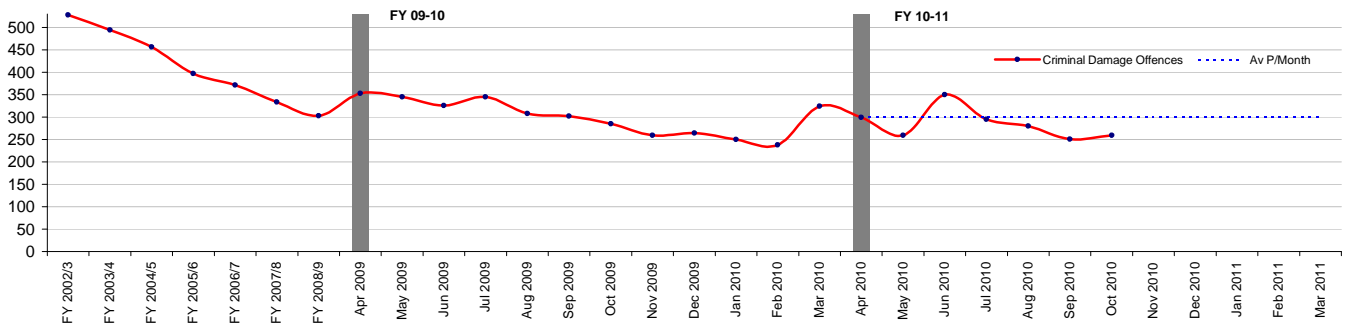
### Burglary Res



Burglary Res	
<i>Financial Year to Date Compared to Same Period in last Financial Year</i>	
<b>Current Offences FYTD:</b>	-20% Down
<b>Current SD Rate FYTD:</b>	15% (Down from 16%)
<b>Monthly Average:</b>	206.0
<b>Target Offences (Monthly):</b>	236.9
<b>SD Target</b>	16%

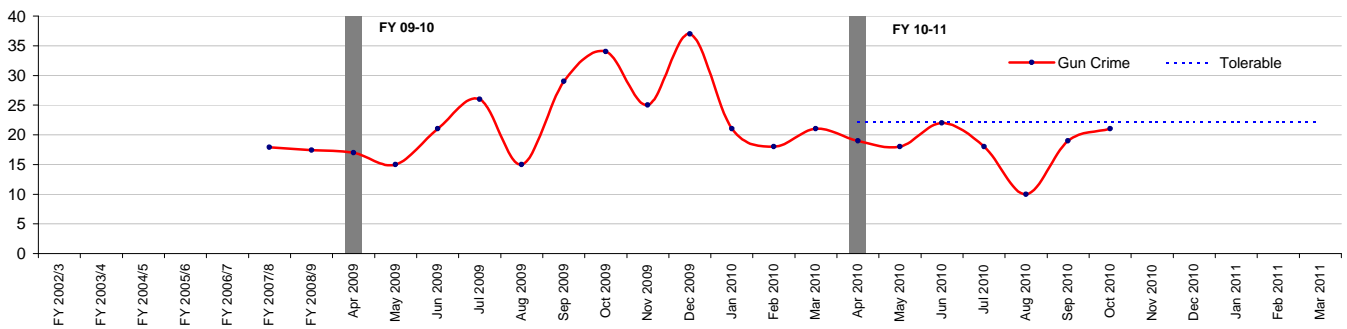
## Community Police Consultative Group for Lambeth-Monthly Report

### Criminal Damage Offences



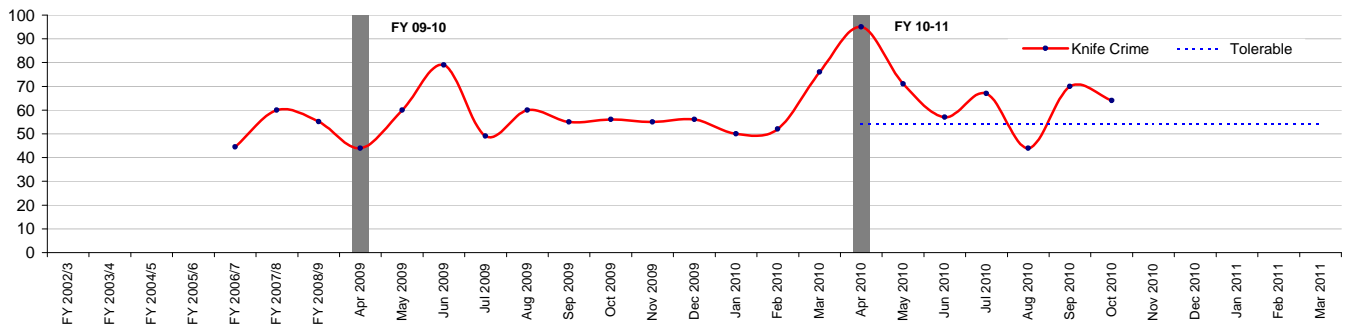
Criminal Damage Offences	
Financial Year to Date Compared to Same Period in last Financial Year	
Current Offences FYTD:	-12% Down
Current SD Rate FYTD:	12% (Up from 11%)
Monthly Average:	284.7
Target Offences (Monthly):	299.9
SD Target	0%

### Gun Crime



Gun Crime	
Financial Year to Date Compared to Same Period in last Financial Year	
Current Offences FYTD:	-19% Down
Current SD Rate FYTD:	25% (Up from 17%)
Monthly Average:	18.14286
Target Offences (Monthly):	22.1
SD Target	0%

### Knife Crime

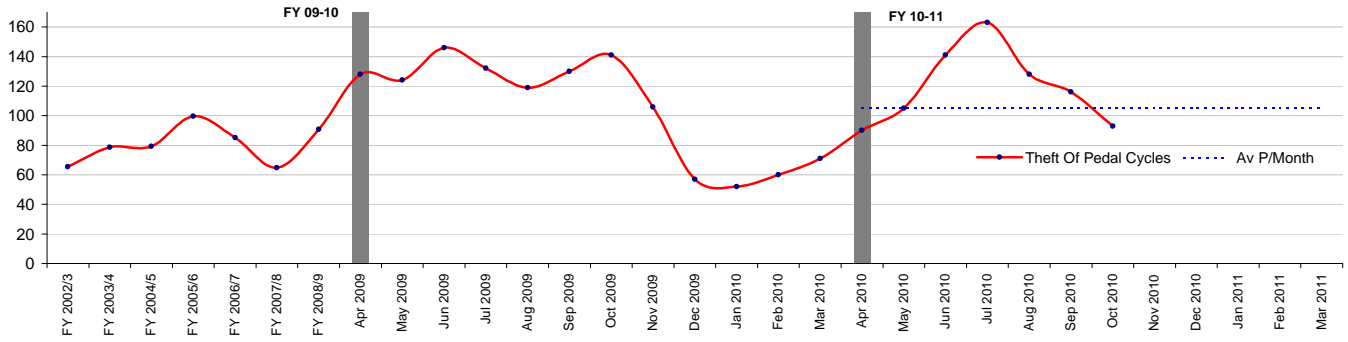


Knife Crime	
Financial Year to Date Compared to Same Period in last Financial Year	
Current Offences FYTD:	16% Up
Current SD Rate FYTD:	19% (Up from 18%)
Monthly Average:	66.85714
Target Offences (Monthly):	54.2
SD Target	0%



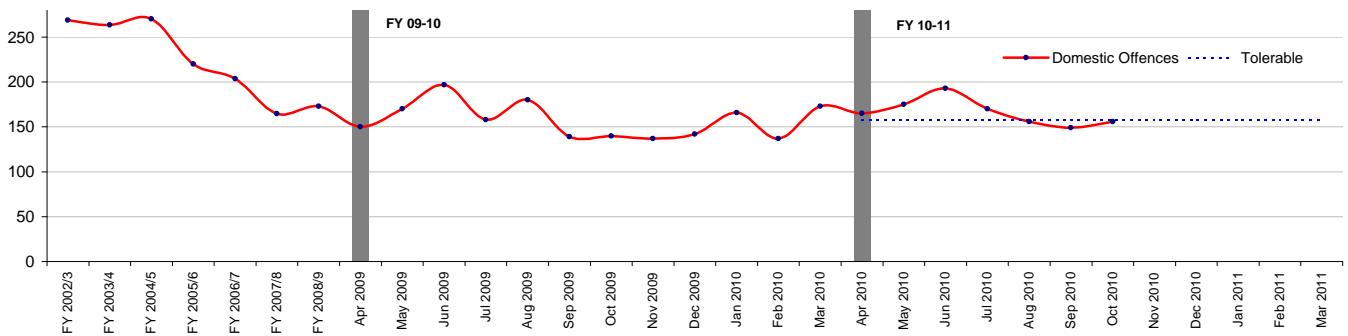
## Community Police Consultative Group for Lambeth-Monthly Report

### Theft Of Pedal Cycles



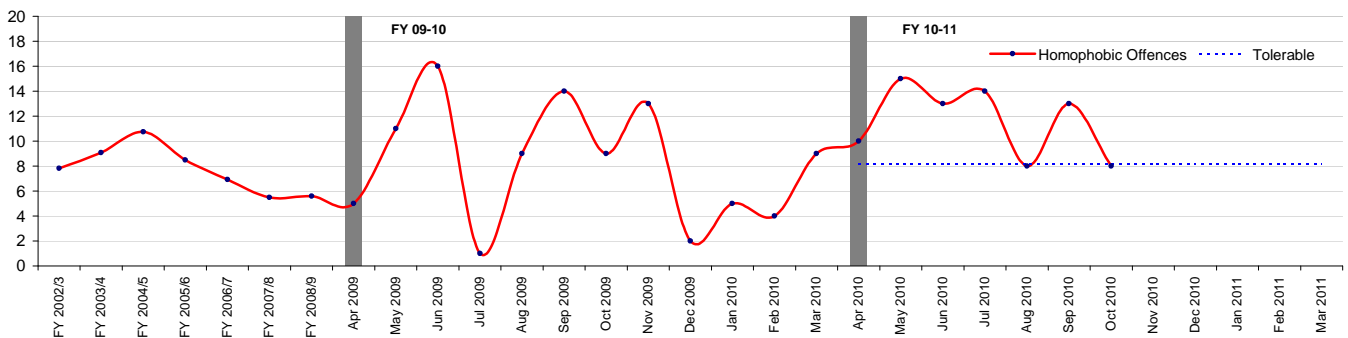
Theft Of Pedal Cycles	
Financial Year to Date Compared to Same Period in last Financial Year	
<b>Current Offences FYTD:</b>	-9% Down
<b>Current SD Rate FYTD:</b>	2% (Down from 2%)
<b>Monthly Average:</b>	119.4
<b>Target Offences (Monthly):</b>	105.5
<b>SD Target</b>	0%

### Domestic Offences



Domestic Offences	
Financial Year to Date Compared to Same Period in last Financial Year	
<b>Current Offences FYTD:</b>	3% Up
<b>Current SD Rate FYTD:</b>	46% (Up from 44%)
<b>Monthly Average:</b>	166.2857
<b>Target Offences (Monthly):</b>	157.4
<b>SD Target</b>	45%

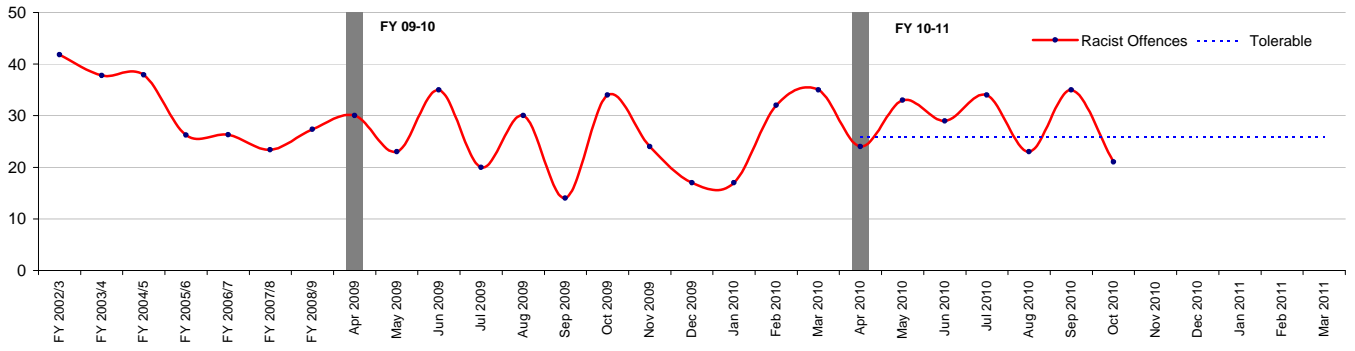
### Homophobic Offences



Homophobic Offences	
Financial Year to Date Compared to Same Period in last Financial Year	
<b>Current Offences FYTD:</b>	25% Up
<b>Current SD Rate FYTD:</b>	44% (Down from 52%)
<b>Monthly Average:</b>	11.6
<b>Target Offences (Monthly):</b>	8.2
<b>SD Target</b>	44%

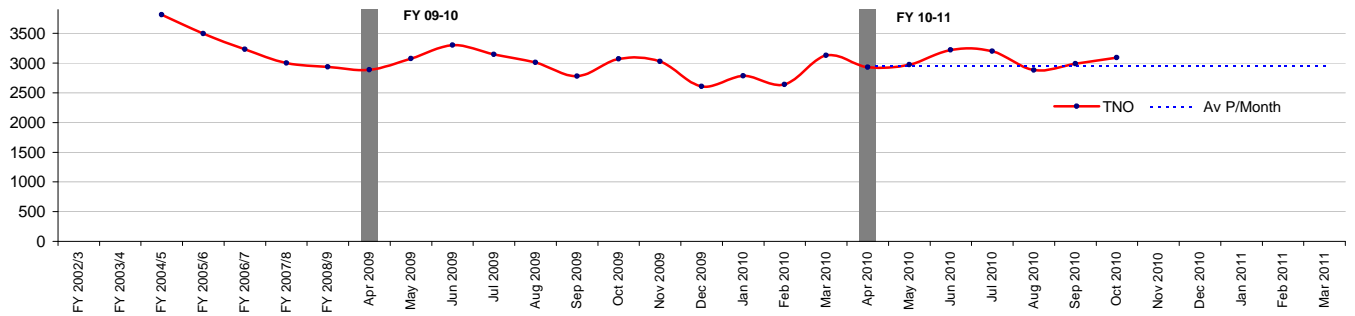
## Community Police Consultative Group for Lambeth-Monthly Report

### Racist Offences



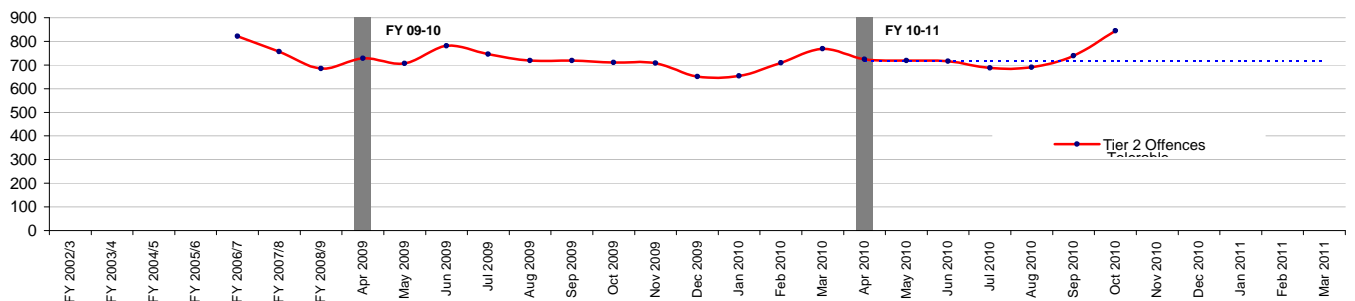
Racist Offences	
<i>Financial Year to Date Compared to Same Period in last Financial Year</i>	
<b>Current Offences FYTD:</b>	7% Up
<b>Current SD Rate FYTD:</b>	48% (Down from 57%)
<b>Monthly Average:</b>	28.4
<b>Target Offences (Monthly):</b>	25.9
<b>SD Target</b>	50%

### TNO



TNO	
<i>Financial Year to Date Compared to Same Period in last Financial Year</i>	
<b>Current Offences FYTD:</b>	0% Up
<b>Current SD Rate FYTD:</b>	21% (Down from 23%)
<b>Monthly Average:</b>	3041
<b>Target Offences (Monthly):</b>	2955
<b>SD Target</b>	0%

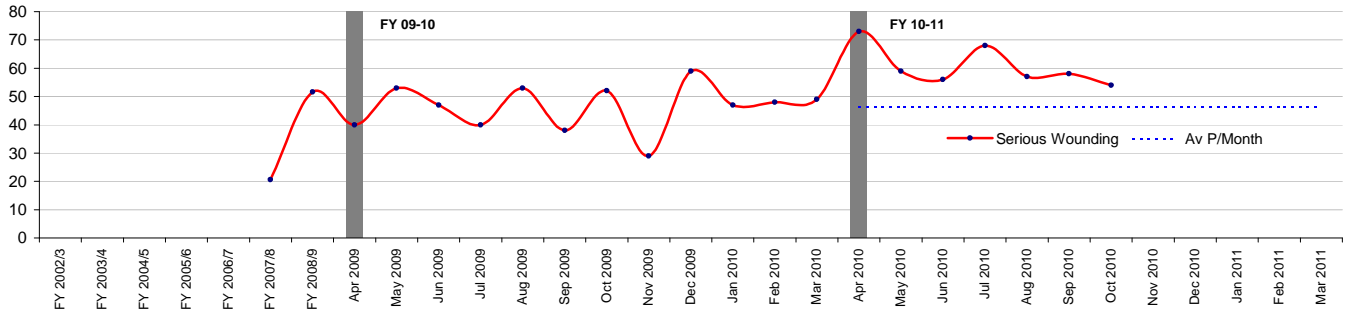
### Tier 2 Offences



Tier 2 Offences	
<i>Financial Year to Date Compared to Same Period in last Financial Year</i>	
<b>Current Offences FYTD:</b>	0% Up
<b>Current SD Rate FYTD:</b>	10% (Down from 10%)
<b>Monthly Average:</b>	731
<b>Target Offences (Monthly):</b>	717
<b>SD Target</b>	13%

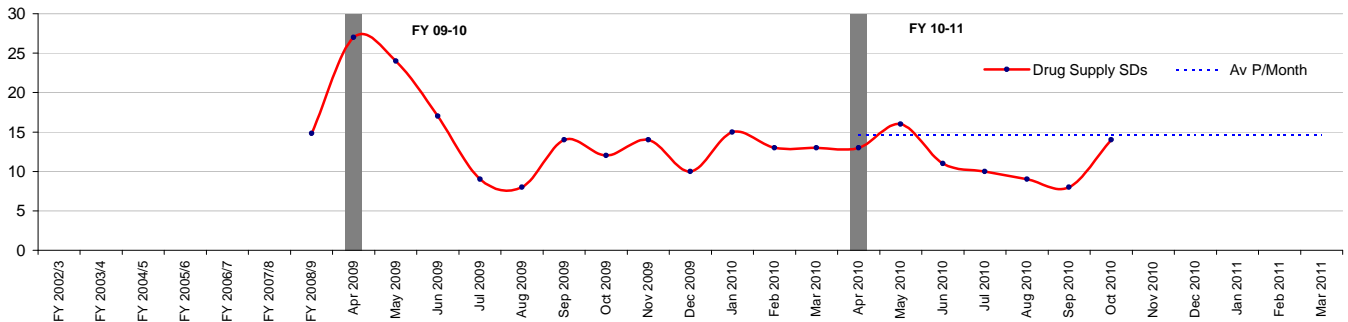
## Community Police Consultative Group for Lambeth-Monthly Report

### Serious Wounding



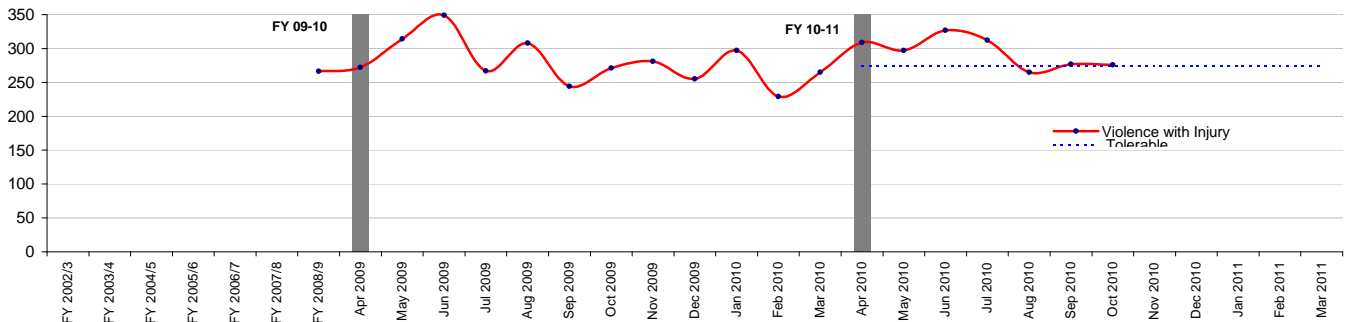
Serious Wounding	
<i>Financial Year to Date Compared to Same Period in last Financial Year</i>	
<b>Current Offences FYTD:</b>	32% Up
<b>Current SD Rate FYTD:</b>	36% (Up from 33%)
<b>Monthly Average:</b>	60.7
<b>Target Offences (Monthly):</b>	46.3
<b>SD Target</b>	0%

### Drug Supply SDs



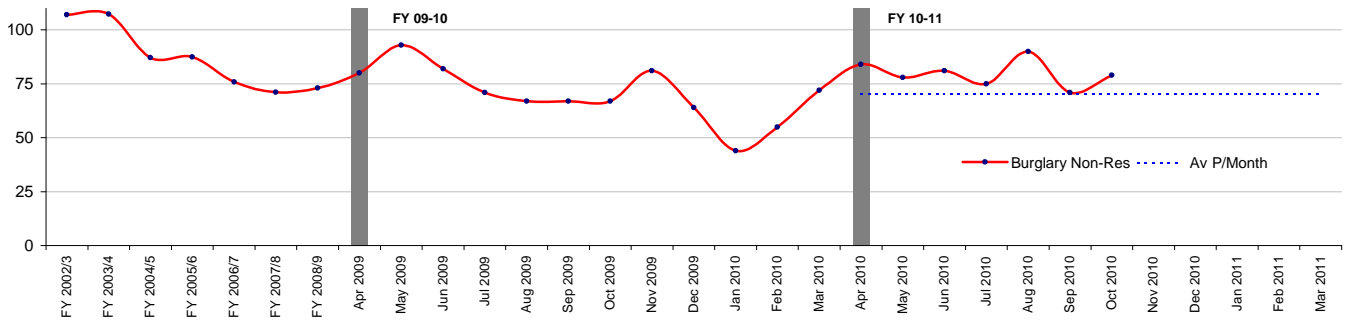
Drug Supply SDs	
<i>Financial Year to Date Compared to Same Period in last Financial Year</i>	
<b>Current Offences FYTD:</b>	-27% Down
<b>Current SD Rate FYTD:</b>	0% ( from 0%)
<b>Monthly Average:</b>	11.6
<b>Target Offences (Monthly):</b>	14.7
<b>SD Target</b>	0%

### Violence with Injury



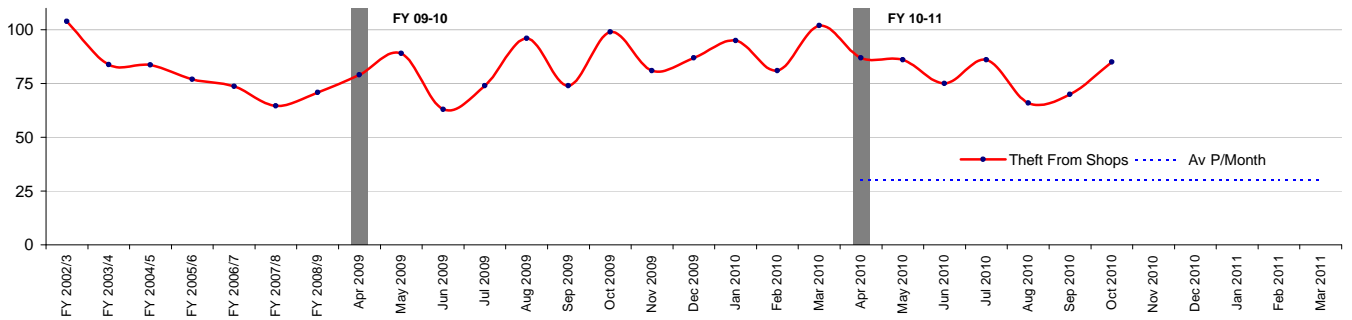
Violence with Injury	
<i>Financial Year to Date Compared to Same Period in last Financial Year</i>	
<b>Current Offences FYTD:</b>	2% Up
<b>Current SD Rate FYTD:</b>	30% (Up from 28%)
<b>Monthly Average:</b>	295
<b>Target Offences (Monthly):</b>	273.7
<b>SD Target</b>	35%

### Community Police Consultative Group for Lambeth-Monthly Report Burglary Non-Res



Burglary Non-Res	
Financial Year to Date Compared to Same Period in last Financial Year	
<b>Current Offences FYTD:</b>	6% Up
<b>Current SD Rate FYTD:</b>	8% (Down from 13%)
<b>Monthly Average:</b>	79.71429
<b>Target Offences (Monthly):</b>	70.3
<b>SD Target</b>	0%

### Theft From Shops

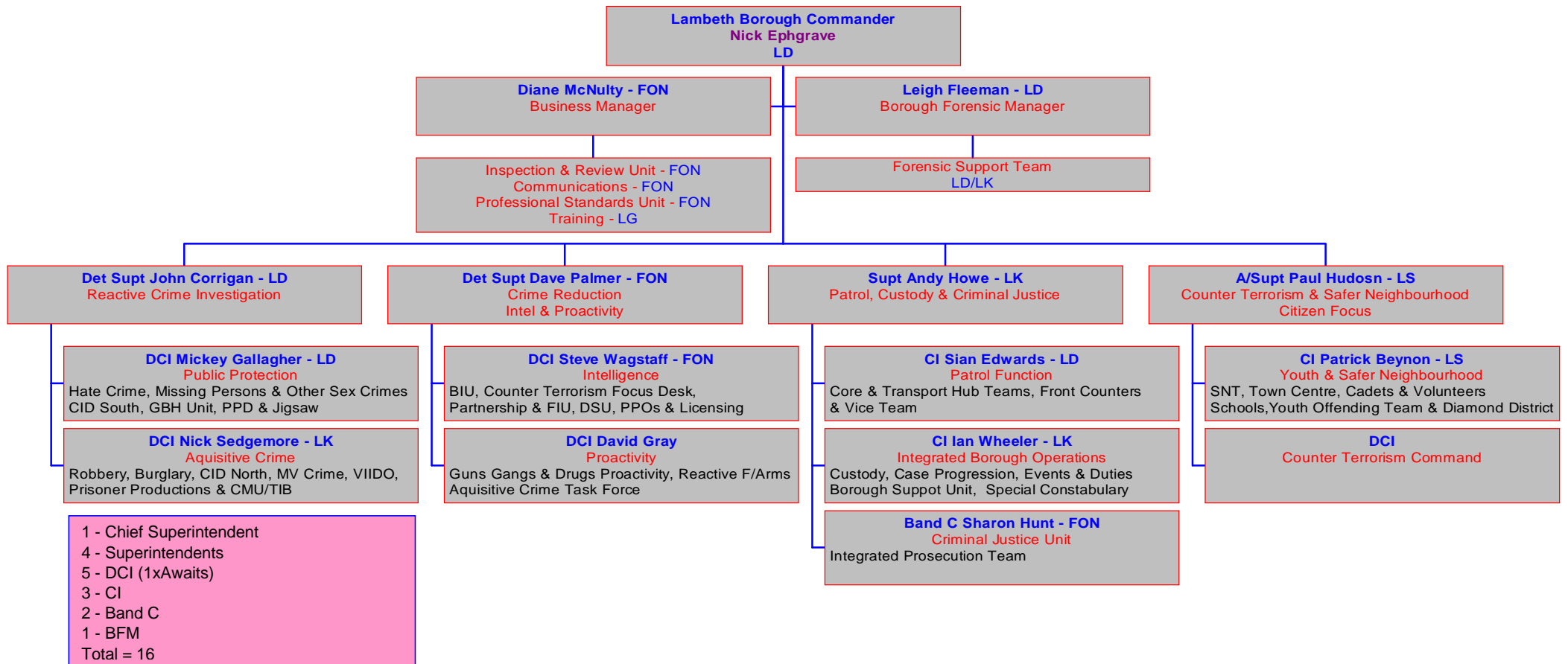


Theft From Shops	
Financial Year to Date Compared to Same Period in last Financial Year	
<b>Current Offences FYTD:</b>	-3% Down
<b>Current SD Rate FYTD:</b>	46% (Down from 47%)
<b>Monthly Average:</b>	79.3
<b>Target Offences (Monthly):</b>	85.0
<b>SD Target</b>	0%

<b>Financial Year To Date Crime Performance</b>				
---	--	--	--	--

<b>LINK</b>	FY 2010 to Oct (ytd)	FY 2009 to Oct (ytd)	Difference	% Change
Total Crimes	21,287	21,269	18	<b>0.1%</b>
Homicide	6	6	0	<b>0.0%</b>
Violence Against the Person (Total)	4,873	4,685	188	<b>4.0%</b>
Rape	117	110	7	<b>6.4%</b>
Other Sexual	227	220	7	<b>3.2%</b>
Robbery (Total)	1586	1371	215	<b>15.7%</b>
Robbery (Person)	1469	1245	224	<b>18.0%</b>
Robbery (Business)	117	126	-9	<b>-7.1%</b>
Burglary (Total)	2,000	2,332	-332	<b>-14.2%</b>
Burglary Residential	1,442	1805	-363	<b>-20.1%</b>
Burglary Non- Residential	558	527	31	<b>5.9%</b>
Gun Enabled Crime	127	157	-30	<b>-19.1%</b>
Motor Vehicle Crime	2,091	1,932	159	<b>8.2%</b>
Domestic Crime	1164	1134	30	<b>2.6%</b>
Racist Crime	199	186	13	<b>7.0%</b>
Homophobic Crime	81	65	16	<b>24.6%</b>

### Lambeth Borough Police Organisational Structure



## **Glossary**

### **'Sanctioned' Detection Definition**

A 'Sanctioned' Detection is where an allegation has resulted in either a charge, a summons, a caution, a formal warning, a youth reprimand or an offence being taken into consideration i.e. in addition to the charge for which the person is before a court, other offences can be admitted by the defendant and the court asked to take these offences into consideration in passing sentence.

### **Total Robbery**

Combination of Robbery and Commercial Robbery

### **Robbery**

Theft where force or threat of force is made to a person at the time or immediately before in order to steal

### **TNO Total Notifiable Offences**

All notifiable offences which are recorded by police and a crime report is generated

### **I-Call**

Police graded response to answer a 999 call received in the Police Control Room with 10 seconds. Response Time as per Policing Pledge for urban areas is 12 minutes (within 20 mins for rural areas). Giving an estimated time of arrival (TOA) and getting there safely and quickly as possible.

### **CAD**

Computer aided dispatch which is the computer system used within Metropolitan Police Control rooms to record incidents