

# Community Police Consultative Group for Lambeth



## Monthly Police Report

**CPCG**Lambeth

**Data Set: January 2011**

(Starting from April Data)

**Financial Year 2010-2011**

The CPCG report will be produced on a Monthly basis by the Lambeth Police  
Inspection & Review Unit

**Not Protectively Marked**



INDEX

LAMBETH BOROUGH

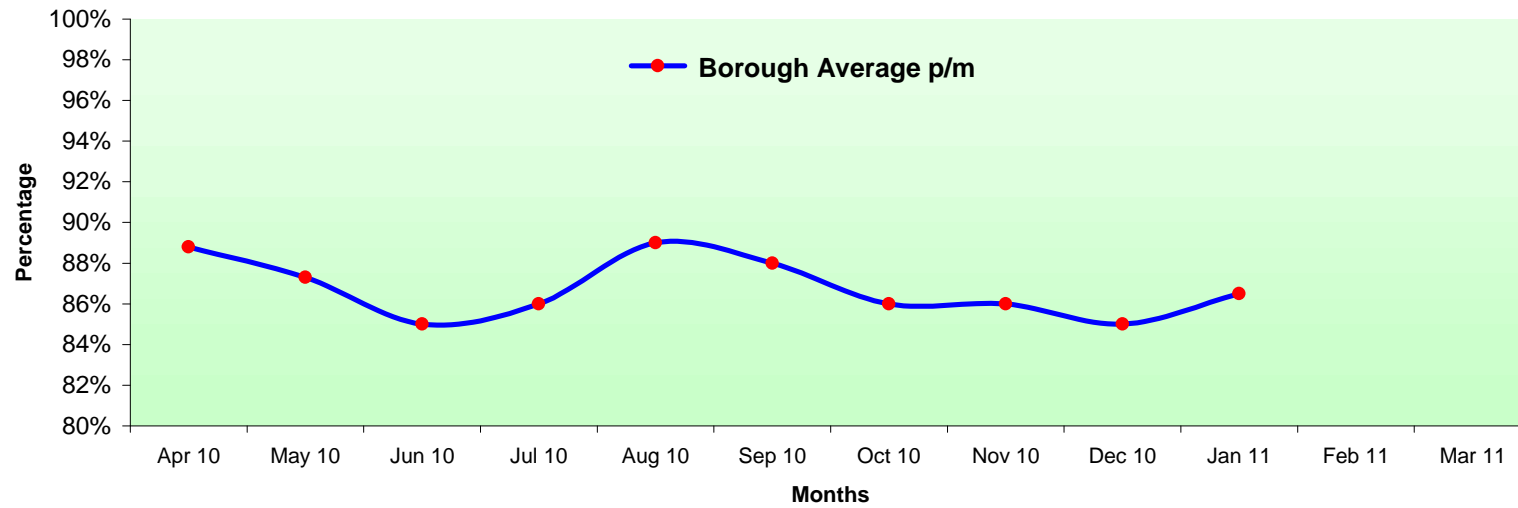
<b>Page 1</b>	<b>CAD Achievements</b>
<b>Pages 2-27</b>	Classified & Confirmed Offences: <b>Robbery Offences</b> <b>Serious Youth Violence</b> <b>Theft Person</b> <b>Theft of MV</b> <b>Theft From MV</b> <b>Other Serious Sexual</b> <b>Rape Offences</b> <b>Possession Of Drugs</b> <b>Murder</b> <b>Most Serious Violence</b> <b>Assault with Injury</b> <b>Burglary Res</b> <b>Criminal Damage Offences</b> <b>Gun Crime</b> <b>Knife Crime</b> <b>Theft Of Pedal Cycles</b> <b>Domestic Offences</b> <b>Homophobic Offences</b> <b>Racist Offences</b> <b>TNO</b> <b>Tier 2 Offences</b> <b>Serious Wounding</b> <b>Drug Supply</b> <b>Violence with Injury</b> <b>Burglary Non-Res</b> <b>Theft from Shops</b>
<b>Pages 28-36</b>	<b>Charts of Above Offences</b>
<b>Page 37</b>	<b>MPS Performance FYTD</b>
<b>Page 38</b>	<b>Organogram</b>
<b>Page 39</b>	<b>Glossary</b>

Protective Marking	Not Protectively Marked
FOIA Exemption	None
Publication Scheme	No
Title and Version	Lambeth Community and Police Consultative Group Monthly Report
Purpose	To Inform Relevant Staff and Community of Performance
Relevant To	All Staff on Lambeth BOCU and community members
Author and warrant / pay number	Trevor Peplow PC 394 LX
OCU / Branch / Unit	Lambeth Police Performance and Review Unit @ Frank O'Neill House
Summary	Report is produced on a monthly basis
Date Created	January 2011
Review Date	Monthly as Required

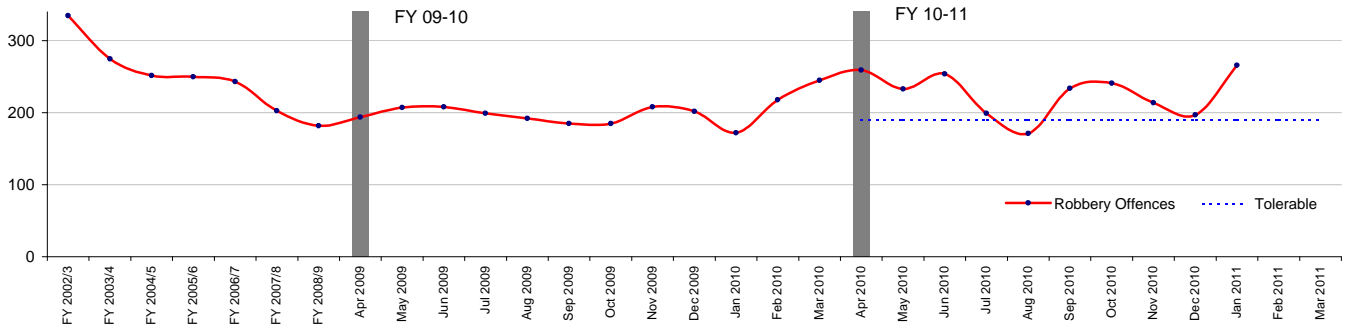
Call Type	Sector / Month	Month											
		Apr 2010	May 2010	Jun 2010	Jul 2010	Aug 2010	Sep 2010	Oct 2010	Nov 2010	Dec 2010	Jan 2011	Feb 2011	Mar 2011
	<b>Borough Average p/m</b>	89%	87%	85%	86%	89%	88%	86%	86%	85%	87%		
	<b>Borough Average YTD</b>	89%	88%	87%	87%	87%	87%	87%	87%	87%	87%		

**Average Response Time for Immediate Calls: 12 mins**

CAD Achievements for Lambeth Borough

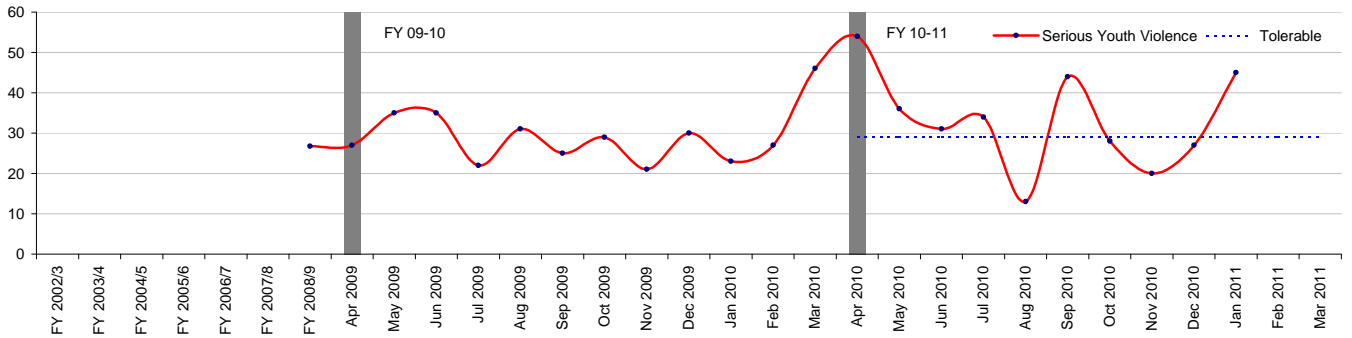


### Robbery Offences



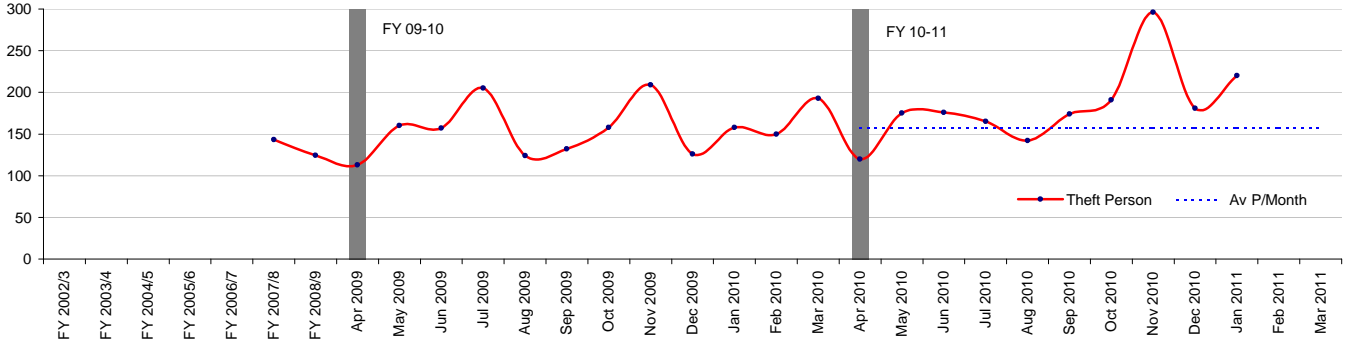
Robbery Offences	
Financial Year to Date Compared to Same Period in last Financial Year	
Current Offences FYTD:	16% Up
Current SD Rate FYTD:	11% (Up from 8%)
Monthly Average:	226.8
Target Offences (Monthly):	189.2
SD Target	19%

### Serious Youth Violence



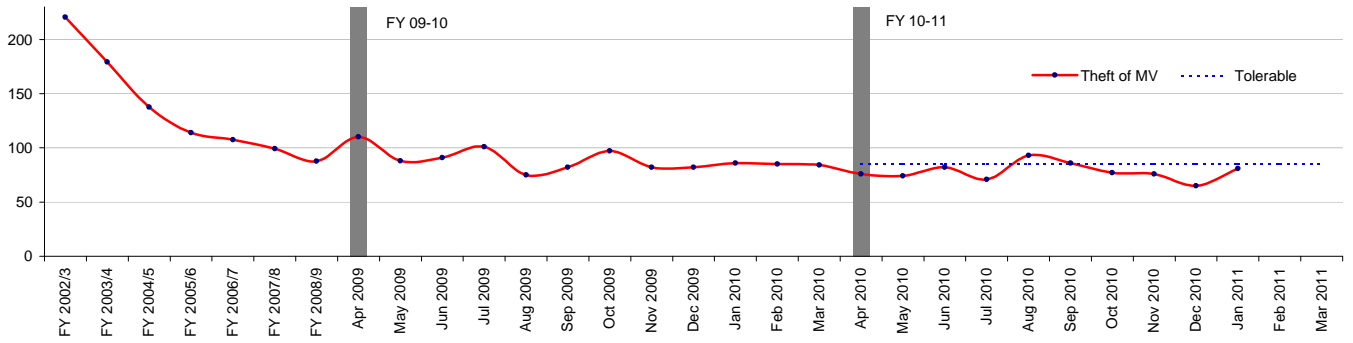
Serious Youth Violence	
Financial Year to Date Compared to Same Period in last Financial Year	
Current Offences FYTD:	19% Up
Current SD Rate FYTD:	0% (Down from 0%)
Monthly Average:	33.2
Target Offences (Monthly):	29.0
SD Target	0%

### Theft Person



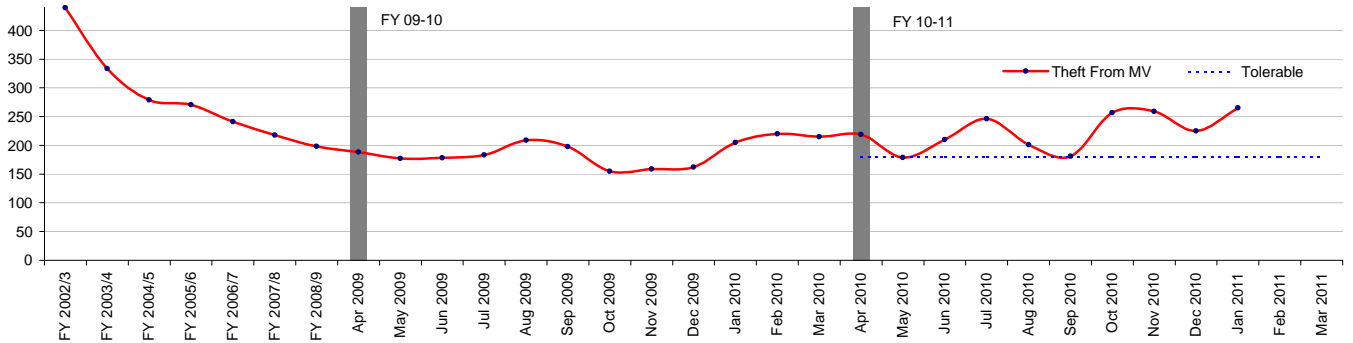
Theft Person	
Financial Year to Date Compared to Same Period in last Financial Year	
Current Offences FYTD:	19% Up
Current SD Rate FYTD:	1% (Down from 3%)
Monthly Average:	184.0
Target Offences (Monthly):	157.1
SD Target	0%

Theft of MV



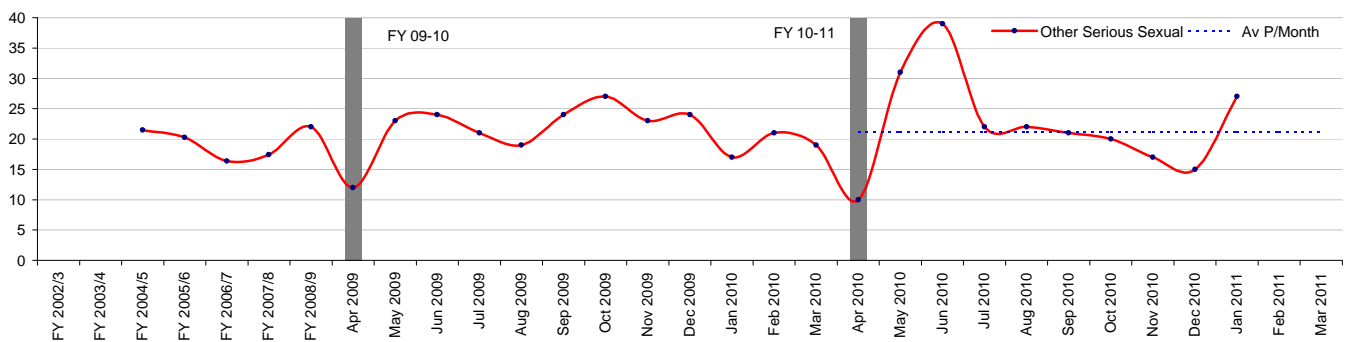
Theft of MV	
Financial Year to Date Compared to Same Period in last Financial Year	
Current Offences FYTD:	-13% Down
Current SD Rate FYTD:	5% (Down from 6%)
Monthly Average:	78.1
Target Offences (Monthly):	85.0
SD Target	8%

Theft From MV



Theft From MV	
Financial Year to Date Compared to Same Period in last Financial Year	
Current Offences FYTD:	24% Up
Current SD Rate FYTD:	3% (Up from 3%)
Monthly Average:	224.2
Target Offences (Monthly):	180.7
SD Target	8%

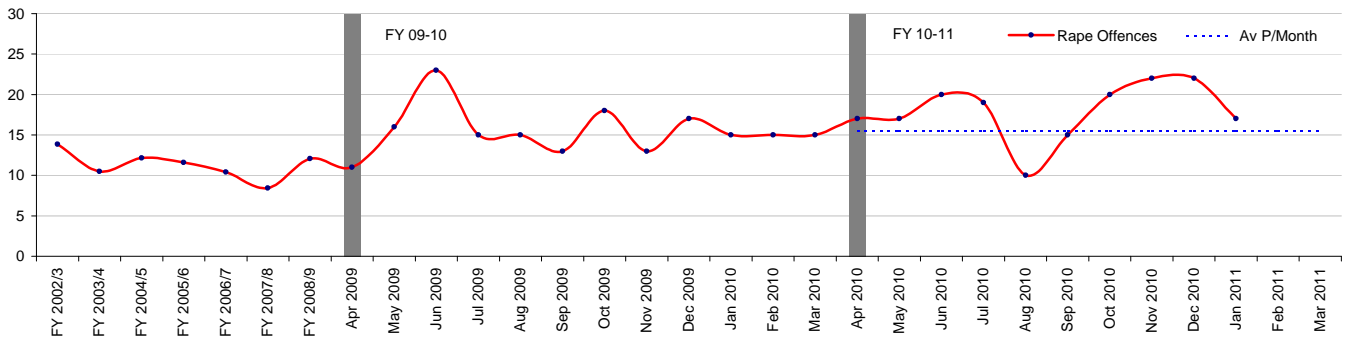
Other Serious Sexual



Other Serious Sexual	
Financial Year to Date Compared to Same Period in last Financial Year	
Current Offences FYTD:	5% Up
Current SD Rate FYTD:	23% (Up from 16%)
Monthly Average:	22.4
Target Offences (Monthly):	21.2
SD Target	0%

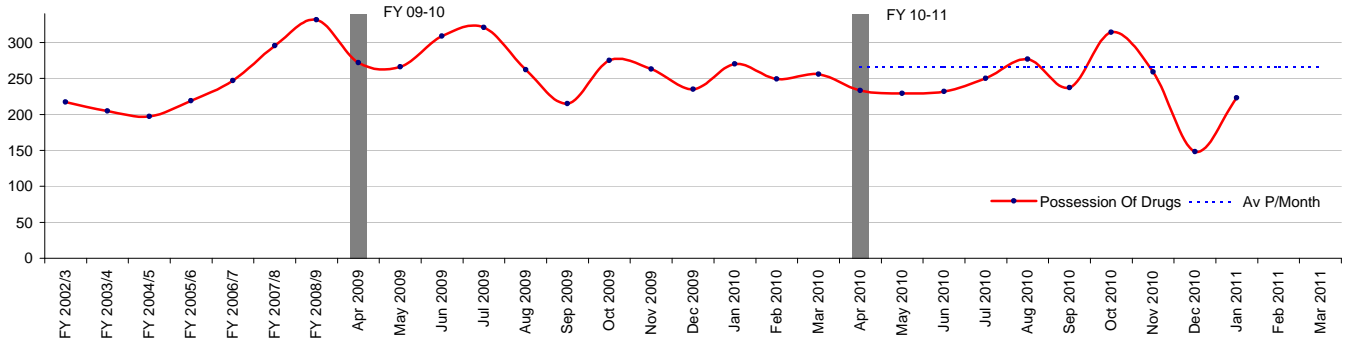
Rape Offences

Rape Offences



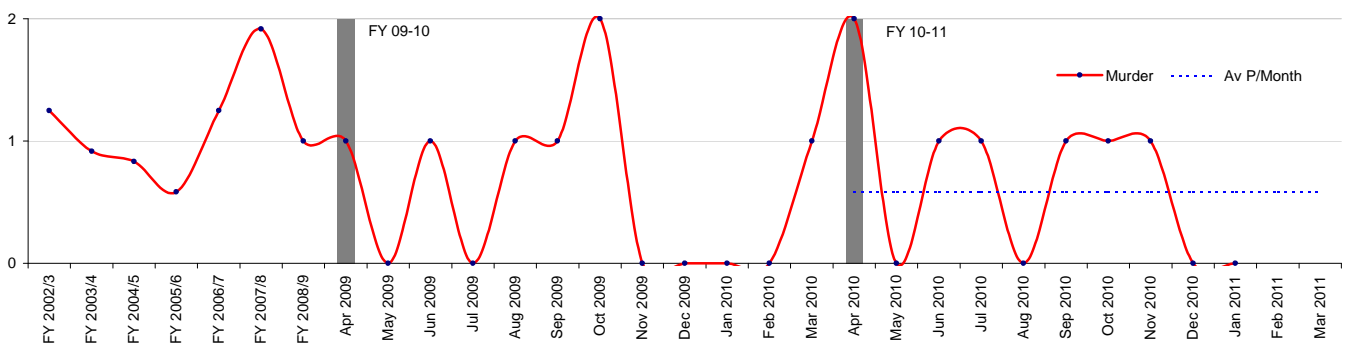
Rape Offences	
Financial Year to Date Compared to Same Period in last Financial Year	
Current Offences FYTD:	15% Up
Current SD Rate FYTD:	15% (Down from 17%)
Monthly Average:	17.9
Target Offences (Monthly):	15.5
SD Target	35%

Possession Of Drugs



Possession Of Drugs	
Financial Year to Date Compared to Same Period in last Financial Year	
Current Offences FYTD:	-11% Down
Current SD Rate FYTD:	87% (Up from 83%)
Monthly Average:	240.2
Target Offences (Monthly):	266.1
SD Target	0%

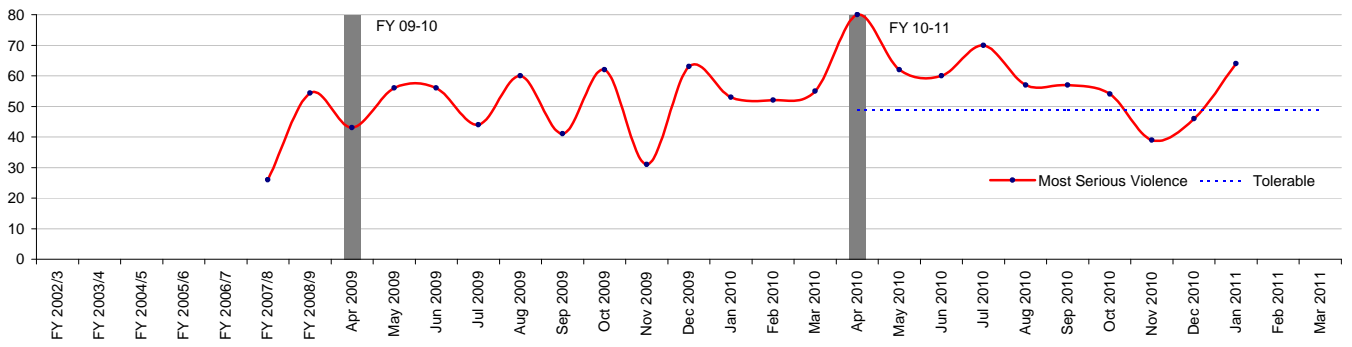
Murder



Murder	
Financial Year to Date Compared to Same Period in last Financial Year	
Current Offences FYTD:	17% Up
Current SD Rate FYTD:	114% (Up from 83%)
Monthly Average:	0.7
Target Offences (Monthly):	0.6
SD Target	0%

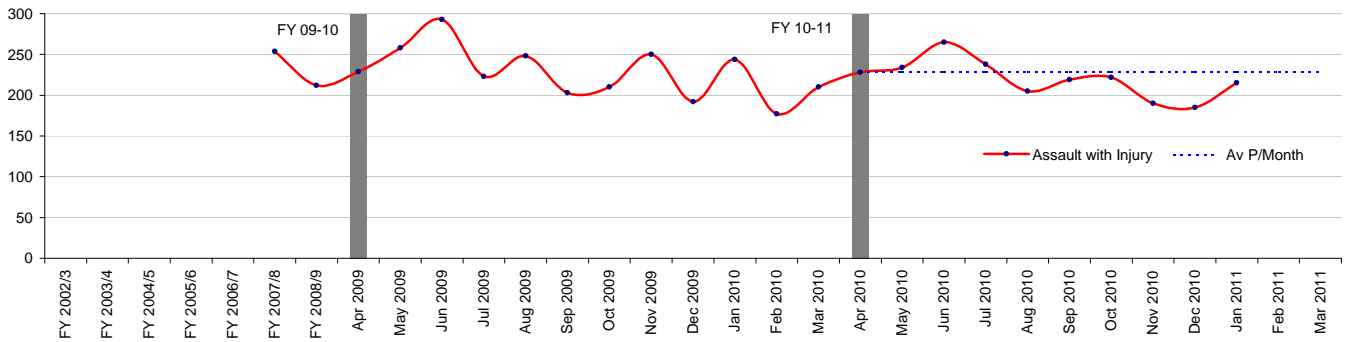
Most Serious Violence

Most Serious Violence



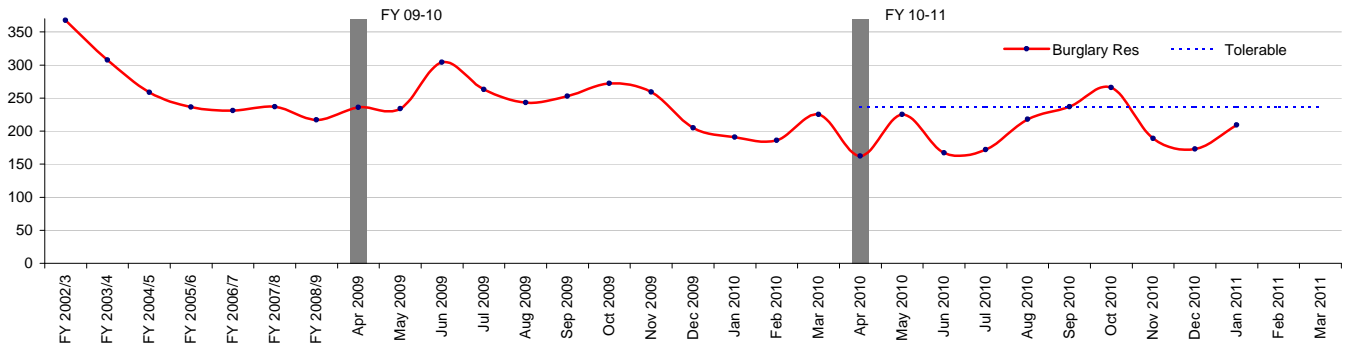
Most Serious Violence	
Financial Year to Date Compared to Same Period in last Financial Year	
Current Offences FYTD:	16% Up
Current SD Rate FYTD:	36% (Up from 33%)
Monthly Average:	58.9
Target Offences (Monthly):	48.8
SD Target	32%

Assault with Injury



Assault with Injury	
Financial Year to Date Compared to Same Period in last Financial Year	
Current Offences FYTD:	-6% Down
Current SD Rate FYTD:	28% (Up from 27%)
Monthly Average:	220.1
Target Offences (Monthly):	228.1
SD Target	0%

Burglary Res

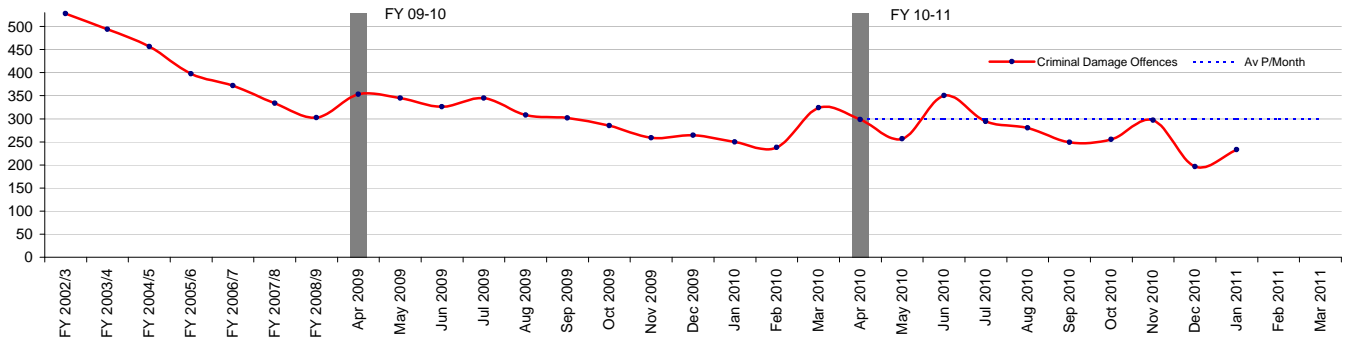


Burglary Res	
Financial Year to Date Compared to Same Period in last Financial Year	
Current Offences FYTD:	-18% Down
Current SD Rate FYTD:	14% (Up from 13%)
Monthly Average:	201.8
Target Offences (Monthly):	236.9
SD Target	16%

Criminal Damage Offences

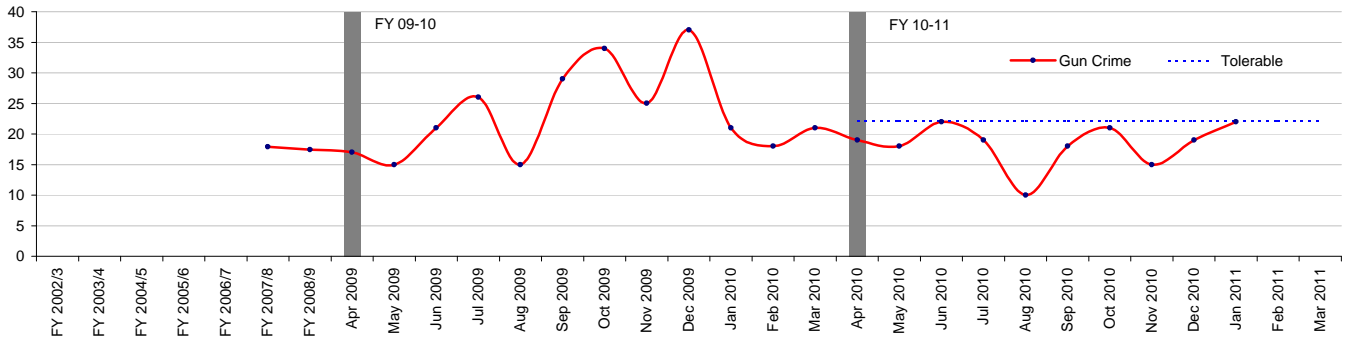


Criminal Damage Offences



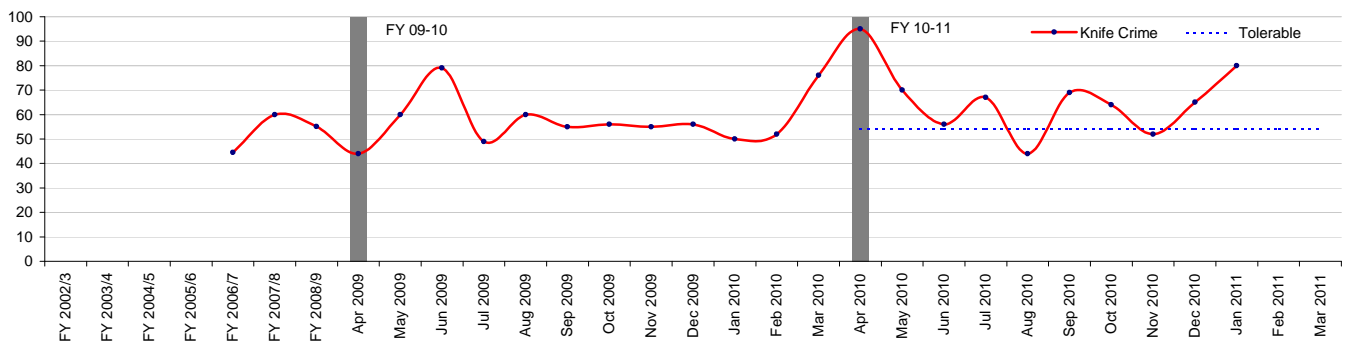
Criminal Damage Offences	
Financial Year to Date Compared to Same Period in last Financial Year	
Current Offences FYTD:	-11% Down
Current SD Rate FYTD:	13% (Up from 11%)
Monthly Average:	270.9
Target Offences (Monthly):	299.9
SD Target	0%

Gun Crime



Gun Crime	
Financial Year to Date Compared to Same Period in last Financial Year	
Current Offences FYTD:	-24% Down
Current SD Rate FYTD:	23% (Up from 15%)
Monthly Average:	18.3
Target Offences (Monthly):	22.1
SD Target	0%

Knife Crime



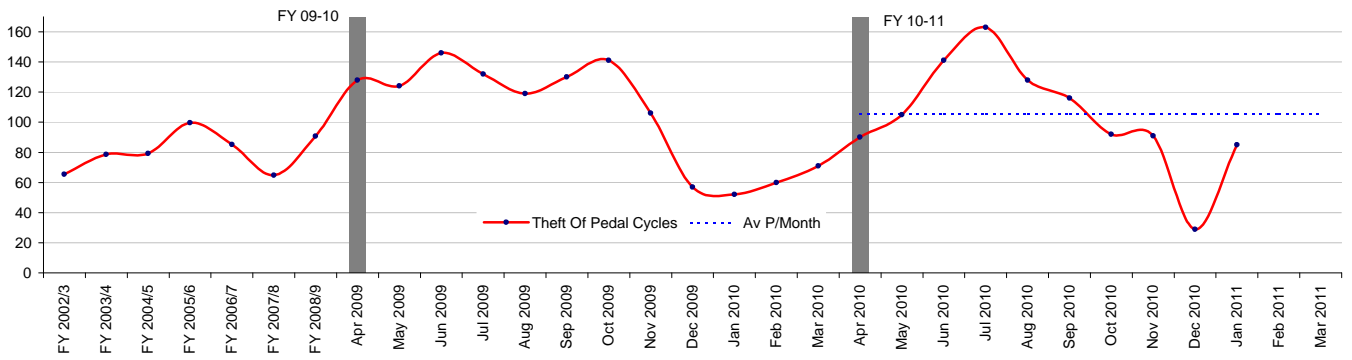
Knife Crime	
Financial Year to Date Compared to Same Period in last Financial Year	
Current Offences FYTD:	17% Up
Current SD Rate FYTD:	16% (Down from 18%)
Monthly Average:	66.2
Target Offences (Monthly):	54.2
SD Target	0%

Theft Of Pedal Cycles



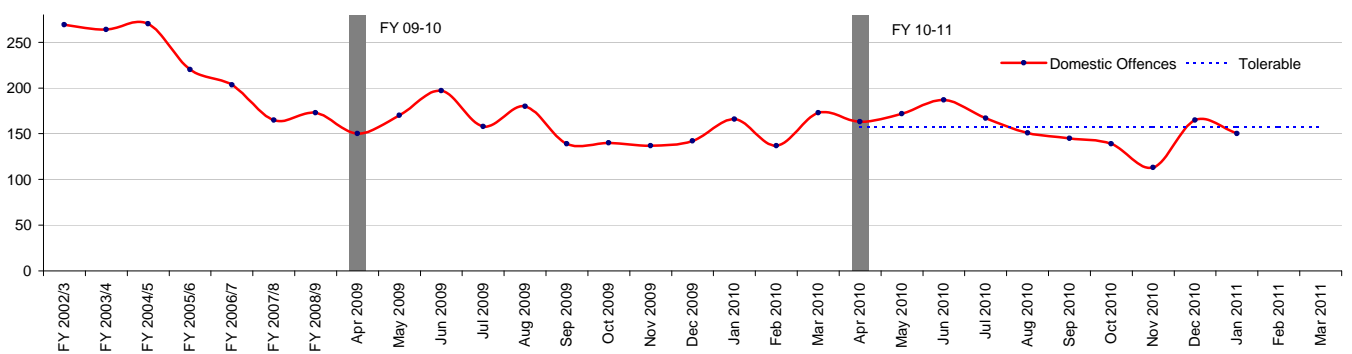


Theft Of Pedal Cycles



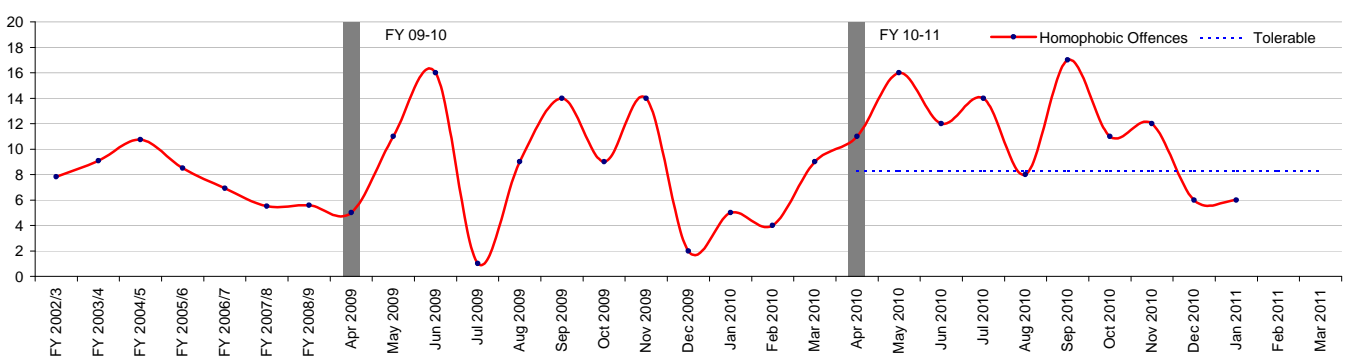
Theft Of Pedal Cycles	
Financial Year to Date Compared to Same Period in last Financial Year	
Current Offences FYTD:	-8% Down
Current SD Rate FYTD:	1% (Down from 2%)
Monthly Average:	104.0
Target Offences (Monthly):	105.5
SD Target	0%

Domestic Offences



Domestic Offences	
Financial Year to Date Compared to Same Period in last Financial Year	
Current Offences FYTD:	-2% Down
Current SD Rate FYTD:	47% (Down from 47%)
Monthly Average:	155.2
Target Offences (Monthly):	157.4
SD Target	45%

Homophobic Offences

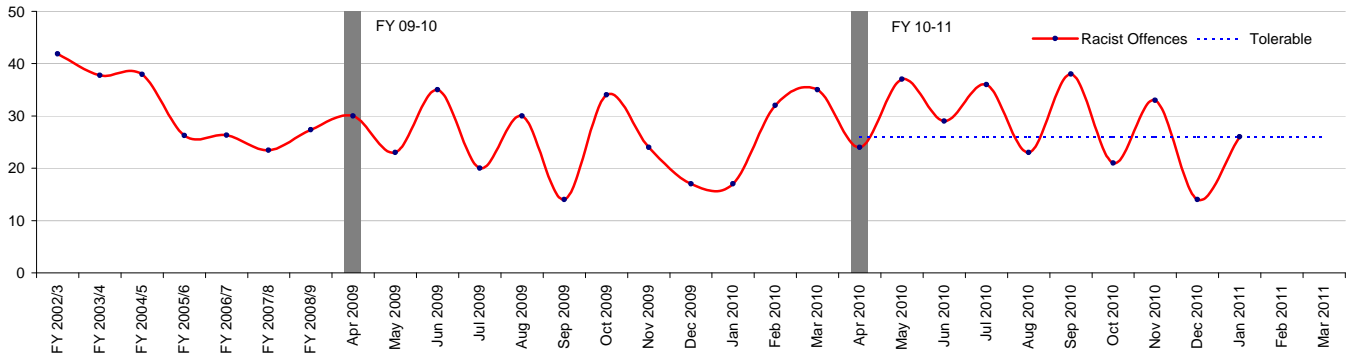


Homophobic Offences	
Financial Year to Date Compared to Same Period in last Financial Year	
Current Offences FYTD:	31% Up
Current SD Rate FYTD:	53% (Up from 47%)
Monthly Average:	11.3
Target Offences (Monthly):	8.3
SD Target	44%

Racist Offences

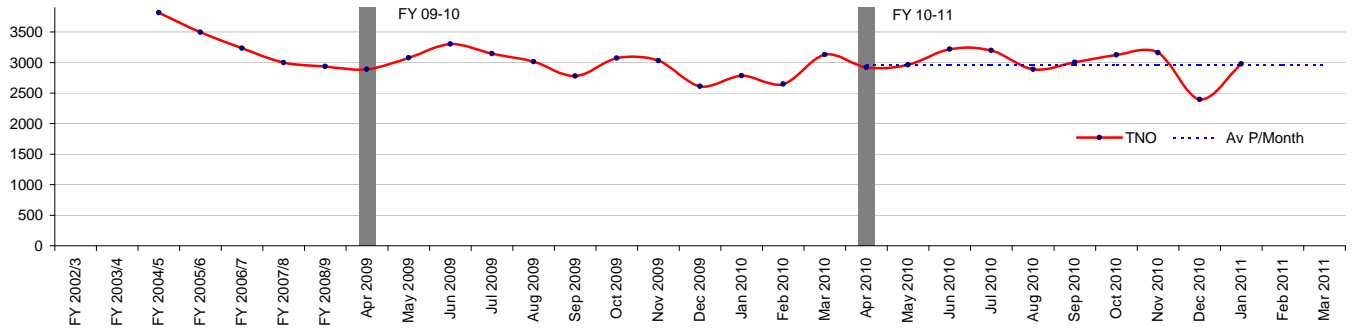


Racist Offences



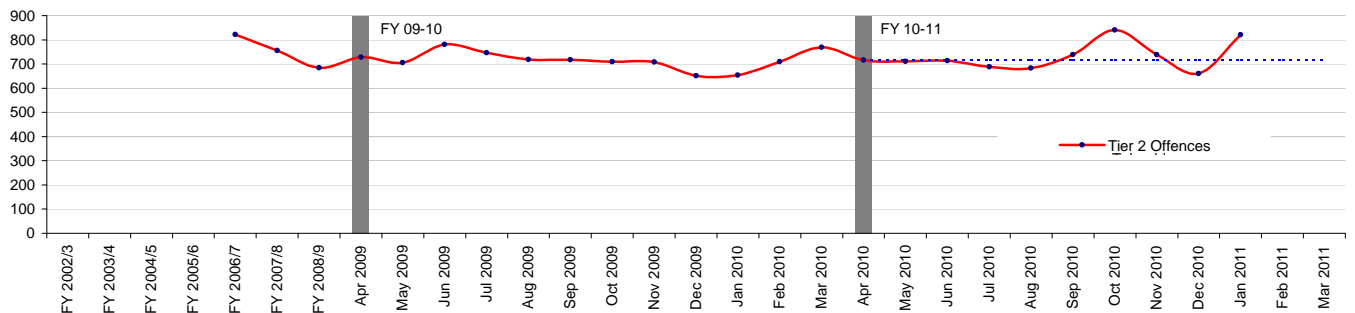
Racist Offences	
Financial Year to Date Compared to Same Period in last Financial Year	
Current Offences FYTD:	15% Up
Current SD Rate FYTD:	52% (Down from 56%)
Monthly Average:	28.1
Target Offences (Monthly):	25.9
SD Target	50%

TNO



TNO	
Financial Year to Date Compared to Same Period in last Financial Year	
Current Offences FYTD:	1% Up
Current SD Rate FYTD:	22% (Down from 23%)
Monthly Average:	2984
Target Offences (Monthly):	2956
SD Target	0%

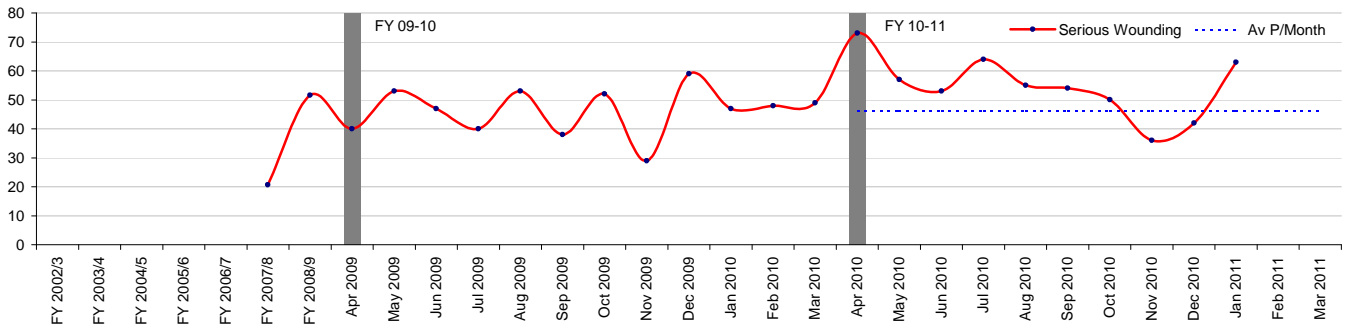
Tier 2 Offences



Tier 2 Offences	
Financial Year to Date Compared to Same Period in last Financial Year	
Current Offences FYTD:	3% Up
Current SD Rate FYTD:	9% (Up from 8%)
Monthly Average:	731
Target Offences (Monthly):	717
SD Target	13%

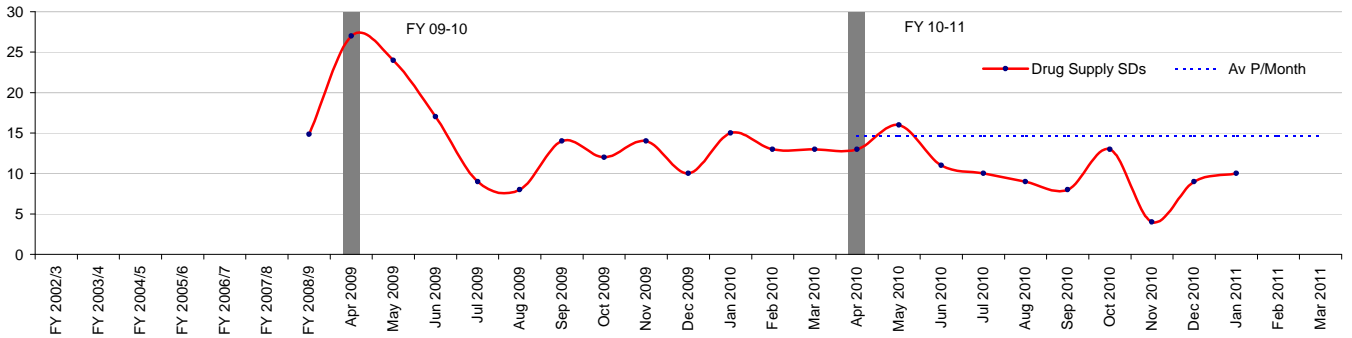
Serious Wounding

Serious Wounding



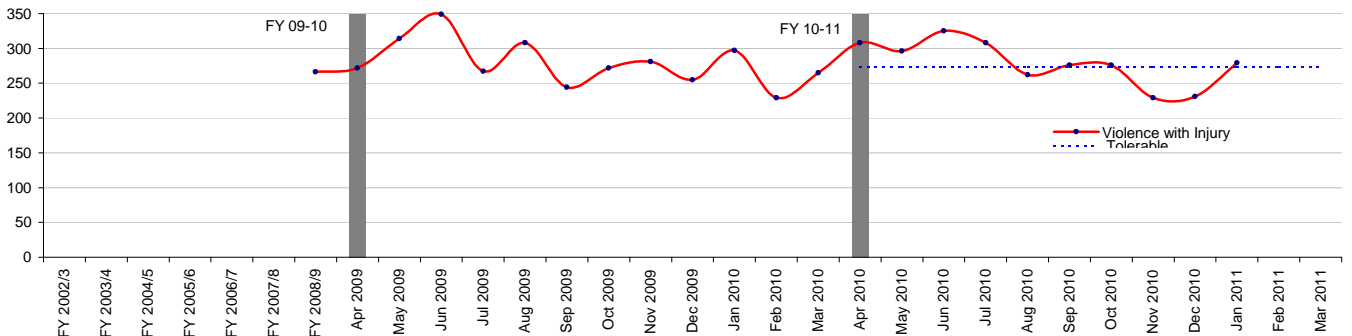
Serious Wounding	
Financial Year to Date Compared to Same Period in last Financial Year	
Current Offences FYTD:	19% Up
Current SD Rate FYTD:	35% (Up from 31%)
Monthly Average:	54.7
Target Offences (Monthly):	46.3
SD Target	0%

Drug Supply SDs



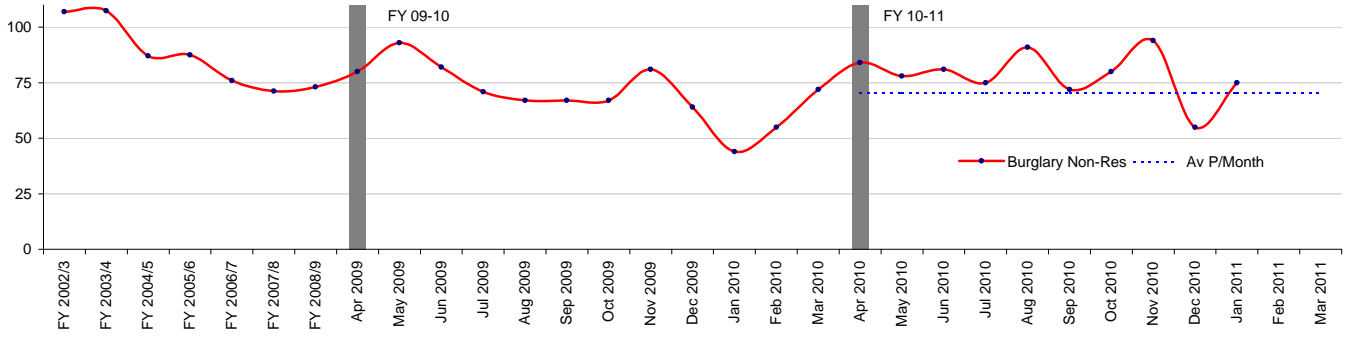
Drug Supply SDs	
Financial Year to Date Compared to Same Period in last Financial Year	
Current Offences FYTD:	-31% Down
Current SD Rate FYTD:	0% ( from 0%)
Monthly Average:	10.3
Target Offences (Monthly):	14.7
SD Target	0%

Violence with Injury



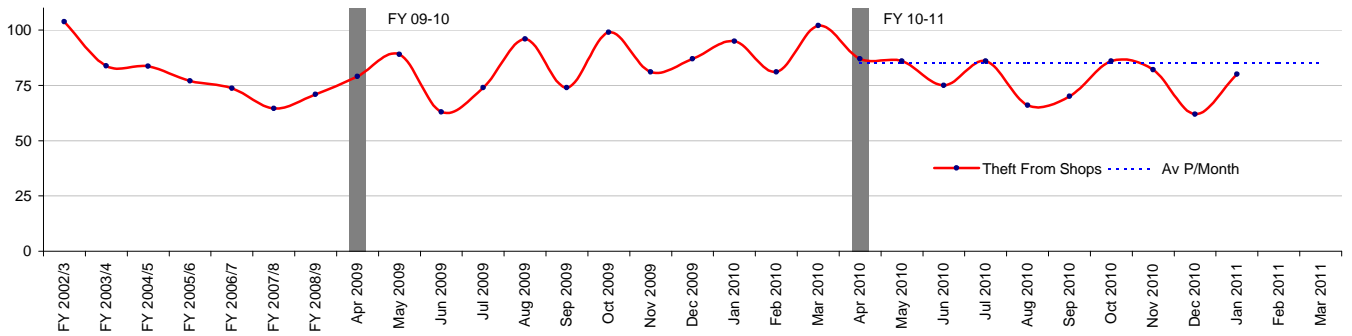
Violence with Injury	
Financial Year to Date Compared to Same Period in last Financial Year	
Current Offences FYTD:	-2% Down
Current SD Rate FYTD:	29% (Up from 28%)
Monthly Average:	279
Target Offences (Monthly):	273.8
SD Target	35%

Burglary Non-Res



Burglary Non-Res	
Financial Year to Date Compared to Same Period in last Financial Year	
Current Offences FYTD:	10% Up
Current SD Rate FYTD:	8% (Down from 11%)
Monthly Average:	78.5
Target Offences (Monthly):	70.3
SD Target	0%

Theft From Shops



Theft From Shops	
Financial Year to Date Compared to Same Period in last Financial Year	
Current Offences FYTD:	-7% Down
Current SD Rate FYTD:	48% (Up from 47%)
Monthly Average:	78.0
Target Offences (Monthly):	85.0
SD Target	0%

### Financial Year To Date Crime Performance

	FY 2010 to Jan (ytd)	FY 2009 to Jan (ytd)	Difference	% Change
Total Crimes	29,844	29,693	151	<b>0.5%</b>
Homicide	7	6	1	<b>16.7%</b>
Violence Against the Person (Total)	6,520	6,574	-54	<b>-0.8%</b>
Rape	179	156	23	<b>14.7%</b>
Other Sexual	294	308	-14	<b>-4.5%</b>
Robbery (Total)	2268	1952	316	<b>16.2%</b>
Robbery (Person)	2075	1746	329	<b>18.8%</b>
Robbery (Business)	193	206	-13	<b>-6.3%</b>
Burglary (Total)	2,803	3,176	-373	<b>-11.7%</b>
Burglary Residential	2,018	2460	-442	<b>-18.0%</b>
Burglary Non- Residential	785	716	69	<b>9.6%</b>
Gun Enabled Crime	183	240	-57	<b>-23.8%</b>
Motor Vehicle Crime	3,023	2,708	315	<b>11.6%</b>
Domestic Crime	1552	1579	-27	<b>-1.7%</b>
Racist Crime	281	244	37	<b>15.2%</b>
Homophobic Crime	113	86	27	<b>31.4%</b>