

Community Police Consultative Group for Lambeth



Monthly Police Report

CPCGLambeth

April 2011

Data Set: February 2011

(Starting from April Data)

Financial Year 2010-2011

The CPCG report will be produced on a Monthly basis by the Lambeth Police
Inspection & Review Unit

Not Protectively Marked



INDEX

LAMBETH BOROUGH

Page 1	CAD Achievements
Pages 2-27	Classified & Confirmed Offences: Robbery Offences Serious Youth Violence Theft Person Theft of MV Theft From MV Other Serious Sexual Rape Offences Possession Of Drugs Murder Most Serious Violence Assault with Injury Burglary Res Criminal Damage Offences Gun Crime Knife Crime Theft Of Pedal Cycles Domestic Offences Homophobic Offences Racist Offences TNO Tier 2 Offences Serious Wounding Drug Supply Violence with Injury Burglary Non-Res Theft from Shops
Pages 28-36	Charts of Above Offences
Page 37	MPS Performance FYTD
Page 38	Organogram
Page 39	Glossary

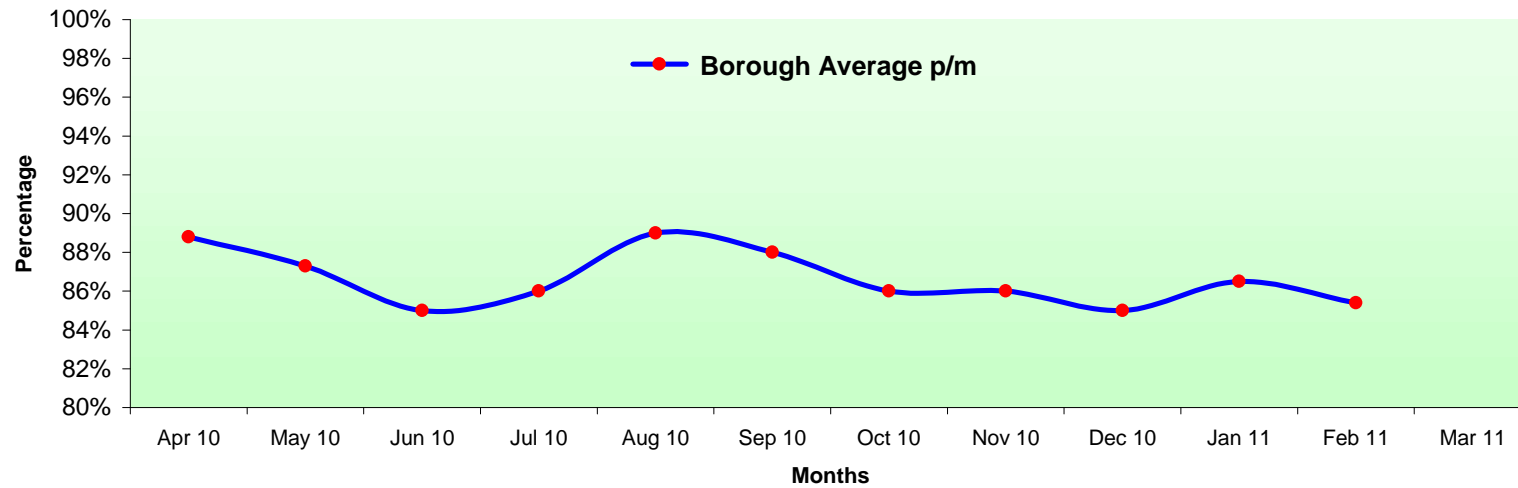
Protective Marking	Not Protectively Marked
FOIA Exemption	None
Publication Scheme	No
Title and Version	Lambeth Community and Police Consultative Group Monthly Report
Purpose	To Inform Relevant Staff and Community of Performance
Relevant To	All Staff on Lambeth BOCU and community members
Author and warrant / pay number	Trevor Peplow PC 394 LX
OCU / Branch / Unit	Lambeth Police Performance and Review Unit @ Frank O'Neill House
Summary	Report is produced on a monthly basis
Date Created	February 2011
Review Date	Monthly as Required

CAD Achievement Trends

Call Type	Sector / Month	Apr 2010	May 2010	Jun 2010	Jul 2010	Aug 2010	Sep 2010	Oct 2010	Nov 2010	Dec 2010	Jan 2011	Feb 2011	Mar 2011
		Borough Average p/m	89%	87%	85%	86%	89%	88%	86%	86%	85%	87%	85%
Borough Average YTD		89%	88%	87%	87%	87%	87%	87%	87%	87%	87%	87%	

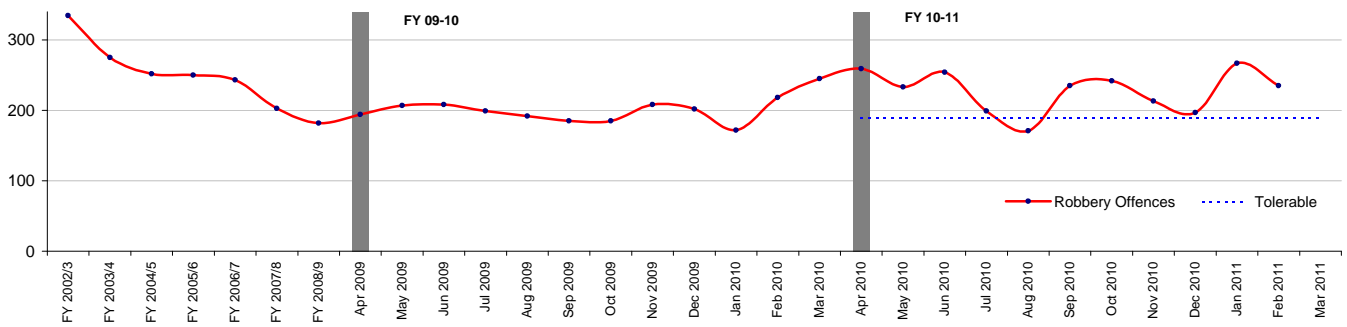
Average Response Time for Immediate Calls: 12 mins

CAD Achievements for Lambeth Borough



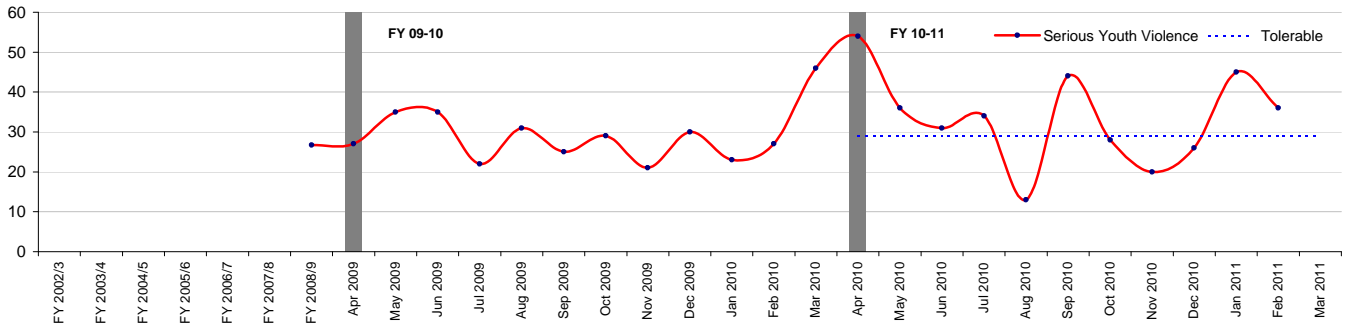
Community Police Consultative Group for Lambeth-Monthly Report

Robbery Offences



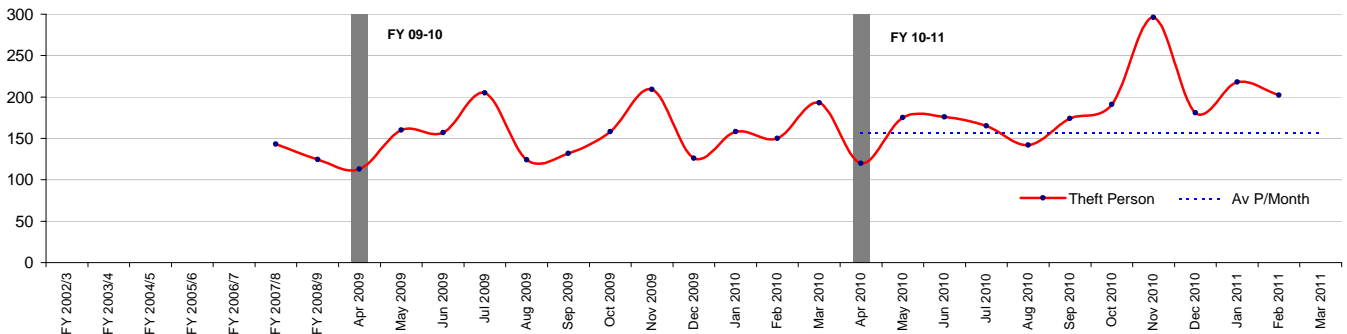
Robbery Offences	
Financial Year to Date Compared to Same Period in last Financial Year	
Current Offences FYTD:	15% Up
Current SD Rate FYTD:	11% (Up from 9%)
Monthly Average:	227.7
Target Offences (Monthly):	189.2
SD Target	19%

Serious Youth Violence



Serious Youth Violence	
Financial Year to Date Compared to Same Period in last Financial Year	
Current Offences FYTD:	20% Up
Current SD Rate FYTD:	0% (Down from 0%)
Monthly Average:	33.36364
Target Offences (Monthly):	29.0
SD Target	0%

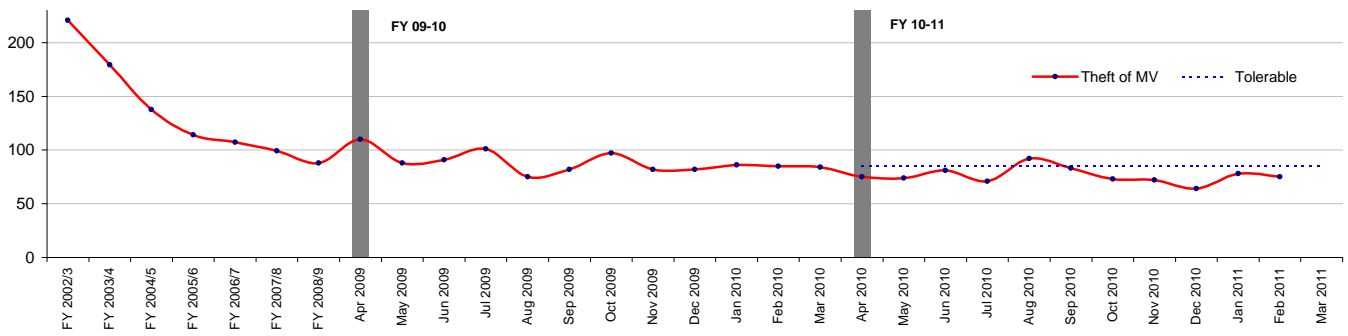
Theft Person



Theft Person	
Financial Year to Date Compared to Same Period in last Financial Year	
Current Offences FYTD:	21% Up
Current SD Rate FYTD:	1% (Down from 2%)
Monthly Average:	185.5
Target Offences (Monthly):	157.1
SD Target	0%

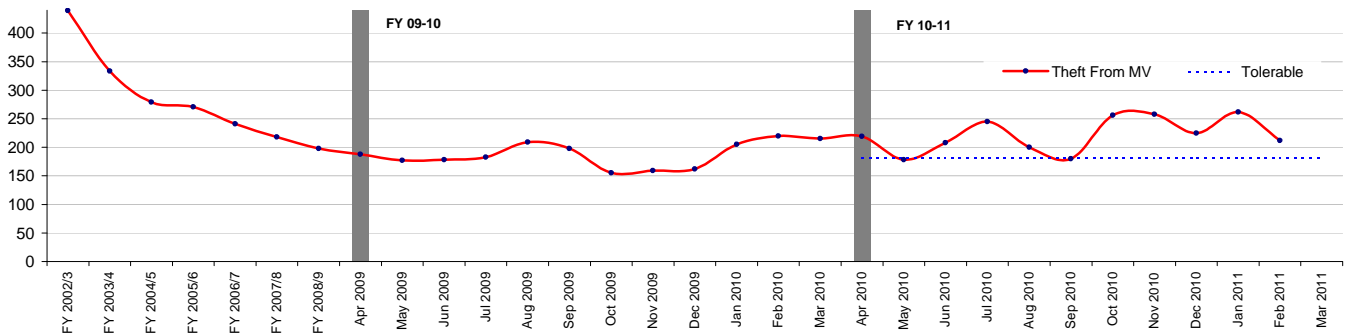
Community Police Consultative Group for Lambeth-Monthly Report

Theft of MV



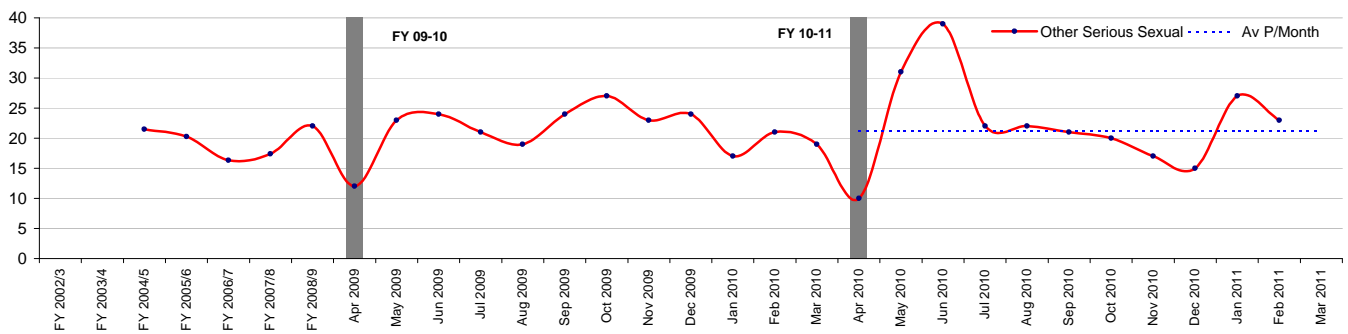
Theft of MV	
<i>Financial Year to Date Compared to Same Period in last Financial Year</i>	
Current Offences FYTD:	-14% Down
Current SD Rate FYTD:	5% (Down from 6%)
Monthly Average:	76.2
Target Offences (Monthly):	85.0
SD Target	8%

Theft From MV



Theft From MV	
<i>Financial Year to Date Compared to Same Period in last Financial Year</i>	
Current Offences FYTD:	20% Up
Current SD Rate FYTD:	3% (Up from 2%)
Monthly Average:	222.0909
Target Offences (Monthly):	180.7
SD Target	8%

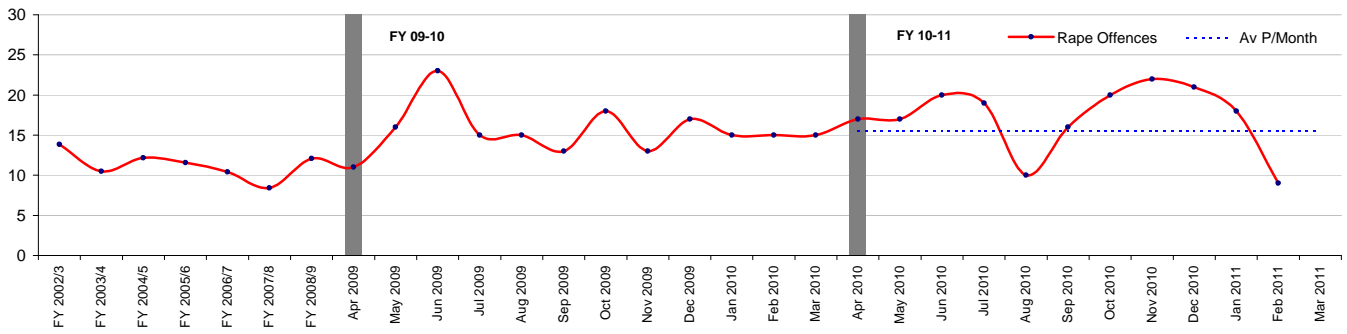
Other Serious Sexual



Other Serious Sexual	
<i>Financial Year to Date Compared to Same Period in last Financial Year</i>	
Current Offences FYTD:	5% Up
Current SD Rate FYTD:	21% (Up from 20%)
Monthly Average:	22.5
Target Offences (Monthly):	21.2
SD Target	0%

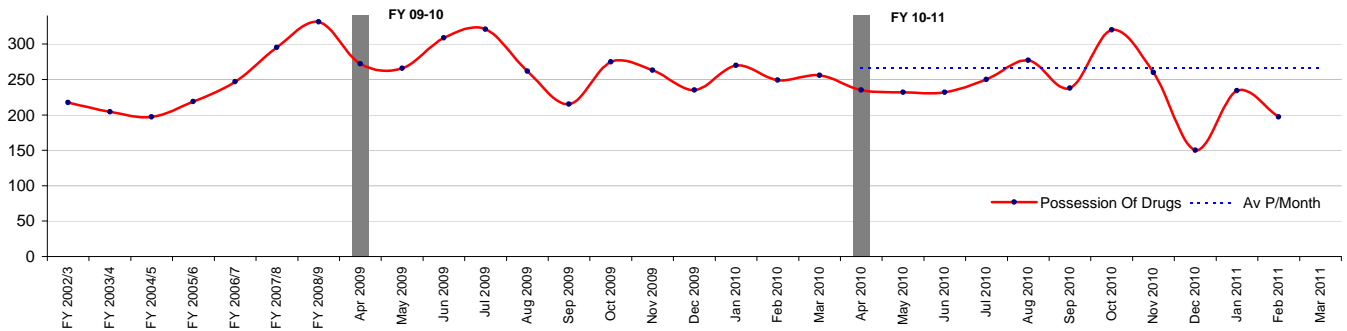
Community Police Consultative Group for Lambeth-Monthly Report

Rape Offences



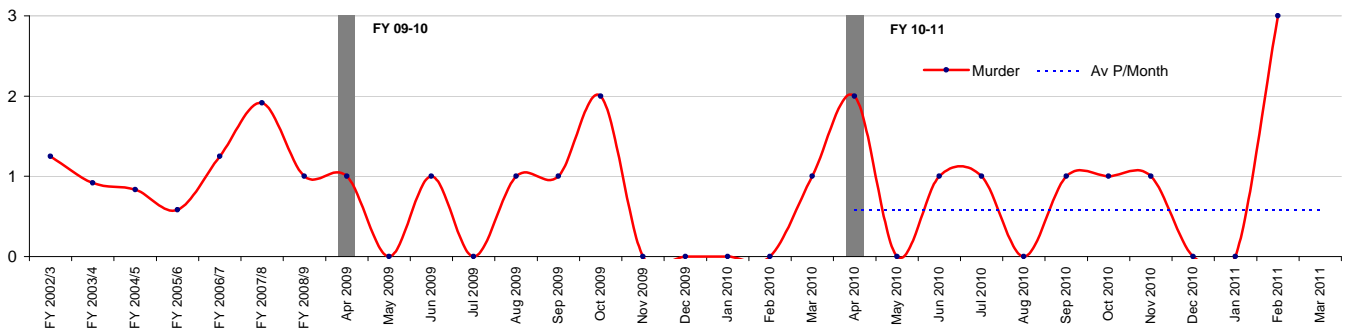
Rape Offences	
Financial Year to Date Compared to Same Period in last Financial Year	
Current Offences FYTD:	11% Up
Current SD Rate FYTD:	15% (Down from 16%)
Monthly Average:	17.2
Target Offences (Monthly):	15.5
SD Target	35%

Possession Of Drugs



Possession Of Drugs	
Financial Year to Date Compared to Same Period in last Financial Year	
Current Offences FYTD:	-11% Down
Current SD Rate FYTD:	85% (Down from 86%)
Monthly Average:	238.6364
Target Offences (Monthly):	266.1
SD Target	0%

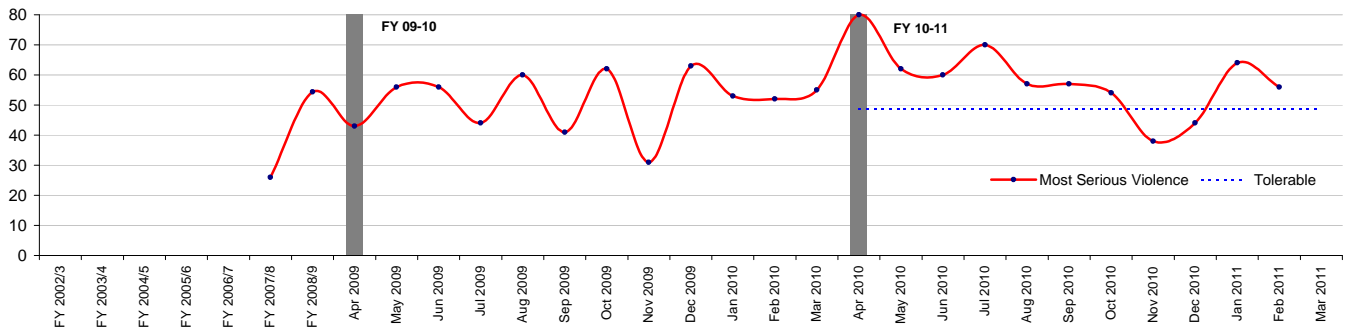
Murder



Murder	
Financial Year to Date Compared to Same Period in last Financial Year	
Current Offences FYTD:	67% Up
Current SD Rate FYTD:	100% (Up from 83%)
Monthly Average:	0.9
Target Offences (Monthly):	0.6
SD Target	0%

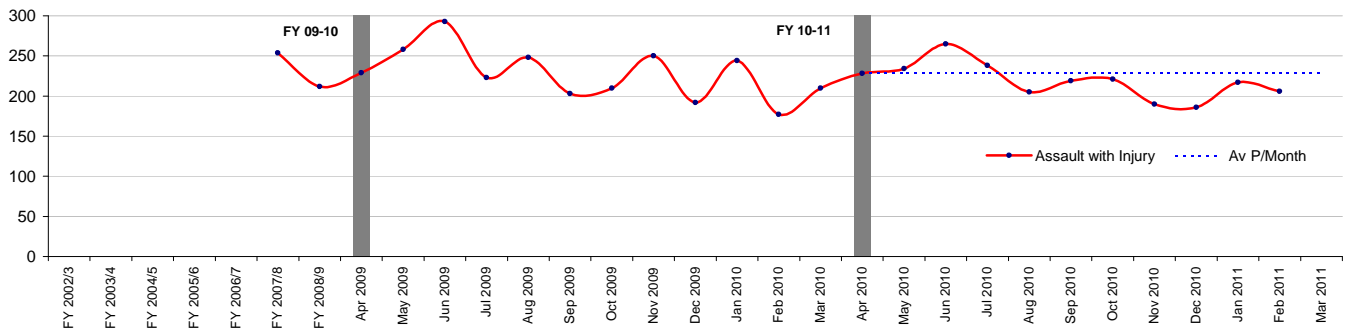
Community Police Consultative Group for Lambeth-Monthly Report

Most Serious Violence



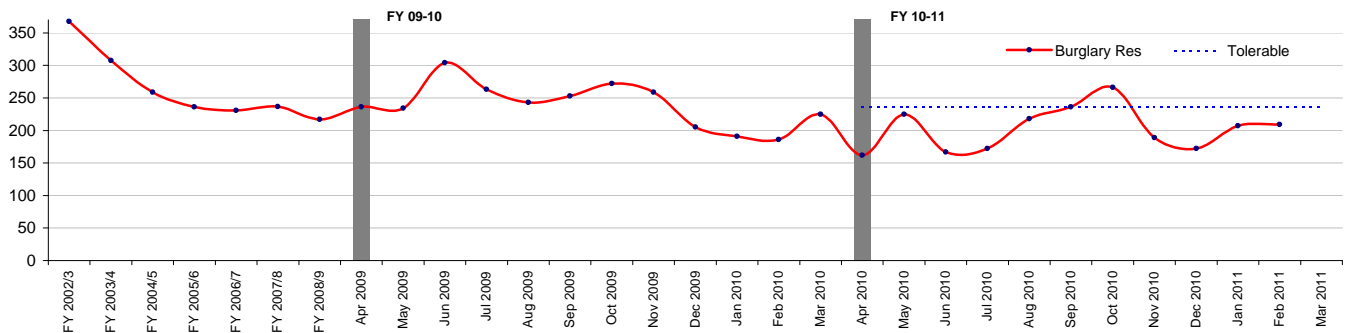
Most Serious Violence	
<i>Financial Year to Date Compared to Same Period in last Financial Year</i>	
Current Offences FYTD:	14% Up
Current SD Rate FYTD:	35% (Down from 36%)
Monthly Average:	58.4
Target Offences (Monthly):	48.8
SD Target	32%

Assault with Injury



Assault with Injury	
<i>Financial Year to Date Compared to Same Period in last Financial Year</i>	
Current Offences FYTD:	-5% Down
Current SD Rate FYTD:	27% (Down from 28%)
Monthly Average:	219.0
Target Offences (Monthly):	228.1
SD Target	0%

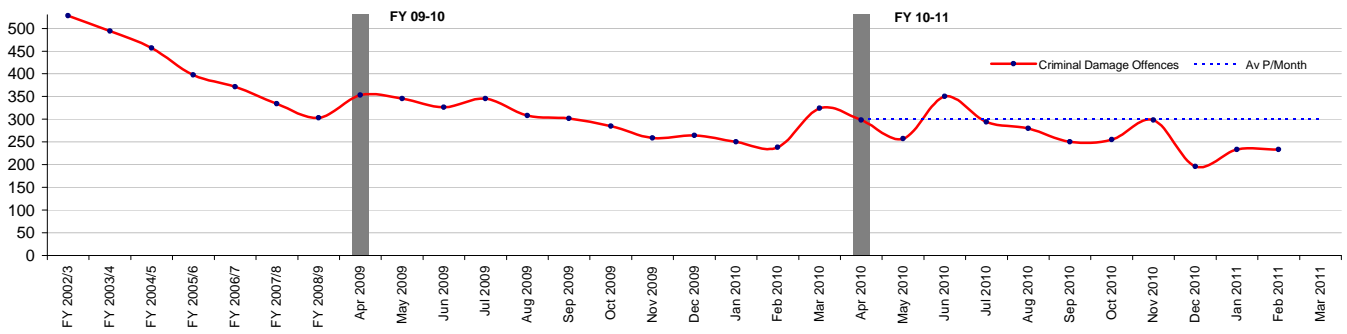
Burglary Res



Burglary Res	
<i>Financial Year to Date Compared to Same Period in last Financial Year</i>	
Current Offences FYTD:	-16% Down
Current SD Rate FYTD:	13% (Down from 14%)
Monthly Average:	202.1
Target Offences (Monthly):	236.9
SD Target	16%

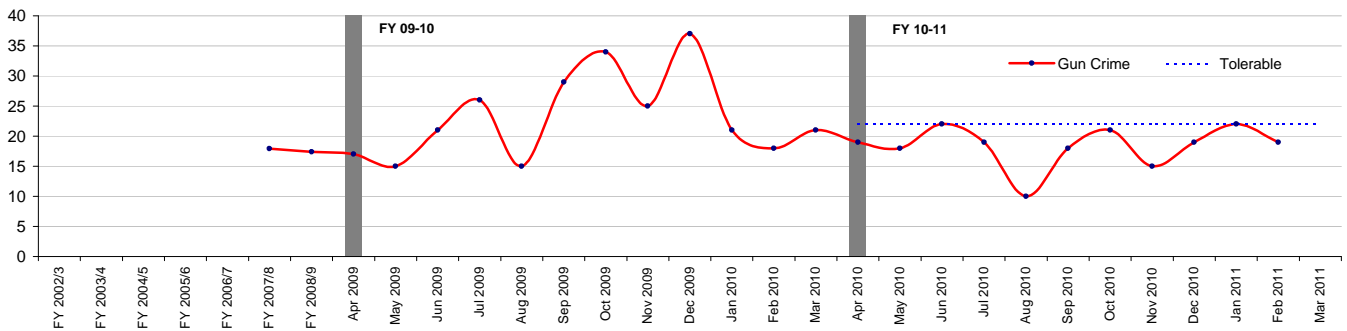
Community Police Consultative Group for Lambeth-Monthly Report

Criminal Damage Offences



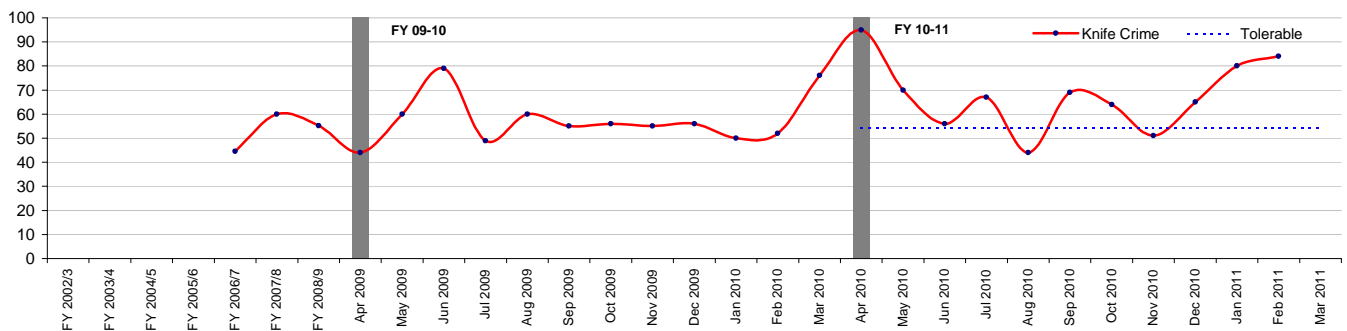
Criminal Damage Offences	
Financial Year to Date Compared to Same Period in last Financial Year	
Current Offences FYTD:	-10% Down
Current SD Rate FYTD:	13% (Up from 11%)
Monthly Average:	267.6
Target Offences (Monthly):	299.9
SD Target	0%

Gun Crime



Gun Crime	
Financial Year to Date Compared to Same Period in last Financial Year	
Current Offences FYTD:	-22% Down
Current SD Rate FYTD:	25% (Up from 16%)
Monthly Average:	18.36364
Target Offences (Monthly):	22.1
SD Target	0%

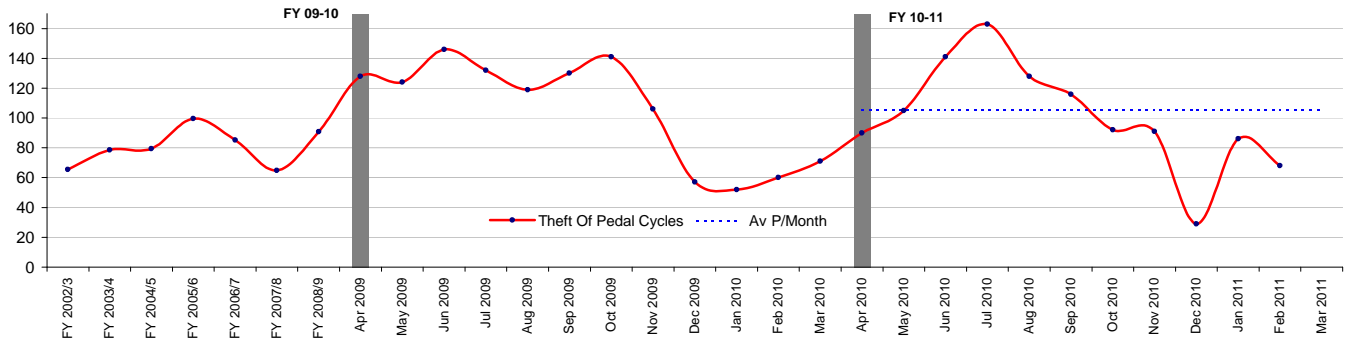
Knife Crime



Knife Crime	
Financial Year to Date Compared to Same Period in last Financial Year	
Current Offences FYTD:	21% Up
Current SD Rate FYTD:	16% (Down from 19%)
Monthly Average:	67.72727
Target Offences (Monthly):	54.2
SD Target	0%

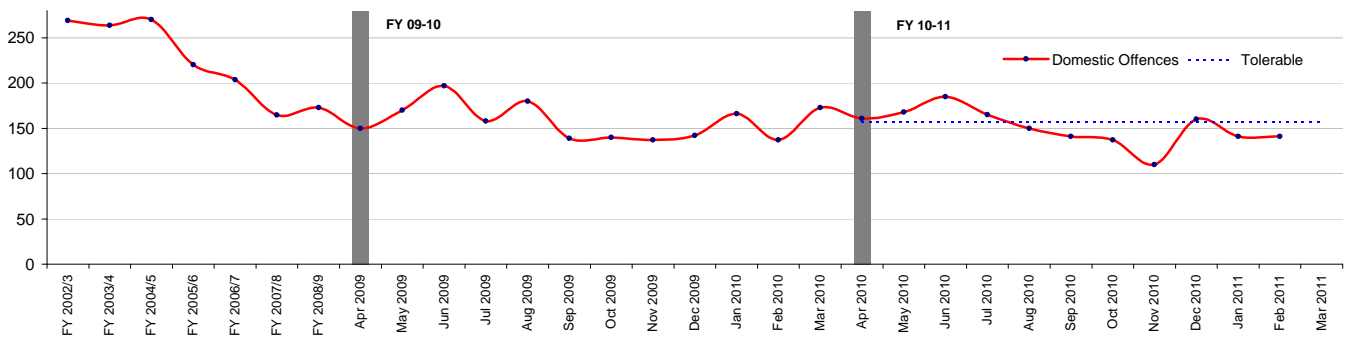
Community Police Consultative Group for Lambeth-Monthly Report

Theft Of Pedal Cycles



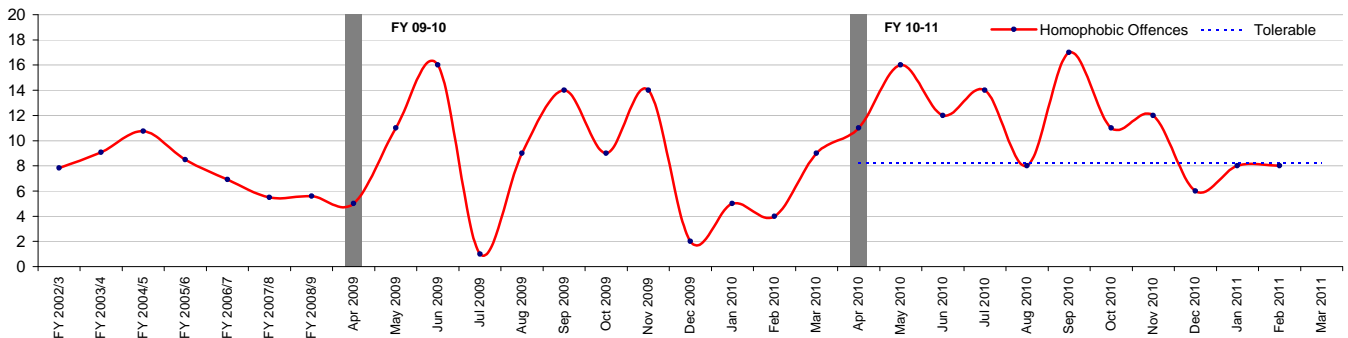
Theft Of Pedal Cycles	
<i>Financial Year to Date Compared to Same Period in last Financial Year</i>	
Current Offences FYTD:	-7% Down
Current SD Rate FYTD:	1% (Down from 2%)
Monthly Average:	100.8
Target Offences (Monthly):	105.5
SD Target	0%

Domestic Offences



Domestic Offences	
<i>Financial Year to Date Compared to Same Period in last Financial Year</i>	
Current Offences FYTD:	-3% Down
Current SD Rate FYTD:	46% (Down from 49%)
Monthly Average:	150.8182
Target Offences (Monthly):	157.4
SD Target	45%

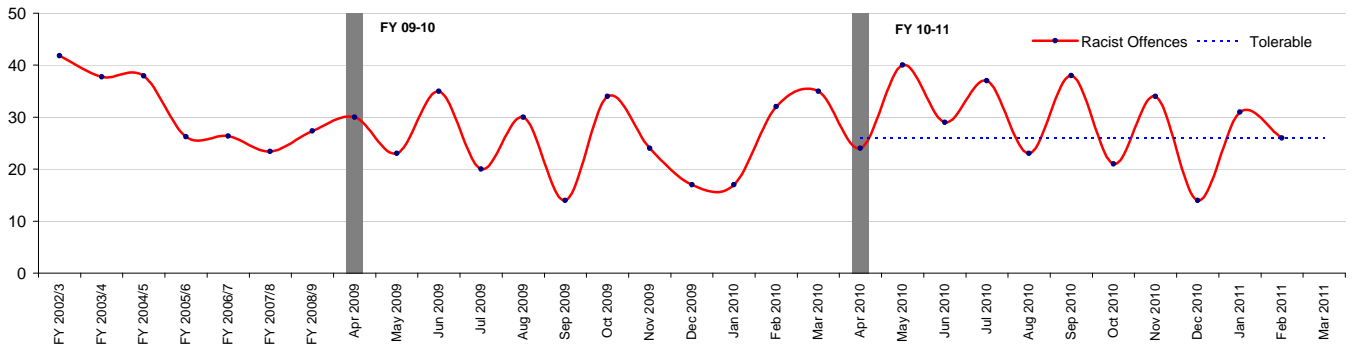
Homophobic Offences



Homophobic Offences	
<i>Financial Year to Date Compared to Same Period in last Financial Year</i>	
Current Offences FYTD:	37% Up
Current SD Rate FYTD:	54% (Up from 51%)
Monthly Average:	11.2
Target Offences (Monthly):	8.3
SD Target	44%

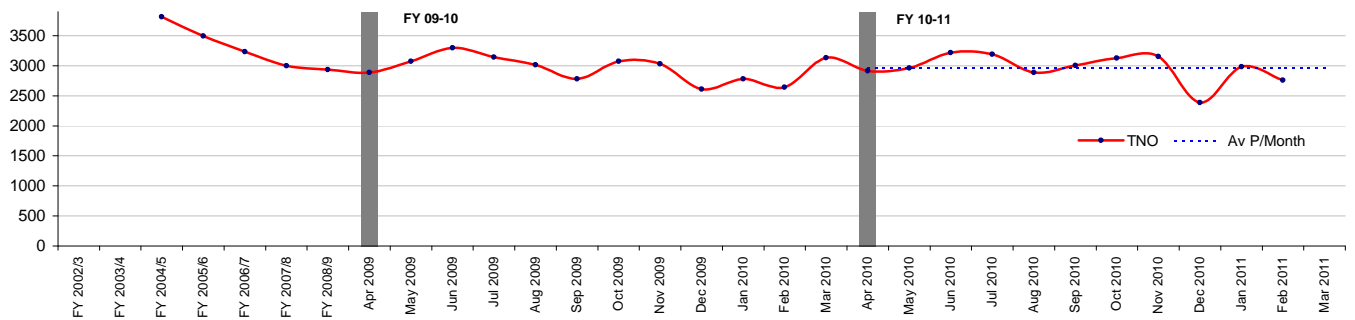
Community Police Consultative Group for Lambeth-Monthly Report

Racist Offences



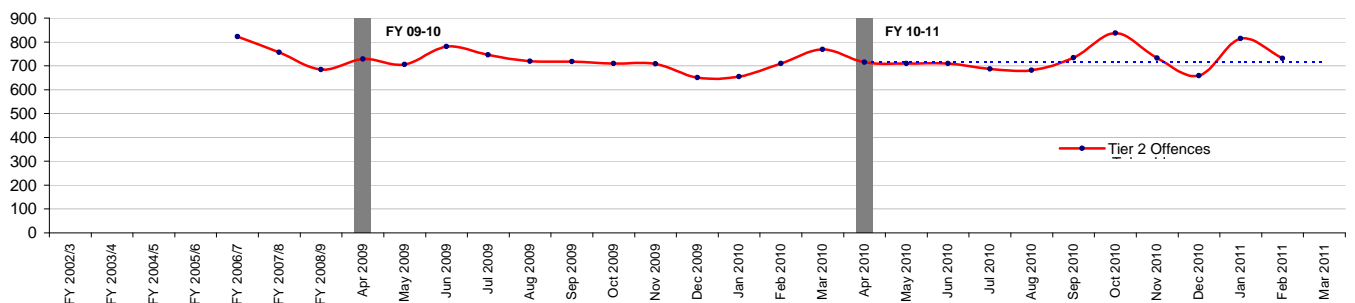
Racist Offences	
<i>Financial Year to Date Compared to Same Period in last Financial Year</i>	
Current Offences FYTD:	15% Up
Current SD Rate FYTD:	53% (Down from 54%)
Monthly Average:	28.8
Target Offences (Monthly):	25.9
SD Target	50%

TNO



TNO	
<i>Financial Year to Date Compared to Same Period in last Financial Year</i>	
Current Offences FYTD:	1% Up
Current SD Rate FYTD:	21% (Down from 23%)
Monthly Average:	2963
Target Offences (Monthly):	2956
SD Target	0%

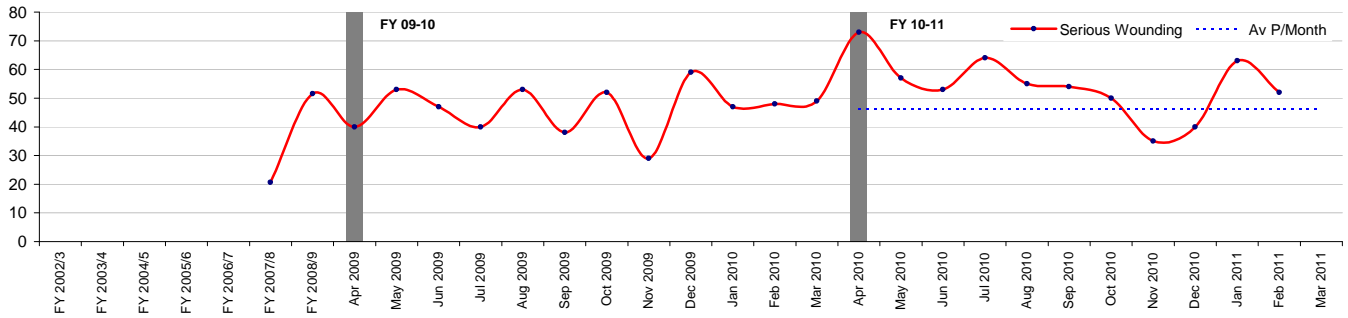
Tier 2 Offences



Tier 2 Offences	
<i>Financial Year to Date Compared to Same Period in last Financial Year</i>	
Current Offences FYTD:	2% Up
Current SD Rate FYTD:	9% (Up from 8%)
Monthly Average:	728
Target Offences (Monthly):	717
SD Target	13%

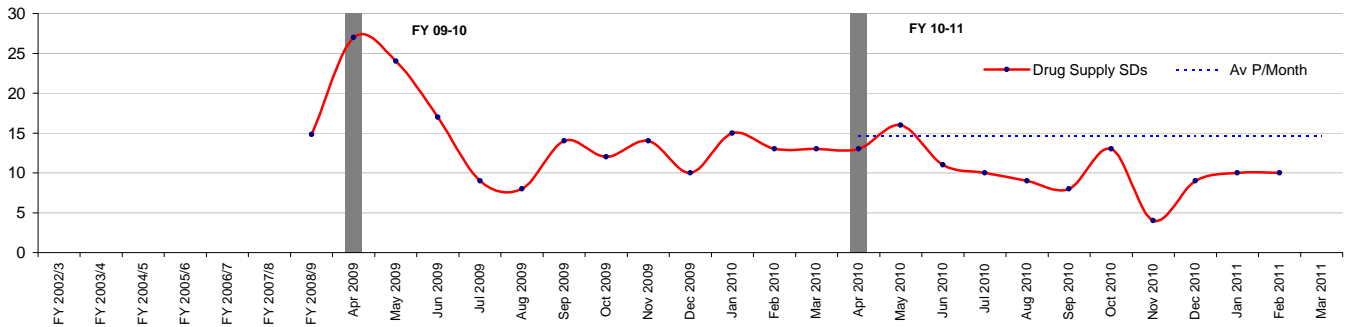
Community Police Consultative Group for Lambeth-Monthly Report

Serious Wounding



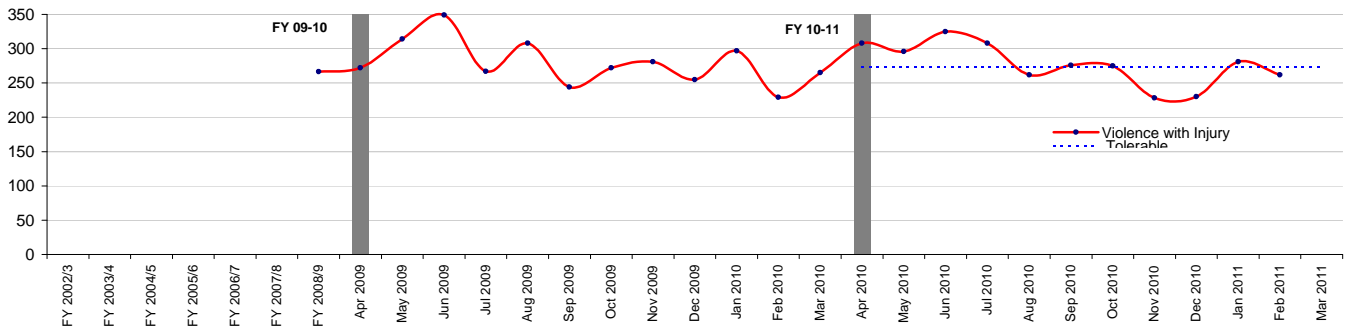
Serious Wounding	
<i>Financial Year to Date Compared to Same Period in last Financial Year</i>	
Current Offences FYTD:	18% Up
Current SD Rate FYTD:	34% (Up from 34%)
Monthly Average:	54.2
Target Offences (Monthly):	46.3
SD Target	0%

Drug Supply SDs



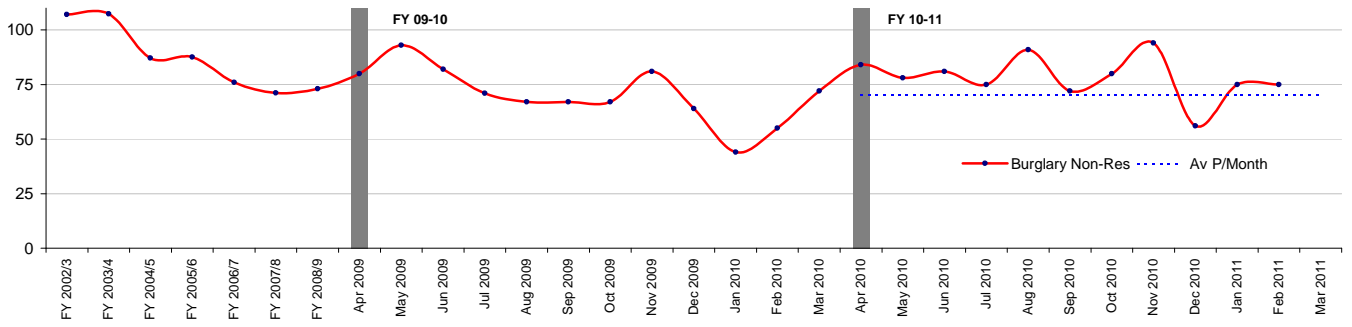
Drug Supply SDs	
<i>Financial Year to Date Compared to Same Period in last Financial Year</i>	
Current Offences FYTD:	-31% Down
Current SD Rate FYTD:	0% (from 0%)
Monthly Average:	10.3
Target Offences (Monthly):	14.7
SD Target	0%

Violence with Injury



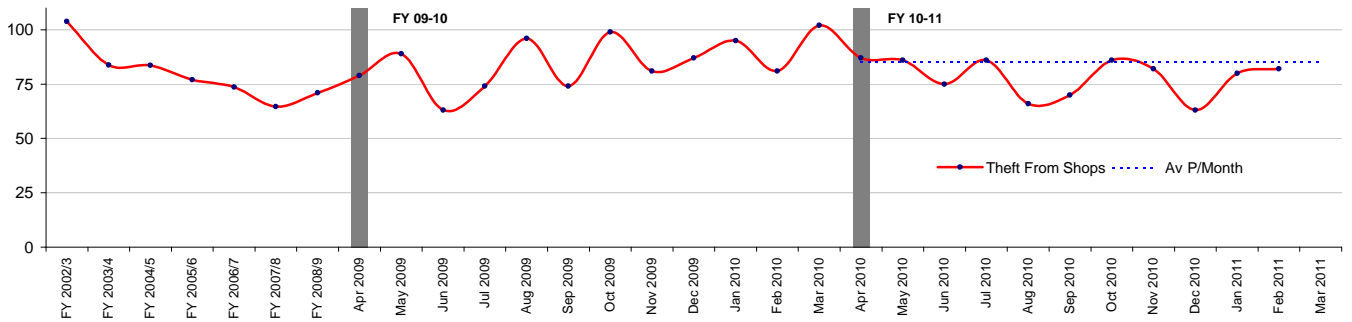
Violence with Injury	
<i>Financial Year to Date Compared to Same Period in last Financial Year</i>	
Current Offences FYTD:	-1% Down
Current SD Rate FYTD:	29% (Down from 29%)
Monthly Average:	277
Target Offences (Monthly):	273.8
SD Target	35%

Community Police Consultative Group for Lambeth-Monthly Report Burglary Non-Res



Burglary Non-Res	
<i>Financial Year to Date Compared to Same Period in last Financial Year</i>	
Current Offences FYTD:	12% Up
Current SD Rate FYTD:	8% (Down from 12%)
Monthly Average:	78.3
Target Offences (Monthly):	70.3
SD Target	0%

Theft From Shops



Theft From Shops	
<i>Financial Year to Date Compared to Same Period in last Financial Year</i>	
Current Offences FYTD:	-6% Down
Current SD Rate FYTD:	46% (Down from 49%)
Monthly Average:	78.5
Target Offences (Monthly):	85.0
SD Target	0%

Financial Year To Date Crime Performance

LINK	FY 2010 to Feb (ytd)	FY 2009 to Feb (ytd)	Difference	% Change
Total Crimes	32,597	32,339	258	0.8%
Homicide	10	6	4	66.7%
Violence Against the Person (Total)	7,090	7,131	-41	-0.6%
Rape	189	171	18	10.5%
Other Sexual	322	339	-17	-5.0%
Robbery (Total)	2505	2170	335	15.4%
Robbery (Person)	2284	1942	342	17.6%
Robbery (Business)	221	228	-7	-3.1%
Burglary (Total)	3,084	3,417	-333	-9.7%
Burglary Residential	2,223	2646	-423	-16.0%
Burglary Non- Residential	861	771	90	11.7%
Gun Enabled Crime	202	258	-56	-21.7%
Motor Vehicle Crime	3,281	3,013	268	8.9%
Domestic Crime	1659	1716	-57	-3.3%
Racist Crime	317	276	41	14.9%
Homophobic Crime	123	90	33	36.7%

Glossary

'Sanctioned' Detection Definition

A 'Sanctioned' Detection is where an allegation has resulted in either a charge, a summons, a caution, a formal warning, a youth reprimand or an offence being taken into consideration i.e. in addition to the charge for which the person is before a court, other offences can be admitted by the defendant and the court asked to take these offences into consideration in passing sentence.

Total Robbery

Combination of Robbery and Commercial Robbery

Robbery

Theft where force or threat of force is made to a person at the time or immediately before in order to steal

TNO Total Notifiable Offences

All notifiable offences which are recorded by police and a crime report is generated

I-Call

Police graded response to answer a 999 call received in the Police Control Room with 10 seconds. Response Time as per Policing Pledge for urban areas is 12 minutes (within 20 mins for rural areas). Giving an estimated time of arrival (TOA) and getting there safely and quickly as possible.

CAD

Computer aided dispatch which is the computer system used within Metropolitan Police Control rooms to record incidents