

Weighing the Balance, Bridging the Gap

Stop and Search in Lambeth
March 2004



**METROPOLITAN
POLICE**

LAMBETH
YOUTH
COUNCIL

CPCG
for
LAMBETH

Stop and Search Sub-Group

- **Set up in 2003**
 - “To address community concerns in the operation of Stop and Search in Lambeth”
- **Is it effective? Is it fair? Is it respectful?**
- **Aims to establish**
 - the correct balance between short term gain and long term cost
 - areas of agreement between community and police, and areas of contention to be resolved

History of Stop and Search

- **Vagrancy Act 1495**
- **Phillips Committee 1981**
- **Swamp 81**
- **Scarman Report 1981**
- **Police and Criminal Evidence Act (PACE) 1984**
- **Macpherson (1999)**



**METROPOLITAN
POLICE**

LAMBETH
YOUTH
COUNCIL

CPCG
for
LAMBETH

Operation of Stop and Search

- It is responsive to some form of intelligence eg officers' observations, public complaints, reported crimes.
- Location of Stop and Search generally correlates, across the Borough, with the incidence of crime.
- But, the more officers deployed to an area, the higher the rate of Stop and Search - not all will be successful.
- Stop and Search also has a deterrent value

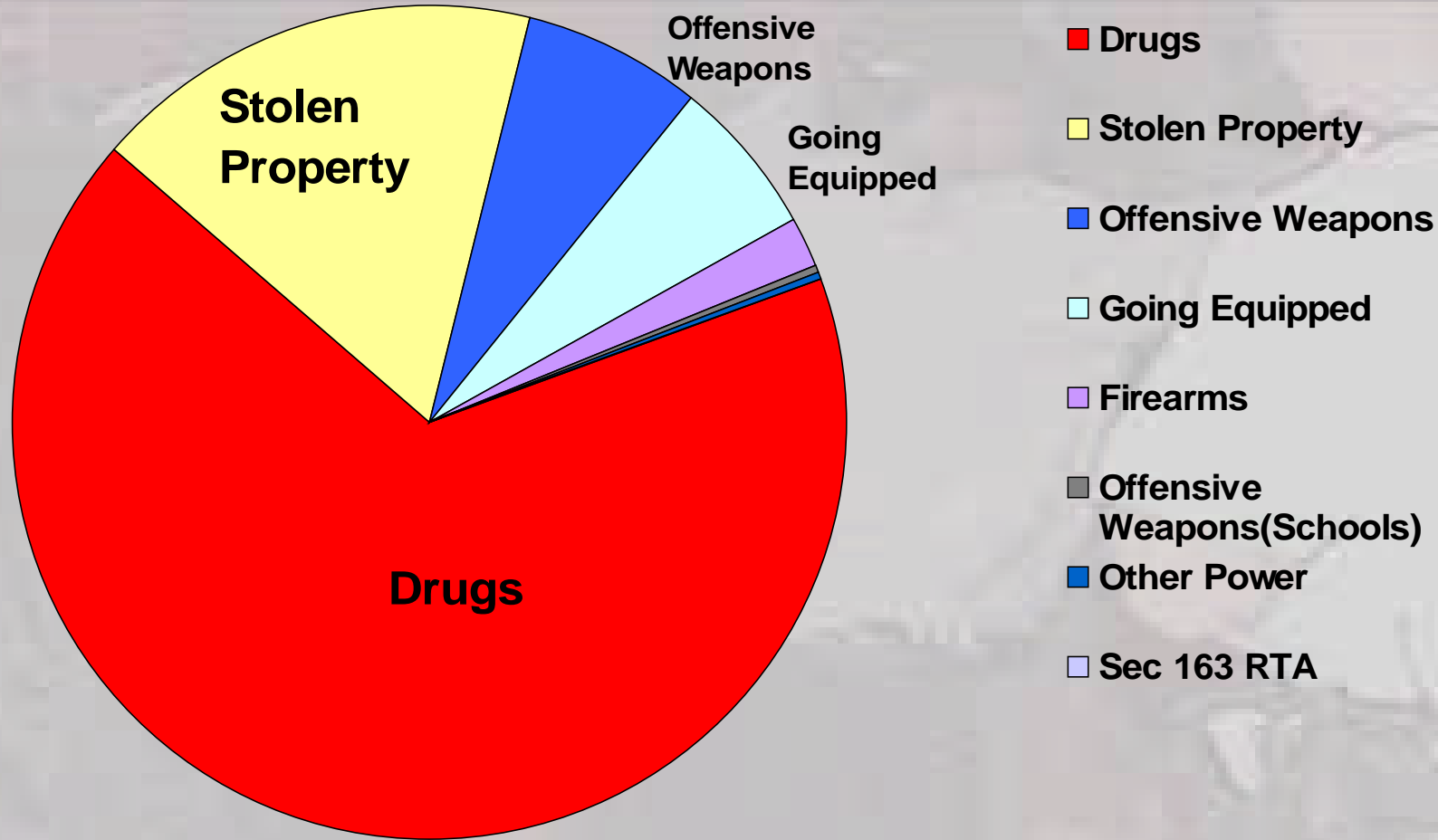


Baseline: Stop and Search in Lambeth

- Each month around 1,400 people are stopped and searched in Lambeth
- Overwhelmingly men; only 5-7% are women
- 45% are non-Lambeth residents
- Overall, 10% of those stopped are arrested and about half of those are charged or cautioned
- Over 80% of stops relate to drugs or property crime

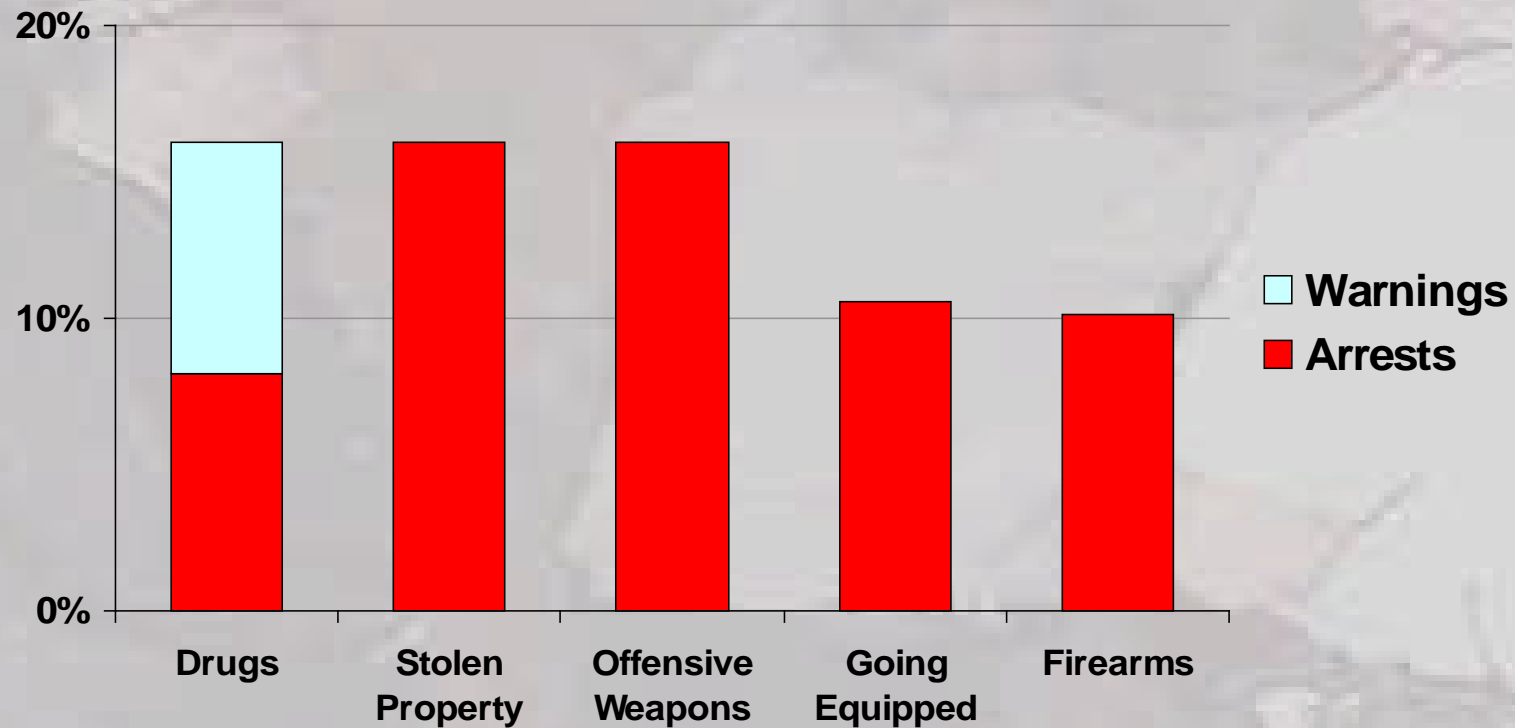


Drugs Stop and Searches Predominate



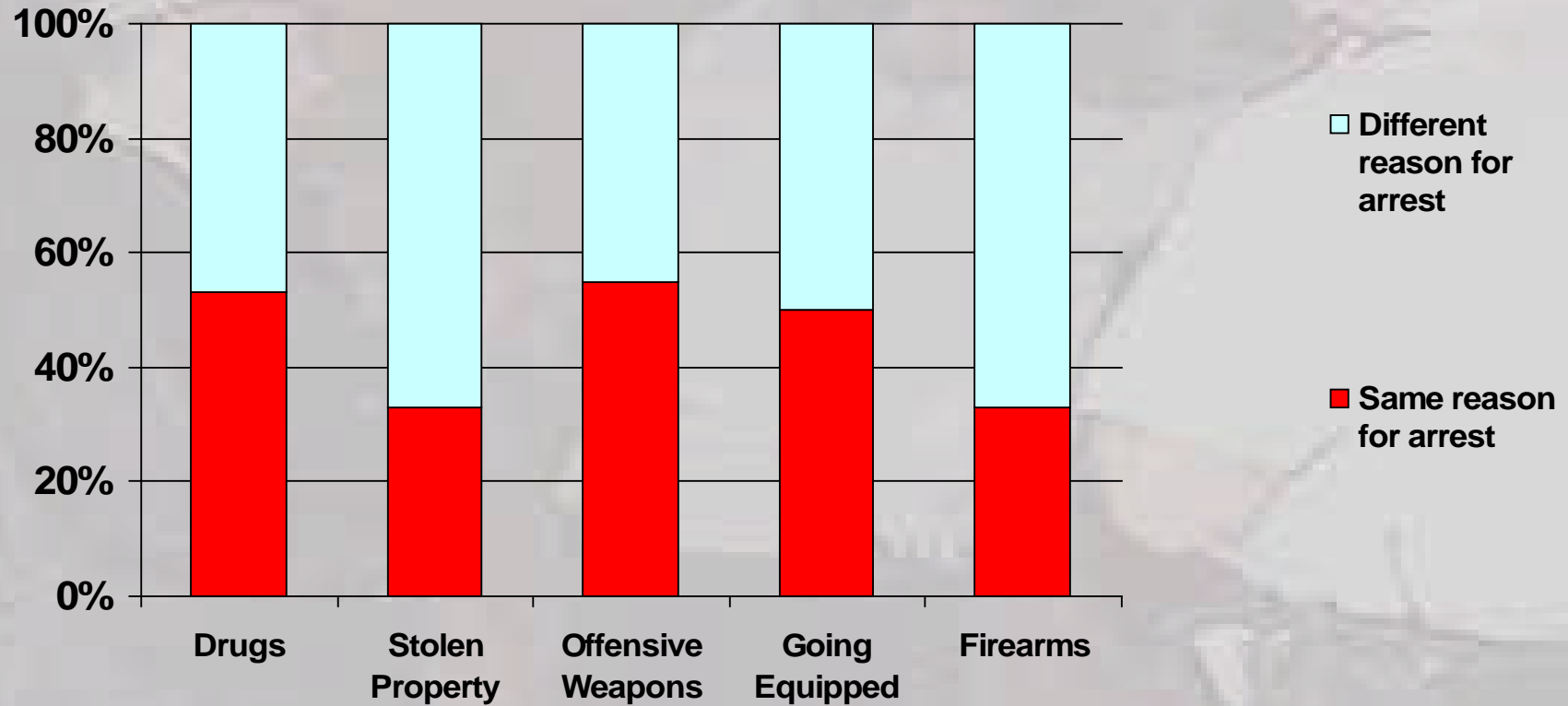
Source: Lambeth BCU Stop and Search Database, April to September 2003, 7,882 Stops

Effective?: Arrest Rate overall is 10%



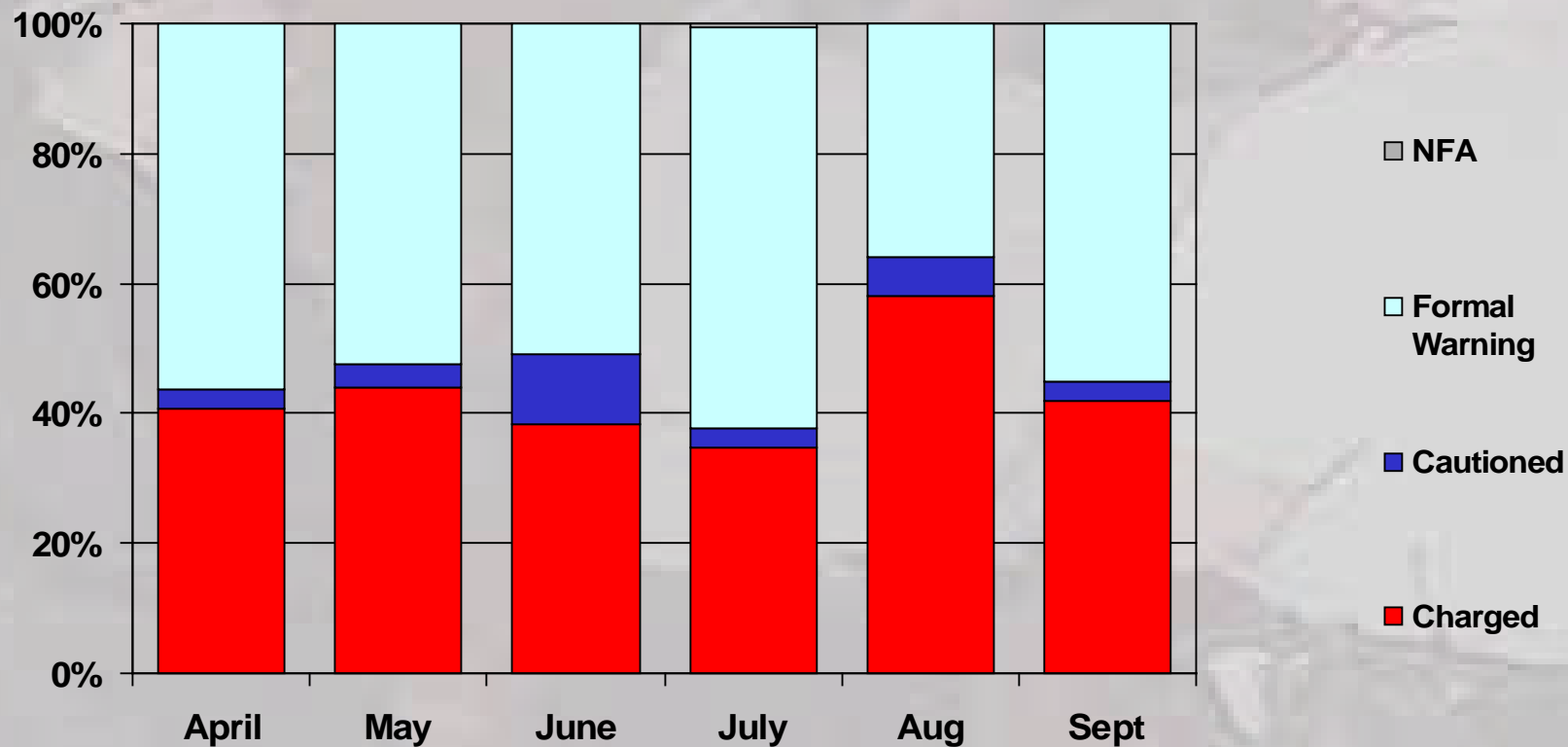
Source: Lambeth BCU Stop and Search Database, April to September 2003, 7,882 Stops

Effective? Is it accurate?



Source: Lambeth BCU Stop and Search Database, November 2002, 1,289 Stops, 128 Arrests

Effective?: Outcomes after arrest



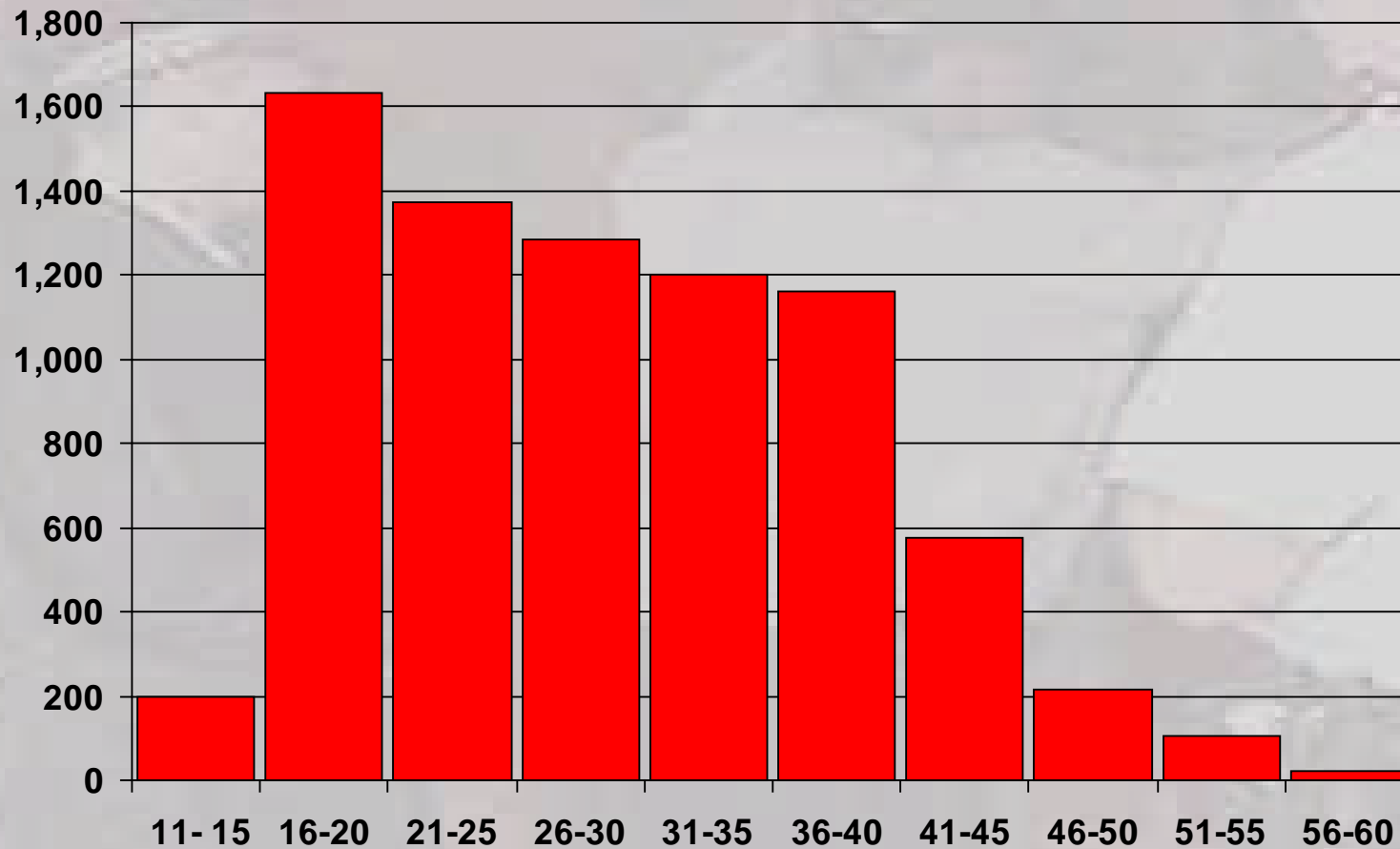
Source: Lambeth BCU Custody Database, April to September 2003, 830 arrests

Effective?

- Is 10% arrest rate 'effective'?
- Is Stop and Search 'accurate'?
- Is Stop and Search a deterrent?
- 5 in every 100 - is that a good return?
- Do the statistics chime with peoples experience on the street?
- Can Stop and Search be made more focused or are there alternatives?



Fair? :Age and Stop and Search



Source: Lambeth BCU Stop and Search Database, April to September 2003, 7,768 Stops

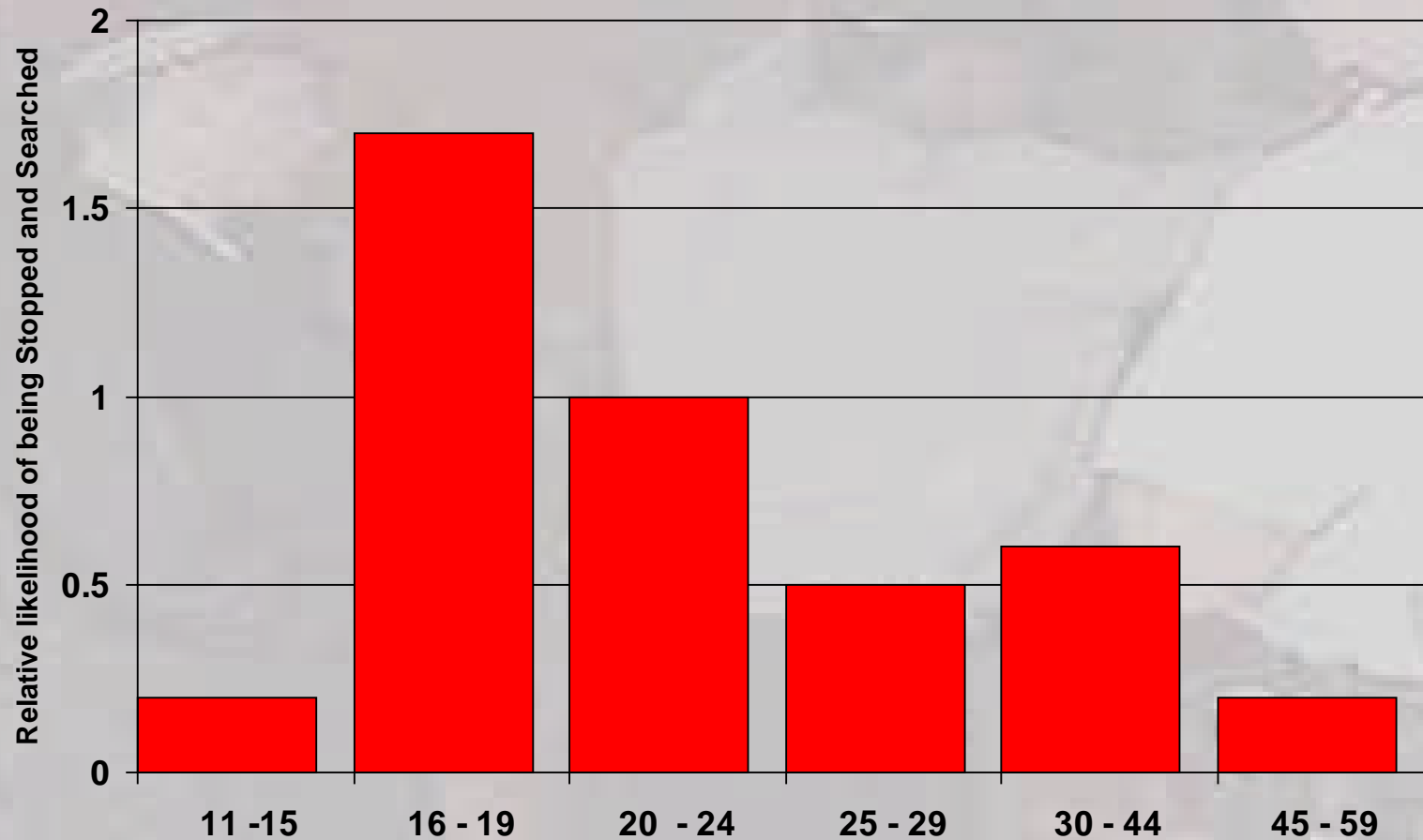


**METROPOLITAN
POLICE**

LAMBETH
YOUTH
COUNCIL

CPCG
for
LAMBETH

Fair?: Proportionality and Age



Source: Lambeth BCU Stop and Search Database, April to September 2003, 7,774 Stops

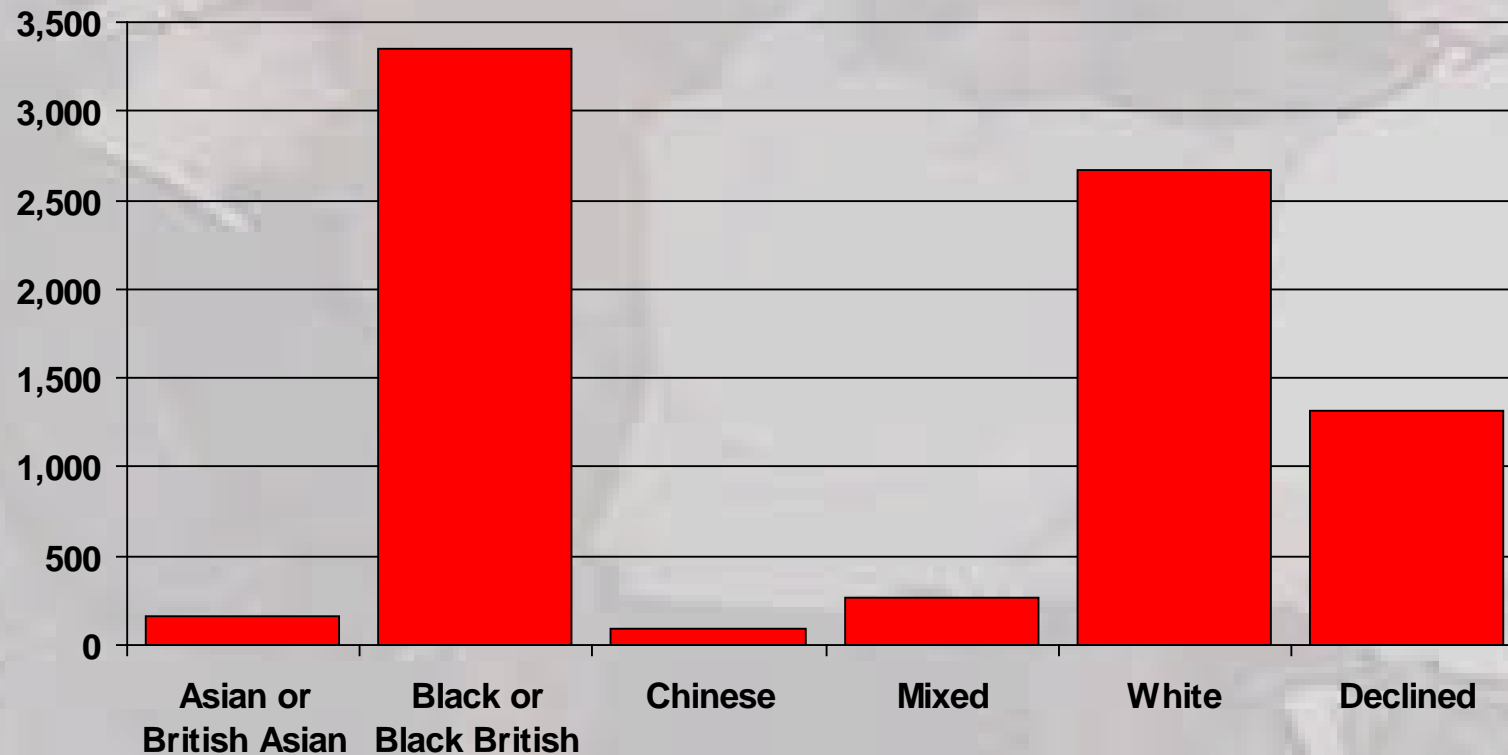


**METROPOLITAN
POLICE**

LAMBETH
YOUTH
COUNCIL

CPCG
for
LAMBETH

Fair? Ethnicity and Stop and Search



Source: Lambeth BCU Stop and Search Database, April to September 2003, 7,885 Stops

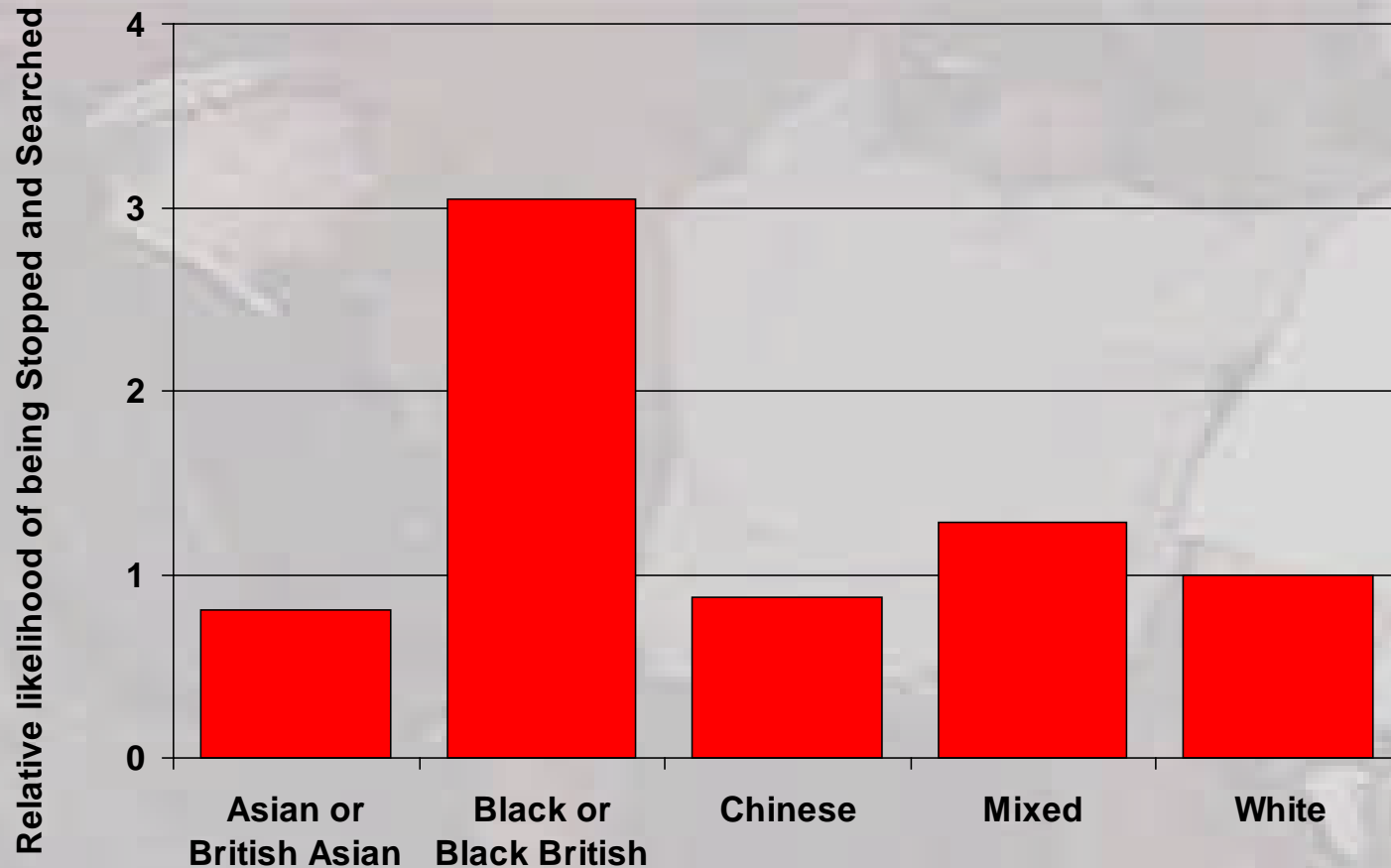


**METROPOLITAN
POLICE**

LAMBETH
YOUTH
COUNCIL

CPCG
for
LAMBETH

Fair? Proportionality and Ethnicity



Source: Lambeth BCU Stop and Search Database, April to September 2003, 7,885 Stops



METROPOLITAN
POLICE

LAMBETH
YOUTH
COUNCIL

CPCG
for
LAMBETH

Fair? Causes of Disproportionality?

- **Racism?**
- **Lack of intelligence/information?**
- **Response to intelligence/information?**
- **Quality of diversity training/training?**
- **Stereotyping?**
- **Residents v non-residents?**
- **Poor communication/consultation?**

Respectful?: Lambeth Youth Council

- **Stop and Search, Training Video**
 - young Lambeth people trained up to form the production team
 - interviews with community leaders, senior police officers, local people and police officers and young people who've been repeatedly stopped
- **Snakes and Ladders Game**



**METROPOLITAN
POLICE**

LAMBETH
YOUTH
COUNCIL

CPCG
for
LAMBETH

Proposals

- **Quarterly monitoring report to CPCG**
 - effectiveness
 - fairness
- **Third party feedback system**
- **Training input**
- **Ongoing research**
 - “Drill down” the data
 - Ad hoc studies eg survey
 - Develop the social and economic perspective



**METROPOLITAN
POLICE**

LAMBETH
YOUTH
COUNCIL

CPCG
for
LAMBETH